
INFECTIOUS DISEASES WEEKLY REPORT

TOKYO IDWR

Tokyo Metropolitan Infectious Disease Surveillance Center

8 November 2012 / Number 44

Surveillance System in Tokyo, Japan

The infectious diseases which all physicians must report

All physicians must report to health centers the incidence of the diseases which are shown at page one. Health centers electronically report the individual cases to Tokyo Metropolitan Infectious Disease Surveillance Center.

The infectious diseases required to be reported by the sentinels

The numbers of patients who visit the sentinel clinics or hospitals during a week are reported to health centers in Tokyo. And they electronically report the numbers to Tokyo Metropolitan Infectious Disease Surveillance Center. We have about 500 sentinel clinics and hospitals in Tokyo.

1st Week is early January and 52nd Week is end of December.

Tokyo Metropolitan Institute of Public Health

TEL:81-3-3363-3213 FAX:81-3-5332-7365

e-mail:idsc@tokyo-eiken.go.jp

URL:idsc.tokyo-eiken.go.jp/

Number of patients with the diseases which all physicians must report

Category	Diseases	Tokyo				Japan		
		41st	42nd	43rd	44th	Cum 2012	44th	Cum 2012
I	Ebola hemorrhagic fever							
	Crimean-Congo hemorrhagic fever							
	Smallpox							
	South American hemorrhagic fever							
	Plague							
	Marburg disease							
	Lassa fever							
II	Acute poliomyelitis							
	Tuberculosis	65	80	87	80	3,842	366	24,448
	Diphtheria							
	Severe Acute Respiratory Syndrome(SARS)							
	Avian influenza H5N1							
III	Cholera							3
	Shigellosis	1	3	1	1	60	3	187
	Enterohemorrhagic Escherichia coli infection	6	27	6	3	238	33	3,456
	Typhoid fever			1		10		28
	Paratyphoid fever			1		9		19
IV	Hepatitis E	2		1		15		98
	West Nile fever							
	Hepatitis A		1			29	3	142
	Echinococcosis						1	12
	Yellow fever							
	Psittacosis							6
	Omsk hemorrhagic fever							
	Relapsing fever							
	Kyasanur forest disease							
	Q fever							
	Rabies							
	Coccidioidomycosis					1		2
	Monkeypox							
	Hemorrhagic fever with renal syndrome							
	Western equine encephalitis							
	Tick-borne encephalitis							
	Anthrax							
	Chikungunya fever	1	1			3		7
	Scrub typhus(Tsutsugamushi disease)				1	4	4	211
	Dengue fever	4	1	2	3	50	4	192
	Eastern equine encephalitis							
	Avian influenza (excluding H5N1)							
	Nipah virus infection							
	Japanese spotted fever						5	150
	Japanese encephalitis							2
	Hantavirus pulmonary syndrome							
	Herpes B virus infection							
	Glanders							
	Brucellosis							
	Venezuelan equine encephalitis							
	Hendra virus infection							
	Epidemic typhus							
Botulism							3	
Malaria		1			20	1	67	
Tularemia								
Lyme disease							9	
Lyssavirus infection(excluding rabies)								
Rift valley fever								
Melioidosis								
Legionellosis		2			47	13	720	
Leptospirosis				1	5	2	27	
Rocky mountain spotted fever								

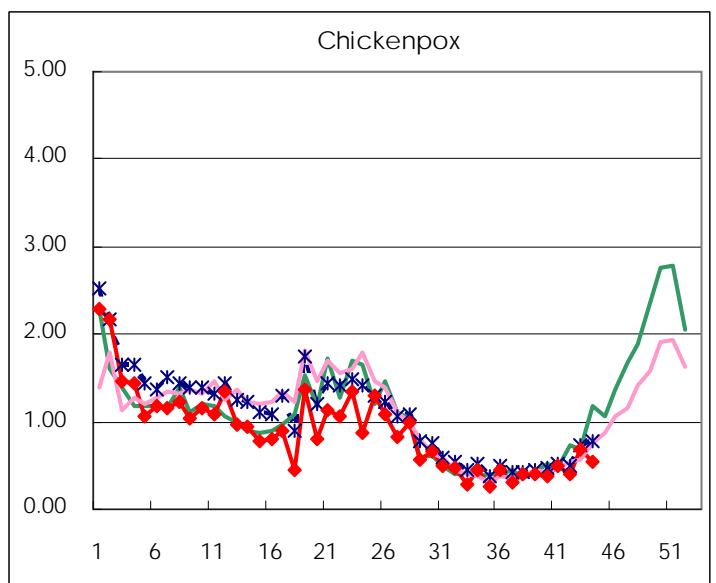
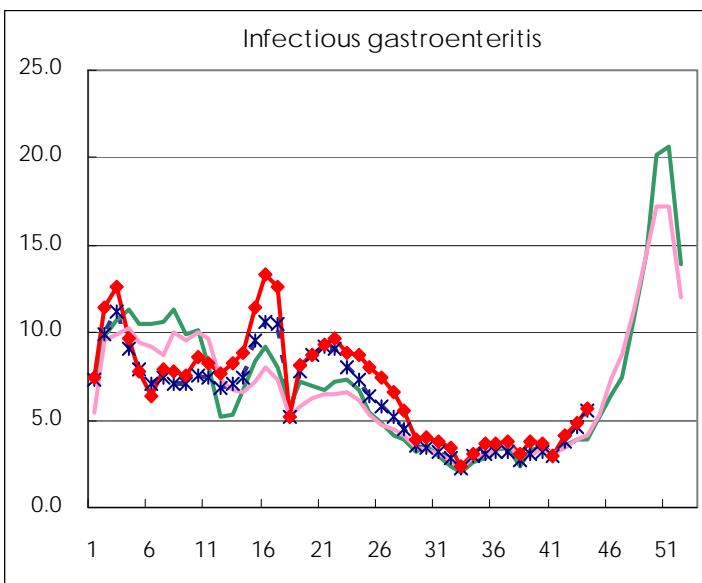
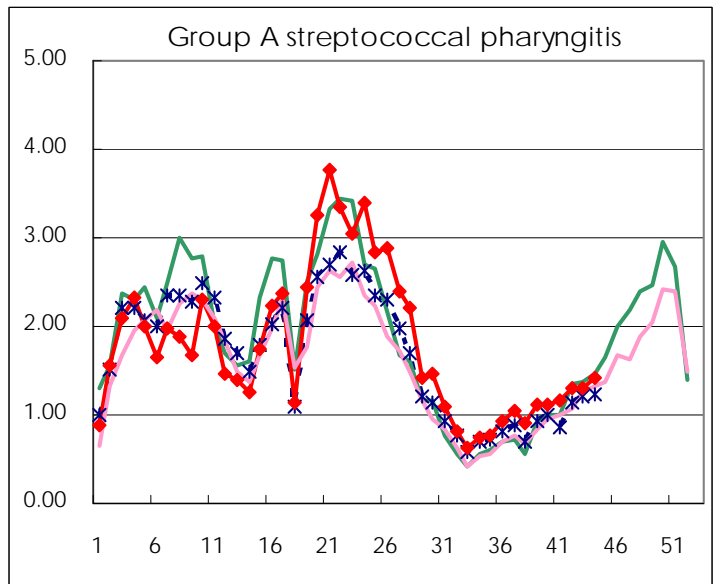
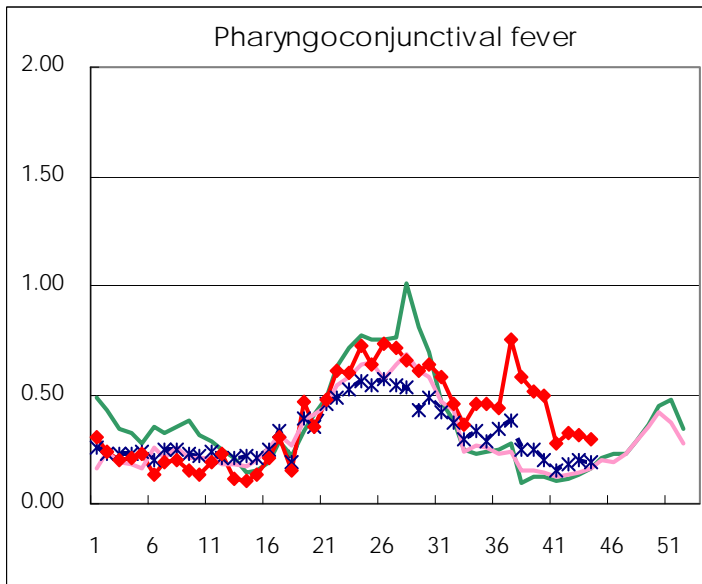
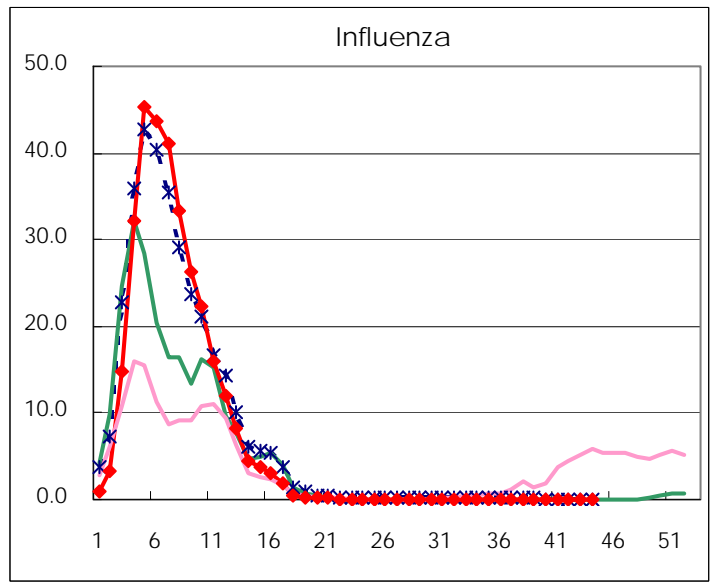
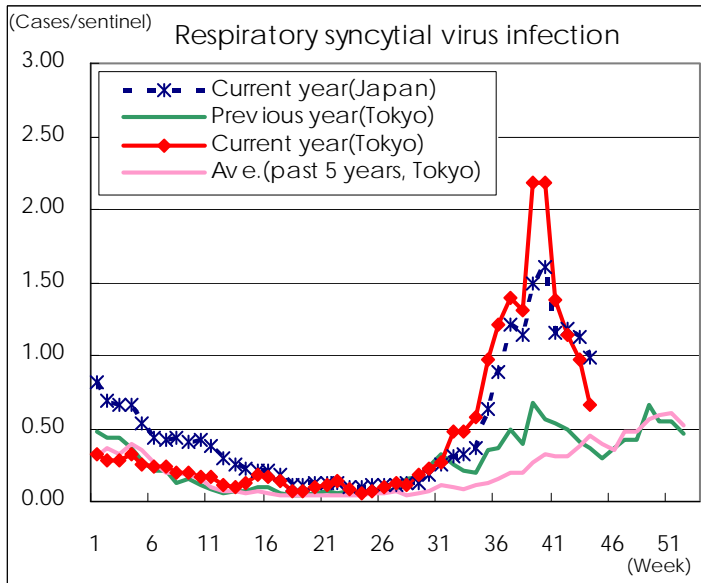
Category	Diseases	Tokyo				Japan		
		41st	42nd	43rd	44th	Cum 2012	44th	Cum 2012
V	Amebiasis	5	2	3	3	161	13	748
	Viral hepatitis(excluding hepatitis A and E)		1	1	3	46	1	187
	Acute encephalitis(excluding JE and WNE)			1		28		310
	Cryptosporidiosis					2		6
	Creutzfeldt-Jakob disease		1			13	2	153
	Severe invasive streptococcal infections(TSLS)	1		1		20	2	211
	Acquired immunodeficiency syndrome (AIDS)	13	15	8	9	393	17	1,189
	Giardiasis	1			1	12	1	61
	Meningococcal meningitis						1	11
	Congenital rubella syndrome							1
	Syphilis	9	2	3	4	240	10	731
	Tetanus					4	3	95
	Vancomycin-resistant S. aureus infection							
	Vancomycin-resistant Enterococcus infection				1	10	2	79
	Rubella	18	24	16	11	508	17	1,960
	Measles	2	1			73	3	277

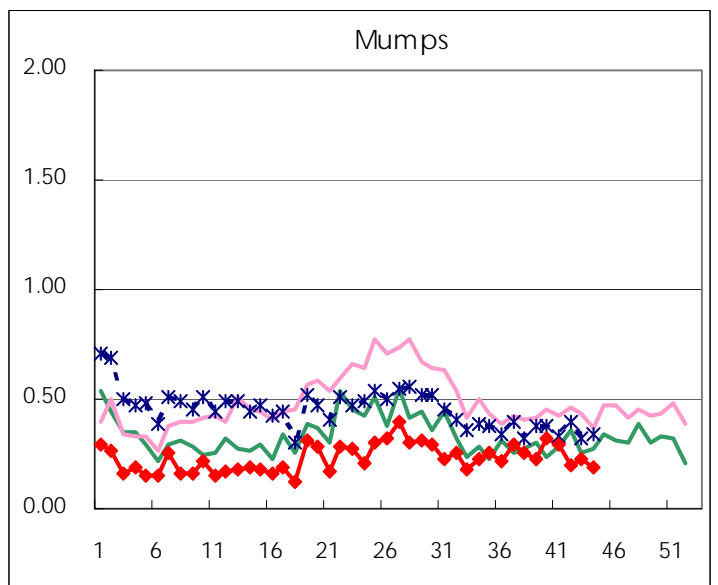
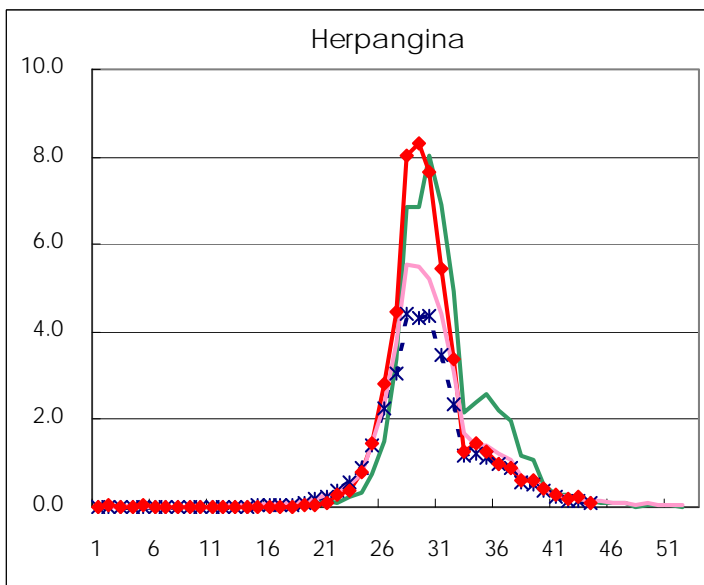
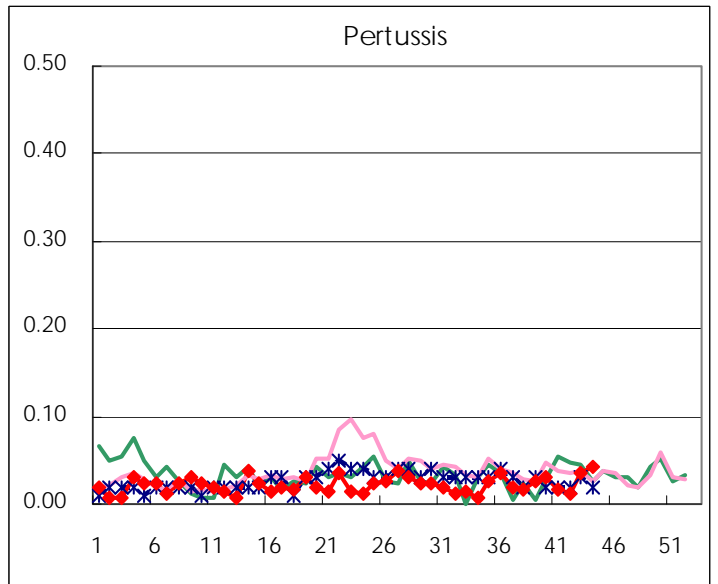
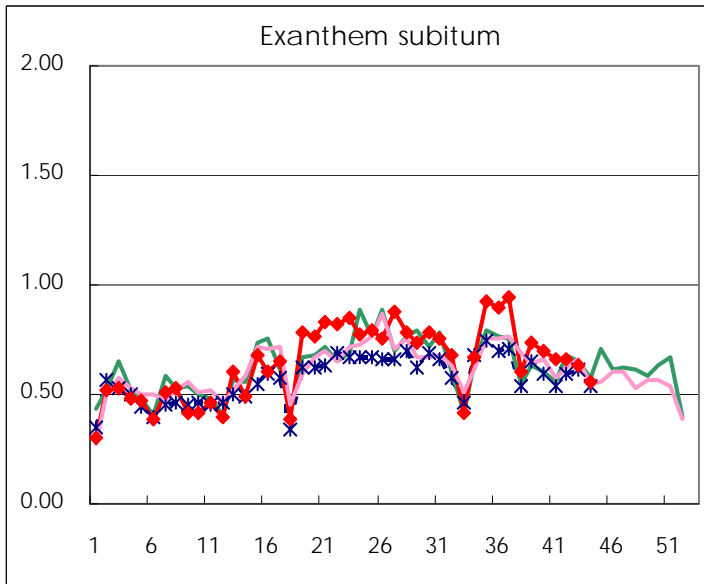
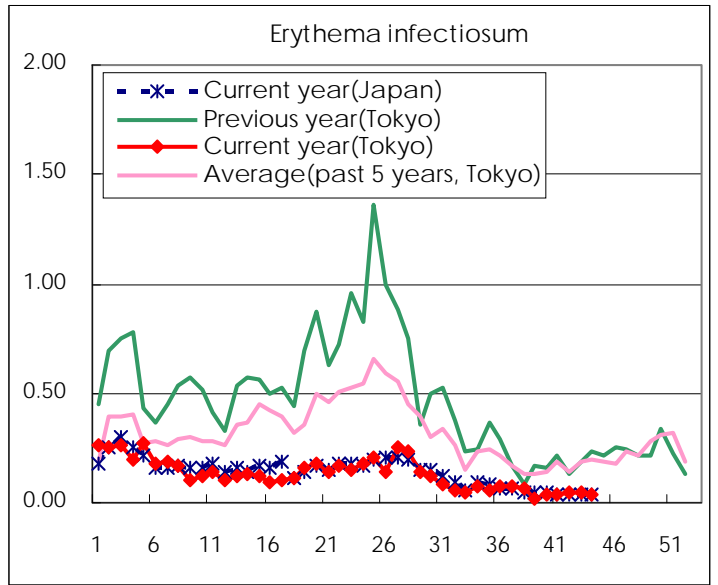
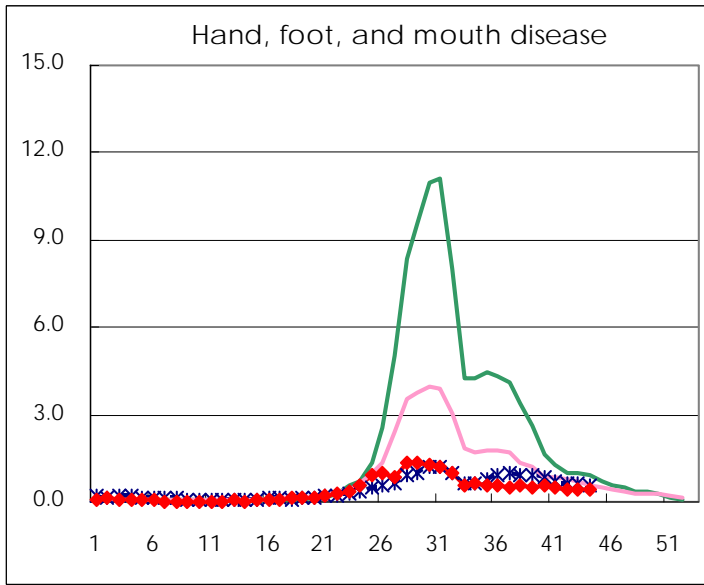
Number of patients with the diseases to be reported
by the designated clinics and hospitals

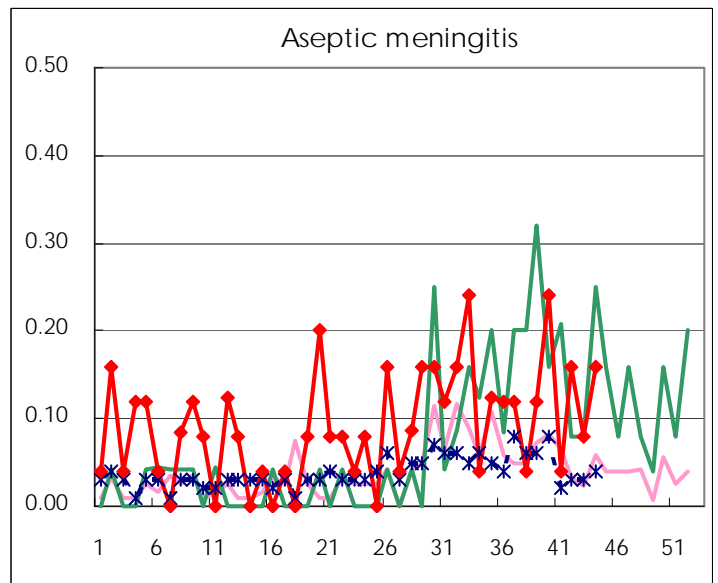
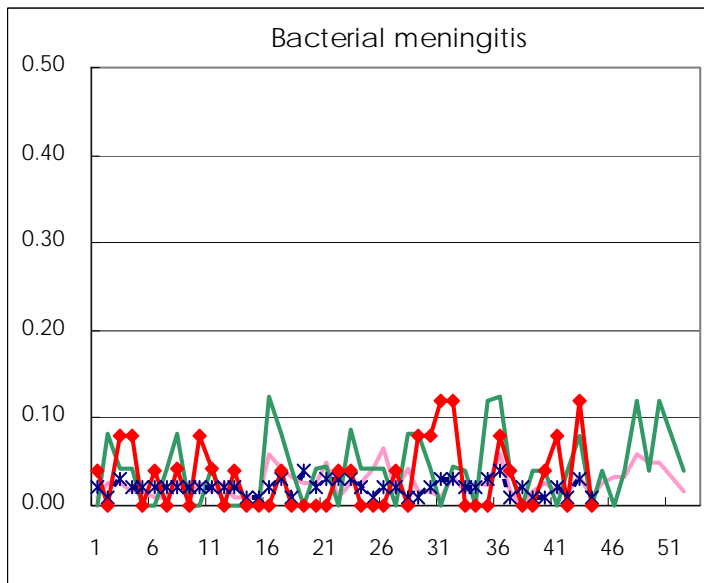
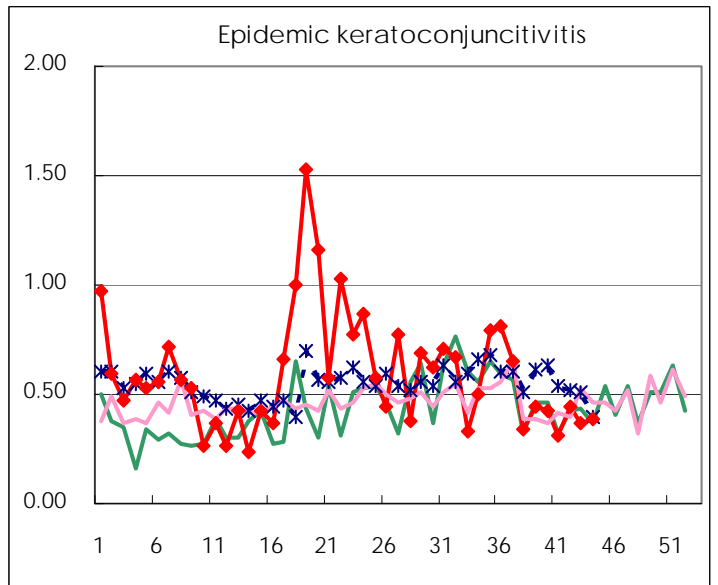
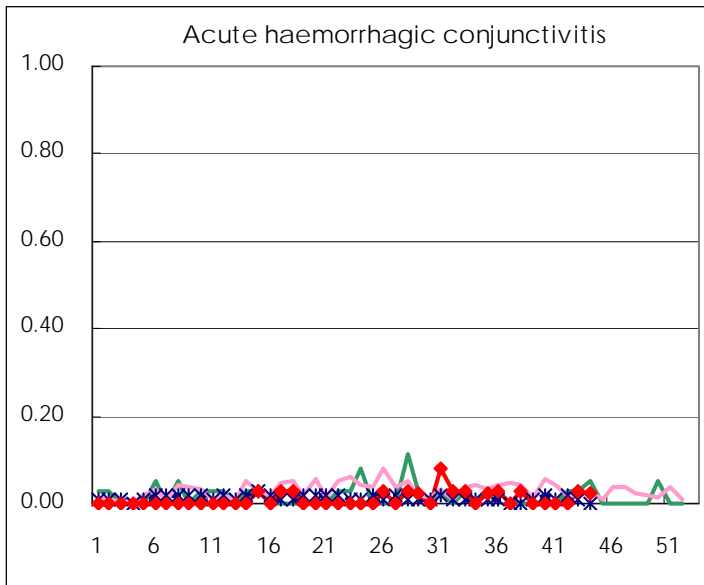
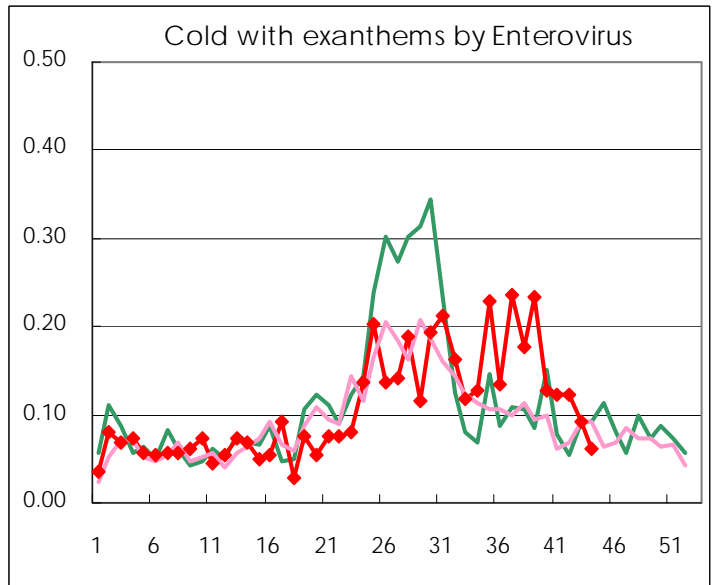
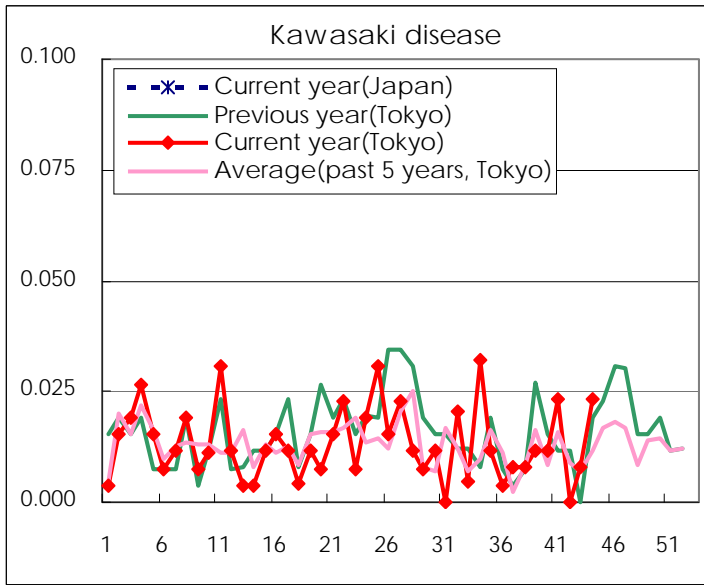
Diseases	Tokyo				
	41st	42nd	43rd	44th	/sentinel
Respiratory syncytial virus infection	359	297	254	171	0.66
Pharyngoconjunctival fever	72	84	82	77	0.30
Group A streptococcal pharyngitis	300	339	341	369	1.42
Infectious gastroenteritis	770	1,073	1,244	1,461	5.62
Chickenpox	128	103	178	141	0.54
Hand, foot, and mouth disease	128	103	103	103	0.40
Erythema infectiosum	9	13	12	10	0.04
Exanthem subitum	172	172	164	145	0.56
Pertussis	4	3	9	11	0.04
Herpangina	79	46	58	25	0.10
Mumps	76	51	59	48	0.18
Kawasaki disease	6		2	6	0.02
Cold with exanths by Enterovirus	32	32	24	16	0.06
Influenza	17	19	16	20	0.05
Acute hemorrhagic conjunctivitis			1	1	0.03
Epidemic keratoconjunctivitis	12	17	14	15	0.38
Bacterial meningitis	2		3		
Aseptic meningitis	1	4	2	4	0.16
Mycoplasma pneumonia	30	33	36	29	1.16
Chlamydial pneumonia (excluding psittacosis)		1	1	1	0.04
Influenza-Associated Hospitalizations	1	1		1	0.04

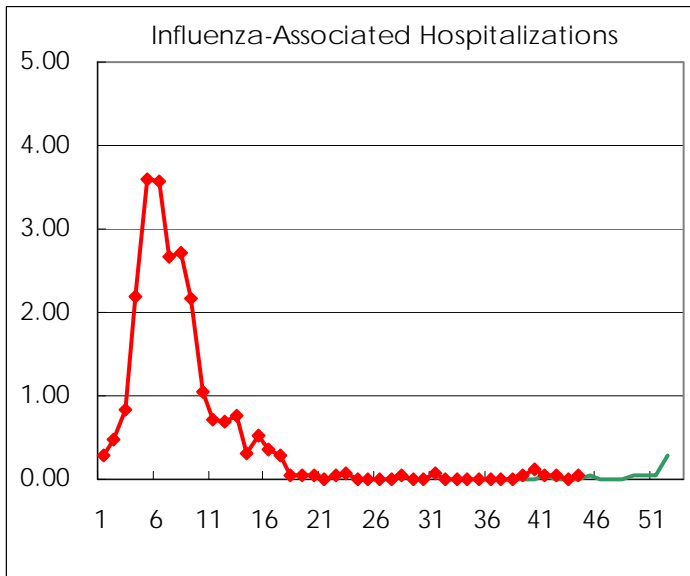
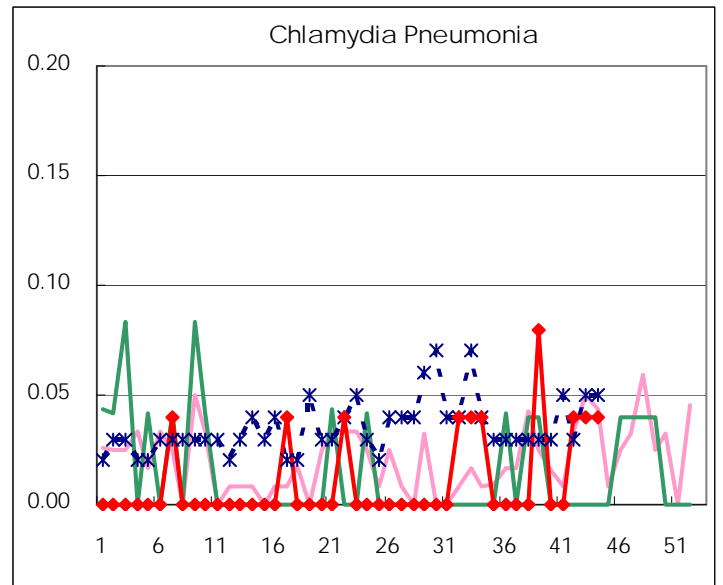
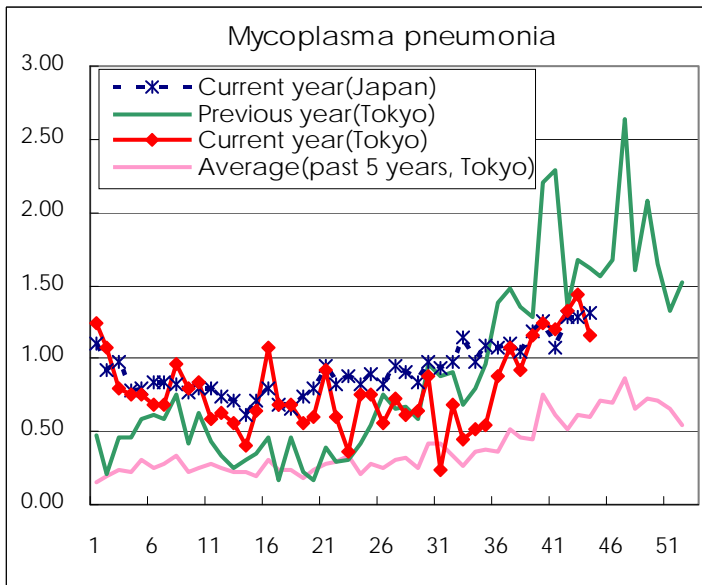
(Blank means 0.)

Disease Trend Graph (weekly reported cases per sentinel in comparison)









Number of sentinel facilities for weekly reporting		
Types of sentinels	Number of sentinels	Sentinels having reported
Pediatric	264	260
Influenza	419	415
Ophthalmic	39	39
Specially-designated	25	25

Tokyo Metropolitan Government
Infectious Disease Surveillance Center