

---

INFECTIOUS DISEASES WEEKLY REPORT

# TOKYO IDWR

Tokyo Metropolitan Infectious Disease Surveillance Center

## 15 November 2012 / Number 45

### Surveillance System in Tokyo, Japan

The infectious diseases which all physicians must report

All physicians must report to health centers the incidence of the diseases which are shown at page one. Health centers electronically report the individual cases to Tokyo Metropolitan Infectious Disease Surveillance Center.

The infectious diseases required to be reported by the sentinels

The numbers of patients who visit the sentinel clinics or hospitals during a week are reported to health centers in Tokyo. And they electronically report the numbers to Tokyo Metropolitan Infectious Disease Surveillance Center. We have about 500 sentinel clinics and hospitals in Tokyo.

1st Week is early January and 52nd Week is end of December.

Tokyo Metropolitan Institute of Public Health

TEL:81-3-3363-3213 FAX:81-3-5332-7365

e-mail:[idsc@tokyo-eiken.go.jp](mailto:idsc@tokyo-eiken.go.jp)

URL:[idsc.tokyo-eiken.go.jp/](http://idsc.tokyo-eiken.go.jp/)

---

## Number of patients with the diseases which all physicians must report

Category	Diseases	Tokyo				Japan		
		42nd	43rd	44th	45th	Cum 2012	45th	Cum 2012
I	Ebola hemorrhagic fever							
	Crimean-Congo hemorrhagic fever							
	Smallpox							
	South American hemorrhagic fever							
	Plague							
	Marburg disease							
	Lassa fever							
II	Acute poliomyelitis							
	Tuberculosis	81	88	98	68	3,933	349	24,980
	Diphtheria							
	Severe Acute Respiratory Syndrome(SARS)							
	Avian influenza H5N1							
III	Cholera							3
	Shigellosis	3	1	1	1	61	2	192
	Enterohemorrhagic Escherichia coli infection	27	7	4	4	244	41	3,514
	Typhoid fever		1			10		30
	Paratyphoid fever		1	1		10		20
IV	Hepatitis E		1		1	16	2	100
	West Nile fever							
	Hepatitis A	1			1	30	3	145
	Echinococcosis							12
	Yellow fever							
	Psittacosis							6
	Omsk hemorrhagic fever							
	Relapsing fever							
	Kyasanur forest disease							
	Q fever							
	Rabies							
	Coccidioidomycosis					1		2
	Monkeypox							
	Hemorrhagic fever with renal syndrome							
	Western equine encephalitis							
	Tick-borne encephalitis							
	Anthrax							
	Chikungunya fever	1				3	1	8
	Scrub typhus(Tsutsugamushi disease)			1		4	21	234
	Dengue fever	1	2	3	1	51	3	195
	Eastern equine encephalitis							
	Avian influenza (excluding H5N1)							
	Nipah virus infection							
	Japanese spotted fever						3	153
	Japanese encephalitis							2
	Hantavirus pulmonary syndrome							
	Herpes B virus infection							
	Glanders							
	Brucellosis							
	Venezuelan equine encephalitis							
	Hendra virus infection							
	Epidemic typhus							
Botulism							3	
Malaria	1				20		68	
Tularemia								
Lyme disease						1	10	
Lyssavirus infection(excluding rabies)								
Rift valley fever								
Melioidosis								
Legionellosis	2			2	49	13	740	
Leptospirosis			1		5		28	
Rocky mountain spotted fever								

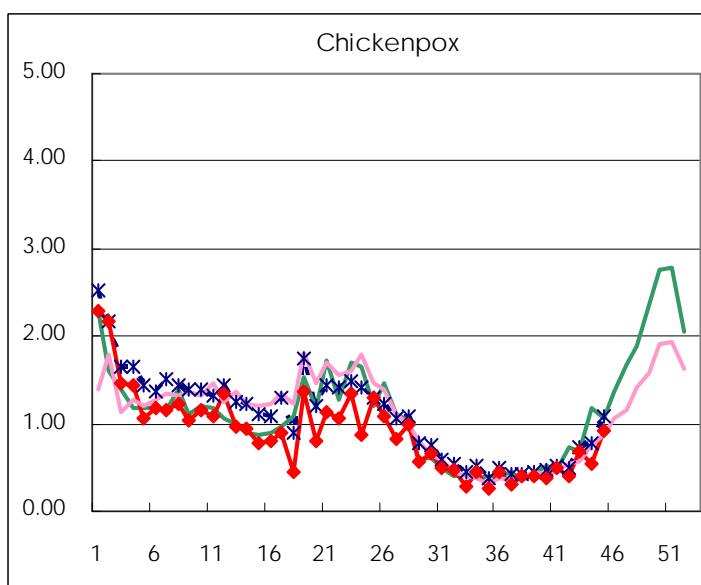
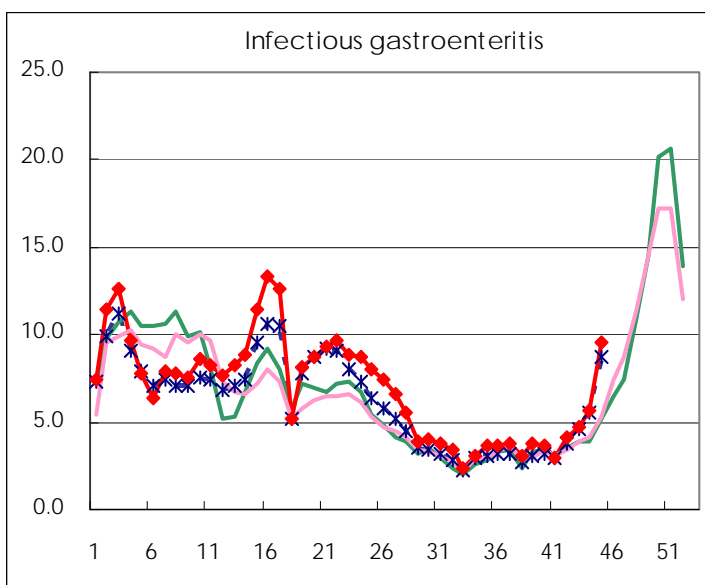
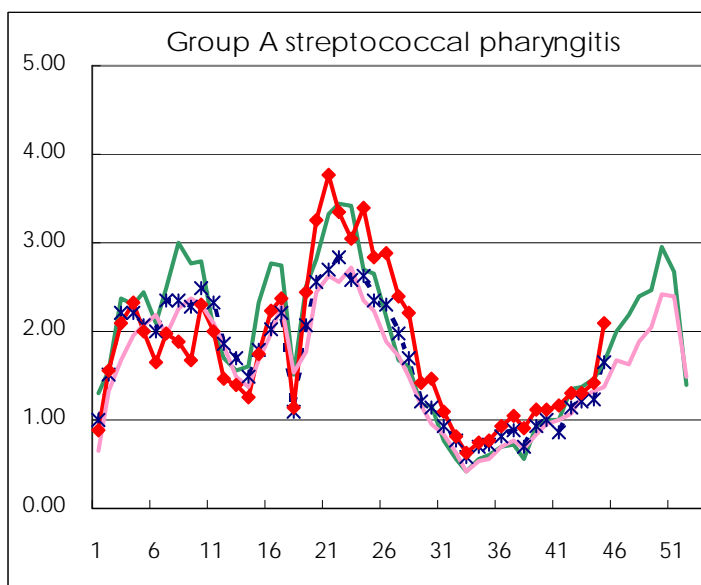
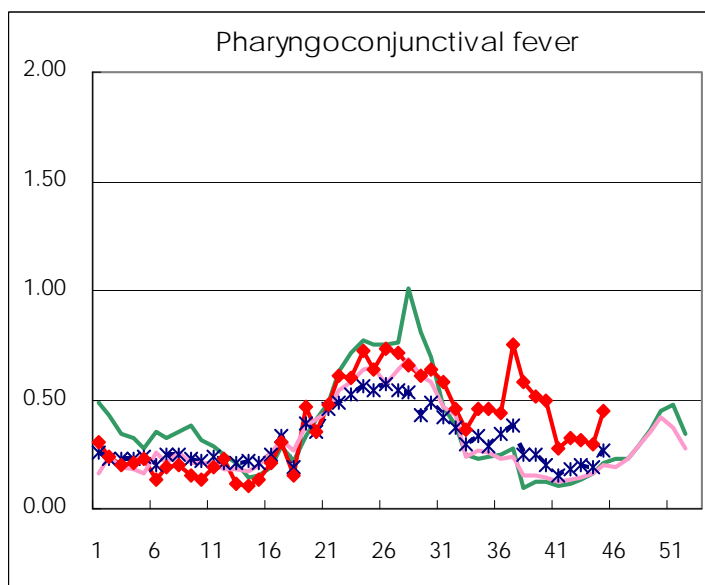
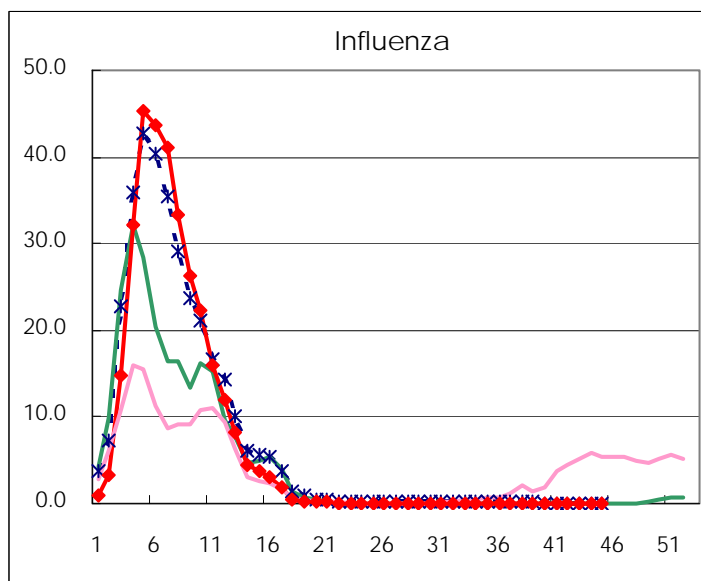
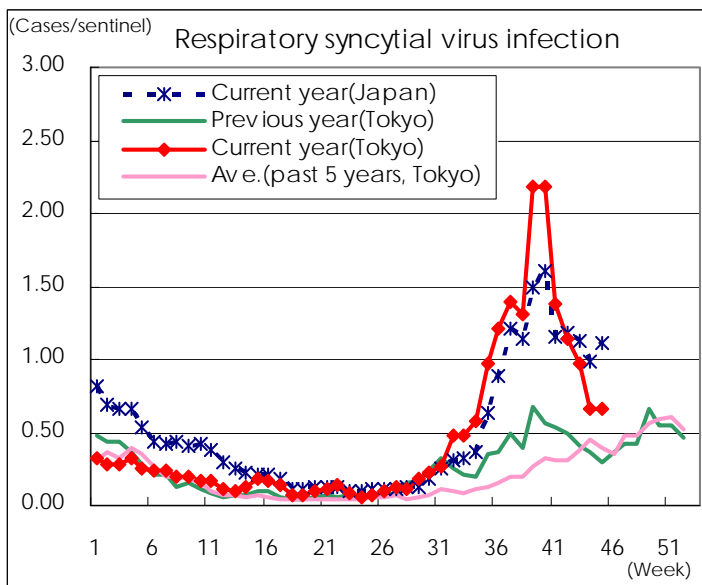
Category	Diseases	Tokyo				Japan		
		42nd	43rd	44th	45th	Cum 2012	45th	Cum 2012
V	Amebiasis	2	3	3	3	164	8	766
	Viral hepatitis(excluding hepatitis A and E)	1	1	4	1	48	2	192
	Acute encephalitis(excluding JE and WNE)		1		1	29	2	317
	Cryptosporidiosis					2		6
	Creutzfeldt-Jakob disease	1				13	3	157
	Severe invasive streptococcal infections(TSLS)		1		1	21	1	218
	Acquired immunodeficiency syndrome (AIDS)	15	8	9	6	399	12	1,205
	Giardiasis			1	1	13	1	62
	Meningococcal meningitis						1	12
	Congenital rubella syndrome							1
	Syphilis	2	3	4	6	246	13	750
	Tetanus					4		97
	Vancomycin-resistant S. aureus infection							
	Vancomycin-resistant Enterococcus infection			1		10	3	83
	Rubella	24	16	12	8	517	33	1,999
	Measles	1				73	2	277

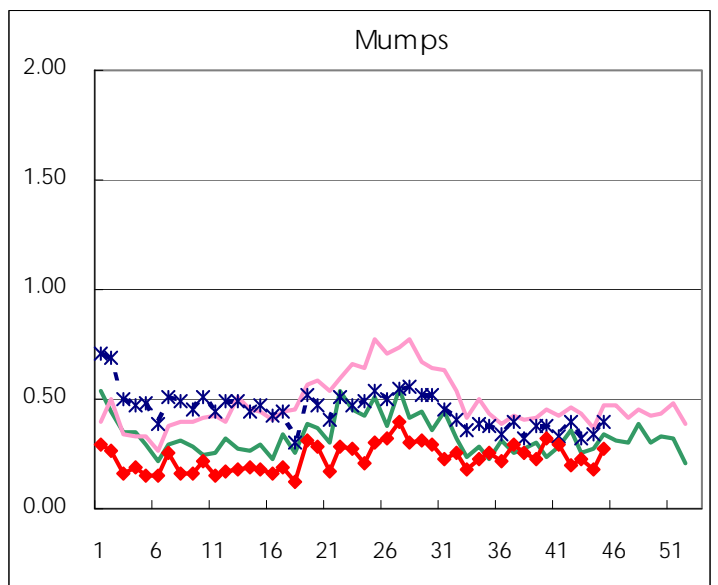
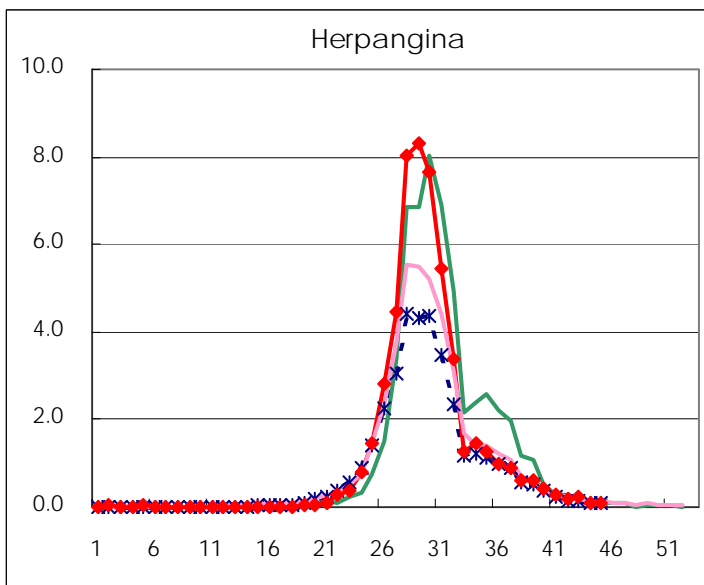
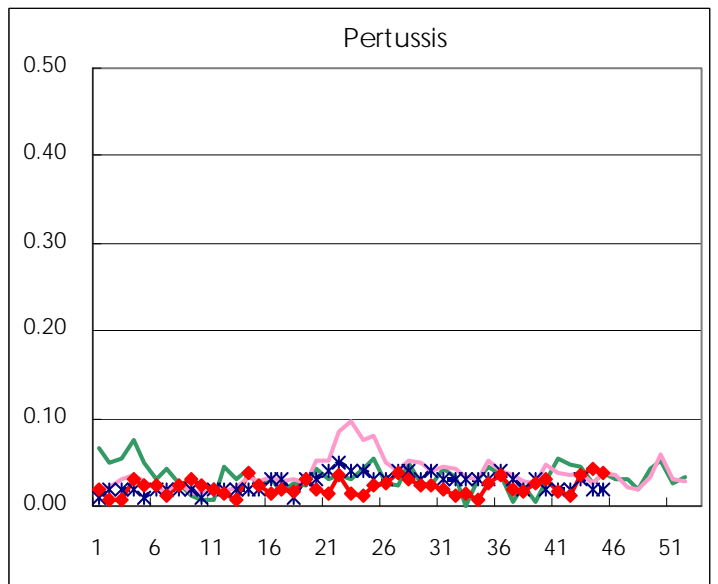
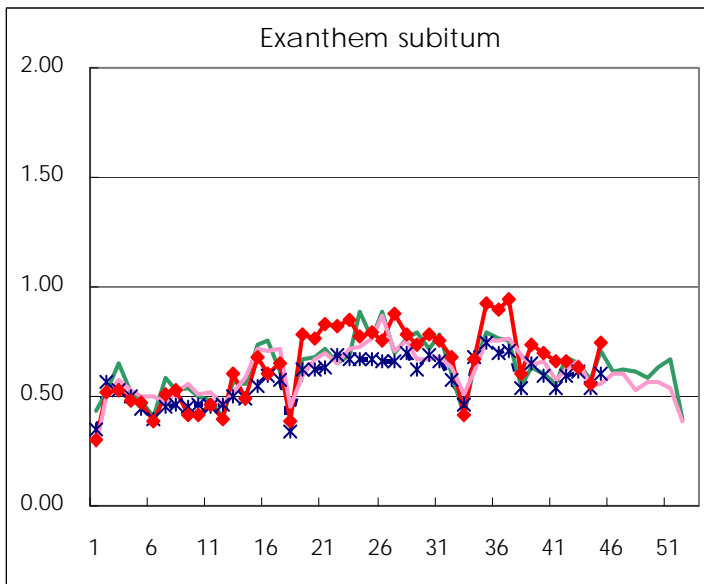
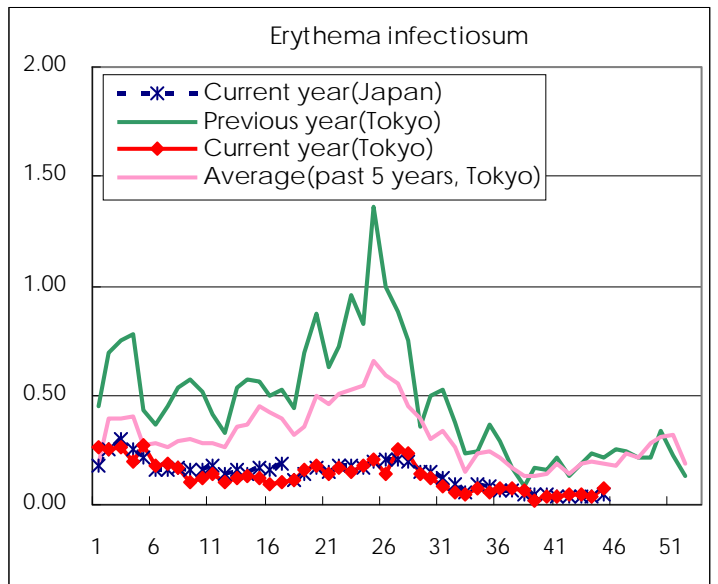
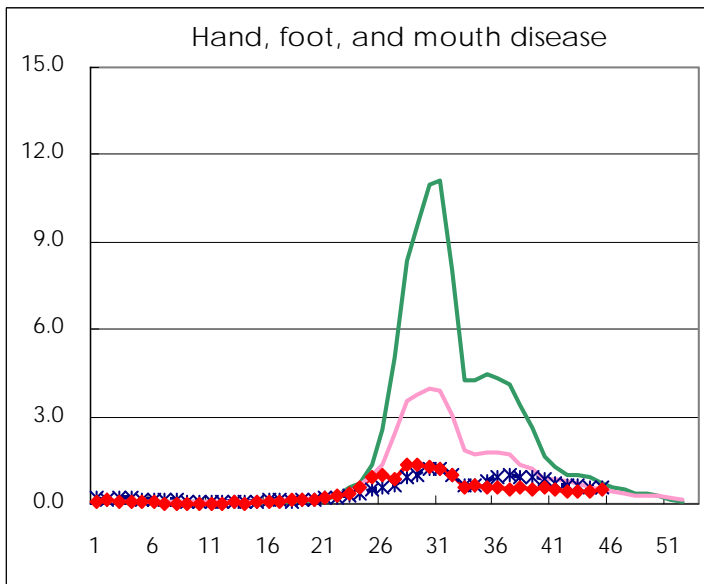
Number of patients with the diseases to be reported  
by the designated clinics and hospitals

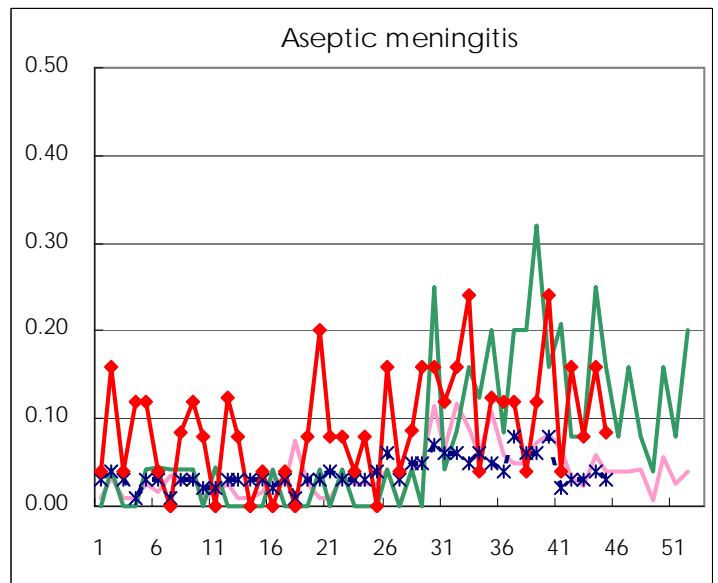
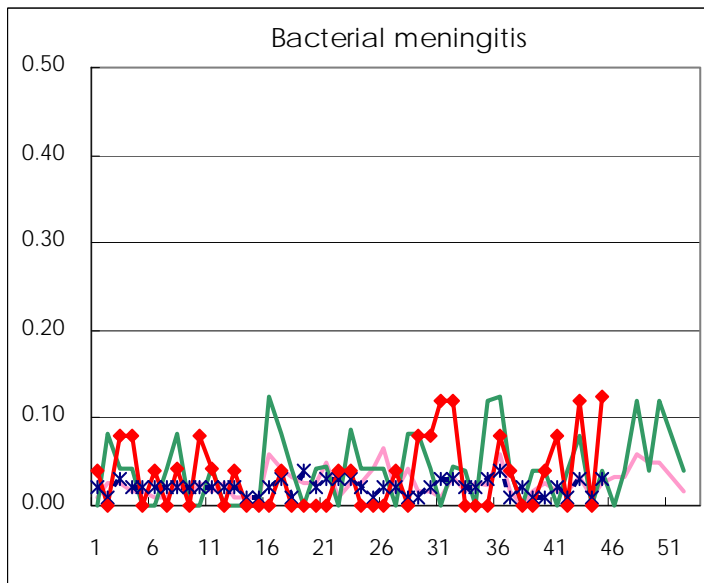
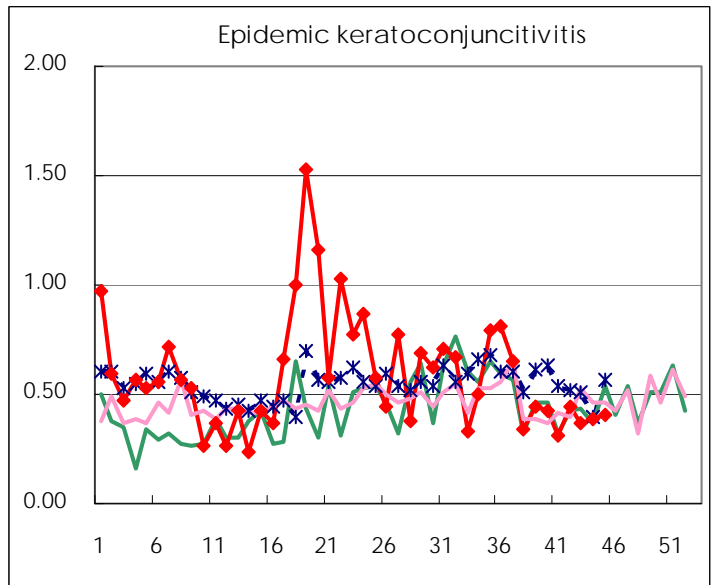
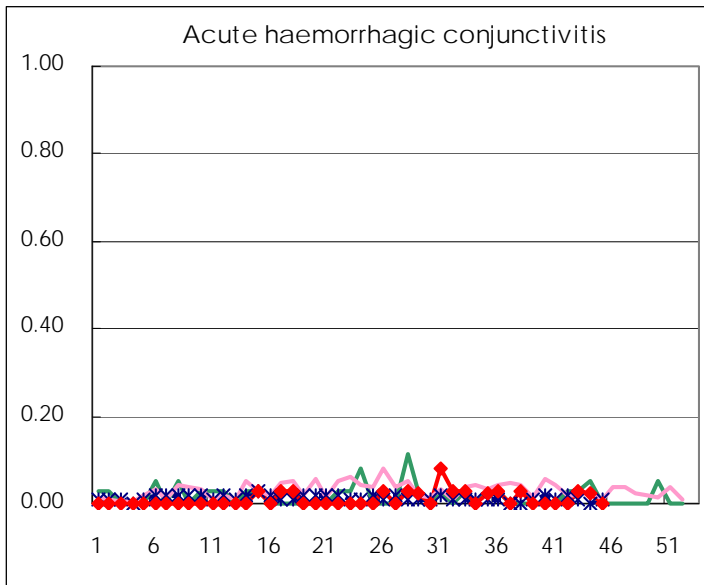
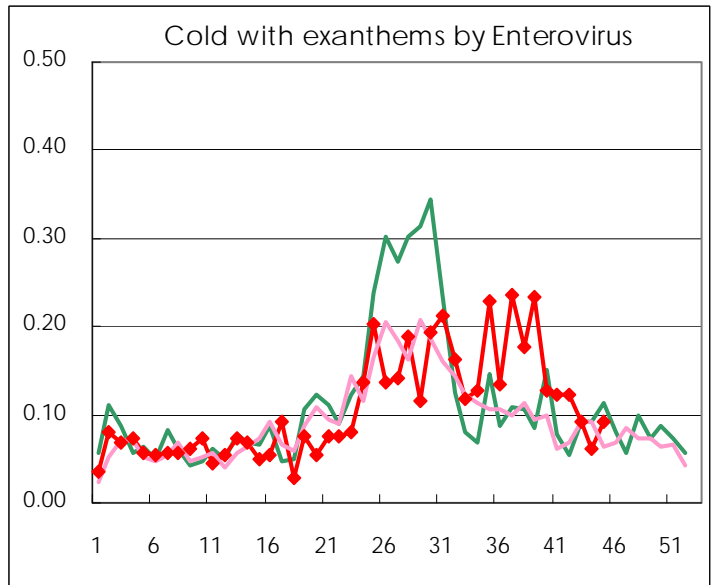
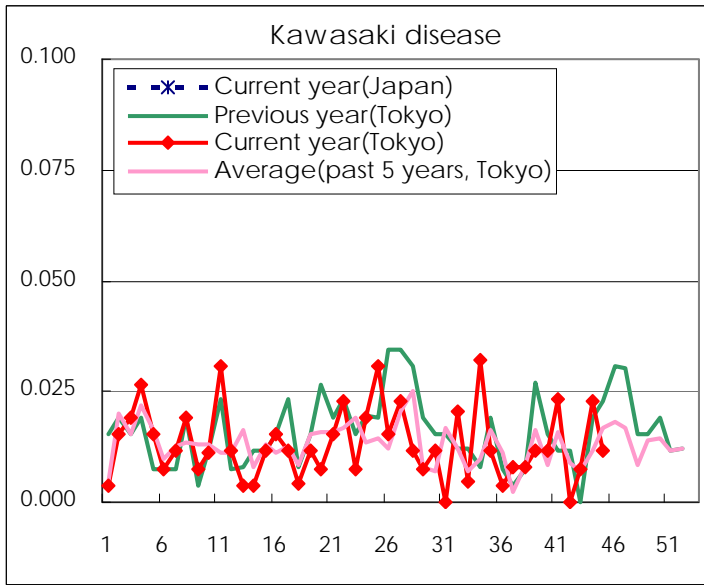
Diseases	Tokyo				
	42nd	43rd	44th	45th	/sentinel
Respiratory syncytial virus infection	297	254	171	172	0.66
Pharyngoconjunctival fever	84	82	77	115	0.44
Group A streptococcal pharyngitis	339	342	373	544	2.10
Infectious gastroenteritis	1,073	1,244	1,473	2,459	9.49
Chickenpox	103	180	141	241	0.93
Hand, foot, and mouth disease	103	103	103	125	0.48
Erythema infectiosum	13	12	10	19	0.07
Exanthem subitum	172	164	146	193	0.75
Pertussis	3	9	11	10	0.04
Herpangina	46	58	25	26	0.10
Mumps	51	59	48	70	0.27
Kawasaki disease		2	6	3	0.01
Cold with exanthems by Enterovirus	32	24	16	24	0.09
Influenza	19	16	20	38	0.09
Acute hemorrhagic conjunctivitis		1	1		
Epidemic keratoconjunctivitis	17	14	15	16	0.41
Bacterial meningitis		3		3	0.13
Aseptic meningitis	4	2	4	2	0.08
Mycoplasma pneumonia	33	36	29	43	1.79
Chlamydial pneumonia (excluding psittacosis)	1	1	1		
Influenza-Associated Hospitalizations	1		1		

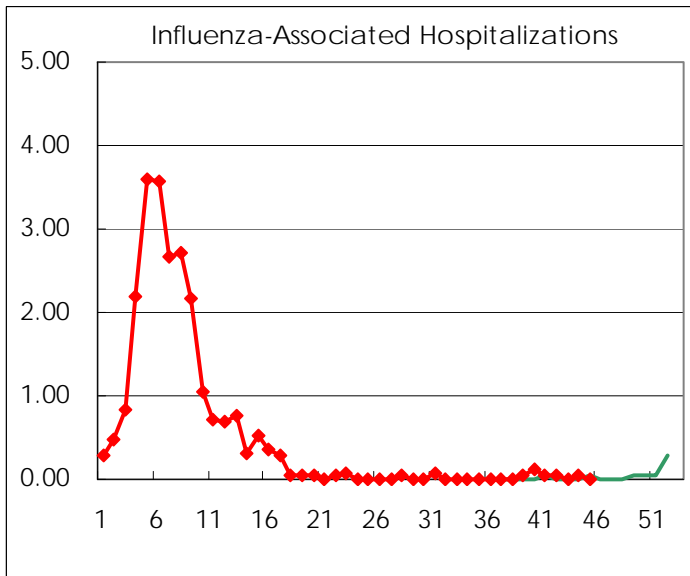
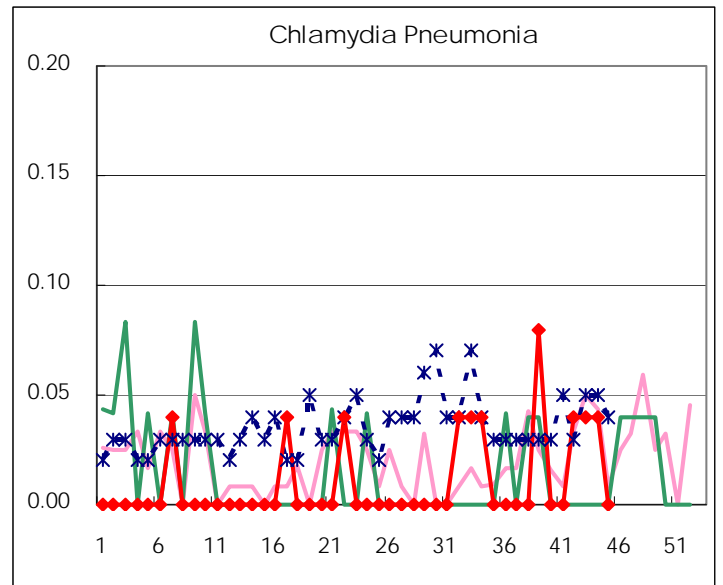
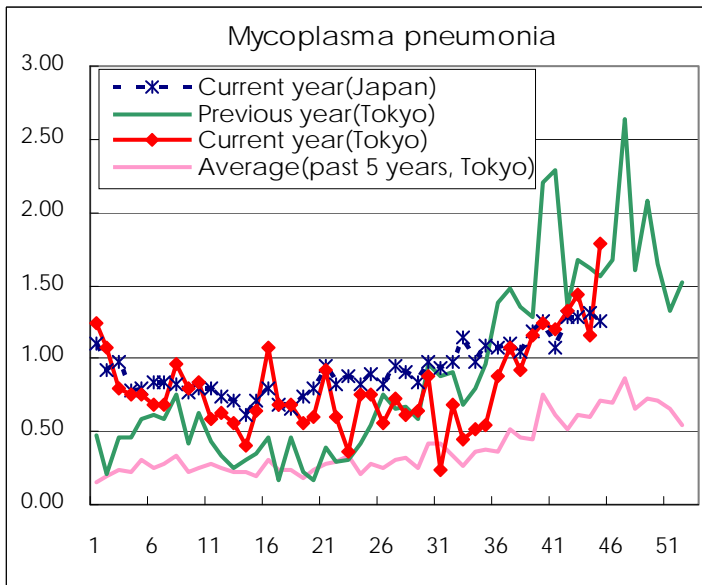
( Blank means 0. )

# Disease Trend Graph (weekly reported cases per sentinel in comparison)









Number of sentinel facilities for weekly reporting		
Types of sentinels	Number of sentinels	Sentinels having reported
Pediatric	264	259
Influenza	419	413
Ophthalmic	39	39
Specially-designated	25	24

Tokyo Metropolitan Government  
Infectious Disease Surveillance Center