

---

INFECTIOUS DISEASES WEEKLY REPORT

# TOKYO IDWR

Tokyo Metropolitan Infectious Disease Surveillance Center

## 22 November 2012 / Number 46

### Surveillance System in Tokyo, Japan

#### The infectious diseases which all physicians must report

All physicians must report to health centers the incidence of the diseases which are shown at page one. Health centers electronically report the individual cases to Tokyo Metropolitan Infectious Disease Surveillance Center.

#### The infectious diseases required to be reported by the sentinels

The numbers of patients who visit the sentinel clinics or hospitals during a week are reported to health centers in Tokyo. And they electronically report the numbers to Tokyo Metropolitan Infectious Disease Surveillance Center. We have about 500 sentinel clinics and hospitals in Tokyo.

1st Week is early January and 52nd Week is end of December.

Tokyo Metropolitan Institute of Public Health

TEL:81-3-3363-3213 FAX:81-3-5332-7365

e-mail:[idsc@tokyo-eiken.go.jp](mailto:idsc@tokyo-eiken.go.jp)

URL:[idsc.tokyo-eiken.go.jp/](http://idsc.tokyo-eiken.go.jp/)

---

## Number of patients with the diseases which all physicians must report

Category	Diseases	Tokyo				Japan		
		43rd	44th	45th	46th	Cum 2012	46th	Cum 2012
I	Ebola hemorrhagic fever							
	Crimean-Congo hemorrhagic fever							
	Smallpox							
	South American hemorrhagic fever							
	Plague							
	Marburg disease							
	Lassa fever							
II	Acute poliomyelitis							
	Tuberculosis	89	98	76	78	4,021	348	25,590
	Diphtheria							
	Severe Acute Respiratory Syndrome(SARS)							
	Avian influenza H5N1							
III	Cholera							3
	Shigellosis	1	1	1	1	62	1	193
	Enterohemorrhagic Escherichia coli infection	7	4	4	4	248	48	3,568
	Typhoid fever	1				10		30
	Paratyphoid fever	1	1			10		20
IV	Hepatitis E	1		1		16		101
	West Nile fever							
	Hepatitis A			1	2	32	2	148
	Echinococcosis							13
	Yellow fever							
	Psittacosis							6
	Omsk hemorrhagic fever							
	Relapsing fever							
	Kyasanur forest disease							
	Q fever							
	Rabies							
	Coccidioidomycosis					1		2
	Monkeypox							
	Hemorrhagic fever with renal syndrome							
	Western equine encephalitis							
	Tick-borne encephalitis							
	Anthrax							
	Chikungunya fever					3		8
	Scrub typhus(Tsutsugamushi disease)			1		4	16	253
	Dengue fever	2	3	1	2	53	4	200
	Eastern equine encephalitis							
	Avian influenza (excluding H5N1)							
	Nipah virus infection							
	Japanese spotted fever						4	159
	Japanese encephalitis							2
	Hantavirus pulmonary syndrome							
	Herpes B virus infection							
	Glanders							
	Brucellosis							
	Venezuelan equine encephalitis							
	Hendra virus infection							
	Epidemic typhus							
Botulism							3	
Malaria					20		68	
Tularemia								
Lyme disease							10	
Lyssavirus infection(excluding rabies)								
Rift valley fever								
Melioidosis								
Legionellosis			2		49	13	758	
Leptospirosis		1			5		28	
Rocky mountain spotted fever								

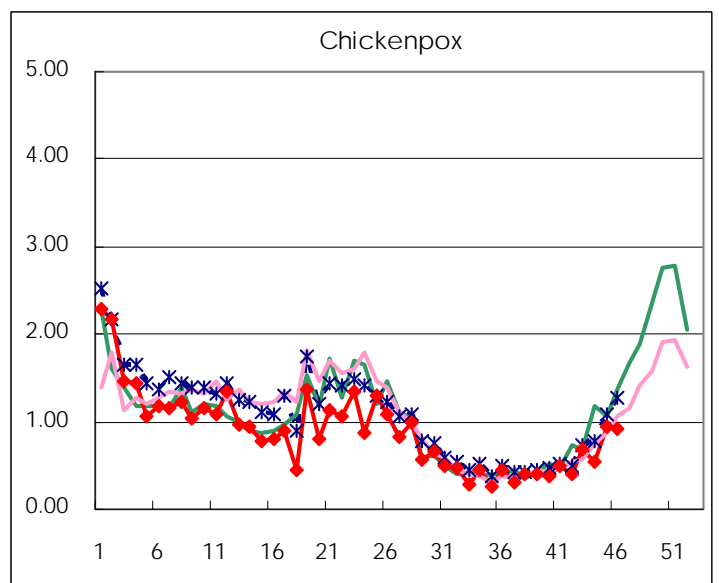
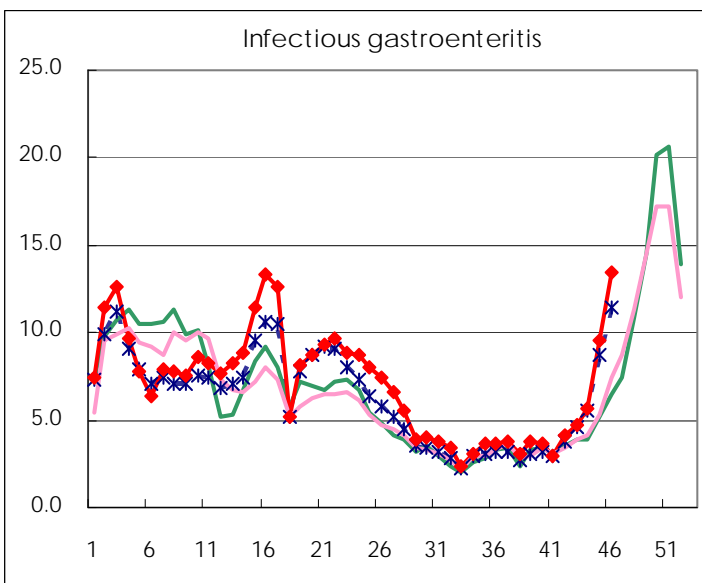
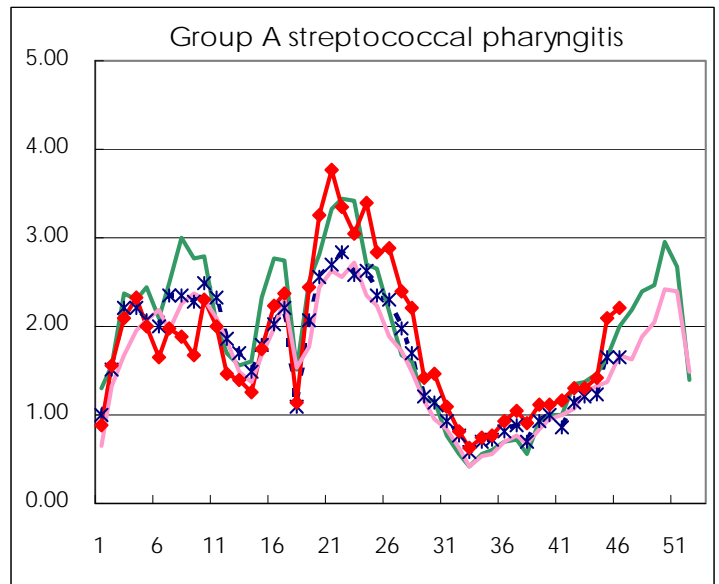
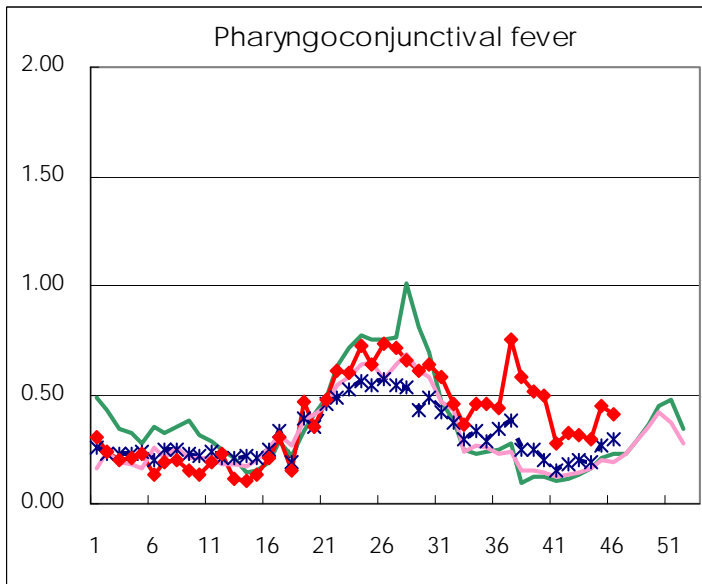
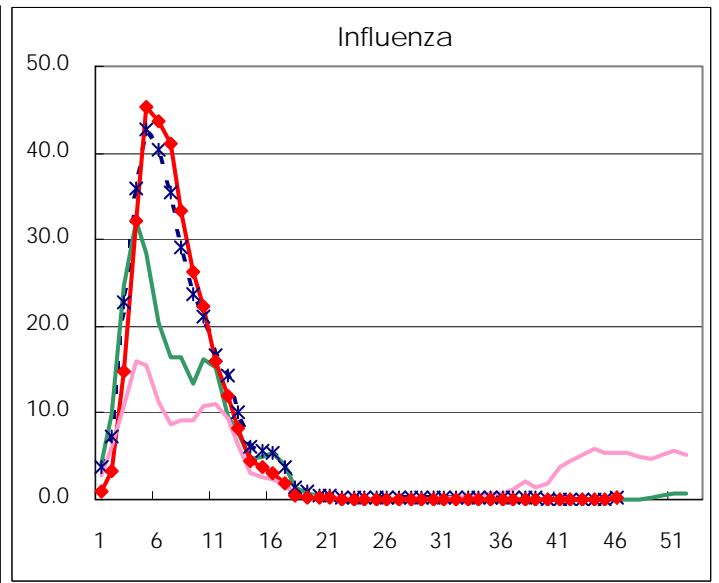
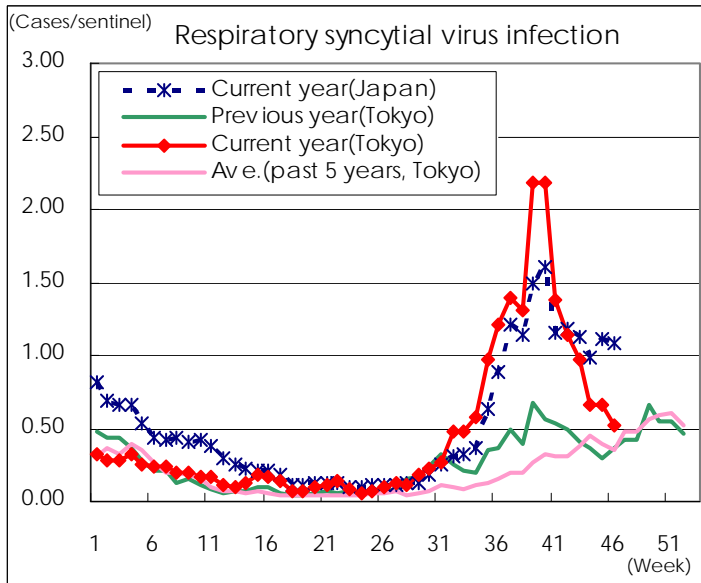
Category	Diseases	Tokyo				Japan		
		43rd	44th	45th	46th	Cum 2012	46th	Cum 2012
V	Amebiasis	3	3	3	3	167	21	797
	Viral hepatitis(excluding hepatitis A and E)	1	4	1	2	50	1	196
	Acute encephalitis(excluding JE and WNE)	1		1		29	1	320
	Cryptosporidiosis					2		6
	Creutzfeldt-Jakob disease				1	14	1	158
	Severe invasive streptococcal infections(TSLS)	1		1	1	22	3	222
	Acquired immunodeficiency syndrome (AIDS)	8	9	7	8	408	12	1,231
	Giardiasis		1	1	1	14	2	63
	Meningococcal meningitis							12
	Congenital rubella syndrome							1
	Syphilis	3	4	7	6	253	10	764
	Tetanus					4	2	99
	Vancomycin-resistant S. aureus infection							
	Vancomycin-resistant Enterococcus infection		1			10		82
	Rubella	16	12	8	15	532	30	2,039
	Measles				3	76	3	278

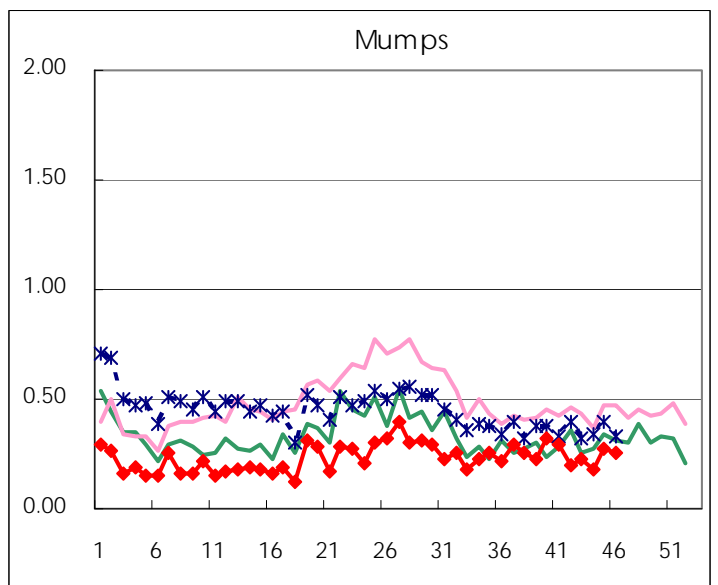
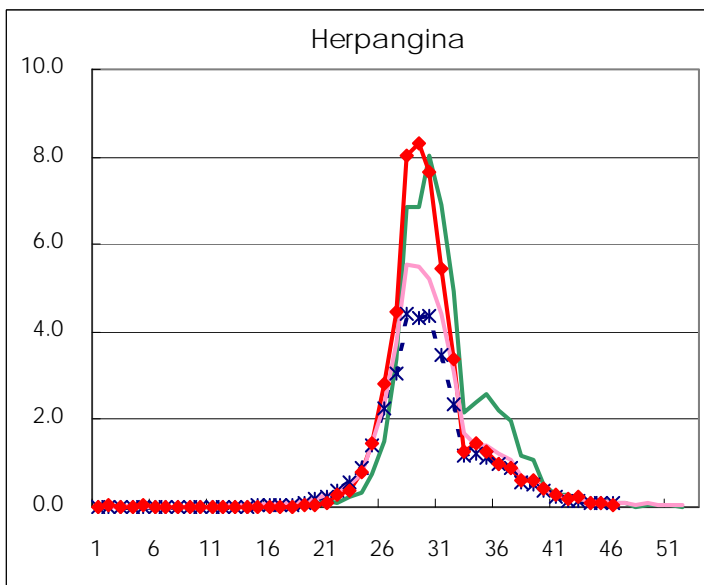
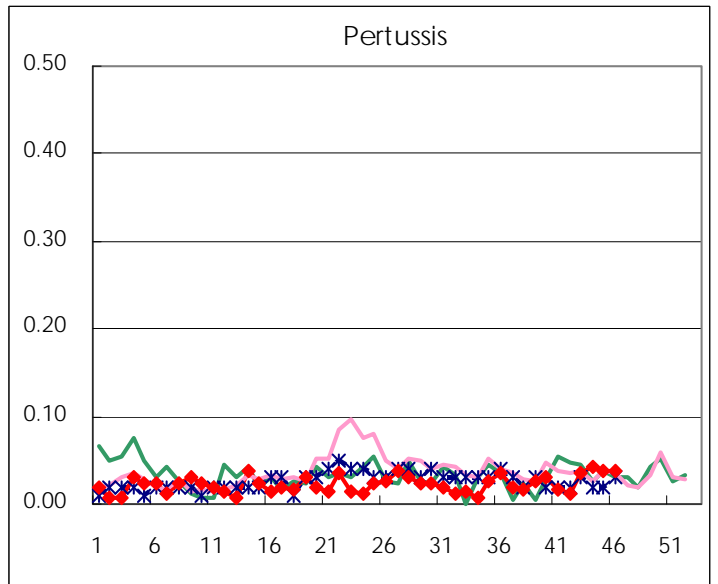
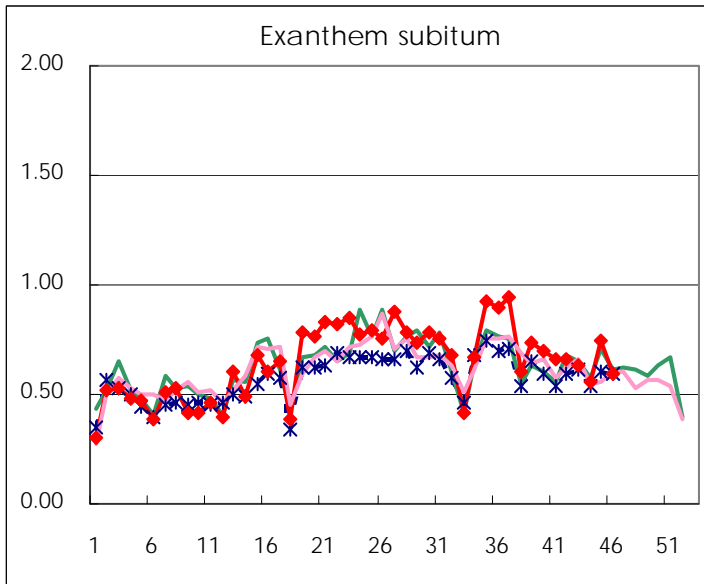
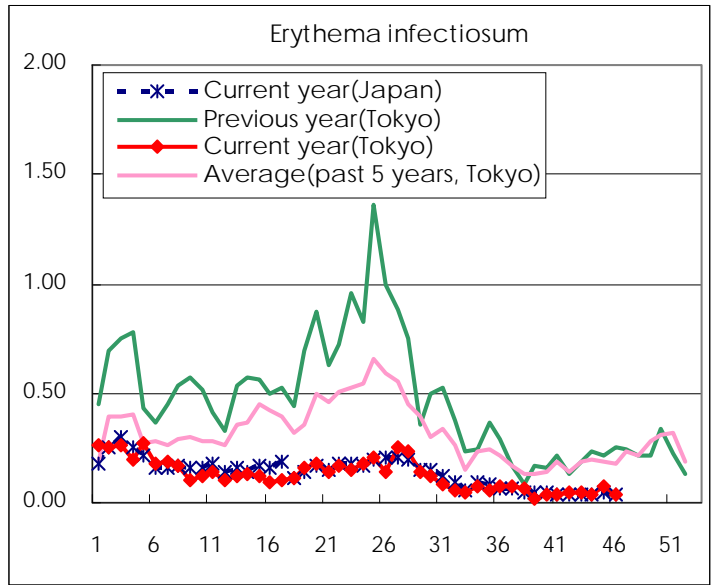
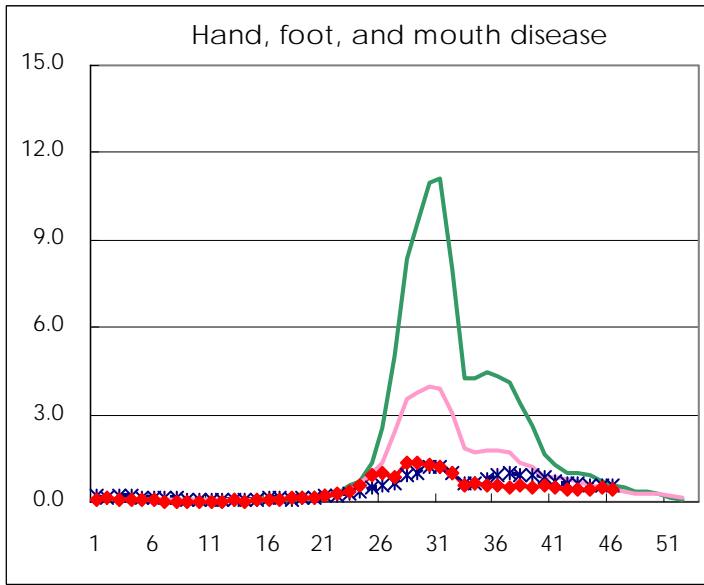
Number of patients with the diseases to be reported  
by the designated clinics and hospitals

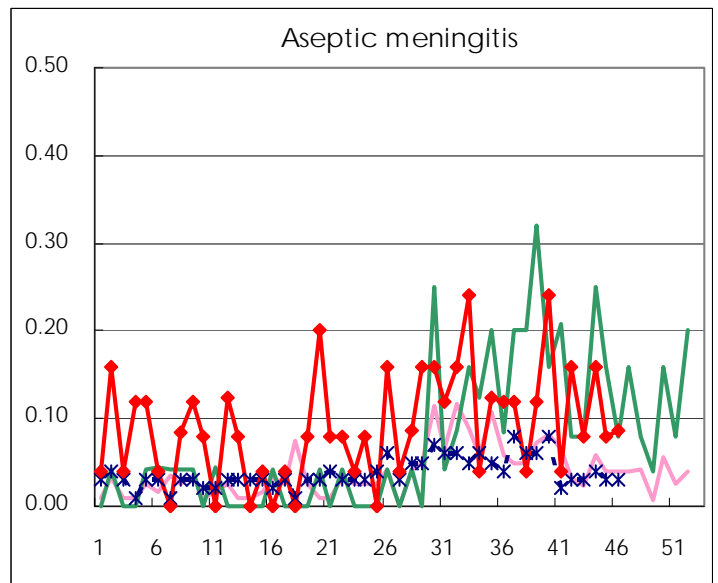
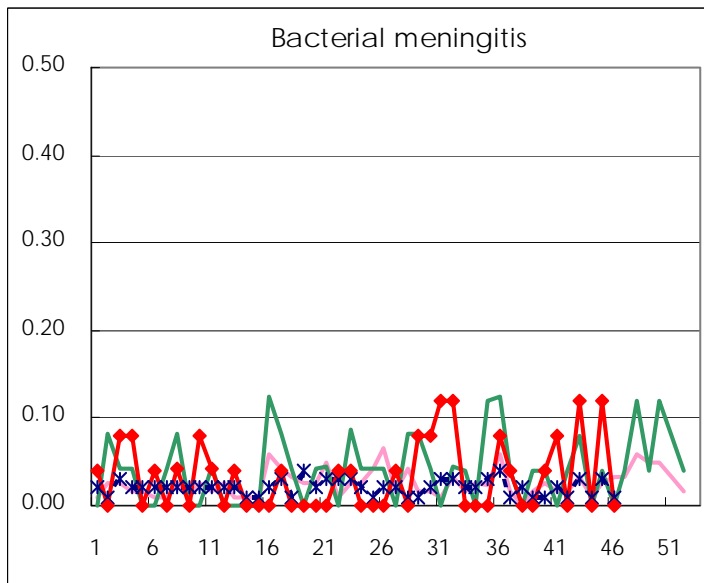
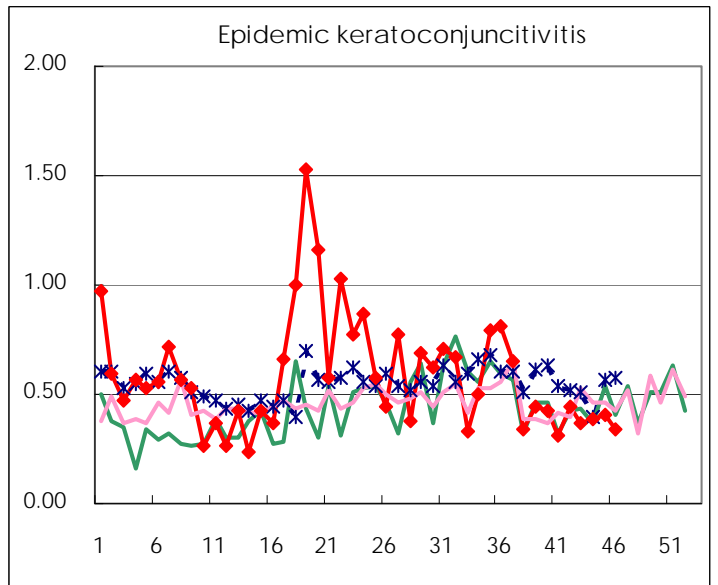
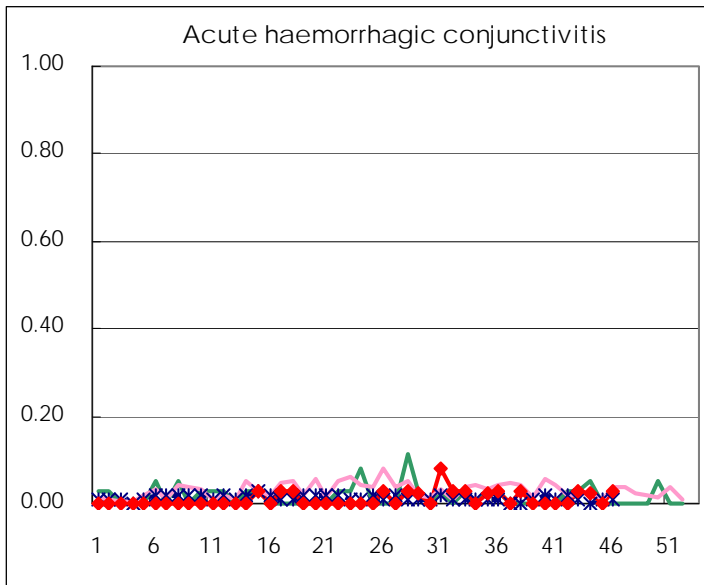
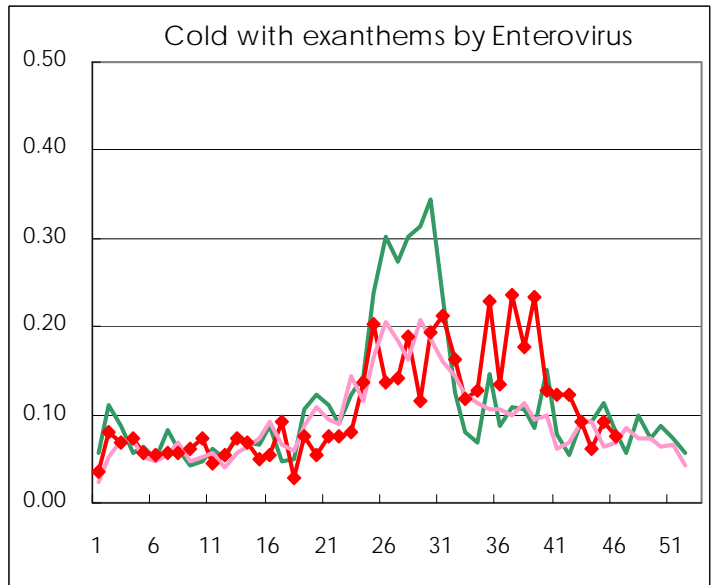
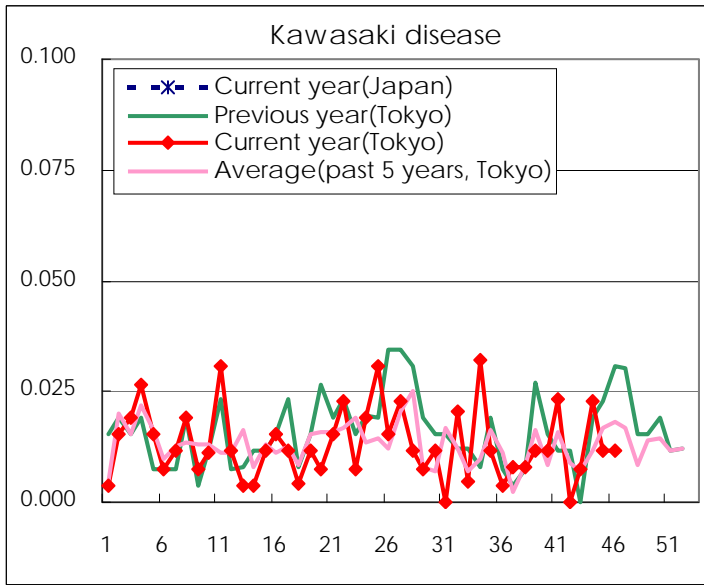
Diseases	Tokyo				
	43rd	44th	45th	46th	/sentinel
Respiratory syncytial virus infection	254	171	173	135	0.52
Pharyngoconjunctival fever	82	77	115	106	0.41
Group A streptococcal pharyngitis	342	373	544	579	2.22
Infectious gastroenteritis	1,244	1,473	2,463	3,508	13.44
Chickenpox	180	141	242	239	0.92
Hand, foot, and mouth disease	103	103	125	118	0.45
Erythema infectiosum	12	10	19	9	0.03
Exanthem subitum	164	146	193	155	0.59
Pertussis	9	11	10	10	0.04
Herpangina	58	25	26	17	0.07
Mumps	59	48	70	67	0.26
Kawasaki disease	2	6	3	3	0.01
Cold with exanths by Enterovirus	24	16	24	20	0.08
Influenza	16	20	39	72	0.17
Acute hemorrhagic conjunctivitis	1	1		1	0.03
Epidemic keratoconjunctivitis	14	15	16	13	0.34
Bacterial meningitis	3		3		
Aseptic meningitis	2	4	2	2	0.09
Mycoplasma pneumonia	36	29	43	29	1.26
Chlamydial pneumonia (excluding psittacosis)	1	1		1	0.04
Influenza-Associated Hospitalizations		1			

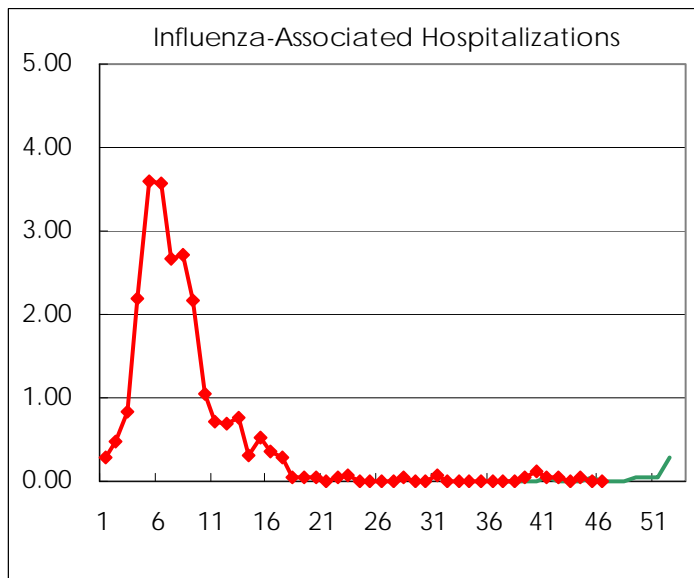
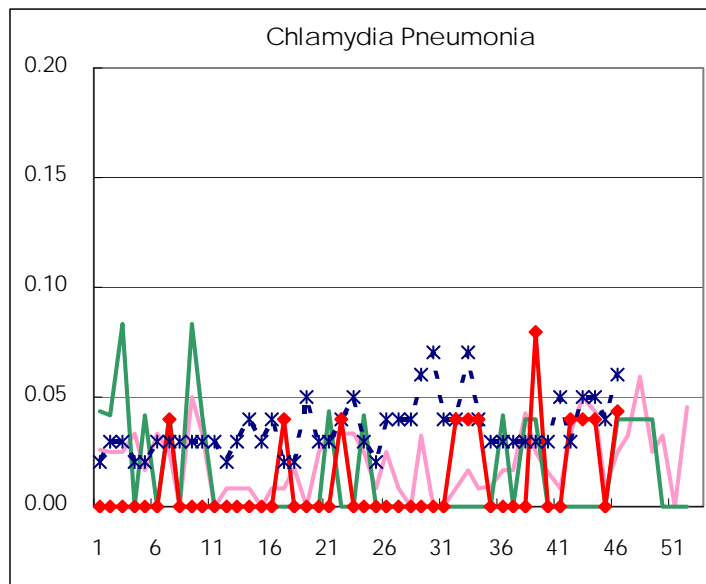
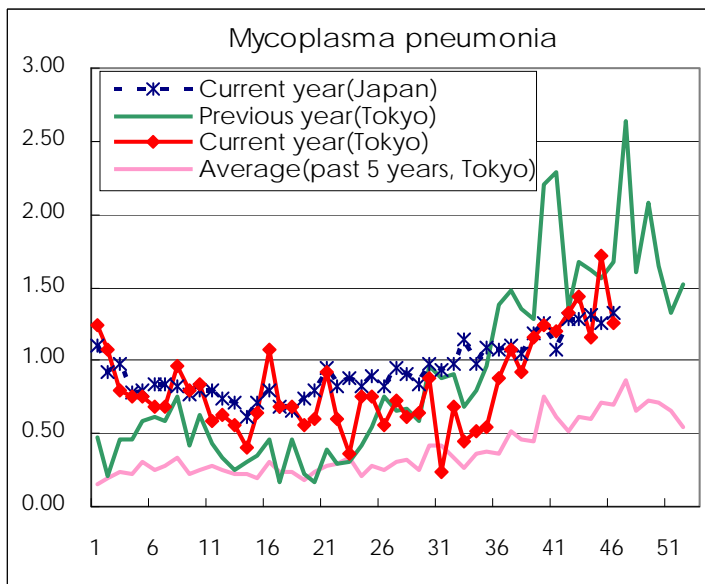
( Blank means 0. )

# Disease Trend Graph (weekly reported cases per sentinel in comparison)









Number of sentinel facilities for weekly reporting		
Types of sentinels	Number of sentinels	Sentinels having reported
Pediatric	264	261
Influenza	419	413
Ophthalmic	39	38
Specially-designated	25	23

Tokyo Metropolitan Government  
Infectious Disease Surveillance Center