
INFECTIOUS DISEASES WEEKLY REPORT

TOKYO IDWR

Tokyo Metropolitan Infectious Disease Surveillance Center

29 November 2012 / Number 47

Surveillance System in Tokyo, Japan

The infectious diseases which all physicians must report

All physicians must report to health centers the incidence of the diseases which are shown at page one. Health centers electronically report the individual cases to Tokyo Metropolitan Infectious Disease Surveillance Center.

The infectious diseases required to be reported by the sentinels

The numbers of patients who visit the sentinel clinics or hospitals during a week are reported to health centers in Tokyo. And they electronically report the numbers to Tokyo Metropolitan Infectious Disease Surveillance Center. We have about 500 sentinel clinics and hospitals in Tokyo.

1st Week is early January and 52nd Week is end of December.

Tokyo Metropolitan Institute of Public Health

TEL:81-3-3363-3213 FAX:81-3-5332-7365

e-mail:idsc@tokyo-eiken.go.jp

URL:idsc.tokyo-eiken.go.jp/

Number of patients with the diseases which all physicians must report

Category	Diseases	Tokyo				Japan		
		44th	45th	46th	47th	Cum 2012	47th	Cum 2012
I	Ebola hemorrhagic fever							
	Crimean-Congo hemorrhagic fever							
	Smallpox							
	South American hemorrhagic fever							
	Plague							
	Marburg disease							
	Lassa fever							
II	Acute poliomyelitis							
	Tuberculosis	98	77	87	65	4,096	297	26,018
	Diphtheria							
	Severe Acute Respiratory Syndrome(SARS)							
	Avian influenza H5N1							
III	Cholera							3
	Shigellosis	1	1	1	2	64	3	197
	Enterohemorrhagic Escherichia coli infection	4	4	4	2	250	35	3,607
	Typhoid fever					10	1	31
	Paratyphoid fever	1				10		20
IV	Hepatitis E		1	1		17	3	105
	West Nile fever							
	Hepatitis A		1	2	1	33	2	155
	Echinococcosis							13
	Yellow fever							
	Psittacosis							6
	Omsk hemorrhagic fever							
	Relapsing fever							
	Kyasanur forest disease							
	Q fever							
	Rabies							
	Coccidioidomycosis					1		2
	Monkeypox							
	Hemorrhagic fever with renal syndrome							
	Western equine encephalitis							
	Tick-borne encephalitis							
	Anthrax							
	Chikungunya fever					3	1	9
	Scrub typhus(Tsutsugamushi disease)	1			10	14	23	292
	Dengue fever	3	1	2		53	2	202
	Eastern equine encephalitis							
	Avian influenza (excluding H5N1)							
	Nipah virus infection							
	Japanese spotted fever							161
	Japanese encephalitis							2
	Hantavirus pulmonary syndrome							
	Herpes B virus infection							
	Glanders							
	Brucellosis							
	Venezuelan equine encephalitis							
	Hendra virus infection							
	Epidemic typhus							
Botulism							3	
Malaria			1	1	22		70	
Tularemia								
Lyme disease							10	
Lyssavirus infection(excluding rabies)								
Rift valley fever								
Melioidosis								
Legionellosis		2	1	2	52	20	785	
Leptospirosis	1				5		28	
Rocky mountain spotted fever								

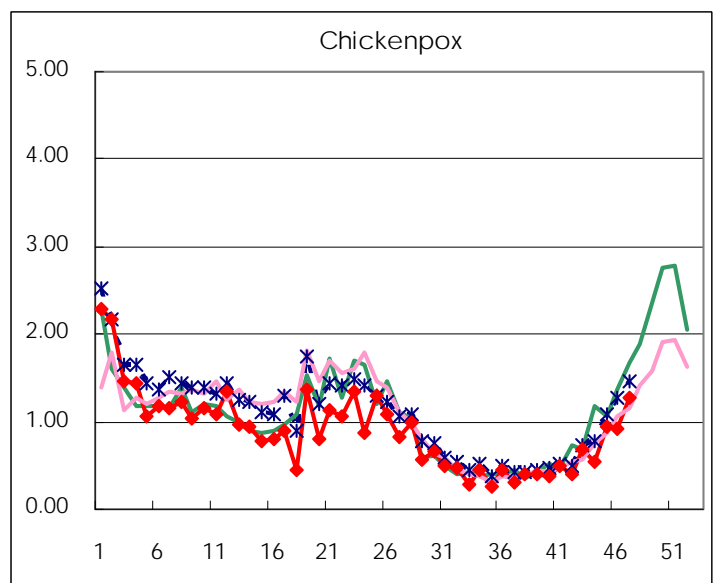
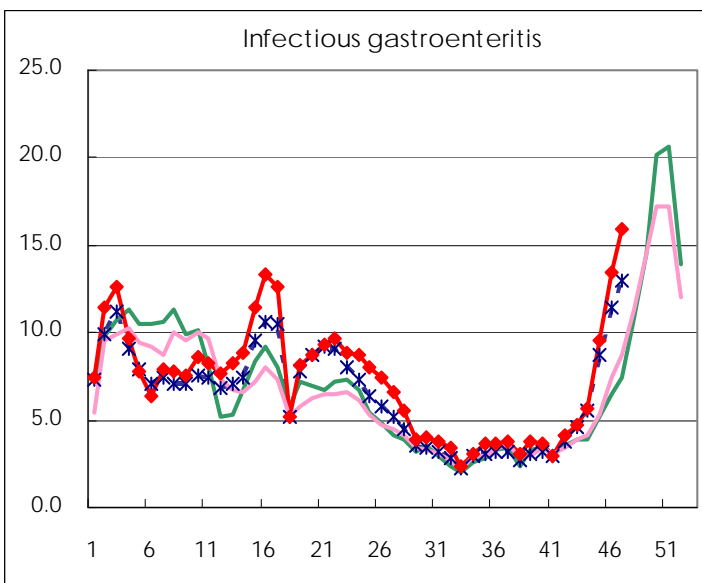
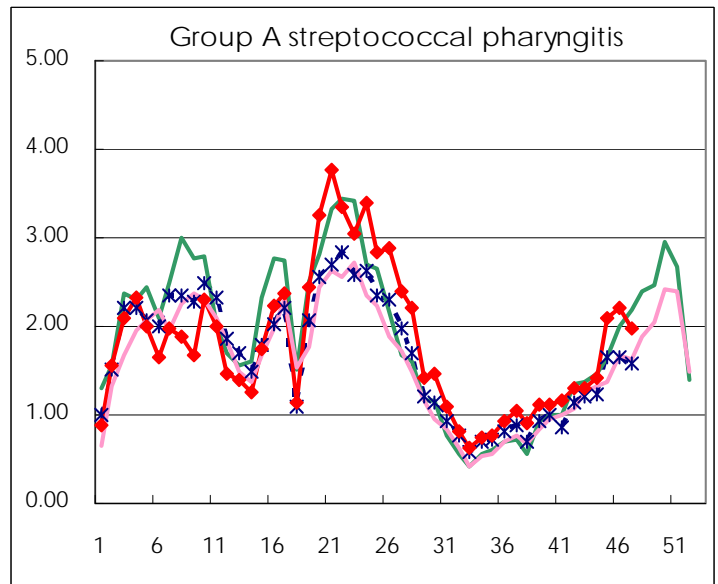
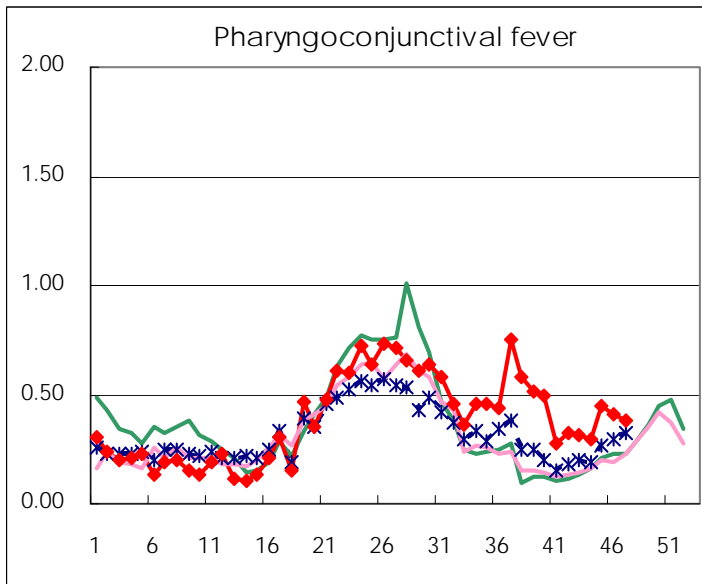
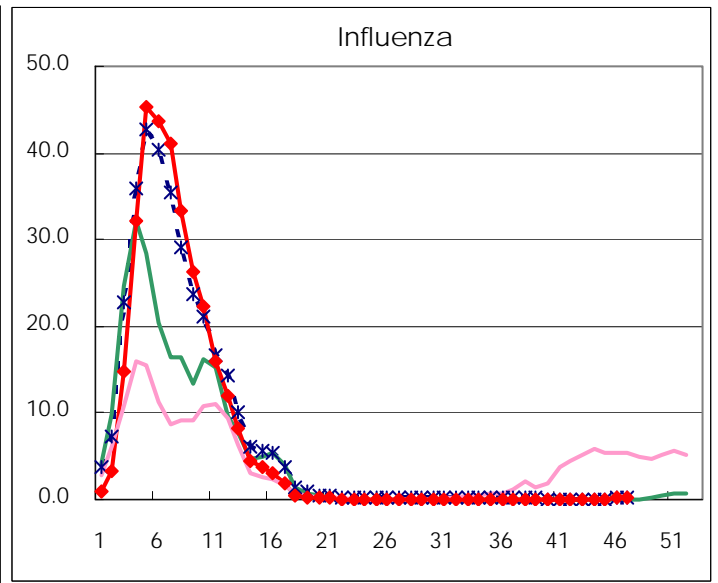
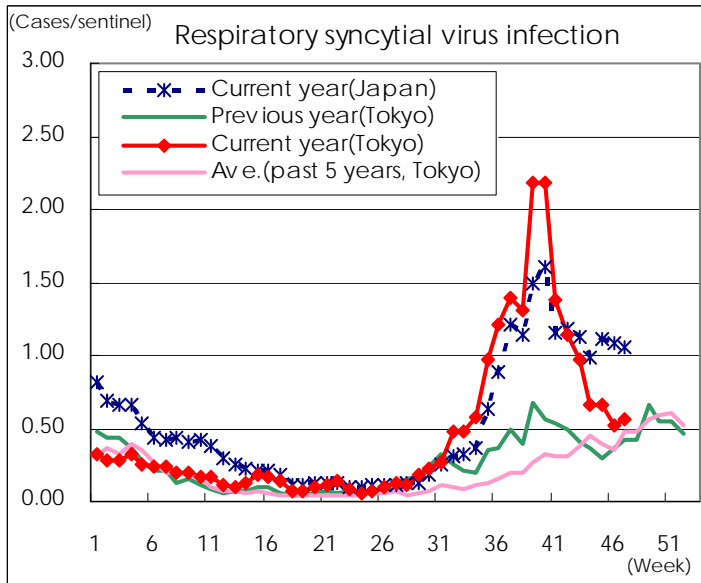
Category	Diseases	Tokyo				Japan		
		44th	45th	46th	47th	Cum 2012	47th	Cum 2012
V	Amebiasis	3	3	3	2	169	7	813
	Viral hepatitis(excluding hepatitis A and E)	4	1	2	1	51	2	202
	Acute encephalitis(excluding JE and WNE)		1			29		321
	Cryptosporidiosis					2		6
	Creutzfeldt-Jakob disease			1		14	3	161
	Severe invasive streptococcal infections(TSLS)		1	1		22	3	227
	Acquired immunodeficiency syndrome (AIDS)	9	7	8	5	413	16	1,263
	Giardiasis	1	1	1	2	16	1	65
	Meningococcal meningitis							12
	Congenital rubella syndrome						1	3
	Syphilis	4	7	7	6	260	3	781
	Tetanus				1	5		100
	Vancomycin-resistant S. aureus infection							
	Vancomycin-resistant Enterococcus infection	1				10	1	83
	Rubella	12	8	14	16	548	43	2,093
	Measles			3	1	77	5	282

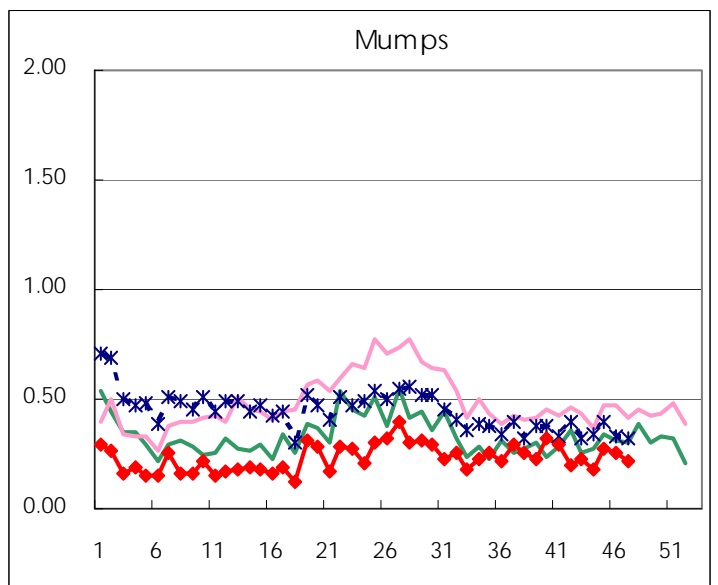
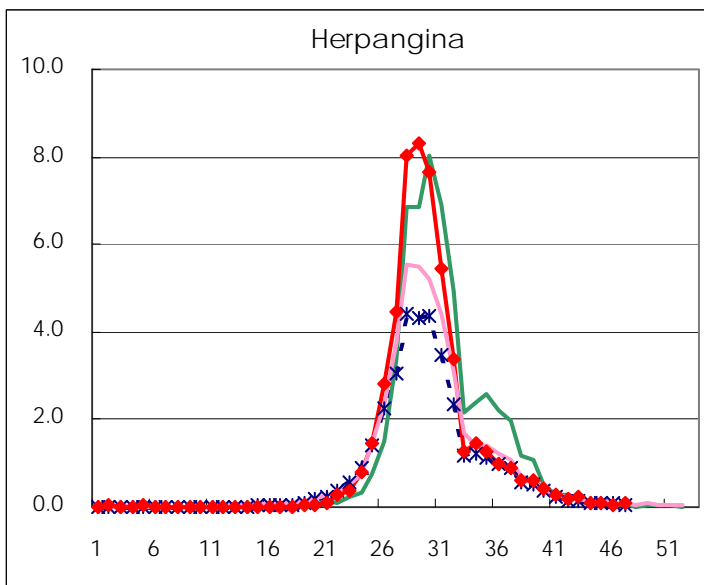
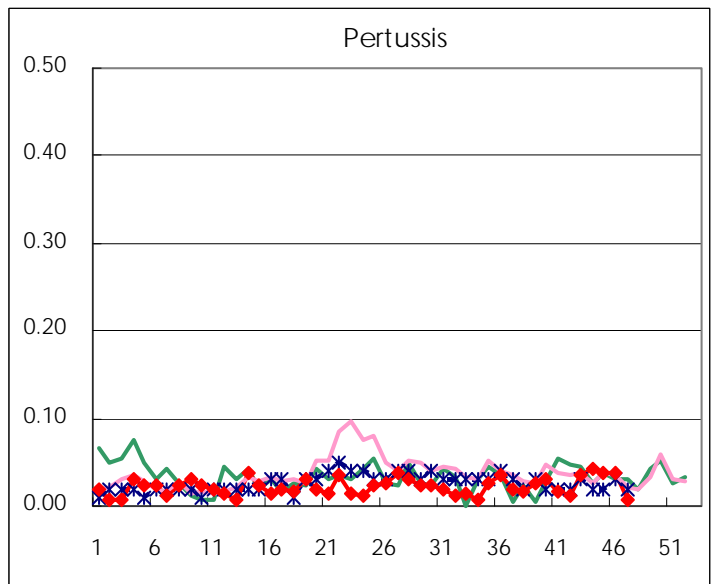
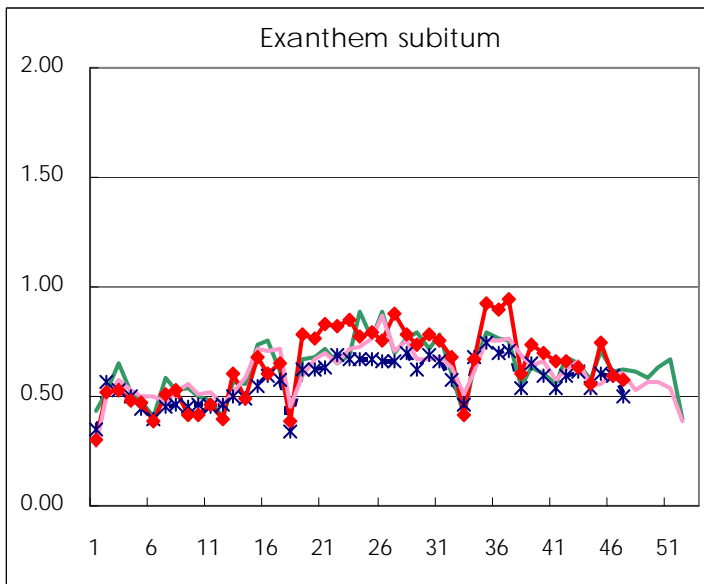
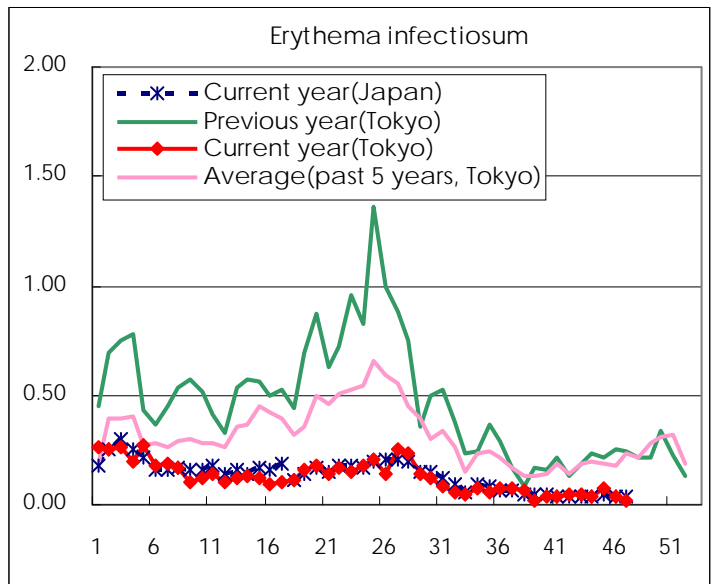
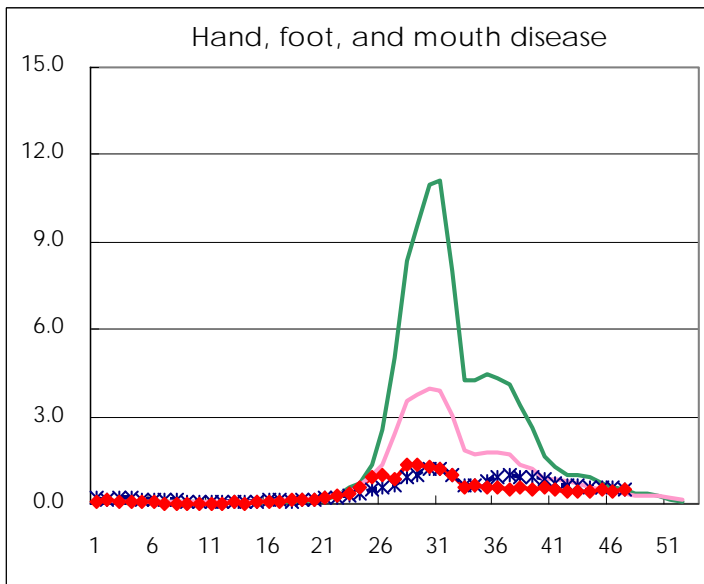
Number of patients with the diseases to be reported
by the designated clinics and hospitals

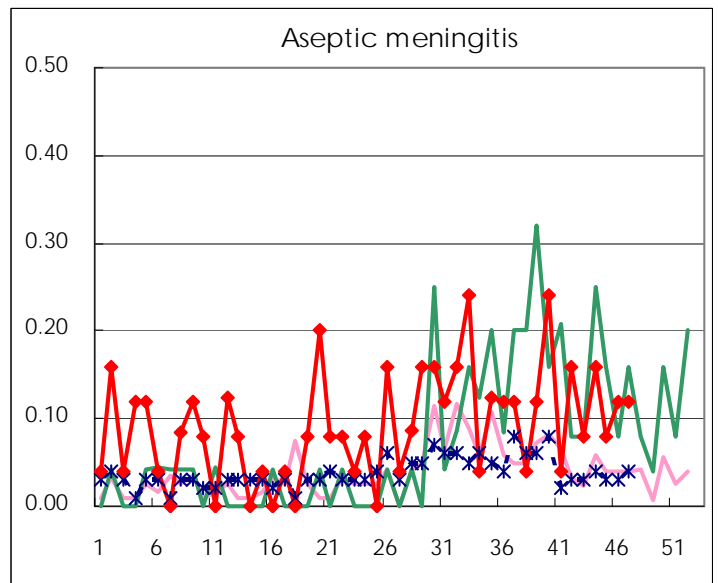
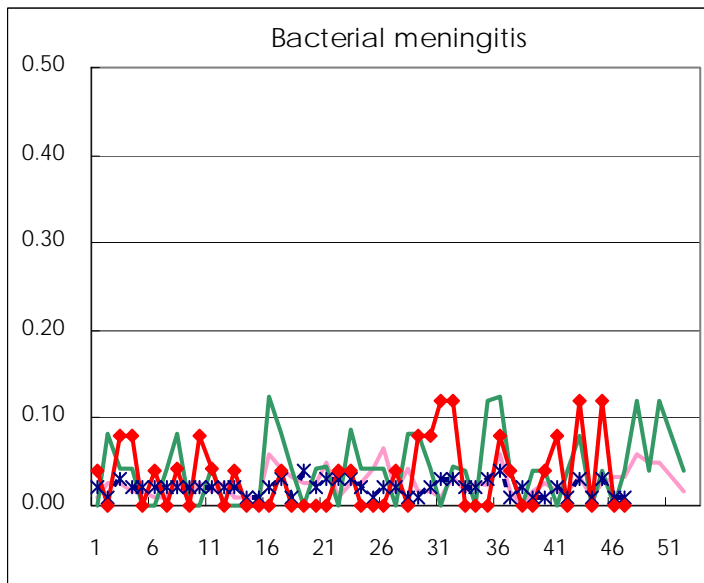
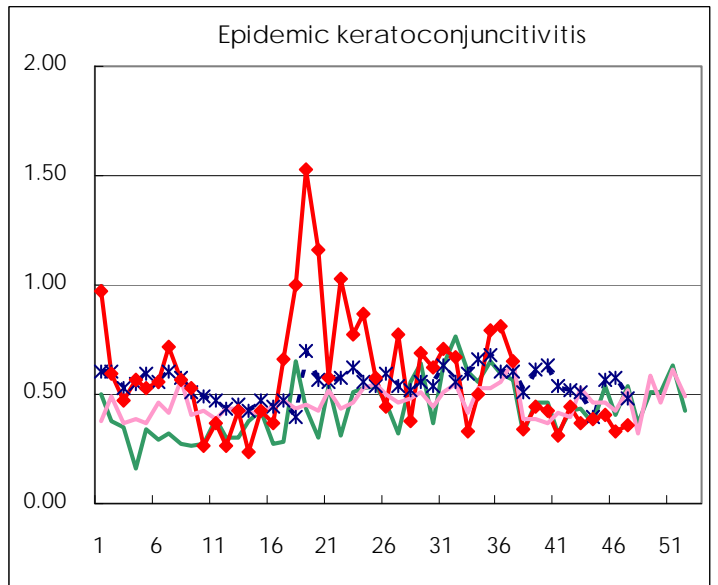
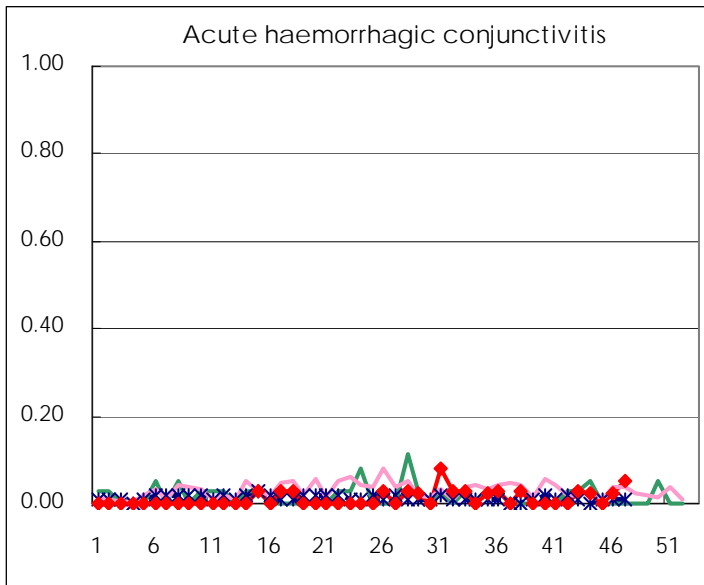
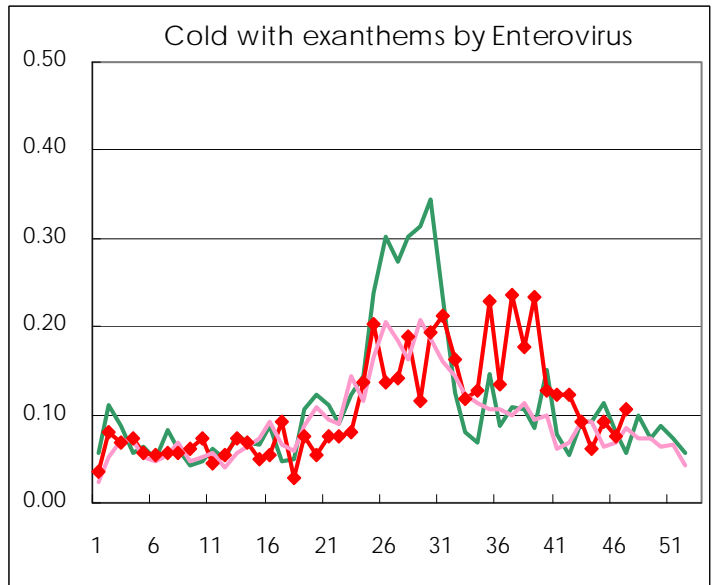
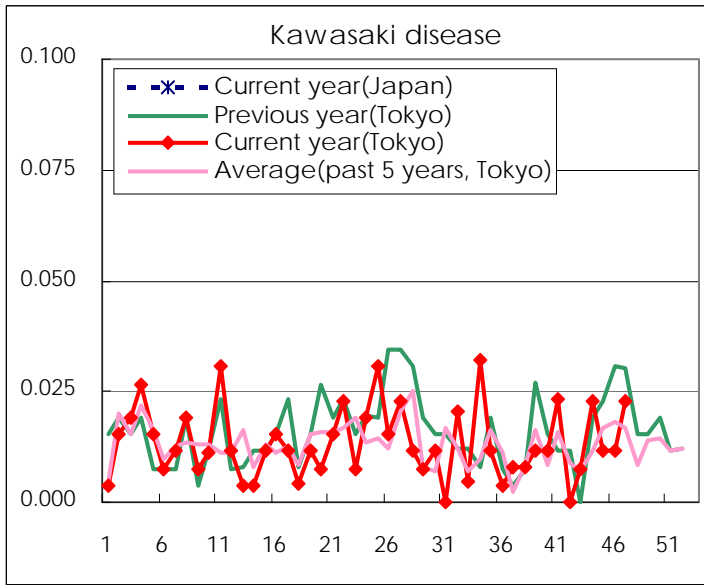
Diseases	Tokyo				
	44th	45th	46th	47th	/sentinel
Respiratory syncytial virus infection	171	173	135	150	0.57
Pharyngoconjunctival fever	77	115	106	99	0.38
Group A streptococcal pharyngitis	373	544	579	521	1.98
Infectious gastroenteritis	1,473	2,463	3,508	4,179	15.89
Chickenpox	141	242	239	336	1.28
Hand, foot, and mouth disease	103	125	118	124	0.47
Erythema infectiosum	10	19	9	6	0.02
Exanthem subitum	146	193	155	152	0.58
Pertussis	11	10	10	2	0.01
Herpangina	25	26	17	21	0.08
Mumps	48	70	67	56	0.21
Kawasaki disease	6	3	3	6	0.02
Cold with exanthems by Enterovirus	16	24	20	28	0.11
Influenza	20	39	72	100	0.24
Acute hemorrhagic conjunctivitis	1		1	2	0.05
Epidemic keratoconjunctivitis	15	16	13	14	0.36
Bacterial meningitis		3			
Aseptic meningitis	4	2	3	3	0.12
Mycoplasma pneumonia	29	43	32	18	0.72
Chlamydial pneumonia (excluding psittacosis)	1		1	1	0.04
Influenza-Associated Hospitalizations	1				

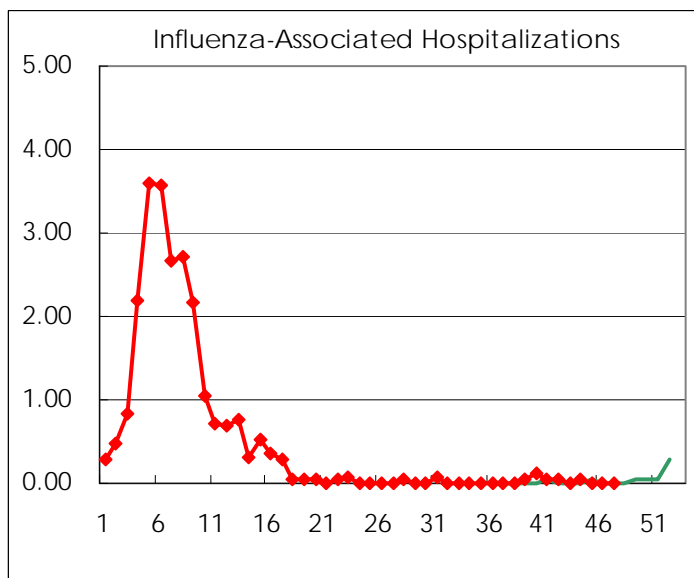
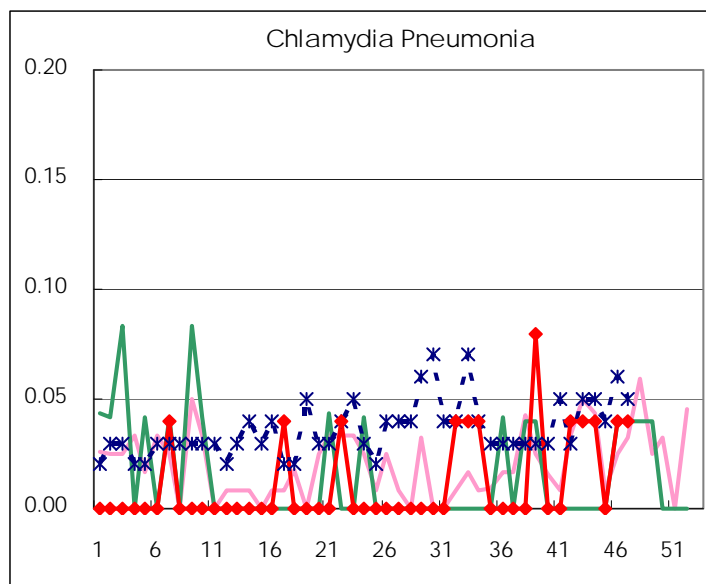
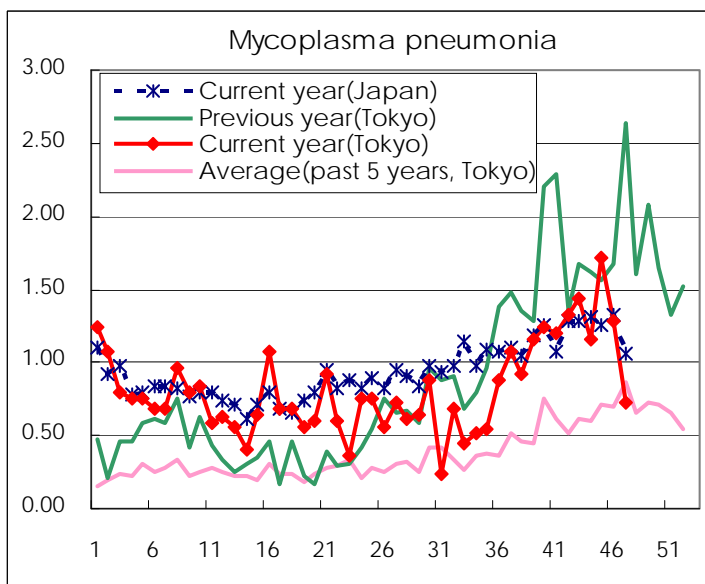
(Blank means 0.)

Disease Trend Graph (weekly reported cases per sentinel in comparison)









Number of sentinel facilities for weekly reporting		
Types of sentinels	Number of sentinels	Sentinels having reported
Pediatric	264	263
Influenza	419	417
Ophthalmic	39	39
Specially-designated	25	25

Tokyo Metropolitan Government
Infectious Disease Surveillance Center