

---

INFECTIOUS DISEASES WEEKLY REPORT

# TOKYO IDWR

Tokyo Metropolitan Infectious Disease Surveillance Center

## 6 December 2012 / Number 48

### Surveillance System in Tokyo, Japan

The infectious diseases which all physicians must report

All physicians must report to health centers the incidence of the diseases which are shown at page one. Health centers electronically report the individual cases to Tokyo Metropolitan Infectious Disease Surveillance Center.

The infectious diseases required to be reported by the sentinels

The numbers of patients who visit the sentinel clinics or hospitals during a week are reported to health centers in Tokyo. And they electronically report the numbers to Tokyo Metropolitan Infectious Disease Surveillance Center. We have about 500 sentinel clinics and hospitals in Tokyo.

1st Week is early January and 52nd Week is end of December.

Tokyo Metropolitan Institute of Public Health

TEL:81-3-3363-3213 FAX:81-3-5332-7365

e-mail:[idsc@tokyo-eiken.go.jp](mailto:idsc@tokyo-eiken.go.jp)

URL:[idsc.tokyo-eiken.go.jp/](http://idsc.tokyo-eiken.go.jp/)

---

## Number of patients with the diseases which all physicians must report

Category	Diseases	Tokyo				Japan		
		45th	46th	47th	48th	Cum 2012	48th	Cum 2012
I	Ebola hemorrhagic fever							
	Crimean-Congo hemorrhagic fever							
	Smallpox							
	South American hemorrhagic fever							
	Plague							
	Marburg disease							
	Lassa fever							
II	Acute poliomyelitis							
	Tuberculosis	77	95	72	50	4,162	329	26,563
	Diphtheria							
	Severe Acute Respiratory Syndrome(SARS)							
	Avian influenza H5N1							
III	Cholera							3
	Shigellosis	1	1	2	3	67	3	201
	Enterohemorrhagic Escherichia coli infection	4	4	2	2	252	46	3,660
	Typhoid fever					10		31
	Paratyphoid fever					10		20
IV	Hepatitis E	1	1		2	19	2	107
	West Nile fever							
	Hepatitis A	1	2	1	2	35	1	156
	Echinococcosis						1	14
	Yellow fever							
	Psittacosis							6
	Omsk hemorrhagic fever							
	Relapsing fever							
	Kyasanur forest disease							
	Q fever							
	Rabies							
	Coccidioidomycosis					1		2
	Monkeypox							
	Hemorrhagic fever with renal syndrome							
	Western equine encephalitis							
	Tick-borne encephalitis							
	Anthrax							
	Chikungunya fever					3		9
	Scrub typhus(Tsutsugamushi disease)			10		14	24	321
	Dengue fever	1	2			53	6	210
	Eastern equine encephalitis							
	Avian influenza (excluding H5N1)							
	Nipah virus infection							
	Japanese spotted fever							163
	Japanese encephalitis							2
	Hantavirus pulmonary syndrome							
	Herpes B virus infection							
	Glanders							
	Brucellosis							
	Venezuelan equine encephalitis							
	Hendra virus infection							
	Epidemic typhus							
Botulism							3	
Malaria		1	1	1	23	1	71	
Tularemia								
Lyme disease							10	
Lyssavirus infection(excluding rabies)								
Rift valley fever								
Melioidosis								
Legionellosis	2	1	2	3	55	22	814	
Leptospirosis				1	6	1	29	
Rocky mountain spotted fever								

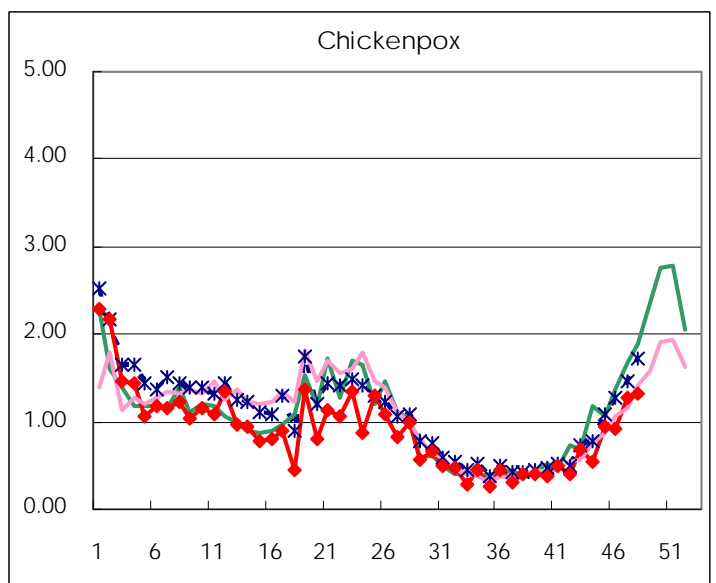
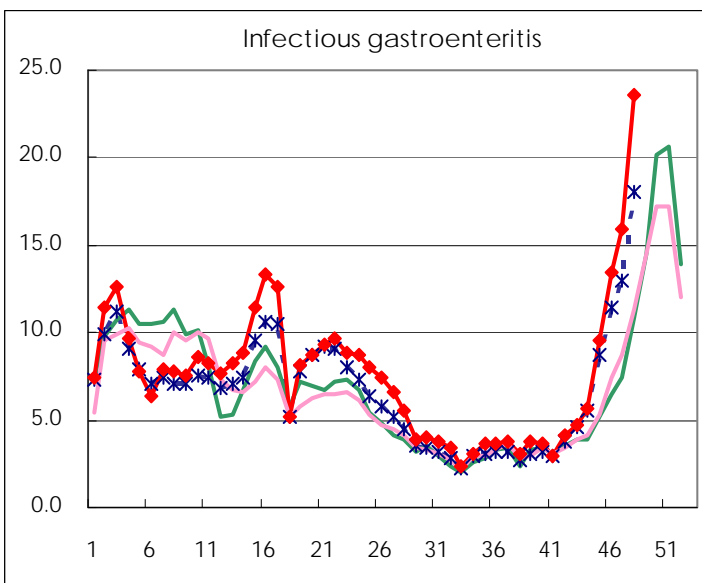
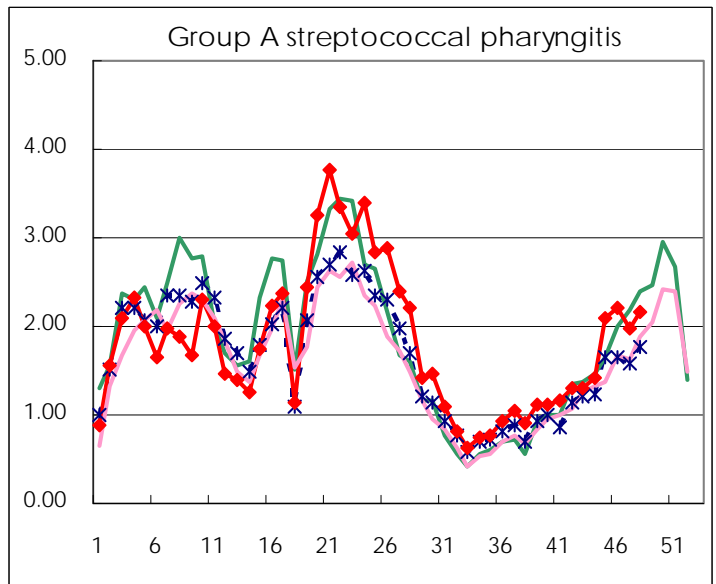
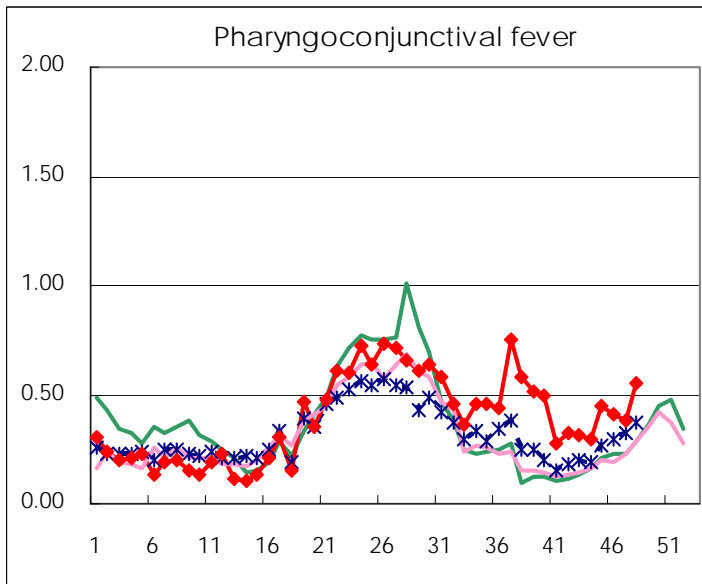
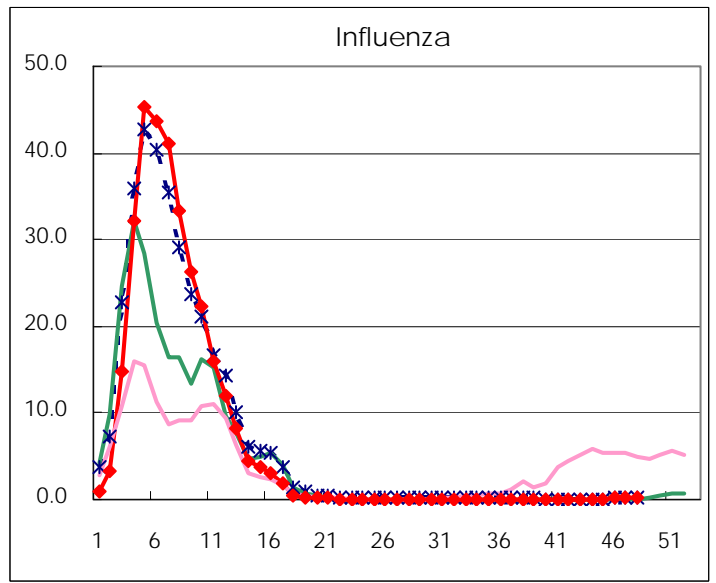
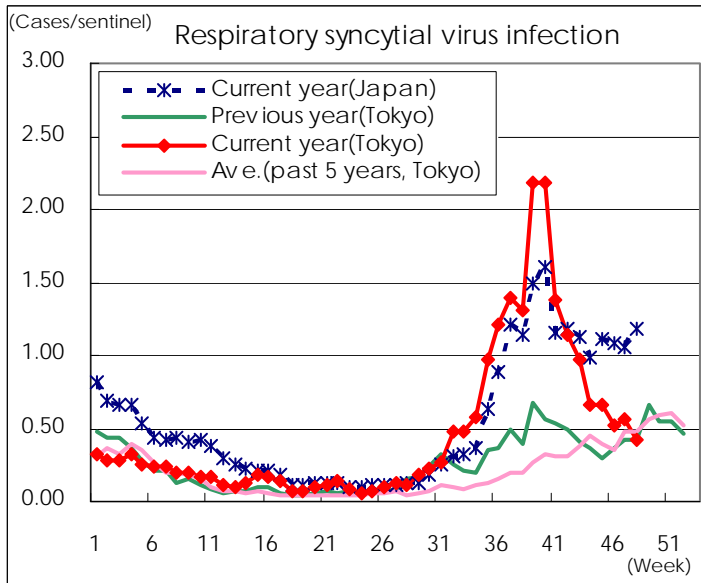
Category	Diseases	Tokyo				Japan		
		45th	46th	47th	48th	Cum 2012	48th	Cum 2012
V	Amebiasis	3	3	2	7	176	18	839
	Viral hepatitis(excluding hepatitis A and E)	1	2	1	1	52	1	205
	Acute encephalitis(excluding JE and WNE)	1			1	30	3	326
	Cryptosporidiosis					2		6
	Creutzfeldt-Jakob disease		1		1	15	3	164
	Severe invasive streptococcal infections(TSLS)	1	1			22	2	229
	Acquired immunodeficiency syndrome (AIDS)	7	8	5	9	422	17	1,287
	Giardiasis	1	1	2		16	1	67
	Meningococcal meningitis							12
	Congenital rubella syndrome							3
	Syphilis	7	7	6	8	268	9	797
	Tetanus			1		5		104
	Vancomycin-resistant S. aureus infection							
	Vancomycin-resistant Enterococcus infection					10	2	85
	Rubella	8	15	17	23	573	34	2,137
	Measles		2	1	3	79	4	284

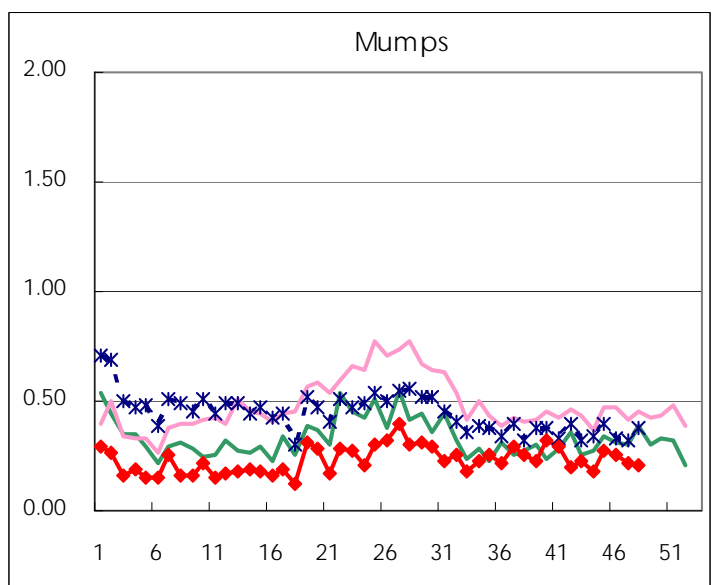
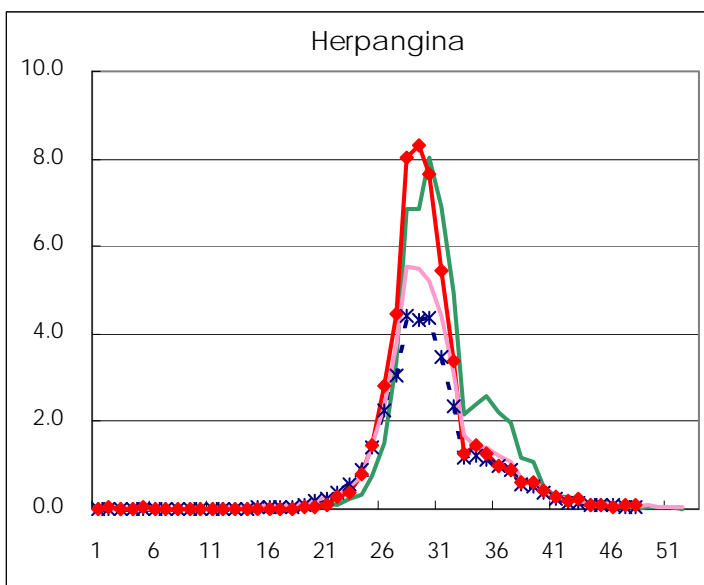
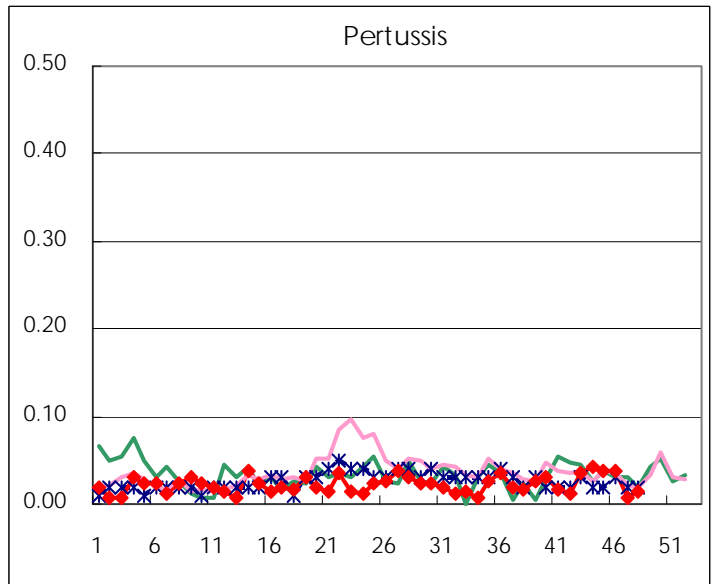
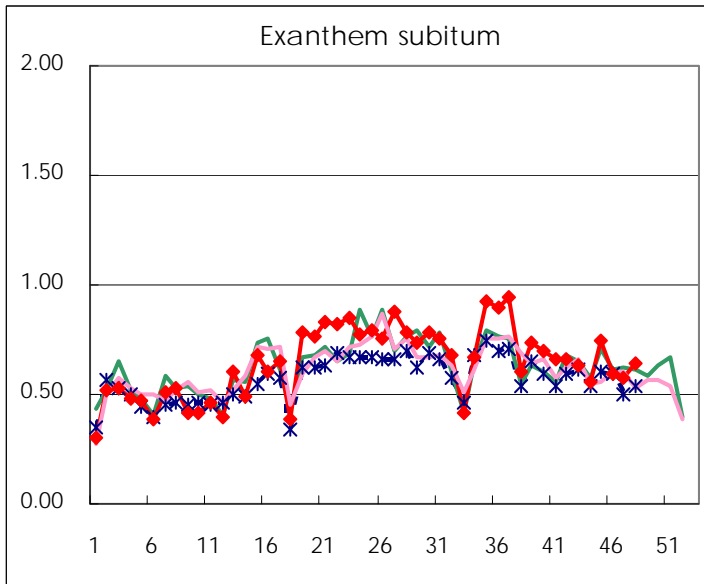
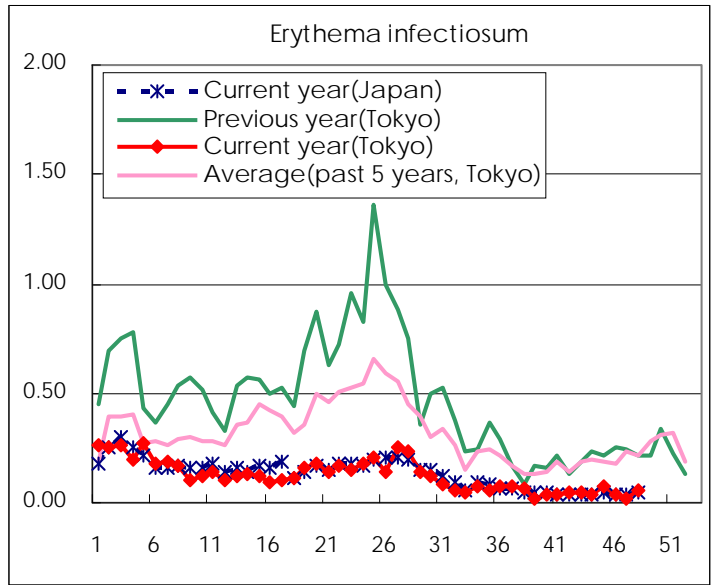
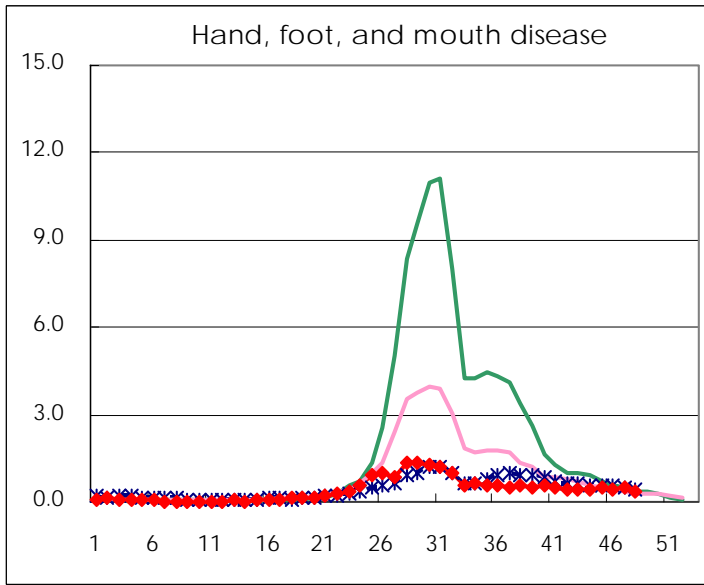
Number of patients with the diseases to be reported  
by the designated clinics and hospitals

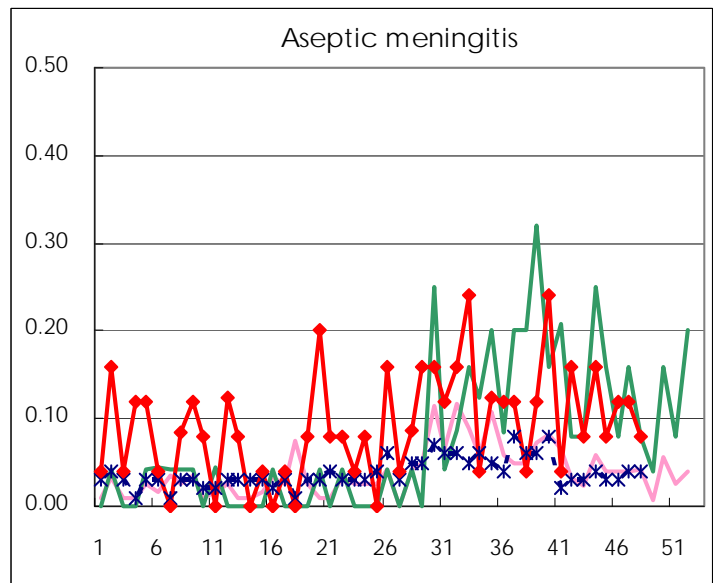
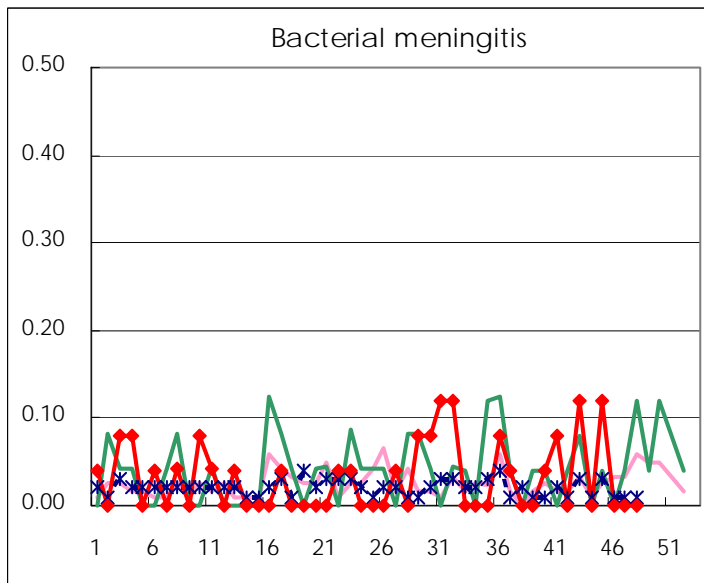
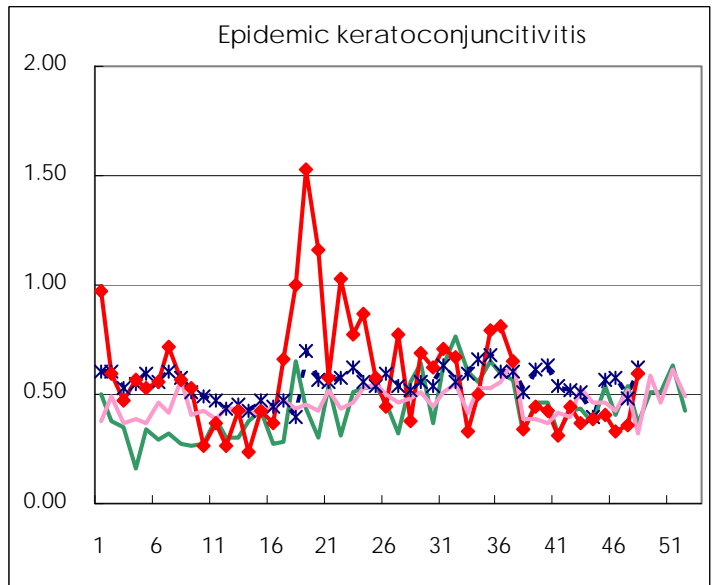
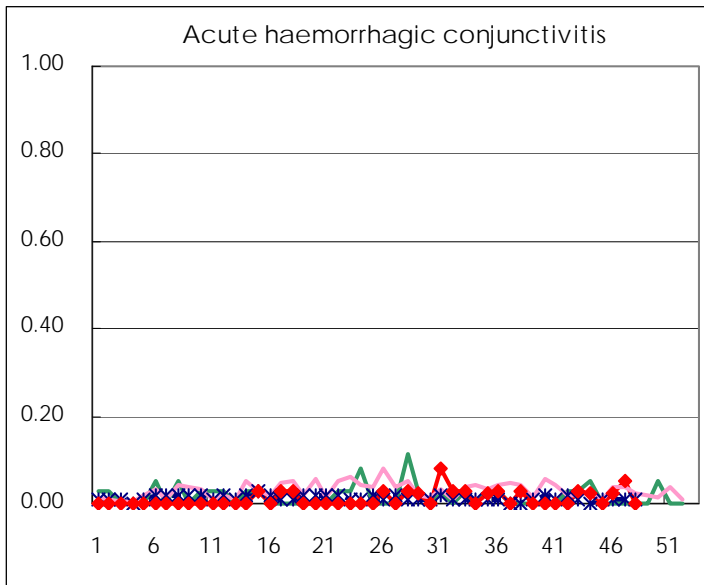
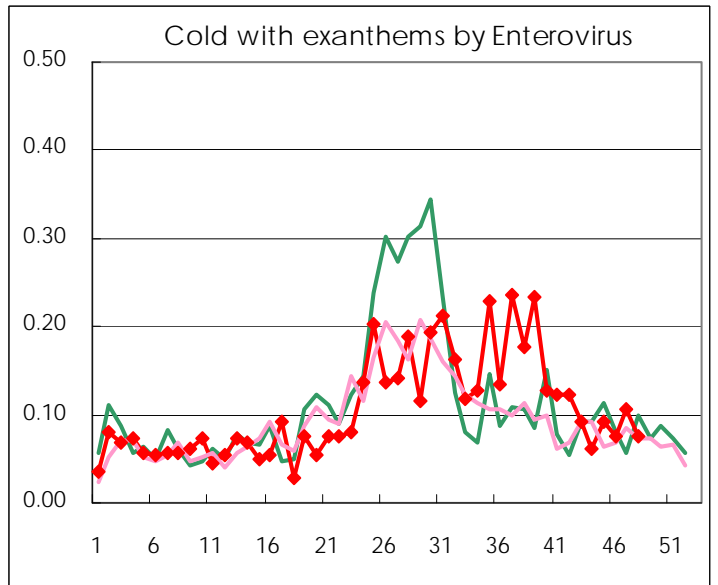
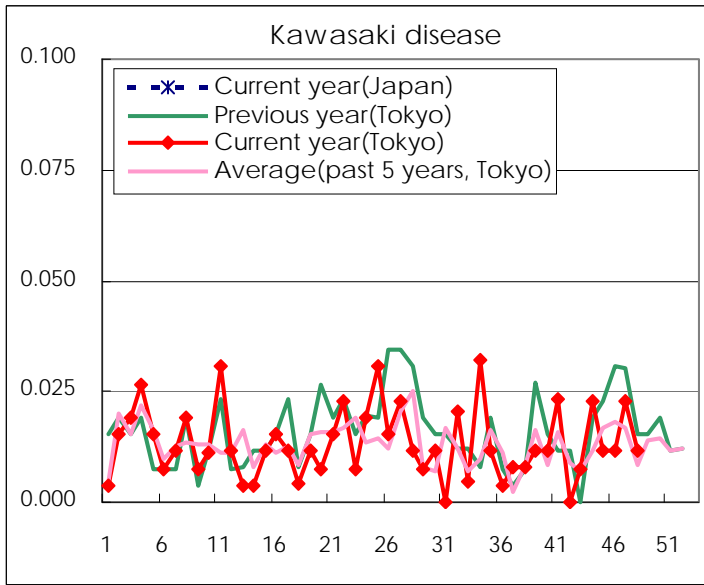
Diseases	Tokyo				
	45th	46th	47th	48th	/sentinel
Respiratory syncytial virus infection	173	135	150	110	0.42
Pharyngoconjunctival fever	115	106	99	144	0.55
Group A streptococcal pharyngitis	544	579	521	564	2.15
Infectious gastroenteritis	2,463	3,508	4,178	6,181	23.59
Chickenpox	242	239	336	343	1.31
Hand, foot, and mouth disease	125	118	124	100	0.38
Erythema infectiosum	19	9	6	15	0.06
Exanthem subitum	193	155	152	167	0.64
Pertussis	10	10	2	4	0.02
Herpangina	26	17	21	20	0.08
Mumps	70	67	56	55	0.21
Kawasaki disease	3	3	6	3	0.01
Cold with exanthems by Enterovirus	24	20	28	20	0.08
Influenza	39	72	100	128	0.31
Acute hemorrhagic conjunctivitis		1	2		
Epidemic keratoconjunctivitis	16	13	14	23	0.59
Bacterial meningitis	3				
Aseptic meningitis	2	3	3	2	0.08
Mycoplasma pneumonia	43	32	18	19	0.76
Chlamydial pneumonia (excluding psittacosis)		1	1		
Influenza-Associated Hospitalizations					

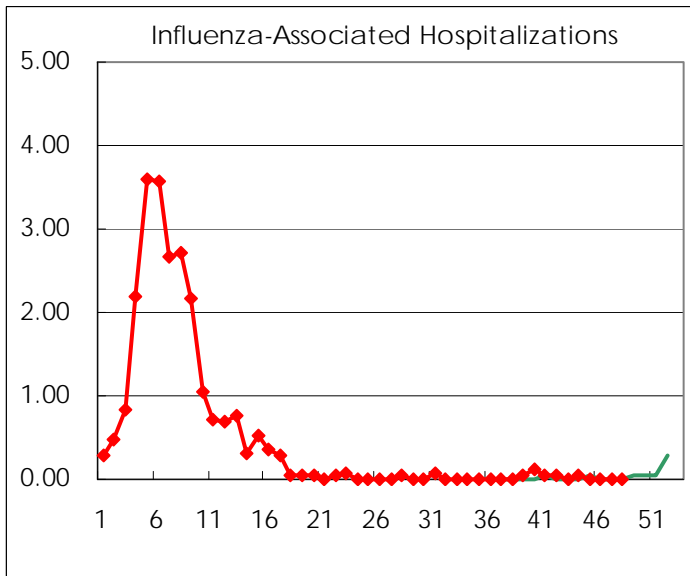
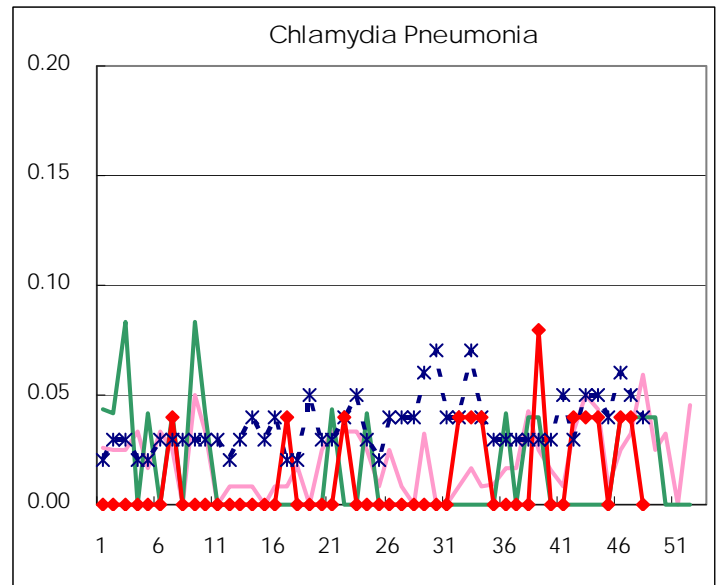
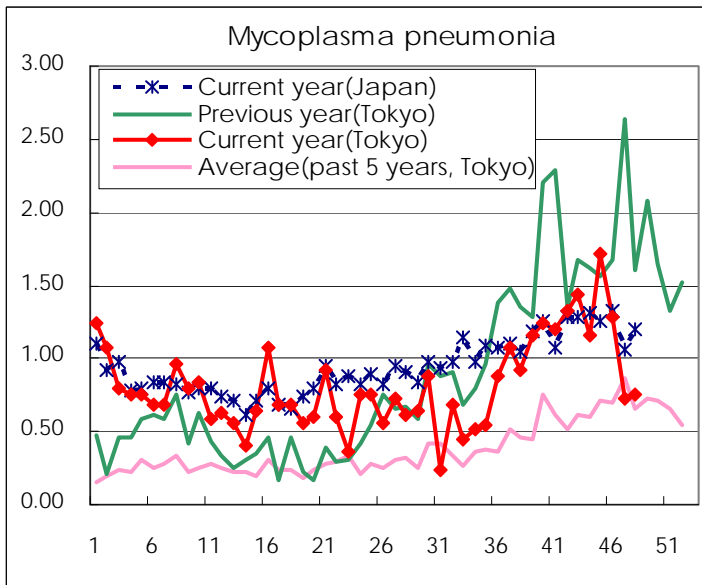
( Blank means 0. )

# Disease Trend Graph (weekly reported cases per sentinel in comparison)









Number of sentinel facilities for weekly reporting		
Types of sentinels	Number of sentinels	Sentinels having reported
Pediatric	264	262
Influenza	419	417
Ophthalmic	39	39
Specially-designated	25	25

**Tokyo Metropolitan Government**  
**Infectious Disease Surveillance Center**