

---

INFECTIOUS DISEASES WEEKLY REPORT

# TOKYO IDWR

Tokyo Metropolitan Infectious Disease Surveillance Center

## 13 December 2012 / Number 49

### Surveillance System in Tokyo, Japan

The infectious diseases which all physicians must report

All physicians must report to health centers the incidence of the diseases which are shown at page one. Health centers electronically report the individual cases to Tokyo Metropolitan Infectious Disease Surveillance Center.

The infectious diseases required to be reported by the sentinels

The numbers of patients who visit the sentinel clinics or hospitals during a week are reported to health centers in Tokyo. And they electronically report the numbers to Tokyo Metropolitan Infectious Disease Surveillance Center. We have about 500 sentinel clinics and hospitals in Tokyo.

1st Week is early January and 52nd Week is end of December.

Tokyo Metropolitan Institute of Public Health

TEL:81-3-3363-3213 FAX:81-3-5332-7365

e-mail:[idsc@tokyo-eiken.go.jp](mailto:idsc@tokyo-eiken.go.jp)

URL:[idsc.tokyo-eiken.go.jp/](http://idsc.tokyo-eiken.go.jp/)

---

## Number of patients with the diseases which all physicians must report

Category	Diseases	Tokyo				Japan		
		46th	47th	48th	49th	Cum 2012	49th	Cum 2012
I	Ebola hemorrhagic fever							
	Crimean-Congo hemorrhagic fever							
	Smallpox							
	South American hemorrhagic fever							
	Plague							
	Marburg disease							
	Lassa fever							
II	Acute poliomyelitis							
	Tuberculosis	96	74	53	69	4,242	303	26,990
	Diphtheria							
	Severe Acute Respiratory Syndrome(SARS)							
	Avian influenza H5N1							
III	Cholera							3
	Shigellosis	1	2	3	1	68	3	204
	Enterohemorrhagic Escherichia coli infection	4	2	2	3	255	25	3,682
	Typhoid fever				3	13	4	35
	Paratyphoid fever					10		20
IV	Hepatitis E	1		2	1	20	2	109
	West Nile fever							
	Hepatitis A	2	1	2		35		157
	Echinococcosis							14
	Yellow fever							
	Psittacosis							6
	Omsk hemorrhagic fever							
	Relapsing fever							
	Kyasanur forest disease							
	Q fever							
	Rabies							
	Coccidioidomycosis					1		2
	Monkeypox							
	Hemorrhagic fever with renal syndrome							
	Western equine encephalitis							
	Tick-borne encephalitis							
	Anthrax							
	Chikungunya fever					3		9
	Scrub typhus(Tsutsugamushi disease)		10		2	16	30	358
	Dengue fever	2			2	55	3	213
	Eastern equine encephalitis							
	Avian influenza (excluding H5N1)							
	Nipah virus infection							
	Japanese spotted fever						2	166
	Japanese encephalitis							2
	Hantavirus pulmonary syndrome							
	Herpes B virus infection							
	Glanders							
	Brucellosis							
	Venezuelan equine encephalitis							
	Hendra virus infection							
Epidemic typhus								
Botulism							3	
Malaria	1	1	1	1	24	1	72	
Tularemia								
Lyme disease						1	11	
Lyssavirus infection(excluding rabies)								
Rift valley fever								
Melioidosis								
Legionellosis	1	2	3	1	56	16	835	
Leptospirosis			1		6		29	
Rocky mountain spotted fever								

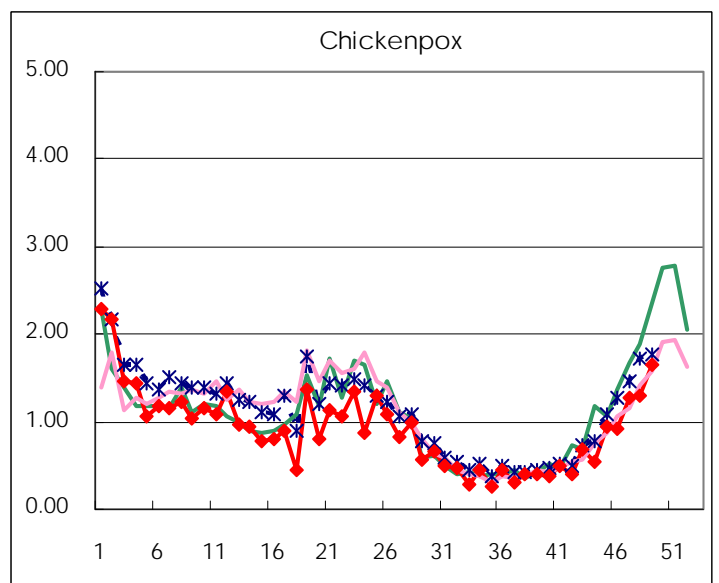
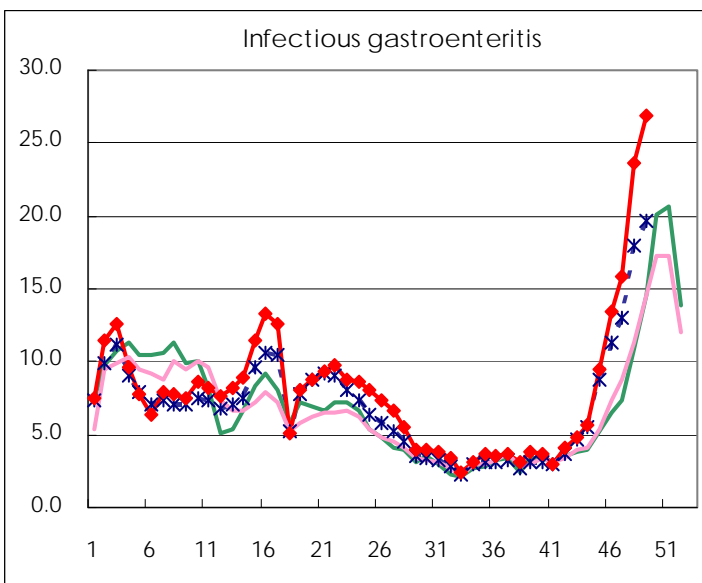
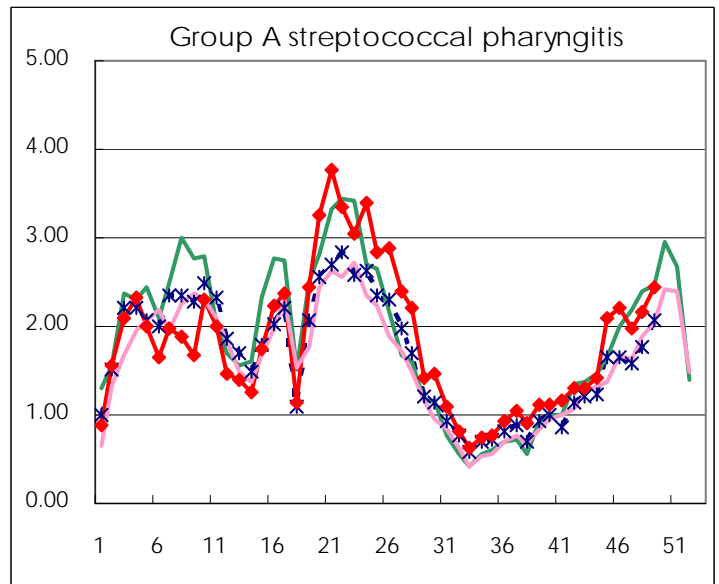
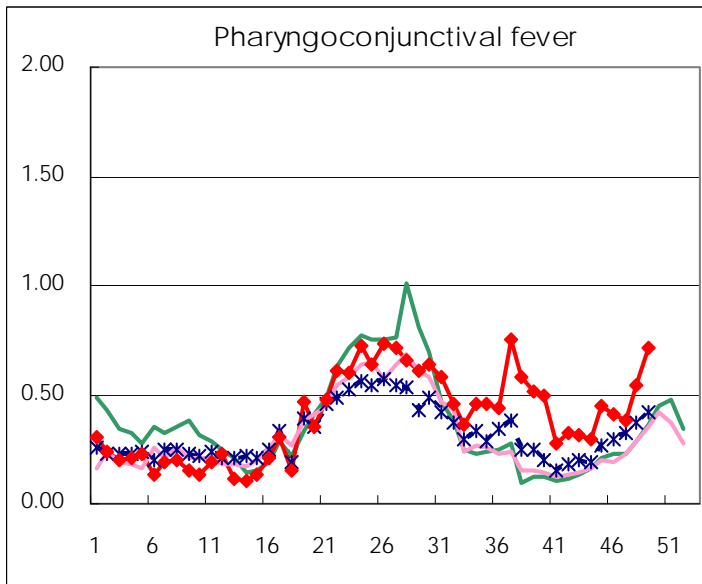
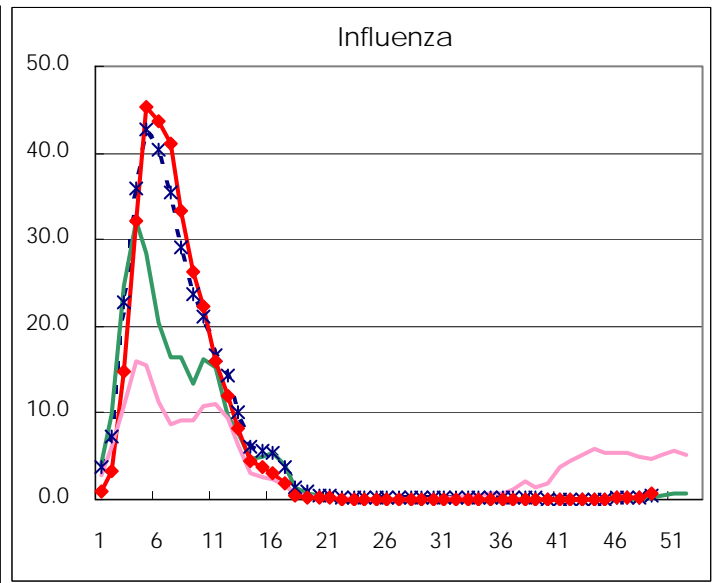
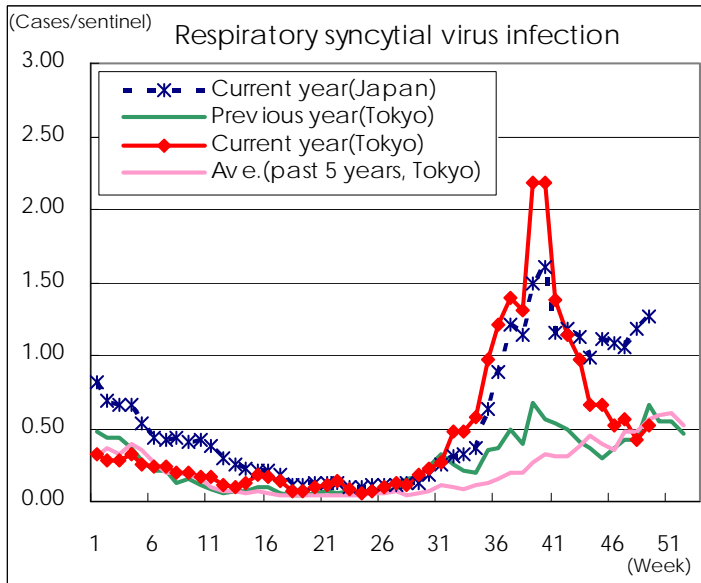
Category	Diseases	Tokyo				Japan		
		46th	47th	48th	49th	Cum 2012	49th	Cum 2012
V	Amebiasis	3	2	7	6	182	11	858
	Viral hepatitis(excluding hepatitis A and E)	2	1	1		52	1	208
	Acute encephalitis(excluding JE and WNE)			1		30	3	331
	Cryptosporidiosis					2		6
	Creutzfeldt-Jakob disease	1		1	1	16	3	170
	Severe invasive streptococcal infections(TSLS)	1				22		229
	Acquired immunodeficiency syndrome (AIDS)	8	5	10	3	426	14	1,317
	Giardiasis	1	2			16		67
	Meningococcal meningitis							12
	Congenital rubella syndrome							3
	Syphilis	7	6	8	5	273	10	818
	Tetanus		1			5	3	109
	Vancomycin-resistant S. aureus infection							
	Vancomycin-resistant Enterococcus infection					10	4	89
	Rubella	15	17	24	22	596	47	2,194
	Measles	2	1	3	2	81	1	286

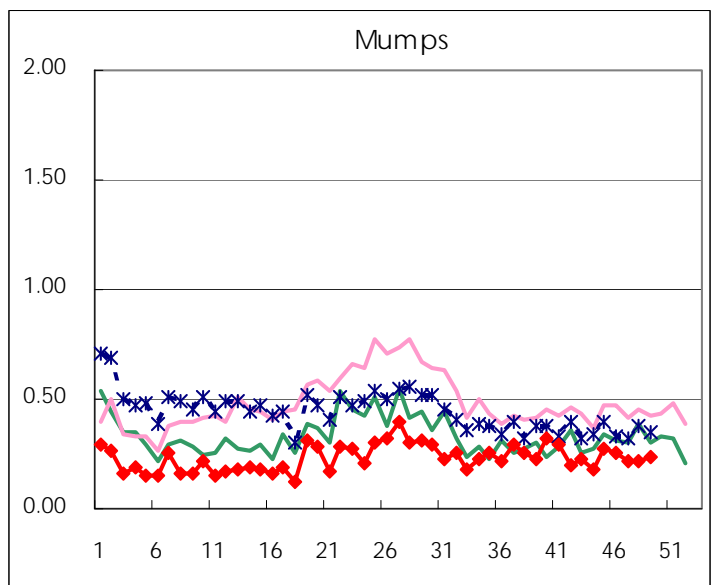
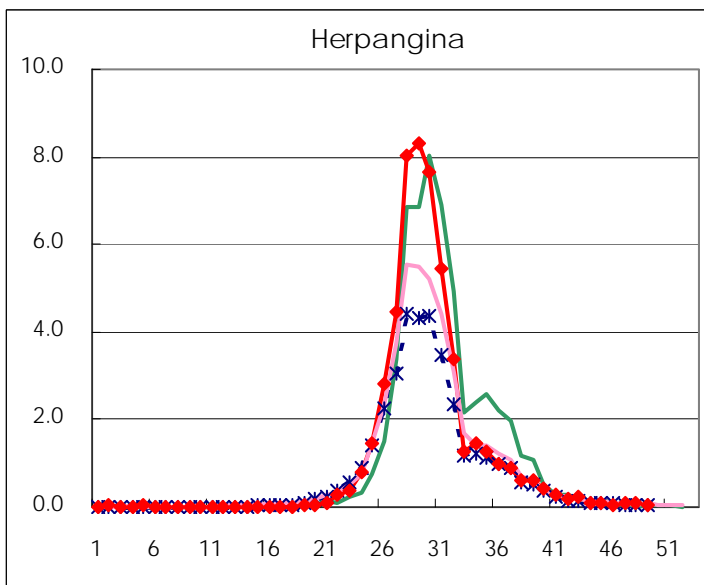
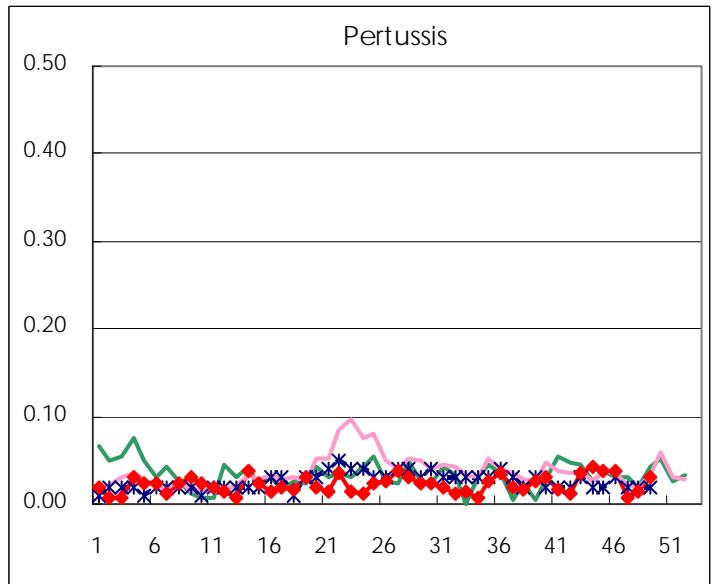
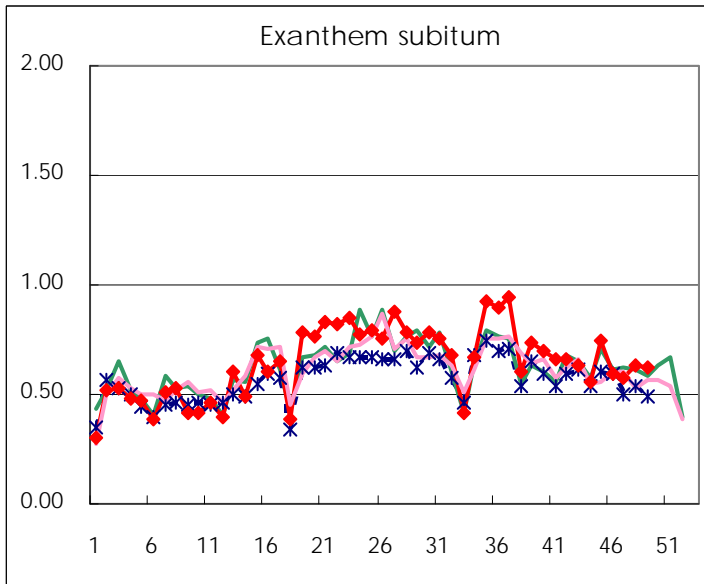
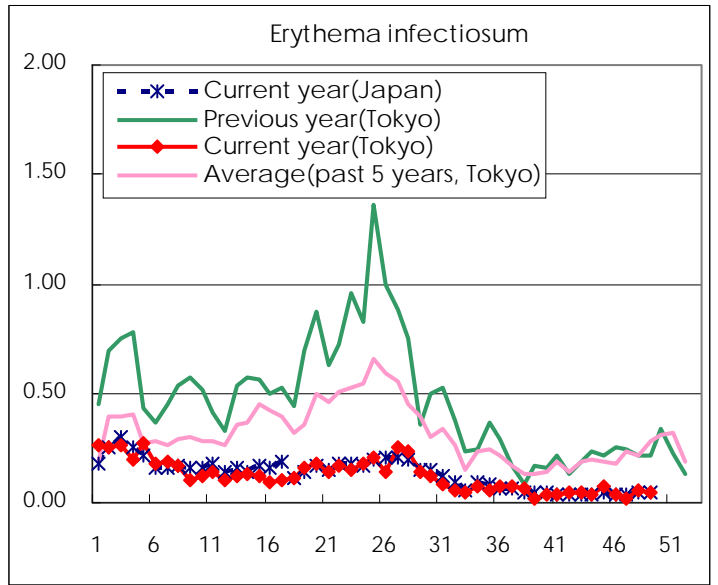
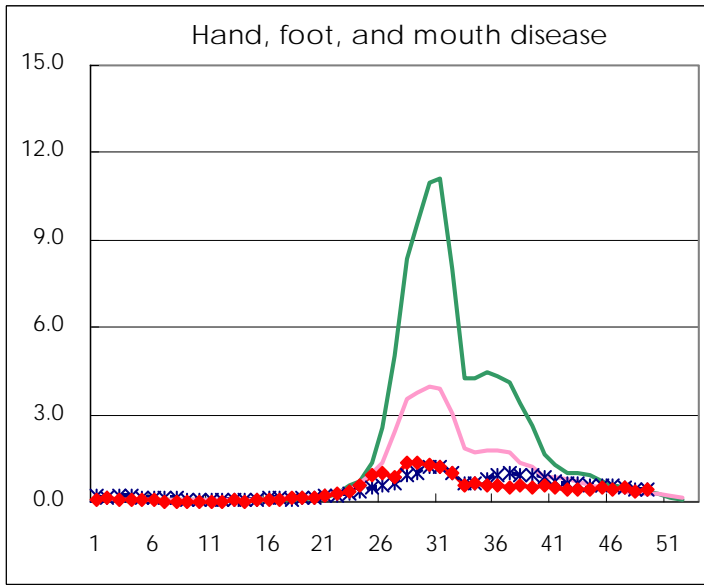
Number of patients with the diseases to be reported  
by the designated clinics and hospitals

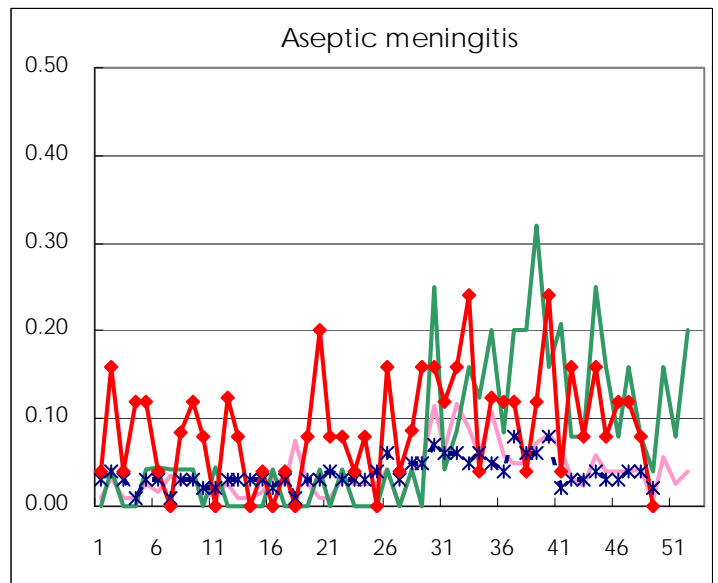
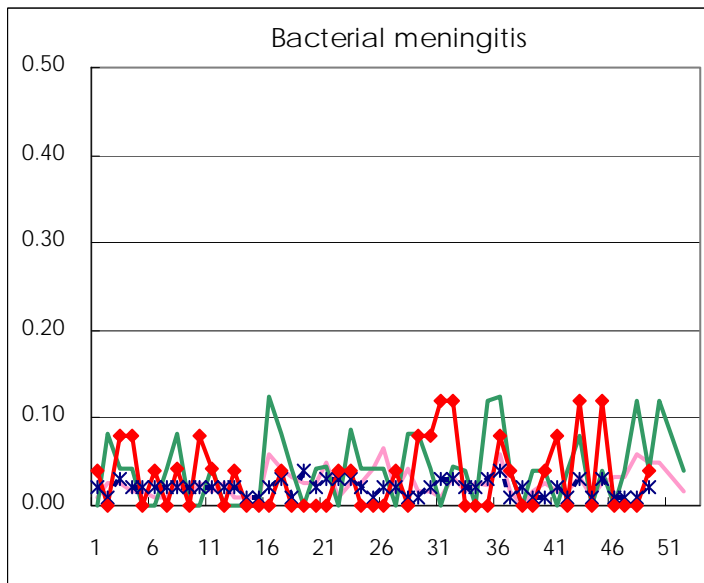
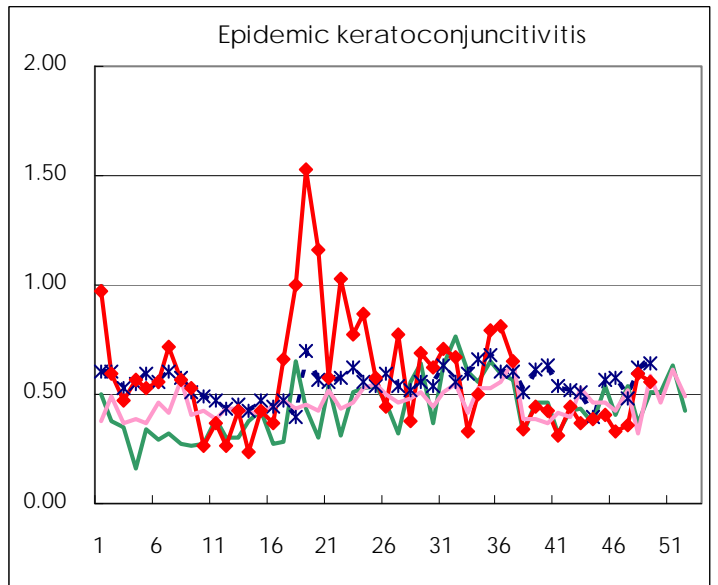
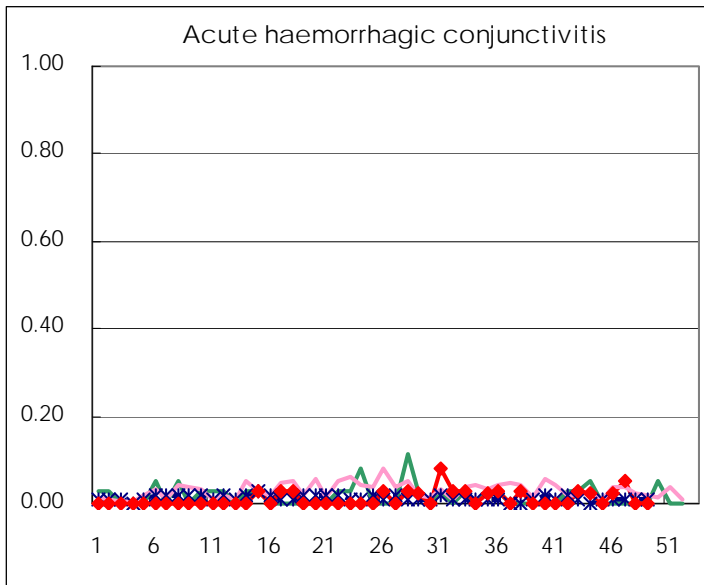
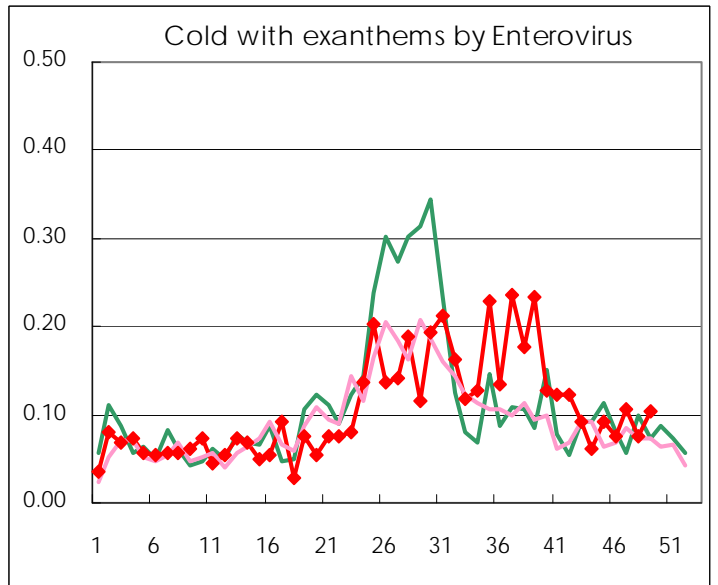
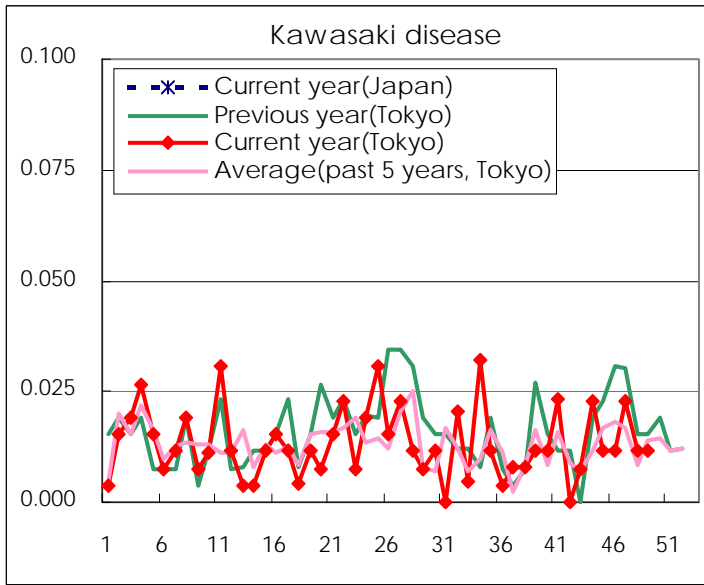
Diseases	Tokyo				
	46th	47th	48th	49th	/sentinel
Respiratory syncytial virus infection	135	150	110	138	0.53
Pharyngoconjunctival fever	106	99	144	186	0.71
Group A streptococcal pharyngitis	579	521	566	641	2.45
Infectious gastroenteritis	3,508	4,178	6,210	7,061	26.95
Chickenpox	239	336	343	431	1.65
Hand, foot, and mouth disease	118	124	100	110	0.42
Erythema infectiosum	9	6	15	12	0.05
Exanthem subitum	155	152	167	162	0.62
Pertussis	10	2	4	8	0.03
Herpangina	17	21	20	16	0.06
Mumps	67	56	56	61	0.23
Kawasaki disease	3	6	3	3	0.01
Cold with exanths by Enterovirus	20	28	20	27	0.10
Influenza	72	100	128	261	0.63
Acute hemorrhagic conjunctivitis	1	2			
Epidemic keratoconjunctivitis	13	14	23	21	0.55
Bacterial meningitis				1	0.04
Aseptic meningitis	3	3	2		
Mycoplasma pneumonia	32	18	19	29	1.16
Chlamydial pneumonia (excluding psittacosis)	1	1			
Influenza-Associated Hospitalizations				2	0.08

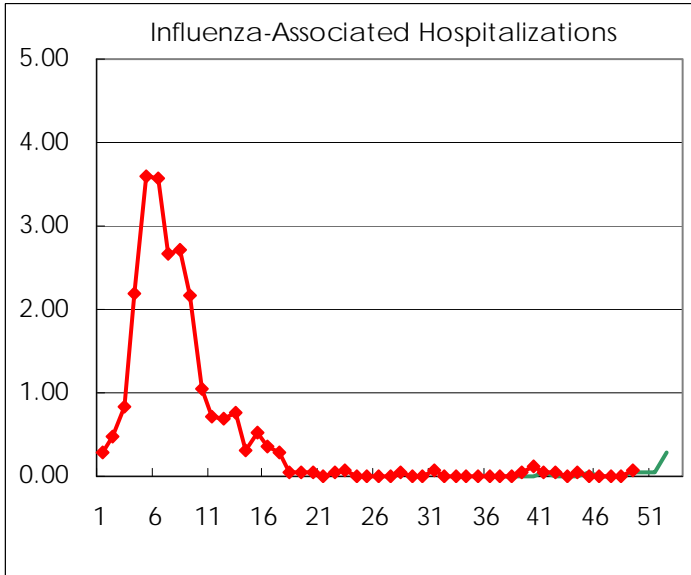
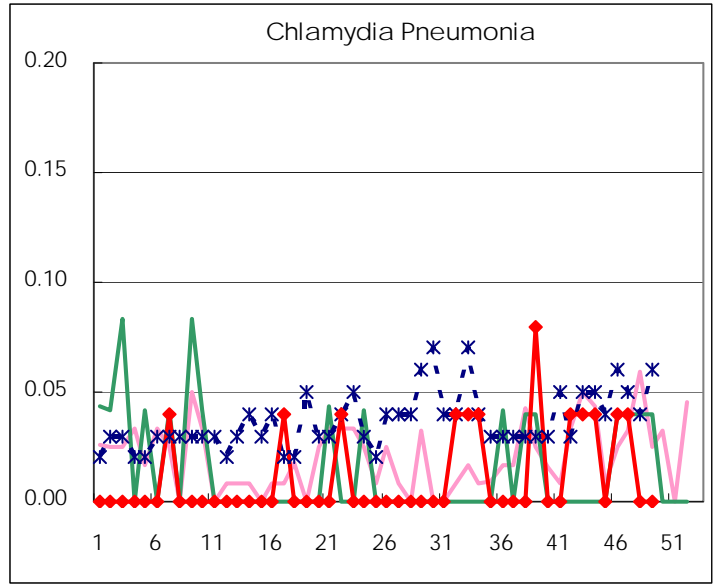
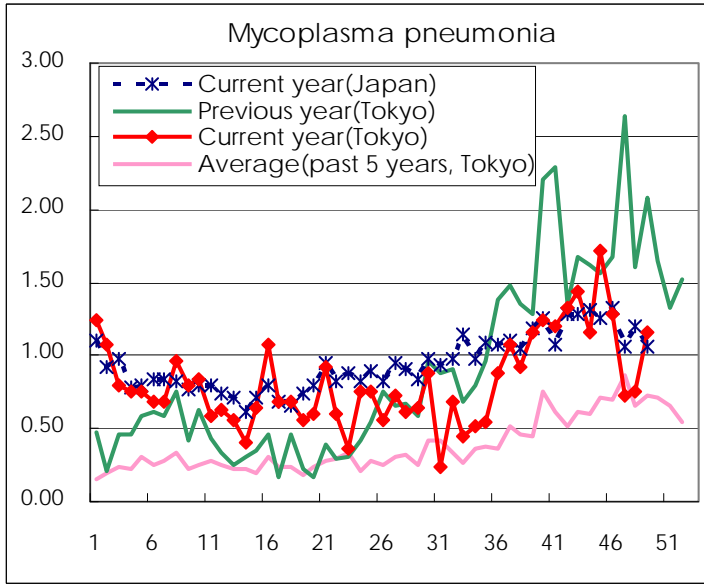
( Blank means 0. )

# Disease Trend Graph (weekly reported cases per sentinel in comparison)









Number of sentinel facilities for weekly reporting		
Types of sentinels	Number of sentinels	Sentinels having reported
Pediatric	264	262
Influenza	419	417
Ophthalmic	39	38
Specially-designated	25	25

Tokyo Metropolitan Government  
Infectious Disease Surveillance Center