

---

INFECTIOUS DISEASES WEEKLY REPORT

# TOKYO IDWR

Tokyo Metropolitan Infectious Disease Surveillance Center

## 20 December 2012 / Number 50

### Surveillance System in Tokyo, Japan

The infectious diseases which all physicians must report

All physicians must report to health centers the incidence of the diseases which are shown at page one. Health centers electronically report the individual cases to Tokyo Metropolitan Infectious Disease Surveillance Center.

The infectious diseases required to be reported by the sentinels

The numbers of patients who visit the sentinel clinics or hospitals during a week are reported to health centers in Tokyo. And they electronically report the numbers to Tokyo Metropolitan Infectious Disease Surveillance Center. We have about 500 sentinel clinics and hospitals in Tokyo.

1st Week is early January and 52nd Week is end of December.

Tokyo Metropolitan Institute of Public Health

TEL:81-3-3363-3213 FAX:81-3-5332-7365

e-mail:[idsc@tokyo-eiken.go.jp](mailto:idsc@tokyo-eiken.go.jp)

URL:[idsc.tokyo-eiken.go.jp/](http://idsc.tokyo-eiken.go.jp/)

---

## Number of patients with the diseases which all physicians must report

Category	Diseases	Tokyo				Japan		
		47th	48th	49th	50th	Cum 2012	50th	Cum 2012
I	Ebola hemorrhagic fever							
	Crimean-Congo hemorrhagic fever							
	Smallpox							
	South American hemorrhagic fever							
	Plague							
	Marburg disease							
	Lassa fever							
II	Acute poliomyelitis							
	Tuberculosis	74	60	78	79	4,331	348	27,552
	Diphtheria							
	Severe Acute Respiratory Syndrome(SARS)							
	Avian influenza H5N1							
III	Cholera							3
	Shigellosis	2	3	1	4	72	3	208
	Enterohemorrhagic Escherichia coli infection	2	2	3	1	256	18	3,707
	Typhoid fever			3		13		35
	Paratyphoid fever					10		20
IV	Hepatitis E		2	1		20	1	111
	West Nile fever							
	Hepatitis A	1	2			35		157
	Echinococcosis							14
	Yellow fever							
	Psittacosis							6
	Omsk hemorrhagic fever							
	Relapsing fever							
	Kyasanur forest disease							
	Q fever						1	1
	Rabies							
	Coccidioidomycosis					1		2
	Monkeypox							
	Hemorrhagic fever with renal syndrome							
	Western equine encephalitis							
	Tick-borne encephalitis							
	Anthrax							
	Chikungunya fever					3		9
	Scrub typhus(Tsutsugamushi disease)	10		2		16	21	387
	Dengue fever			2	1	56	1	215
	Eastern equine encephalitis							
	Avian influenza (excluding H5N1)							
	Nipah virus infection							
	Japanese spotted fever						1	167
	Japanese encephalitis							2
	Hantavirus pulmonary syndrome							
	Herpes B virus infection							
	Glanders							
	Brucellosis							
	Venezuelan equine encephalitis							
	Hendra virus infection							
Epidemic typhus								
Botulism							3	
Malaria	1	1	1		24		72	
Tularemia								
Lyme disease							11	
Lyssavirus infection(excluding rabies)								
Rift valley fever								
Melioidosis								
Legionellosis	2	3	1		56	19	855	
Leptospirosis		1			6	1	30	
Rocky mountain spotted fever								

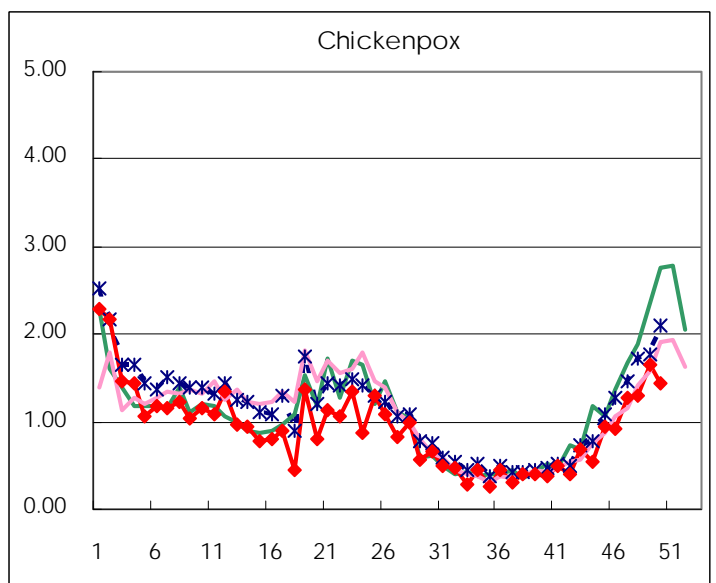
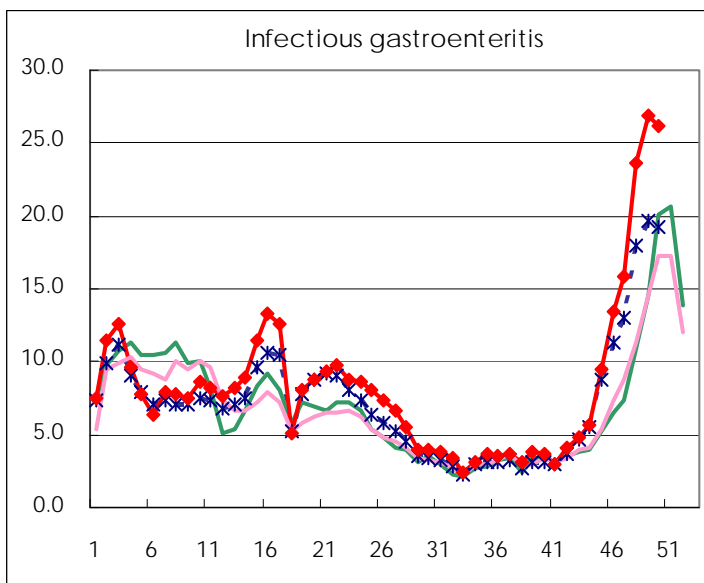
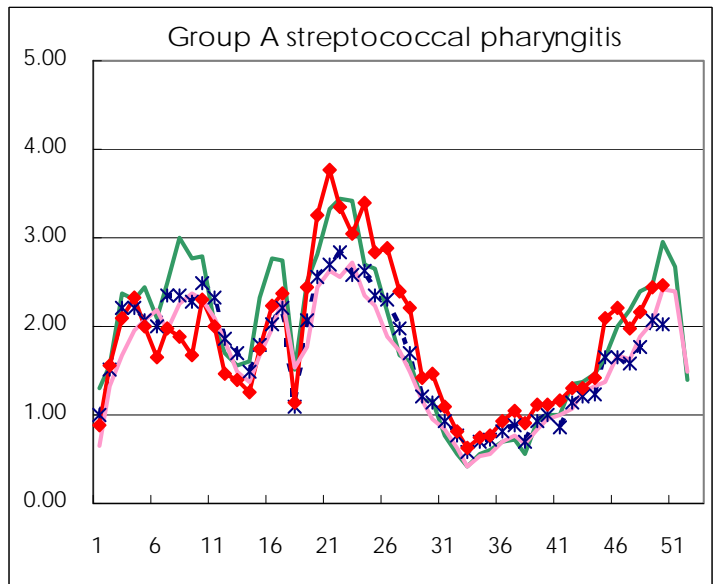
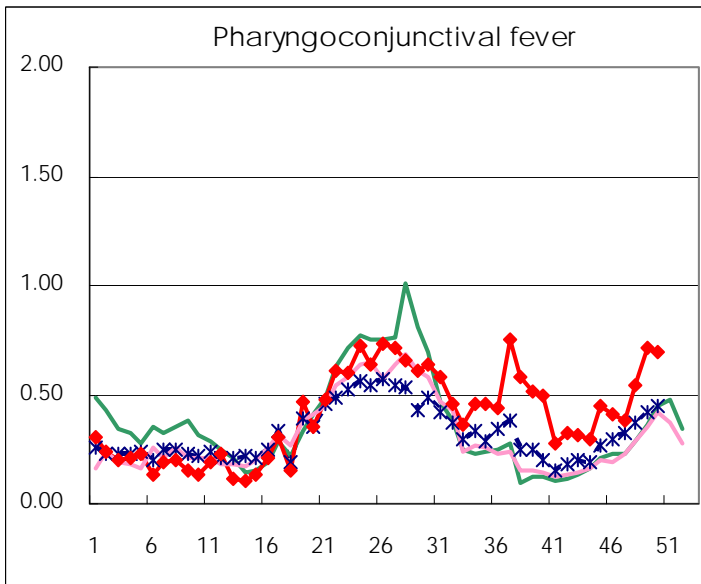
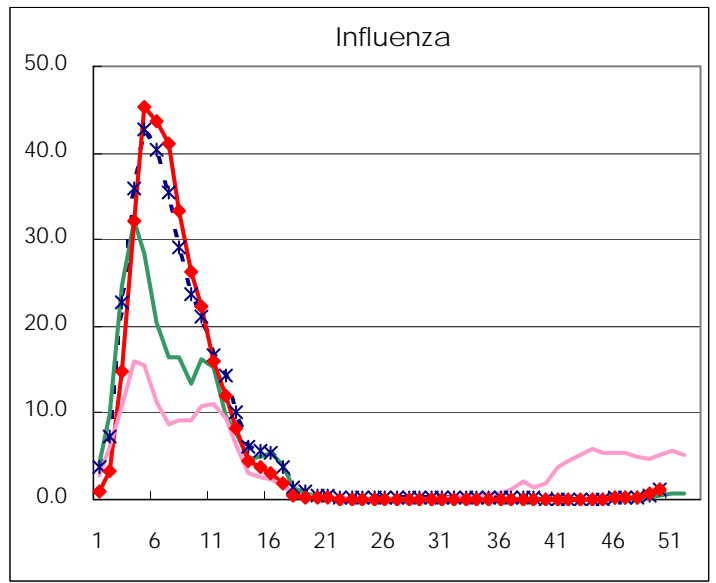
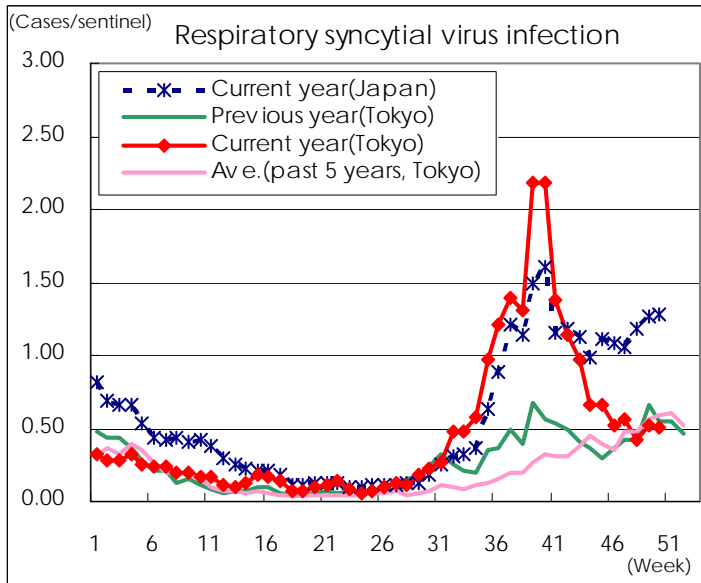
Category	Diseases	Tokyo				Japan		
		47th	48th	49th	50th	Cum 2012	50th	Cum 2012
V	Amebiasis	2	7	6	4	186	14	878
	Viral hepatitis(excluding hepatitis A and E)	1	1		3	55	5	216
	Acute encephalitis(excluding JE and WNE)		1		2	32	2	338
	Cryptosporidiosis					2		6
	Creutzfeldt-Jakob disease		1	1		16	3	175
	Severe invasive streptococcal infections(TSLS)				1	23	3	234
	Acquired immunodeficiency syndrome (AIDS)	5	10	3	17	443	18	1,347
	Giardiasis	2				16		67
	Meningococcal meningitis							12
	Congenital rubella syndrome							4
	Syphilis	6	8	5	11	284	13	833
	Tetanus	1				5		110
	Vancomycin-resistant S. aureus infection							
	Vancomycin-resistant Enterococcus infection					10		89
	Rubella	17	24	22	22	618	25	2,231
	Measles	1	2	2	1	81	6	289

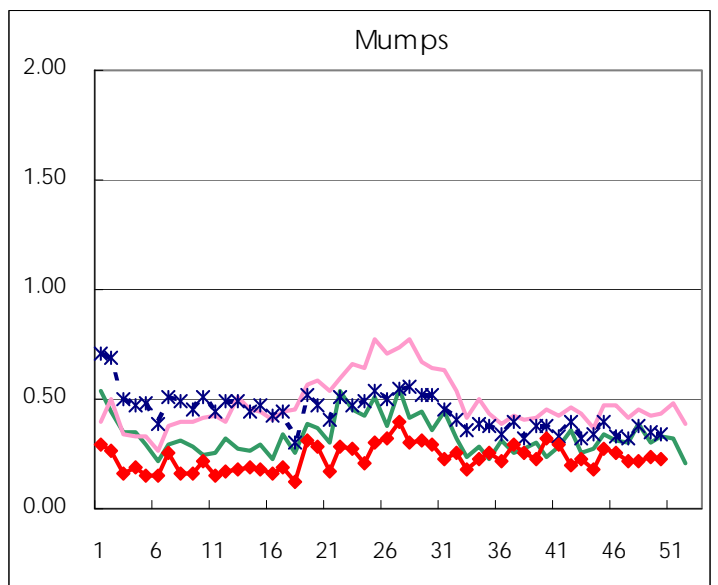
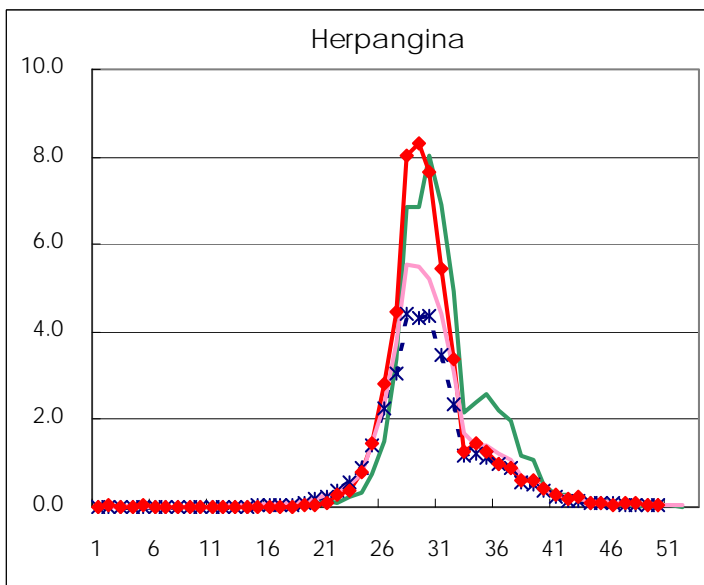
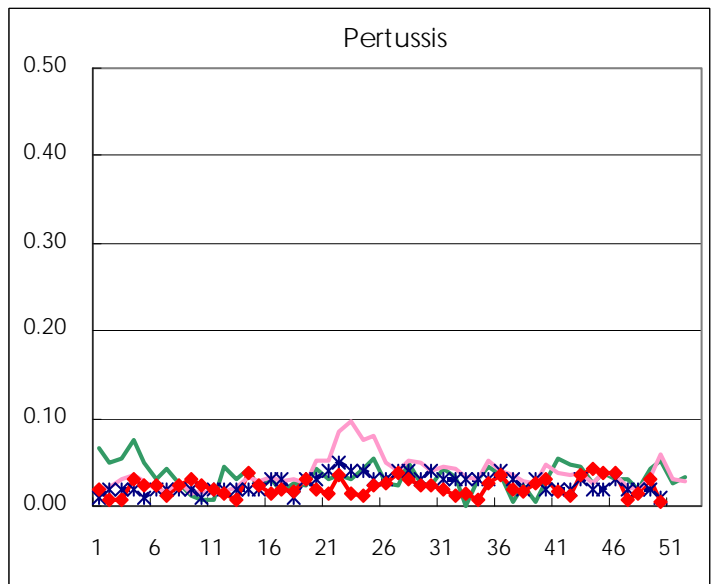
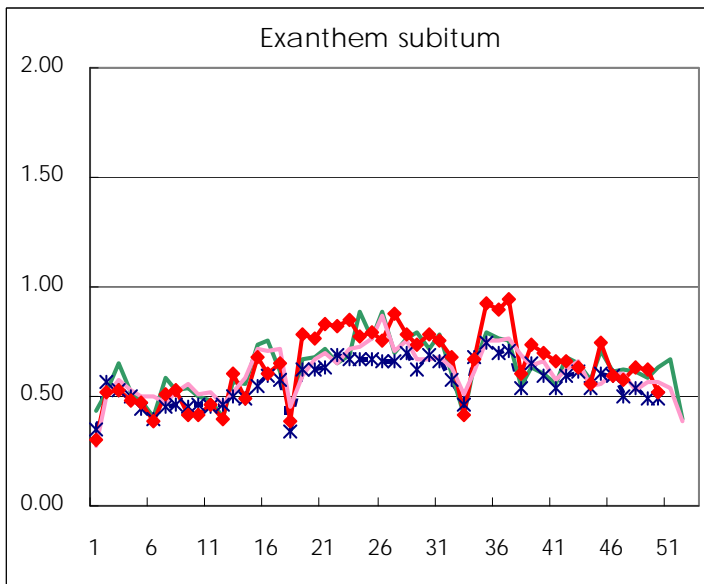
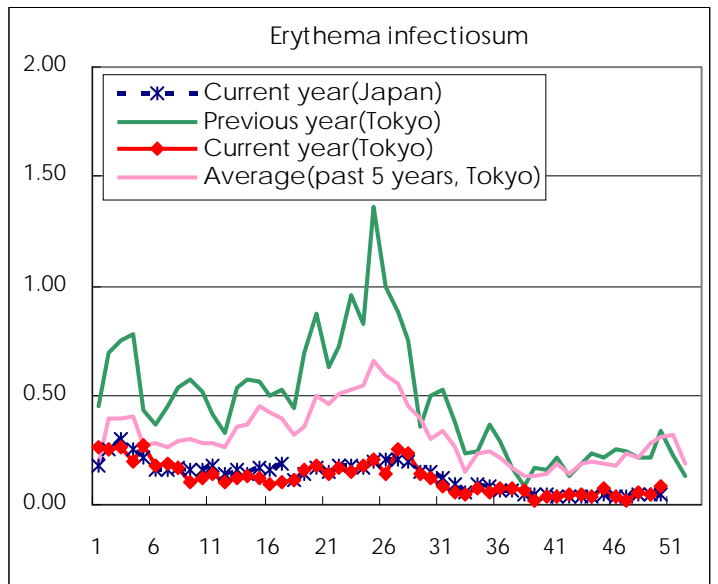
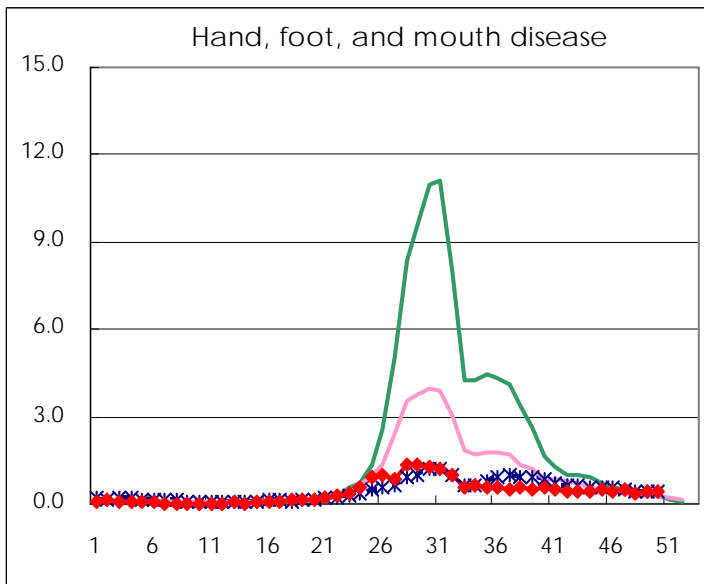
Number of patients with the diseases to be reported  
by the designated clinics and hospitals

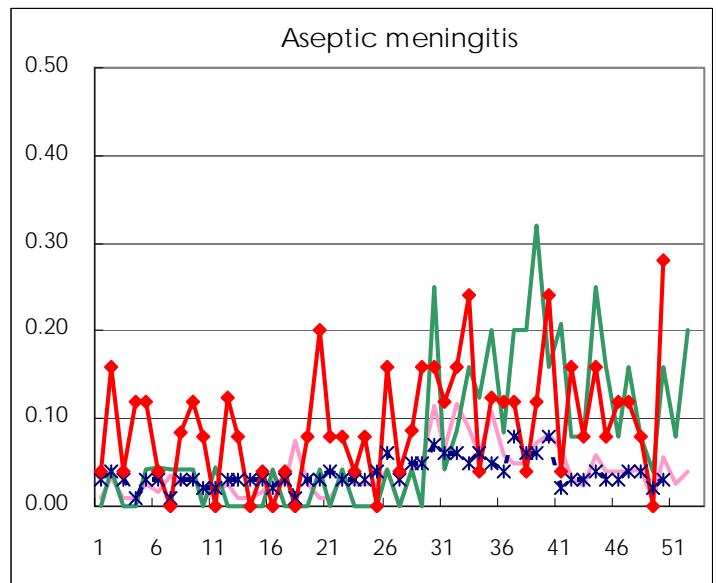
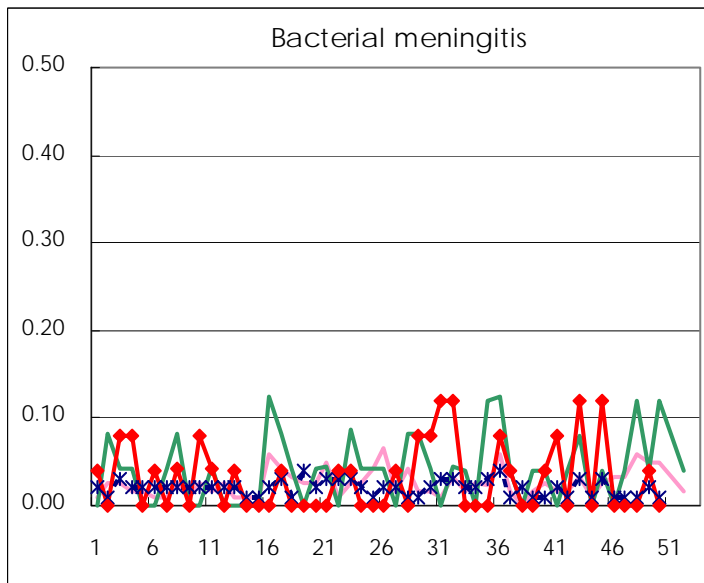
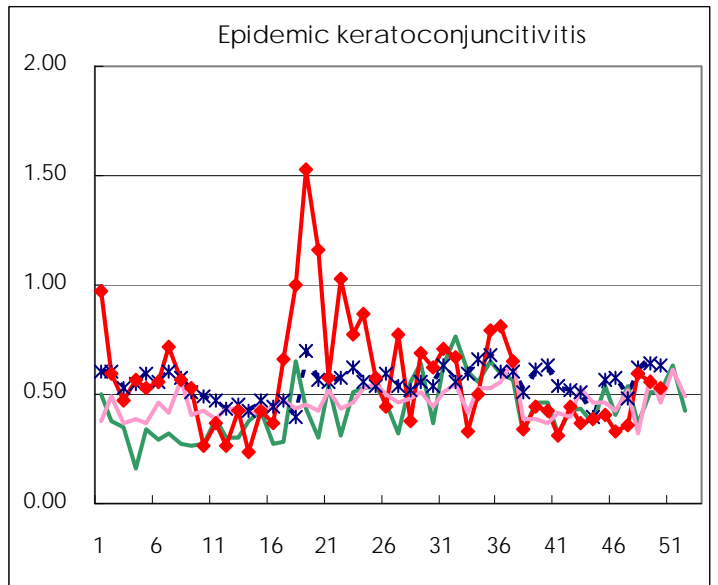
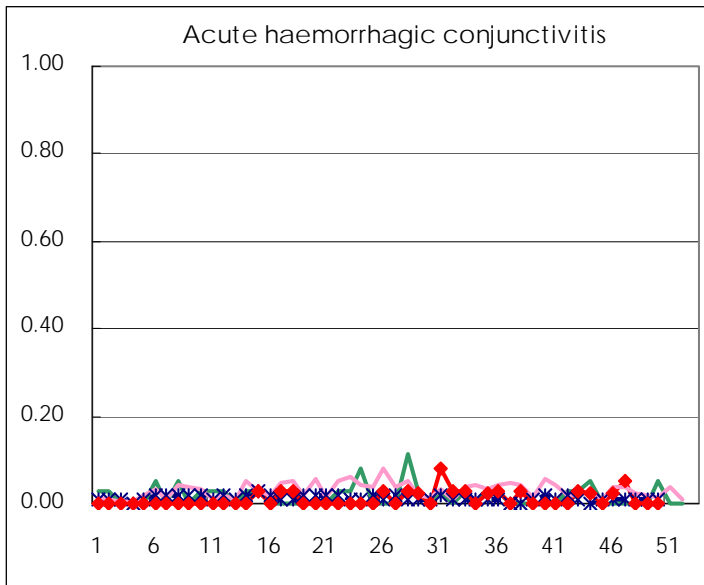
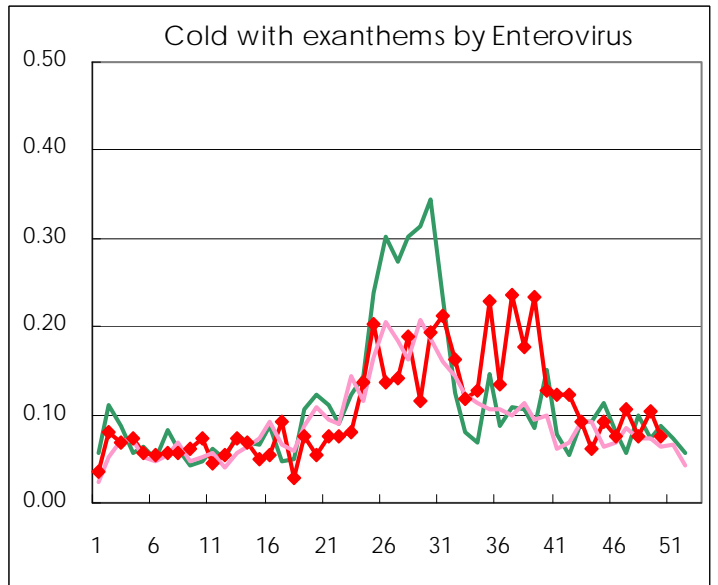
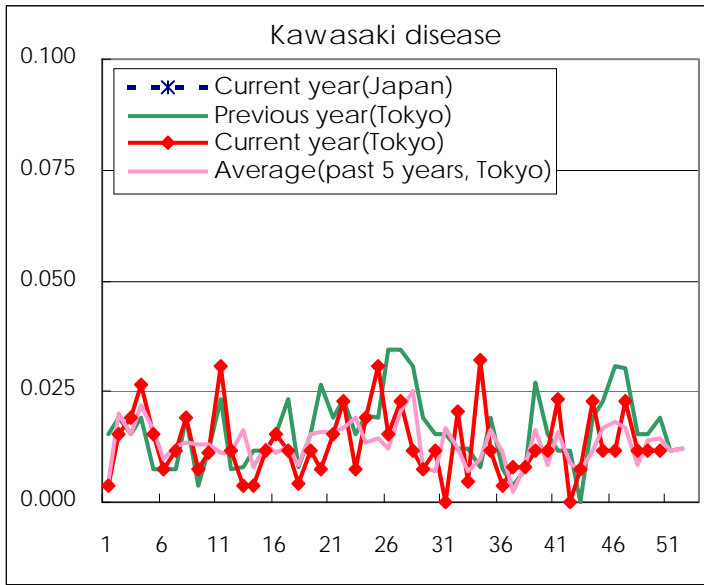
Diseases	Tokyo				
	47th	48th	49th	50th	/sentinel
Respiratory syncytial virus infection	150	110	138	135	0.51
Pharyngoconjunctival fever	99	144	186	184	0.70
Group A streptococcal pharyngitis	521	566	641	646	2.46
Infectious gastroenteritis	4,178	6,210	7,061	6,873	26.13
Chickenpox	336	343	431	381	1.45
Hand, foot, and mouth disease	124	100	110	107	0.41
Erythema infectiosum	6	15	12	22	0.08
Exanthem subitum	152	167	162	136	0.52
Pertussis	2	4	8	1	0.00
Herpangina	21	20	16	16	0.06
Mumps	56	56	61	59	0.22
Kawasaki disease	6	3	3	3	0.01
Cold with exanthems by Enterovirus	28	20	27	20	0.08
Influenza	100	128	261	467	1.12
Acute hemorrhagic conjunctivitis	2				
Epidemic keratoconjunctivitis	14	23	21	20	0.53
Bacterial meningitis			1		
Aseptic meningitis	3	2		7	0.28
Mycoplasma pneumonia	18	19	29	22	0.88
Chlamydial pneumonia (excluding psittacosis)	1			1	0.04
Influenza-Associated Hospitalizations			2	1	0.04

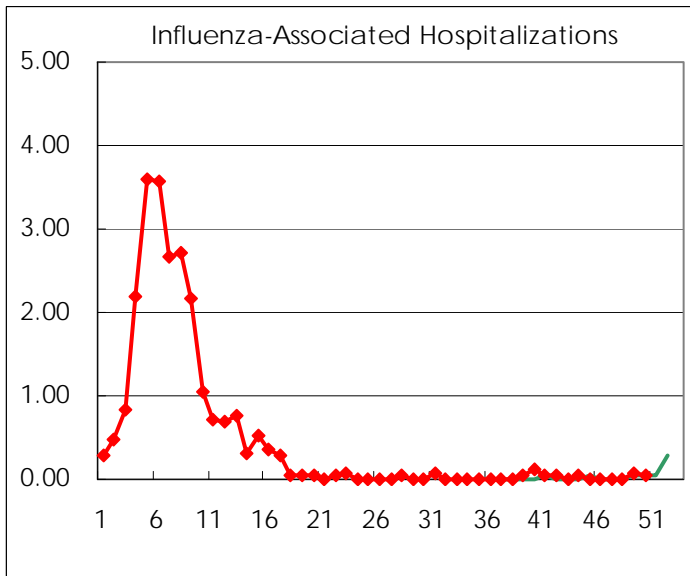
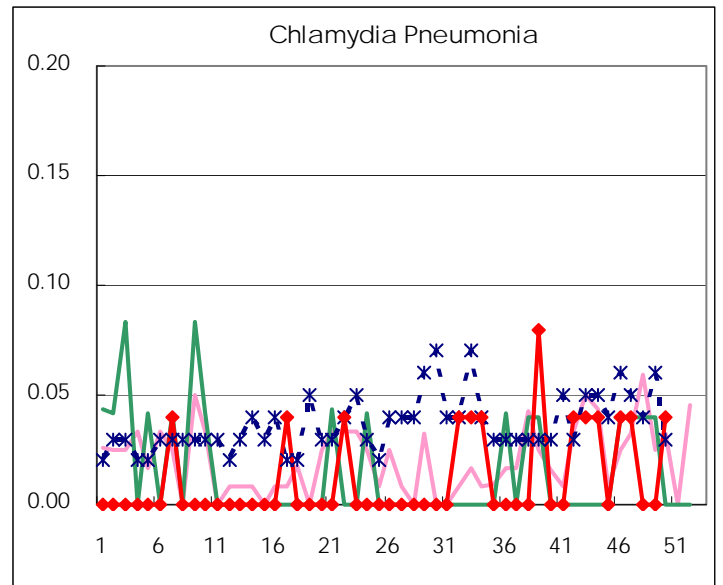
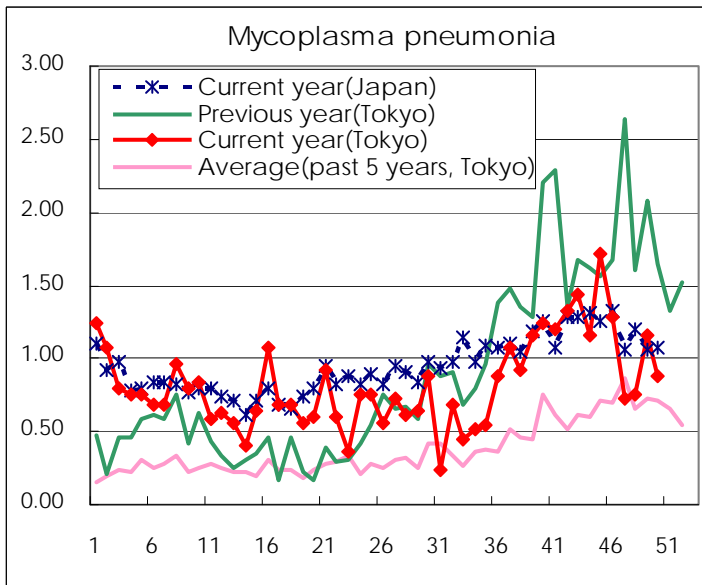
( Blank means 0. )

# Disease Trend Graph (weekly reported cases per sentinel in comparison)









Number of sentinel facilities for weekly reporting		
Types of sentinels	Number of sentinels	Sentinels having reported
Pediatric	264	263
Influenza	419	418
Ophthalmic	39	38
Specially-designated	25	25

Tokyo Metropolitan Government  
Infectious Disease Surveillance Center