

---

INFECTIOUS DISEASES WEEKLY REPORT

# TOKYO IDWR

Tokyo Metropolitan Infectious Disease Surveillance Center

## 27 December 2012 / Number 51

### Surveillance System in Tokyo, Japan

The infectious diseases which all physicians must report

All physicians must report to health centers the incidence of the diseases which are shown at page one. Health centers electronically report the individual cases to Tokyo Metropolitan Infectious Disease Surveillance Center.

The infectious diseases required to be reported by the sentinels

The numbers of patients who visit the sentinel clinics or hospitals during a week are reported to health centers in Tokyo. And they electronically report the numbers to Tokyo Metropolitan Infectious Disease Surveillance Center. We have about 500 sentinel clinics and hospitals in Tokyo.

1st Week is early January and 52nd Week is end of December.

Tokyo Metropolitan Institute of Public Health

TEL:81-3-3363-3213 FAX:81-3-5332-7365

e-mail:[idsc@tokyo-eiken.go.jp](mailto:idsc@tokyo-eiken.go.jp)

URL:[idsc.tokyo-eiken.go.jp/](http://idsc.tokyo-eiken.go.jp/)

---

## Number of patients with the diseases which all physicians must report

Category	Diseases	Tokyo				Japan		
		48th	49th	50th	51st	Cum 2012	51st	Cum 2012
I	Ebola hemorrhagic fever							
	Crimean-Congo hemorrhagic fever							
	Smallpox							
	South American hemorrhagic fever							
	Plague							
	Marburg disease							
	Lassa fever							
II	Acute poliomyelitis							
	Tuberculosis	64	80	92	80	4,434	356	28,047
	Diphtheria							
	Severe Acute Respiratory Syndrome(SARS)							
	Avian influenza H5N1							
III	Cholera							3
	Shigellosis	3	1	4	2	74	2	210
	Enterohemorrhagic Escherichia coli infection	2	3	1	1	257	14	3,724
	Typhoid fever		3			13		35
	Paratyphoid fever					10	1	21
IV	Hepatitis E	2	1		1	21	1	113
	West Nile fever							
	Hepatitis A	2				35		157
	Echinococcosis				1	1		15
	Yellow fever							
	Psittacosis							6
	Omsk hemorrhagic fever							
	Relapsing fever				1	1	1	1
	Kyasanur forest disease							
	Q fever							1
	Rabies							
	Coccidioidomycosis					1		2
	Monkeypox							
	Hemorrhagic fever with renal syndrome							
	Western equine encephalitis							
	Tick-borne encephalitis							
	Anthrax							
	Chikungunya fever					3		9
	Scrub typhus(Tsutsugamushi disease)		2		1	17	11	402
	Dengue fever		2	1		56	2	218
	Eastern equine encephalitis							
	Avian influenza (excluding H5N1)							
	Nipah virus infection							
	Japanese spotted fever						1	170
	Japanese encephalitis							2
	Hantavirus pulmonary syndrome							
	Herpes B virus infection							
	Glanders							
	Brucellosis							
	Venezuelan equine encephalitis							
	Hendra virus infection							
Epidemic typhus								
Botulism							3	
Malaria	1	1			24		72	
Tularemia								
Lyme disease							11	
Lyssavirus infection(excluding rabies)								
Rift valley fever								
Melioidosis								
Legionellosis	3	1			56	15	874	
Leptospirosis	1				6		30	
Rocky mountain spotted fever								

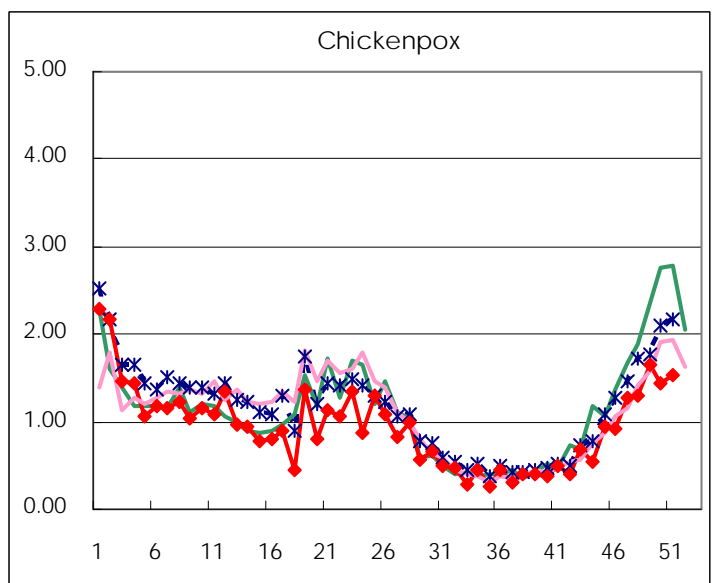
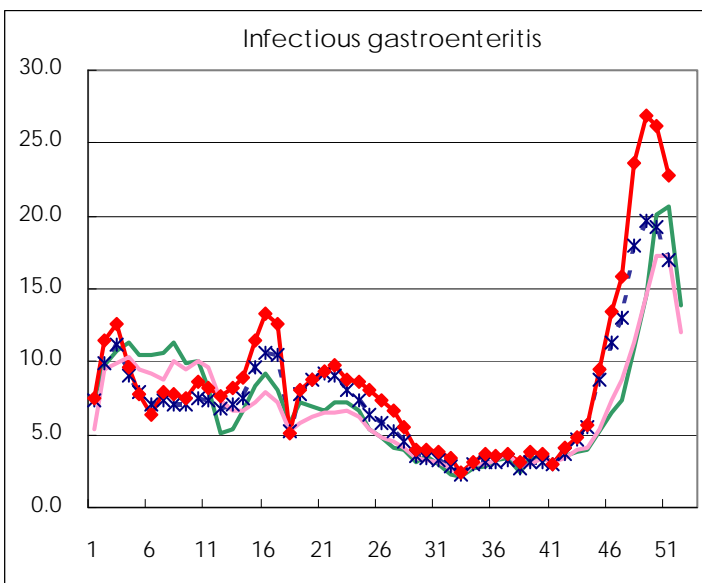
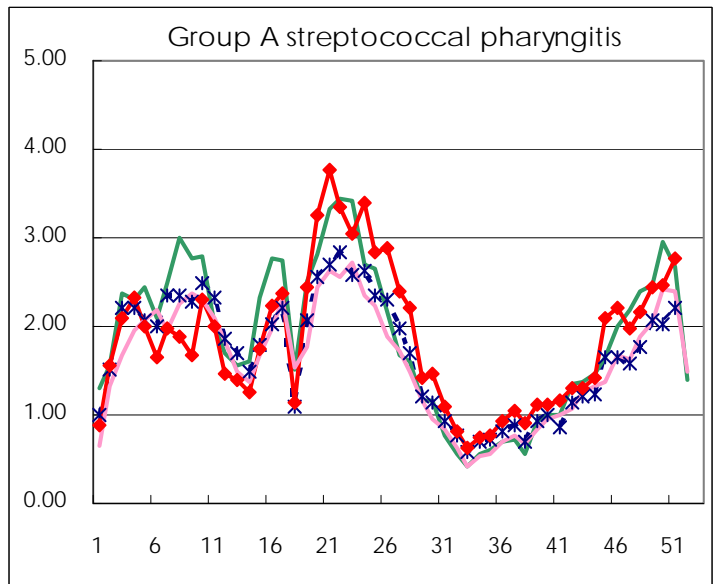
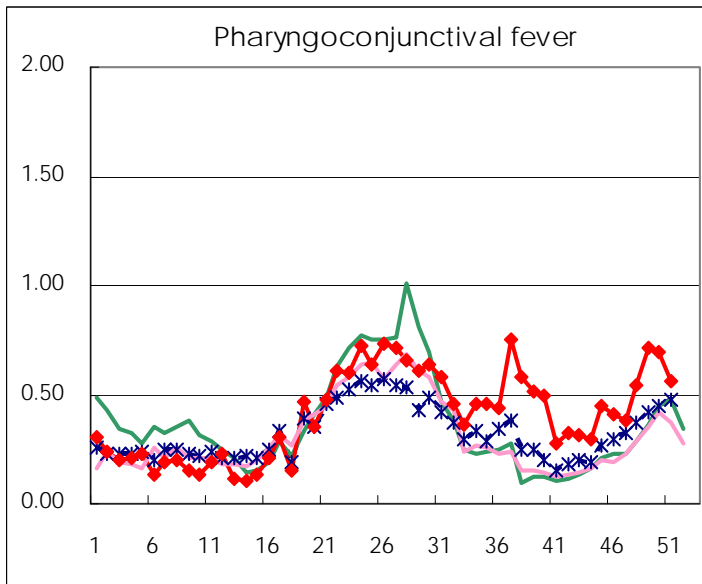
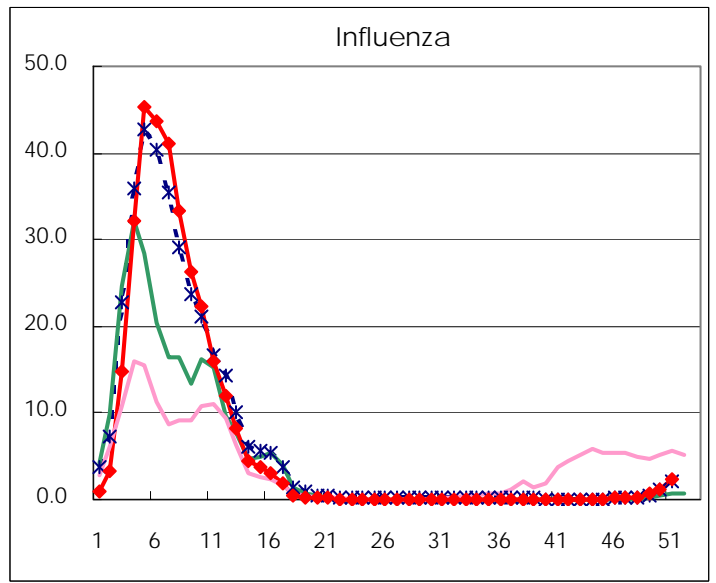
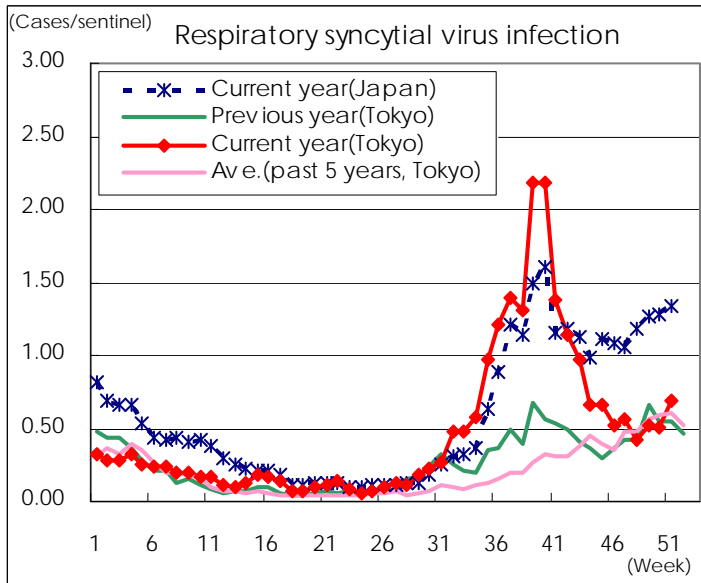
Category	Diseases	Tokyo				Japan		
		48th	49th	50th	51st	Cum 2012	51st	Cum 2012
V	Amebiasis	7	6	4	6	192	16	903
	Viral hepatitis(excluding hepatitis A and E)	1		3	3	58	8	226
	Acute encephalitis(excluding JE and WNE)	1		2	1	33	1	342
	Cryptosporidiosis					2		6
	Creutzfeldt-Jakob disease	1	1		1	17	3	179
	Severe invasive streptococcal infections(TSLS)			1		23	3	240
	Acquired immunodeficiency syndrome (AIDS)	10	4	18	8	453	5	1,372
	Giardiasis					16	1	69
	Meningococcal meningitis							12
	Congenital rubella syndrome							4
	Syphilis	8	5	11	5	289	10	853
	Tetanus					5	1	114
	Vancomycin-resistant S. aureus infection							
	Vancomycin-resistant Enterococcus infection					10		89
	Rubella	24	22	22	23	641	51	2,294
	Measles	2	2	1	1	82	6	292

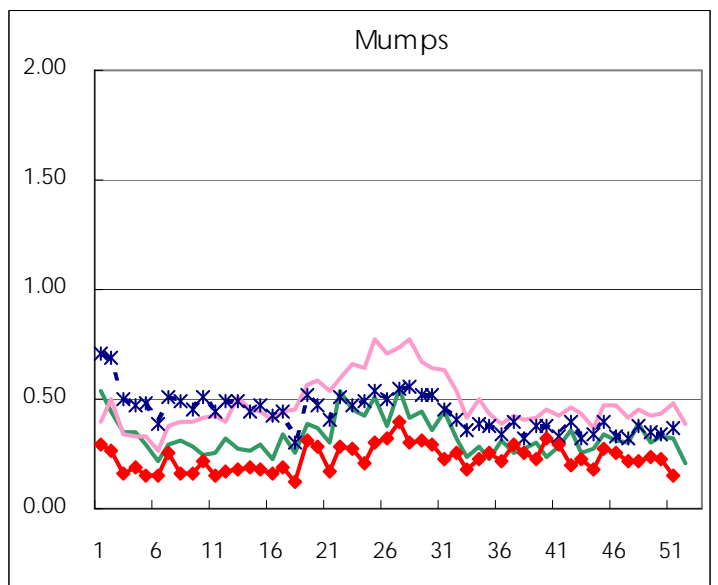
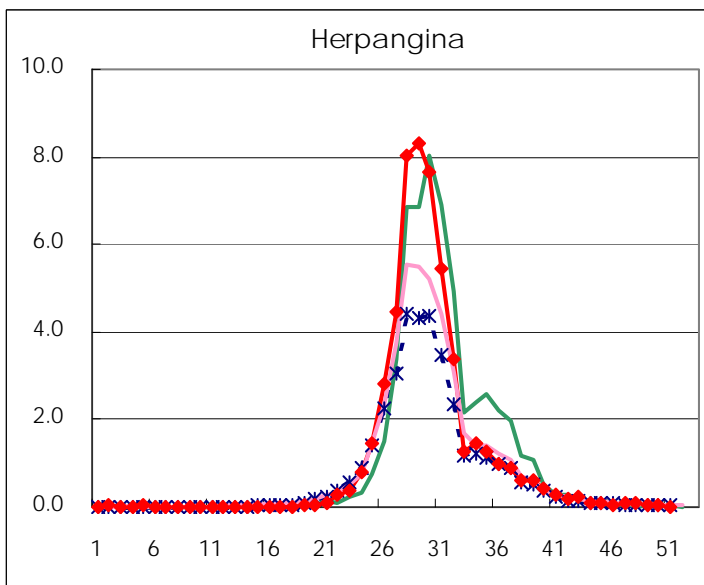
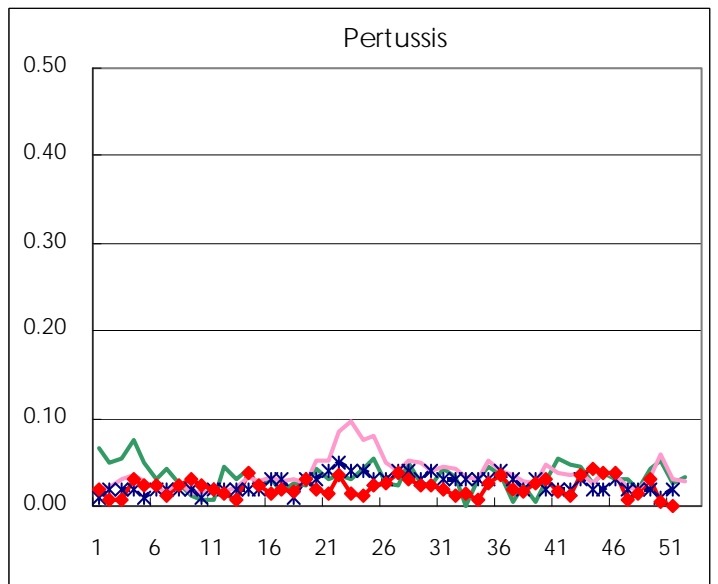
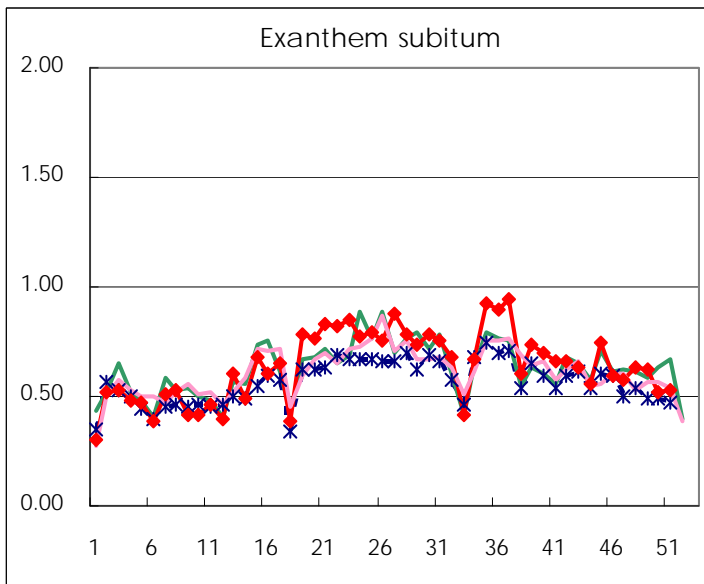
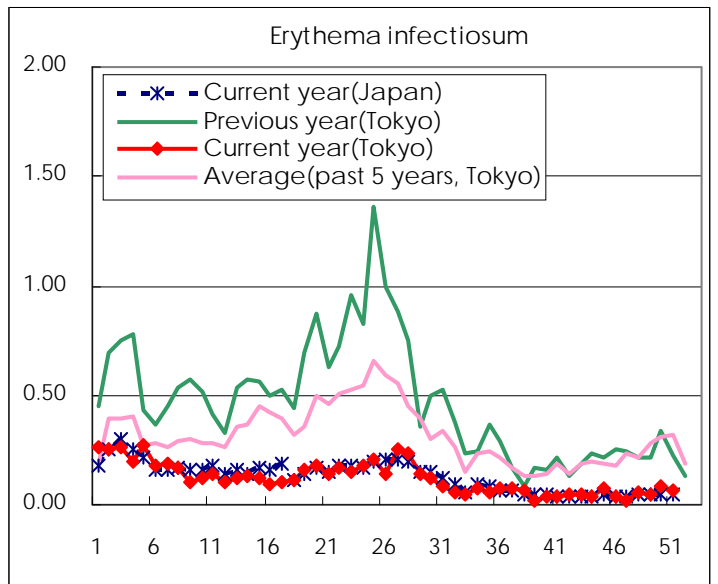
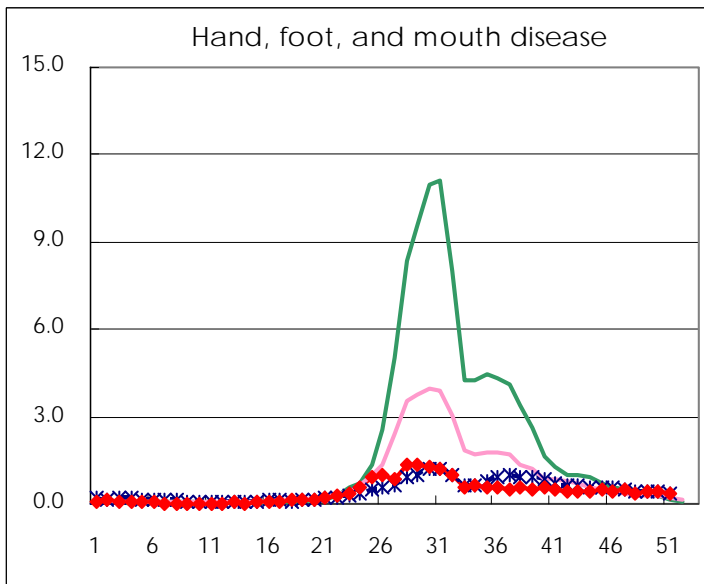
Number of patients with the diseases to be reported  
by the designated clinics and hospitals

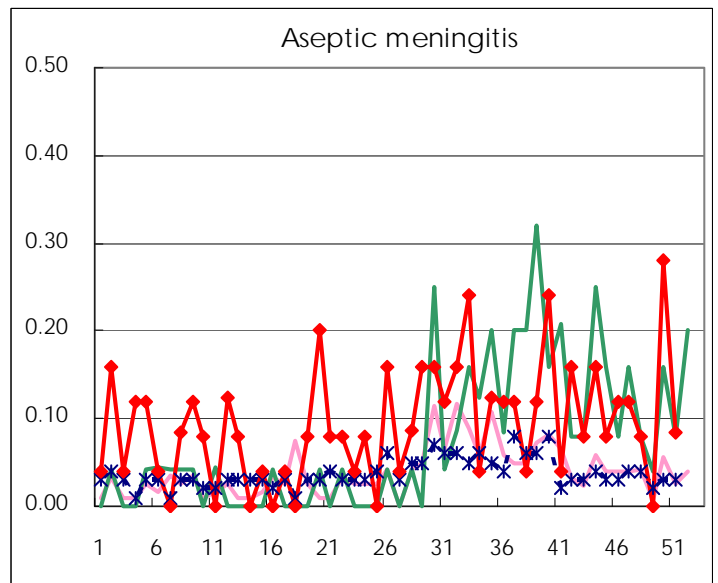
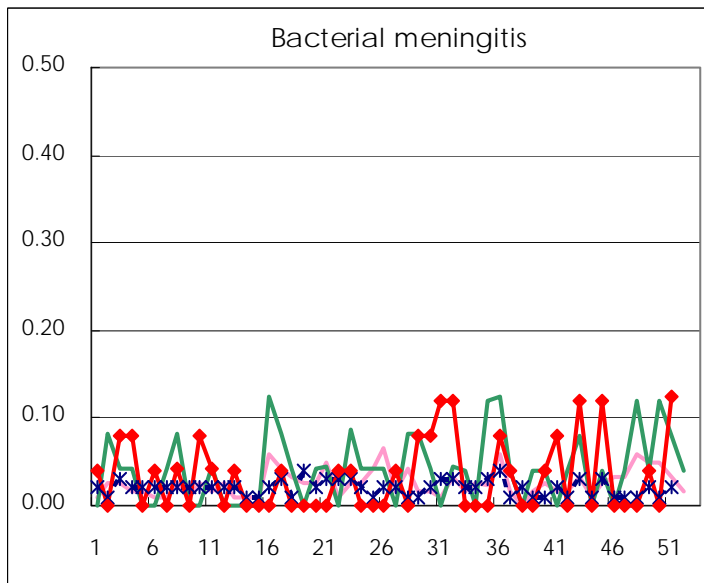
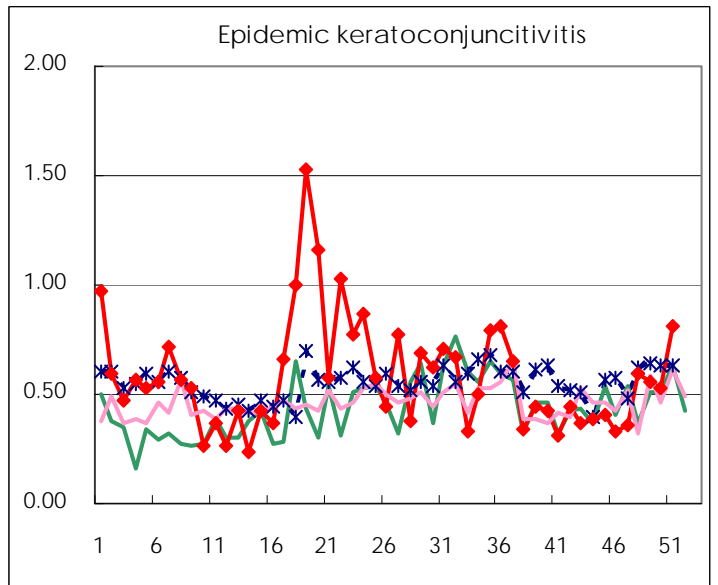
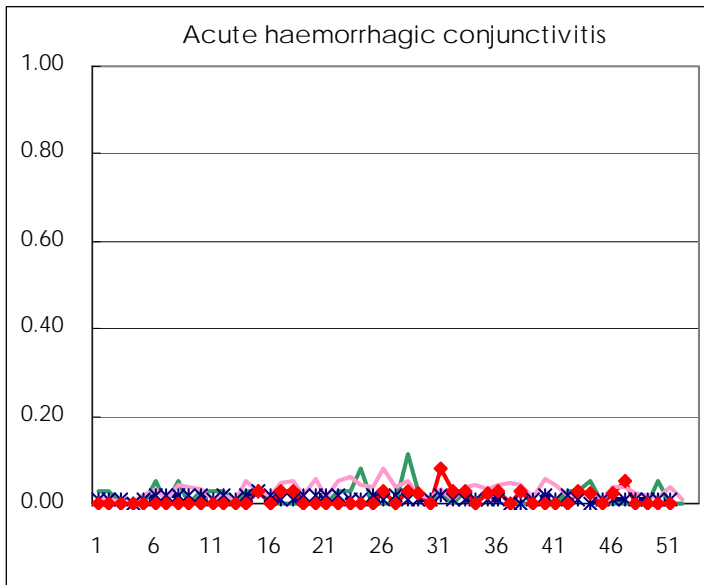
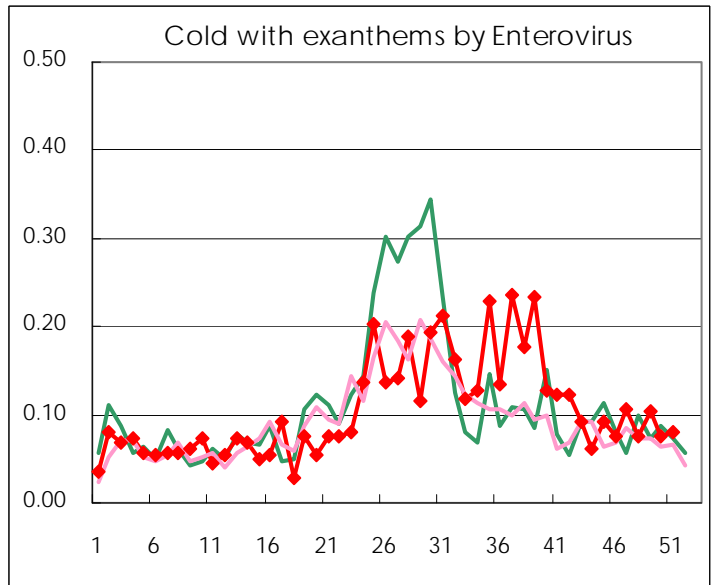
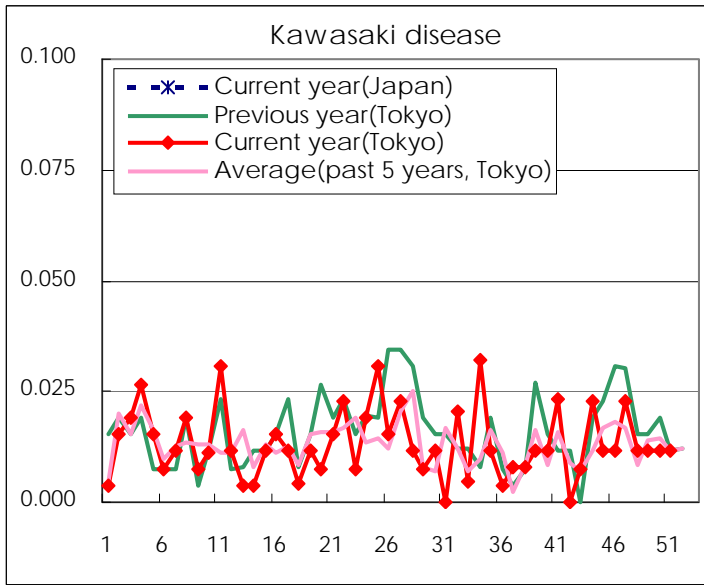
Diseases	Tokyo				
	48th	49th	50th	51st	/sentinel
Respiratory syncytial virus infection	110	138	135	181	0.69
Pharyngoconjunctival fever	144	186	184	147	0.56
Group A streptococcal pharyngitis	566	641	646	720	2.76
Infectious gastroenteritis	6,210	7,061	6,873	5,956	22.82
Chickenpox	343	431	381	403	1.54
Hand, foot, and mouth disease	100	110	107	84	0.32
Erythema infectiosum	15	12	22	16	0.06
Exanthem subitum	167	162	136	137	0.52
Pertussis	4	8	1		
Herpangina	20	16	16	6	0.02
Mumps	56	61	59	40	0.15
Kawasaki disease	3	3	3	3	0.01
Cold with exanthems by Enterovirus	20	27	20	21	0.08
Influenza	128	261	467	961	2.32
Acute hemorrhagic conjunctivitis					
Epidemic keratoconjunctivitis	23	21	20	31	0.82
Bacterial meningitis		1		3	0.13
Aseptic meningitis	2		7	2	0.08
Mycoplasma pneumonia	19	29	22	22	0.92
Chlamydial pneumonia (excluding psittacosis)			1		
Influenza-Associated Hospitalizations		2	1	2	0.08

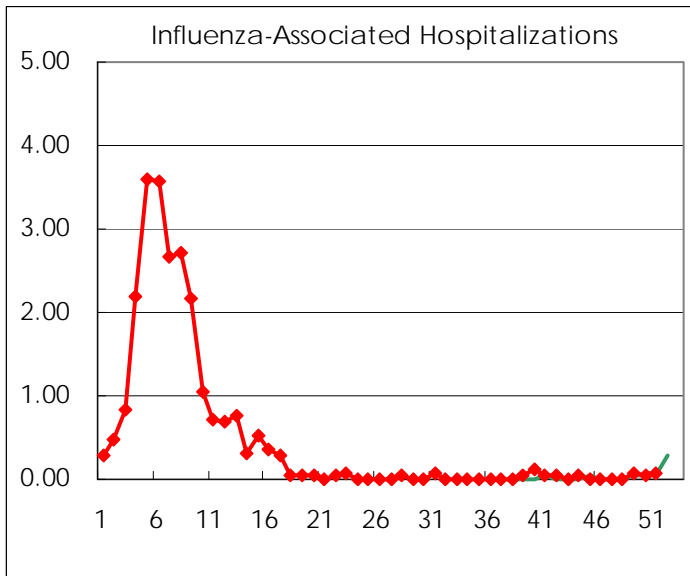
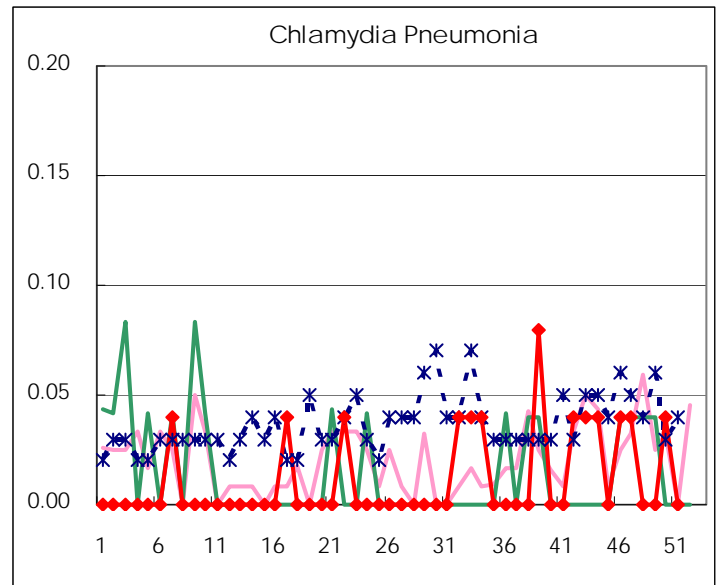
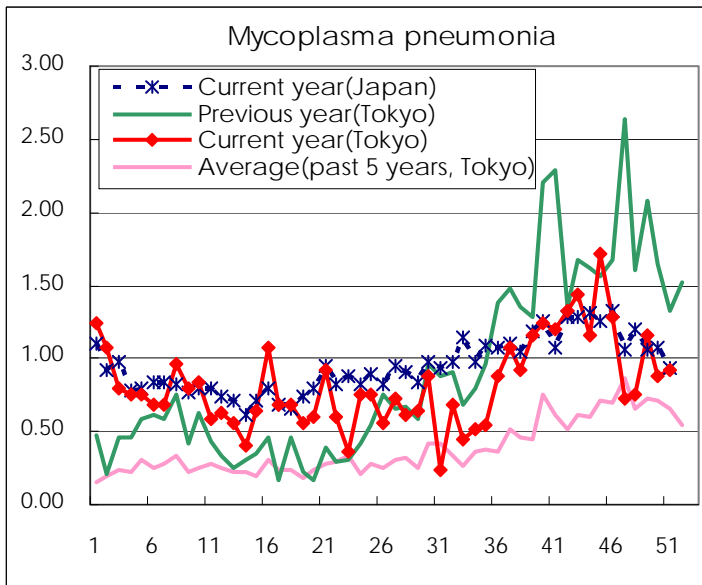
( Blank means 0. )

# Disease Trend Graph (weekly reported cases per sentinel in comparison)









Number of sentinel facilities for weekly reporting		
Types of sentinels	Number of sentinels	Sentinels having reported
Pediatric	264	261
Influenza	419	415
Ophthalmic	39	38
Specially-designated	25	24

Tokyo Metropolitan Government  
Infectious Disease Surveillance Center