
INFECTIOUS DISEASES WEEKLY REPORT

TOKYO IDWR

Tokyo Metropolitan Infectious Disease Surveillance Center

9 January 2013 / Number 52

Surveillance System in Tokyo, Japan

The infectious diseases which all physicians must report

All physicians must report to health centers the incidence of the diseases which are shown at page one. Health centers electronically report the individual cases to Tokyo Metropolitan Infectious Disease Surveillance Center.

The infectious diseases required to be reported by the sentinels

The numbers of patients who visit the sentinel clinics or hospitals during a week are reported to health centers in Tokyo. And they electronically report the numbers to Tokyo Metropolitan Infectious Disease Surveillance Center. We have about 500 sentinel clinics and hospitals in Tokyo.

1st Week is early January and 52nd Week is end of December.

Tokyo Metropolitan Institute of Public Health

TEL:81-3-3363-3213 FAX:81-3-5332-7365

e-mail:idsc@tokyo-eiken.go.jp

URL:idsc.tokyo-eiken.go.jp/

Number of patients with the diseases which all physicians must report

Category	Diseases	Tokyo				Japan		
		49th	50th	51st	52nd	Cum 2012	52nd	Cum 2012
I	Ebola hemorrhagic fever							
	Crimean-Congo hemorrhagic fever							
	Smallpox							
	South American hemorrhagic fever							
	Plague							
	Marburg disease							
	Lassa fever							
II	Acute poliomyelitis							
	Tuberculosis	82	97	87	81	4,532	413	28,763
	Diphtheria							
	Severe Acute Respiratory Syndrome(SARS)							
	Avian influenza H5N1							
III	Cholera							3
	Shigellosis	1	4	2	1	75	1	213
	Enterohemorrhagic Escherichia coli infection	3	1	1	1	258	14	3,746
	Typhoid fever	3				13		35
	Paratyphoid fever				1	11	2	23
IV	Hepatitis E	1		1		21		116
	West Nile fever							
	Hepatitis A					35	1	158
	Echinococcosis			1		1		15
	Yellow fever							
	Psittacosis							6
	Omsk hemorrhagic fever							
	Relapsing fever			1		1		1
	Kyasanur forest disease							
	Q fever							1
	Rabies							
	Coccidioidomycosis					1		2
	Monkeypox							
	Hemorrhagic fever with renal syndrome							
	Western equine encephalitis							
	Tick-borne encephalitis							
	Anthrax							
	Chikungunya fever					3		9
	Scrub typhus(Tsutsugamushi disease)	2		1	2	19	14	428
	Dengue fever	2	1			56	2	220
	Eastern equine encephalitis							
	Avian influenza (excluding H5N1)							
	Nipah virus infection							
	Japanese spotted fever							170
	Japanese encephalitis							2
	Hantavirus pulmonary syndrome							
	Herpes B virus infection							
	Glanders							
	Brucellosis							
	Venezuelan equine encephalitis							
	Hendra virus infection							
Epidemic typhus								
Botulism							3	
Malaria	1				24		73	
Tularemia								
Lyme disease							11	
Lyssavirus infection(excluding rabies)								
Rift valley fever								
Melioidosis								
Legionellosis	1		1	2	59	9	892	
Leptospirosis					6		30	
Rocky mountain spotted fever								

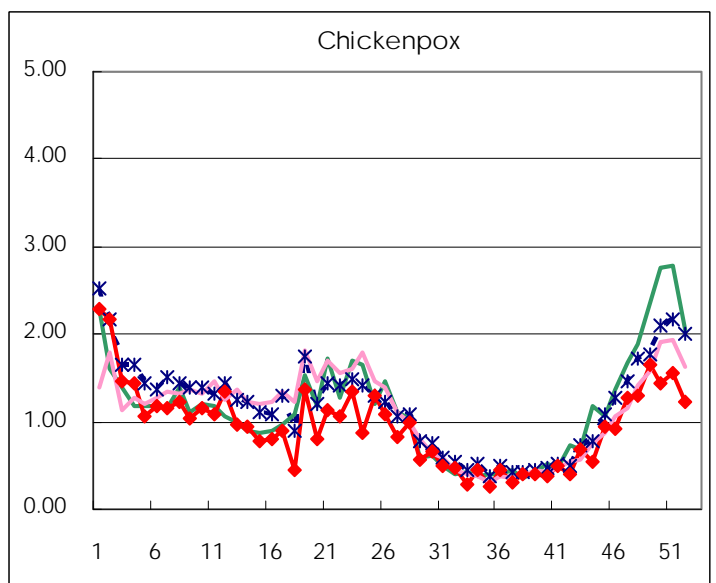
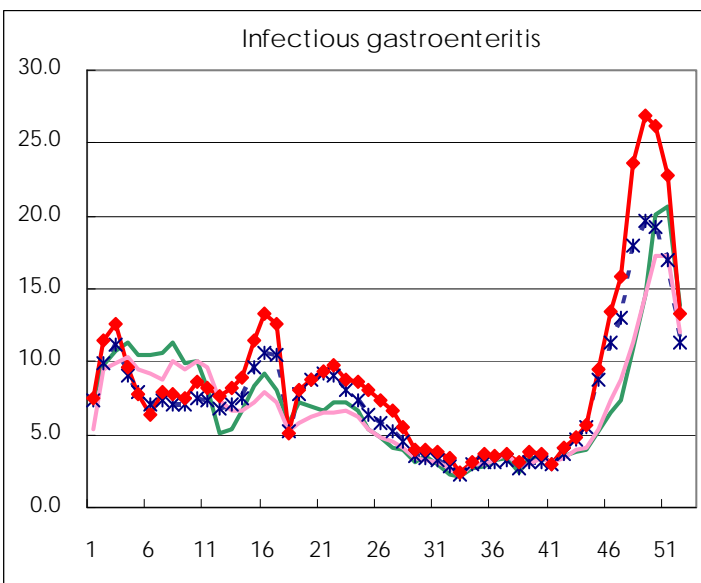
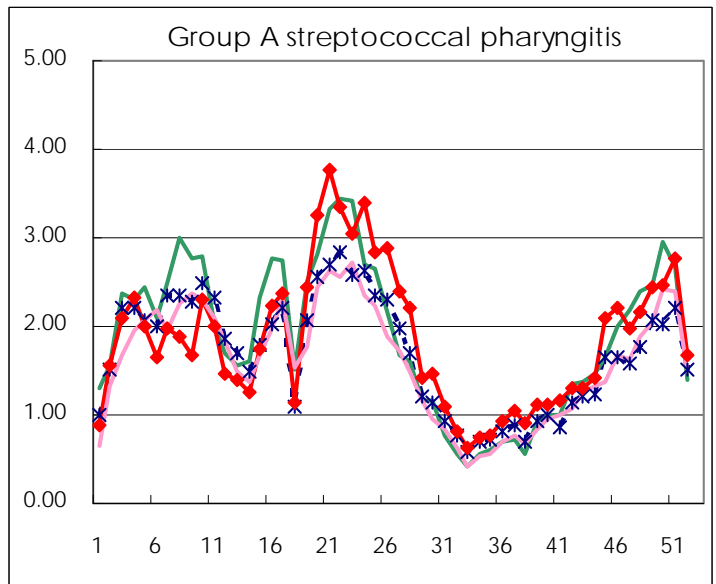
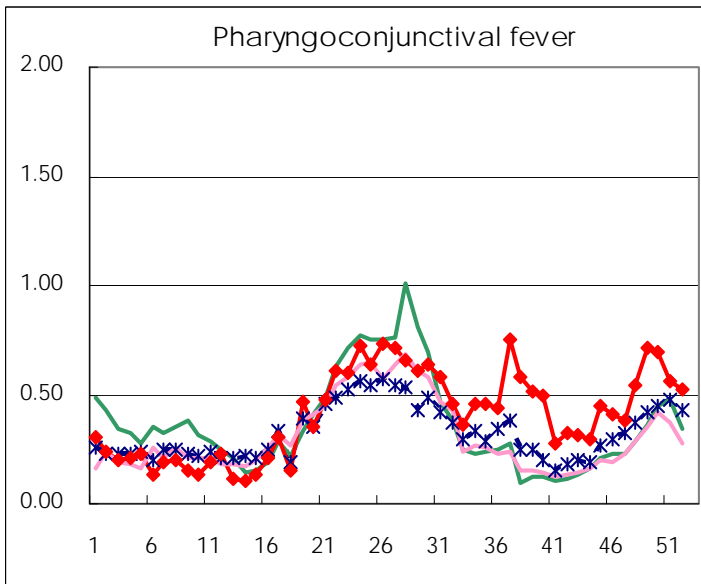
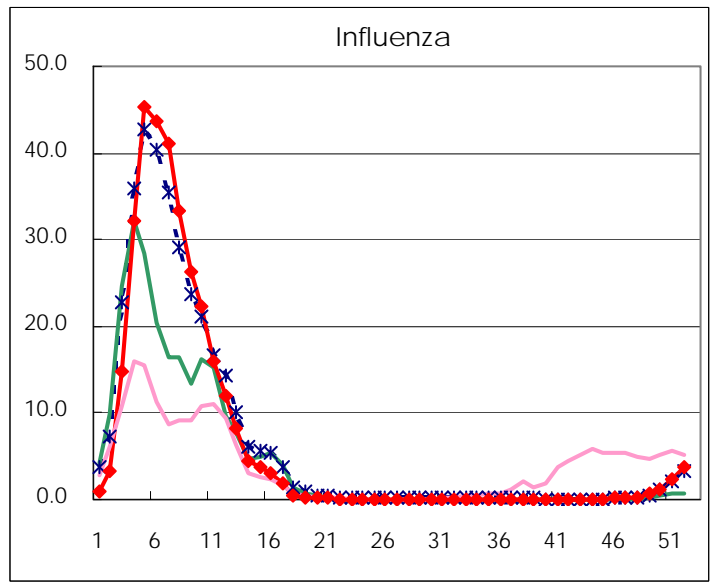
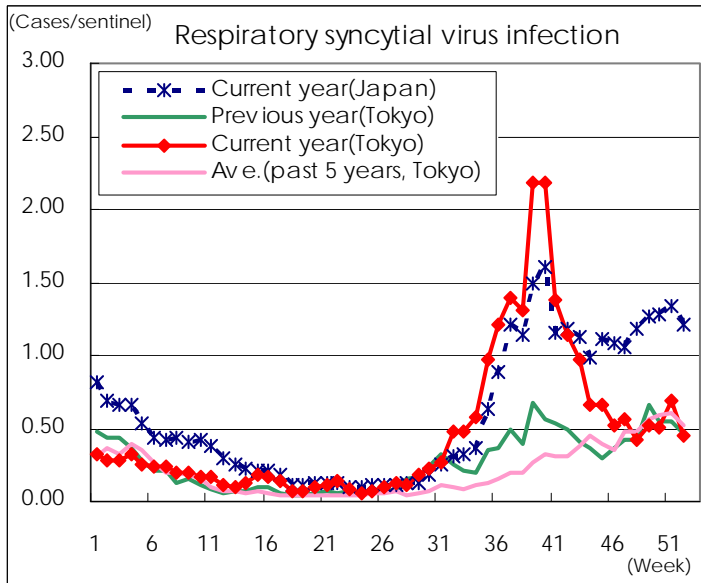
Category	Diseases	Tokyo				Cum 2012	Japan	
		49th	50th	51st	52nd		52nd	Cum 2012
V	Amebiasis	6	4	6	6	198	18	925
	Viral hepatitis(excluding hepatitis A and E)		3	3	2	60	4	233
	Acute encephalitis(excluding JE and WNE)		2	1		33	2	349
	Cryptosporidiosis					2		6
	Creutzfeldt-Jakob disease	1		1	1	18	3	181
	Severe invasive streptococcal infections(TSLS)		1			23	1	242
	Acquired immunodeficiency syndrome (AIDS)	4	18	8	8	461	17	1,406
	Giardiasis					16	1	71
	Meningococcal meningitis						2	15
	Congenital rubella syndrome							5
	Syphilis	5	11	5	7	296	23	883
	Tetanus					5	2	116
	Vancomycin-resistant S. aureus infection							
	Vancomycin-resistant Enterococcus infection					10	1	91
	Rubella	22	22	24	28	670	46	2,353
Measles	2	1	1	2	84	2	293	

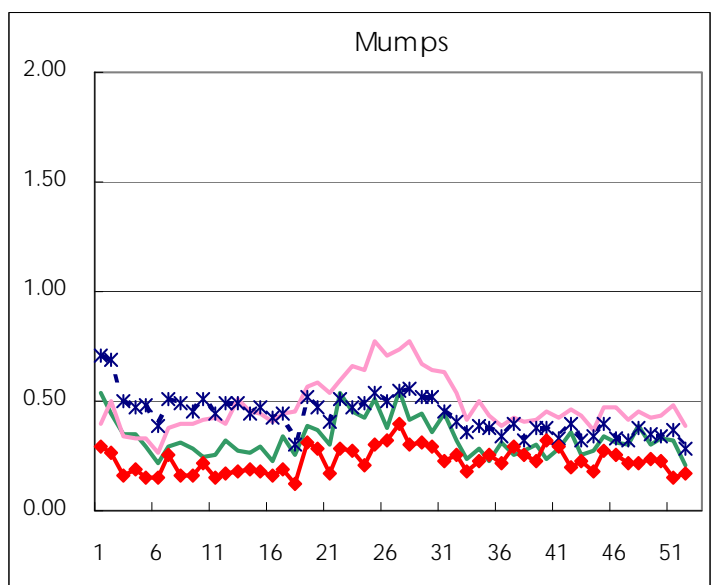
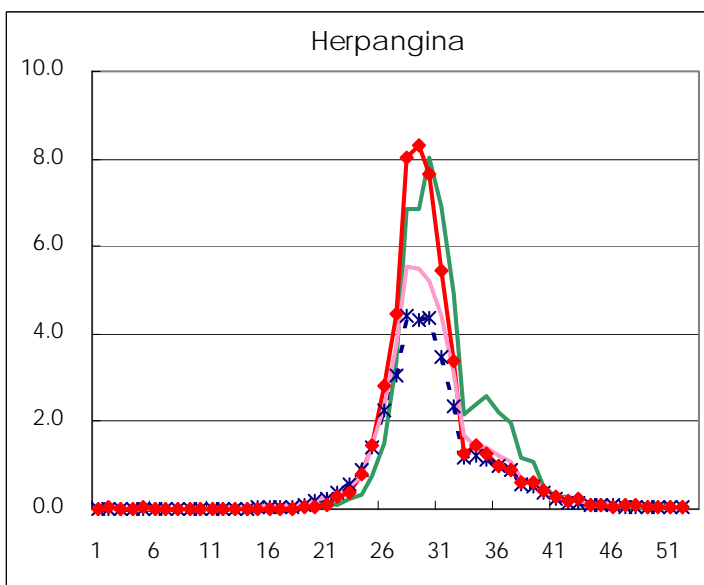
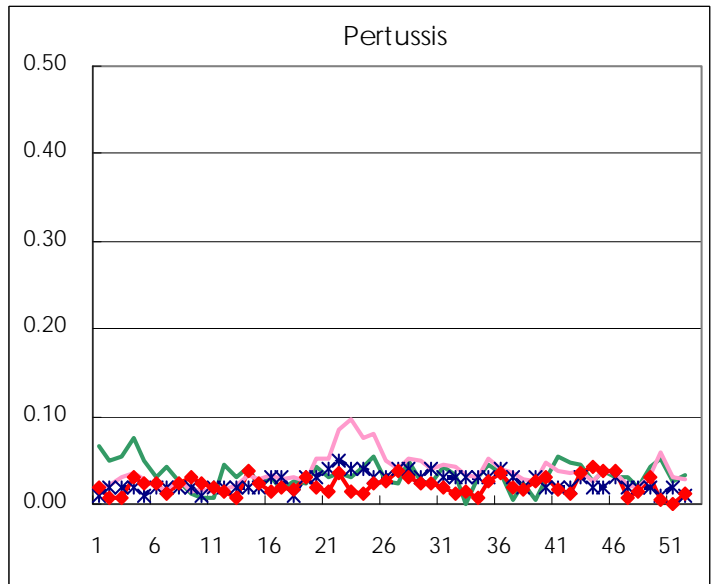
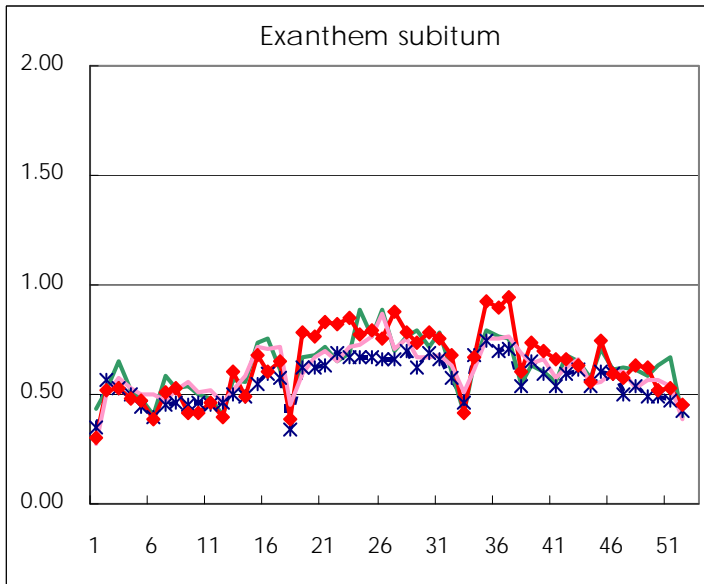
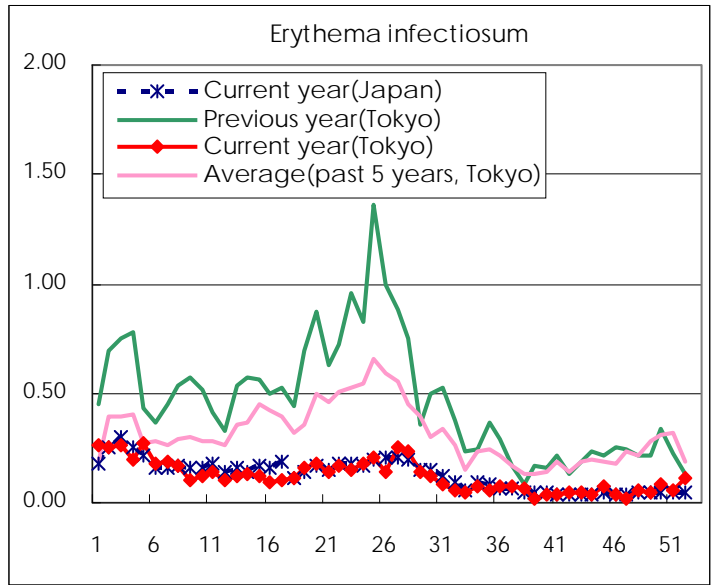
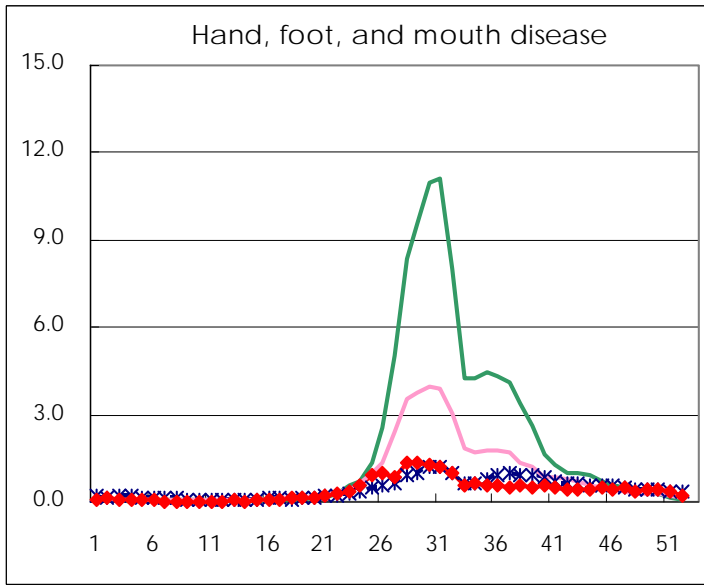
Number of patients with the diseases to be reported
by the designated clinics and hospitals

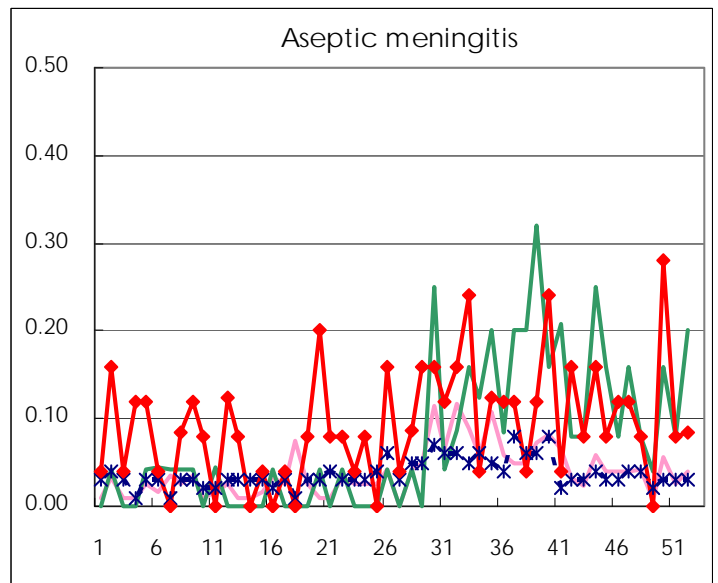
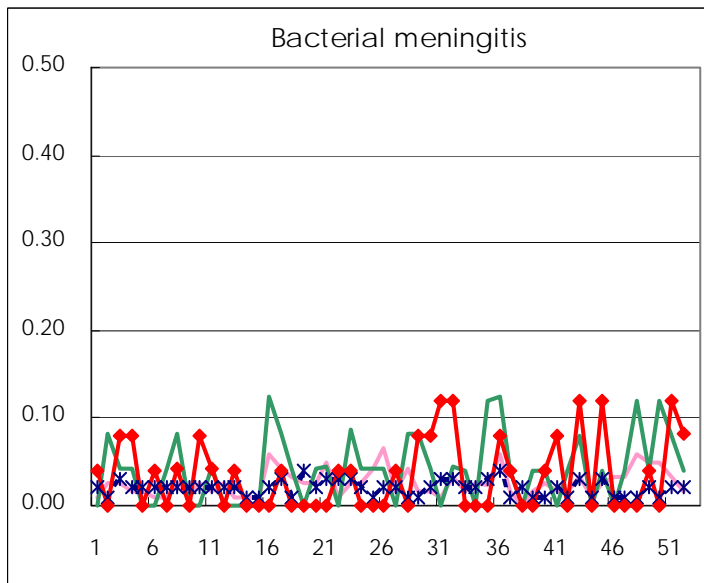
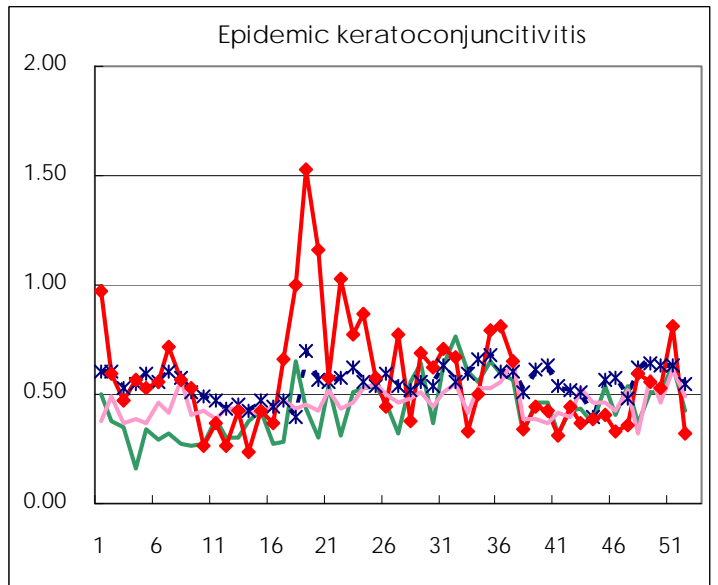
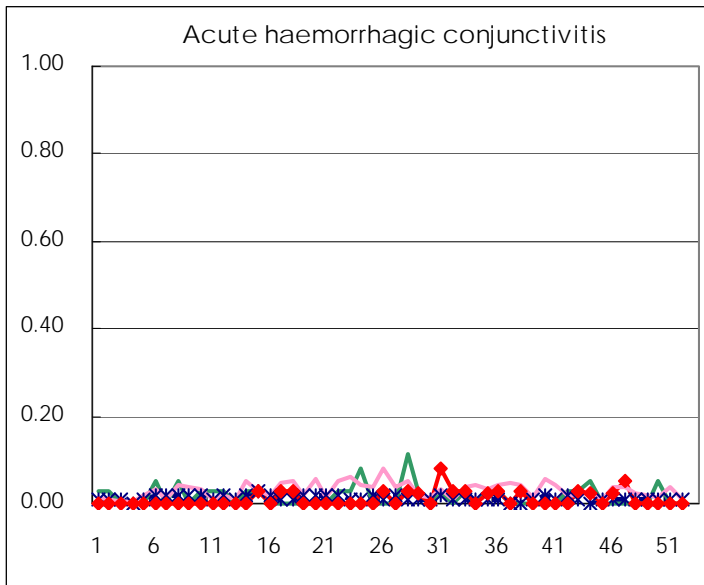
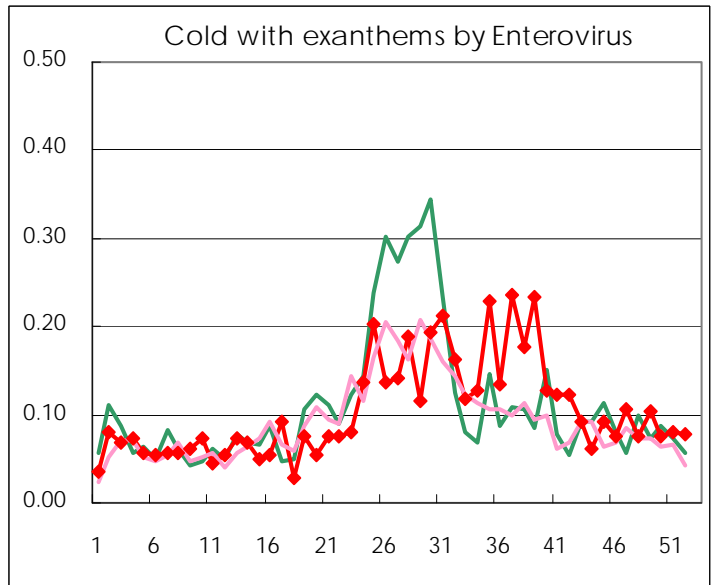
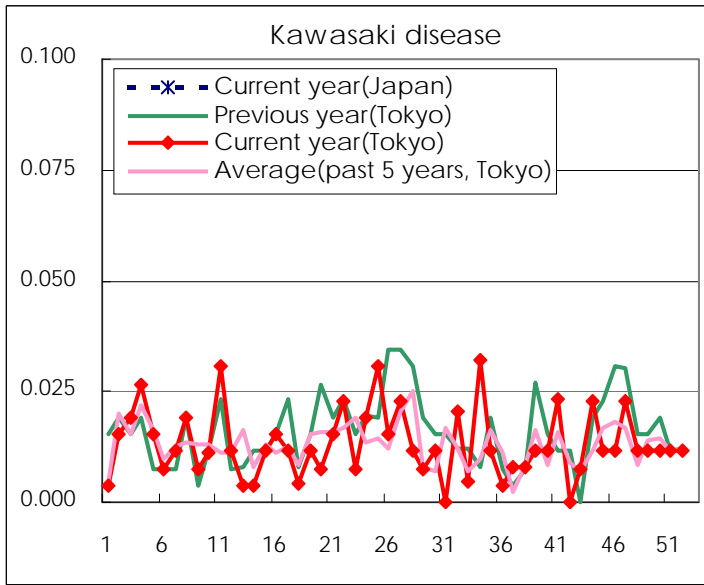
Diseases	Tokyo				
	49th	50th	51st	52nd	/sentinel
Respiratory syncytial virus infection	138	135	181	115	0.45
Pharyngoconjunctival fever	186	184	148	133	0.52
Group A streptococcal pharyngitis	641	646	727	428	1.68
Infectious gastroenteritis	7,061	6,873	5,989	3,405	13.35
Chickenpox	431	381	407	311	1.22
Hand, foot, and mouth disease	110	107	85	55	0.22
Erythema infectiosum	12	22	16	28	0.11
Exanthem subitum	162	136	139	116	0.45
Pertussis	8	1		3	0.01
Herpangina	16	16	15	9	0.04
Mumps	61	59	40	43	0.17
Kawasaki disease	3	3	3	3	0.01
Cold with exanthems by Enterovirus	27	20	21	20	0.08
Influenza	261	467	966	1,570	3.87
Acute hemorrhagic conjunctivitis					
Epidemic keratoconjunctivitis	21	20	31	12	0.32
Bacterial meningitis	1		3	2	0.08
Aseptic meningitis		7	2	2	0.08
Mycoplasma pneumonia	29	22	22	18	0.75
Chlamydial pneumonia (excluding psittacosis)		1			
Influenza-Associated Hospitalizations	2	1	3	10	0.42

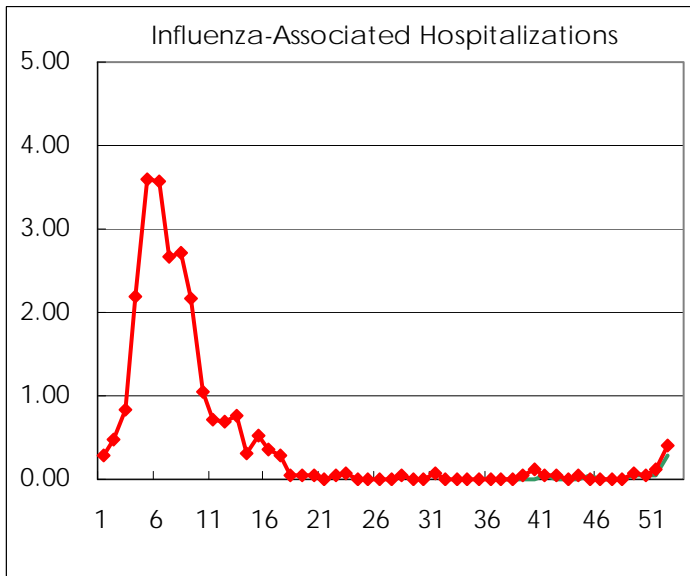
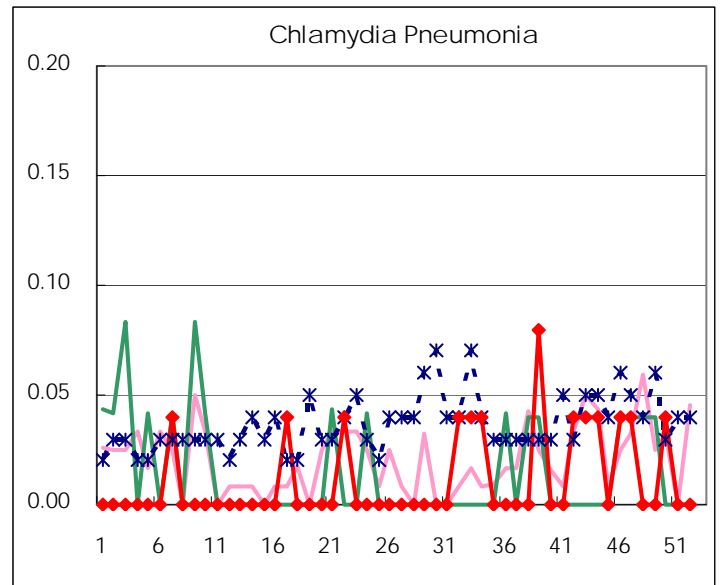
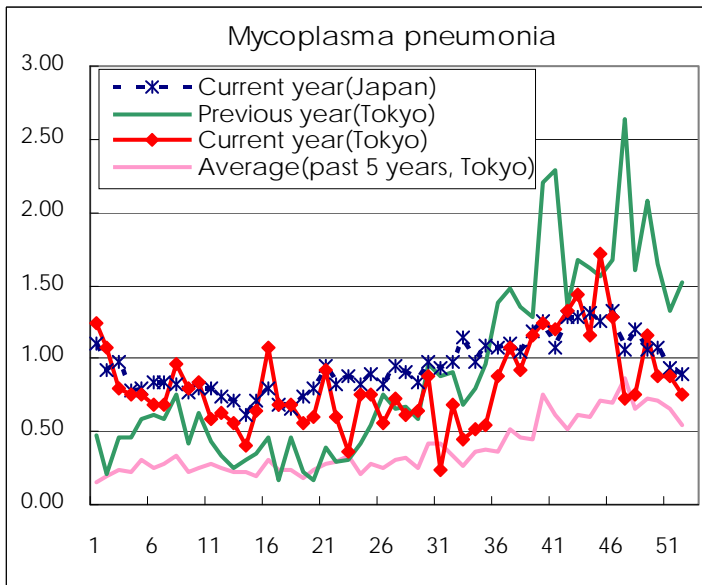
(Blank means 0.)

Disease Trend Graph (weekly reported cases per sentinel in comparison)









Number of sentinel facilities for weekly reporting		
Types of sentinels	Number of sentinels	Sentinels having reported
Pediatric	264	255
Influenza	419	406
Ophthalmic	39	37
Specially-designated	25	24

Tokyo Metropolitan Government
Infectious Disease Surveillance Center