

---

INFECTIOUS DISEASES WEEKLY REPORT

# TOKYO IDWR

Tokyo Metropolitan Infectious Disease Surveillance Center

---

**31 January 2013 / Number 4**

## Surveillance System in Tokyo, Japan

The infectious diseases which all physicians must report

All physicians must report to health centers the incidence of the diseases which are shown at page one. Health centers electronically report the individual cases to Tokyo Metropolitan Infectious Disease Surveillance Center.

The infectious diseases required to be reported by the sentinels

The numbers of patients who visit the sentinel clinics or hospitals during a week are reported to health centers in Tokyo. And they electronically report the numbers to Tokyo Metropolitan Infectious Disease Surveillance Center. We have about 500 sentinel clinics and hospitals in Tokyo.

1st Week is early January and 52nd Week is end of December.

Tokyo Metropolitan Institute of Public Health

TEL:81-3-3363-3213 FAX:81-3-5332-7365

e-mail:[idsc@tokyo-eiken.go.jp](mailto:idsc@tokyo-eiken.go.jp)

URL:[idsc.tokyo-eiken.go.jp/](http://idsc.tokyo-eiken.go.jp/)

---

Number of patients with the diseases which all physicians must report

Category	Diseases	Tokyo				Japan		
		1st	2nd	3rd	4th	Cum 2013	4th	Cum 2013
I	Ebola hemorrhagic fever							
	Crimean-Congo hemorrhagic fever							
	Smallpox							
	South American hemorrhagic fever							
	Plague							
	Marburg disease							
	Lassa fever							
II	Acute poliomyelitis							
	Tuberculosis	12	86	65	77	240	353	1,395
	Diphtheria							
	Severe Acute Respiratory Syndrome(SARS)							
	Avian influenza H5N1							
III	Cholera							
	Shigellosis			1		1		6
	Enterohemorrhagic Escherichia coli infection	1		1	1	3	11	36
	Typhoid fever		1	1		2		5
	Paratyphoid fever		1	1		2		4
IV	Hepatitis E	1	2	1		4		3
	West Nile fever							
	Hepatitis A				1	1	2	5
	Echinococcosis							
	Yellow fever							
	Psittacosis							
	Omsk hemorrhagic fever							
	Relapsing fever							
	Kyasanur forest disease							
	Q fever							
	Rabies							
	Coccidioidomycosis							
	Monkeypox							
	Hemorrhagic fever with renal syndrome							
	Western equine encephalitis							
	Tick-borne encephalitis							
	Anthrax							
	Chikungunya fever	1				1		1
	Scrub typhus(Tsutsugamushi disease)						3	19
	Dengue fever		2			2		8
	Eastern equine encephalitis							
	Avian influenza (excluding H5N1)							
	Nipah virus infection							
	Japanese spotted fever							1
	Japanese encephalitis							
	Hantavirus pulmonary syndrome							
	Herpes B virus infection							
	Glanders							
	Brucellosis							
	Venezuelan equine encephalitis							
	Hendra virus infection							
	Epidemic typhus							
Botulism								
Malaria							4	
Tularemia								
Lyme disease								
Lyssavirus infection(excluding rabies)								
Rift valley fever								
Melioidosis								
Legionellosis	1	4	2	1	8	16	54	
Leptospirosis						1	1	
Rocky mountain spotted fever								

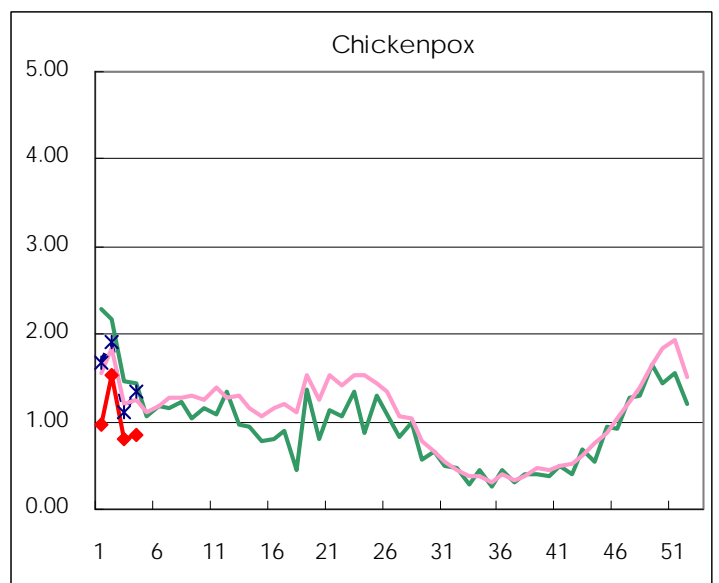
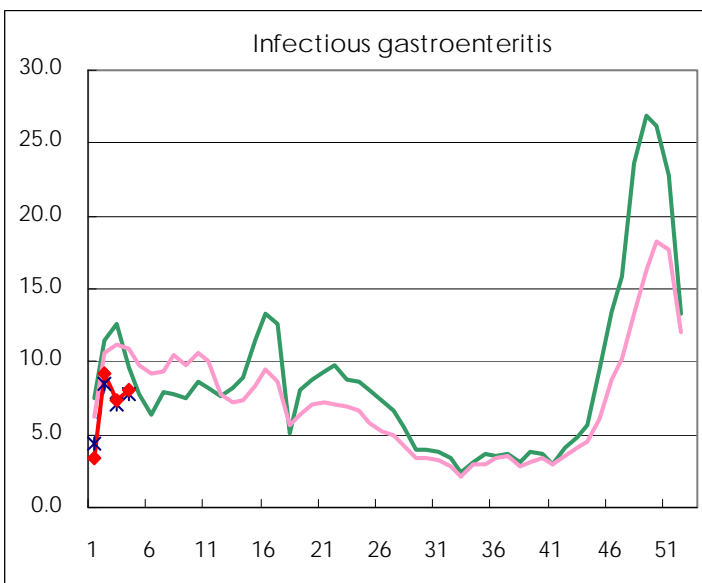
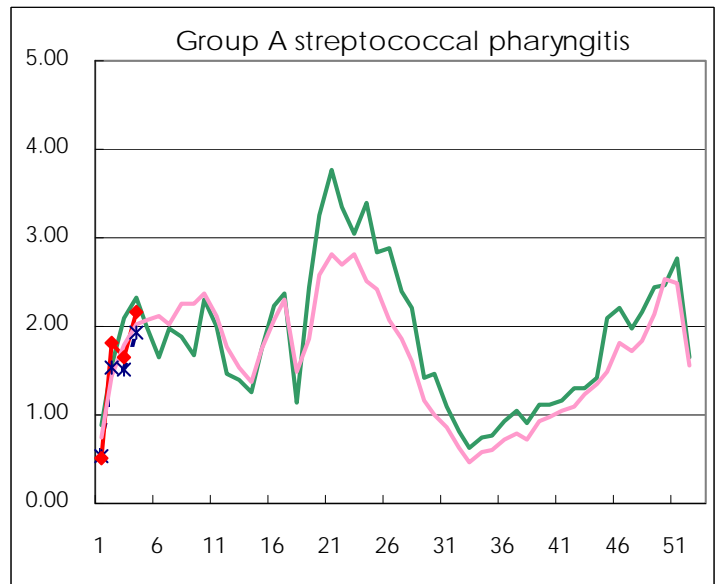
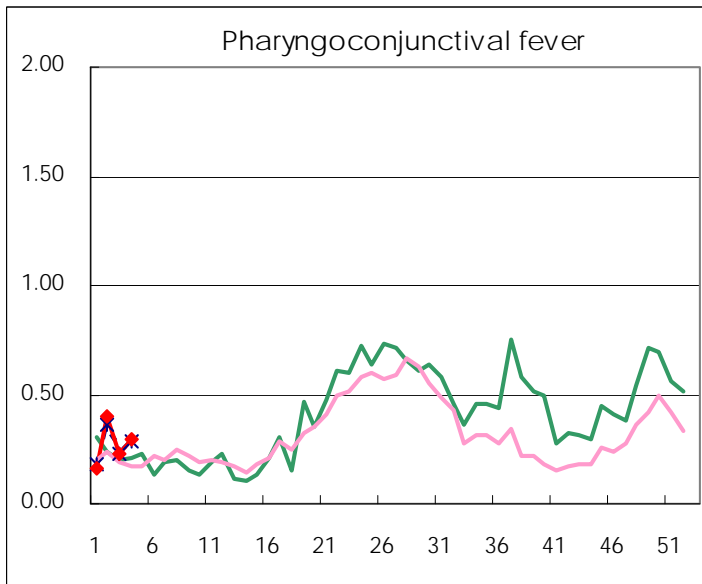
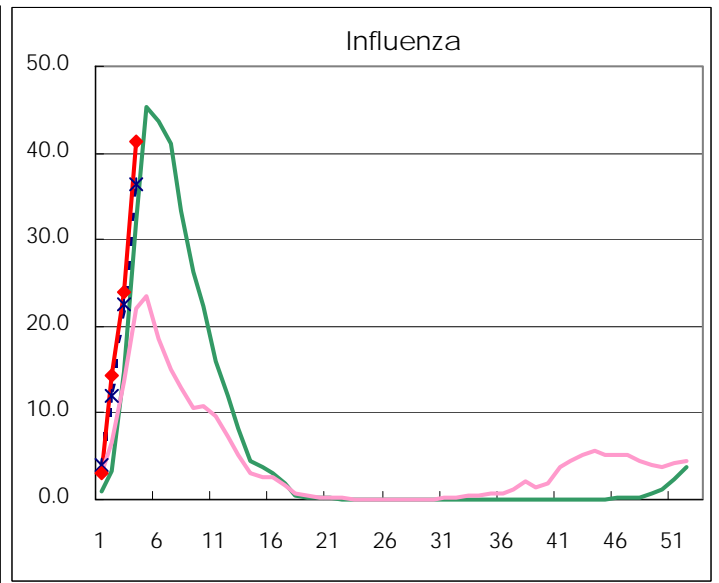
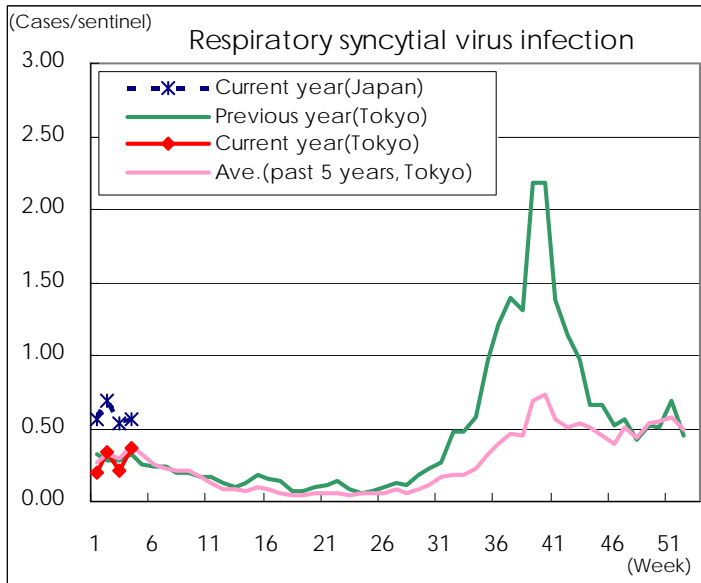
Category	Diseases	Tokyo					Japan	
		1st	2nd	3rd	4th	Cum 2013	4th	Cum 2013
V	Amebiasis	1	2	2	6	11	15	58
	Viral hepatitis(excluding hepatitis A and E)		2	2		4	2	11
	Acute encephalitis(excluding JE and WNE)		3		2	5	10	38
	Cryptosporidiosis							
	Creutzfeldt-Jakob disease			1		1	2	8
	Severe invasive streptococcal infections(TSLS)		1		1	2	4	18
	Acquired immunodeficiency syndrome (AIDS)	3	11	9	6	29	12	70
	Giardiasis				1	1	1	4
	Meningococcal meningitis							
	Congenital rubella syndrome							1
	Syphilis	3	7	8	6	24	14	59
	Tetanus	1	1			2		5
	Vancomycin-resistant S. aureus infection							
	Vancomycin-resistant Enterococcus infection		1			1		9
	Rubella	7	41	37	43	128	76	254
	Measles		1		4	5	7	18

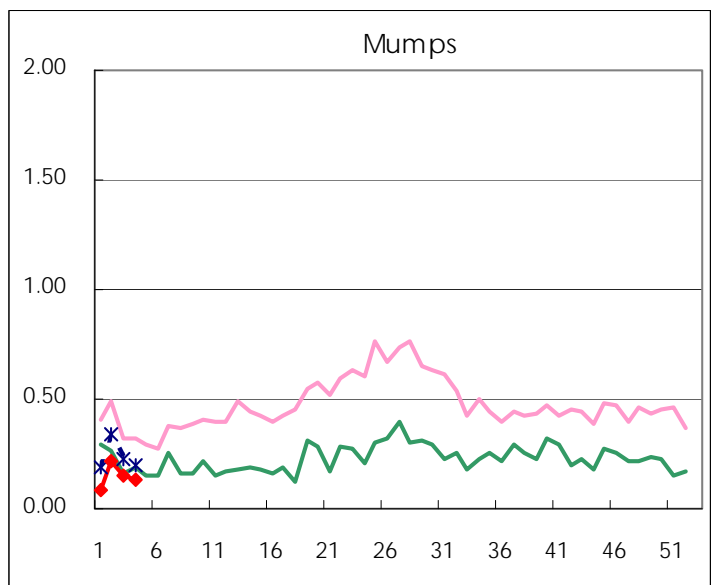
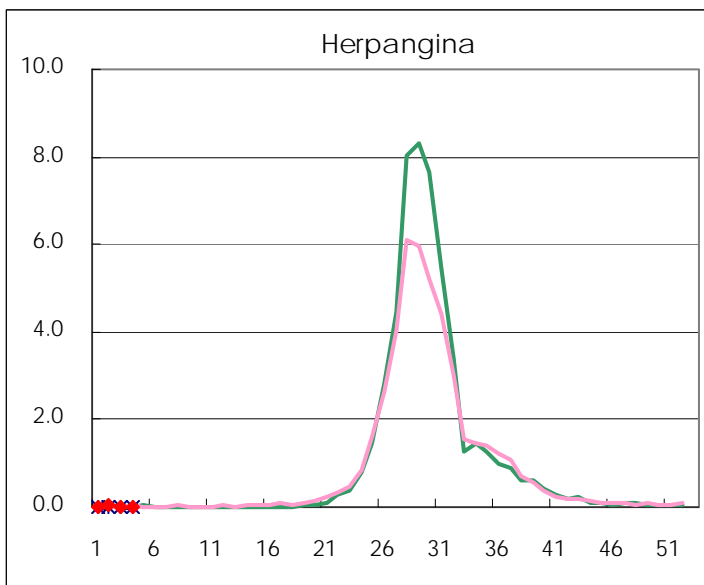
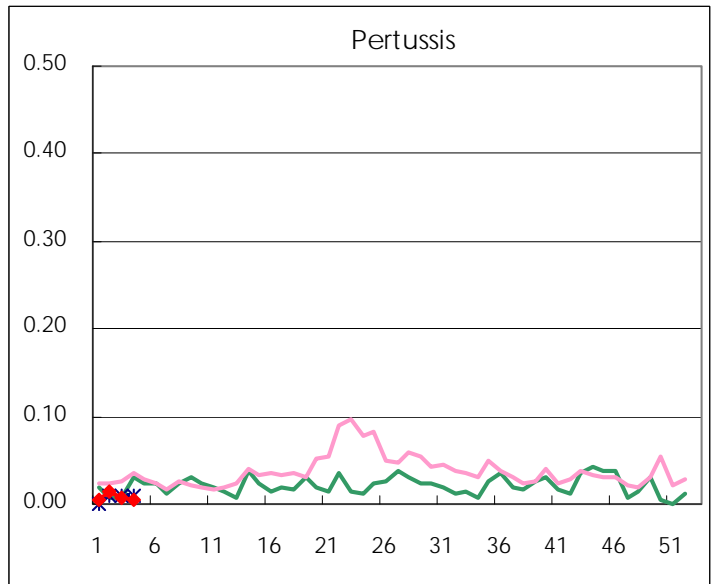
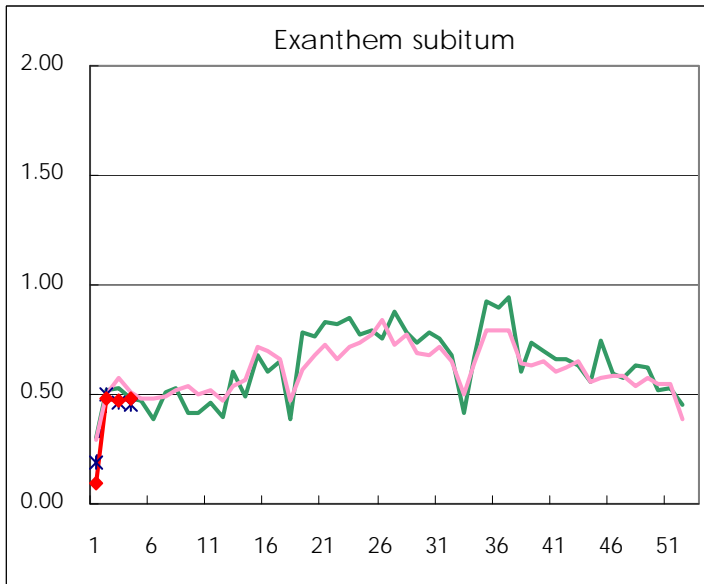
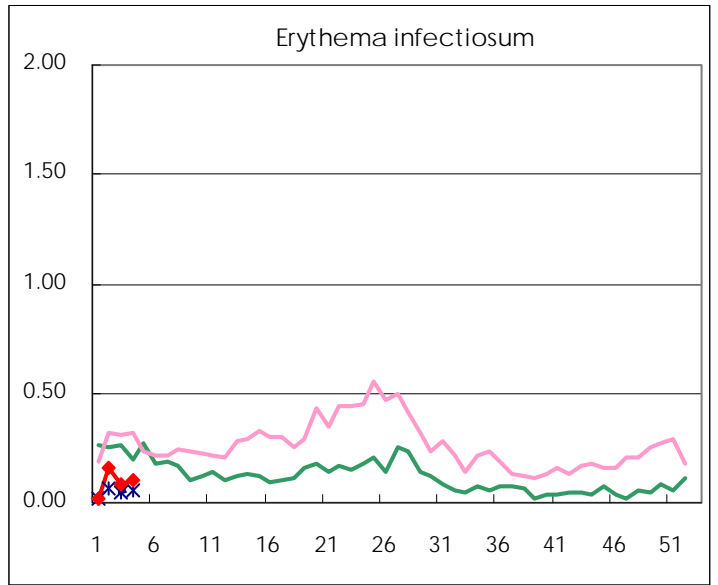
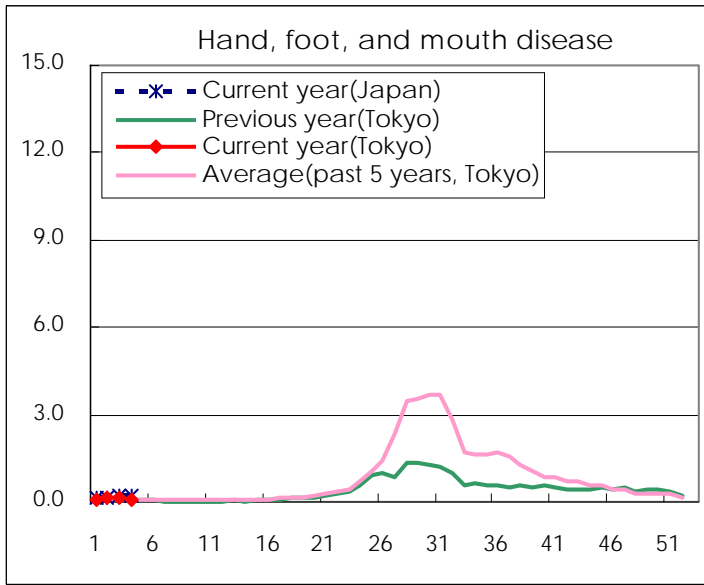
Number of patients with the diseases to be reported  
by the designated clinics and hospitals

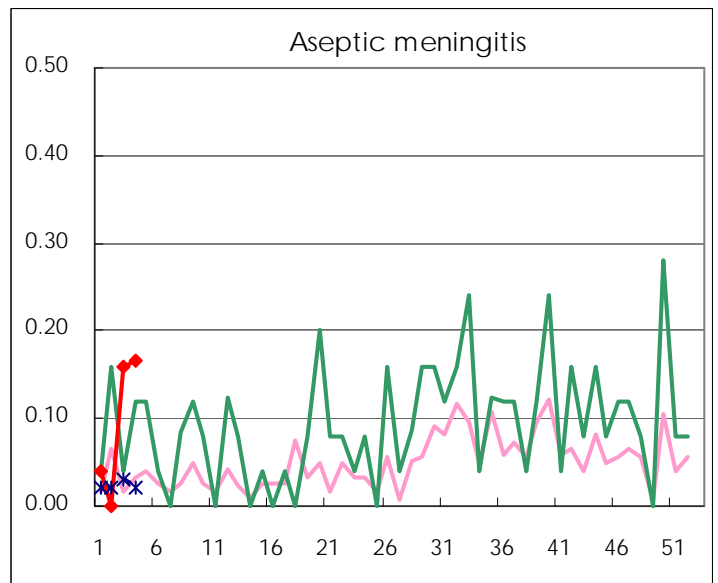
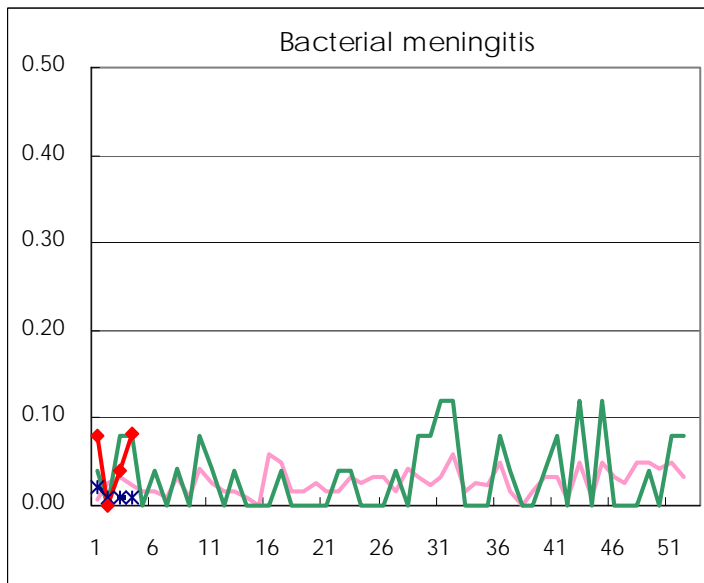
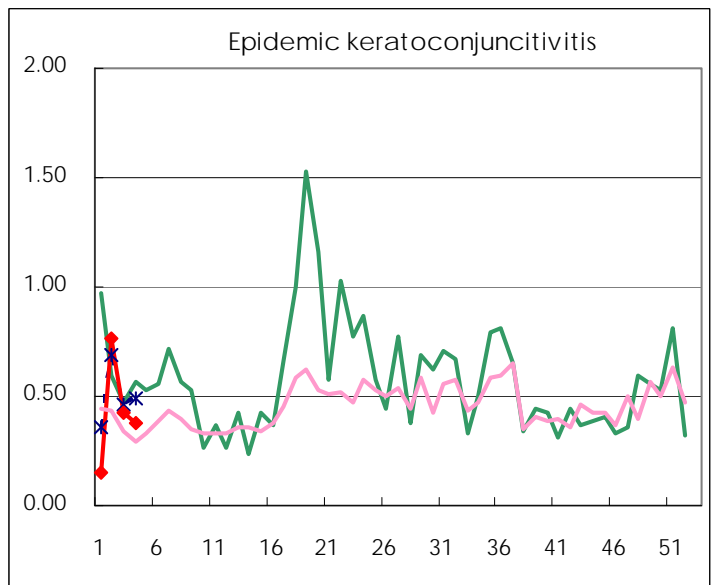
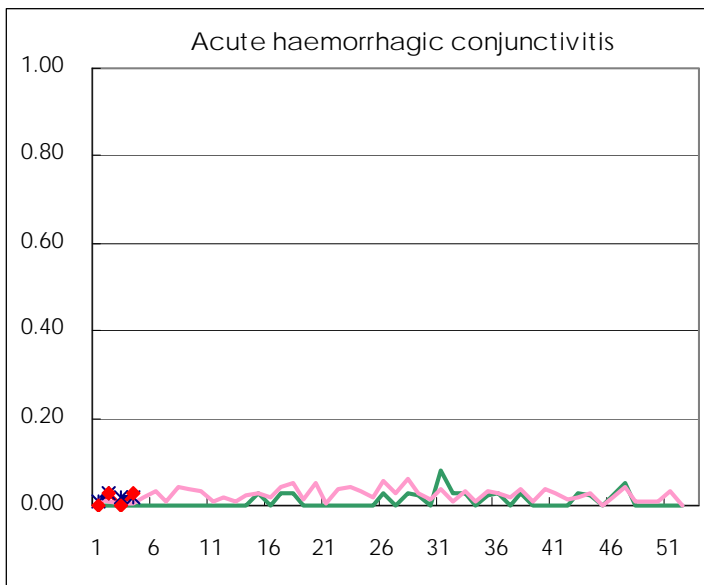
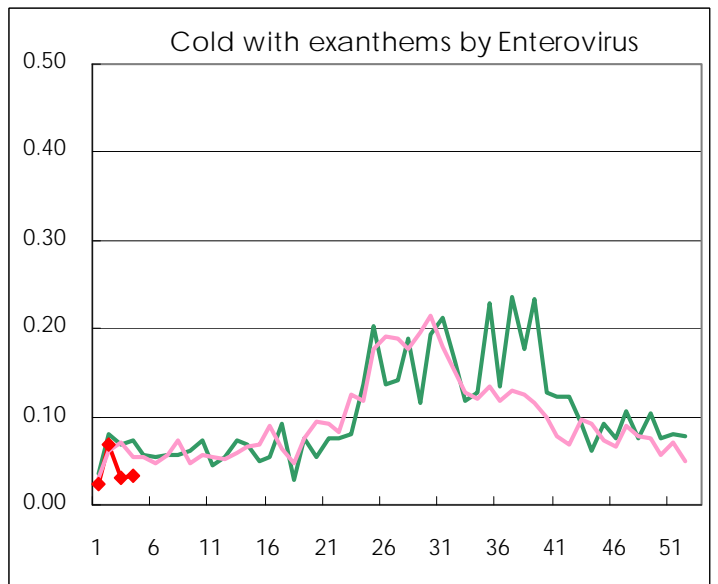
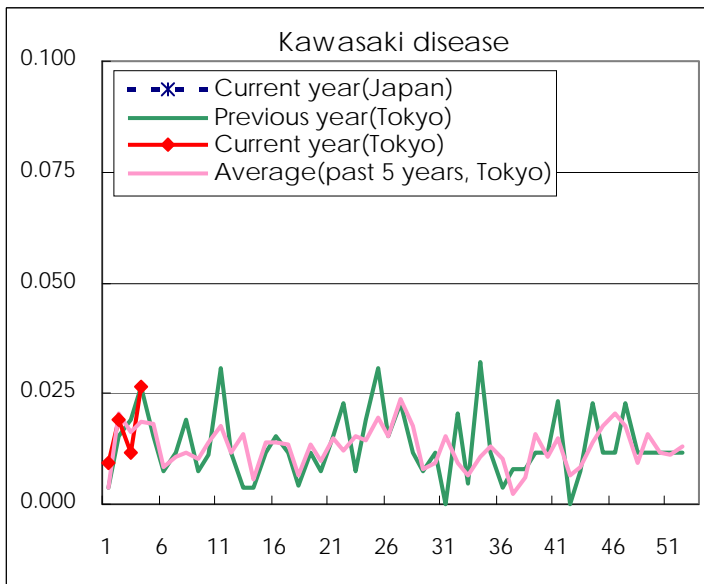
Diseases	Tokyo				
	1st	2nd	3rd	4th	/sentinel
Respiratory syncytial virus infection	44	90	57	98	0.37
Pharyngoconjunctival fever	36	104	61	78	0.30
Group A streptococcal pharyngitis	111	475	436	570	2.16
Infectious gastroenteritis	729	2,425	1,920	2,148	8.14
Chickenpox	210	406	209	226	0.86
Hand, foot, and mouth disease	17	40	30	22	0.08
Erythema infectiosum	5	42	23	27	0.10
Exanthem subitum	20	127	125	126	0.48
Pertussis	1	4	2	1	0.00
Herpangina	2	7	4	1	0.00
Mumps	19	57	39	34	0.13
Kawasaki disease	2	5	3	7	0.03
Cold with exanthems by Enterovirus	5	18	8	9	0.03
Influenza	1,127	5,922	9,996	17,259	41.29
Acute hemorrhagic conjunctivitis		1		1	0.03
Epidemic keratoconjunctivitis	5	29	16	14	0.38
Bacterial meningitis	2		1	2	0.08
Aseptic meningitis	1		4	4	0.17
Mycoplasma pneumonia	11	12	16	12	0.50
Chlamydial pneumonia (excluding psittacosis)		2			
Influenza-Associated Hospitalizations	21	42	71	101	4.21

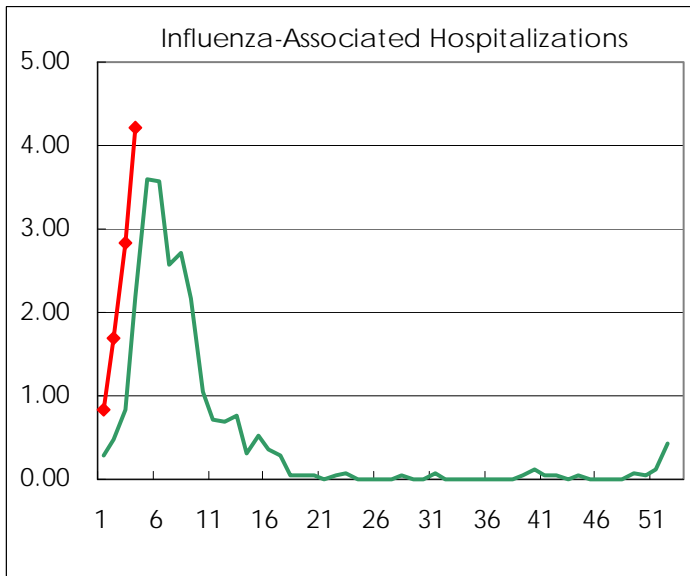
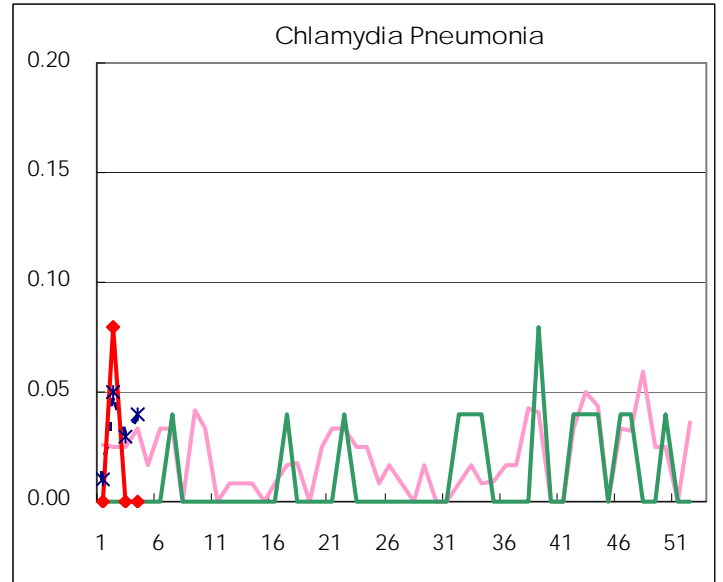
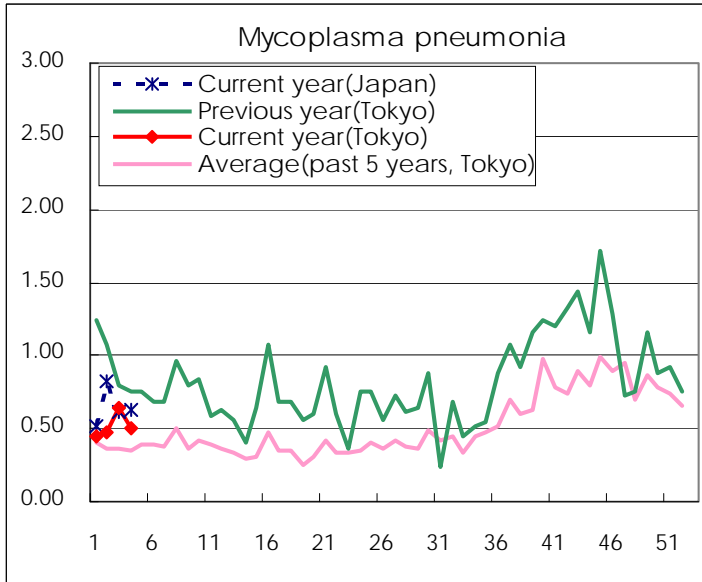
( Blank means 0. )

# Disease Trend Graph (weekly reported cases per sentinel in comparison)









Number of sentinel facilities for weekly reporting		
Types of sentinels	Number of sentinels	Sentinels having reported
Pediatric	264	264
Influenza	419	418
Ophthalmic	39	37
Specially-designated	25	24

Tokyo Metropolitan Government  
**Infectious Disease Surveillance Center**