
INFECTIOUS DISEASES WEEKLY REPORT

TOKYO IDWR

Tokyo Metropolitan Infectious Disease Surveillance Center

7 February 2013 / Number 5

Surveillance System in Tokyo, Japan

The infectious diseases which all physicians must report

All physicians must report to health centers the incidence of the diseases which are shown at page one. Health centers electronically report the individual cases to Tokyo Metropolitan Infectious Disease Surveillance Center.

The infectious diseases required to be reported by the sentinels

The numbers of patients who visit the sentinel clinics or hospitals during a week are reported to health centers in Tokyo. And they electronically report the numbers to Tokyo Metropolitan Infectious Disease Surveillance Center. We have about 500 sentinel clinics and hospitals in Tokyo.

1st Week is early January and 52nd Week is end of December.

Tokyo Metropolitan Institute of Public Health

TEL:81-3-3363-3213 FAX:81-3-5332-7365

e-mail:idsc@tokyo-eiken.go.jp

URL:idsc.tokyo-eiken.go.jp/

Number of patients with the diseases which all physicians must report

Category	Diseases	Tokyo				Japan		
		2nd	3rd	4th	5th	Cum 2013	5th	Cum 2013
I	Ebola hemorrhagic fever							
	Crimean-Congo hemorrhagic fever							
	Smallpox							
	South American hemorrhagic fever							
	Plague							
	Marburg disease							
	Lassa fever							
II	Acute poliomyelitis							
	Tuberculosis	87	64	84	70	317	322	1,824
	Diphtheria							
	Severe Acute Respiratory Syndrome(SARS)							
	Avian influenza H5N1							
III	Cholera							
	Shigellosis		1		2	3	3	10
	Enterohemorrhagic Escherichia coli infection		1	1		3	12	49
	Typhoid fever	1	1		1	3	1	6
	Paratyphoid fever	1	1			2	1	5
IV	Hepatitis E	2	1		1	5	1	4
	West Nile fever							
	Hepatitis A			1		1		7
	Echinococcosis							1
	Yellow fever							
	Psittacosis							
	Omsk hemorrhagic fever							
	Relapsing fever							
	Kyasanur forest disease							
	Q fever							
	Rabies							
	Coccidioidomycosis							
	Monkeypox							
	Hemorrhagic fever with renal syndrome							
	Western equine encephalitis							
	Tick-borne encephalitis							
	Anthrax							
	Chikungunya fever					1		1
	Scrub typhus(Tsutsugamushi disease)						7	26
	Dengue fever	2				2		10
	Eastern equine encephalitis							
	Avian influenza (excluding H5N1)							
	Nipah virus infection							
	Japanese spotted fever							1
	Japanese encephalitis							
	Hantavirus pulmonary syndrome							
	Herpes B virus infection							
	Glanders							
	Brucellosis							
	Venezuelan equine encephalitis							
	Hendra virus infection							
	Epidemic typhus							
Botulism								
Malaria				1	1	1	5	
Tularemia								
Lyme disease								
Lyssavirus infection(excluding rabies)								
Rift valley fever								
Melioidosis								
Legionellosis	4	2	1		8	13	73	
Leptospirosis							1	
Rocky mountain spotted fever								

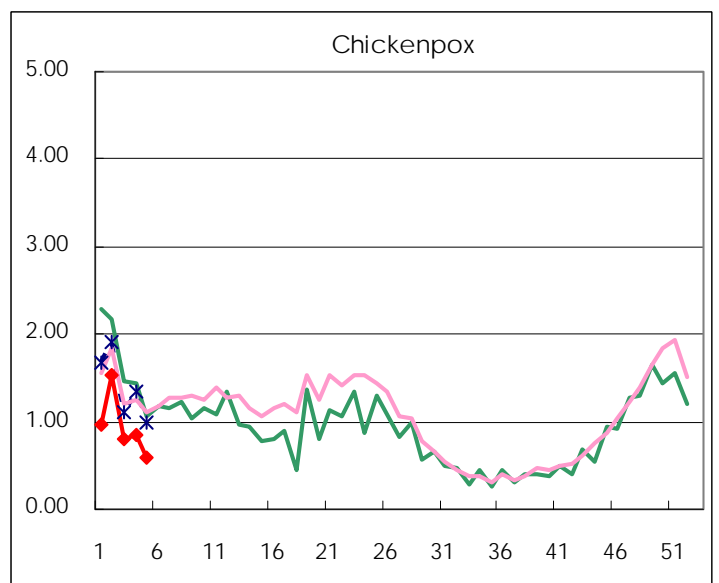
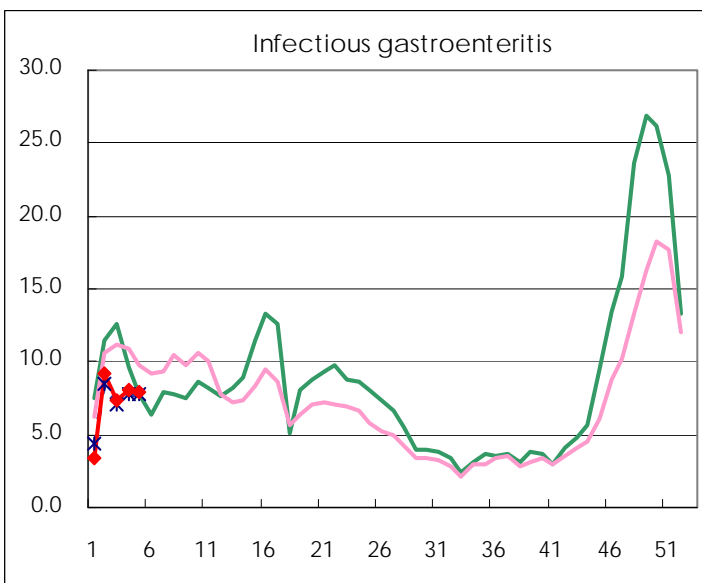
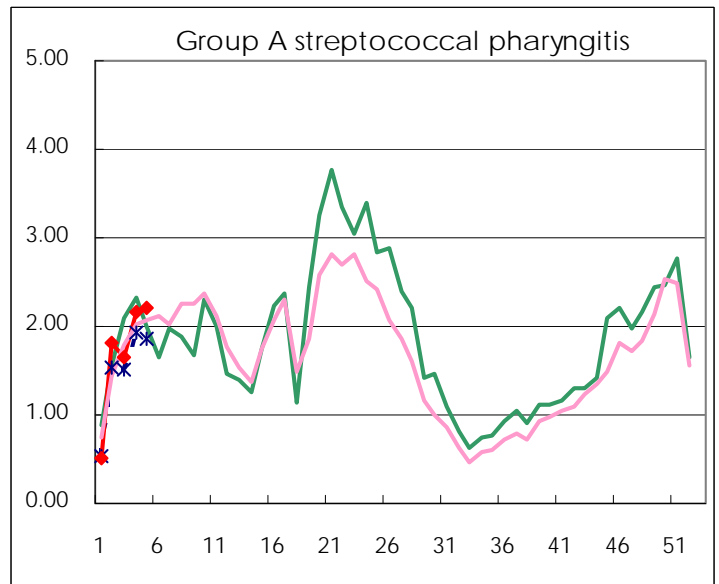
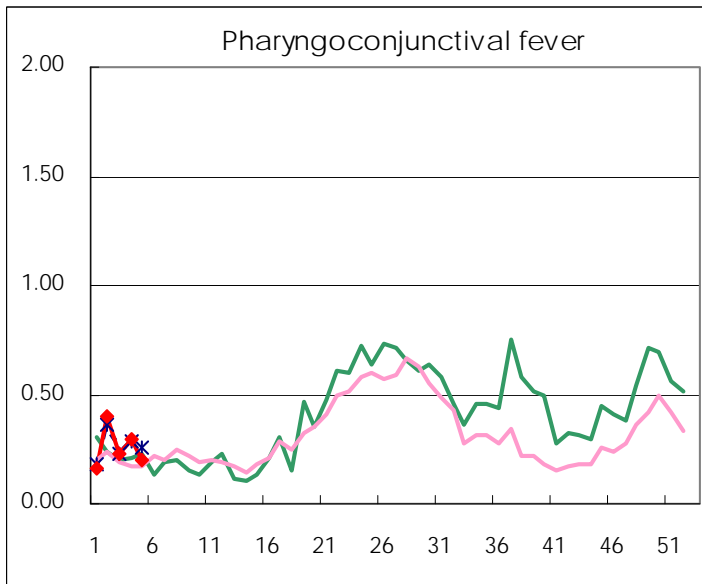
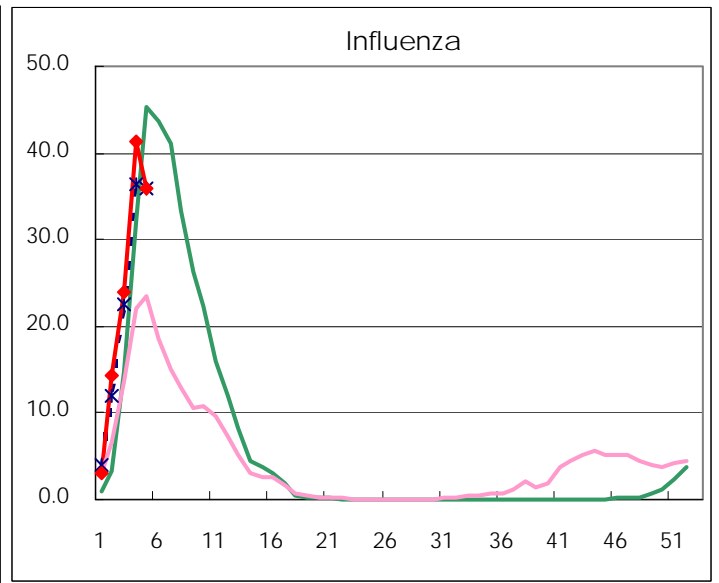
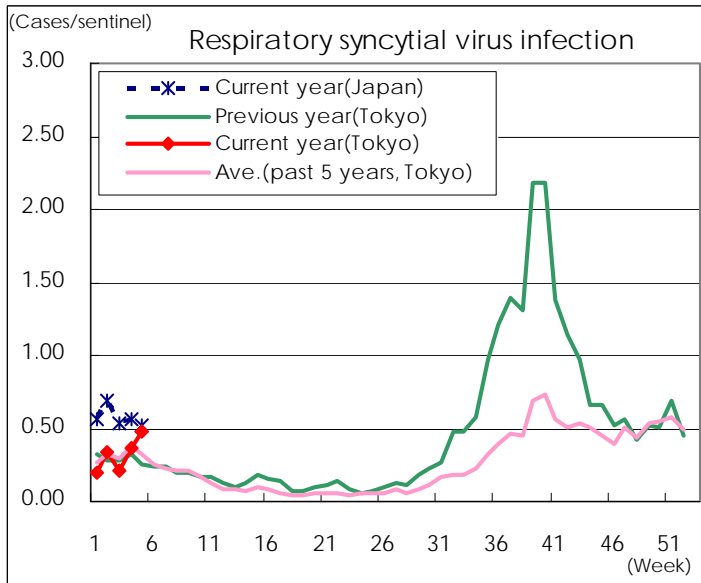
Category	Diseases	Tokyo				Japan		
		2nd	3rd	4th	5th	Cum 2013	5th	Cum 2013
V	Amebiasis	2	2	6	4	15	11	74
	Viral hepatitis(excluding hepatitis A and E)	2	2		3	7		14
	Acute encephalitis(excluding JE and WNE)	3		2	2	7	8	52
	Cryptosporidiosis							
	Creutzfeldt-Jakob disease		1		1	2	3	12
	Severe invasive streptococcal infections(TSLS)	1		1	1	3	1	18
	Acquired immunodeficiency syndrome (AIDS)	11	9	6	10	39	21	105
	Giardiasis			1		1	1	5
	Meningococcal meningitis							
	Congenital rubella syndrome							1
	Syphilis	7	8	7	3	28	9	75
	Tetanus	1				2	1	6
	Vancomycin-resistant S. aureus infection							
	Vancomycin-resistant Enterococcus infection	1				1		10
	Rubella	41	37	43	40	168	59	339
Measles	1		4		5	7	23	

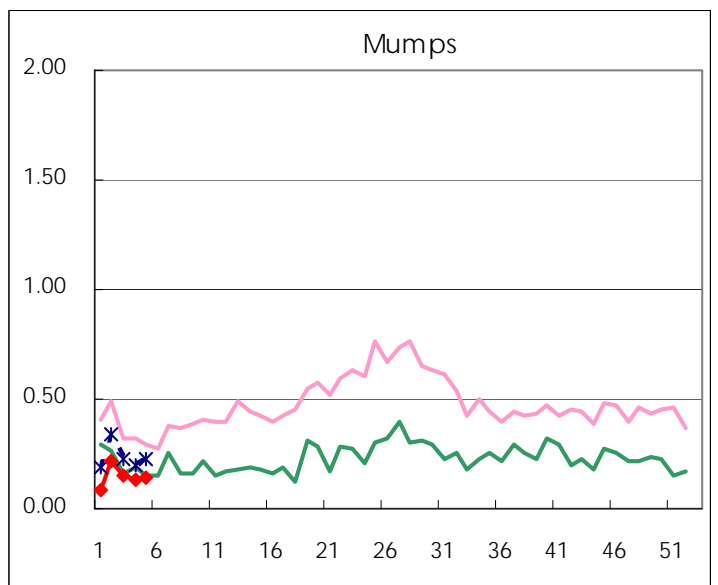
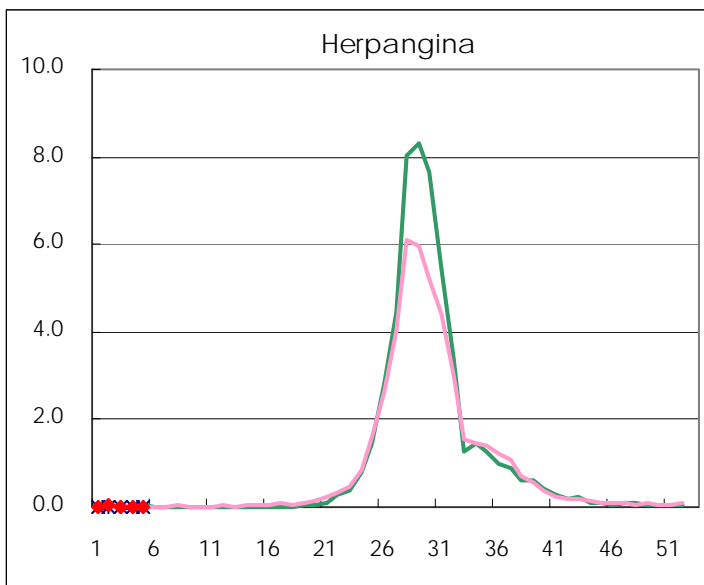
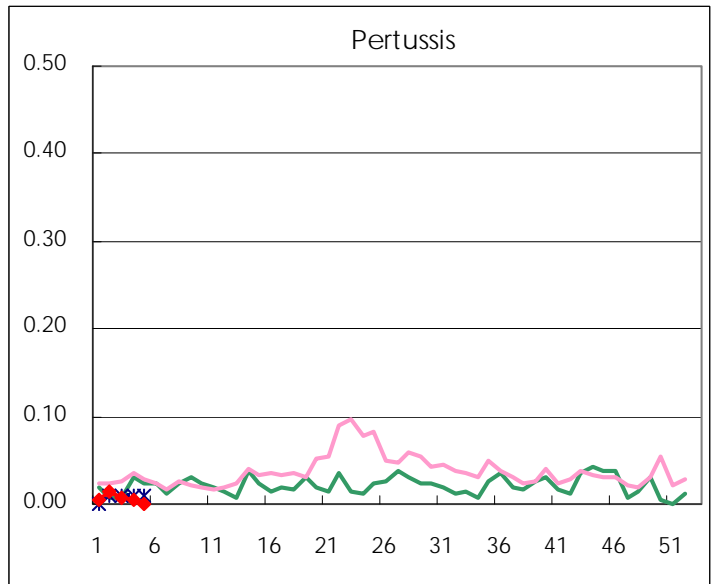
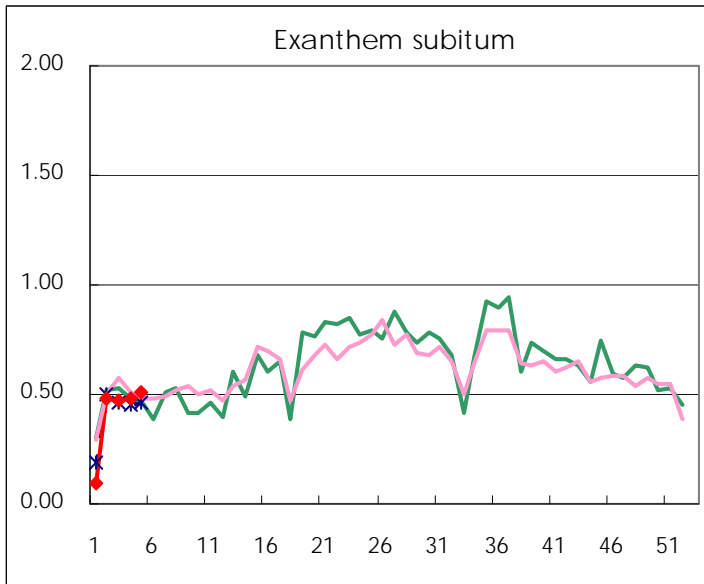
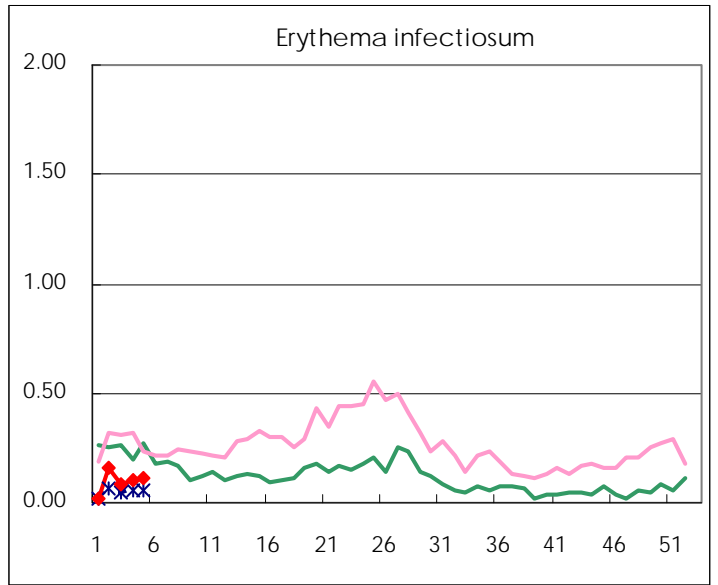
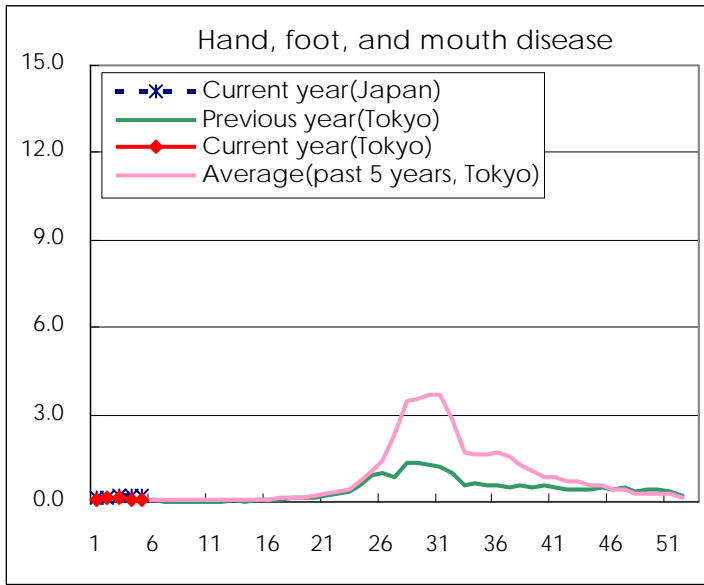
Number of patients with the diseases to be reported
by the designated clinics and hospitals

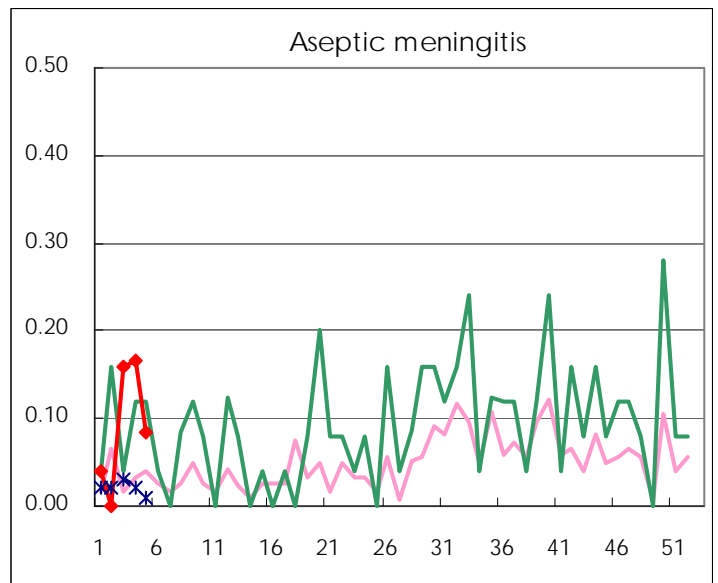
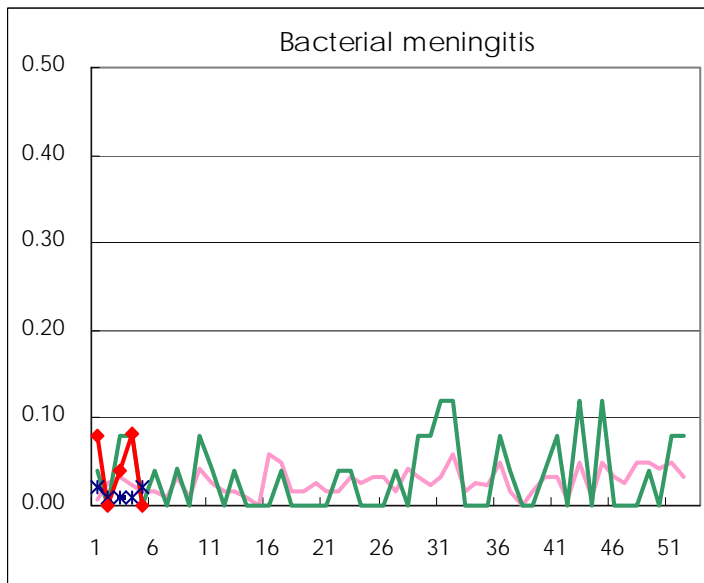
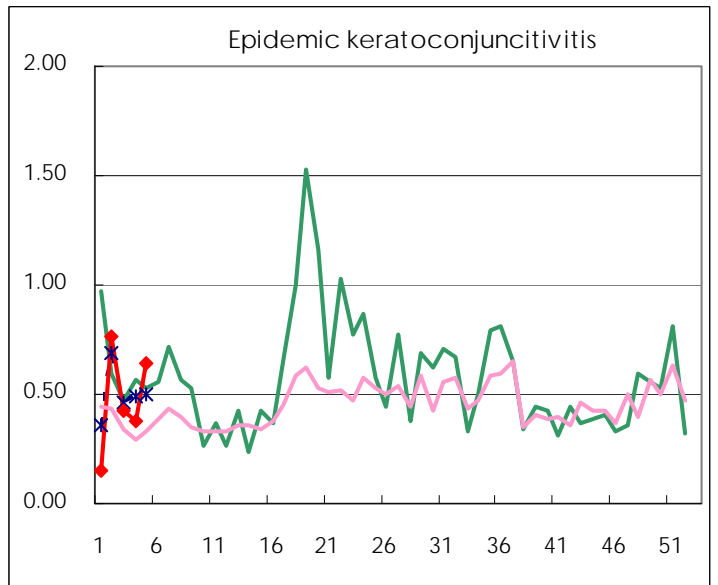
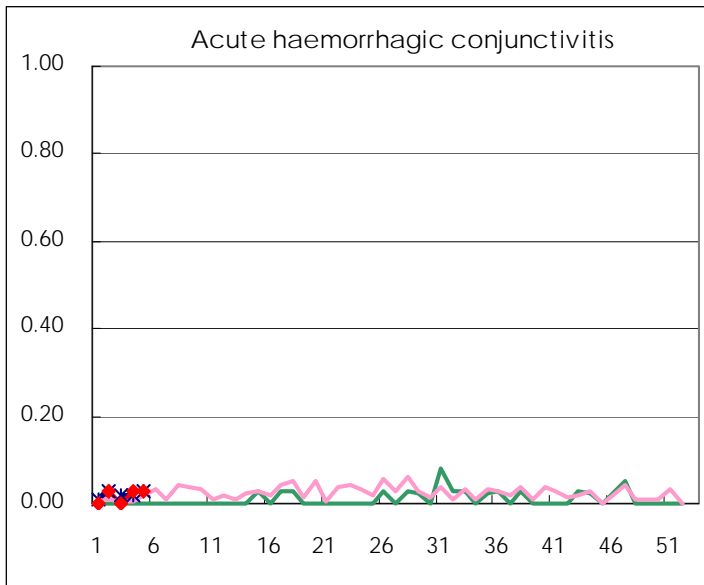
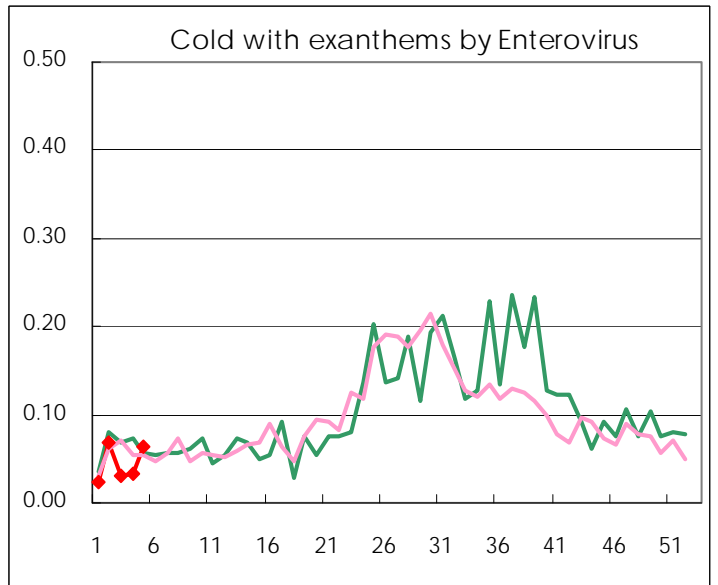
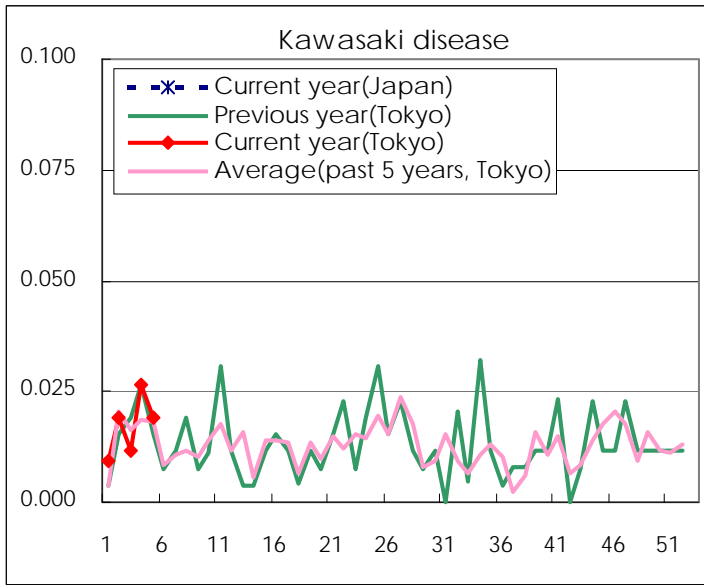
Diseases	Tokyo				
	2nd	3rd	4th	5th	/sentinel
Respiratory syncytial virus infection	90	57	98	125	0.47
Pharyngoconjunctival fever	104	61	78	54	0.20
Group A streptococcal pharyngitis	475	436	570	584	2.21
Infectious gastroenteritis	2,425	1,920	2,148	2,101	7.96
Chickenpox	406	209	226	155	0.59
Hand, foot, and mouth disease	40	30	22	24	0.09
Erythema infectiosum	42	23	27	30	0.11
Exanthem subitum	127	125	126	134	0.51
Pertussis	4	2	1		
Herpangina	7	4	1	3	0.01
Mumps	57	39	34	38	0.14
Kawasaki disease	5	3	7	5	0.02
Cold with exanthems by Enterovirus	18	8	9	17	0.06
Influenza	5,922	9,996	17,259	15,006	35.90
Acute hemorrhagic conjunctivitis	1		1	1	0.03
Epidemic keratoconjunctivitis	29	16	14	23	0.64
Bacterial meningitis		1	2		
Aseptic meningitis		4	4	2	0.08
Mycoplasma pneumonia	12	16	12	13	0.54
Chlamydial pneumonia (excluding psittacosis)	2			2	0.08
Influenza-Associated Hospitalizations	42	71	101	79	3.29

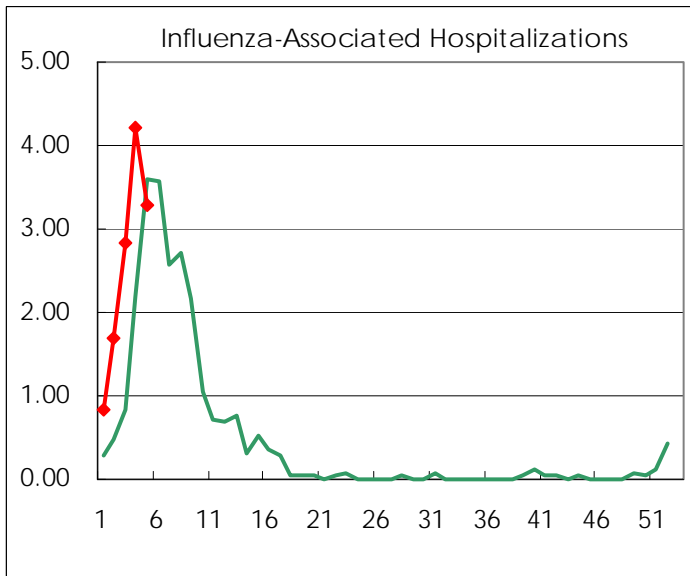
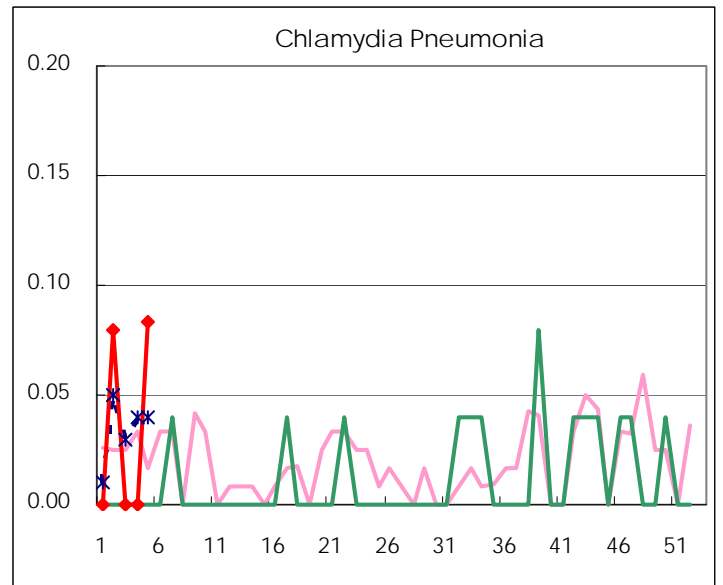
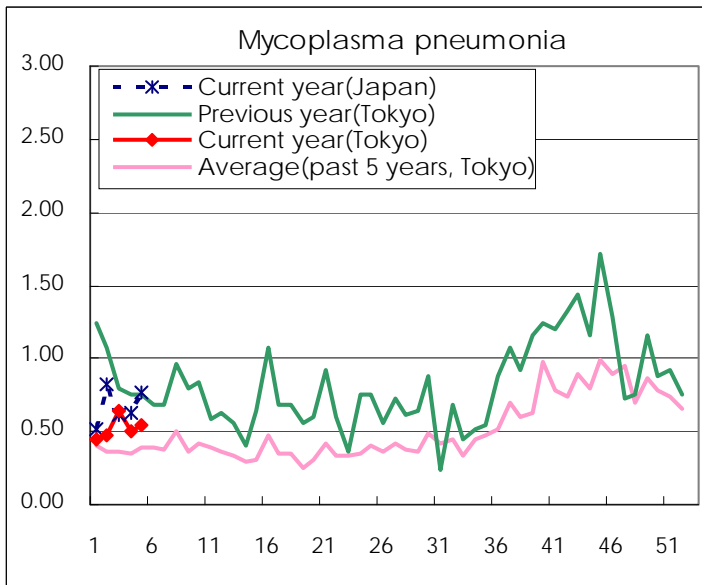
(Blank means 0.)

Disease Trend Graph (weekly reported cases per sentinel in comparison)









Number of sentinel facilities for weekly reporting		
Types of sentinels	Number of sentinels	Sentinels having reported
Pediatric	264	264
Influenza	419	418
Ophthalmic	39	36
Specially-designated	25	24

Tokyo Metropolitan Government
Infectious Disease Surveillance Center