

---

INFECTIOUS DISEASES WEEKLY REPORT

# TOKYO IDWR

Tokyo Metropolitan Infectious Disease Surveillance Center

## 28 February 2013 / Number 8

### Surveillance System in Tokyo, Japan

The infectious diseases which all physicians must report

All physicians must report to health centers the incidence of the diseases which are shown at page one. Health centers electronically report the individual cases to Tokyo Metropolitan Infectious Disease Surveillance Center.

The infectious diseases required to be reported by the sentinels

The numbers of patients who visit the sentinel clinics or hospitals during a week are reported to health centers in Tokyo. And they electronically report the numbers to Tokyo Metropolitan Infectious Disease Surveillance Center. We have about 500 sentinel clinics and hospitals in Tokyo.

1st Week is early January and 52nd Week is end of December.

Tokyo Metropolitan Institute of Public Health

TEL:81-3-3363-3213 FAX:81-3-5332-7365

e-mail:[idsc@tokyo-eiken.go.jp](mailto:idsc@tokyo-eiken.go.jp)

URL:[idsc.tokyo-eiken.go.jp/](http://idsc.tokyo-eiken.go.jp/)

---

## Number of patients with the diseases which all physicians must report

Category	Diseases	Tokyo				Japan		
		5th	6th	7th	8th	Cum 2013	8th	Cum 2013
I	Ebola hemorrhagic fever							
	Crimean-Congo hemorrhagic fever							
	Smallpox							
	South American hemorrhagic fever							
	Plague							
	Marburg disease							
	Lassa fever							
II	Acute poliomyelitis							
	Tuberculosis	86	74	49	68	529	359	3,259
	Diphtheria							
	Severe Acute Respiratory Syndrome(SARS)							
III	Avian influenza H5N1							
	Cholera							
	Shigellosis	2				3	2	13
	Enterohemorrhagic Escherichia coli infection				1	4	17	94
	Typhoid fever	1				3	2	8
Paratyphoid fever					2		6	
IV	Hepatitis E	1				6	2	16
	West Nile fever							
	Hepatitis A				1	2	3	19
	Echinococcosis							2
	Yellow fever							
	Psittacosis					2		
	Omsk hemorrhagic fever							
	Relapsing fever							
	Kyasanur forest disease							
	Q fever							
	Rabies							
	Coccidioidomycosis							
	Monkeypox							
	Hemorrhagic fever with renal syndrome							
	Western equine encephalitis							
	Tick-borne encephalitis							
	Anthrax							
	Chikungunya fever					1		1
	Scrub typhus(Tsutsugamushi disease)						1	30
	Dengue fever					2	1	14
	Eastern equine encephalitis							
	Avian influenza (excluding H5N1)							
	Nipah virus infection							
	Japanese spotted fever							1
	Japanese encephalitis							
	Hantavirus pulmonary syndrome							
	Herpes B virus infection							
	Glanders							
	Brucellosis							
	Venezuelan equine encephalitis							
	Hendra virus infection							
Epidemic typhus								
Botulism								
Malaria	1				2	3	2	11
Tularemia								
Lyme disease								
Lyssavirus infection(excluding rabies)								
Rift valley fever								
Melioidosis								
Legionellosis		3			2	13	10	111
Leptospirosis								1
Rocky mountain spotted fever								

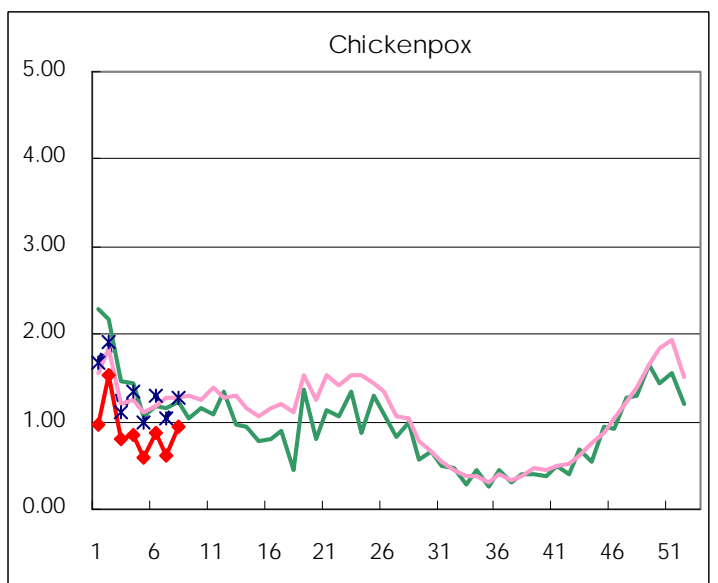
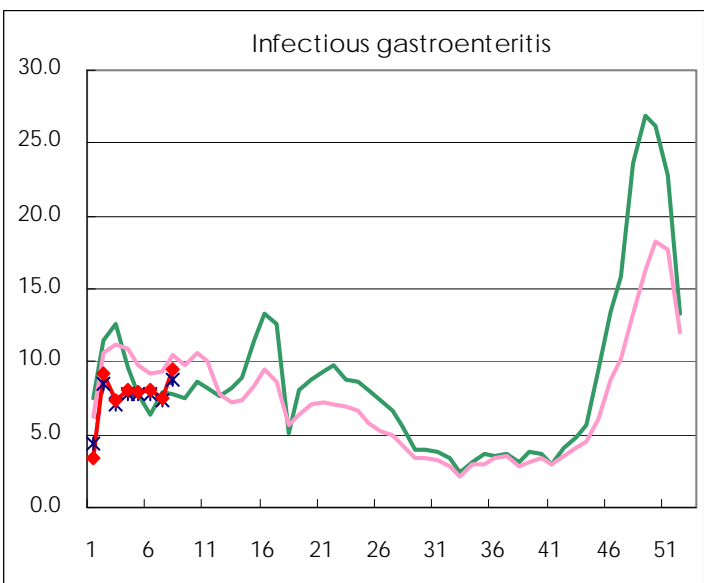
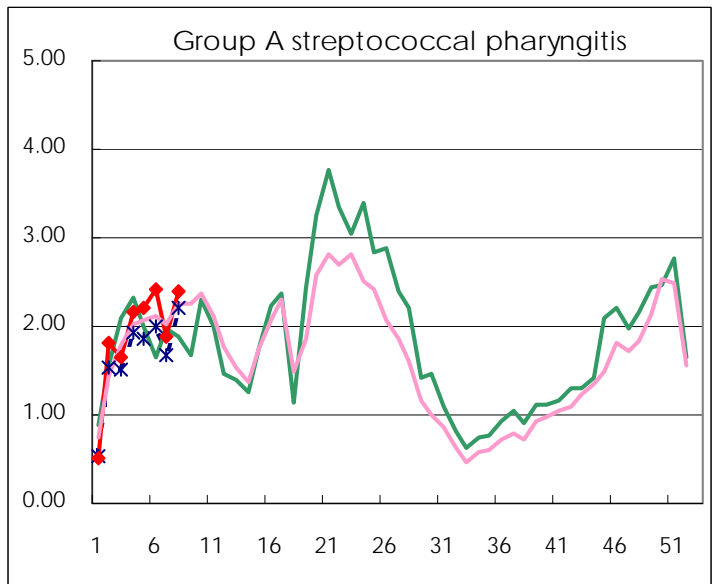
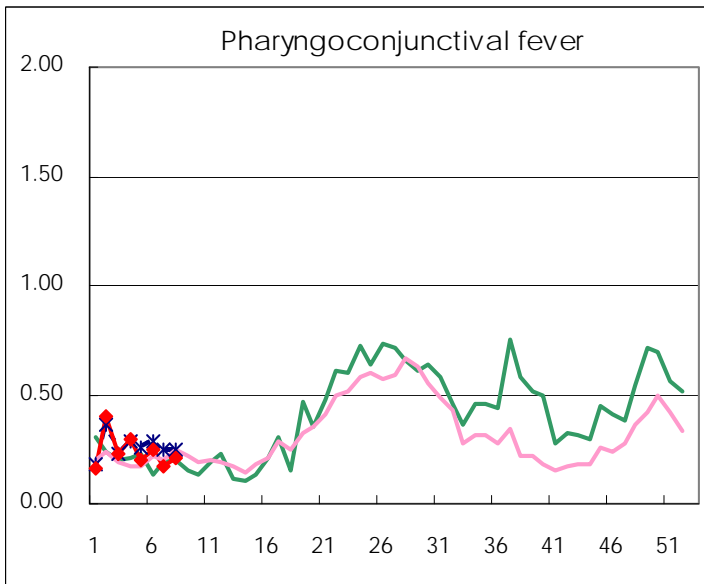
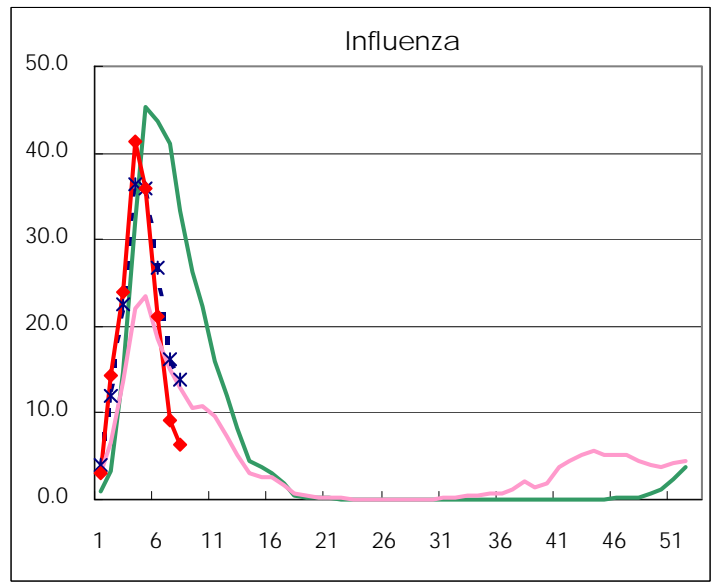
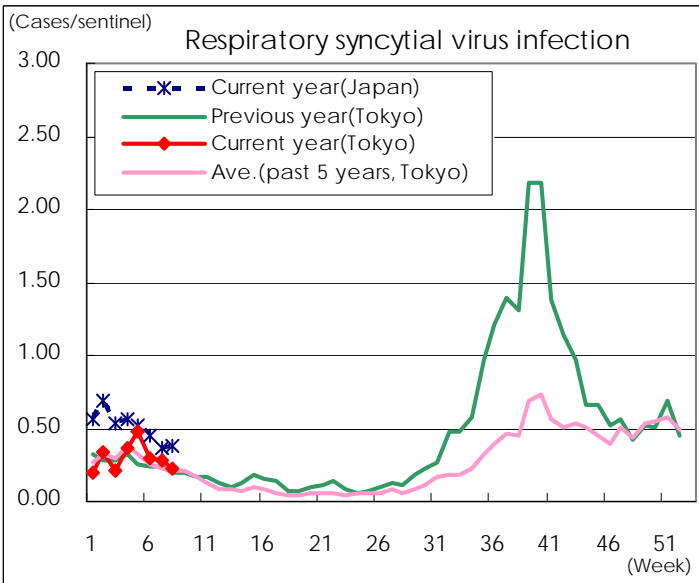
Category	Diseases	Tokyo				Cum 2013	Japan	
		5th	6th	7th	8th		8th	Cum 2013
V	Amebiasis	4	4	2	5	26	11	129
	Viral hepatitis(excluding hepatitis A and E)	3		1	2	10	6	25
	Acute encephalitis(excluding JE and WNE)	2				7	2	78
	Cryptosporidiosis							
	Creutzfeldt-Jakob disease	1				2	3	20
	Severe invasive streptococcal infections(TSLS)	1	1		1	5	1	30
	Acquired immunodeficiency syndrome (AIDS)	10	5	9	7	60	15	170
	Giardiasis		1			2		7
	Meningococcal meningitis							
	Congenital rubella syndrome							1
	Syphilis	3	6	6	5	45	10	121
	Tetanus					2	2	11
	Vancomycin-resistant S. aureus infection							
	Vancomycin-resistant Enterococcus infection			1	2	4		18
	Rubella	41	90	101	133	502	219	1,029
	Measles		8		2	15	8	40

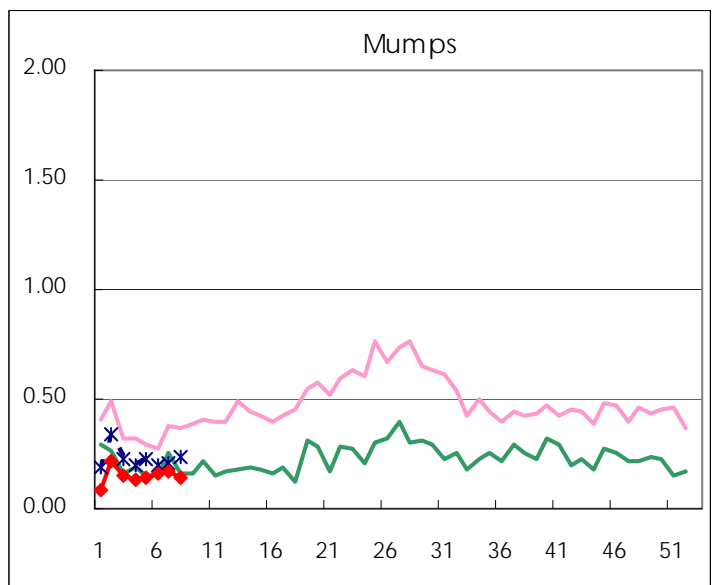
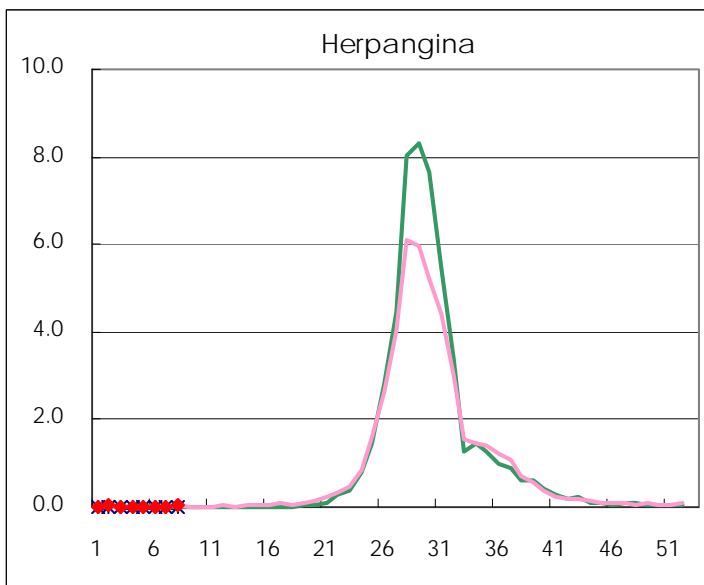
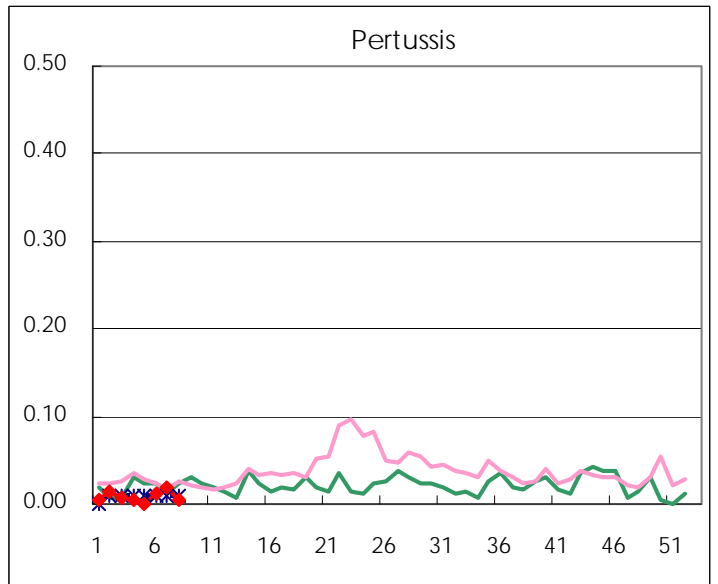
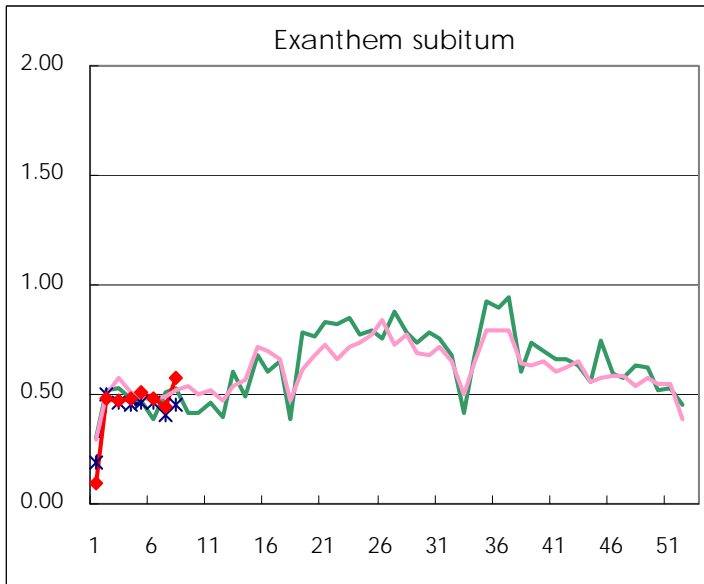
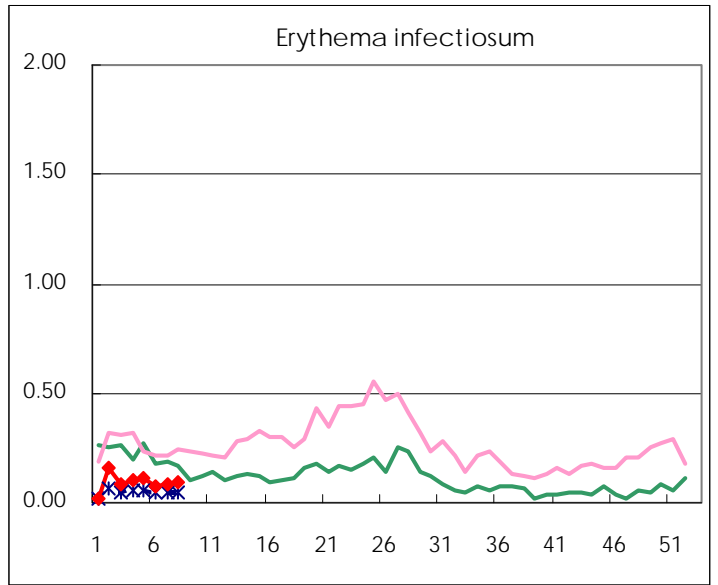
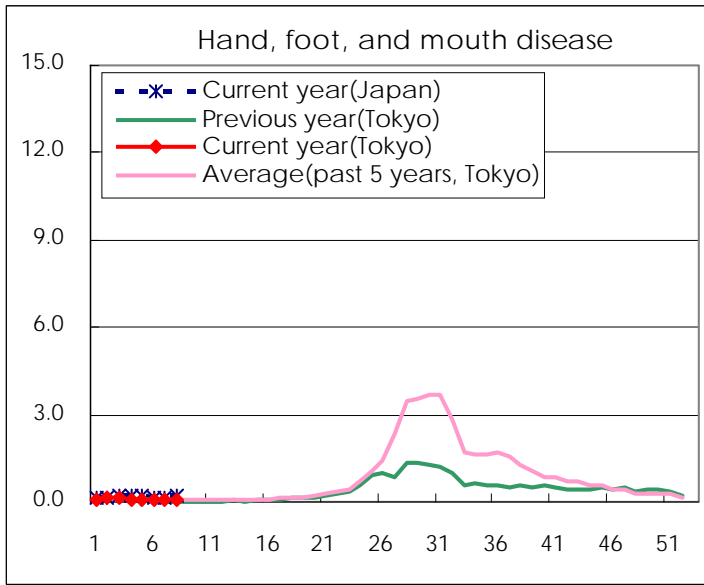
Number of patients with the diseases to be reported  
by the designated clinics and hospitals

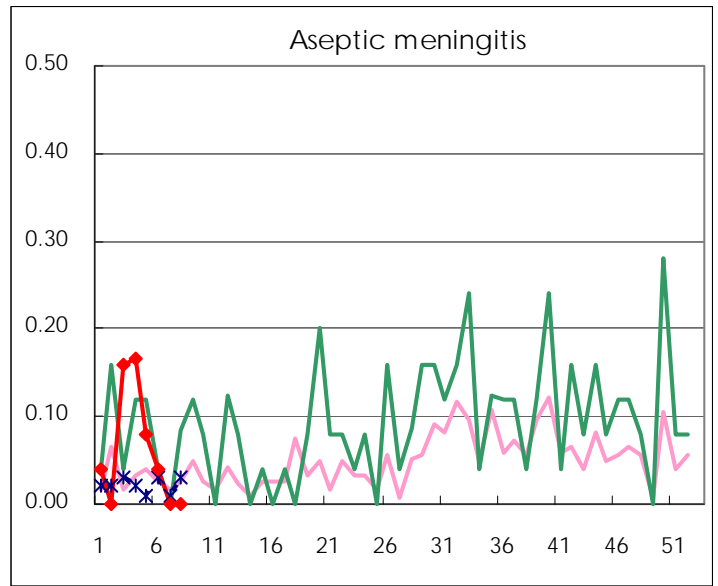
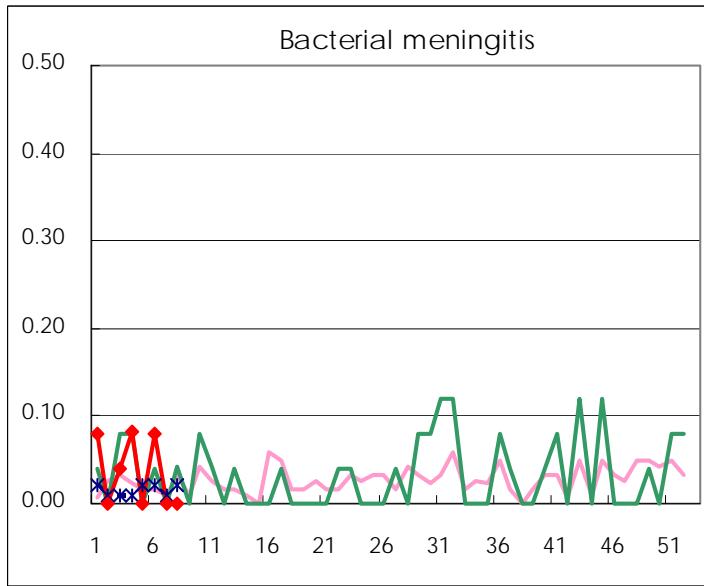
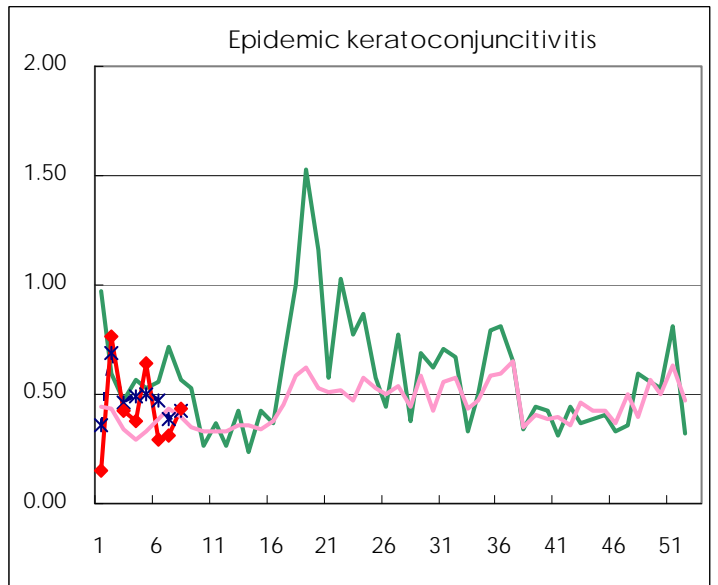
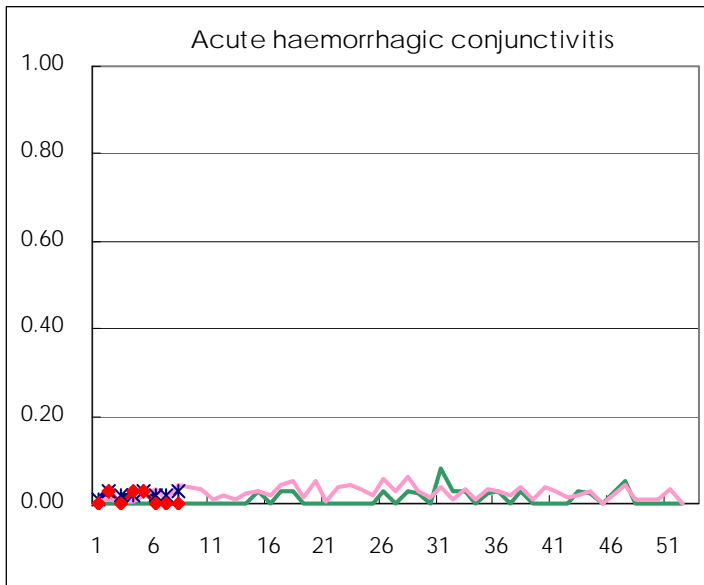
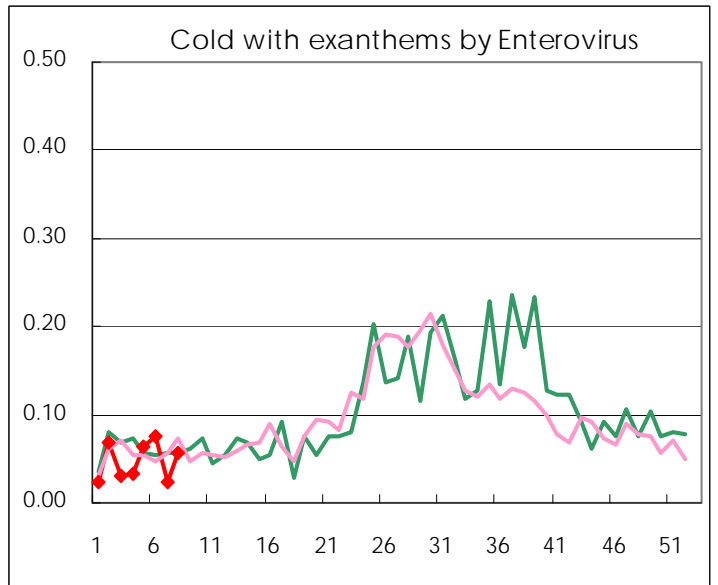
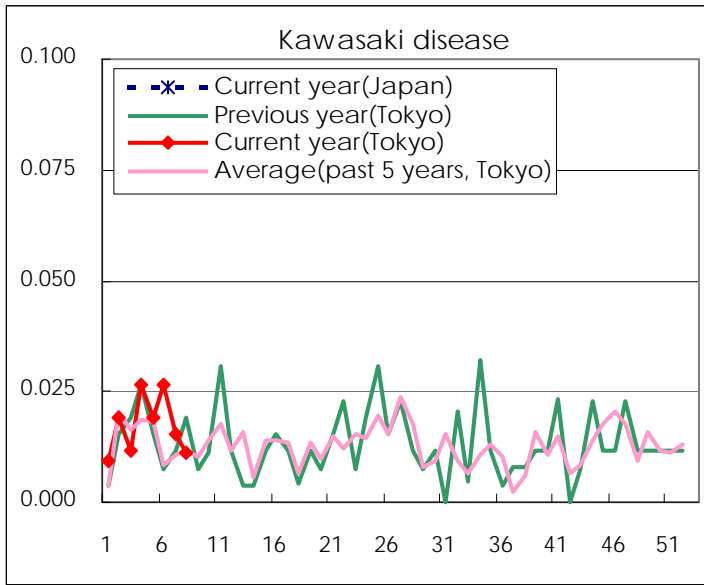
Diseases	Tokyo				
	5th	6th	7th	8th	/sentinel
Respiratory syncytial virus infection	125	79	73	59	0.22
Pharyngoconjunctival fever	54	66	46	55	0.21
Group A streptococcal pharyngitis	584	632	495	633	2.40
Infectious gastroenteritis	2,101	2,118	1,952	2,514	9.52
Chickenpox	155	230	159	250	0.95
Hand, foot, and mouth disease	24	22	14	14	0.05
Erythema infectiosum	30	19	21	26	0.10
Exanthem subitum	134	125	117	153	0.58
Pertussis		3	5	1	0.00
Herpangina	3	3	2	8	0.03
Mumps	38	41	44	38	0.14
Kawasaki disease	5	7	4	3	0.01
Cold with exanthems by Enterovirus	17	20	6	15	0.06
Influenza	15,028	8,804	3,802	2,611	6.26
Acute hemorrhagic conjunctivitis	1				
Epidemic keratoconjunctivitis	23	11	12	16	0.43
Bacterial meningitis		2			
Aseptic meningitis	2	1			
Mycoplasma pneumonia	13	16	5	5	0.21
Chlamydial pneumonia (excluding psittacosis)	2	2	1		
Influenza-Associated Hospitalizations	87	62	33	17	0.71

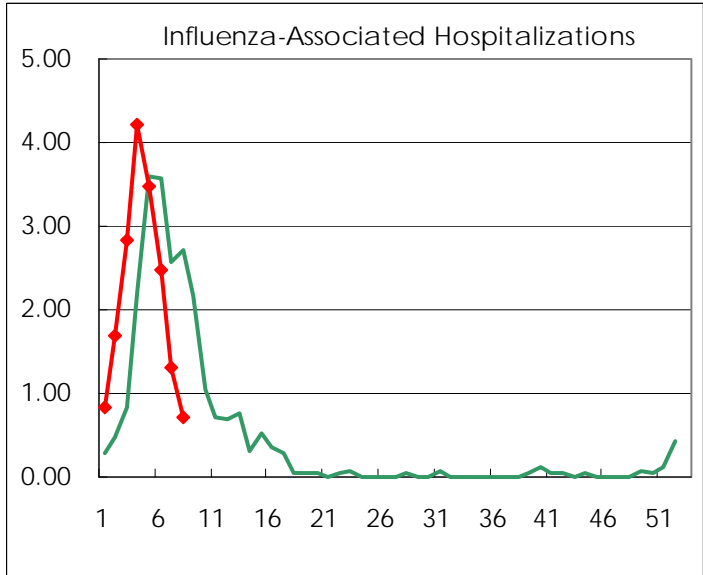
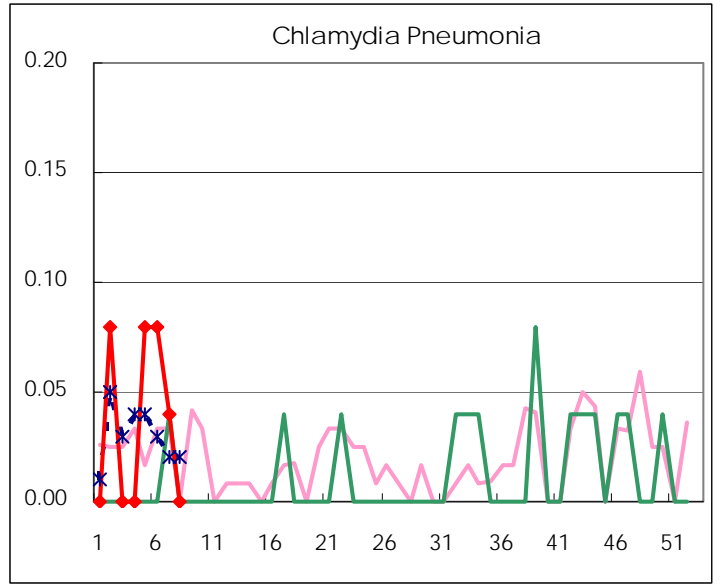
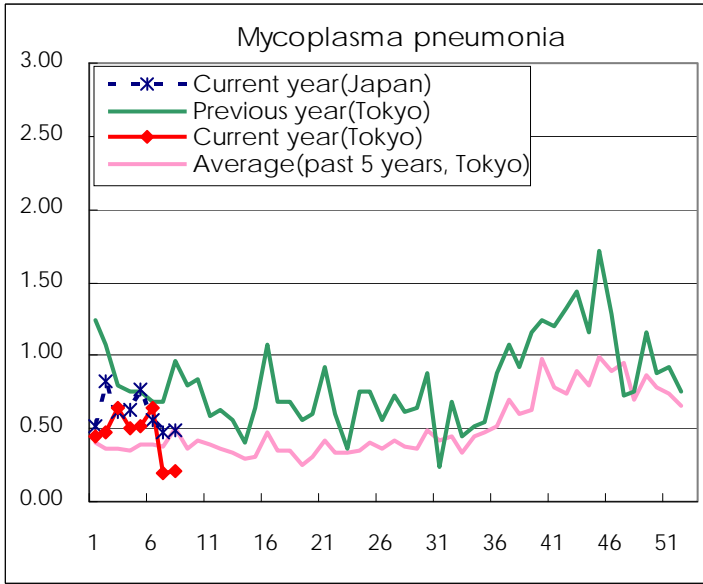
( Blank means 0. )

# Disease Trend Graph (weekly reported cases per sentinel in comparison)









Number of sentinel facilities for weekly reporting		
Types of sentinels	Number of sentinels	Sentinels having reported
Pediatric	264	264
Influenza	419	417
Ophthalmic	39	37
Specially-designated	25	24

Tokyo Metropolitan Government  
**Infectious Disease Surveillance Center**