
INFECTIOUS DISEASES WEEKLY REPORT

TOKYO IDWR

Tokyo Metropolitan Infectious Disease Surveillance Center

7 March 2013 / Number 9

Surveillance System in Tokyo, Japan

The infectious diseases which all physicians must report

All physicians must report to health centers the incidence of the diseases which are shown at page one. Health centers electronically report the individual cases to Tokyo Metropolitan Infectious Disease Surveillance Center.

The infectious diseases required to be reported by the sentinels

The numbers of patients who visit the sentinel clinics or hospitals during a week are reported to health centers in Tokyo. And they electronically report the numbers to Tokyo Metropolitan Infectious Disease Surveillance Center. We have about 500 sentinel clinics and hospitals in Tokyo.

1st Week is early January and 52nd Week is end of December.

Tokyo Metropolitan Institute of Public Health

TEL:81-3-3363-3213 FAX:81-3-5332-7365

e-mail:idsc@tokyo-eiken.go.jp

URL:idsc.tokyo-eiken.go.jp/

Number of patients with the diseases which all physicians must report

Category	Diseases	Tokyo				Japan		
		6th	7th	8th	9th	Cum 2013	9th	Cum 2013
I	Ebola hemorrhagic fever							
	Crimean-Congo hemorrhagic fever							
	Smallpox							
	South American hemorrhagic fever							
	Plague							
	Marburg disease							
	Lassa fever							
II	Acute poliomyelitis							
	Tuberculosis	77	53	71	74	615	348	3,818
	Diphtheria							
	Severe Acute Respiratory Syndrome(SARS)							
	Avian influenza H5N1							
III	Cholera							
	Shigellosis				1	4	2	15
	Enterohemorrhagic Escherichia coli infection			1	3	7	13	112
	Typhoid fever					3	2	10
	Paratyphoid fever					2		6
IV	Hepatitis E				3	9	3	20
	West Nile fever							
	Hepatitis A			1	1	3	2	23
	Echinococcosis							2
	Yellow fever							
	Psittacosis					2	1	1
	Omsk hemorrhagic fever							
	Relapsing fever							
	Kyasanur forest disease							
	Q fever							
	Rabies							
	Coccidioidomycosis							
	Monkeypox							
	Hemorrhagic fever with renal syndrome							
	Western equine encephalitis							
	Tick-borne encephalitis							
	Anthrax							
	Chikungunya fever					1	1	2
	Scrub typhus(Tsutsugamushi disease)							30
	Dengue fever				1	3	4	19
	Eastern equine encephalitis							
	Avian influenza (excluding H5N1)							
	Nipah virus infection							
	Japanese spotted fever							1
	Japanese encephalitis							
	Hantavirus pulmonary syndrome							
	Herpes B virus infection							
	Glanders							
	Brucellosis							
	Venezuelan equine encephalitis							
	Hendra virus infection							
Epidemic typhus								
Botulism								
Malaria			2		3		11	
Tularemia								
Lyme disease								
Lyssavirus infection(excluding rabies)								
Rift valley fever								
Melioidosis				1	1	2	2	
Legionellosis	3		2		13	6	120	
Leptospirosis							1	
Rocky mountain spotted fever								

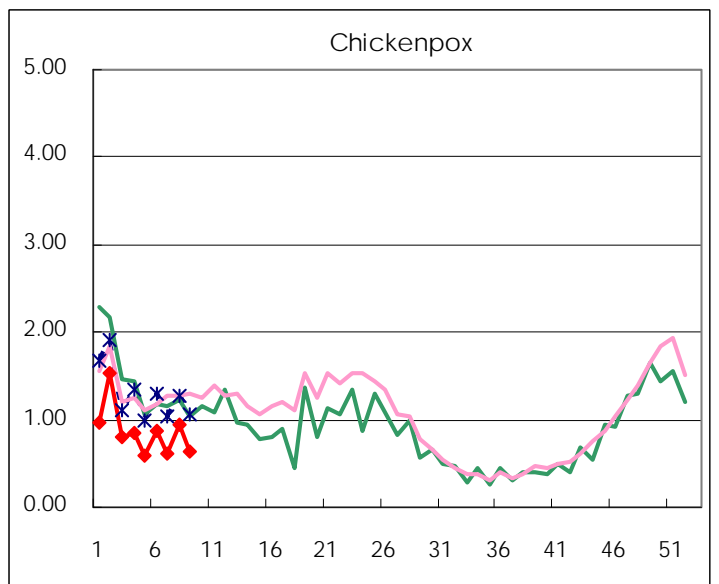
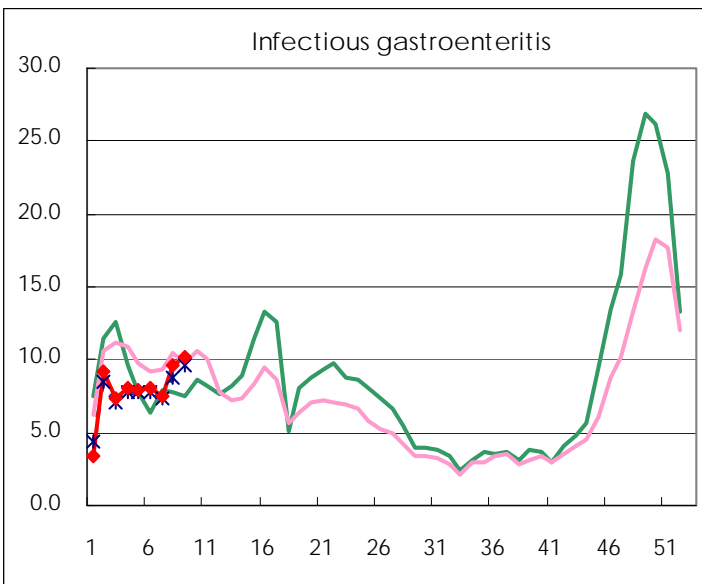
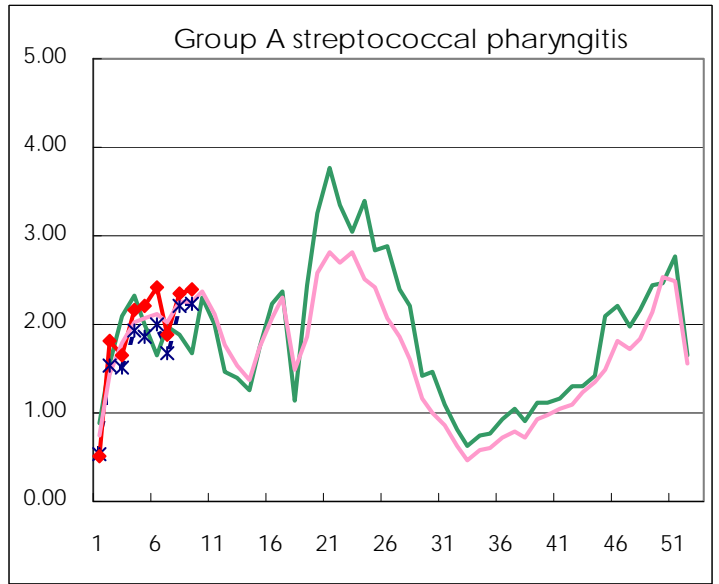
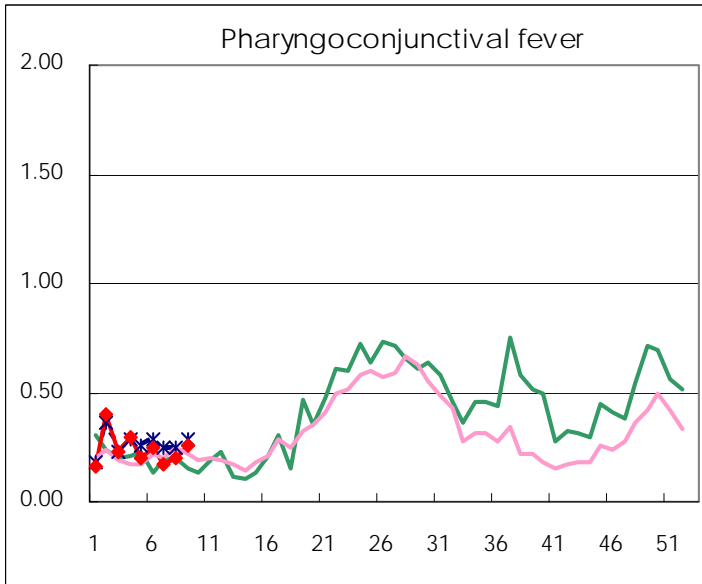
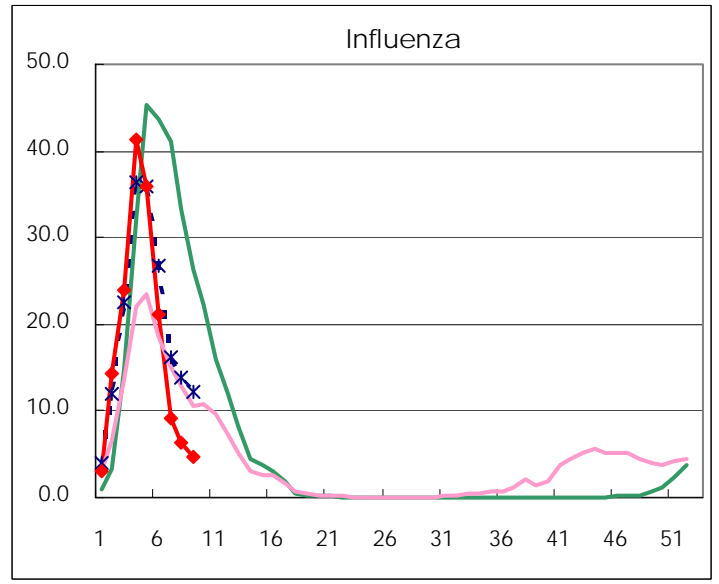
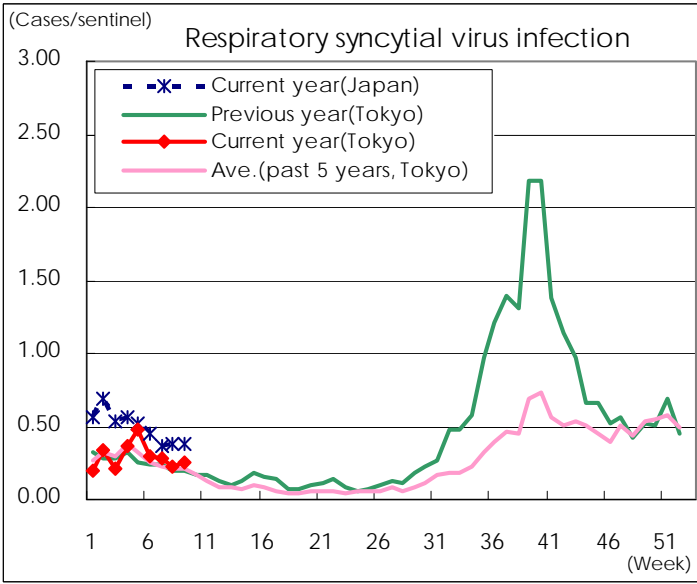
Category	Diseases	Tokyo				Cum 2013	Japan	
		6th	7th	8th	9th		9th	Cum 2013
V	Amebiasis	4	2	5	5	31	13	148
	Viral hepatitis(excluding hepatitis A and E)		1	2	1	11	5	34
	Acute encephalitis(excluding JE and WNE)			1	1	9	4	88
	Cryptosporidiosis							
	Creutzfeldt-Jakob disease					2	3	25
	Severe invasive streptococcal infections(TSLS)	1		1		5	2	34
	Acquired immunodeficiency syndrome (AIDS)	5	9	7	7	67	11	198
	Giardiasis	1				2	3	10
	Meningococcal meningitis							
	Congenital rubella syndrome							1
	Syphilis	6	6	5	4	49	11	144
	Tetanus					2		11
	Vancomycin-resistant S. aureus infection							
	Vancomycin-resistant Enterococcus infection		1	2		4	1	19
	Rubella	90	102	133	121	624	199	1,303
	Measles	8		2	2	17	12	49

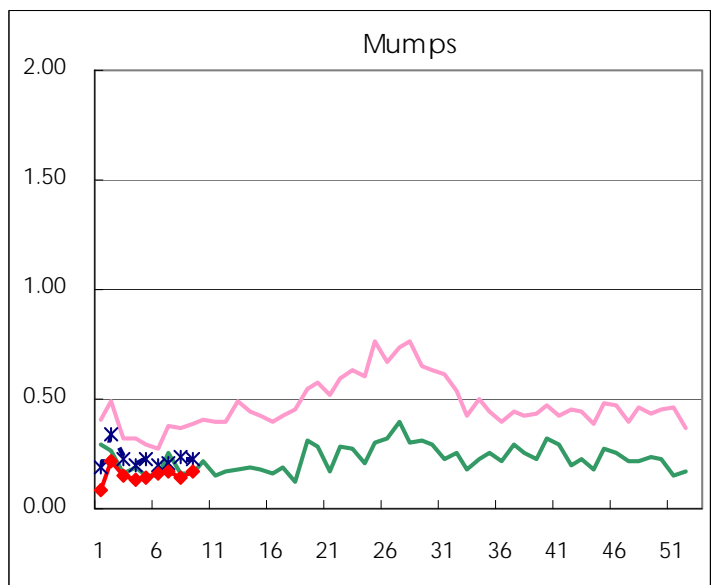
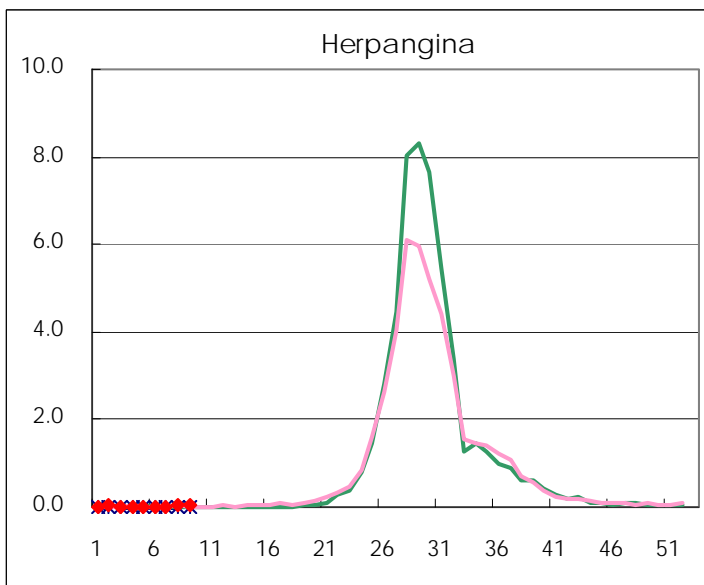
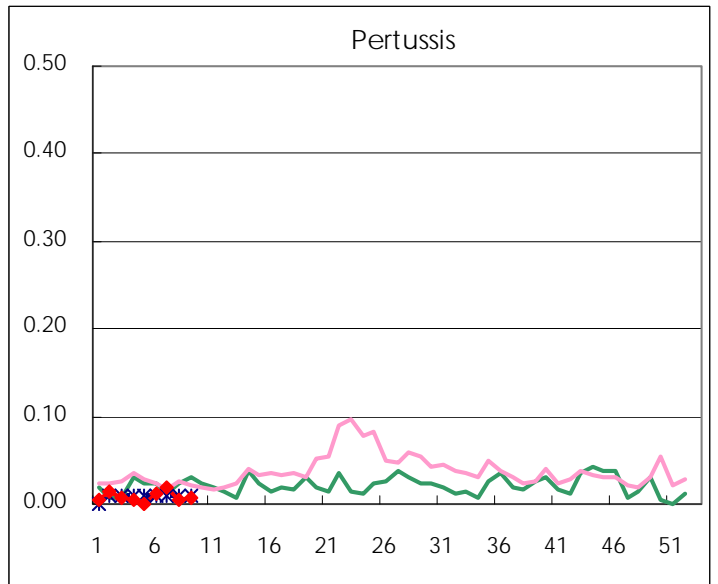
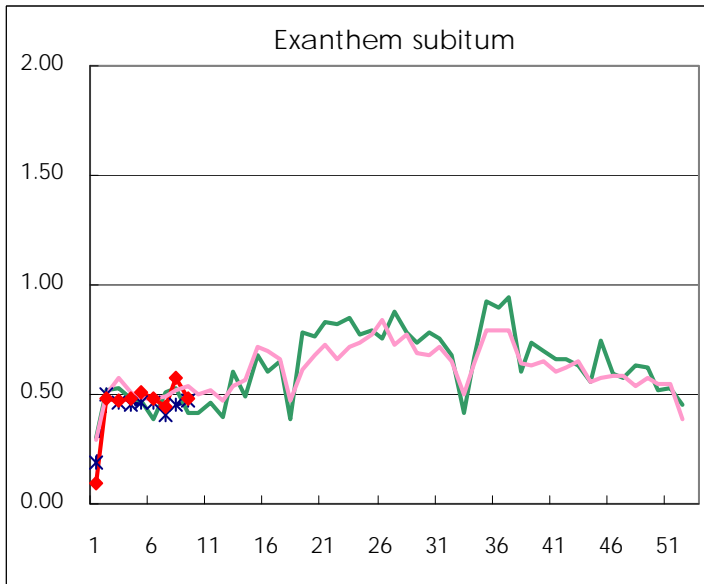
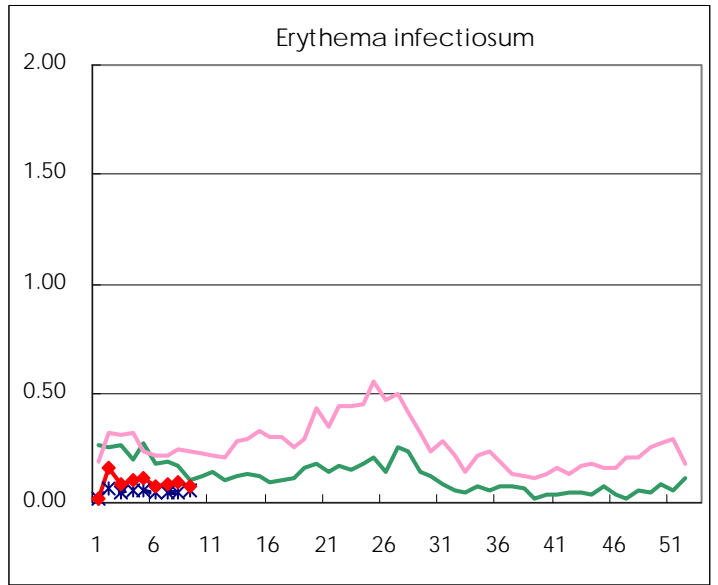
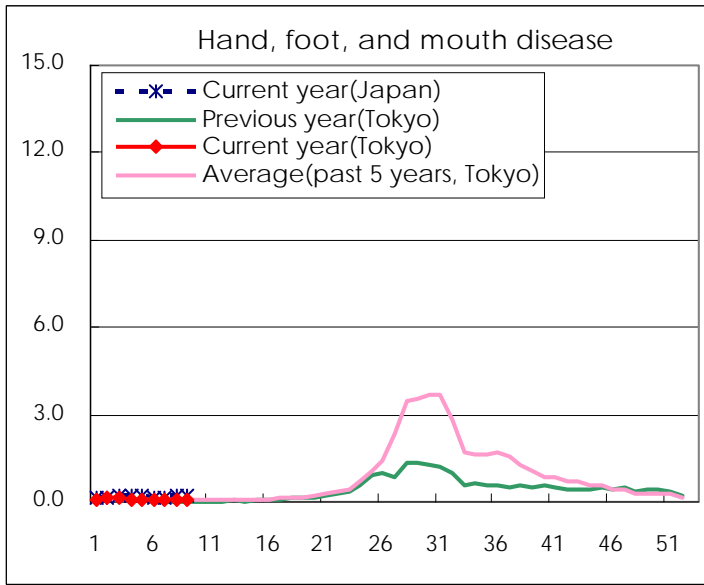
Number of patients with the diseases to be reported
by the designated clinics and hospitals

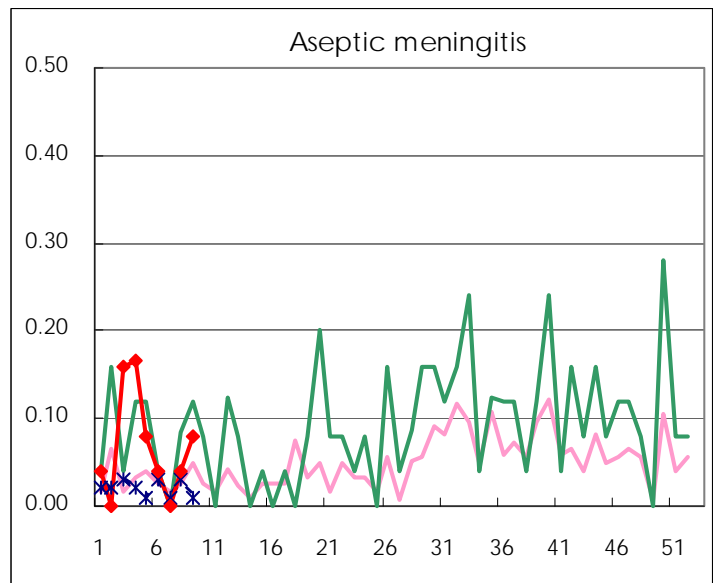
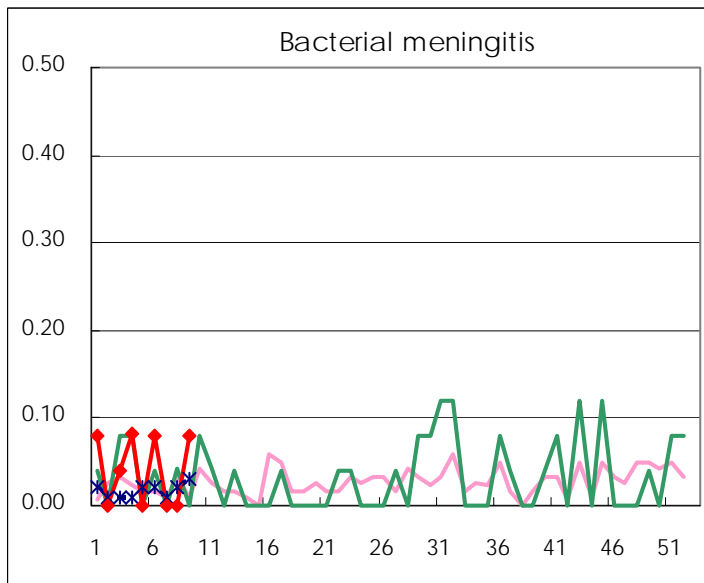
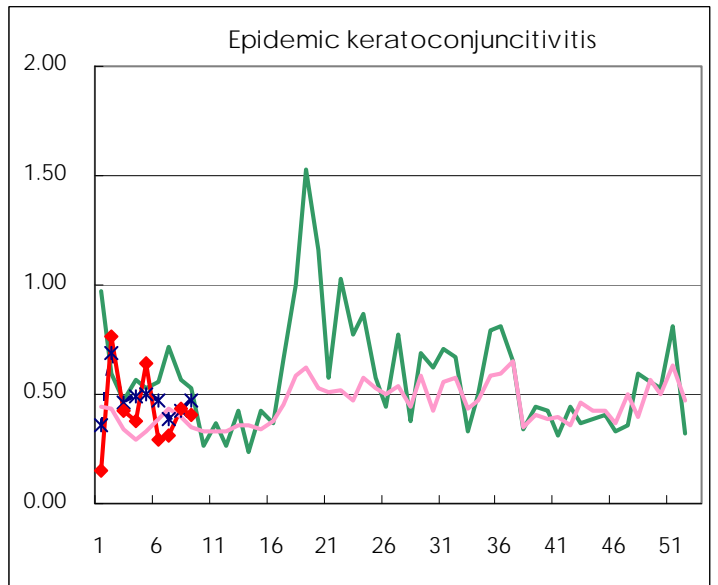
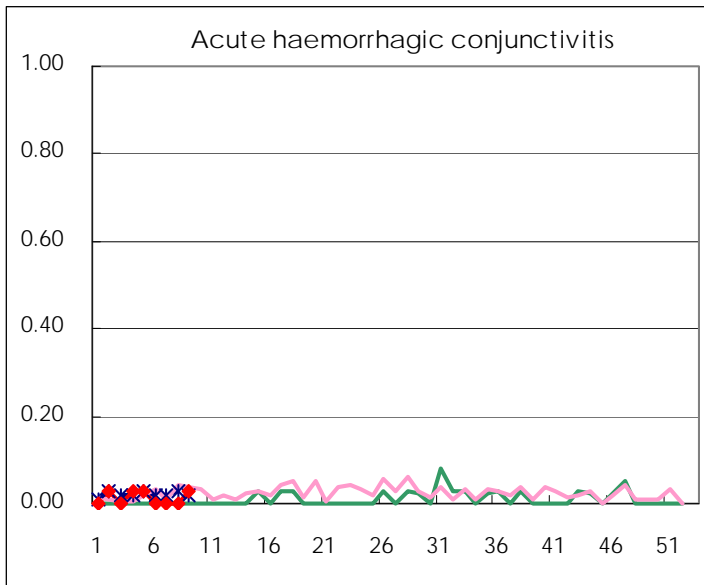
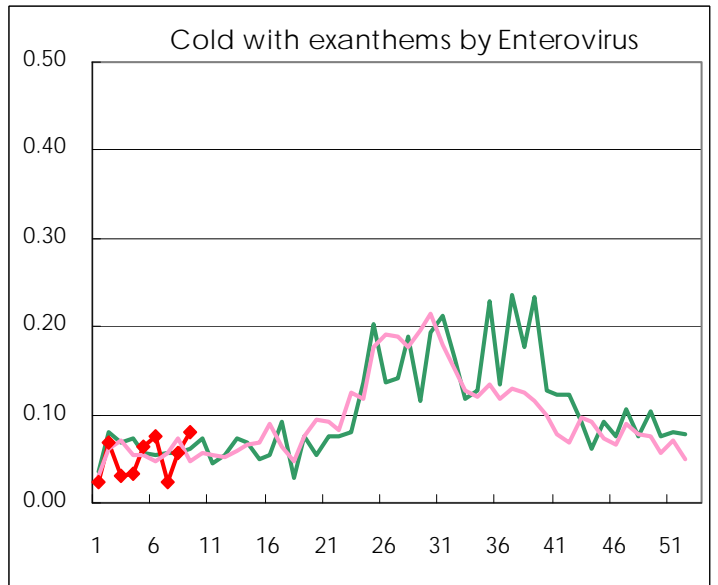
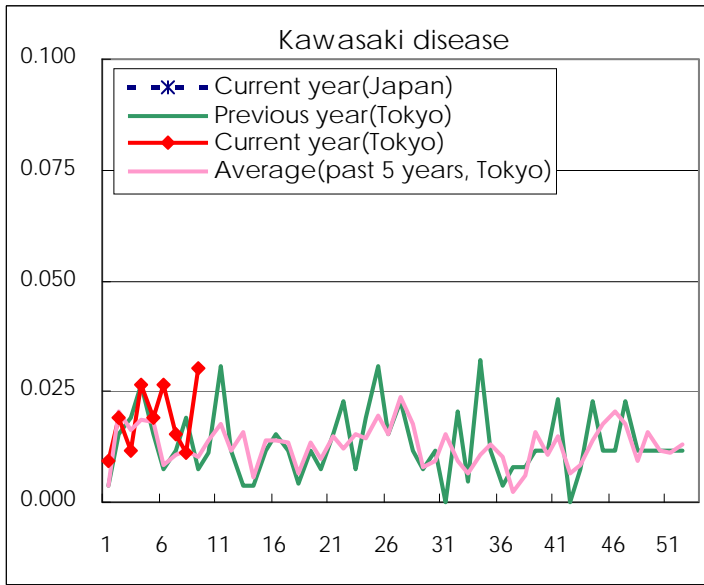
Diseases	Tokyo				
	6th	7th	8th	9th	/sentinel
Respiratory syncytial virus infection	79	73	59	67	0.25
Pharyngoconjunctival fever	66	46	53	67	0.25
Group A streptococcal pharyngitis	632	495	622	634	2.40
Infectious gastroenteritis	2,118	1,952	2,527	2,681	10.16
Chickenpox	230	159	250	168	0.64
Hand, foot, and mouth disease	22	14	14	24	0.09
Erythema infectiosum	19	21	26	21	0.08
Exanthem subitum	125	117	153	128	0.48
Pertussis	3	5	1	2	0.01
Herpangina	3	2	8	8	0.03
Mumps	41	44	38	46	0.17
Kawasaki disease	7	4	3	8	0.03
Cold with exanths by Enterovirus	20	6	15	21	0.08
Influenza	8,804	3,802	2,611	1,907	4.60
Acute hemorrhagic conjunctivitis				1	0.03
Epidemic keratoconjunctivitis	11	12	16	15	0.41
Bacterial meningitis	2			2	0.08
Aseptic meningitis	1		1	2	0.08
Mycoplasma pneumonia	16	5	6	10	0.40
Chlamydial pneumonia (excluding psittacosis)	2	1		3	0.12
Influenza-Associated Hospitalizations	62	33	18	17	0.68

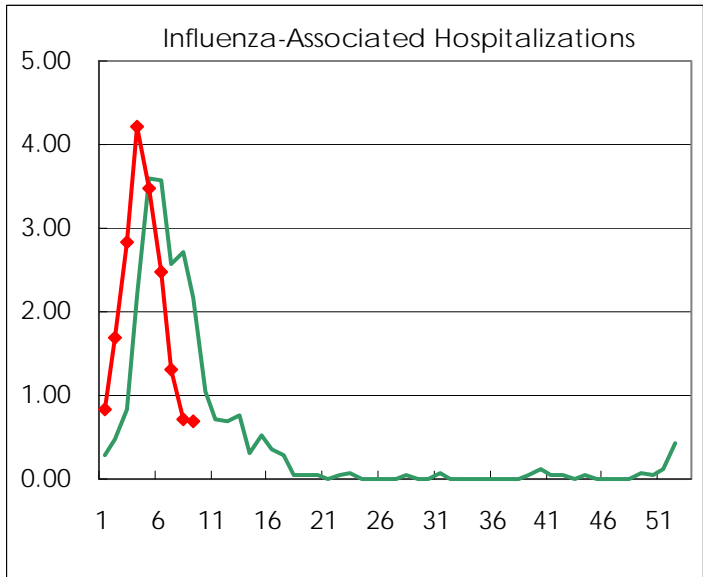
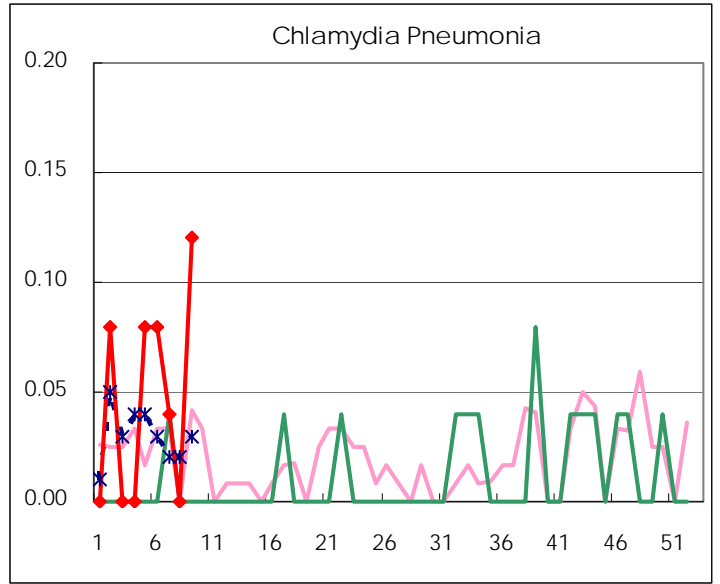
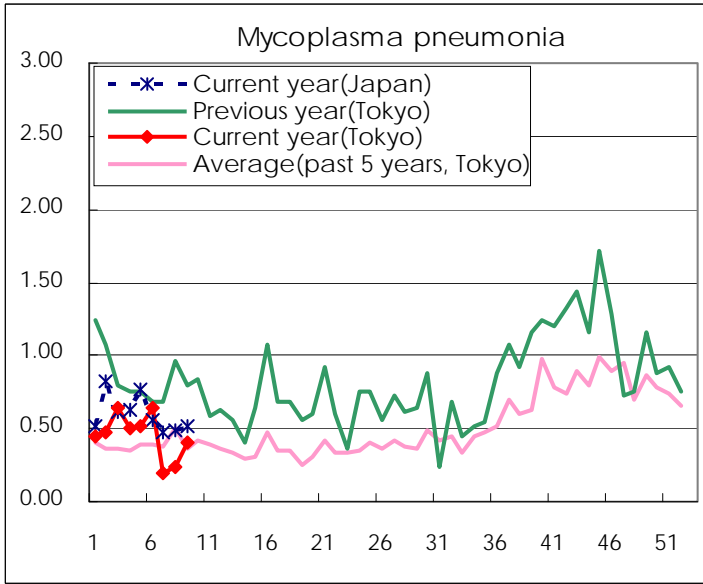
(Blank means 0.)

Disease Trend Graph (weekly reported cases per sentinel in comparison)









Number of sentinel facilities for weekly reporting		
Types of sentinels	Number of sentinels	Sentinels having reported
Pediatric	264	264
Influenza	419	415
Ophthalmic	39	37
Specially-designated	25	25

Tokyo Metropolitan Government
Infectious Disease Surveillance Center