
INFECTIOUS DISEASES WEEKLY REPORT

TOKYO IDWR

Tokyo Metropolitan Infectious Disease Surveillance Center

22 March 2013 / Number 11

Surveillance System in Tokyo, Japan

The infectious diseases which all physicians must report

All physicians must report to health centers the incidence of the diseases which are shown at page one. Health centers electronically report the individual cases to Tokyo Metropolitan Infectious Disease Surveillance Center.

The infectious diseases required to be reported by the sentinels

The numbers of patients who visit the sentinel clinics or hospitals during a week are reported to health centers in Tokyo. And they electronically report the numbers to Tokyo Metropolitan Infectious Disease Surveillance Center. We have about 500 sentinel clinics and hospitals in Tokyo.

1st Week is early January and 52nd Week is end of December.

Tokyo Metropolitan Institute of Public Health

TEL:81-3-3363-3213 FAX:81-3-5332-7365

e-mail:idsc@tokyo-eiken.go.jp

URL:idsc.tokyo-eiken.go.jp/

Number of patients with the diseases which all physicians must report

Category	Diseases	Tokyo				Japan		
		8th	9th	10th	11th	Cum 2013	11th	Cum 2013
I	Ebola hemorrhagic fever							
	Crimean-Congo hemorrhagic fever							
	Smallpox							
	South American hemorrhagic fever							
	Plague							
	Marburg disease							
	Lassa fever							
II	Acute poliomyelitis							
	Tuberculosis	71	80	79	76	777	344	4,732
	Diphtheria							
	Severe Acute Respiratory Syndrome(SARS)							
	Avian influenza H5N1							
III	Cholera							
	Shigellosis		1		1	5	4	24
	Enterohemorrhagic Escherichia coli infection	1	3	3	2	12	9	135
	Typhoid fever			2		5		12
	Paratyphoid fever				2	4	4	10
IV	Hepatitis E		3		3	12	7	30
	West Nile fever							
	Hepatitis A	1	1		2	5	8	32
	Echinococcosis							3
	Yellow fever							
	Psittacosis					2		1
	Omsk hemorrhagic fever							
	Relapsing fever							
	Kyasanur forest disease							
	Q fever							
	Rabies							
	Coccidioidomycosis							
	Monkeypox							
	Severe Fever with Thrombocytopenia Syndrome						2	2
	Hemorrhagic fever with renal syndrome							
	Western equine encephalitis							
	Tick-borne encephalitis							
	Anthrax							
	Chikungunya fever				1	2		5
	Scrub typhus(Tsutsugamushi disease)						1	32
	Dengue fever		1	2	1	6	3	29
	Eastern equine encephalitis							
	Avian influenza (excluding H5N1)							
	Nipah virus infection							
	Japanese spotted fever							1
	Japanese encephalitis							
	Hantavirus pulmonary syndrome							
	Herpes B virus infection							
	Glanders							
	Brucellosis							
	Venezuelan equine encephalitis							
Hendra virus infection								
Epidemic typhus								
Botulism								
Malaria	2					3	11	
Tularemia								
Lyme disease								
Lyssavirus infection(excluding rabies)								
Rift valley fever								
Melioidosis		1				1	2	
Legionellosis	2		1	1	15	11	153	
Leptospirosis							1	
Rocky mountain spotted fever								

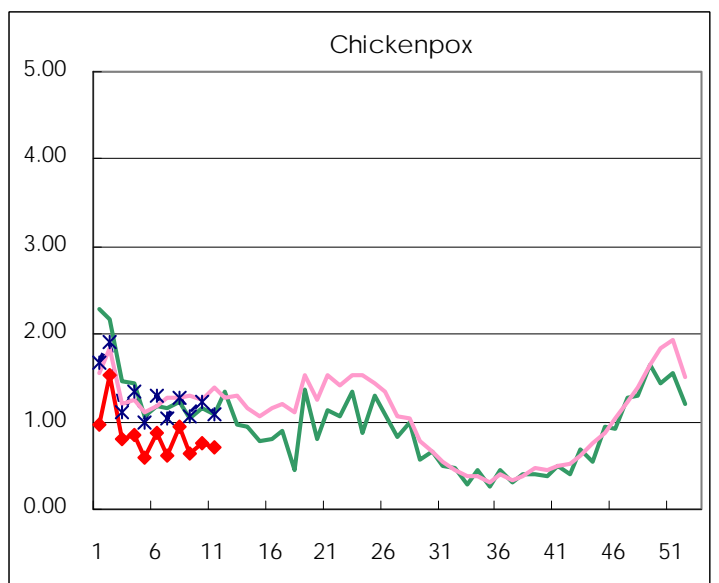
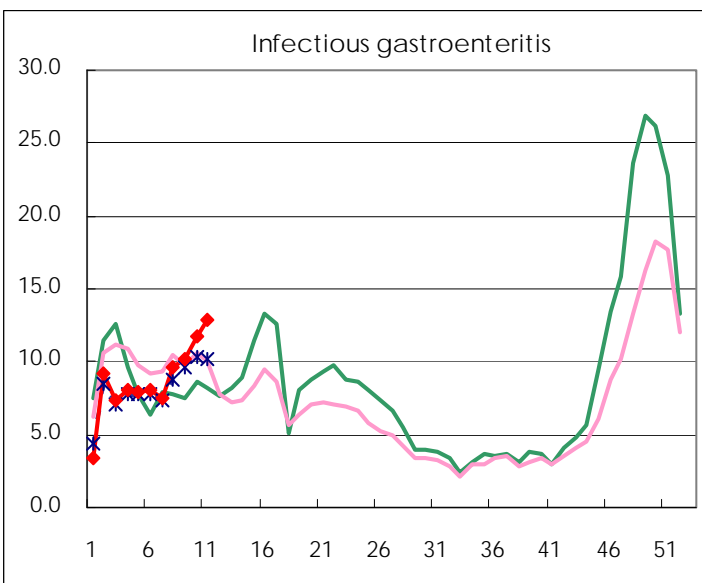
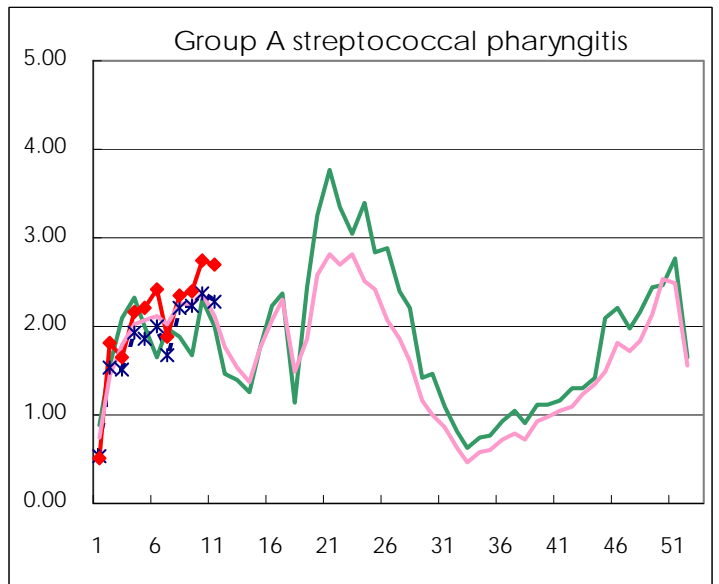
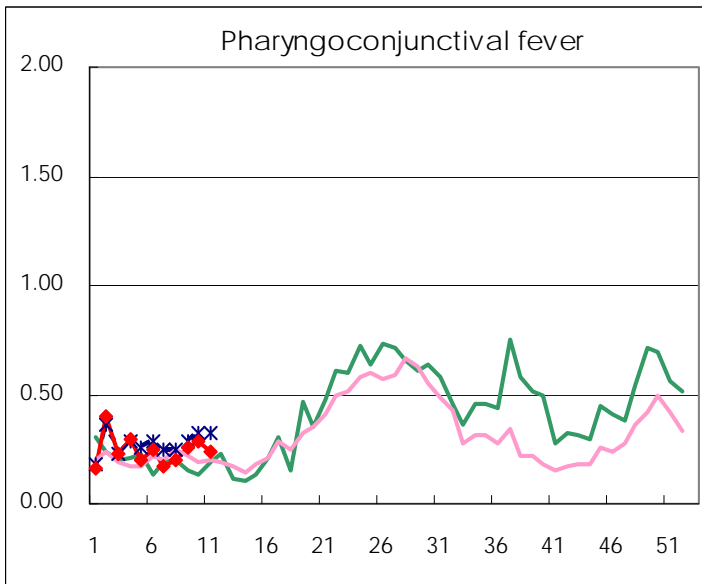
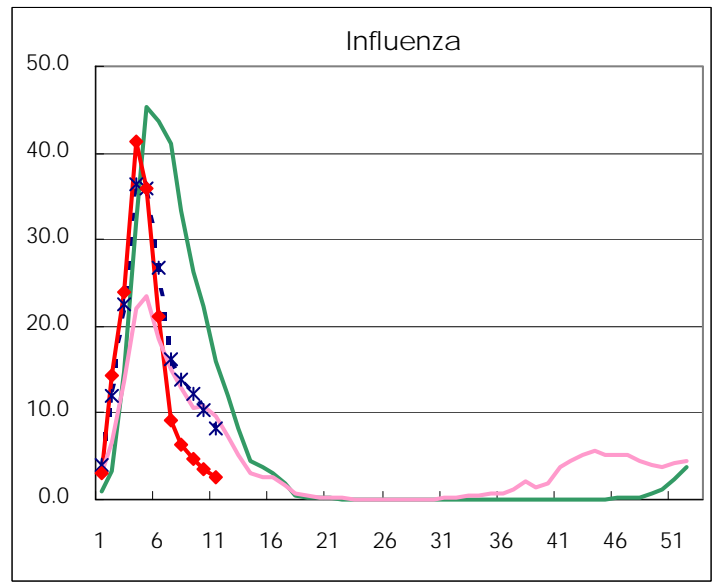
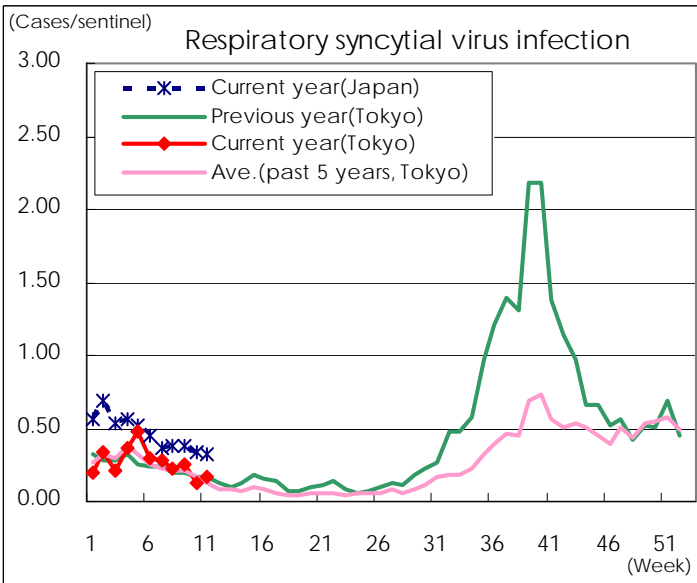
Category	Diseases	Tokyo				Japan		
		8th	9th	10th	11th	Cum 2013	11th	Cum 2013
V	Amebiasis	5	6	3	4	39	14	198
	Viral hepatitis(excluding hepatitis A and E)	2	1	2		13	2	43
	Acute encephalitis(excluding JE and WNE)	1	1			9	6	103
	Cryptosporidiosis							
	Creutzfeldt-Jakob disease			1		3	4	35
	Severe invasive streptococcal infections(TSLS)	1				5	1	45
	Acquired immunodeficiency syndrome (AIDS)	7	7	6	14	87	23	262
	Giardiasis			1	1	4	1	13
	Meningococcal meningitis							
	Congenital rubella syndrome							2
	Syphilis	5	4	8	14	71	18	189
	Tetanus					2	2	14
	Vancomycin-resistant S. aureus infection							
	Vancomycin-resistant Enterococcus infection	2				4		22
	Rubella	133	122	138	144	907	286	2,021
	Measles	2	2	2	2	21	8	62

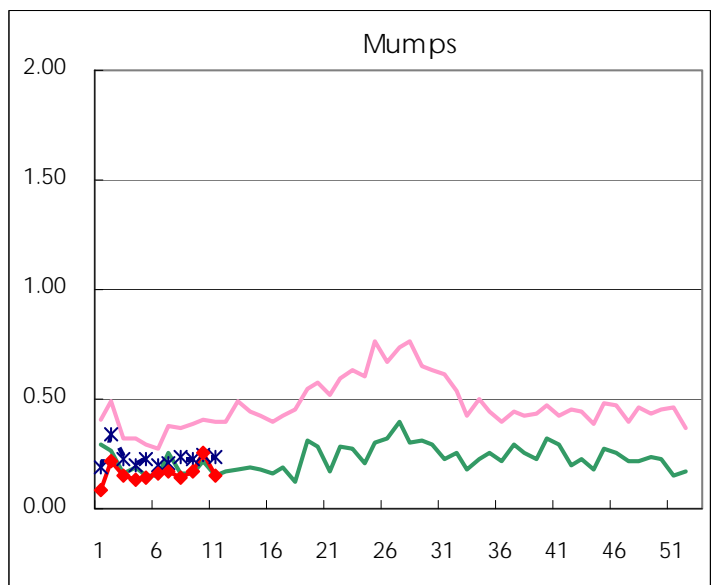
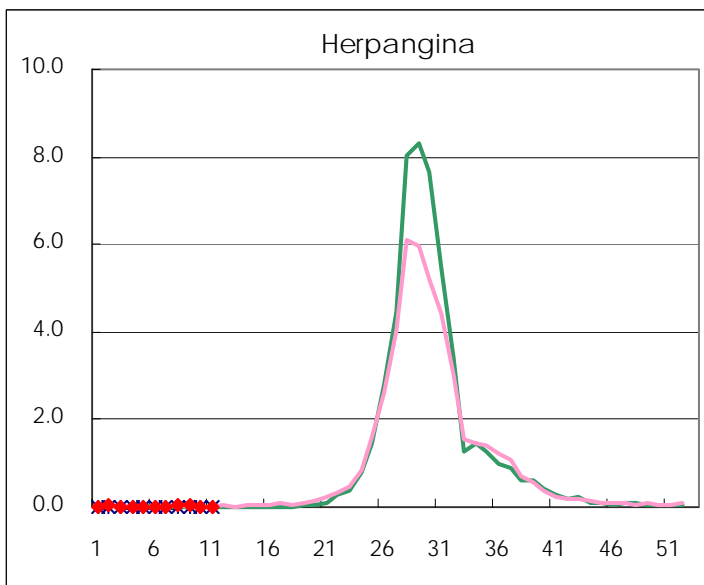
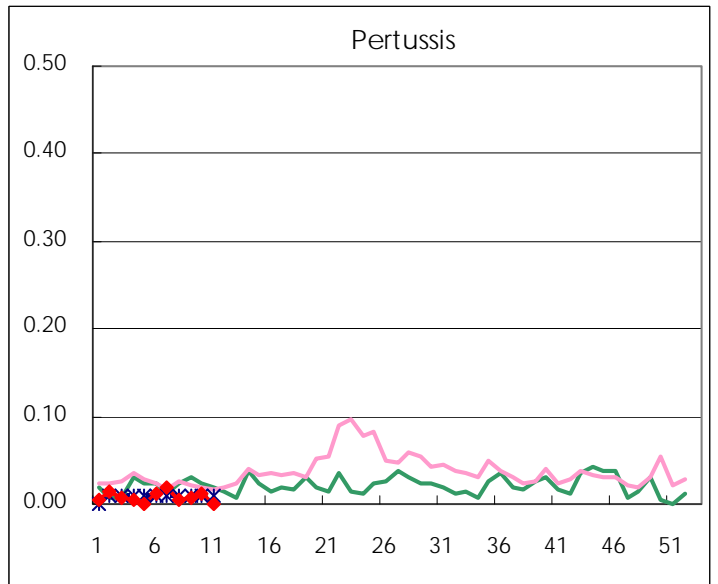
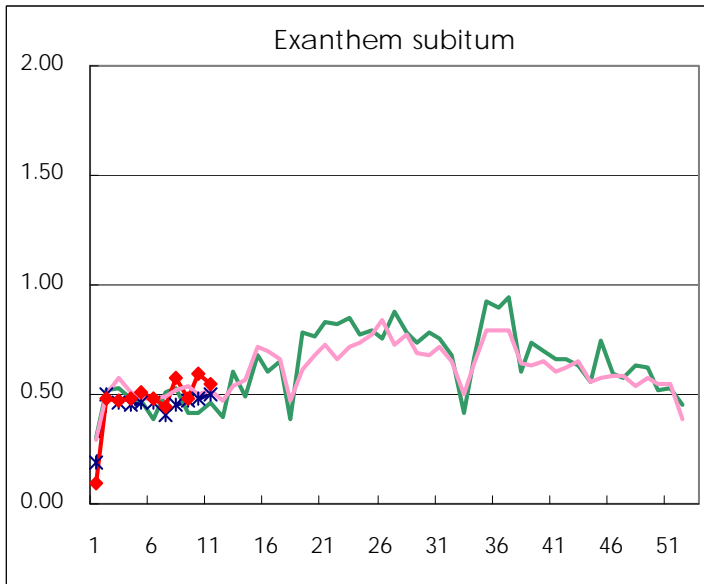
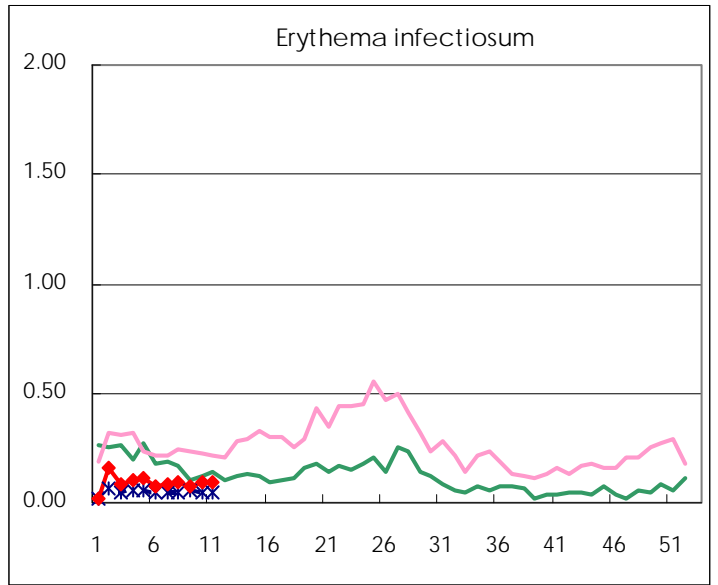
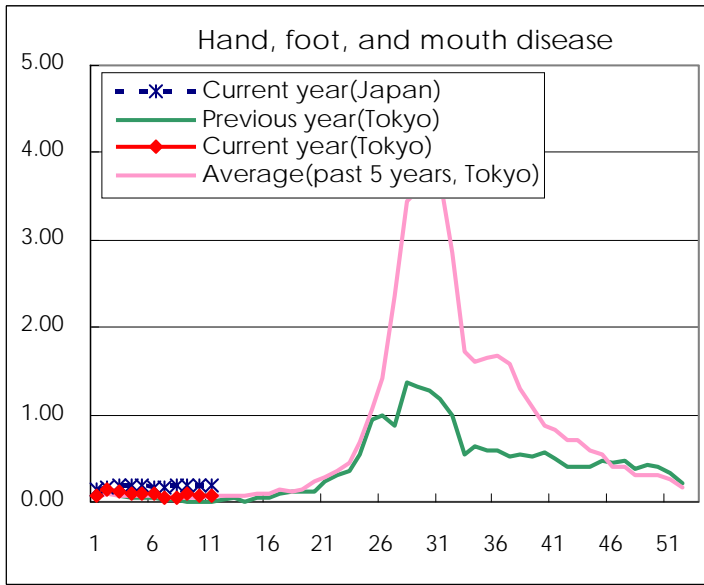
Number of patients with the diseases to be reported
by the designated clinics and hospitals

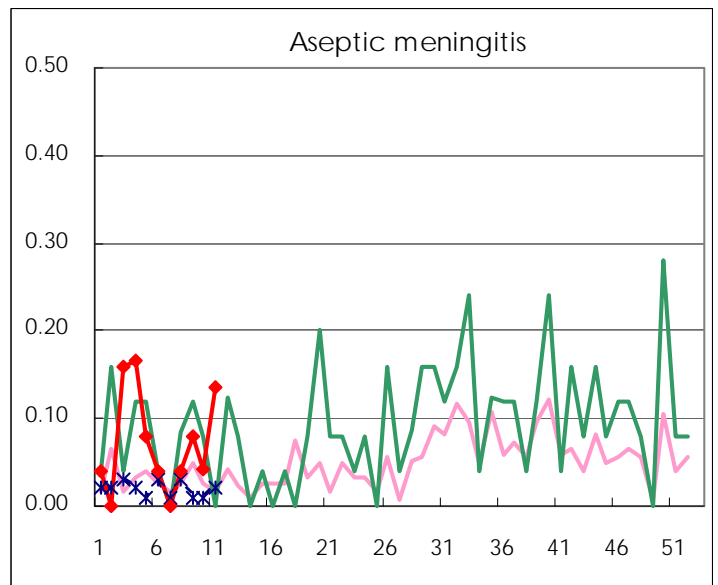
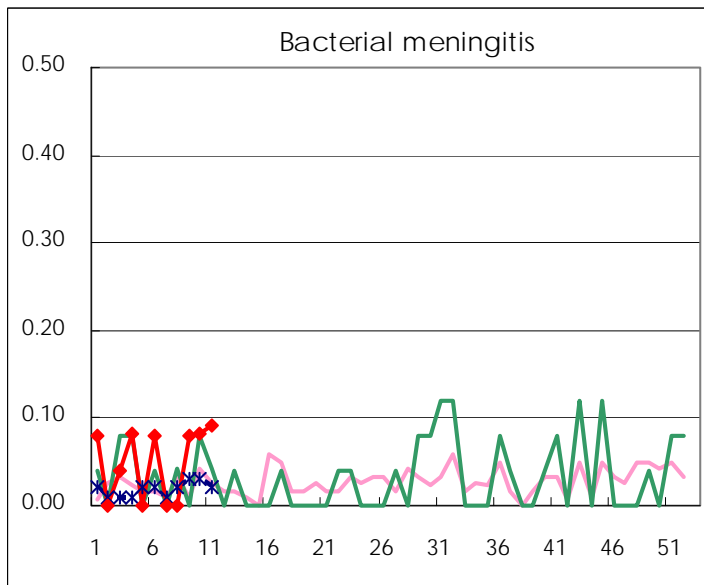
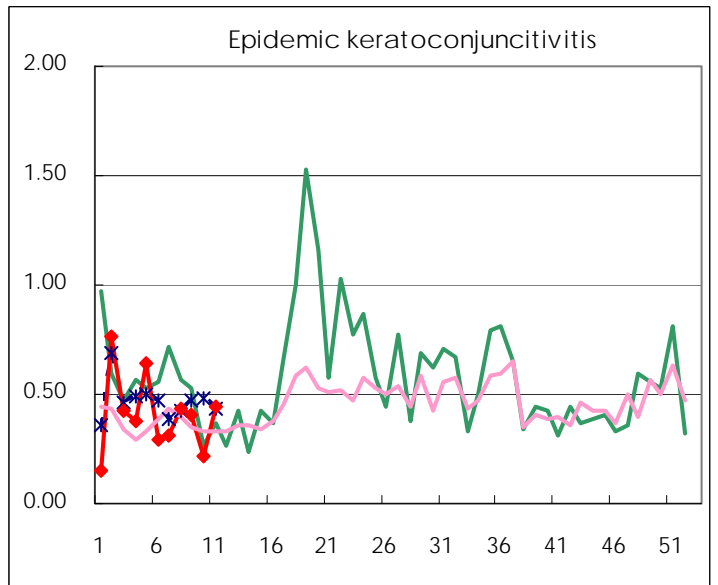
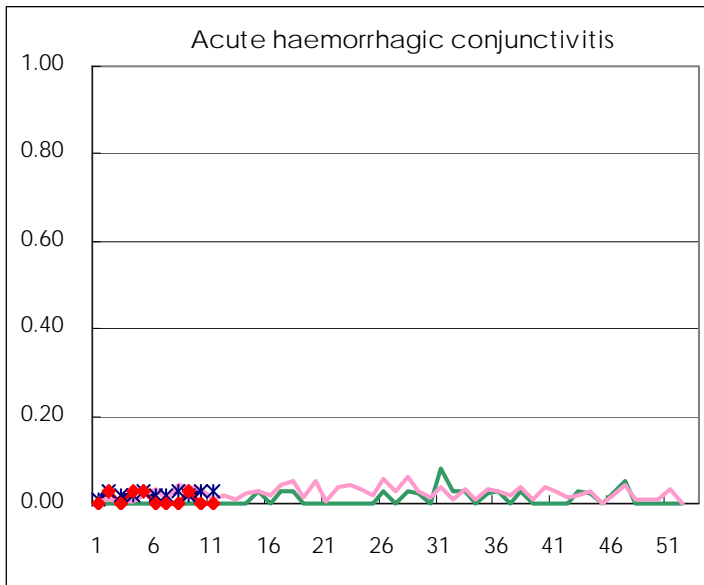
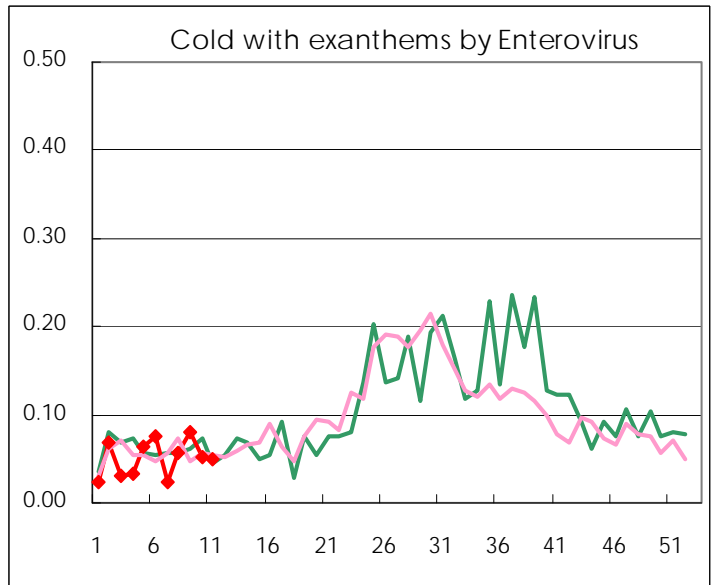
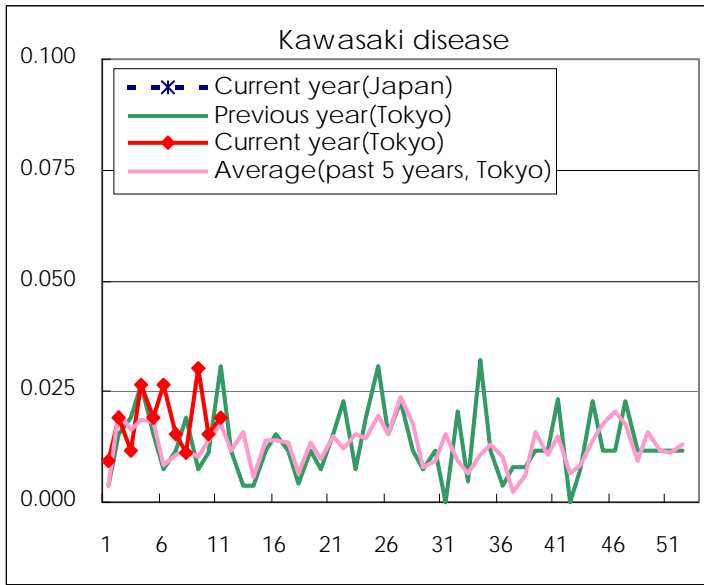
Diseases	Tokyo				
	8th	9th	10th	11th	/sentinel
Respiratory syncytial virus infection	59	67	35	45	0.17
Pharyngoconjunctival fever	53	67	75	63	0.24
Group A streptococcal pharyngitis	622	634	722	710	2.70
Infectious gastroenteritis	2,527	2,681	3,105	3,391	12.89
Chickenpox	250	168	200	185	0.70
Hand, foot, and mouth disease	14	24	19	21	0.08
Erythema infectiosum	26	21	24	25	0.10
Exanthem subitum	153	128	158	143	0.54
Pertussis	1	2	3		
Herpangina	8	8	5	4	0.02
Mumps	38	46	68	39	0.15
Kawasaki disease	3	8	4	5	0.02
Cold with exanths by Enterovirus	15	21	14	13	0.05
Influenza	2,611	1,913	1,480	1,061	2.55
Acute hemorrhagic conjunctivitis		1			
Epidemic keratoconjunctivitis	16	15	8	17	0.45
Bacterial meningitis		2	2	2	0.09
Aseptic meningitis	1	2	1	3	0.14
Mycoplasma pneumonia	6	10	7	16	0.73
Chlamydial pneumonia (excluding psittacosis)		3			
Influenza-Associated Hospitalizations	18	17	5	5	0.23

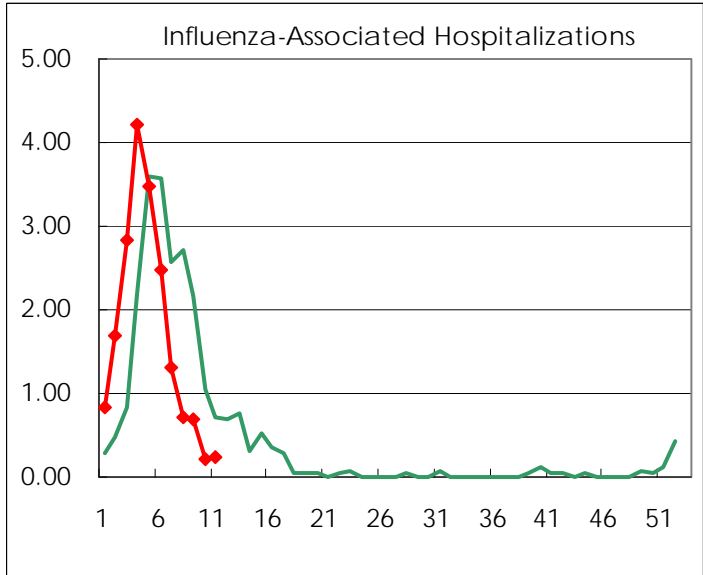
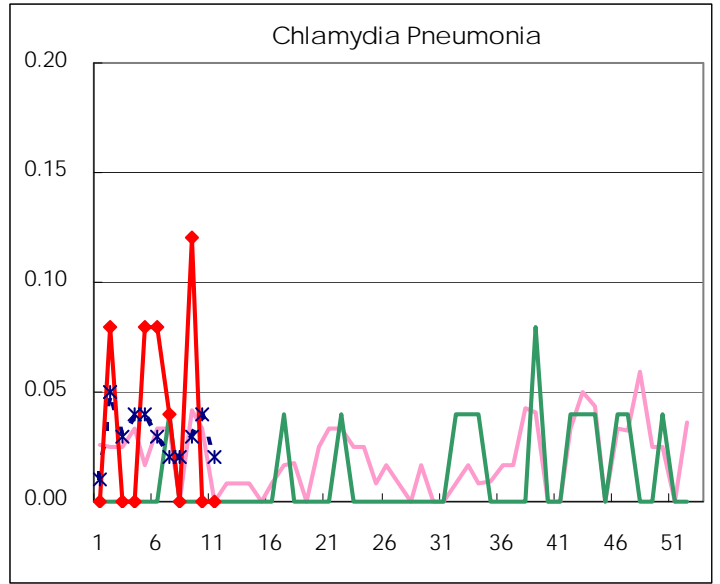
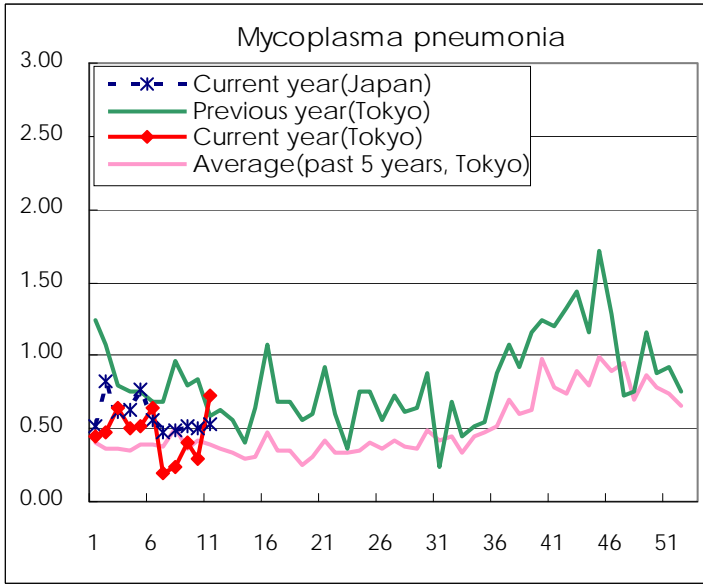
(Blank means 0.)

Disease Trend Graph (weekly reported cases per sentinel in comparison)









Number of sentinel facilities for weekly reporting		
Types of sentinels	Number of sentinels	Sentinels having reported
Pediatric	264	263
Influenza	419	416
Ophthalmic	39	38
Specially-designated	25	22

Tokyo Metropolitan Government
Infectious Disease Surveillance Center