

---

INFECTIOUS DISEASES WEEKLY REPORT

# TOKYO iDWR

Tokyo Metropolitan Infectious Disease Surveillance Center

## 4 April 2013 / Number 13

### Surveillance System in Tokyo, Japan

**The infectious diseases which all physicians must report**

All physicians must report to health centers the incidence of the diseases which are shown at page one. Health centers electronically report the individual cases to Tokyo Metropolitan Infectious Disease Surveillance Center.

**The infectious diseases required to be reported by the sentinels**

The numbers of patients who visit the sentinel clinics or hospitals during a week are reported to health centers in Tokyo. And they electronically report the numbers to Tokyo Metropolitan Infectious Disease Surveillance Center. We have about 500 sentinel clinics and hospitals in Tokyo.

1st Week is early January and 52nd Week is end of December.

Tokyo Metropolitan Institute of Public Health

TEL:81-3-3363-3213 FAX:81-3-5332-7365

e-mail:[idsc@tokyo-eiken.go.jp](mailto:idsc@tokyo-eiken.go.jp)

URL:[idsc.tokyo-eiken.go.jp/](http://idsc.tokyo-eiken.go.jp/)

---

## Number of patients with the diseases which all physicians must report

Category	Diseases	Tokyo				Japan			
		10th	11th	12th	13th	Cum 2013	13th	Cum 2013	
I	Ebola hemorrhagic fever								
	Crimean-Congo hemorrhagic fever								
	Smallpox								
	South American hemorrhagic fever								
	Plague								
	Marburg disease								
	Lassa fever								
II	Acute poliomyelitis								
	Tuberculosis	80	81	56	46	884	362	5,741	
	Diphtheria								
	Severe Acute Respiratory Syndrome(SARS)								
Avian influenza H5N1									
III	Cholera								
	Shigellosis		1	3		8		30	
	Enterohemorrhagic Escherichia coli infection	3	2	1	1	14	15	159	
	Typhoid fever	2		1	2	8	3	15	
	Paratyphoid fever		2	2		6	3	17	
IV	Hepatitis E		3	2		14	2	37	
	West Nile fever								
	Hepatitis A		2			5	2	38	
	Echinococcosis							4	
	Yellow fever								
	Psittacosis					2		1	
	Omsk hemorrhagic fever								
	Relapsing fever								
	Kyasanur forest disease								
	Q fever								
	Rabies								
	Coccidioidomycosis			2		2		2	
	Monkeypox								
	Severe Fever with Thrombocytopenia Syndrome							3	
	Hemorrhagic fever with renal syndrome								
	Western equine encephalitis								
	Tick-borne encephalitis								
	Anthrax								
	Chikungunya fever		1				2		5
	Scrub typhus(Tsutsugamushi disease)								33
	Dengue fever	2	1		2	8	5	36	
	Eastern equine encephalitis								
	Avian influenza (excluding H5N1)								
	Nipah virus infection								
	Japanese spotted fever								1
	Japanese encephalitis								
	Hantavirus pulmonary syndrome								
	Herpes B virus infection								
	Glanders								
	Brucellosis								
	Venezuelan equine encephalitis								
	Hendra virus infection								
Epidemic typhus									
Botulism									
Malaria			1			4	1	13	
Tularemia									
Lyme disease								1	
Lyssavirus infection(excluding rabies)									
Rift valley fever									
Melioidosis						1		2	
Legionellosis	1	1	2	1	18	11	179		
Leptospirosis								1	
Rocky mountain spotted fever									

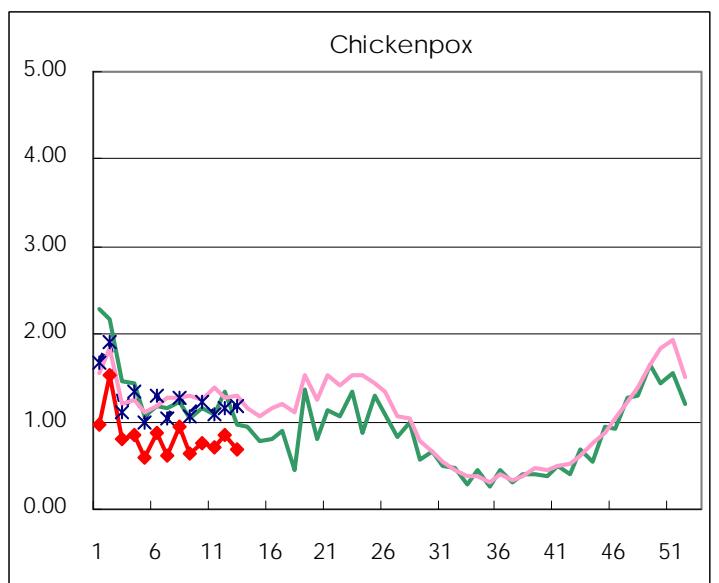
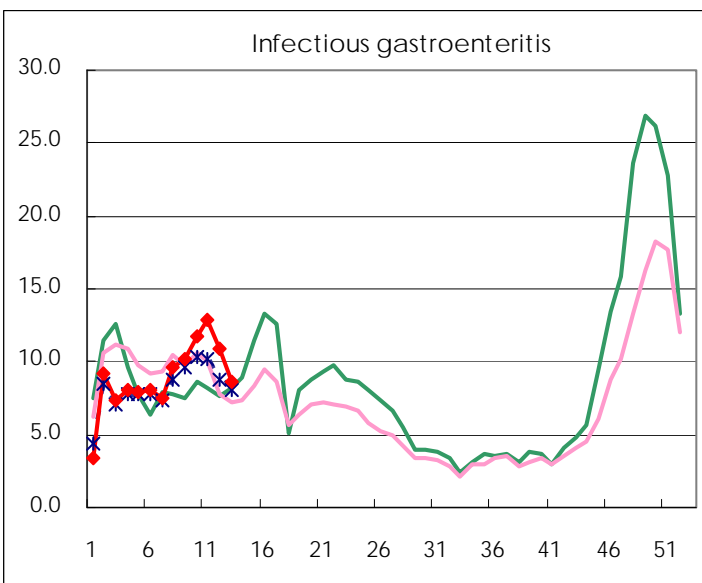
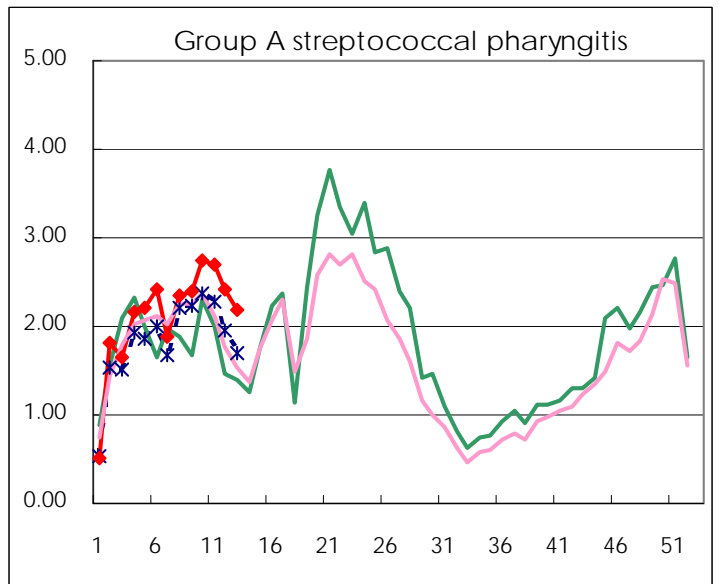
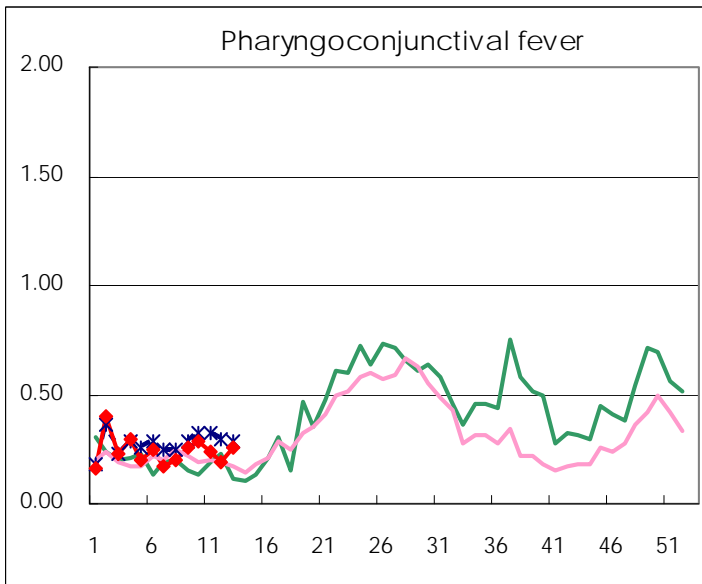
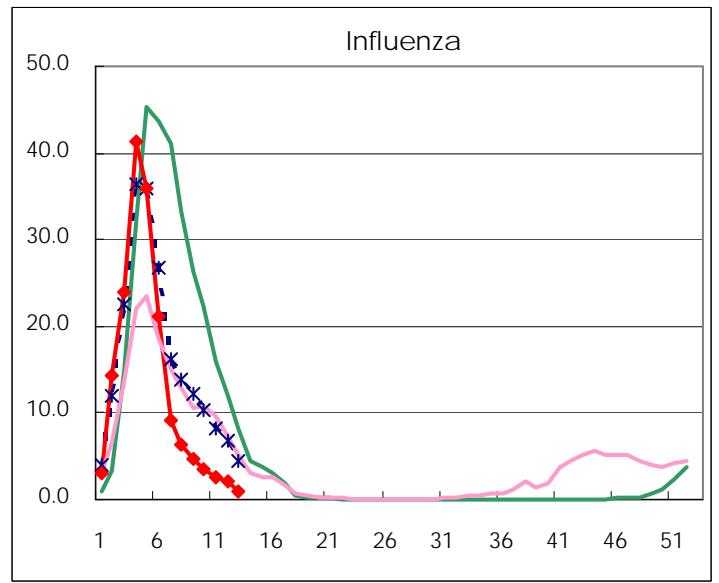
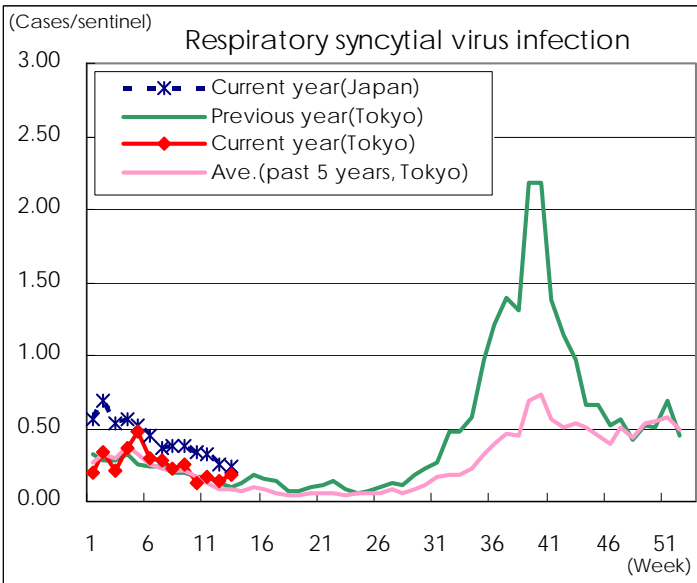
Category	Diseases	Tokyo				Japan		
		10th	11th	12th	13th	Cum 2013	13th	Cum 2013
V	Amebiasis	3	4	5	3	47	9	226
	Viral hepatitis(excluding hepatitis A and E)	2		2		15		49
	Acute encephalitis(excluding JE and WNE)			3	3	15	1	121
	Cryptosporidiosis							
	Creutzfeldt-Jakob disease	1			1	4	3	39
	Severe invasive streptococcal infections(TSLS)			1		6		52
	Acquired immunodeficiency syndrome (AIDS)	6	14	4	13	104	16	309
	Giardiasis	1	1			4		13
	Meningococcal meningitis							2
	Congenital rubella syndrome				1	1		3
	Syphilis	8	14	8	7	86	16	230
	Tetanus					2	3	19
	Vancomycin-resistant S. aureus infection							
	Vancomycin-resistant Enterococcus infection					4		22
	Rubella	138	149	127	128	1,168	375	2,903
	Measles	2	3	4	2	28	15	85

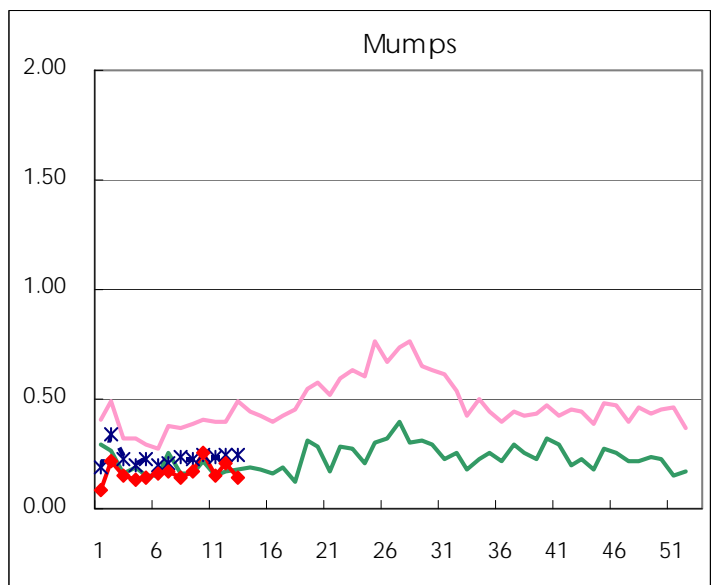
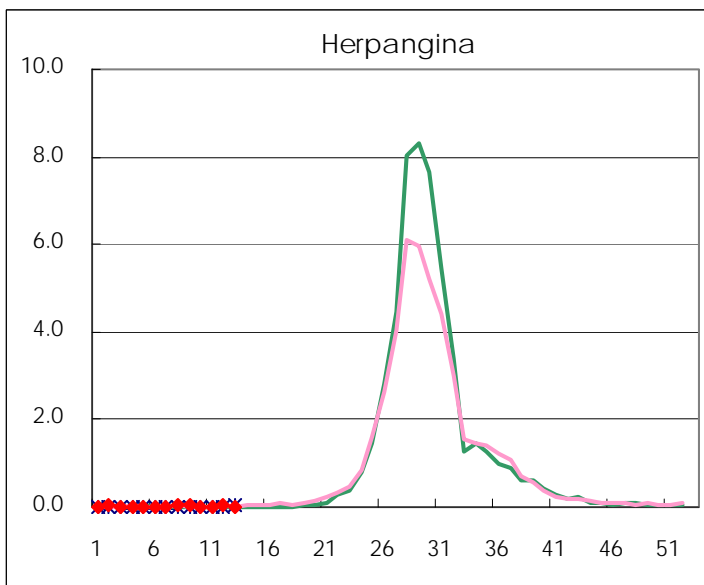
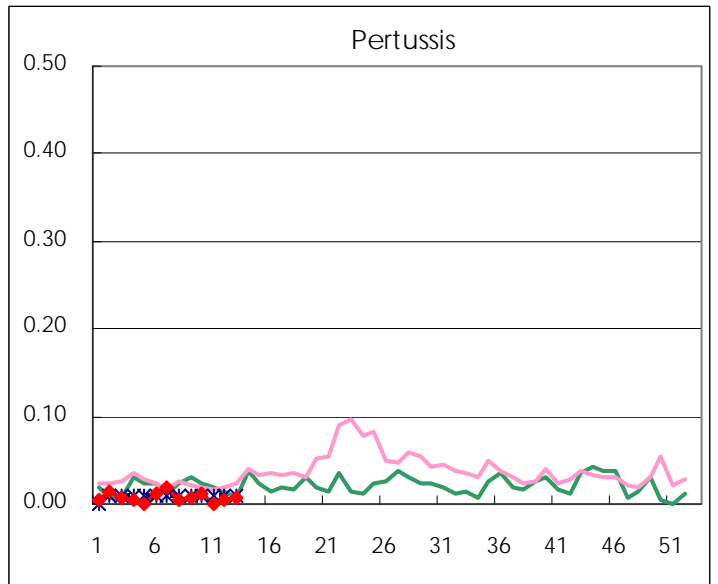
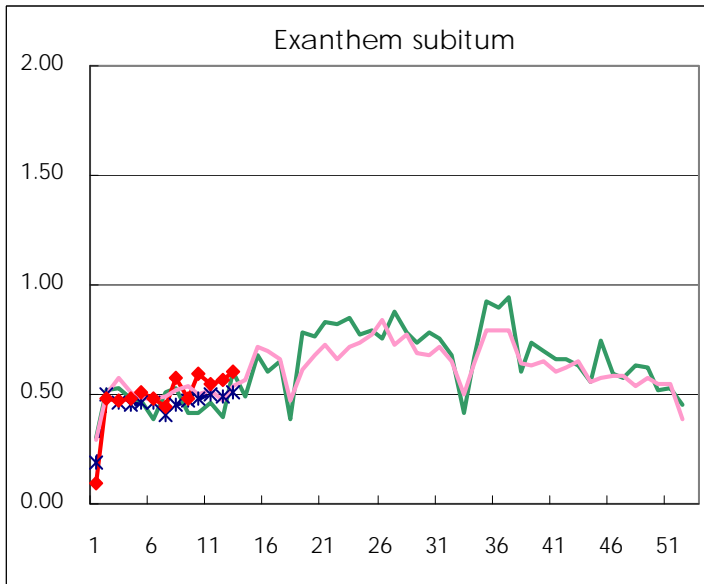
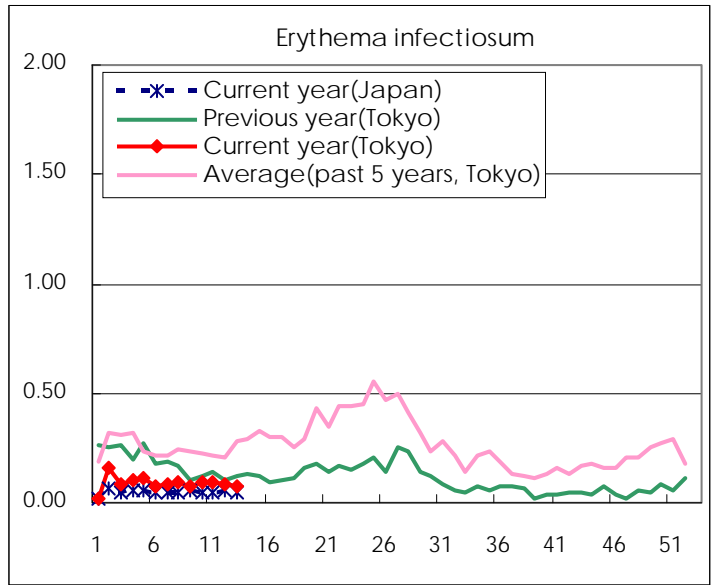
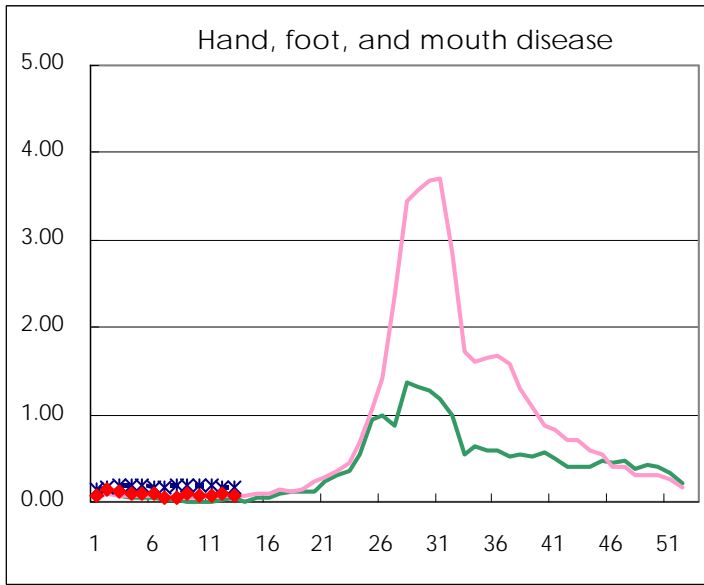
Number of patients with the diseases to be reported  
by the designated clinics and hospitals

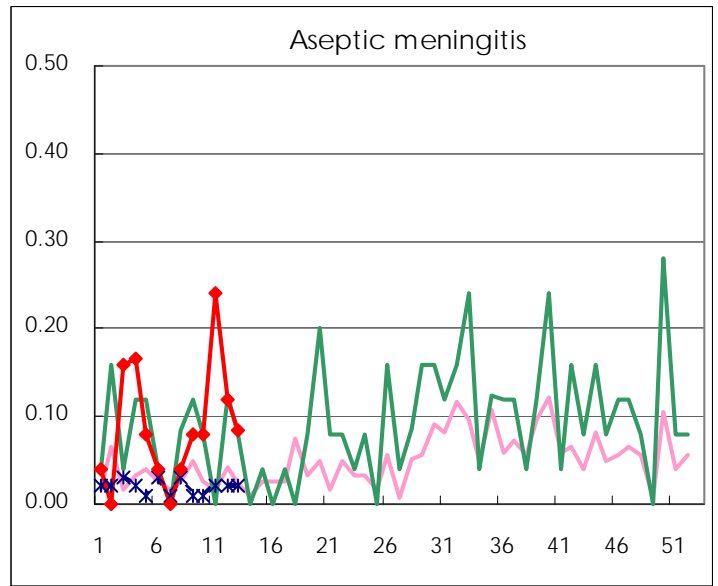
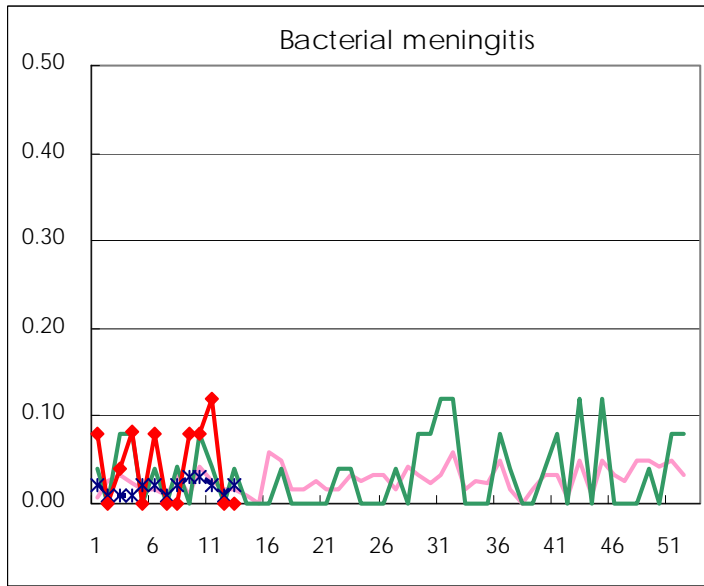
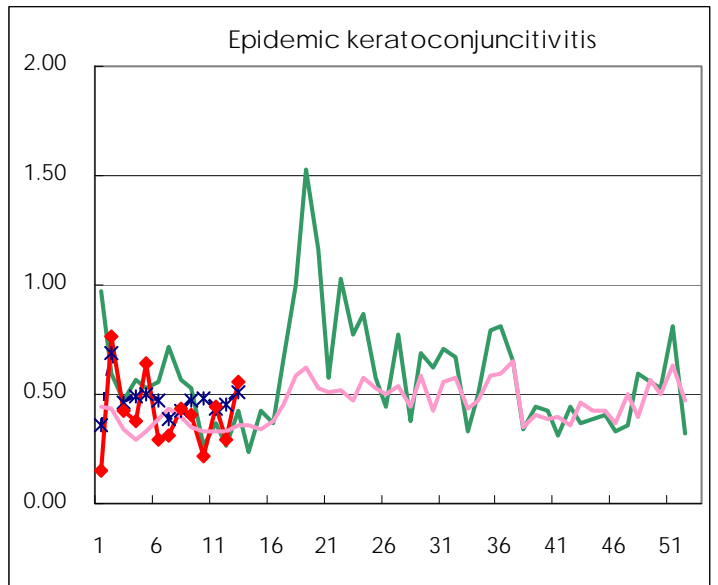
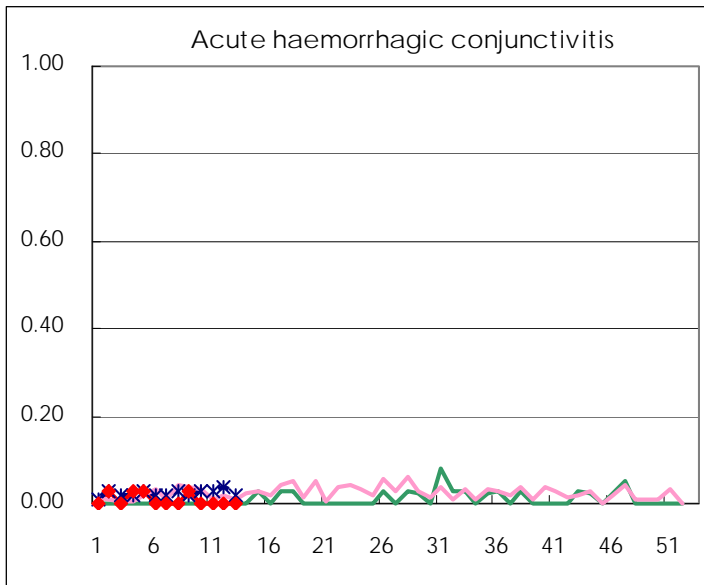
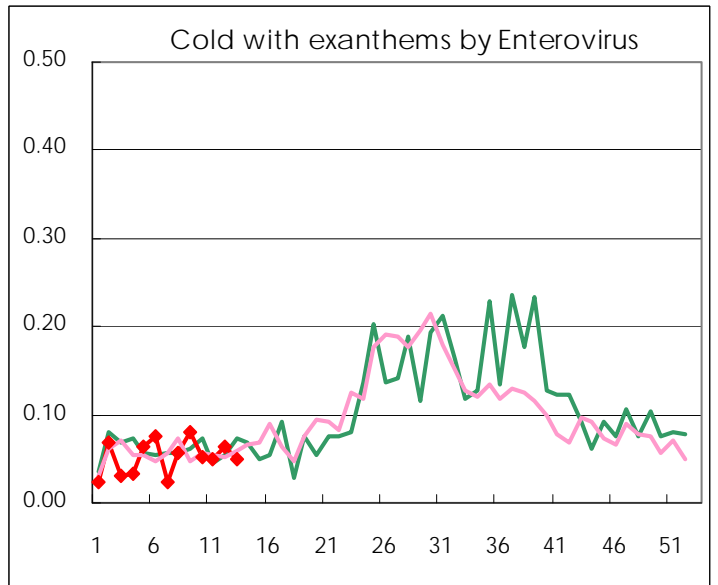
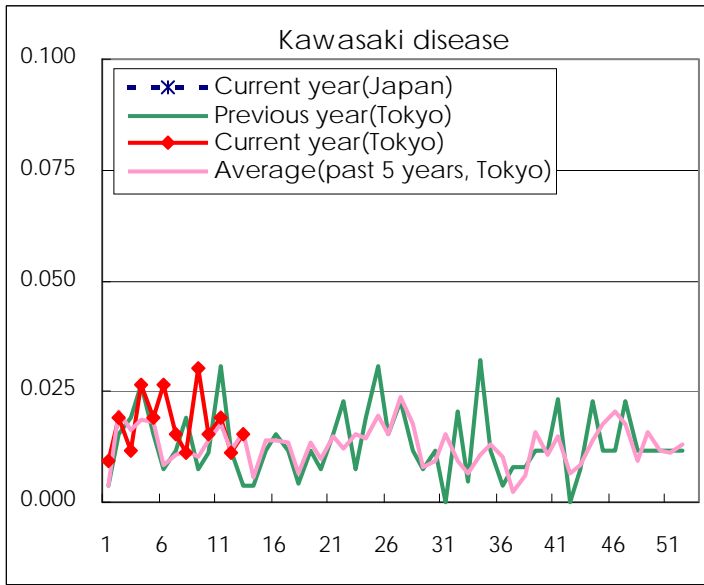
Diseases	Tokyo				
	10th	11th	12th	13th	/sentinel
Respiratory syncytial virus infection	35	45	39	46	0.18
Pharyngoconjunctival fever	75	63	50	66	0.25
Group A streptococcal pharyngitis	722	710	639	568	2.18
Infectious gastroenteritis	3,105	3,391	2,864	2,247	8.64
Chickenpox	200	185	224	178	0.68
Hand, foot, and mouth disease	19	21	25	19	0.07
Erythema infectiosum	24	25	23	20	0.08
Exanthem subitum	158	143	149	158	0.61
Pertussis	3		1	2	0.01
Herpangina	5	4	7	2	0.01
Mumps	68	39	55	36	0.14
Kawasaki disease	4	5	3	4	0.02
Cold with exanths by Enterovirus	14	13	17	13	0.05
Influenza	1,480	1,064	870	423	1.02
Acute hemorrhagic conjunctivitis					
Epidemic keratoconjunctivitis	8	17	11	21	0.55
Bacterial meningitis	2	3			
Aseptic meningitis	2	6	3	2	0.08
Mycoplasma pneumonia	8	17	10	7	0.29
Chlamydial pneumonia (excluding psittacosis)			1	1	0.04
Influenza-Associated Hospitalizations	6	7	6	2	0.08

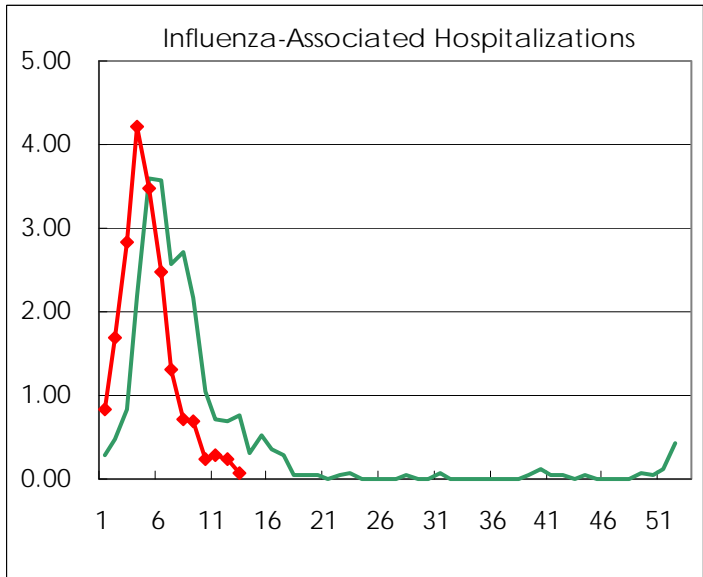
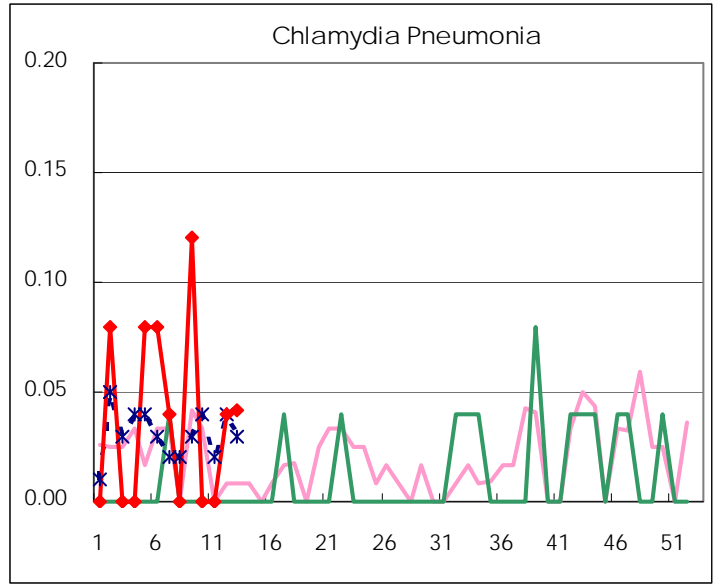
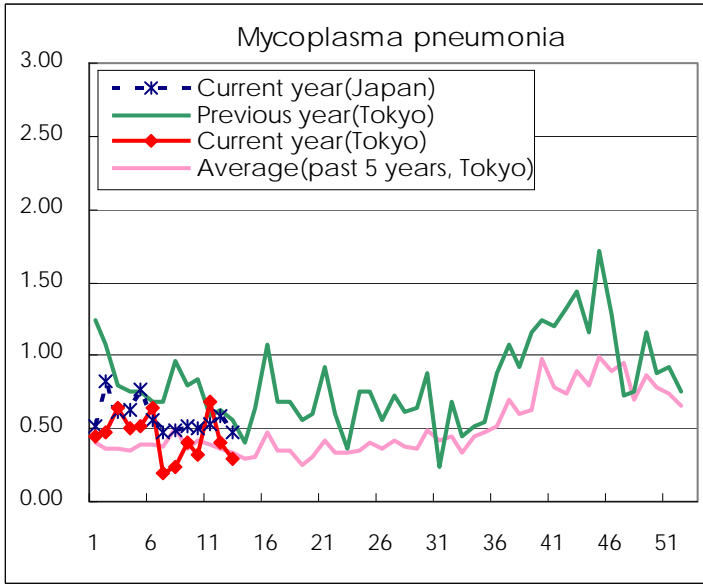
( Blank means 0. )

# Disease Trend Graph (weekly reported cases per sentinel in comparison)









Number of sentinel facilities for weekly reporting		
Types of sentinels	Number of sentinels	Sentinels having reported
Pediatric	264	260
Influenza	419	413
Ophthalmic	39	38
Specially-designated	25	24

**Tokyo Metropolitan Government  
Infectious Disease Surveillance Center**