
INFECTIOUS DISEASES WEEKLY REPORT

TOKYO IDWR

Tokyo Metropolitan Infectious Disease Surveillance Center

11 April 2013 / Number 14

Surveillance System in Tokyo, Japan

The infectious diseases which all physicians must report

All physicians must report to health centers the incidence of the diseases which are shown at page one. Health centers electronically report the individual cases to Tokyo Metropolitan Infectious Disease Surveillance Center.

The infectious diseases required to be reported by the sentinels

The numbers of patients who visit the sentinel clinics or hospitals during a week are reported to health centers in Tokyo. And they electronically report the numbers to Tokyo Metropolitan Infectious Disease Surveillance Center. We have about 500 sentinel clinics and hospitals in Tokyo.

1st Week is early January and 52nd Week is end of December.

Tokyo Metropolitan Institute of Public Health

TEL:81-3-3363-3213 FAX:81-3-5332-7365

e-mail:idsc@tokyo-eiken.go.jp

URL:idsc.tokyo-eiken.go.jp/

Number of patients with the diseases which all physicians must report

Category	Diseases	Tokyo				Cum 2013	Japan	
		11th	12th	13th	14th		14th	Cum 2013
I	Ebola hemorrhagic fever							
	Crimean-Congo hemorrhagic fever							
	Smallpox							
	South American hemorrhagic fever							
	Plague							
	Marburg disease							
	Lassa fever							
II	Acute poliomyelitis							
	Tuberculosis	82	60	57	75	976	333	6,192
	Diphtheria							
	Severe Acute Respiratory Syndrome(SARS)							
	Avian influenza H5N1							
III	Cholera							
	Shigellosis	1	3			8	2	32
	Enterohemorrhagic Escherichia coli infection	2	1	1	2	16	12	174
	Typhoid fever		1	2	1	9	2	17
	Paratyphoid fever	2	2			6		17
IV	Hepatitis E	3	2		1	15	1	38
	West Nile fever							
	Hepatitis A	2			1	6	4	44
	Echinococcosis							5
	Yellow fever							
	Psittacosis					2		1
	Omsk hemorrhagic fever							
	Relapsing fever							
	Kyasanur forest disease							
	Q fever							
	Rabies							
	Coccidioidomycosis		2			2		2
	Monkeypox							
	Severe Fever with Thrombocytopenia Syndrome						1	5
	Hemorrhagic fever with renal syndrome							
	Western equine encephalitis							
	Tick-borne encephalitis							
	Anthrax							
	Chikungunya fever	1				2		5
	Scrub typhus(Tsutsugamushi disease)							33
	Dengue fever	1		2	1	9	4	39
	Eastern equine encephalitis							
	Avian influenza (excluding H5N1)							
	Nipah virus infection							
	Japanese spotted fever							1
	Japanese encephalitis							
	Hantavirus pulmonary syndrome							
	Herpes B virus infection							
	Glanders							
	Brucellosis							
	Venezuelan equine encephalitis							
	Hendra virus infection							
Epidemic typhus								
Botulism								
Malaria		1			4	1	14	
Tularemia								
Lyme disease							1	
Lyssavirus infection(excluding rabies)								
Rift valley fever								
Melioidosis					1		2	
Legionellosis	1	2	1	1	19	8	187	
Leptospirosis							1	
Rocky mountain spotted fever								

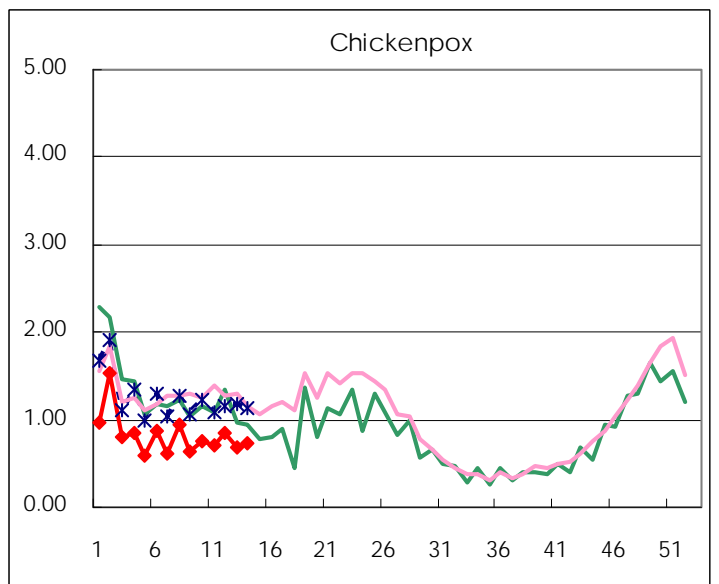
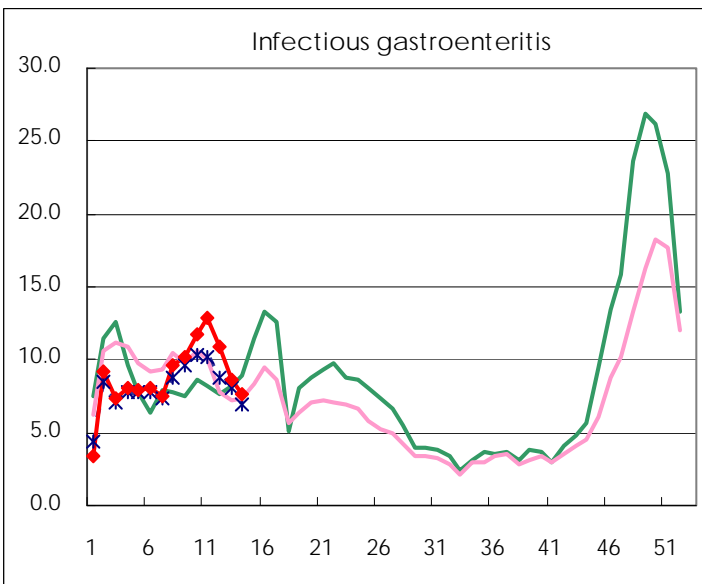
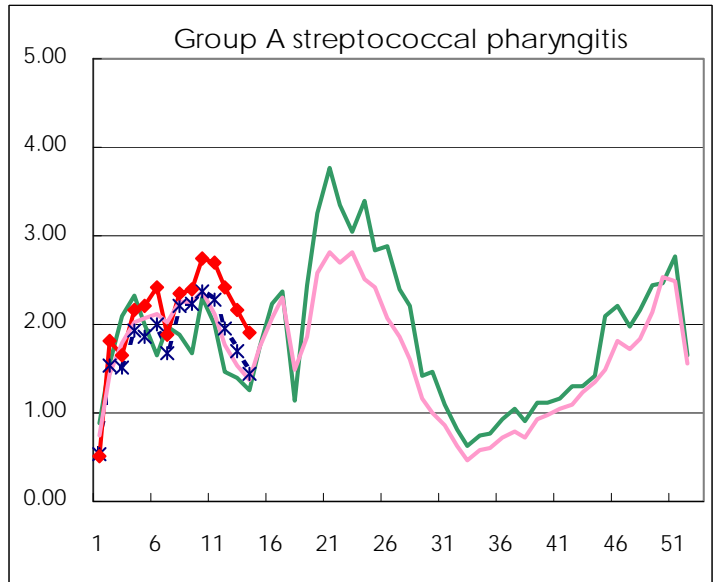
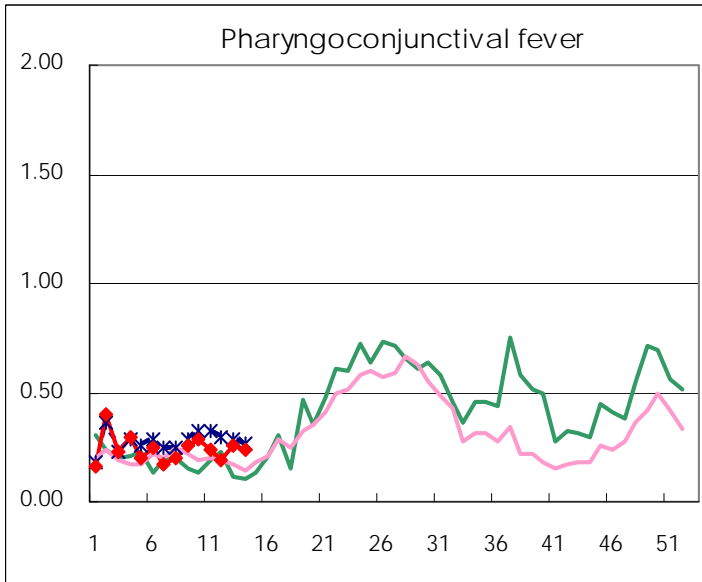
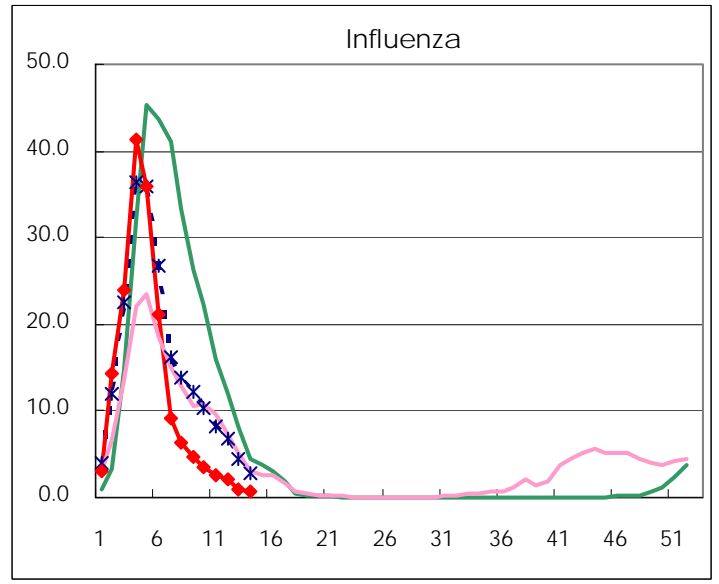
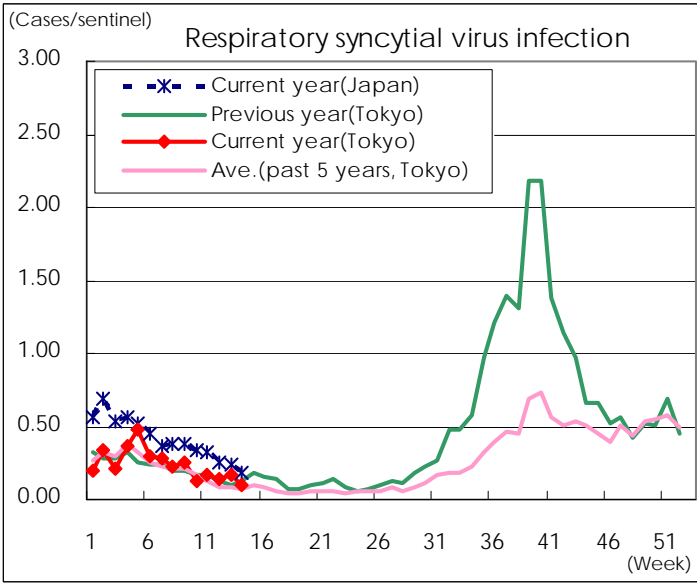
Category	Diseases	Tokyo				Japan		
		11th	12th	13th	14th	Cum 2013	14th	Cum 2013
V	Amebiasis	4	5	3	7	54	16	245
	Viral hepatitis(excluding hepatitis A and E)		2		1	16	4	56
	Acute encephalitis(excluding JE and WNE)		3	3		15	4	127
	Cryptosporidiosis							
	Creutzfeldt-Jakob disease			1		4	2	41
	Severe invasive streptococcal infections(TSLS)		1			6	5	57
	Acquired immunodeficiency syndrome (AIDS)	14	4	13	7	111	16	335
	Giardiasis	1			1	5		14
	Invasive <i>Haemophilus influenzae</i> disease				1	1	1	1
	Invasive meningococcal disease							
	Invasive pneumococcal disease				1	1	16	16
	Meningococcal meningitis							2
	Congenital rubella syndrome			1		1		3
	Syphilis	14	8	7	7	93	17	254
	Tetanus					2	1	20
	Vancomycin-resistant <i>S. aureus</i> infection							
	Vancomycin-resistant <i>Enterococcus</i> infection					4		22
	Rubella	149	127	128	152	1,320	460	3,480
Measles	3	4	1	3	30	10	89	

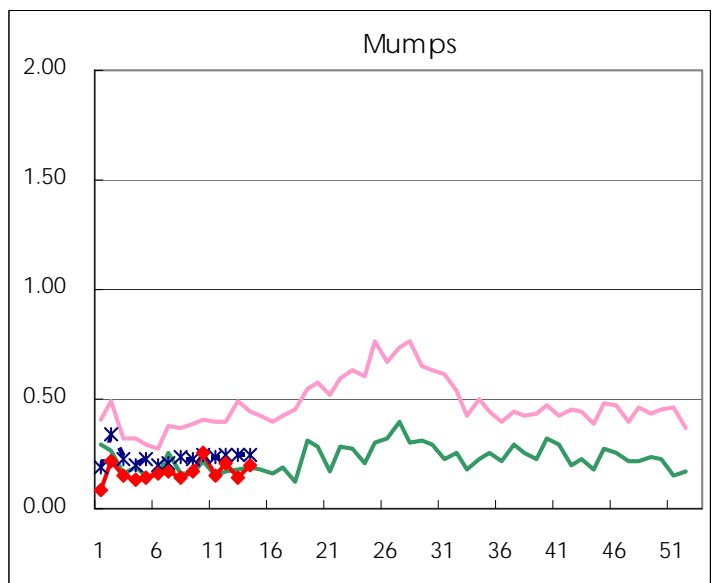
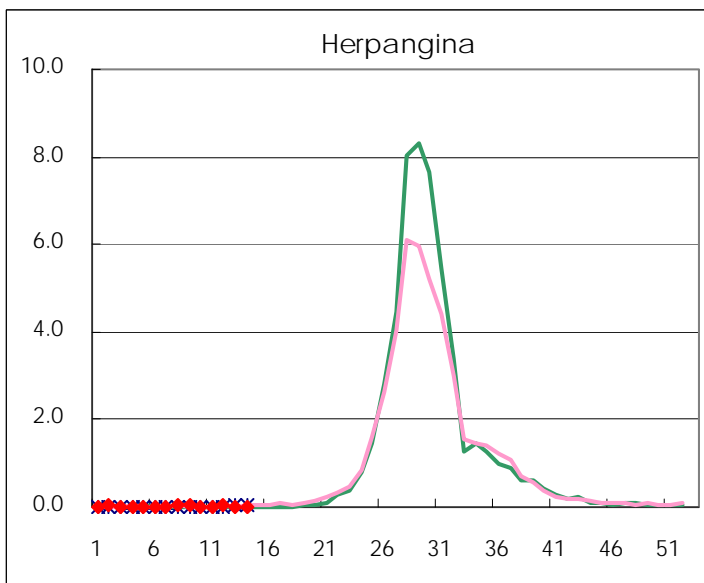
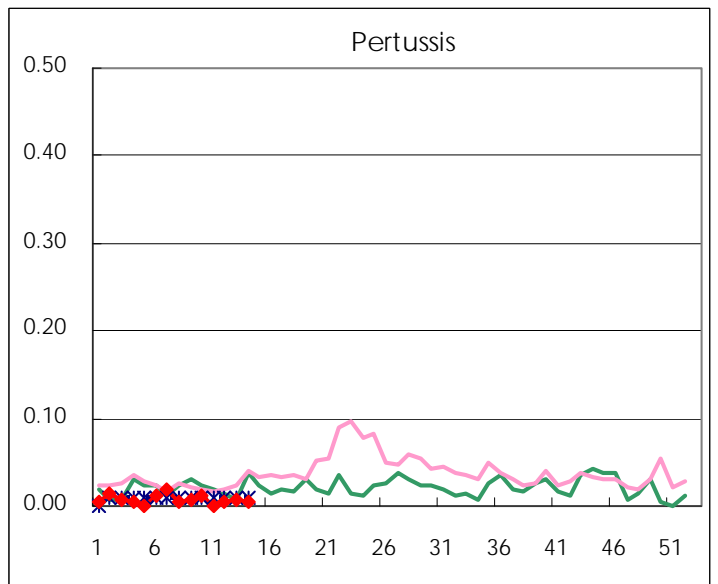
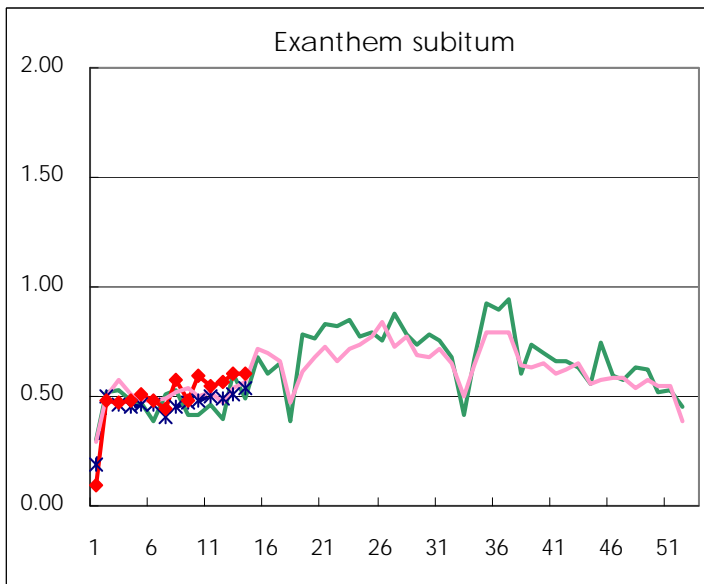
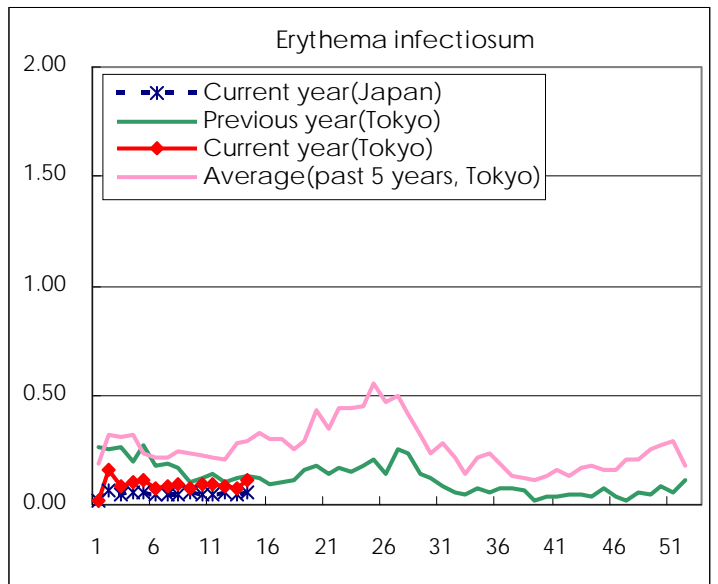
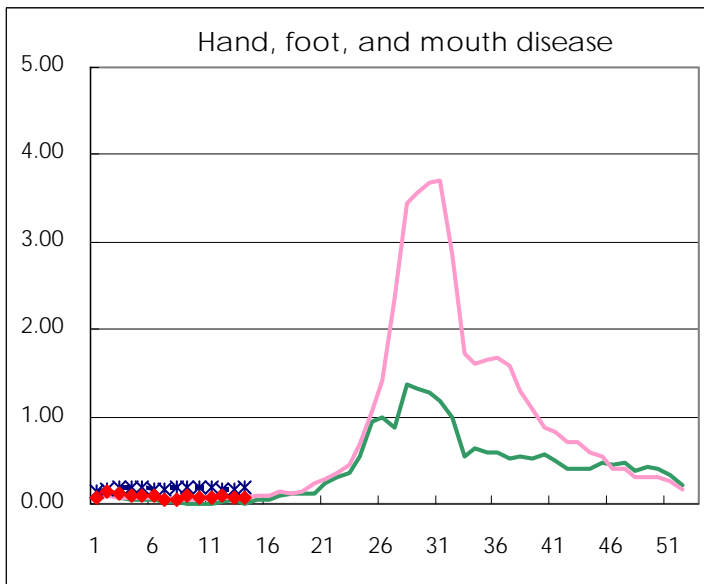
Number of patients with the diseases to be reported
by the designated clinics and hospitals

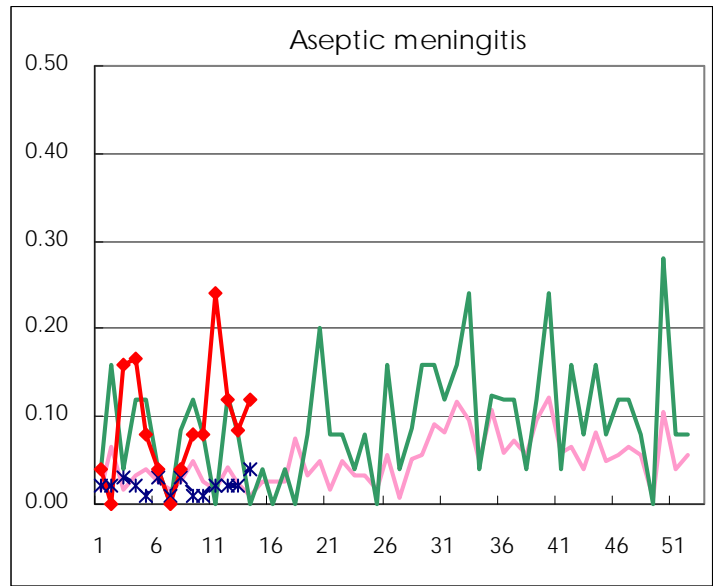
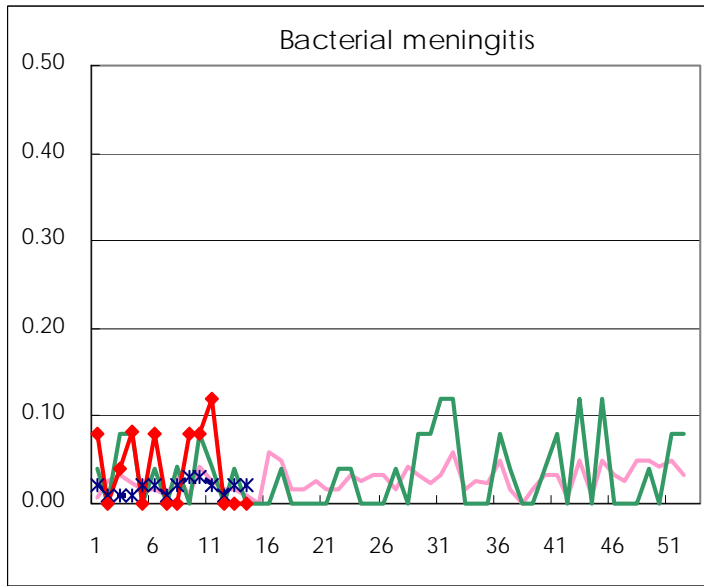
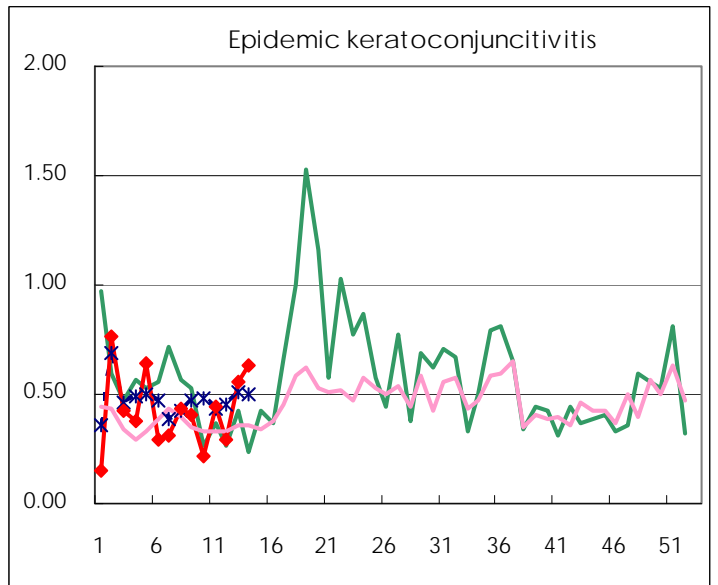
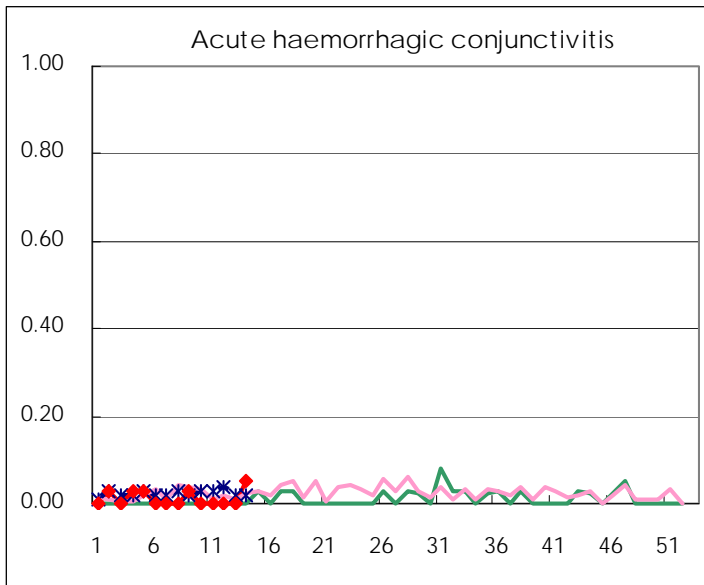
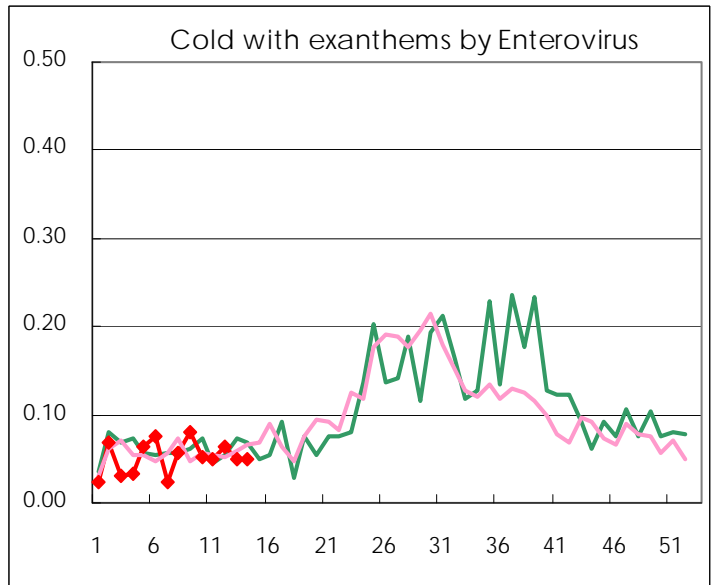
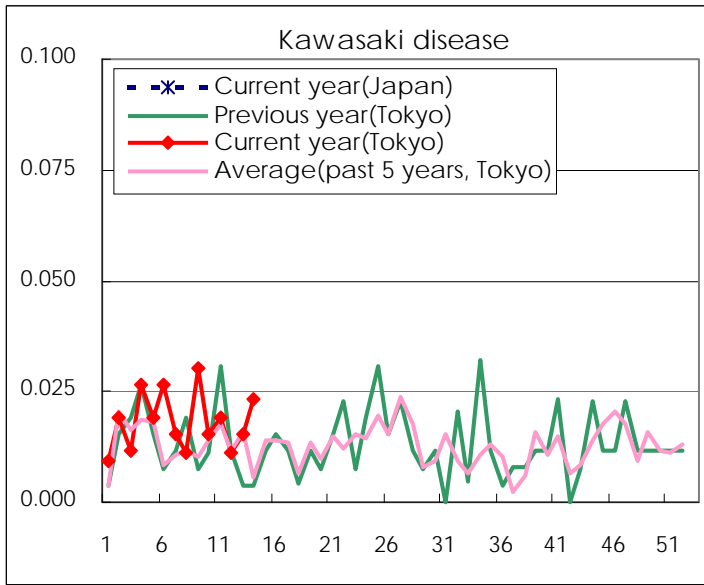
Diseases	Tokyo				
	11th	12th	13th	14th	/sentinel
Respiratory syncytial virus infection	45	39	46	26	0.10
Pharyngoconjunctival fever	63	50	67	63	0.24
Group A streptococcal pharyngitis	710	639	571	498	1.92
Infectious gastroenteritis	3,391	2,864	2,252	2,000	7.69
Chickenpox	185	224	179	189	0.73
Hand, foot, and mouth disease	21	25	19	18	0.07
Erythema infectiosum	25	23	20	29	0.11
Exanthem subitum	143	149	159	156	0.60
Pertussis		1	2	1	0.00
Herpangina	4	7	2	3	0.01
Mumps	39	55	37	51	0.20
Kawasaki disease	5	3	4	6	0.02
Cold with exanthems by Enterovirus	13	17	13	13	0.05
Influenza	1,064	870	426	337	0.81
Acute hemorrhagic conjunctivitis				2	0.05
Epidemic keratoconjunctivitis	17	11	21	24	0.63
Bacterial meningitis	3				
Aseptic meningitis	6	3	2	3	0.12
Mycoplasma pneumonia	17	10	7	8	0.32
Chlamydial pneumonia (excluding psittacosis)		1	1	1	0.04
Influenza-Associated Hospitalizations	7	6	2	2	0.08

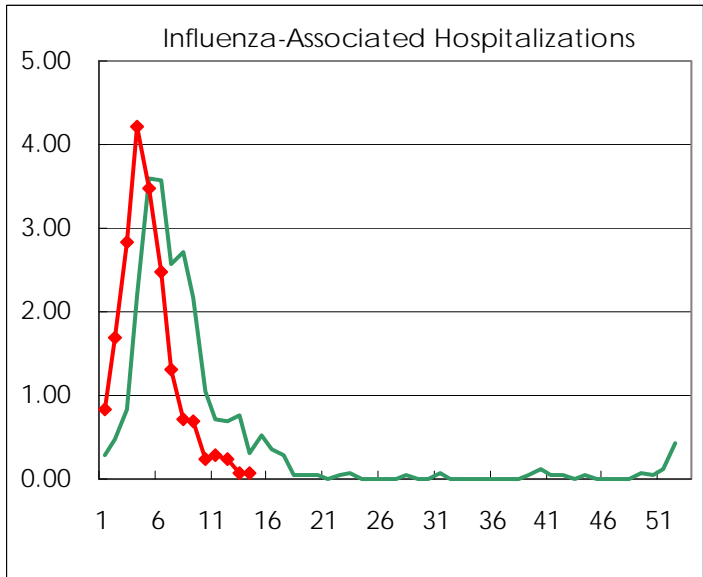
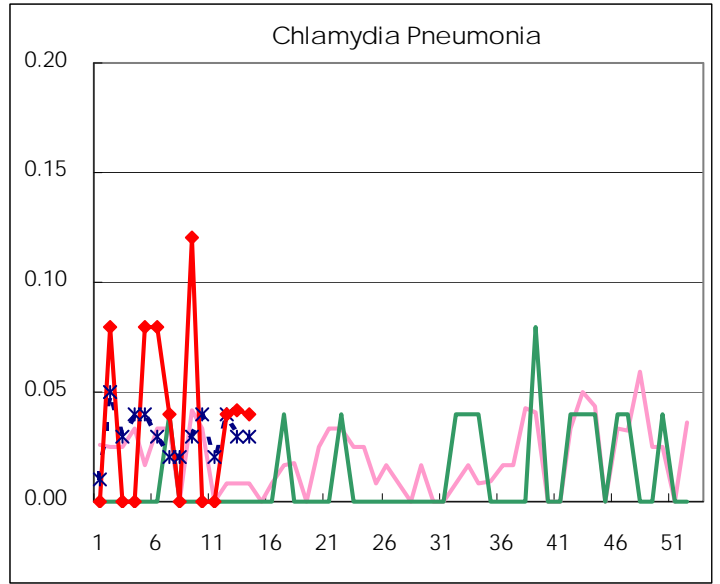
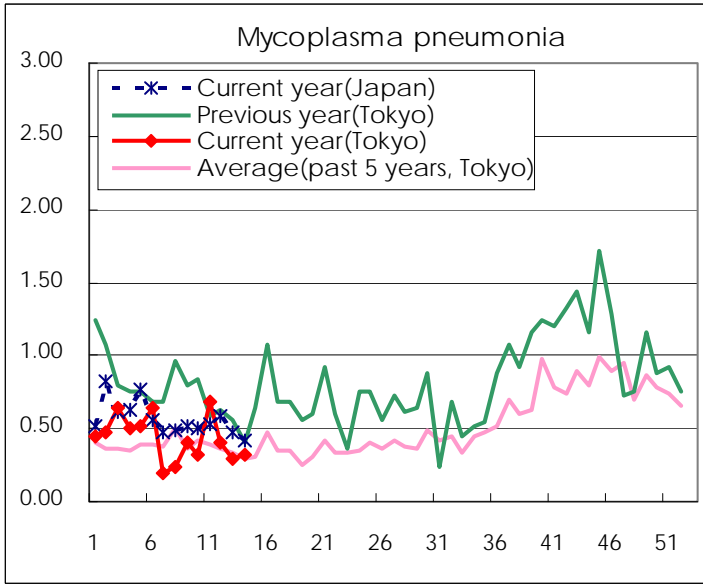
(Blank means 0.)

Disease Trend Graph (weekly reported cases per sentinel in comparison)









Number of sentinel facilities for weekly reporting		
Types of sentinels	Number of sentinels	Sentinels having reported
Pediatric	264	260
Influenza	419	414
Ophthalmic	39	38
Specially-designated	25	25

Tokyo Metropolitan Government
Infectious Disease Surveillance Center