
INFECTIOUS DISEASES WEEKLY REPORT

TOKYO IDWR

Tokyo Metropolitan Infectious Disease Surveillance Center

25 April 2013 / Number 16

Surveillance System in Tokyo, Japan

The infectious diseases which all physicians must report

All physicians must report to health centers the incidence of the diseases which are shown at page one. Health centers electronically report the individual cases to Tokyo Metropolitan Infectious Disease Surveillance Center.

The infectious diseases required to be reported by the sentinels

The numbers of patients who visit the sentinel clinics or hospitals during a week are reported to health centers in Tokyo. And they electronically report the numbers to Tokyo Metropolitan Infectious Disease Surveillance Center. We have about 500 sentinel clinics and hospitals in Tokyo.

1st Week is early January and 52nd Week is end of December.

Tokyo Metropolitan Institute of Public Health

TEL:81-3-3363-3213 FAX:81-3-5332-7365

e-mail:idsc@tokyo-eiken.go.jp

URL:idsc.tokyo-eiken.go.jp/

Number of patients with the diseases which all physicians must report

Category	Diseases	Tokyo				Japan		
		13th	14th	15th	16th	Cum 2013	16th	Cum 2013
I	Ebola hemorrhagic fever							
	Crimean-Congo hemorrhagic fever							
	Smallpox							
	South American hemorrhagic fever							
	Plague							
	Marburg disease							
	Lassa fever							
II	Acute poliomyelitis							
	Tuberculosis	64	91	81	45	1,125	354	7,273
	Diphtheria							
	Severe Acute Respiratory Syndrome(SARS)							
III	Avian influenza H5N1							
	Cholera							
	Shigellosis			1		9	2	38
	Enterohemorrhagic Escherichia coli infection	1	2	2	1	19	15	208
	Typhoid fever	2	1		1	10	2	21
IV	Paratyphoid fever				2	8	3	21
	Hepatitis E		1	1	1	17	5	47
	West Nile fever							
	Hepatitis A		1		1	7	2	52
	Echinococcosis							6
	Yellow fever							
	Psittacosis					2		3
	Omsk hemorrhagic fever							
	Relapsing fever							
	Kyasanur forest disease							
	Q fever				1	1	1	1
	Rabies							
	Coccidioidomycosis					2		2
	Monkeypox							
	Severe Fever with Thrombocytopenia Syndrome						1	8
	Hemorrhagic fever with renal syndrome							
	Western equine encephalitis							
	Tick-borne encephalitis							
	Anthrax							
	Chikungunya fever					2		5
	Scrub typhus(Tsutsugamushi disease)						2	36
	Dengue fever	2	1		3	12	4	47
	Eastern equine encephalitis							
	Avian influenza (excluding H5N1)							
	Nipah virus infection							
	Japanese spotted fever						1	2
	Japanese encephalitis							
	Hantavirus pulmonary syndrome							
	Herpes B virus infection							
	Glanders							
	Brucellosis							1
	Venezuelan equine encephalitis							
	Hendra virus infection							
Epidemic typhus								
Botulism								
Malaria						4	14	
Tularemia								
Lyme disease							1	
Lyssavirus infection(excluding rabies)								
Rift valley fever								
Melioidosis						1	2	
Legionellosis	1	1			19	5	204	
Leptospirosis							2	
Rocky mountain spotted fever								

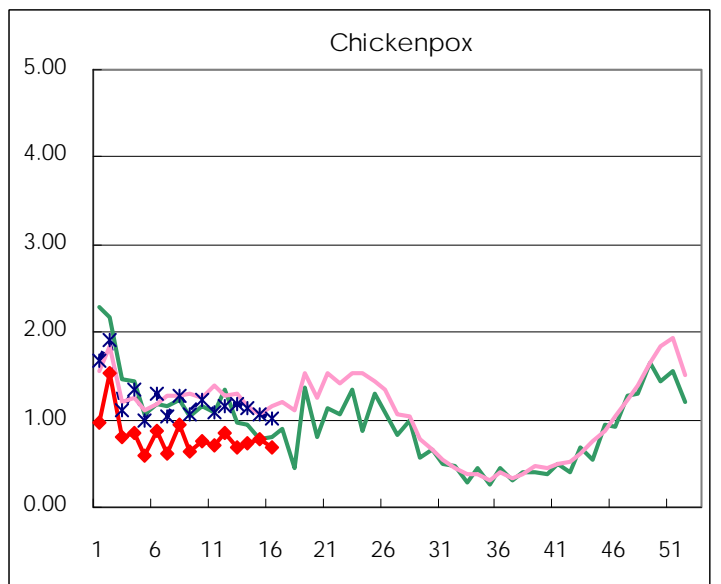
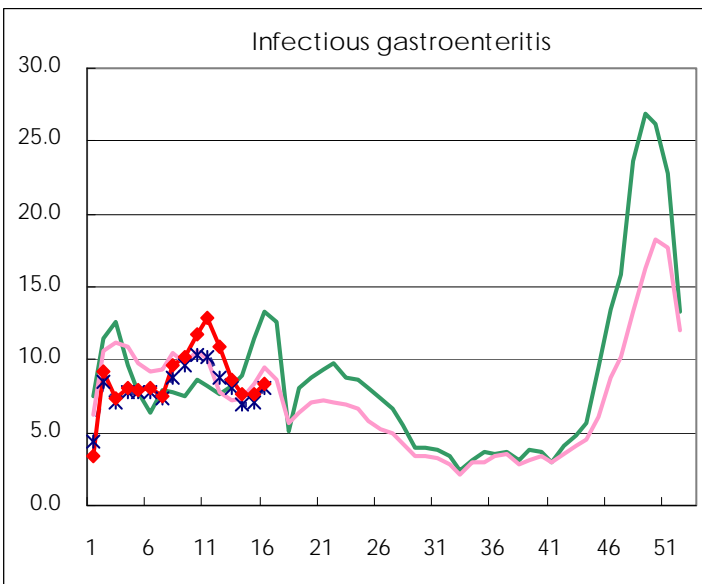
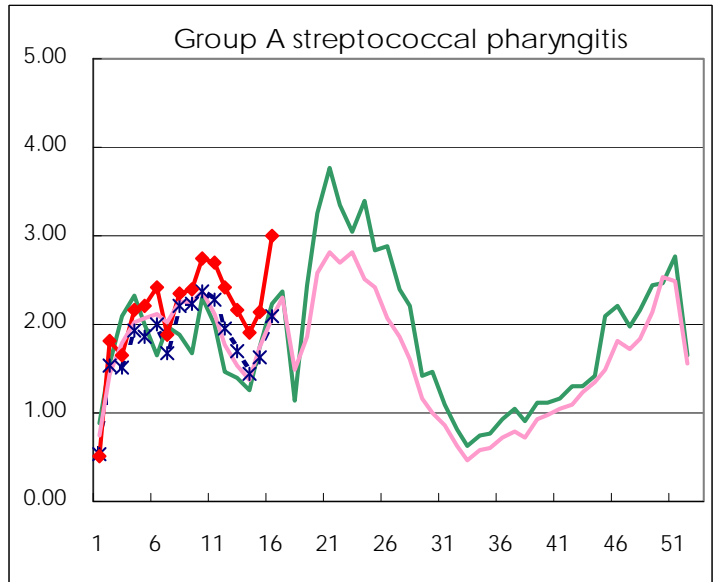
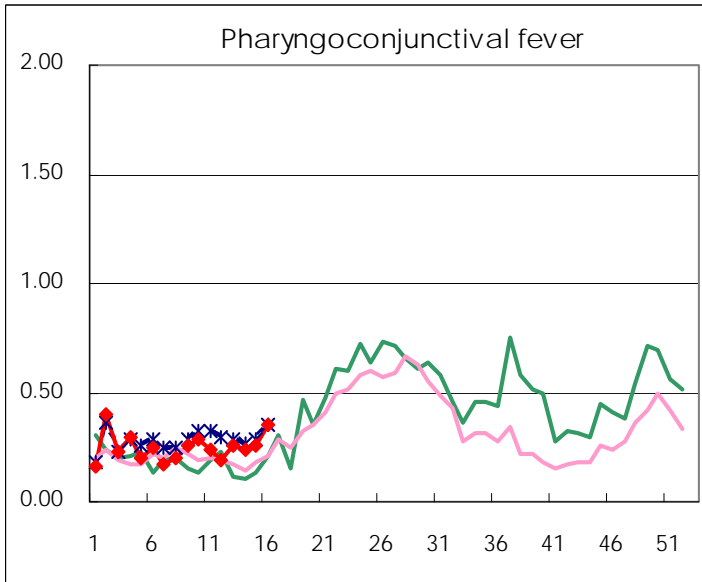
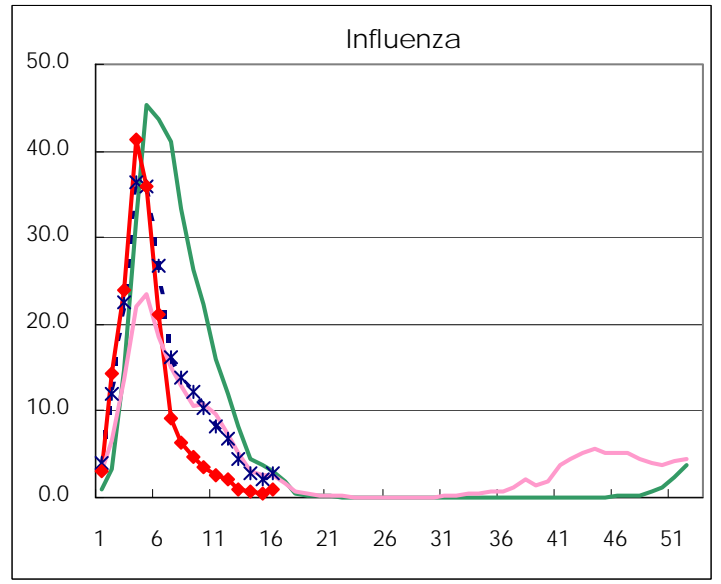
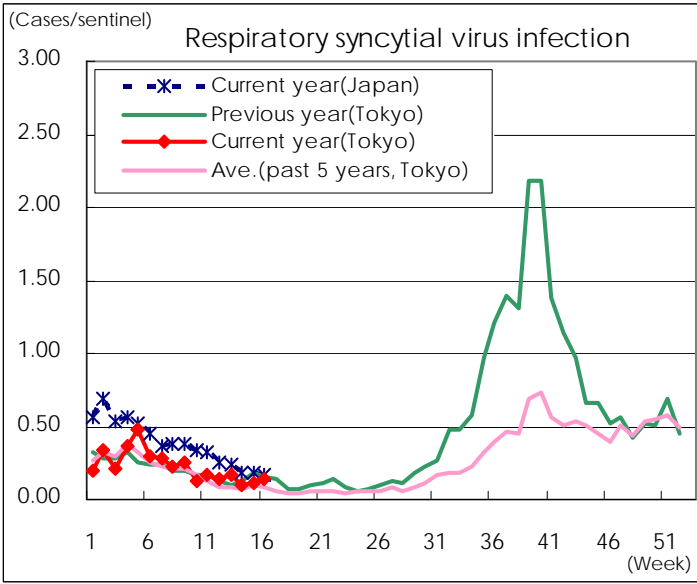
Category	Diseases	Tokyo				Japan		
		13th	14th	15th	16th	Cum 2013	16th	Cum 2013
V	Amebiasis	3	7	3	2	59	10	287
	Viral hepatitis(excluding hepatitis A and E)		3	2	1	21	2	67
	Acute encephalitis(excluding JE and WNE)	3		2	1	18	2	138
	Cryptosporidiosis							
	Creutzfeldt-Jakob disease	1				4	2	44
	Severe invasive streptococcal infections(TSLS)			2		8		63
	Acquired immunodeficiency syndrome (AIDS)	13	8	4	12	128	25	405
	Giardiasis		1	1		6	2	19
	Invasive <i>Haemophilus influenzae</i> disease		1	1		2	1	5
	Invasive meningococcal disease			1	1	2		2
	Invasive pneumococcal disease		1	1	3	5	18	70
	Meningococcal meningitis							2
	Congenital rubella syndrome	1				1	2	5
	Syphilis	7	7	9	7	109	10	291
	Tetanus				1	3	2	24
	Vancomycin-resistant <i>S. aureus</i> infection							
	Vancomycin-resistant <i>Enterococcus</i> infection					4		24
	Rubella	128	156	166	152	1,642	534	4,763
Measles	1	3	2		33	8	107	

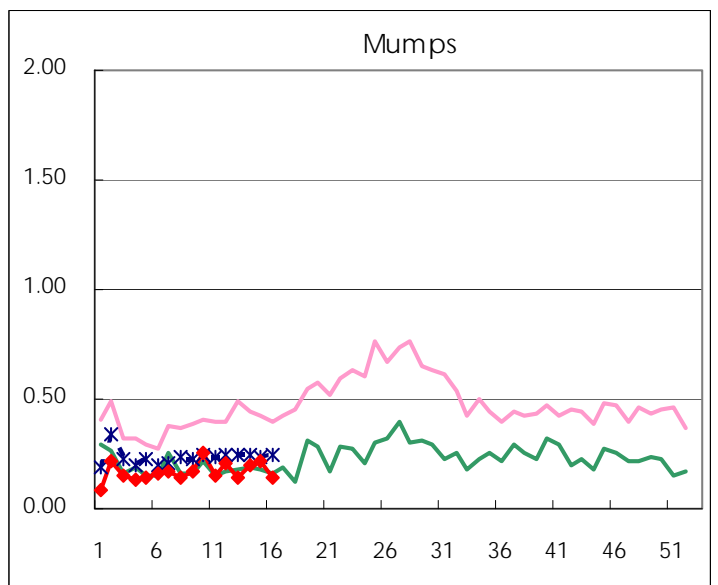
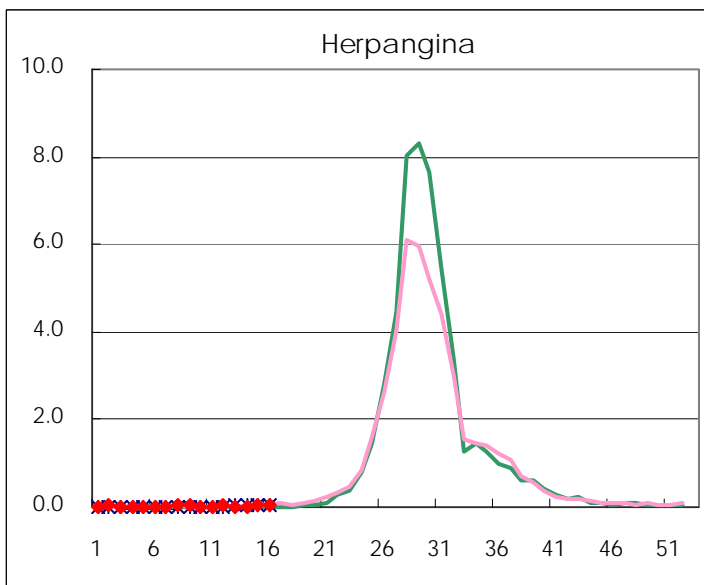
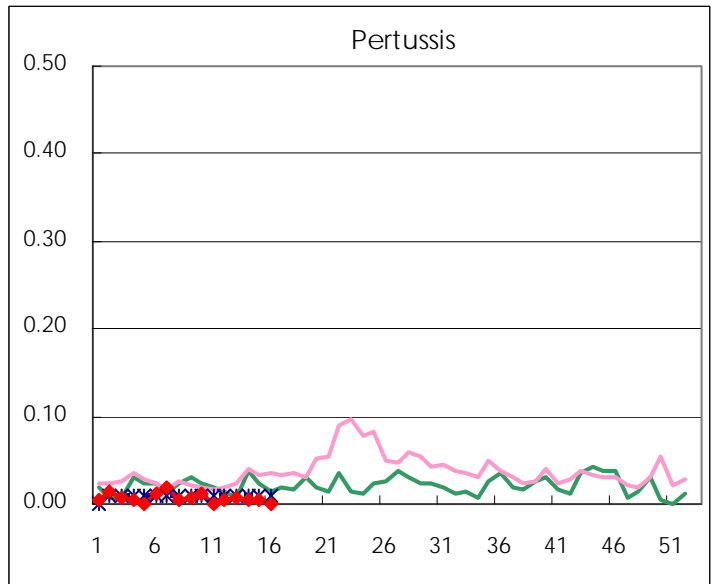
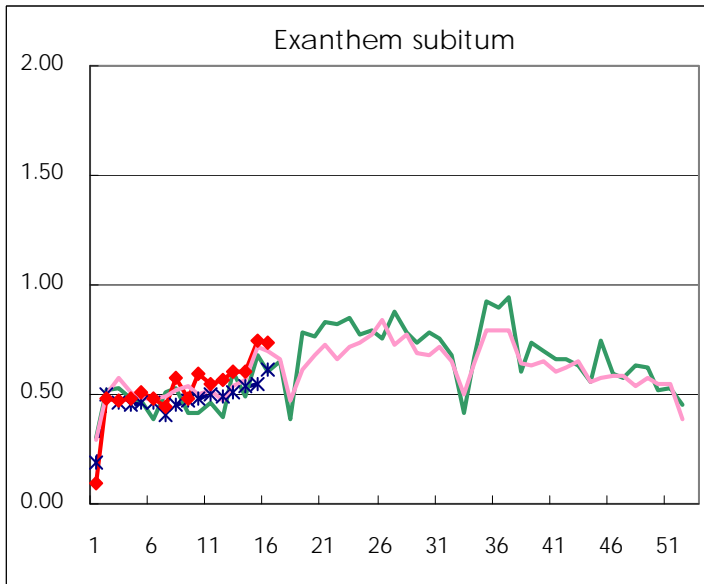
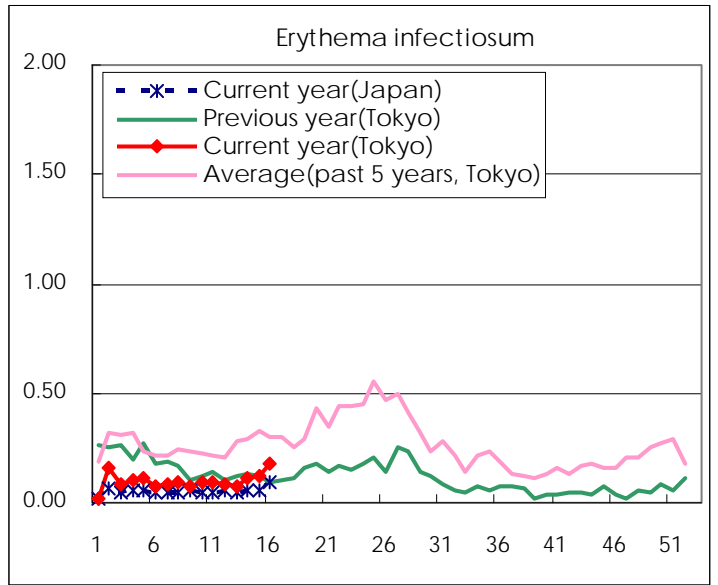
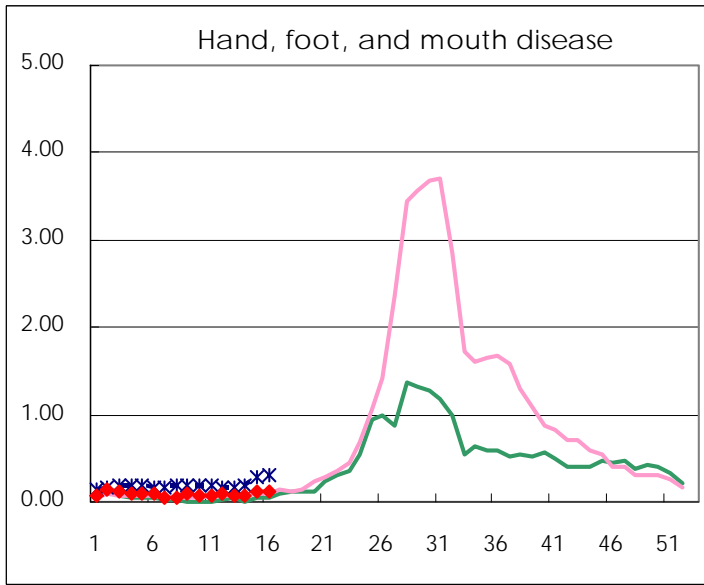
Number of patients with the diseases to be reported
by the designated clinics and hospitals

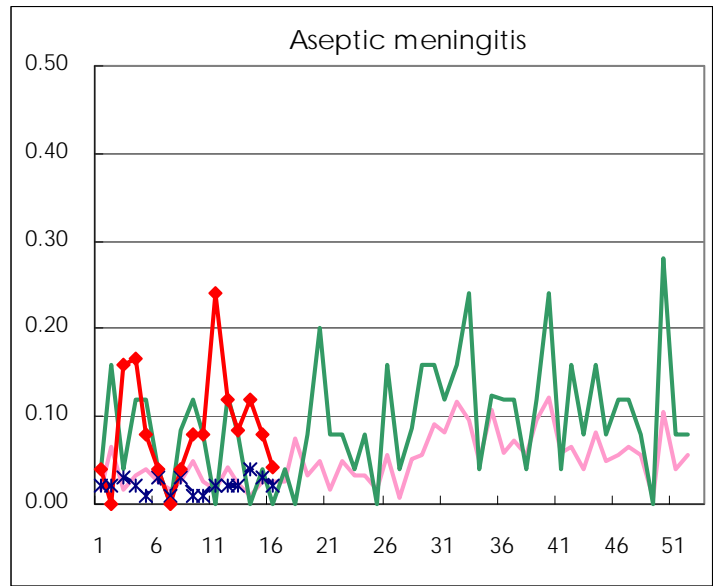
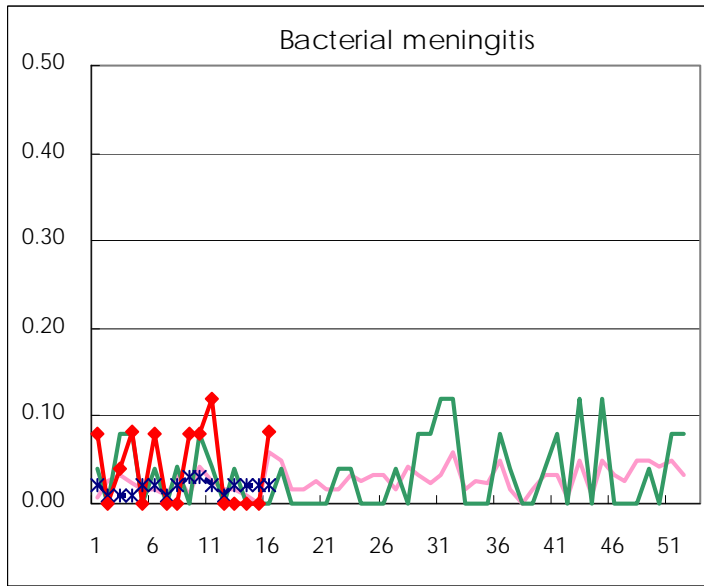
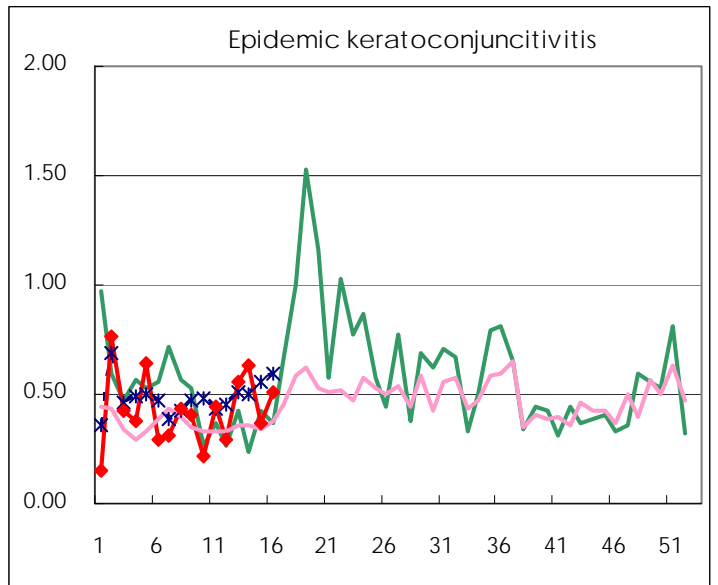
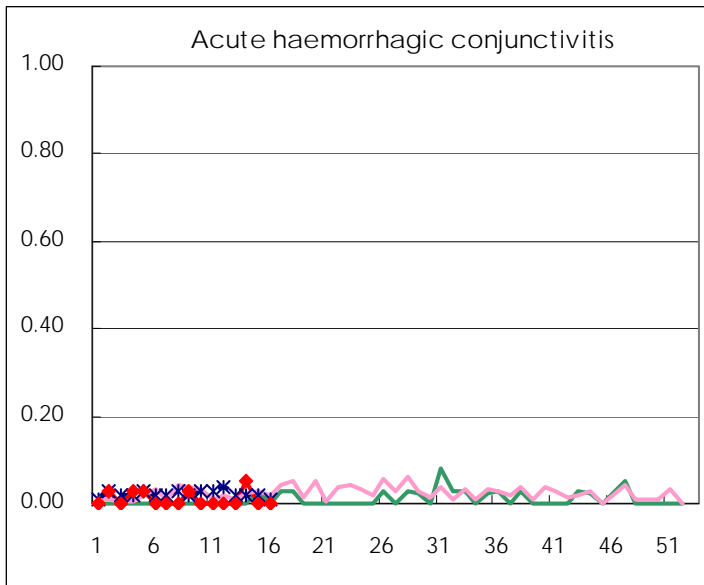
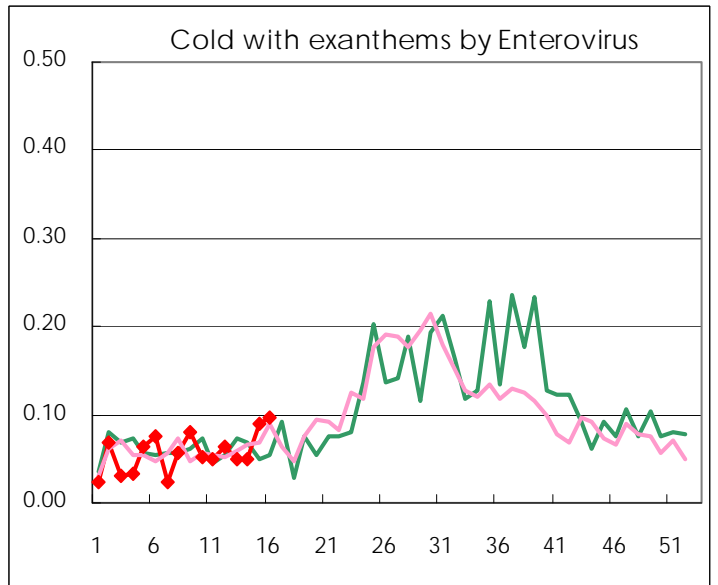
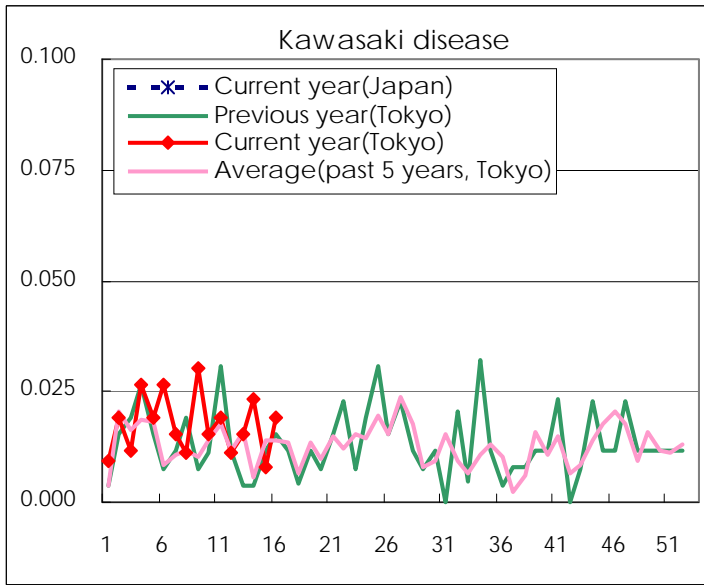
Diseases	Tokyo				
	13th	14th	15th	16th	/sentinel
Respiratory syncytial virus infection	46	26	28	36	0.14
Pharyngoconjunctival fever	67	63	68	92	0.35
Group A streptococcal pharyngitis	571	498	556	781	3.00
Infectious gastroenteritis	2,252	2,000	1,985	2,173	8.36
Chickenpox	179	189	204	176	0.68
Hand, foot, and mouth disease	19	18	29	33	0.13
Erythema infectiosum	20	29	31	47	0.18
Exanthem subitum	159	156	194	192	0.74
Pertussis	2	1	1		
Herpangina	2	3	9	7	0.03
Mumps	37	51	56	38	0.15
Kawasaki disease	4	6	2	5	0.02
Cold with exanthems by Enterovirus	13	13	23	25	0.10
Influenza	426	337	233	391	0.95
Acute hemorrhagic conjunctivitis		2			
Epidemic keratoconjunctivitis	21	24	14	20	0.51
Bacterial meningitis				2	0.08
Aseptic meningitis	2	3	2	1	0.04
Mycoplasma pneumonia	7	8	8	14	0.58
Chlamydial pneumonia (excluding psittacosis)	1	1			
Influenza-Associated Hospitalizations	2	2	2		

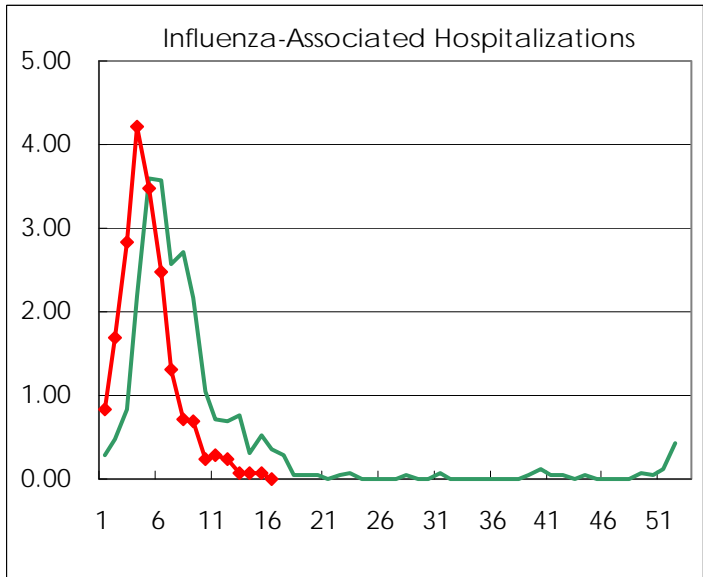
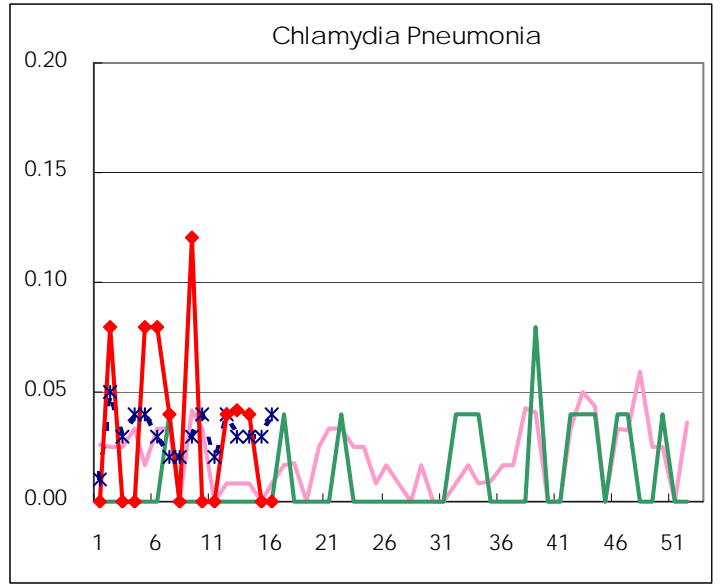
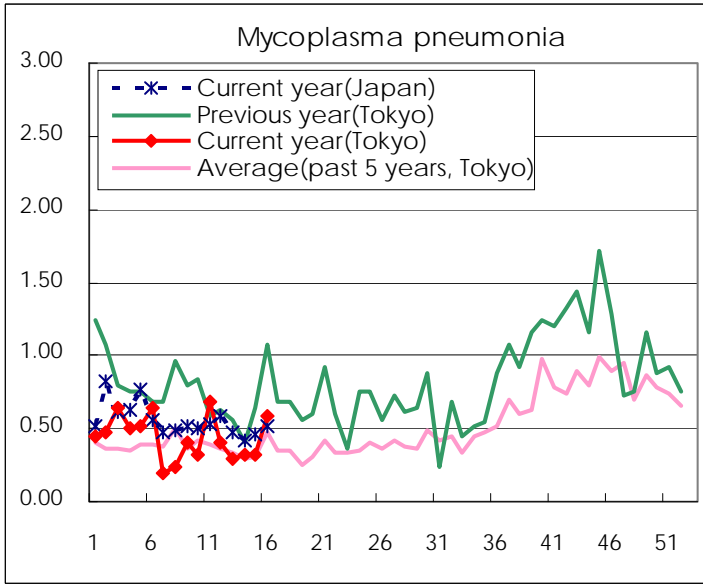
(Blank means 0.)

Disease Trend Graph (weekly reported cases per sentinel in comparison)









Number of sentinel facilities for weekly reporting		
Types of sentinels	Number of sentinels	Sentinels having reported
Pediatric	264	260
Influenza	419	411
Ophthalmic	39	39
Specially-designated	25	24

**Tokyo Metropolitan Government
Infectious Disease Surveillance Center**