

---

INFECTIOUS DISEASES WEEKLY REPORT

# TOKYO IDWR

Tokyo Metropolitan Infectious Disease Surveillance Center

---

## 2 May 2013 / Number 17

### Surveillance System in Tokyo, Japan

The infectious diseases which all physicians must report

All physicians must report to health centers the incidence of the diseases which are shown at page one. Health centers electronically report the individual cases to Tokyo Metropolitan Infectious Disease Surveillance Center.

The infectious diseases required to be reported by the sentinels

The numbers of patients who visit the sentinel clinics or hospitals during a week are reported to health centers in Tokyo. And they electronically report the numbers to Tokyo Metropolitan Infectious Disease Surveillance Center. We have about 500 sentinel clinics and hospitals in Tokyo.

1st Week is early January and 52nd Week is end of December.

Tokyo Metropolitan Institute of Public Health

TEL:81-3-3363-3213 FAX:81-3-5332-7365

e-mail:[idsc@tokyo-eiken.go.jp](mailto:idsc@tokyo-eiken.go.jp)

URL:[idsc.tokyo-eiken.go.jp/](http://idsc.tokyo-eiken.go.jp/)

---

## Number of patients with the diseases which all physicians must report

Category	Diseases	Tokyo				Japan		
		14th	15th	16th	17th	Cum 2013	17th	Cum 2013
I	Ebola hemorrhagic fever							
	Crimean-Congo hemorrhagic fever							
	Smallpox							
	South American hemorrhagic fever							
	Plague							
	Marburg disease							
	Lassa fever							
II	Acute poliomyelitis							
	Tuberculosis	92	82	51	51	1,193	327	7,775
	Diphtheria							
	Severe Acute Respiratory Syndrome(SARS)							
	Avian influenza H5N1							
III	Cholera							
	Shigellosis		1			9	1	39
	Enterohemorrhagic Escherichia coli infection	2	2	1	3	22	15	226
	Typhoid fever	1		1		10	1	23
	Paratyphoid fever			2		8	2	23
IV	Hepatitis E	1	1	1		17		47
	West Nile fever							
	Hepatitis A	1		1	2	9	4	57
	Echinococcosis							6
	Yellow fever							
	Psittacosis					2	1	4
	Omsk hemorrhagic fever							
	Relapsing fever							
	Kyasanur forest disease							
	Q fever			1		1		1
	Rabies							
	Coccidioidomycosis					2		2
	Monkeypox							
	Severe Fever with Thrombocytopenia Syndrome						1	9
	Hemorrhagic fever with renal syndrome							
	Western equine encephalitis							
	Tick-borne encephalitis							
	Anthrax							
	Chikungunya fever					2	1	6
	Scrub typhus(Tsutsugamushi disease)						2	39
	Dengue fever	1		3		12	2	48
	Eastern equine encephalitis							
	Avian influenza (excluding H5N1)							
	Nipah virus infection							
	Japanese spotted fever							2
	Japanese encephalitis							
	Hantavirus pulmonary syndrome							
	Herpes B virus infection							
	Glanders							
	Brucellosis							1
	Venezuelan equine encephalitis							
	Hendra virus infection							
	Epidemic typhus							
Botulism								
Malaria						4	14	
Tularemia								
Lyme disease							1	
Lyssavirus infection(excluding rabies)								
Rift valley fever								
Melioidosis						1	2	
Legionellosis	1					19	8	212
Leptospirosis								2
Rocky mountain spotted fever								

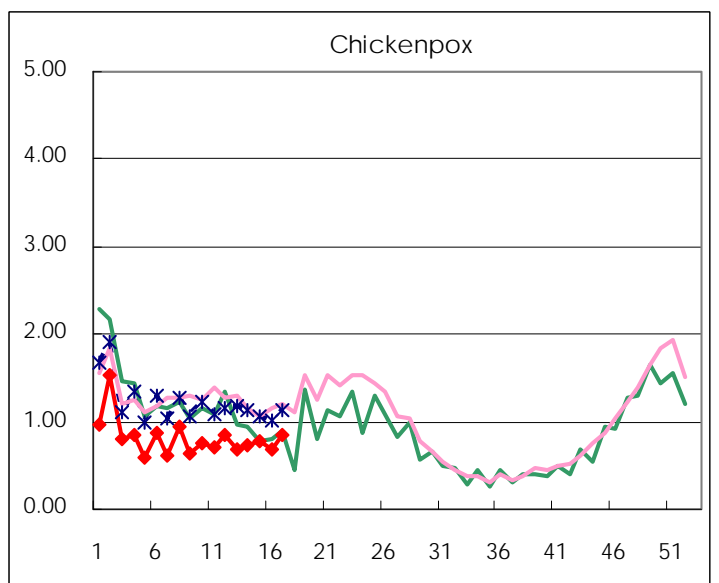
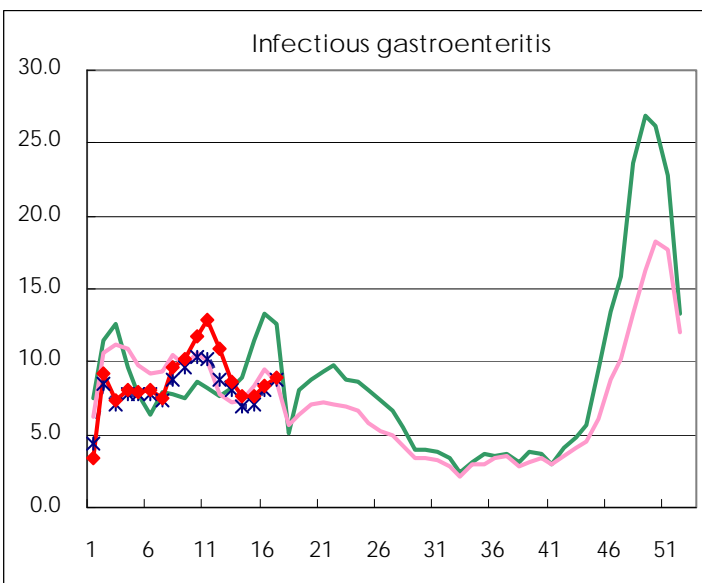
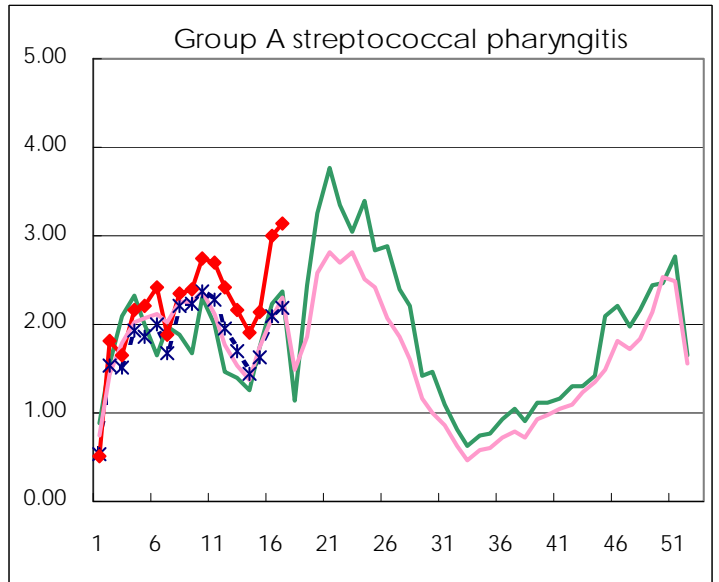
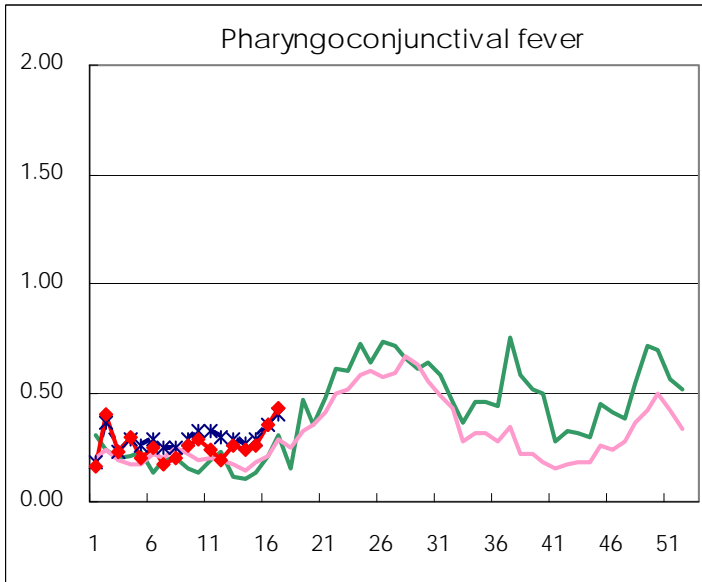
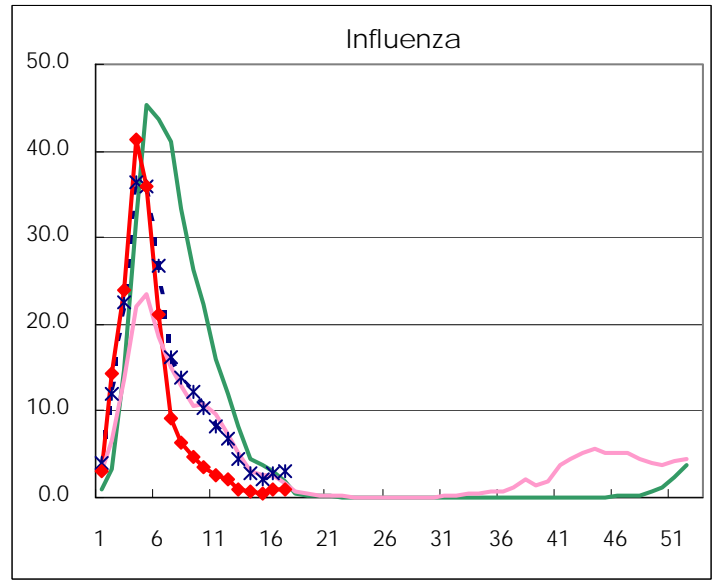
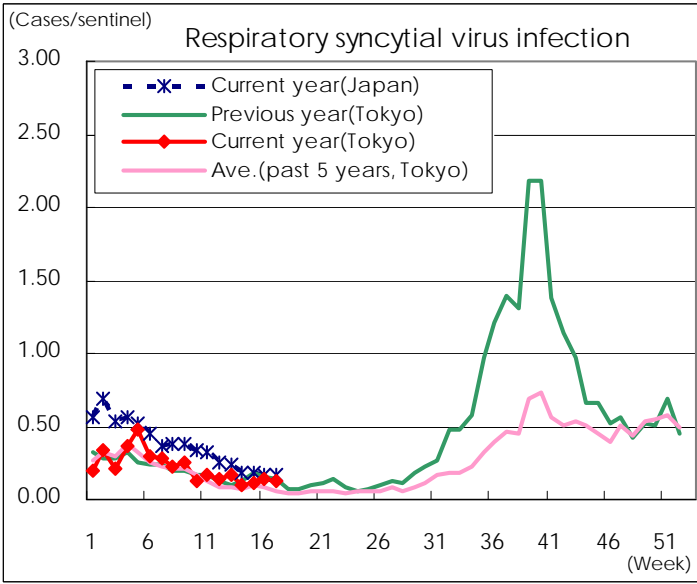
Category	Diseases	Tokyo				Japan		
		14th	15th	16th	17th	Cum 2013	17th	Cum 2013
V	Amebiasis	7	3	2	7	66	16	311
	Viral hepatitis(excluding hepatitis A and E)	3	3	1	3	25	5	76
	Acute encephalitis(excluding JE and WNE)		2	1	2	20	5	149
	Cryptosporidiosis							
	Creutzfeldt-Jakob disease				1	5	4	52
	Severe invasive streptococcal infections(TSLS)		2			8	4	67
	Acquired immunodeficiency syndrome (AIDS)	8	4	13	8	137	21	434
	Giardiasis	1	1		2	8	3	23
	Invasive <i>Haemophilus influenzae</i> disease	1	1			2		5
	Invasive meningococcal disease		1	1		2		2
	Invasive pneumococcal disease	1	1	3	4	9	23	107
	Meningococcal meningitis	/	/	/	/			2
	Congenital rubella syndrome					1		5
	Syphilis	7	9	7	12	121	21	321
	Tetanus			1		3	2	28
	Vancomycin-resistant <i>S. aureus</i> infection							
	Vancomycin-resistant <i>Enterococcus</i> infection					4		24
	Rubella	156	166	157	173	1,821	526	5,442
Measles	3	2		1	34	16	119	

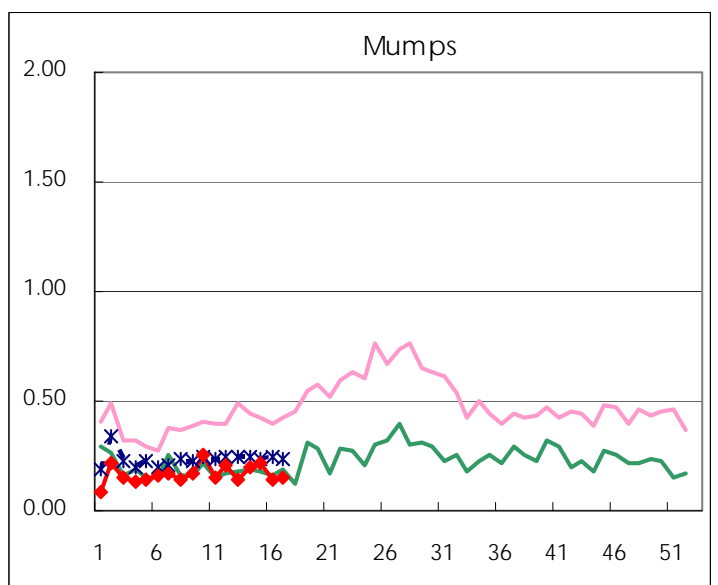
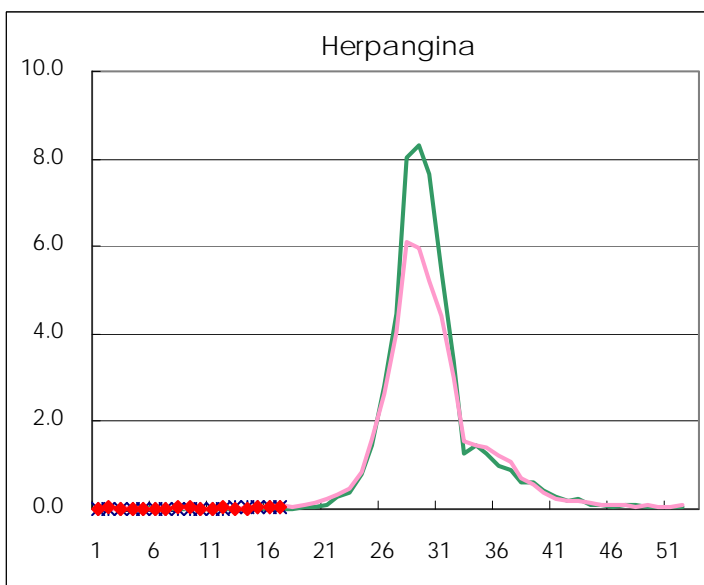
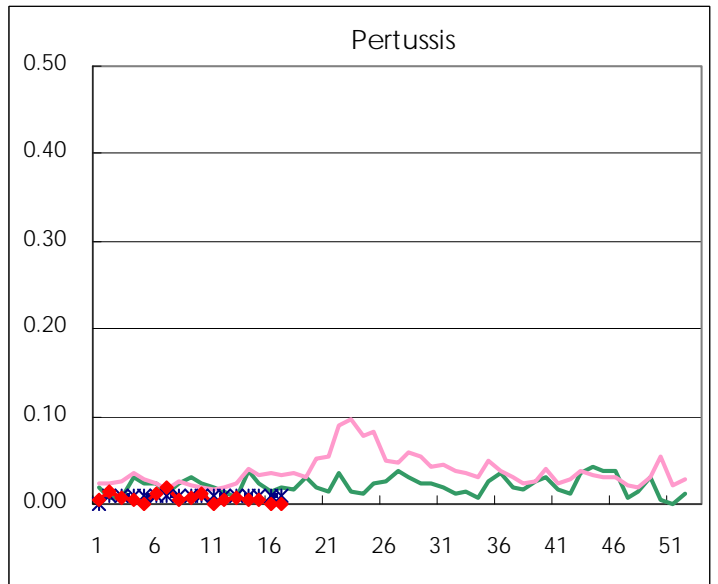
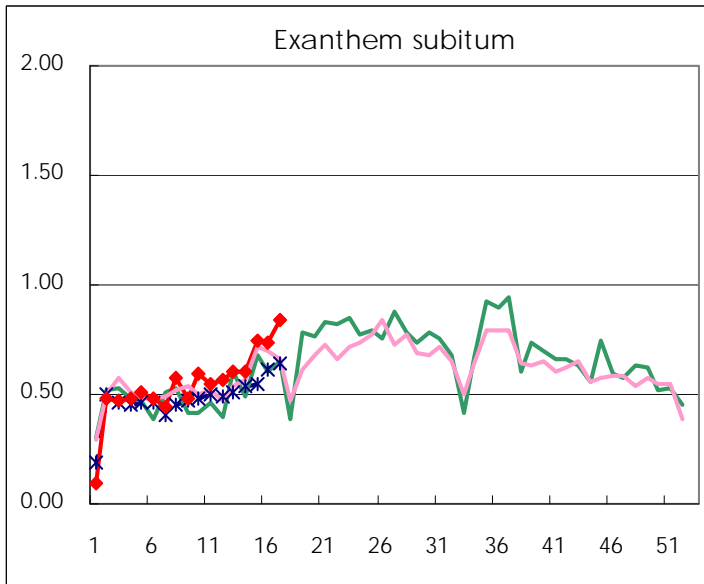
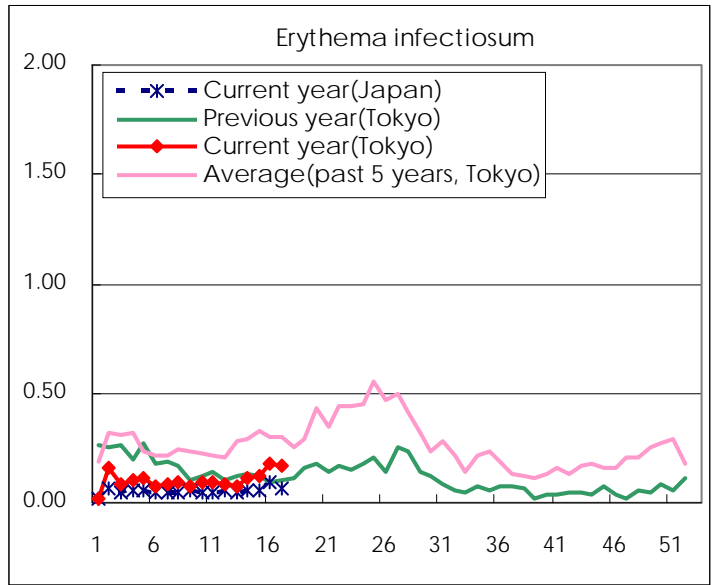
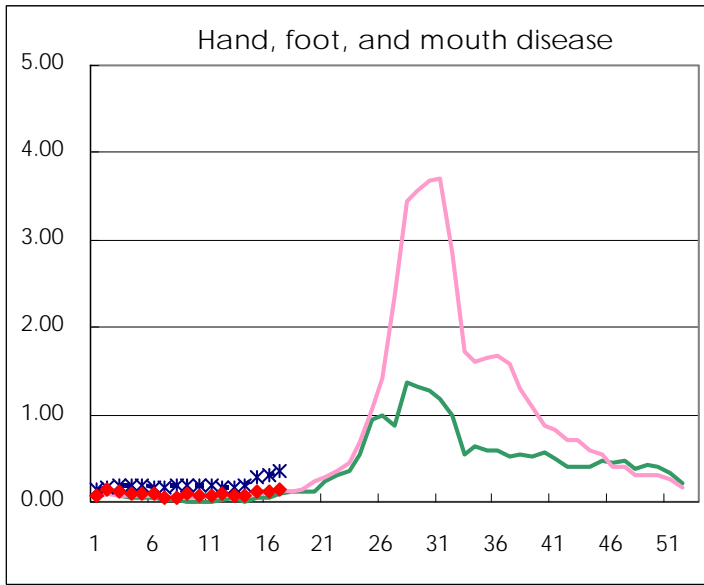
Number of patients with the diseases to be reported  
by the designated clinics and hospitals

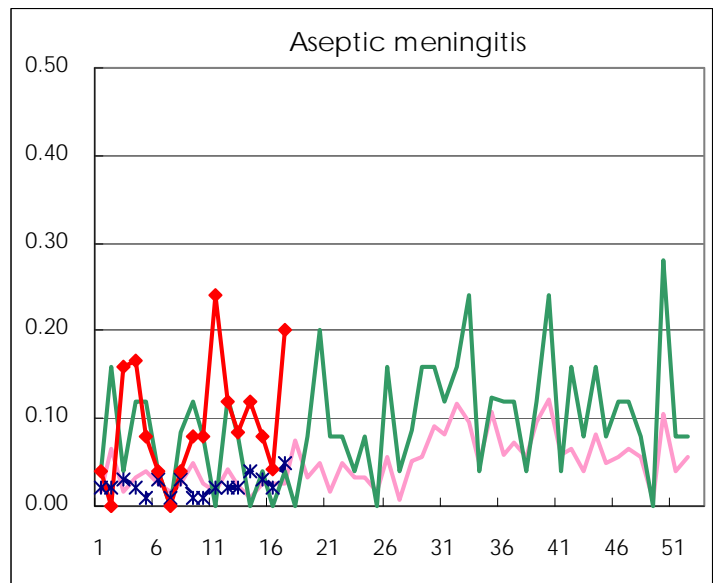
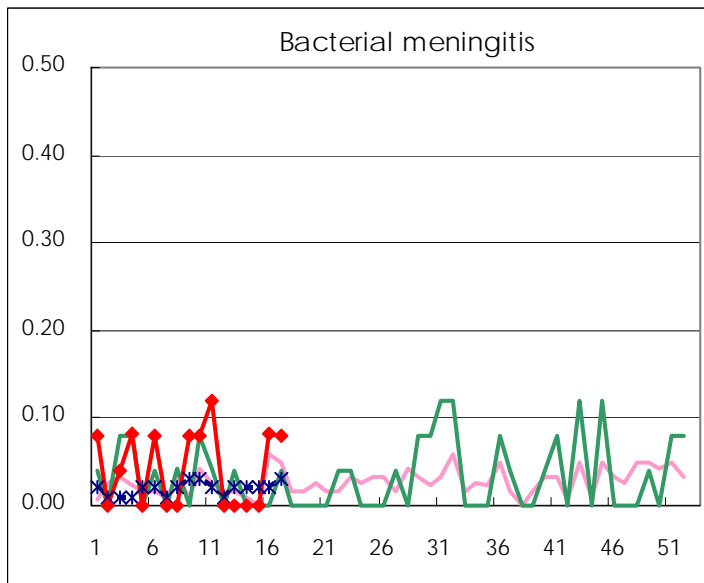
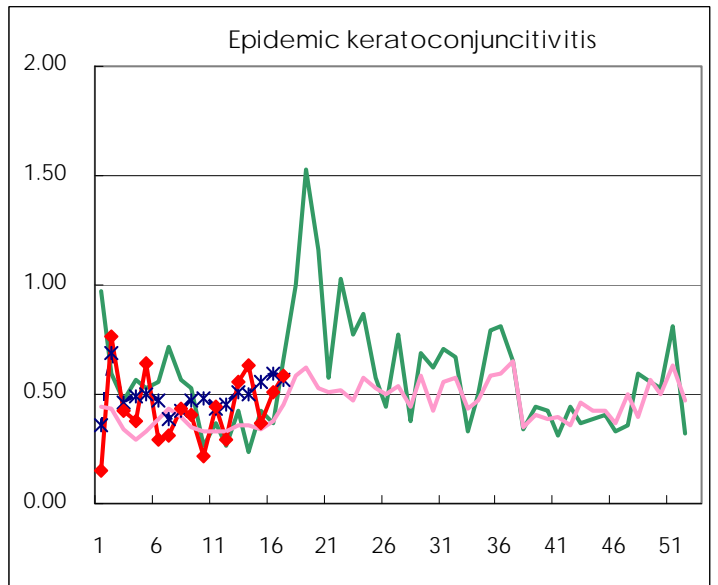
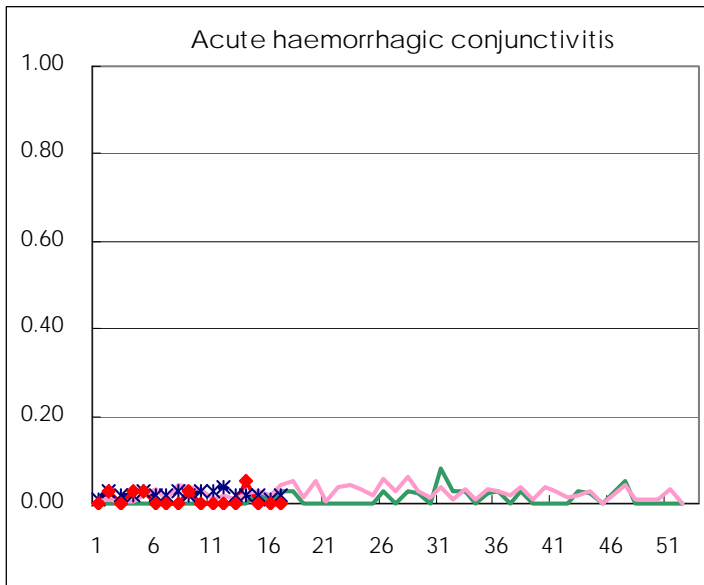
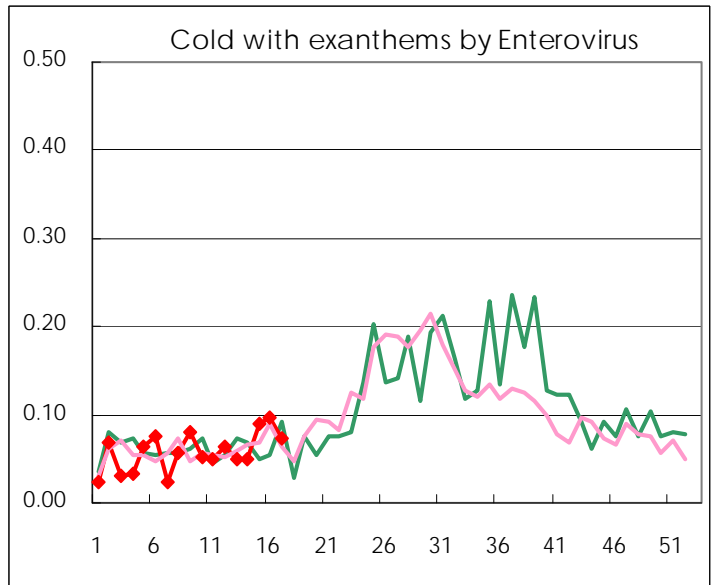
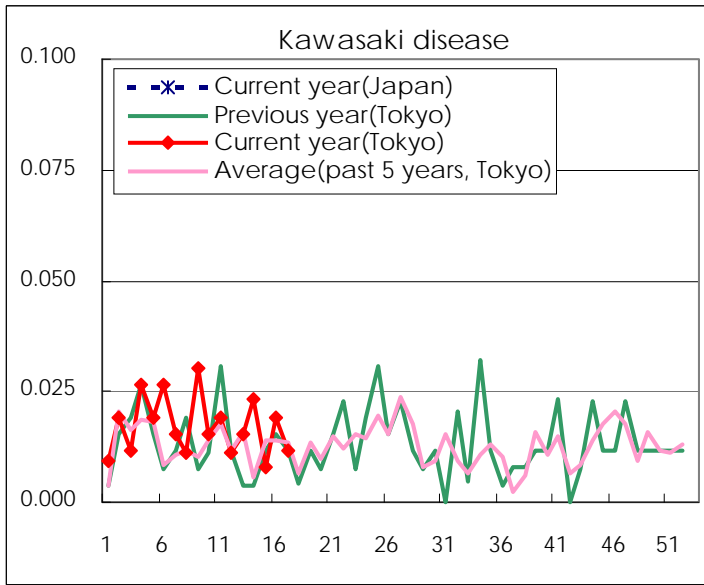
Diseases	Tokyo				
	14th	15th	16th	17th	/sentinel
Respiratory syncytial virus infection	26	28	36	32	0.12
Pharyngoconjunctival fever	63	68	92	110	0.43
Group A streptococcal pharyngitis	498	556	781	811	3.14
Infectious gastroenteritis	2,000	1,985	2,186	2,299	8.91
Chickenpox	189	204	176	218	0.84
Hand, foot, and mouth disease	18	29	33	36	0.14
Erythema infectiosum	29	31	47	44	0.17
Exanthem subitum	156	194	192	217	0.84
Pertussis	1	1			
Herpangina	3	9	7	14	0.05
Mumps	51	56	38	38	0.15
Kawasaki disease	6	2	5	3	0.01
Cold with exanthems by Enterovirus	13	23	25	19	0.07
Influenza	337	233	391	427	1.05
Acute hemorrhagic conjunctivitis	2				
Epidemic keratoconjunctivitis	24	14	20	21	0.58
Bacterial meningitis			2	2	0.08
Aseptic meningitis	3	2	1	5	0.20
Mycoplasma pneumonia	8	8	14	17	0.68
Chlamydial pneumonia (excluding psittacosis)	1				
Influenza-Associated Hospitalizations	2	2		5	0.20

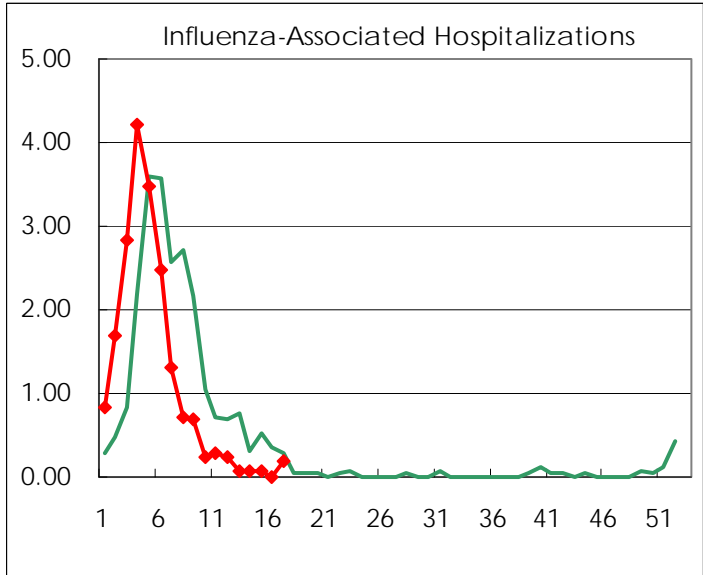
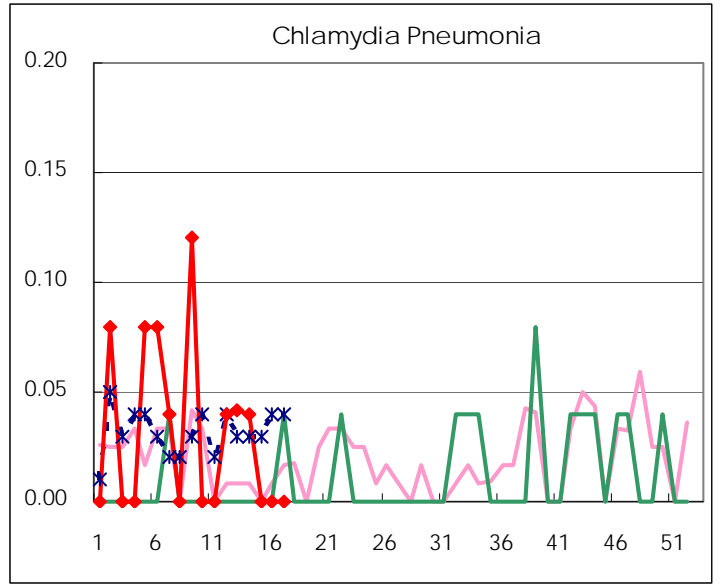
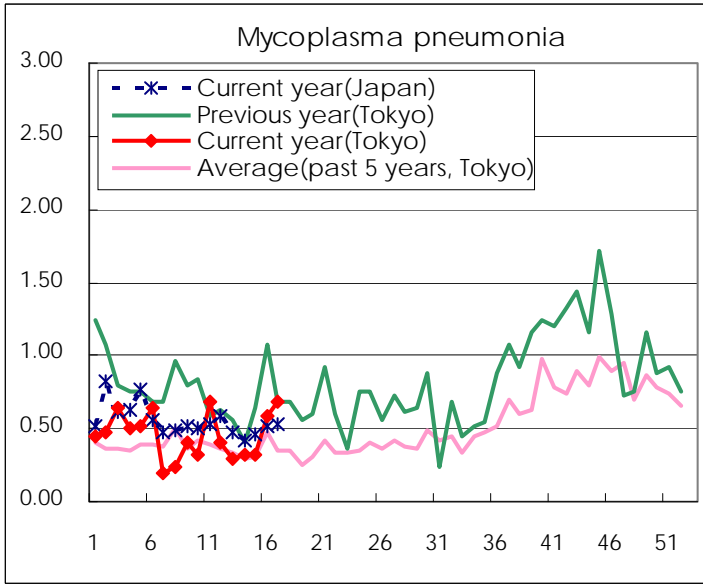
( Blank means 0. )

# Disease Trend Graph (weekly reported cases per sentinel in comparison)









Number of sentinel facilities for weekly reporting		
Types of sentinels	Number of sentinels	Sentinels having reported
Pediatric	264	258
Influenza	419	407
Ophthalmic	39	36
Specially-designated	25	25

**Tokyo Metropolitan Government  
Infectious Disease Surveillance Center**