
INFECTIOUS DISEASES WEEKLY REPORT

TOKYO IDWR

Tokyo Metropolitan Infectious Disease Surveillance Center

9 May 2013 / Number 18

Surveillance System in Tokyo, Japan

The infectious diseases which all physicians must report

All physicians must report to health centers the incidence of the diseases which are shown at page one. Health centers electronically report the individual cases to Tokyo Metropolitan Infectious Disease Surveillance Center.

The infectious diseases required to be reported by the sentinels

The numbers of patients who visit the sentinel clinics or hospitals during a week are reported to health centers in Tokyo. And they electronically report the numbers to Tokyo Metropolitan Infectious Disease Surveillance Center. We have about 500 sentinel clinics and hospitals in Tokyo.

1st Week is early January and 52nd Week is end of December.

Tokyo Metropolitan Institute of Public Health

TEL:81-3-3363-3213 FAX:81-3-5332-7365

e-mail:idsc@tokyo-eiken.go.jp

URL:idsc.tokyo-eiken.go.jp/

Number of patients with the diseases which all physicians must report

Category	Diseases	Tokyo				Japan		
		15th	16th	17th	18th	Cum 2013	18th	Cum 2013
I	Ebola hemorrhagic fever							
	Crimean-Congo hemorrhagic fever							
	Smallpox							
	South American hemorrhagic fever							
	Plague							
	Marburg disease							
	Lassa fever							
II	Acute poliomyelitis							
	Tuberculosis	84	56	72	46	1,270	194	8,209
	Diphtheria							
	Severe Acute Respiratory Syndrome(SARS)							
	Avian influenza H5N1							
※	Avian influenza H7N9	/	/	/	/	/	/	/
III	Cholera							
	Shigellosis	1		1		10		40
	Enterohemorrhagic Escherichia coli infection	2	1	4		23	14	245
	Typhoid fever		1			10		23
	Paratyphoid fever		2			8		23
IV	Hepatitis E	1	1			17		48
	West Nile fever							
	Hepatitis A		1	2		9	1	58
	Echinococcosis						1	7
	Yellow fever							
	Psittacosis					2		4
	Omsk hemorrhagic fever							
	Relapsing fever							
	Kyasanur forest disease							
	Q fever		1			1		1
	Rabies							
	Coccidioidomycosis					2		2
	Monkeypox							
	Severe Fever with Thrombocytopenia Syndrome							9
	Hemorrhagic fever with renal syndrome							
	Western equine encephalitis							
	Tick-borne encephalitis							
	Anthrax							
	Chikungunya fever					2		6
	Scrub typhus(Tsutsugamushi disease)						4	43
	Dengue fever		3	1	1	14		49
	Eastern equine encephalitis							
	Avian influenza (excluding H5N1)							
	Nipah virus infection							
	Japanese spotted fever							2
	Japanese encephalitis							
	Hantavirus pulmonary syndrome							
	Herpes B virus infection							
	Glanders							
	Brucellosis							1
	Venezuelan equine encephalitis							
	Hendra virus infection							
	Epidemic typhus							
Botulism								
Malaria					4	1	15	
Tularemia								
Lyme disease							1	
Lyssavirus infection(excluding rabies)								
Rift valley fever								
Melioidosis					1		2	
Legionellosis				1	20	4	218	
Leptospirosis							2	
Rocky mountain spotted fever								

Category	Diseases	Tokyo					Japan	
		15th	16th	17th	18th	Cum 2013	18th	Cum 2013
V	Amebiasis	3	2	7	4	70	12	330
	Viral hepatitis(excluding hepatitis A and E)	3	1	3		25	2	80
	Acute encephalitis(excluding JE and WNE)	2	1	2		20		152
	Cryptosporidiosis							
	Creutzfeldt-Jakob disease			1		5	4	58
	Severe invasive streptococcal infections(TSLS)	2			2	10	1	69
	Acquired immunodeficiency syndrome (AIDS)	4	13	8	7	144	8	453
	Giardiasis	1		2	1	9		26
	Invasive <i>Haemophilus influenzae</i> disease	1			1	3	3	9
	Invasive meningococcal disease	1	1		1	3		3
	Invasive pneumococcal disease	1	3	4	2	12	6	130
	Meningococcal meningitis							2
	Congenital rubella syndrome					1		5
	Syphilis	9	8	13	5	128	8	340
	Tetanus		1			3	1	30
	Vancomycin-resistant <i>S. aureus</i> infection							
	Vancomycin-resistant <i>Enterococcus</i> infection					4		24
	Rubella	166	159	178	90	1,918	366	5,964
Measles	3		3	1	38	1	119	

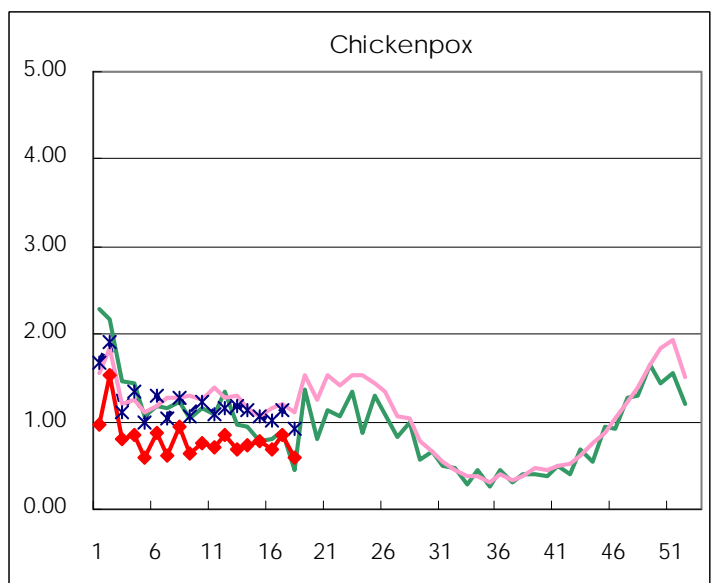
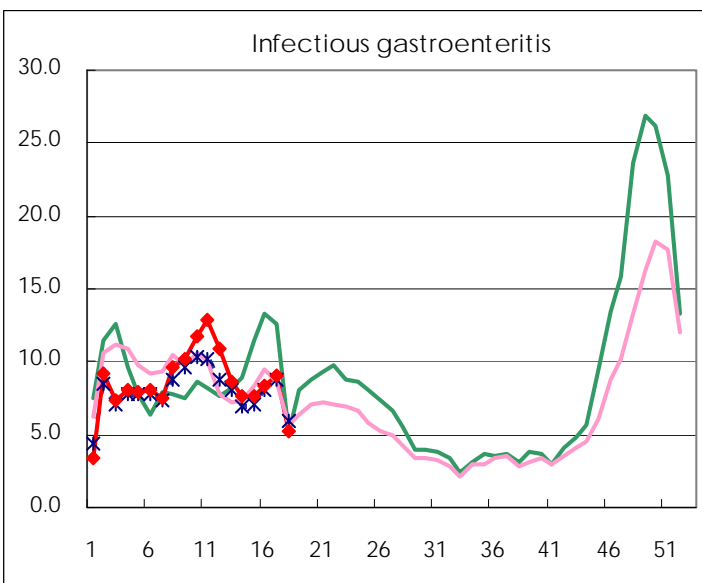
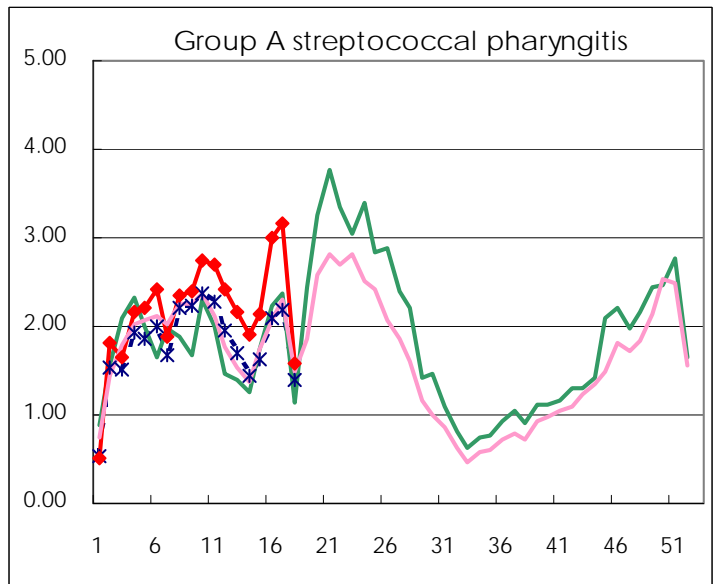
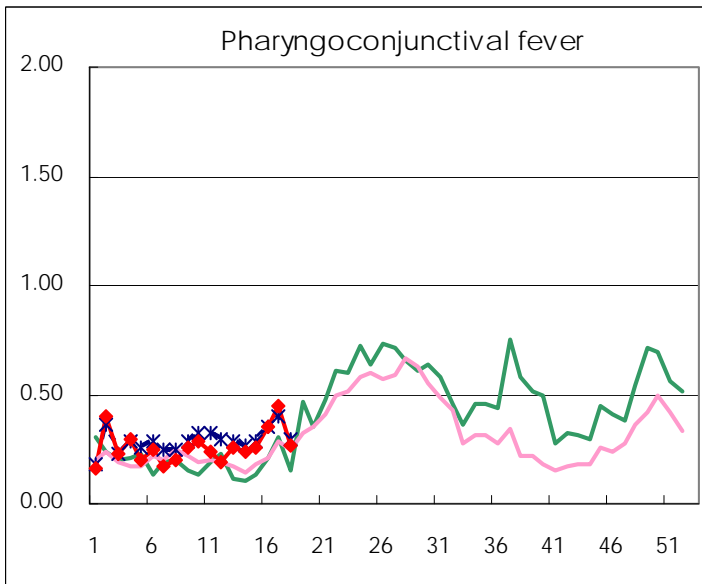
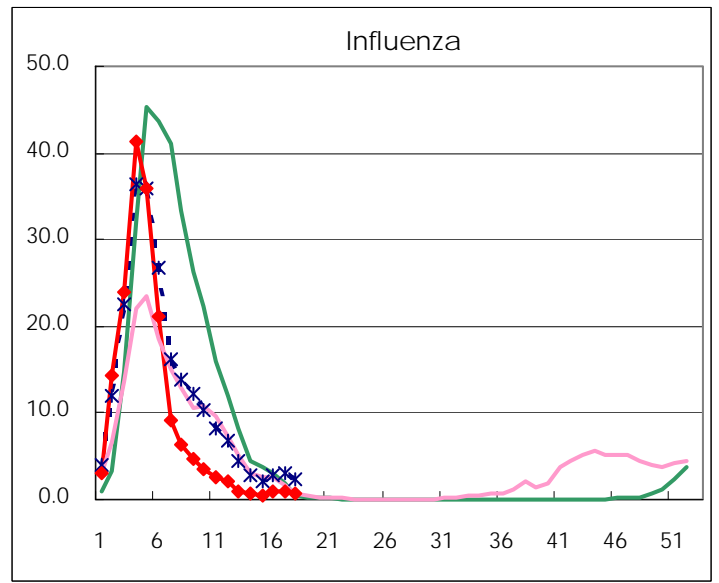
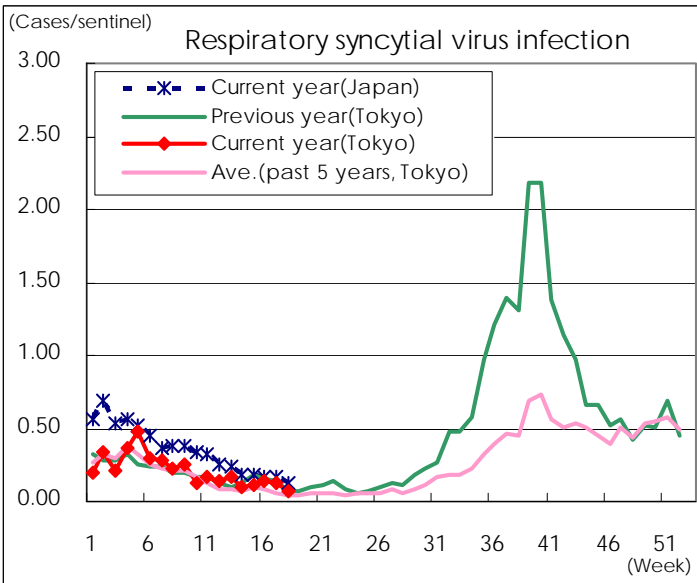
※ Designated infectious disease

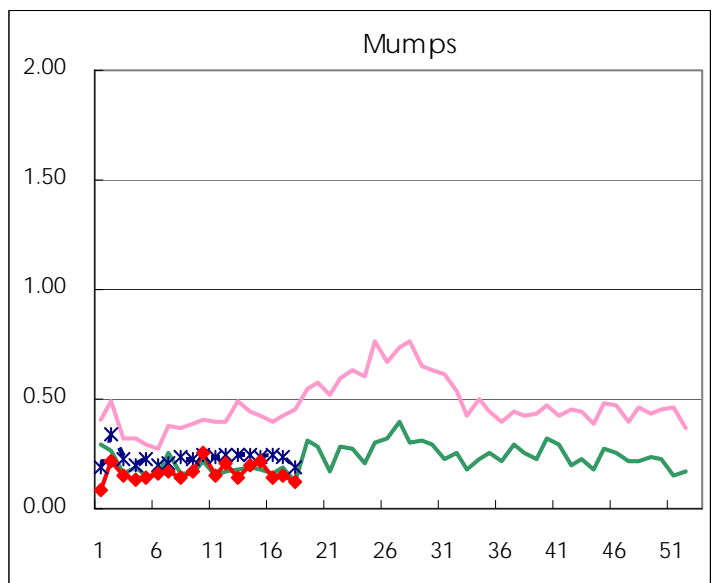
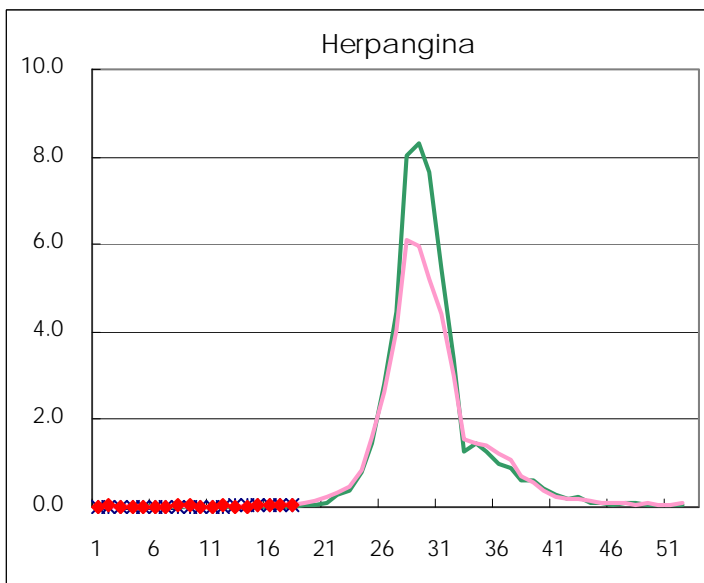
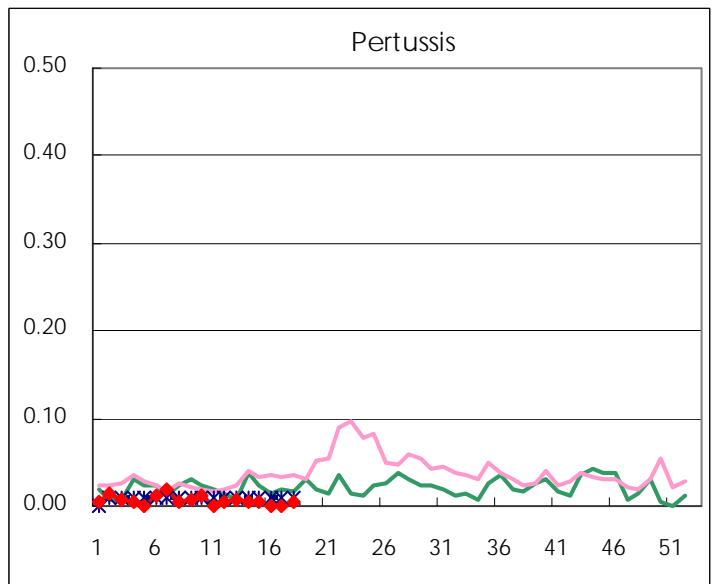
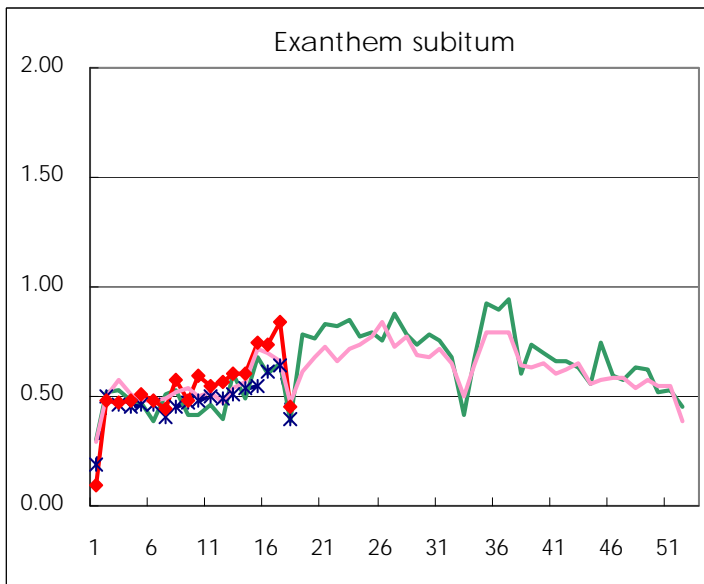
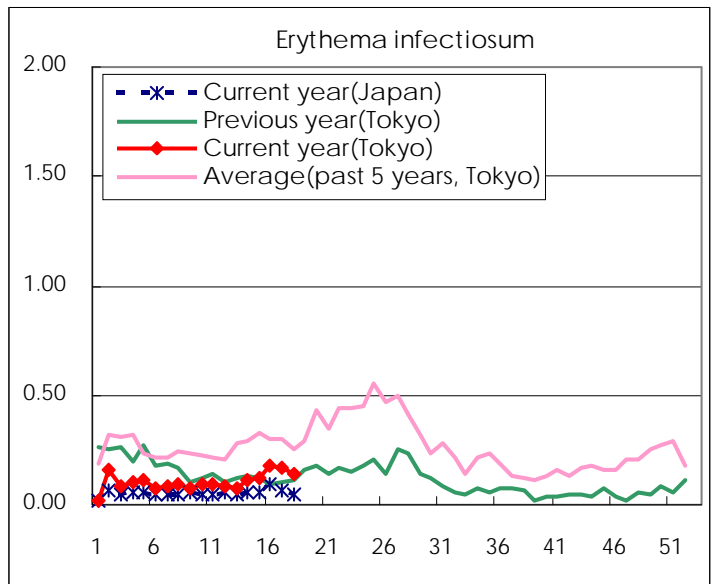
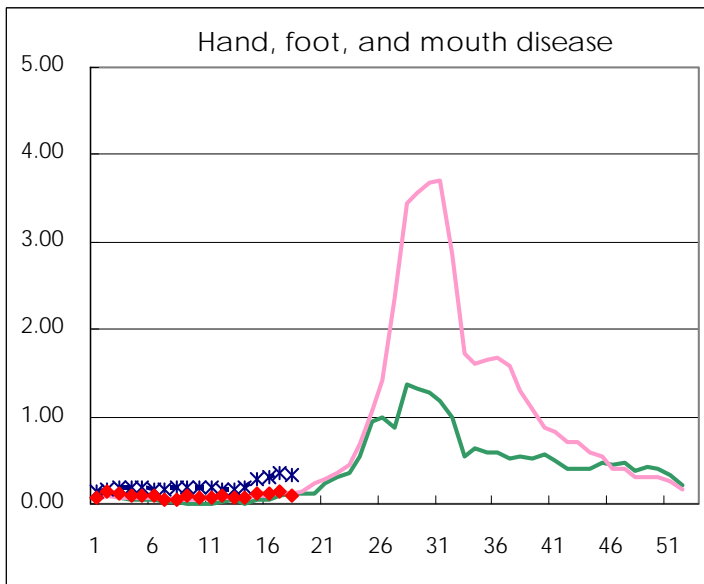
Number of patients with the diseases to be reported
by the designated clinics and hospitals

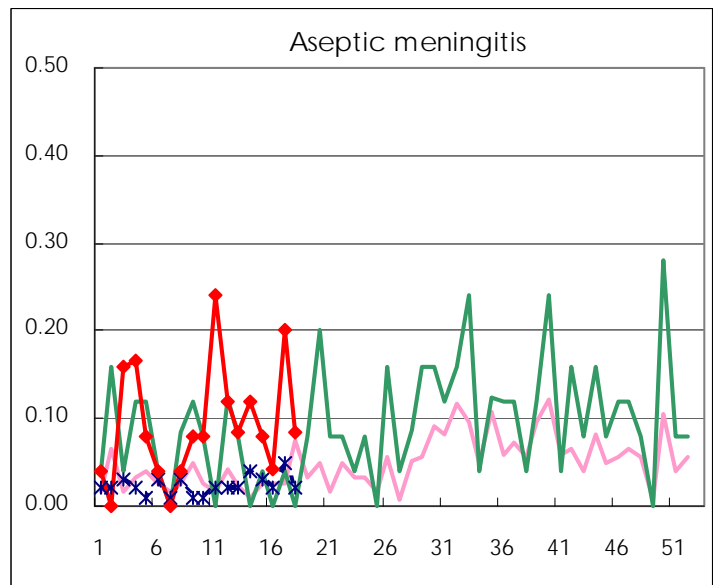
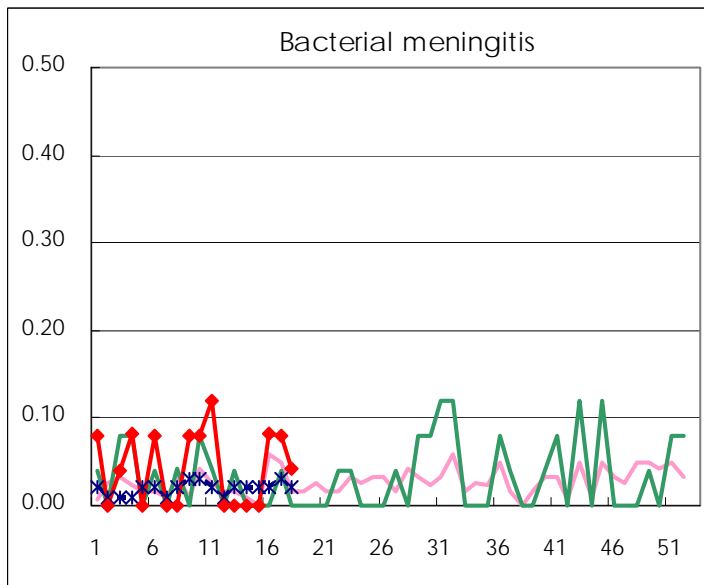
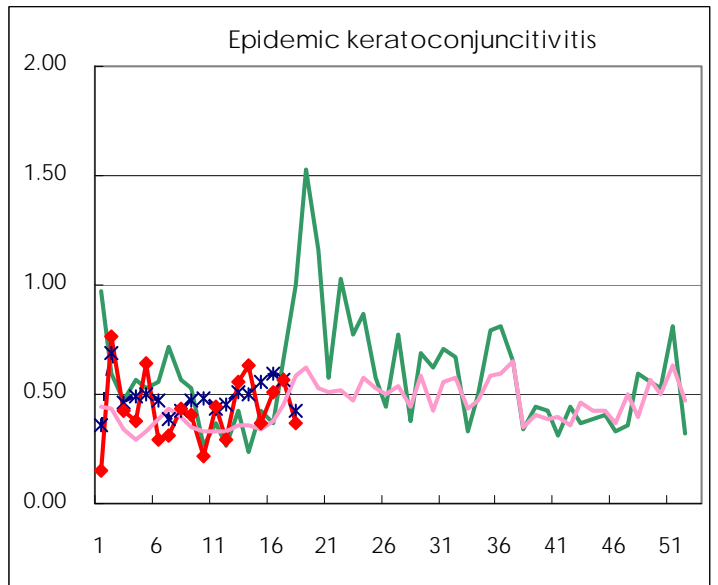
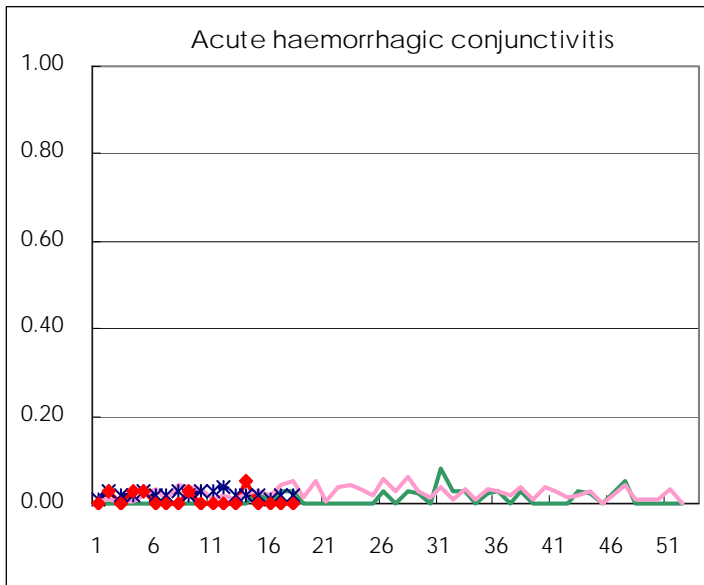
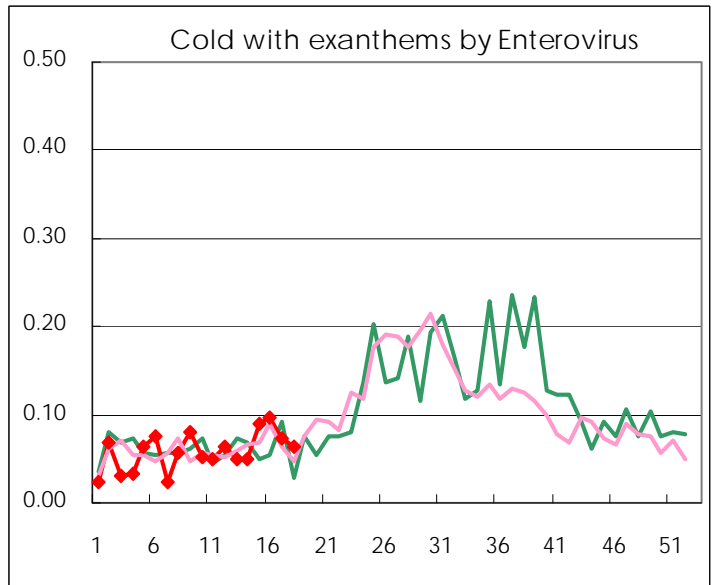
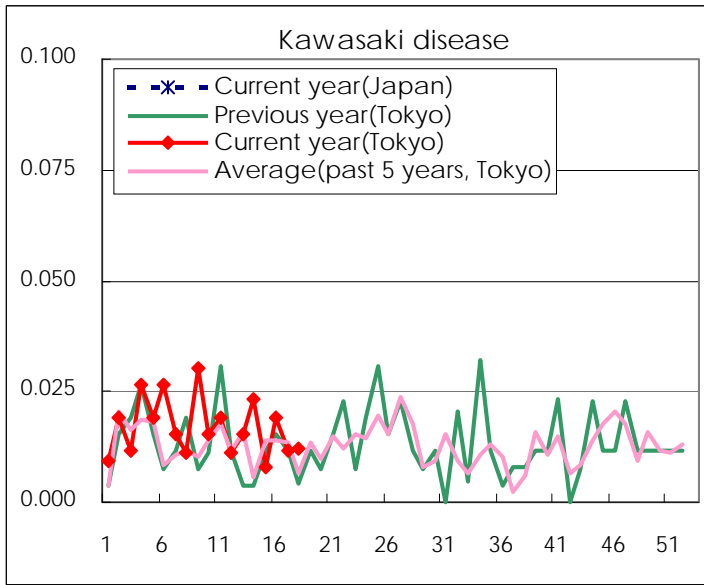
Diseases	Tokyo				
	15th	16th	17th	18th	/sentinel
Respiratory syncytial virus infection	28	36	32	19	0.08
Pharyngoconjunctival fever	68	92	115	67	0.27
Group A streptococcal pharyngitis	556	781	817	392	1.59
Infectious gastroenteritis	1,985	2,186	2,334	1,288	5.21
Chickenpox	204	176	219	147	0.60
Hand, foot, and mouth disease	29	33	37	21	0.09
Erythema infectiosum	31	47	44	34	0.14
Exanthem subitum	194	192	218	111	0.45
Pertussis	1			1	0.00
Herpangina	9	7	14	12	0.05
Mumps	56	38	39	30	0.12
Kawasaki disease	2	5	3	3	0.01
Cold with exanthems by Enterovirus	23	25	19	16	0.06
Influenza	233	391	427	309	0.78
Acute hemorrhagic conjunctivitis					
Epidemic keratoconjunctivitis	14	20	21	13	0.37
Bacterial meningitis		2	2	1	0.04
Aseptic meningitis	2	1	5	2	0.08
Mycoplasma pneumonia	8	14	17	12	0.50
Chlamydial pneumonia (excluding psittacosis)					
Influenza-Associated Hospitalizations	2		5	1	0.04

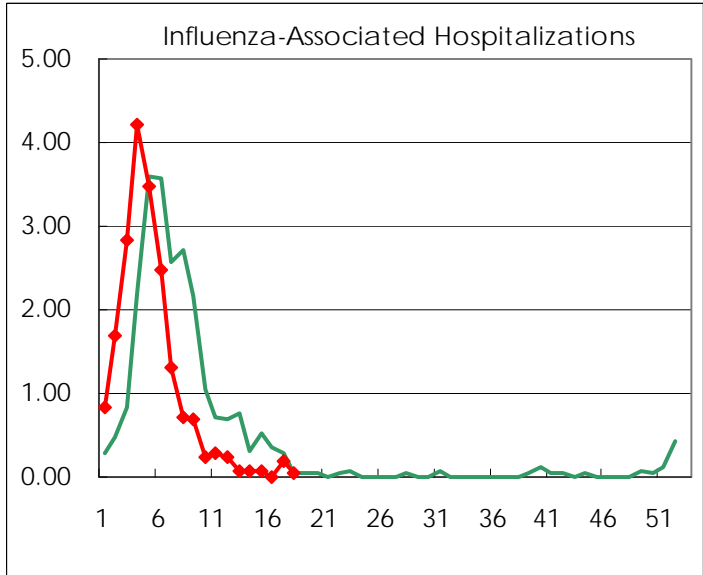
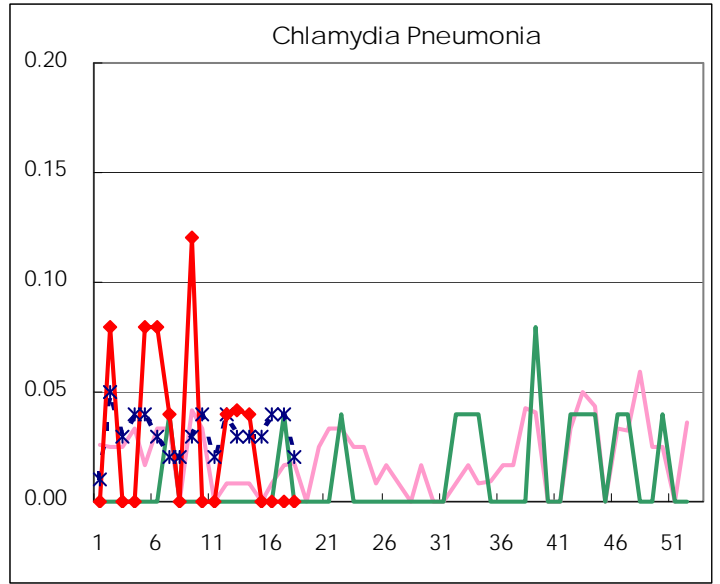
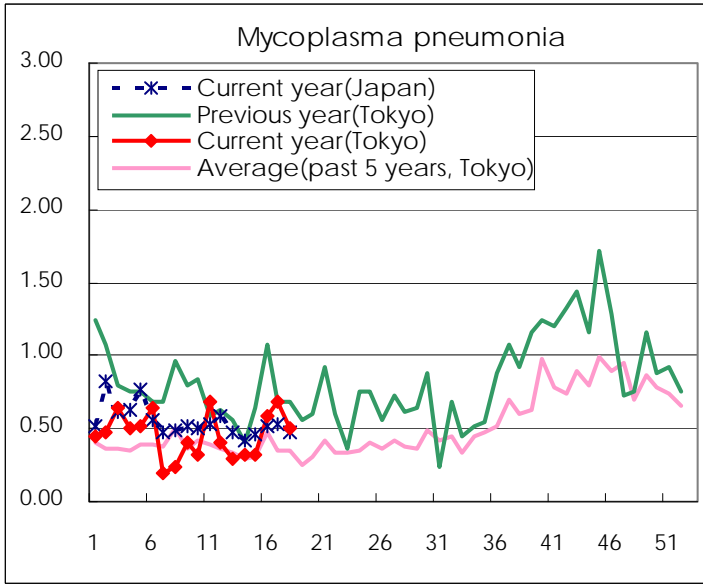
(Blank means 0.)

Disease Trend Graph (weekly reported cases per sentinel in comparison)









Number of sentinel facilities for weekly reporting		
Types of sentinels	Number of sentinels	Sentinels having reported
Pediatric	264	247
Influenza	419	394
Ophthalmic	39	35
Specially-designated	25	24

Tokyo Metropolitan Government
Infectious Disease Surveillance Center