
INFECTIOUS DISEASES WEEKLY REPORT

TOKYO IDWR

Tokyo Metropolitan Infectious Disease Surveillance Center

23 May 2013 / Number 20

Surveillance System in Tokyo, Japan

The infectious diseases which all physicians must report

All physicians must report to health centers the incidence of the diseases which are shown at page one. Health centers electronically report the individual cases to Tokyo Metropolitan Infectious Disease Surveillance Center.

The infectious diseases required to be reported by the sentinels

The numbers of patients who visit the sentinel clinics or hospitals during a week are reported to health centers in Tokyo. And they electronically report the numbers to Tokyo Metropolitan Infectious Disease Surveillance Center. We have about 500 sentinel clinics and hospitals in Tokyo.

1st Week is early January and 52nd Week is end of December.

Tokyo Metropolitan Institute of Public Health

TEL:81-3-3363-3213 FAX:81-3-5332-7365

e-mail:idsc@tokyo-eiken.go.jp

URL:idsc.tokyo-eiken.go.jp/

Number of patients with the diseases which all physicians must report

Category	Diseases	Tokyo					Japan	
		17th	18th	19th	20th	Cum 2013	20th	Cum 2013
I	Ebola hemorrhagic fever							
	Crimean-Congo hemorrhagic fever							
	Smallpox							
	South American hemorrhagic fever							
	Plague							
	Marburg disease							
	Lassa fever							
II	Acute poliomyelitis							
	Tuberculosis	75	57	51	63	1,396	314	9,204
	Diphtheria							
	Severe Acute Respiratory Syndrome(SARS)							
	Avian influenza H5N1							
※	Avian influenza H7N9							
III	Cholera						1	1
	Shigellosis	1			1	11	3	46
	Enterohemorrhagic Escherichia coli infection	4		1	1	25	33	285
	Typhoid fever			3		13		26
	Paratyphoid fever			1		9		24
IV	Hepatitis E					17	1	49
	West Nile fever							
	Hepatitis A	2		1	1	11	2	61
	Echinococcosis							7
	Yellow fever							
	Psittacosis					2		4
	Omsk hemorrhagic fever							
	Relapsing fever							
	Kyasanur forest disease							
	Q fever					1	1	2
	Rabies							
	Coccidioidomycosis					2		2
	Monkeypox							
	Severe Fever with Thrombocytopenia Syndrome						2	12
	Hemorrhagic fever with renal syndrome							
	Western equine encephalitis							
	Tick-borne encephalitis							
	Anthrax							
	Chikungunya fever					2		6
	Scrub typhus(Tsutsugamushi disease)						7	53
	Dengue fever	1	1		4	18	7	62
	Eastern equine encephalitis							
	Avian influenza (excluding H5N1 and H7N9)							
	Nipah virus infection							
	Japanese spotted fever						1	5
	Japanese encephalitis							
	Hantavirus pulmonary syndrome							
	Herpes B virus infection							
	Glanders							
	Brucellosis							1
	Venezuelan equine encephalitis							
	Hendra virus infection							
	Epidemic typhus							
Botulism								
Malaria				1	5	2	17	
Tularemia								
Lyme disease							1	
Lyssavirus infection(excluding rabies)								
Rift valley fever								
Melioidosis					1		2	
Legionellosis			1	2	22	12	248	
Leptospirosis							3	
Rocky mountain spotted fever								

Category	Diseases	Tokyo					Japan	
		17th	18th	19th	20th	Cum 2013	20th	Cum 2013
V	Amebiasis	8	4	2	6	79	5	358
	Viral hepatitis(excluding hepatitis A and E)	3			2	27	3	95
	Acute encephalitis(excluding JE and WNE)	2			1	21	3	168
	Cryptosporidiosis			1		1		1
	Creutzfeldt-Jakob disease	1				5	2	66
	Severe invasive streptococcal infections(TSLS)		2	2	2	14	2	80
	Acquired immunodeficiency syndrome (AIDS)	8	7	11	10	165	14	512
	Giardiasis	2	1			9	1	29
	Invasive <i>Haemophilus influenzae</i> disease		1	1		4	1	18
	Invasive meningococcal disease		1			3	1	6
	Invasive pneumococcal disease	4	3	4	5	22	32	240
	Meningococcal meningitis	/	/	/	/		/	2
	Congenital rubella syndrome					1		5
	Syphilis	14	5	6	13	148	21	389
	Tetanus					3	5	38
	Vancomycin-resistant <i>S. aureus</i> infection							
	Vancomycin-resistant Enterococcus infection			1		5		26
	Rubella	178	93	108	156	2,185	571	7,540
	Measles	3	1	3		41	9	133

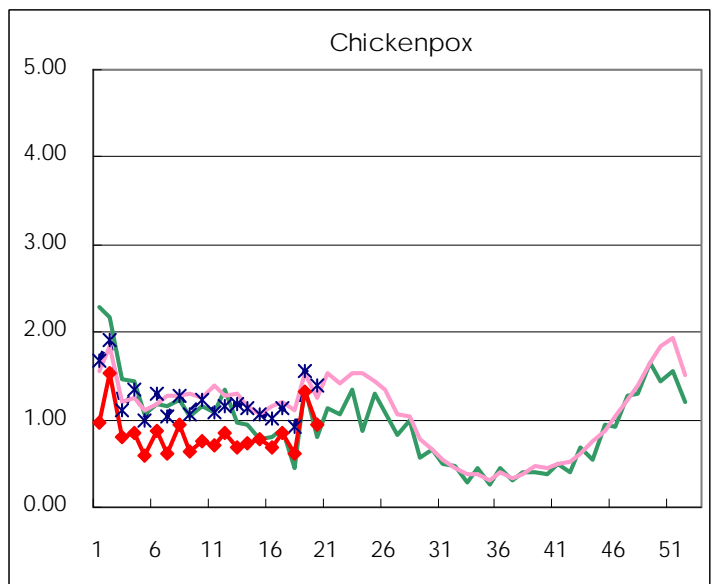
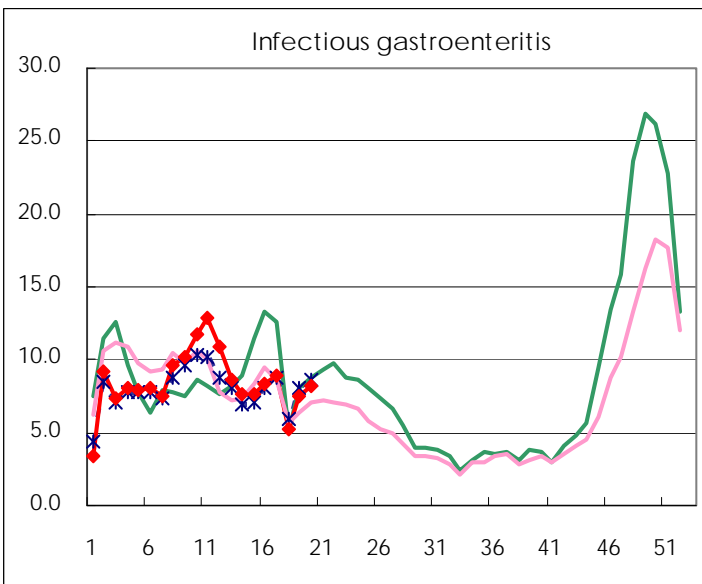
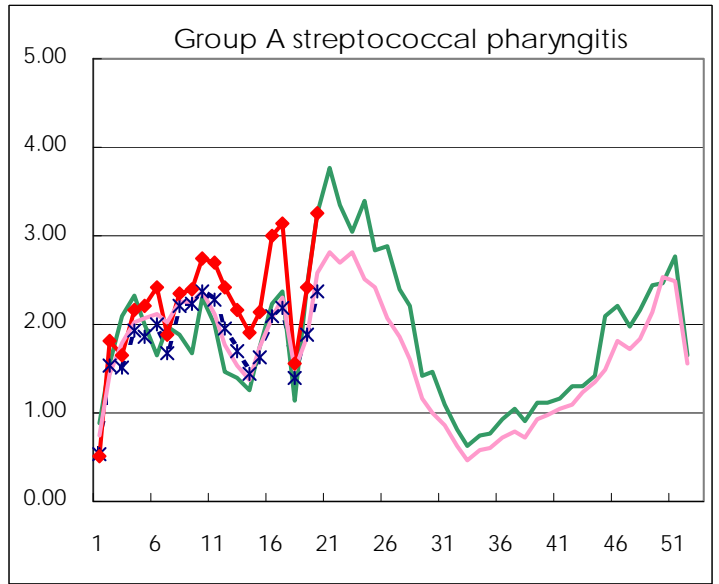
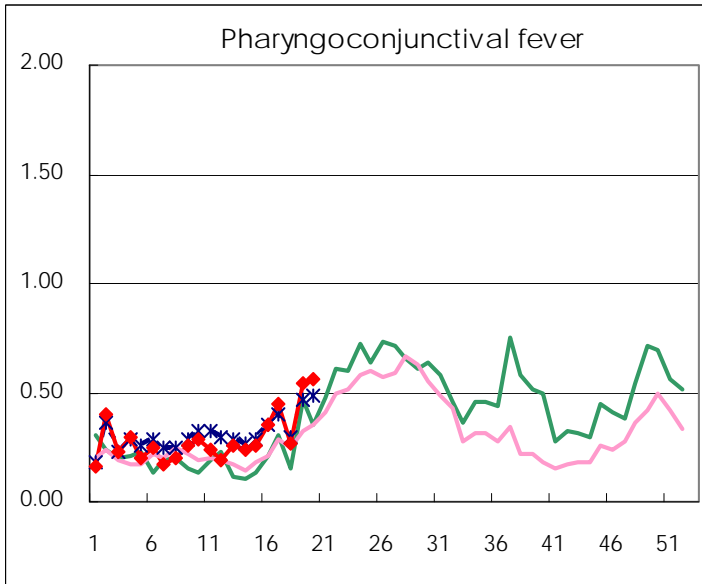
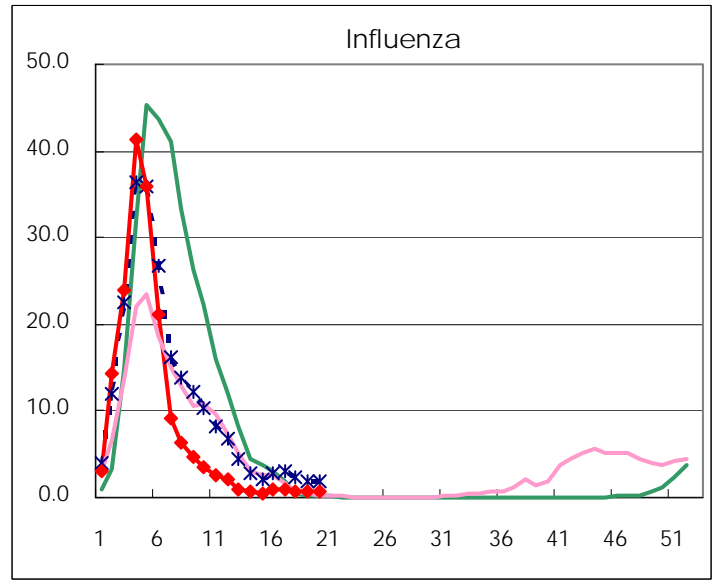
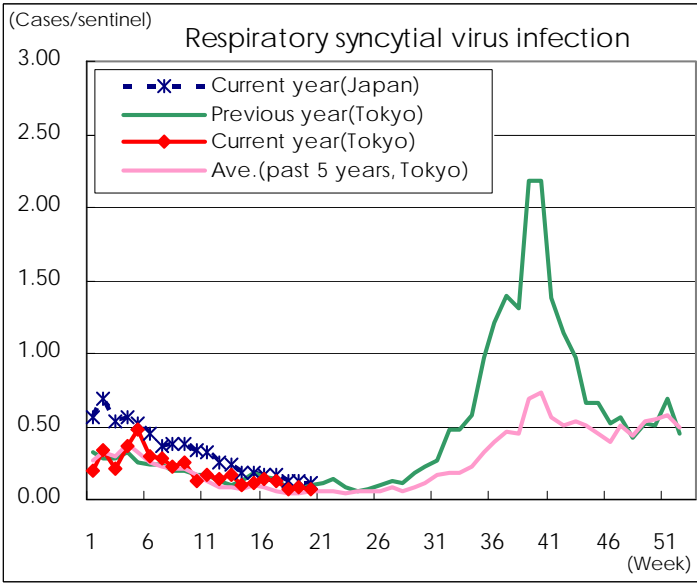
※ Designated infectious disease

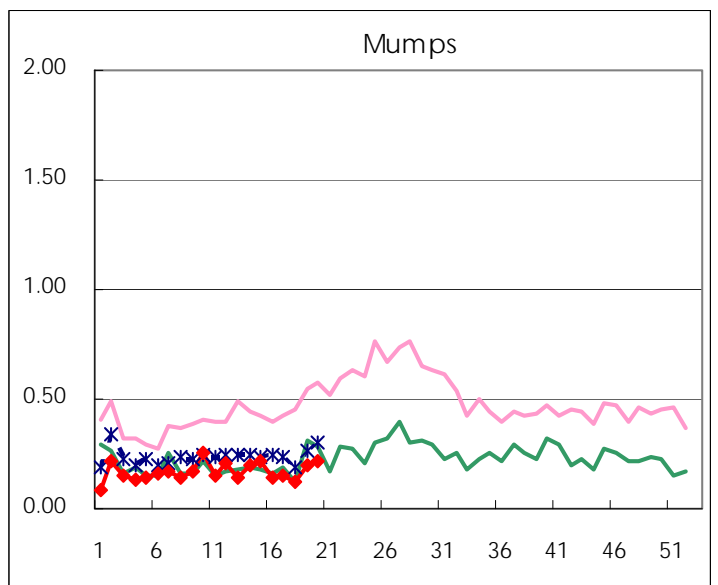
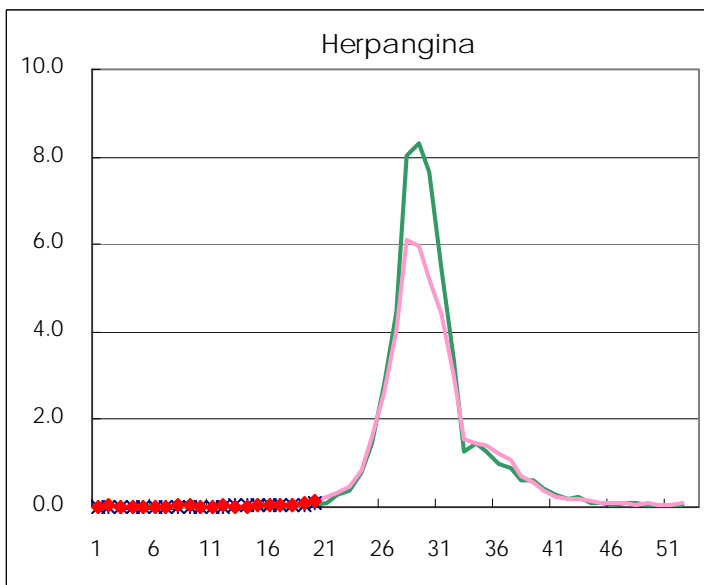
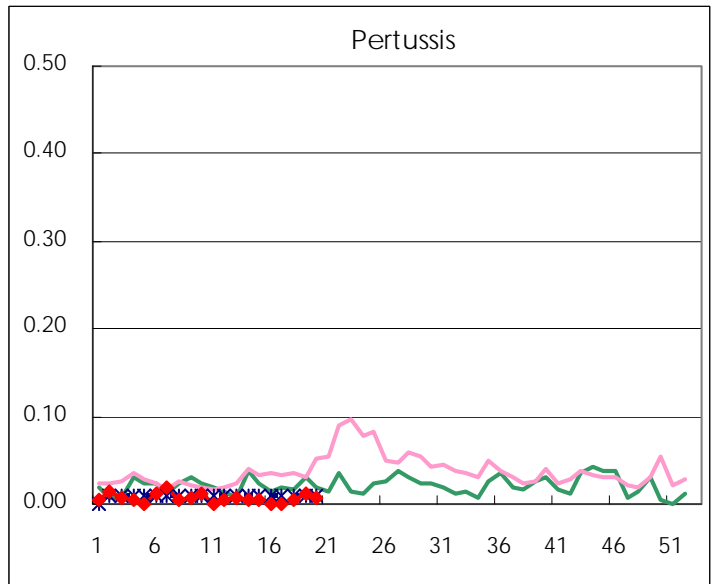
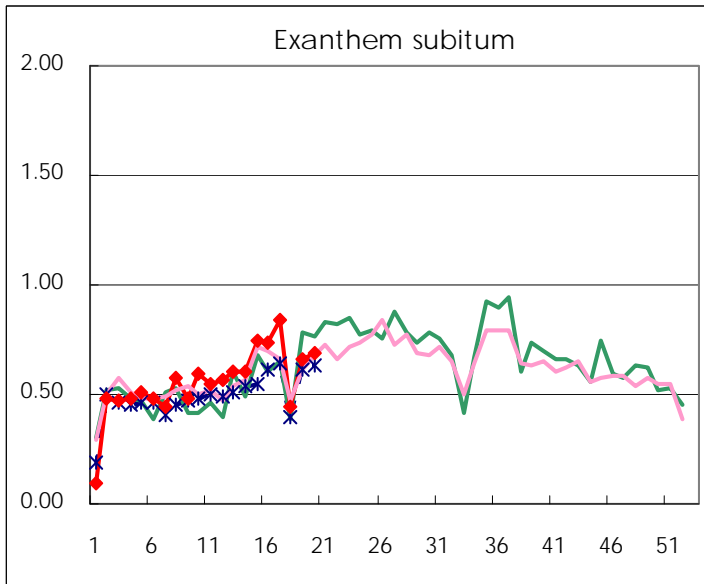
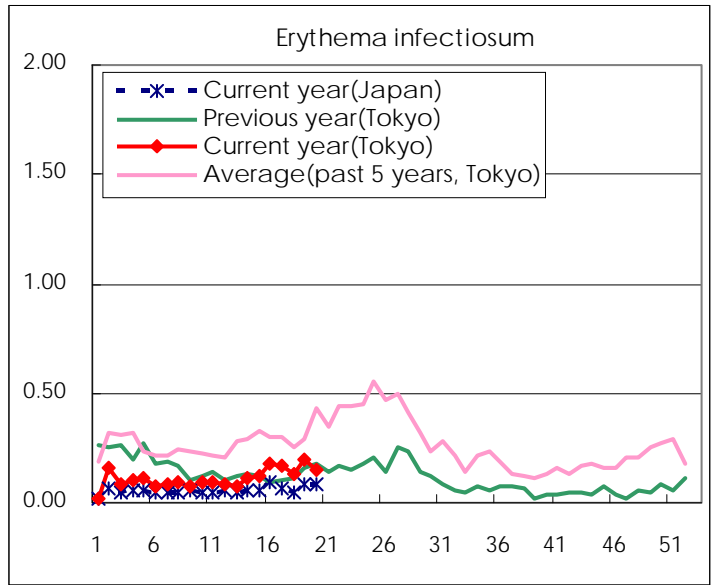
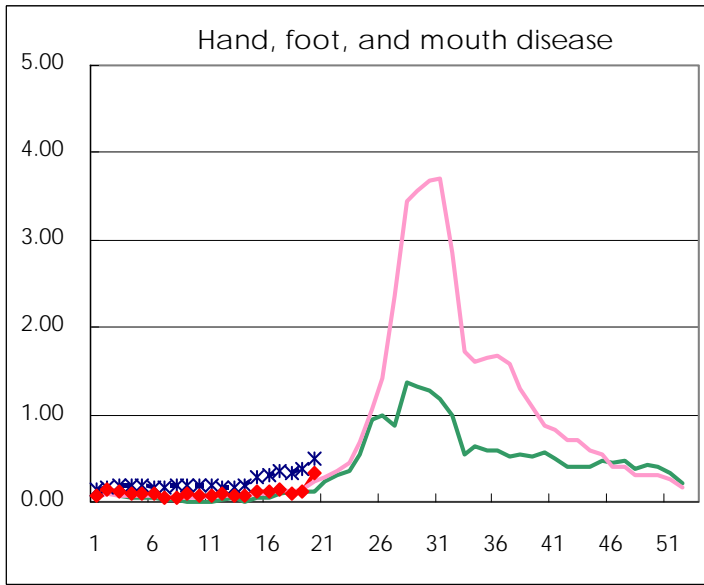
Number of patients with the diseases to be reported
by the designated clinics and hospitals

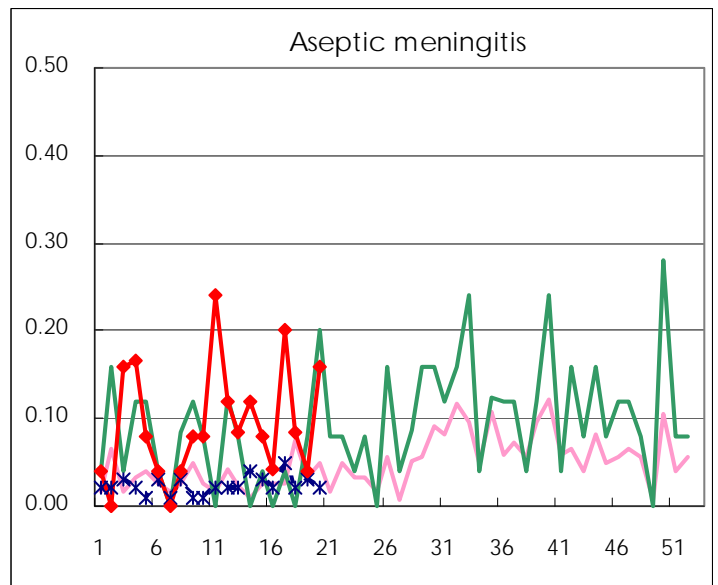
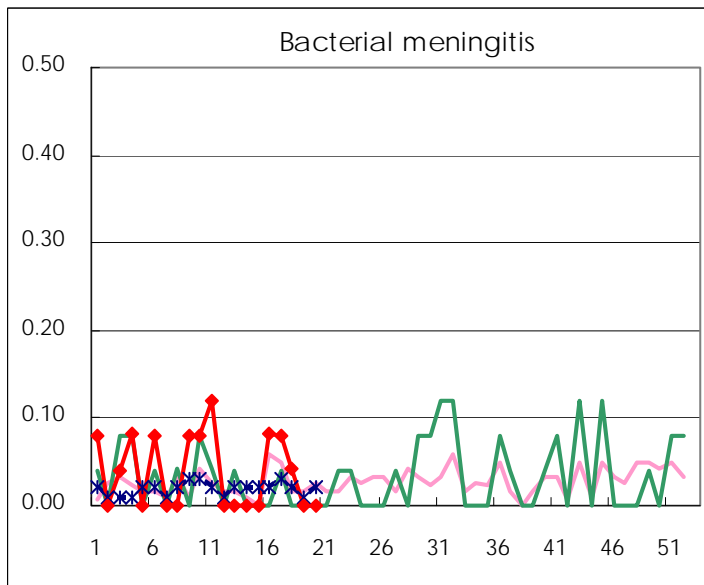
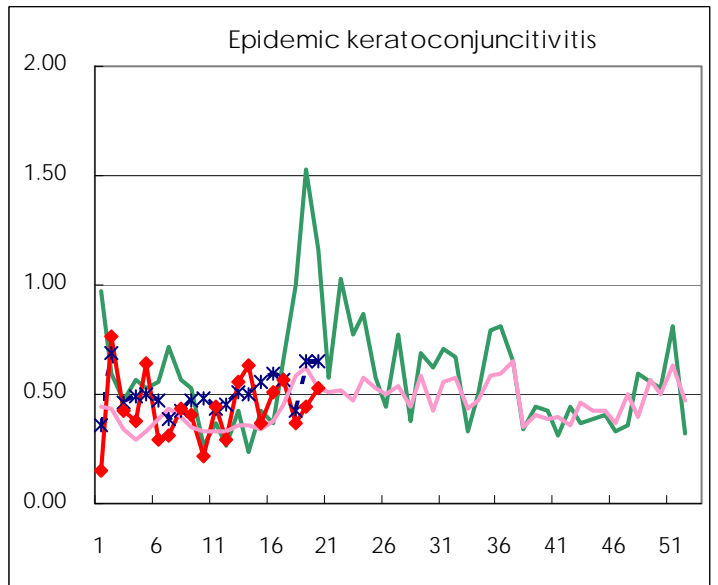
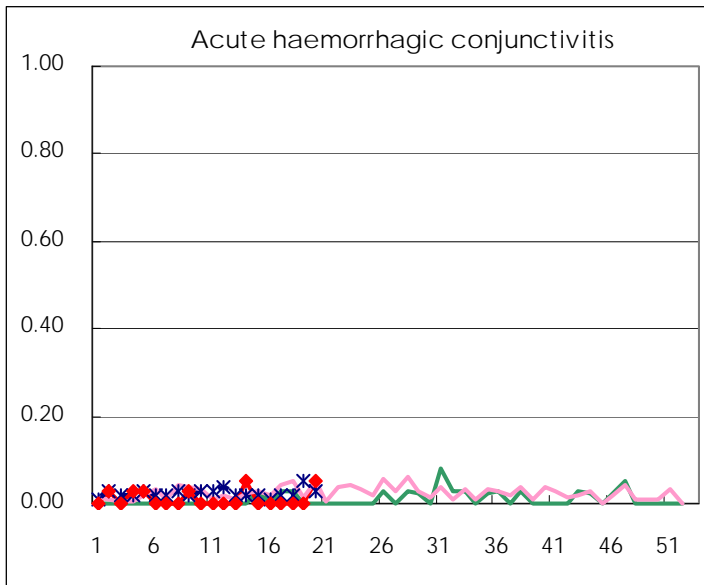
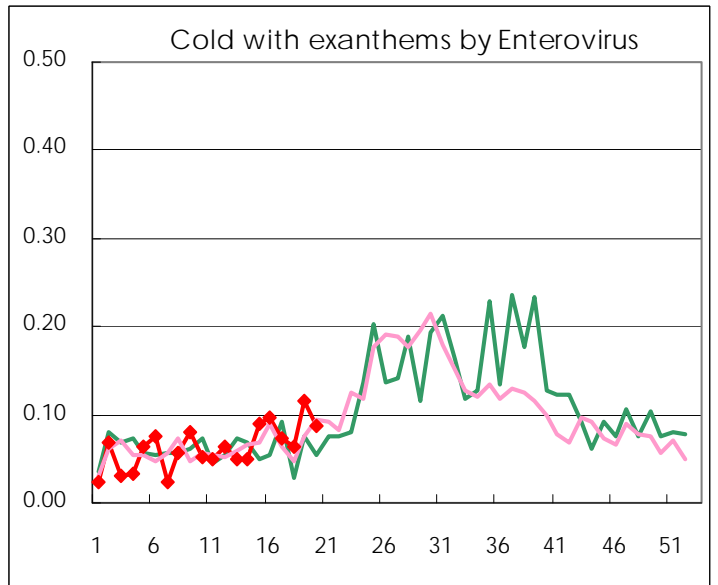
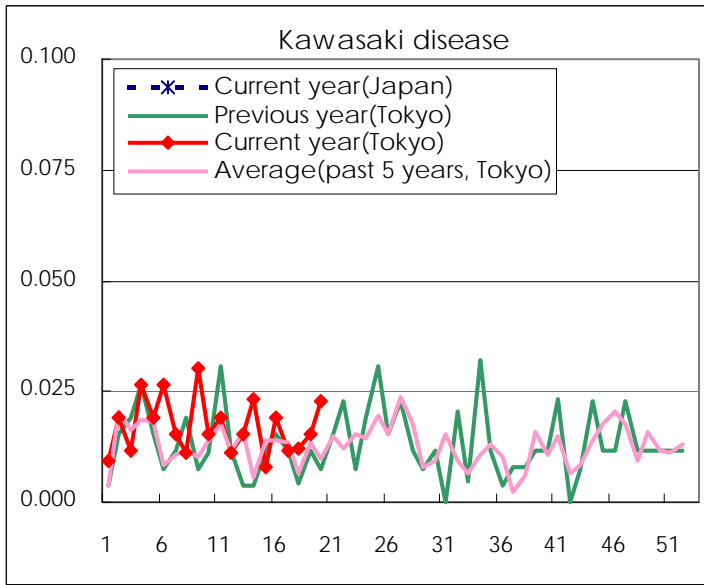
Diseases	Tokyo				
	17th	18th	19th	20th	/sentinel
Respiratory syncytial virus infection	32	19	22	17	0.07
Pharyngoconjunctival fever	116	67	141	146	0.56
Group A streptococcal pharyngitis	817	393	632	852	3.26
Infectious gastroenteritis	2,336	1,297	1,973	2,134	8.18
Chickenpox	220	152	343	247	0.95
Hand, foot, and mouth disease	37	23	33	86	0.33
Erythema infectiosum	44	34	52	40	0.15
Exanthem subitum	218	112	173	180	0.69
Pertussis		1	3	2	0.01
Herpangina	14	12	19	33	0.13
Mumps	40	30	52	57	0.22
Kawasaki disease	3	3	4	6	0.02
Cold with exanthems by Enterovirus	19	16	30	23	0.09
Influenza	428	311	264	308	0.74
Acute hemorrhagic conjunctivitis				2	0.05
Epidemic keratoconjunctivitis	21	13	17	20	0.53
Bacterial meningitis	2	1			
Aseptic meningitis	5	2	1	4	0.16
Mycoplasma pneumonia	17	12	4	6	0.24
Chlamydial pneumonia (excluding psittacosis)			2	1	0.04
Influenza-Associated Hospitalizations	5	1	1	2	0.08

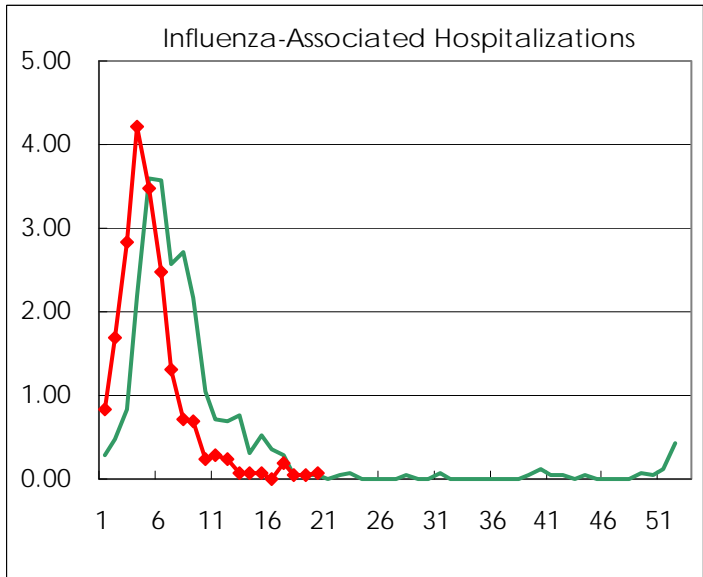
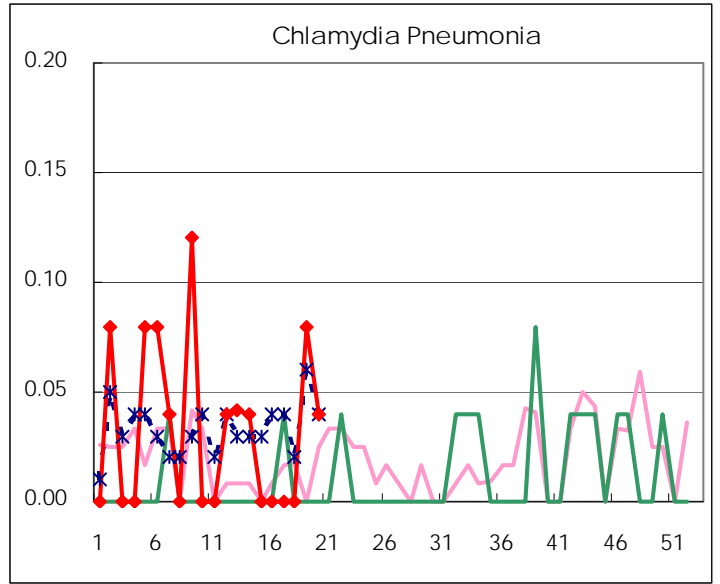
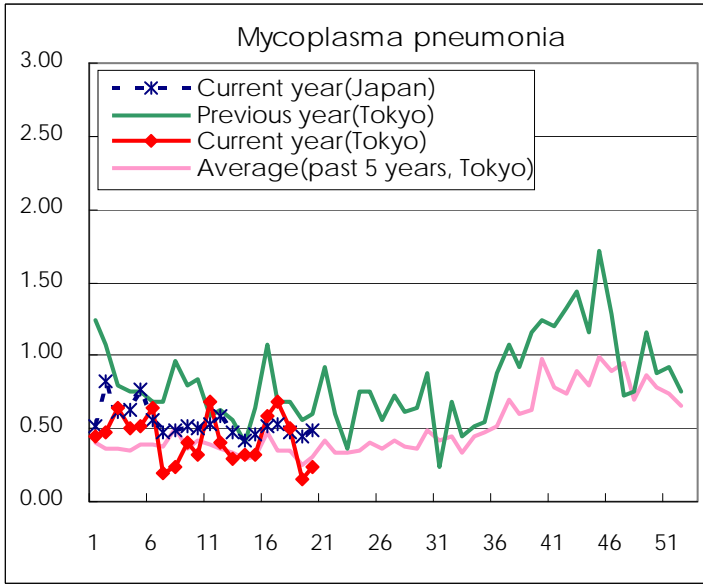
(Blank means 0.)

Disease Trend Graph (weekly reported cases per sentinel in comparison)









Number of sentinel facilities for weekly reporting		
Types of sentinels	Number of sentinels	Sentinels having reported
Pediatric	264	261
Influenza	419	416
Ophthalmic	39	38
Specially-designated	25	25

Tokyo Metropolitan Government
Infectious Disease Surveillance Center