
INFECTIOUS DISEASES WEEKLY REPORT

TOKYO IDWR

Tokyo Metropolitan Infectious Disease Surveillance Center

6 June 2013 / Number 22

Surveillance System in Tokyo, Japan

The infectious diseases which all physicians must report

All physicians must report to health centers the incidence of the diseases which are shown at page one. Health centers electronically report the individual cases to Tokyo Metropolitan Infectious Disease Surveillance Center.

The infectious diseases required to be reported by the sentinels

The numbers of patients who visit the sentinel clinics or hospitals during a week are reported to health centers in Tokyo. And they electronically report the numbers to Tokyo Metropolitan Infectious Disease Surveillance Center. We have about 500 sentinel clinics and hospitals in Tokyo.

1st Week is early January and 52nd Week is end of December.

Tokyo Metropolitan Institute of Public Health

TEL:81-3-3363-3213 FAX:81-3-5332-7365

e-mail:idsc@tokyo-eiken.go.jp

URL:idsc.tokyo-eiken.go.jp/

Number of patients with the diseases which all physicians must report

Category	Diseases	Tokyo					Japan	
		19th	20th	21st	22nd	Cum 2013	22nd	Cum 2013
I	Ebola hemorrhagic fever							
	Crimean-Congo hemorrhagic fever							
	Smallpox							
	South American hemorrhagic fever							
	Plague							
	Marburg disease							
	Lassa fever							
II	Acute poliomyelitis							
	Tuberculosis	57	73	65	68	1,545	351	10,236
	Diphtheria							
	Severe Acute Respiratory Syndrome(SARS)							
	Avian influenza H5N1							
※	Avian influenza H7N9							
III	Cholera							1
	Shigellosis		1		2	13	3	52
	Enterohemorrhagic Escherichia coli infection	1	1	3	9	37	35	367
	Typhoid fever	3				13		27
	Paratyphoid fever	1		4		13	2	30
IV	Hepatitis E				1	18	1	55
	West Nile fever							
	Hepatitis A	1	1			11	1	66
	Echinococcosis							7
	Yellow fever							
	Psittacosis					2	2	6
	Omsk hemorrhagic fever							
	Relapsing fever							
	Kyasanur forest disease							
	Q fever			1		2		2
	Rabies							
	Coccidioidomycosis			1		3		3
	Monkeypox							
	Severe Fever with Thrombocytopenia Syndrome						3	16
	Hemorrhagic fever with renal syndrome							
	Western equine encephalitis							
	Tick-borne encephalitis							
	Anthrax							
	Chikungunya fever					2		6
	Scrub typhus(Tsutsugamushi disease)						11	71
	Dengue fever		4			18		68
	Eastern equine encephalitis							
	Avian influenza (excluding H5N1 and H7N9)							
	Nipah virus infection							
	Japanese spotted fever						10	16
	Japanese encephalitis							
	Hantavirus pulmonary syndrome							
	Herpes B virus infection							
	Glanders							
	Brucellosis							1
	Venezuelan equine encephalitis							
	Hendra virus infection							
	Epidemic typhus							
Botulism								
Malaria		1			5		17	
Tularemia								
Lyme disease							1	
Lyssavirus infection(excluding rabies)								
Rift valley fever								
Melioidosis					1		2	
Legionellosis		2	1	1	24	16	282	
Leptospirosis						1	4	
Rocky mountain spotted fever								

Category	Diseases	Tokyo					Japan	
		19th	20th	21st	22nd	Cum 2013	22nd	Cum 2013
V	Amebiasis	2	6	2	3	84	17	409
	Viral hepatitis(excluding hepatitis A and E)		2	2	3	32	4	110
	Acute encephalitis(excluding JE and WNE)		1		2	23		178
	Cryptosporidiosis	1				1		1
	Creutzfeldt-Jakob disease					5	1	74
	Severe invasive streptococcal infections(TSLS)	2	2		2	16	4	94
	Acquired immunodeficiency syndrome (AIDS)	11	10	9	14	188	35	610
	Giardiasis				1	10		30
	Invasive <i>Haemophilus influenzae</i> disease	1				4	1	23
	Invasive meningococcal disease				1	4	1	10
	Invasive pneumococcal disease	5	6	6	2	32	15	312
	Meningococcal meningitis	/	/	/	/			2
	Congenital rubella syndrome					1		5
	Syphilis	6	13	13	9	170	14	447
	Tetanus					3	2	43
	Vancomycin-resistant <i>S. aureus</i> infection							
	Vancomycin-resistant Enterococcus infection	1				5		27
	Rubella	108	159	156	120	2,463	682	9,408
Measles	3			1	42	1	135	

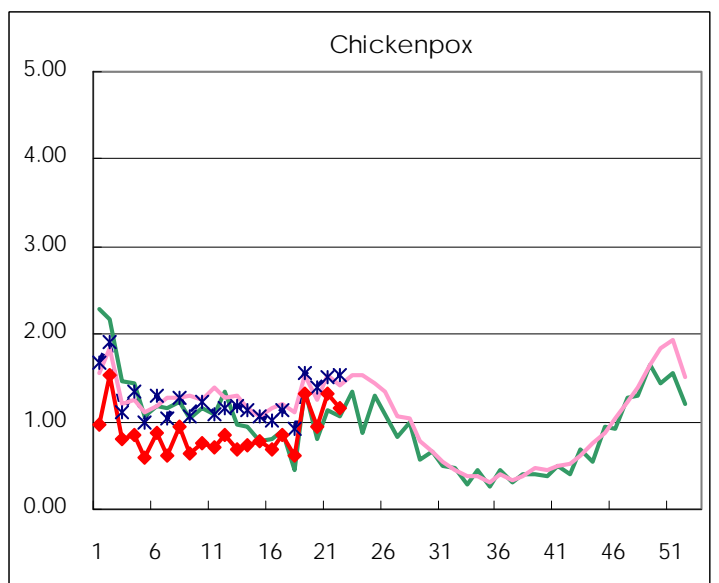
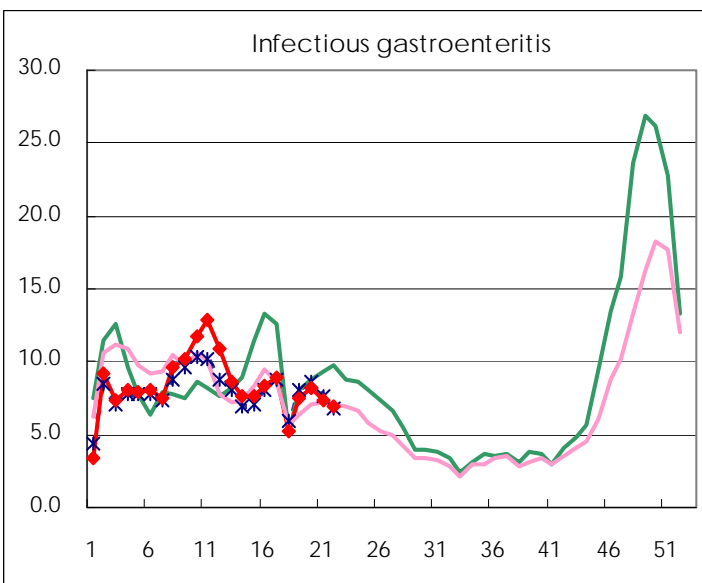
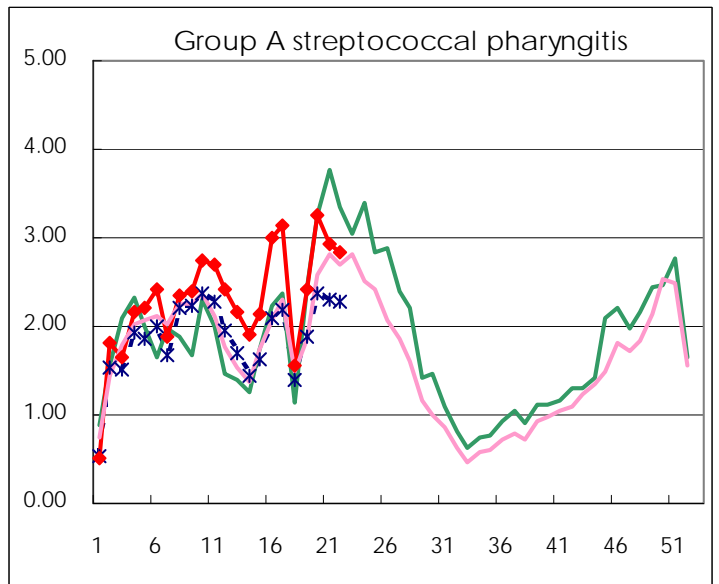
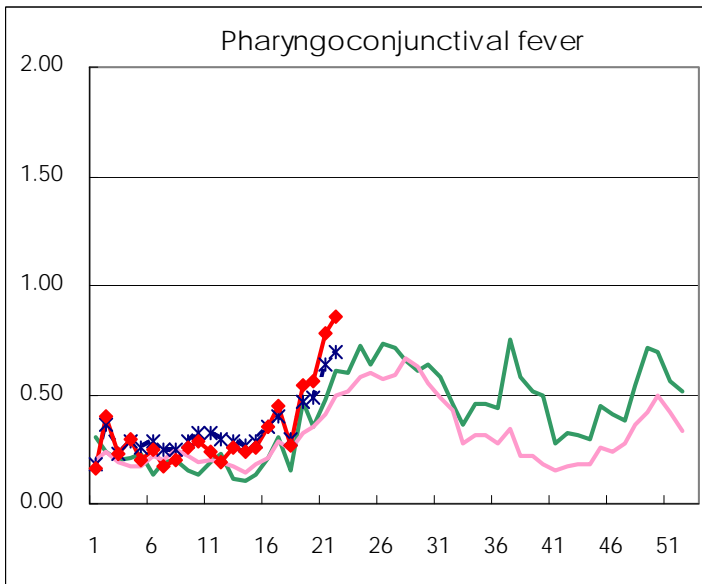
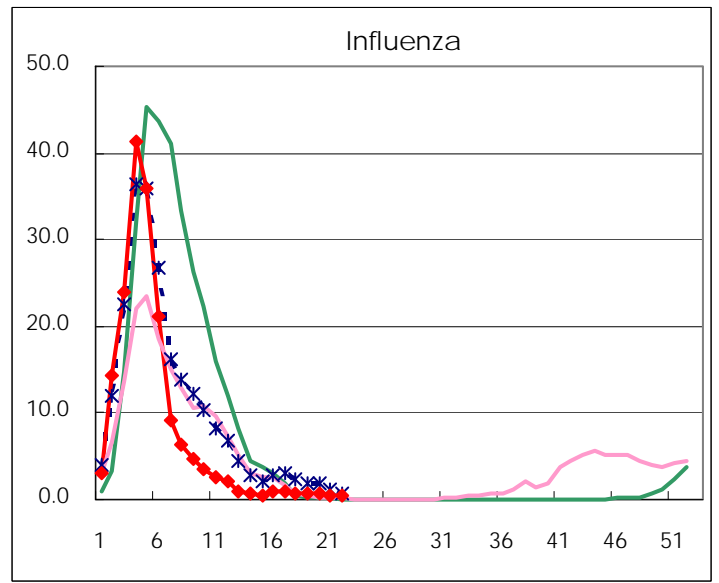
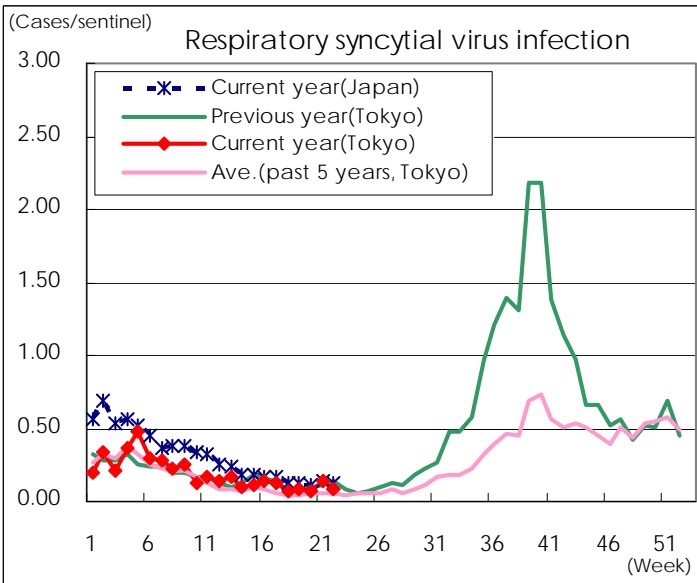
※ Designated infectious disease

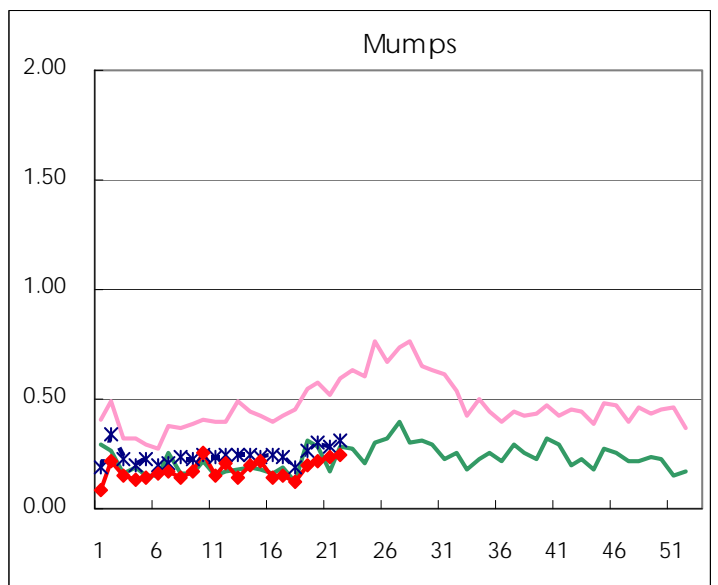
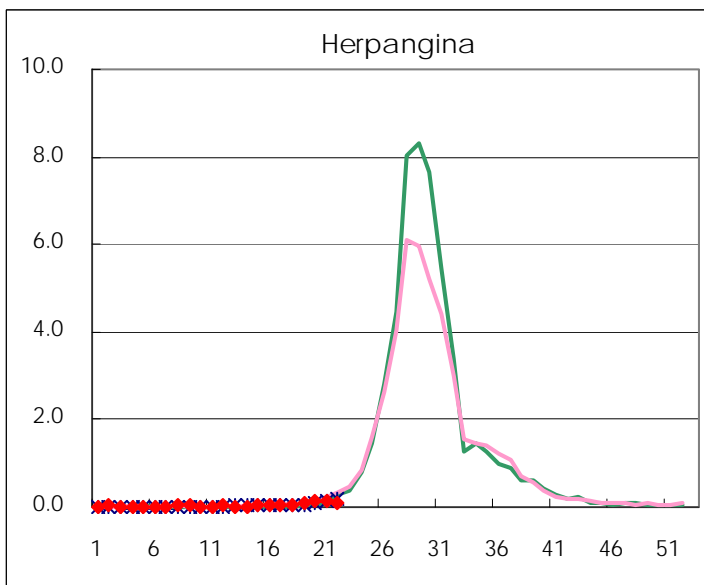
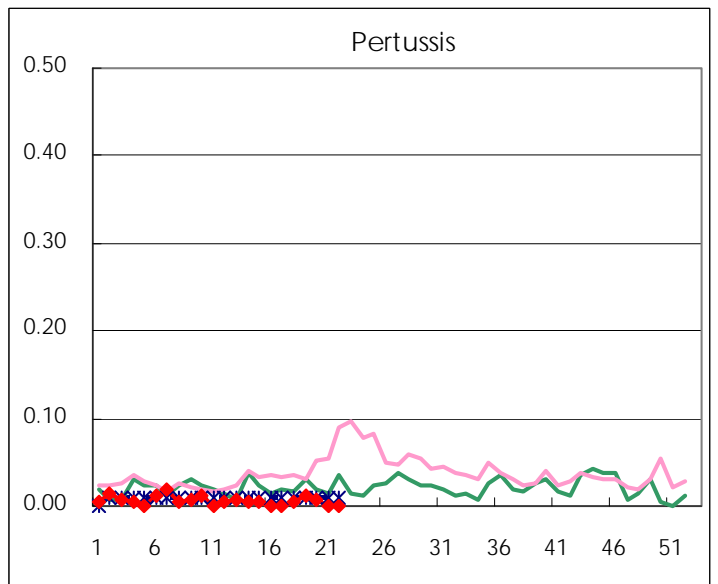
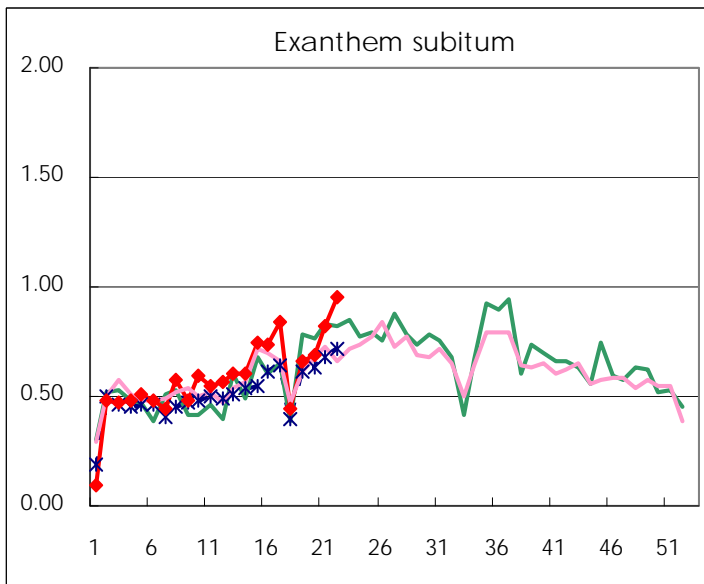
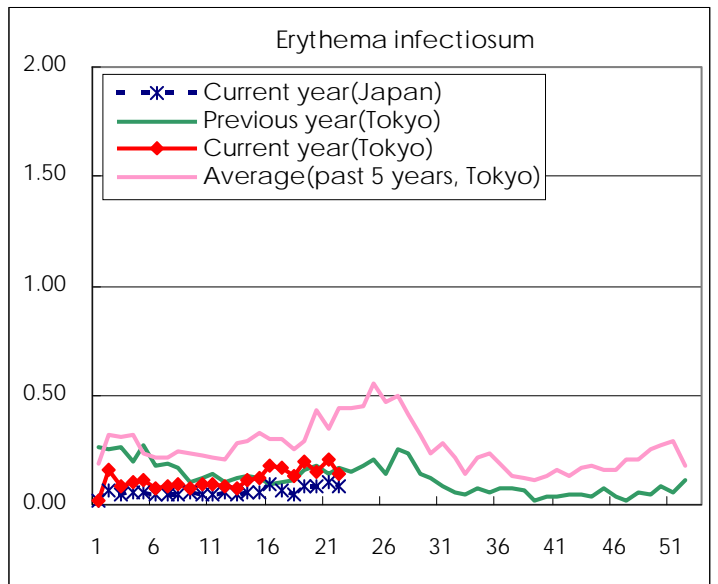
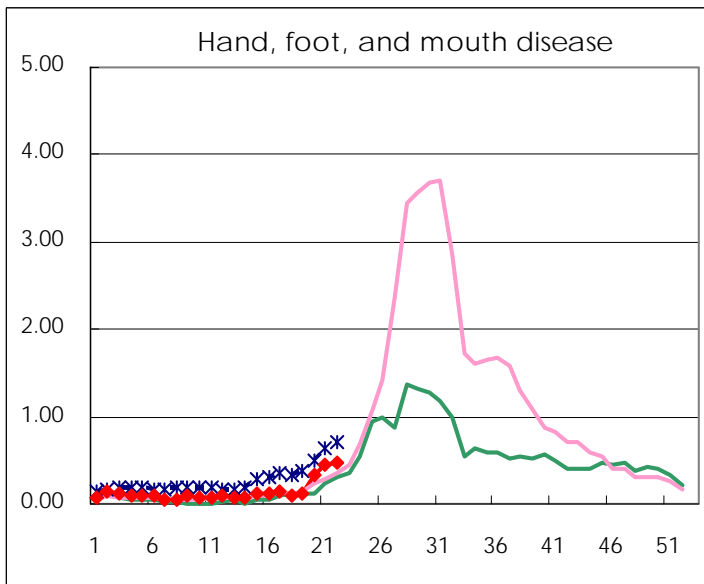
Number of patients with the diseases to be reported
by the designated clinics and hospitals

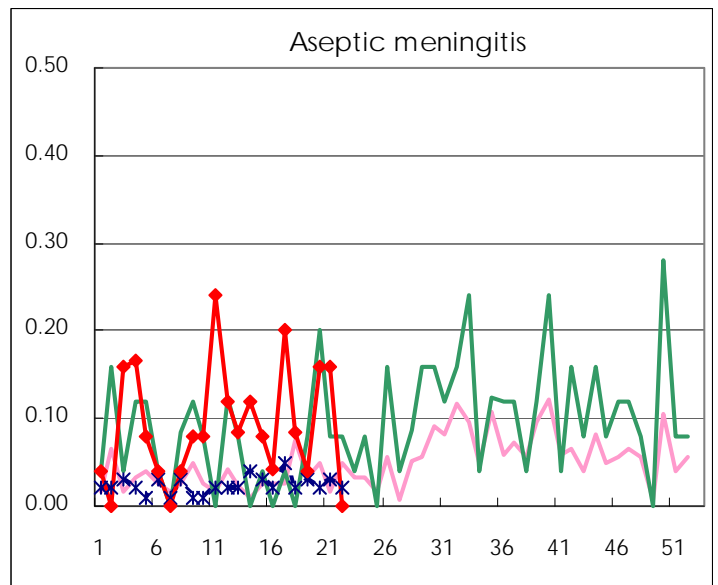
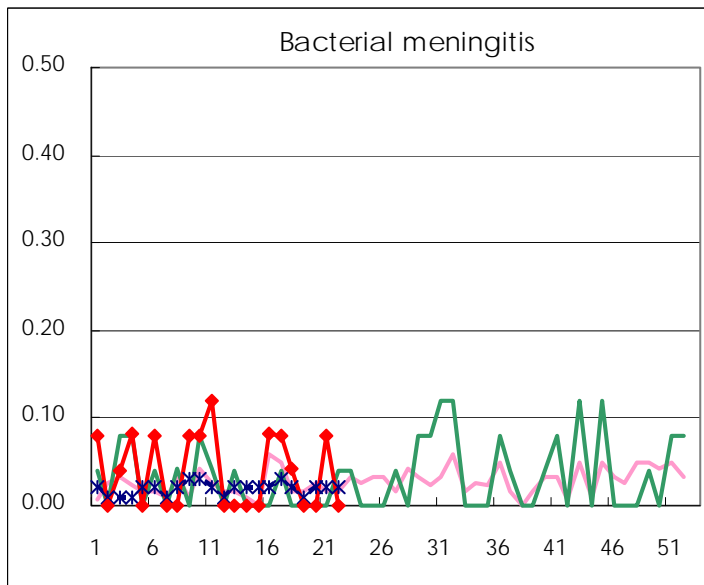
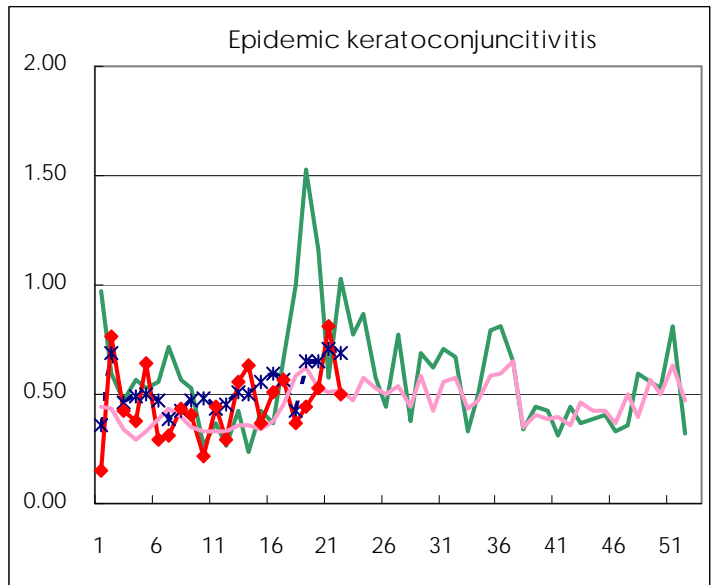
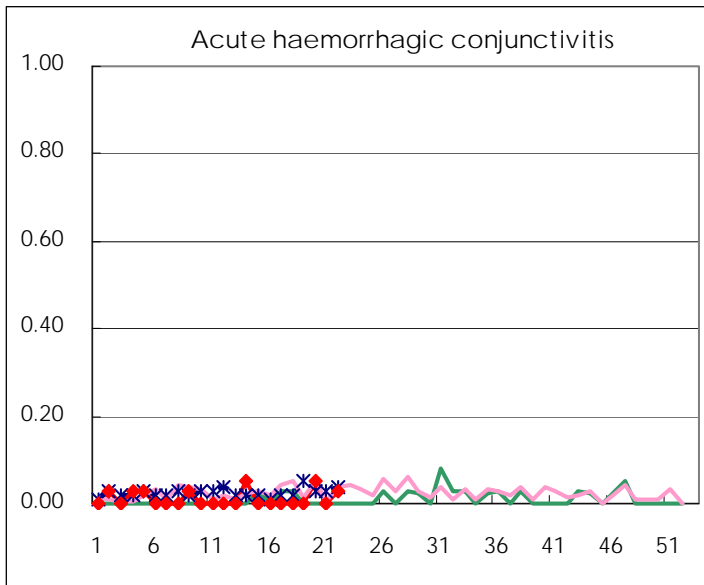
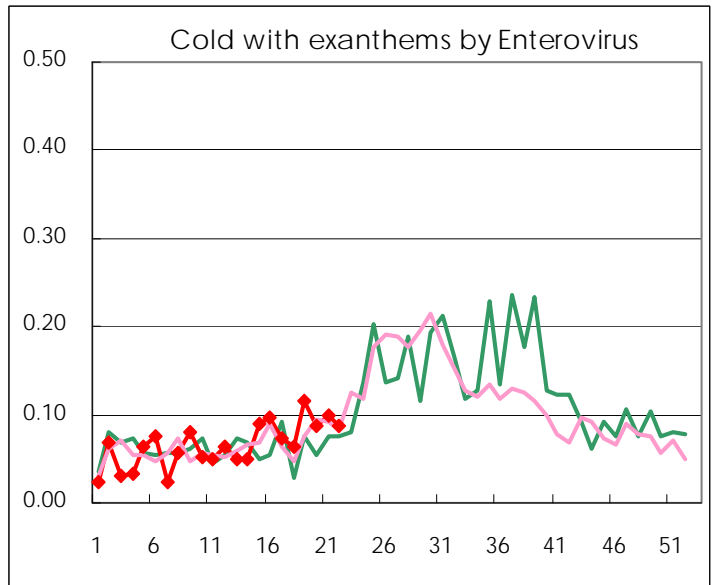
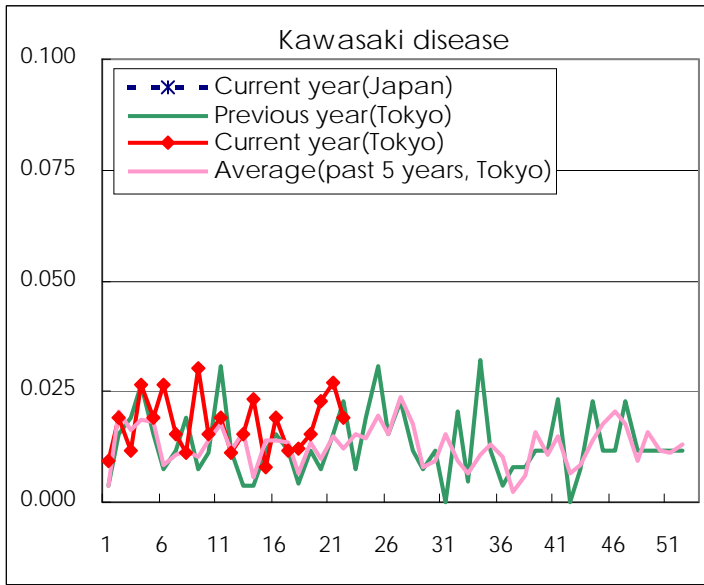
Diseases	Tokyo				
	19th	20th	21st	22nd	/sentinel
Respiratory syncytial virus infection	22	17	37	23	0.09
Pharyngoconjunctival fever	141	146	203	224	0.86
Group A streptococcal pharyngitis	632	852	767	738	2.83
Infectious gastroenteritis	1,973	2,134	1,906	1,810	6.93
Chickenpox	343	247	342	304	1.16
Hand, foot, and mouth disease	33	86	118	123	0.47
Erythema infectiosum	52	40	55	36	0.14
Exanthem subitum	173	180	214	248	0.95
Pertussis	3	2			
Herpangina	19	33	35	30	0.11
Mumps	52	57	61	64	0.25
Kawasaki disease	4	6	7	5	0.02
Cold with exanthems by Enterovirus	30	23	26	23	0.09
Influenza	264	308	201	148	0.36
Acute hemorrhagic conjunctivitis		2		1	0.03
Epidemic keratoconjunctivitis	17	20	31	19	0.50
Bacterial meningitis			2		
Aseptic meningitis	1	4	4		
Mycoplasma pneumonia	4	6	10	7	0.28
Chlamydial pneumonia (excluding psittacosis)	2	1	2		
Influenza-Associated Hospitalizations	1	2	1	1	0.04

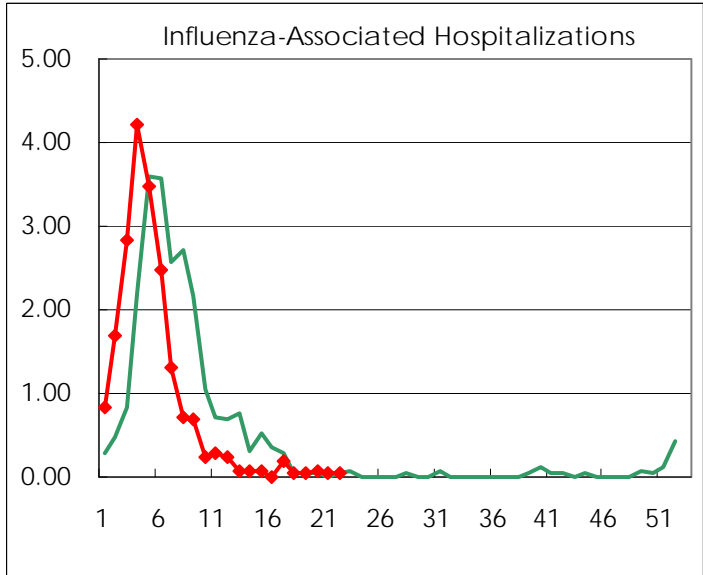
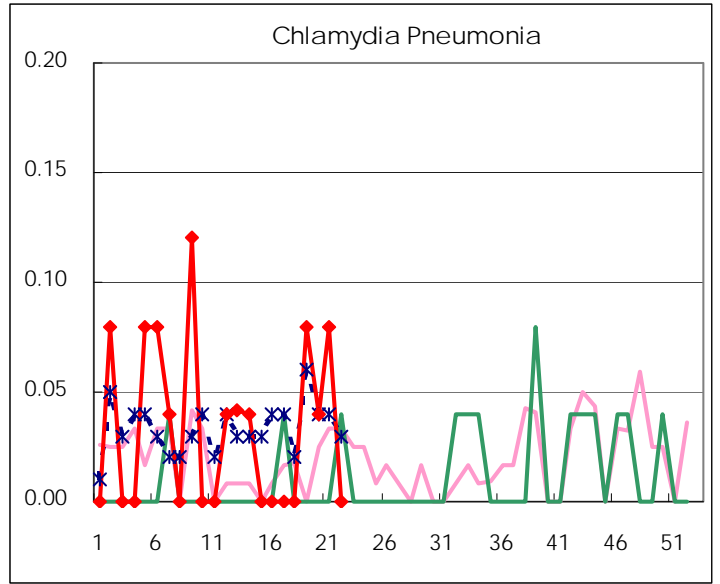
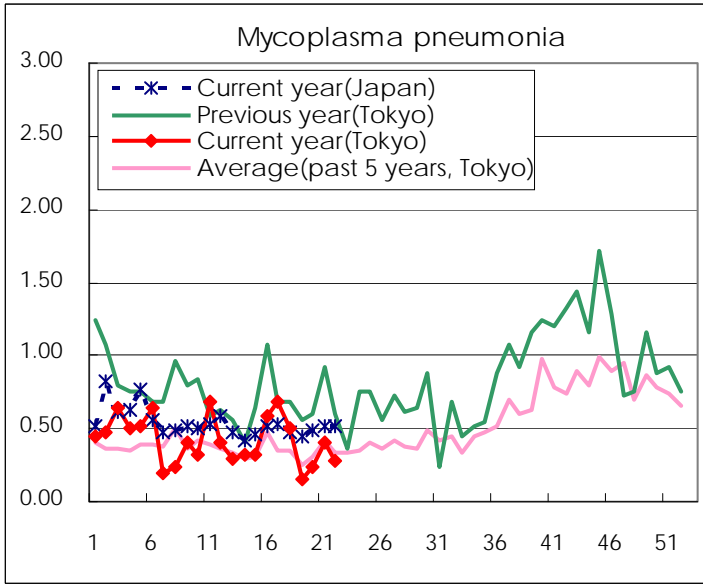
(Blank means 0.)

Disease Trend Graph (weekly reported cases per sentinel in comparison)









Number of sentinel facilities for weekly reporting		
Types of sentinels	Number of sentinels	Sentinels having reported
Pediatric	264	261
Influenza	419	413
Ophthalmic	39	38
Specially-designated	25	25

Tokyo Metropolitan Government
Infectious Disease Surveillance Center