

---

INFECTIOUS DISEASES WEEKLY REPORT

# TOKYO IDWR

Tokyo Metropolitan Infectious Disease Surveillance Center

---

**13 June 2013 / Number 23**

## Surveillance System in Tokyo, Japan

The infectious diseases which all physicians must report

All physicians must report to health centers the incidence of the diseases which are shown at page one. Health centers electronically report the individual cases to Tokyo Metropolitan Infectious Disease Surveillance Center.

The infectious diseases required to be reported by the sentinels

The numbers of patients who visit the sentinel clinics or hospitals during a week are reported to health centers in Tokyo. And they electronically report the numbers to Tokyo Metropolitan Infectious Disease Surveillance Center. We have about 500 sentinel clinics and hospitals in Tokyo.

1st Week is early January and 52nd Week is end of December.

Tokyo Metropolitan Institute of Public Health

TEL:81-3-3363-3213 FAX:81-3-5332-7365

e-mail:[idsc@tokyo-eiken.go.jp](mailto:idsc@tokyo-eiken.go.jp)

URL:[idsc.tokyo-eiken.go.jp/](http://idsc.tokyo-eiken.go.jp/)

---

## Number of patients with the diseases which all physicians must report

Category	Diseases	Tokyo					Japan	
		20th	21st	22nd	23rd	Cum 2013	23rd	Cum 2013
I	Ebola hemorrhagic fever							
	Crimean-Congo hemorrhagic fever							
	Smallpox							
	South American hemorrhagic fever							
	Plague							
	Marburg disease							
	Lassa fever							
II	Acute poliomyelitis							
	Tuberculosis	74	65	74	95	1,647	394	10,740
	Diphtheria							
	Severe Acute Respiratory Syndrome(SARS)							
	Avian influenza H5N1							
※	Avian influenza H7N9							
III	Cholera							1
	Shigellosis	1		2	1	14	5	57
	Enterohemorrhagic Escherichia coli infection	1	3	9	5	42	58	428
	Typhoid fever					13		27
	Paratyphoid fever		4		1	14	1	31
IV	Hepatitis E			1		18	2	57
	West Nile fever							
	Hepatitis A	1				11	3	70
	Echinococcosis							7
	Yellow fever							
	Psittacosis					2		6
	Omsk hemorrhagic fever							
	Relapsing fever							
	Kyasanur forest disease							
	Q fever		1			2		2
	Rabies							
	Coccidioidomycosis		1			3		3
	Monkeypox							
	Severe Fever with Thrombocytopenia Syndrome						1	17
	Hemorrhagic fever with renal syndrome							
	Western equine encephalitis							
	Tick-borne encephalitis							
	Anthrax							
	Chikungunya fever					2		6
	Scrub typhus(Tsutsugamushi disease)						6	78
	Dengue fever	4				18	3	71
	Eastern equine encephalitis							
	Avian influenza (excluding H5N1 and H7N9)							
	Nipah virus infection							
	Japanese spotted fever						5	22
	Japanese encephalitis							
	Hantavirus pulmonary syndrome							
	Herpes B virus infection							
	Glanders							
	Brucellosis							1
	Venezuelan equine encephalitis							
	Hendra virus infection							
	Epidemic typhus							
Botulism								
Malaria	1				5		17	
Tularemia								
Lyme disease							1	
Lyssavirus infection(excluding rabies)								
Rift valley fever								
Melioidosis					1		2	
Legionellosis	2	1	1	1	25	7	292	
Leptospirosis							4	
Rocky mountain spotted fever								

Category	Diseases	Tokyo					Japan	
		20th	21st	22nd	23rd	Cum 2013	23rd	Cum 2013
V	Amebiasis	6	2	3	6	90	21	438
	Viral hepatitis(excluding hepatitis A and E)	2	3	3		33	1	112
	Acute encephalitis(excluding JE and WNE)	1		2	1	24	3	186
	Cryptosporidiosis					1		1
	Creutzfeldt-Jakob disease				1	6	3	77
	Severe invasive streptococcal infections(TSLS)	2		2		16	1	97
	Acquired immunodeficiency syndrome (AIDS)	10	9	14	19	207	23	649
	Giardiasis			1	1	11	1	31
	Invasive <i>Haemophilus influenzae</i> disease				1	5	5	31
	Invasive meningococcal disease			1		4		9
	Invasive pneumococcal disease	6	6	2	5	37	20	348
	Meningococcal meningitis							2
	Congenital rubella syndrome				1	2	1	6
	Syphilis	13	13	9	3	173	16	467
	Tetanus					3	1	46
	Vancomycin-resistant <i>S. aureus</i> infection							
	Vancomycin-resistant <i>Enterococcus</i> infection					5	1	29
	Rubella	159	156	123	111	2,577	517	10,102
	Measles			1	1	44	4	142

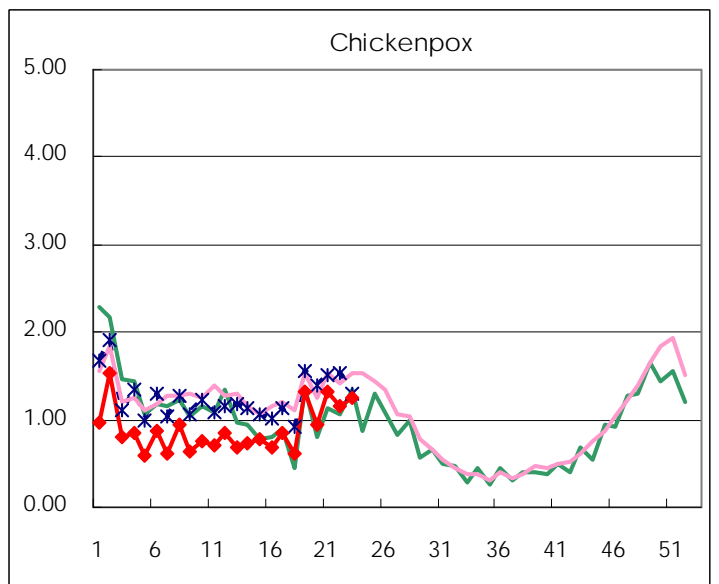
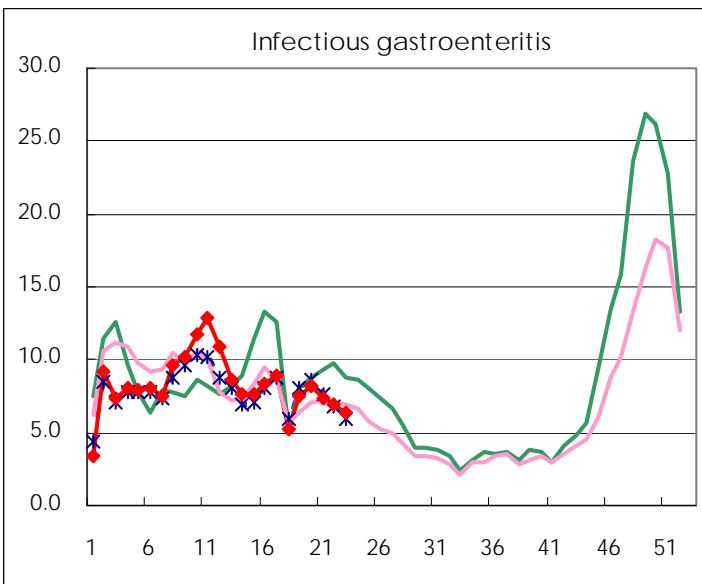
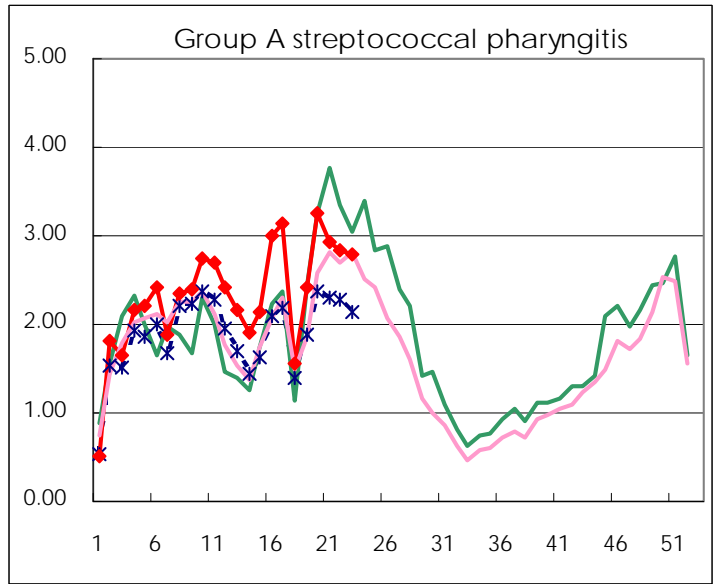
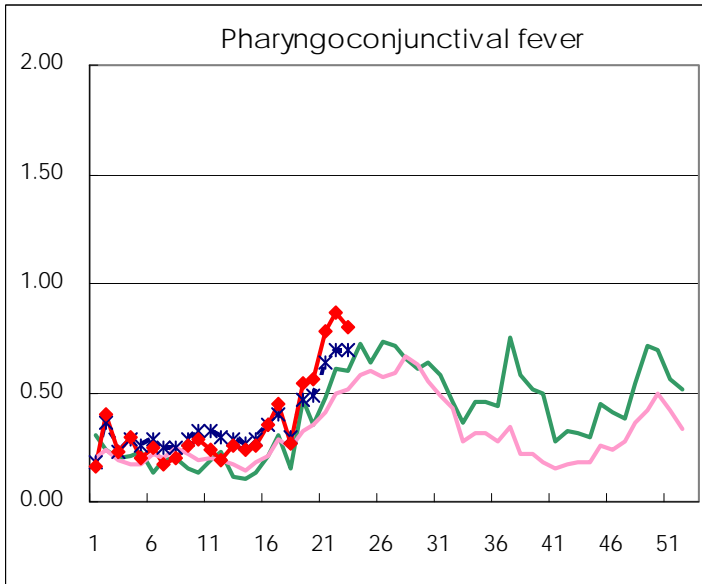
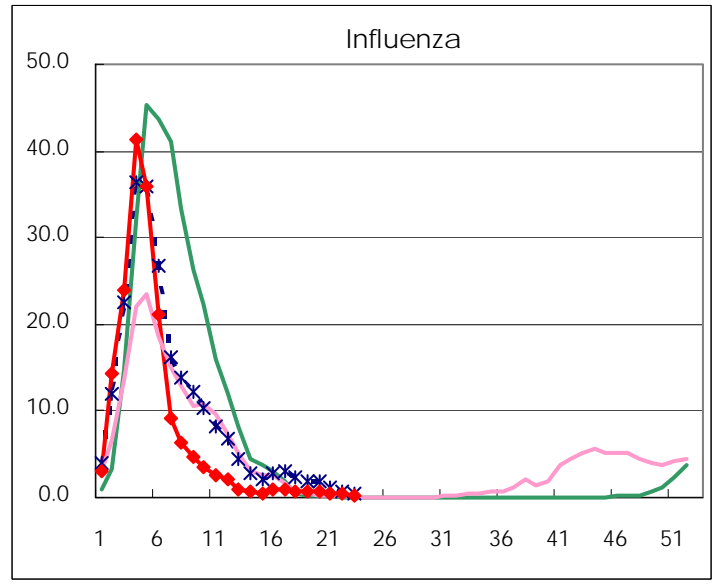
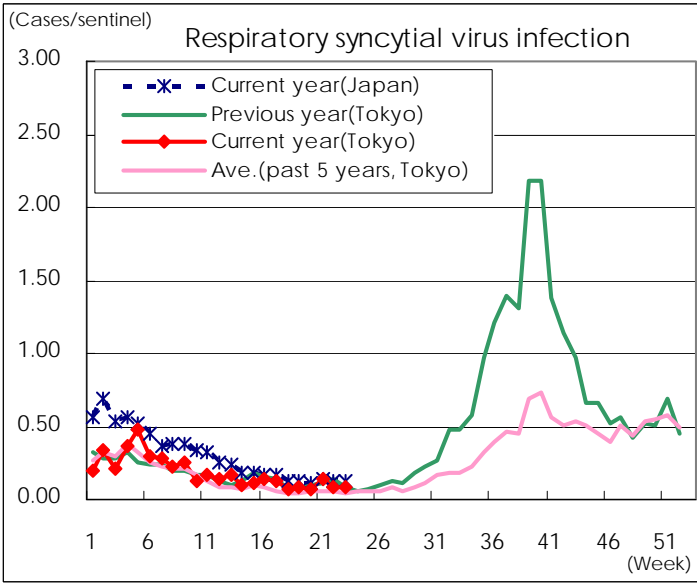
※ Designated infectious disease

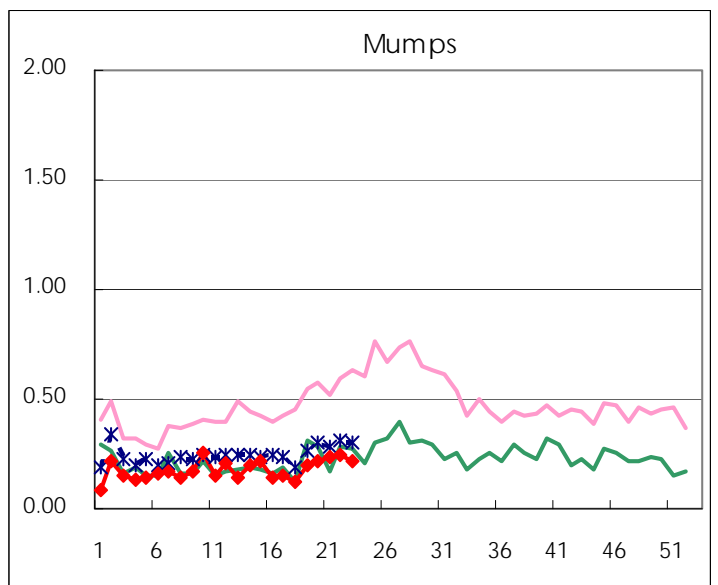
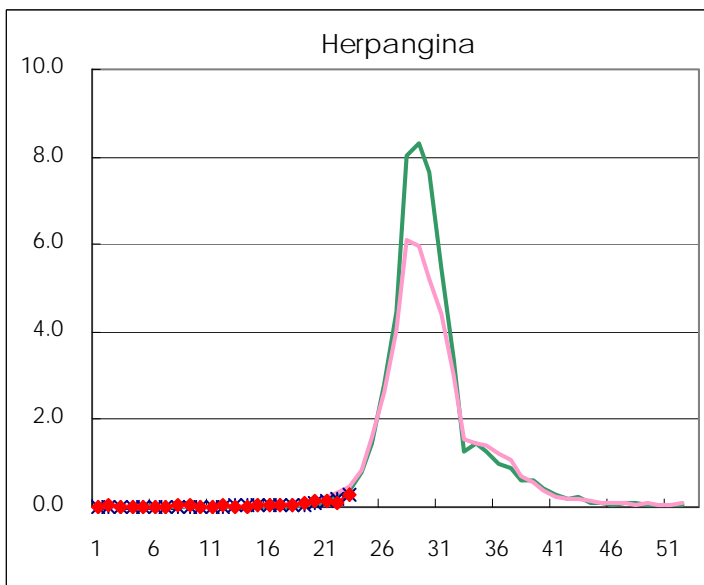
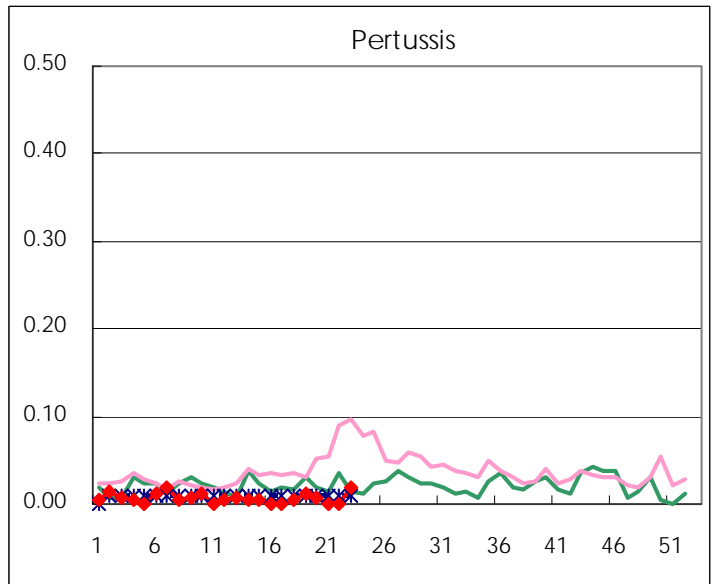
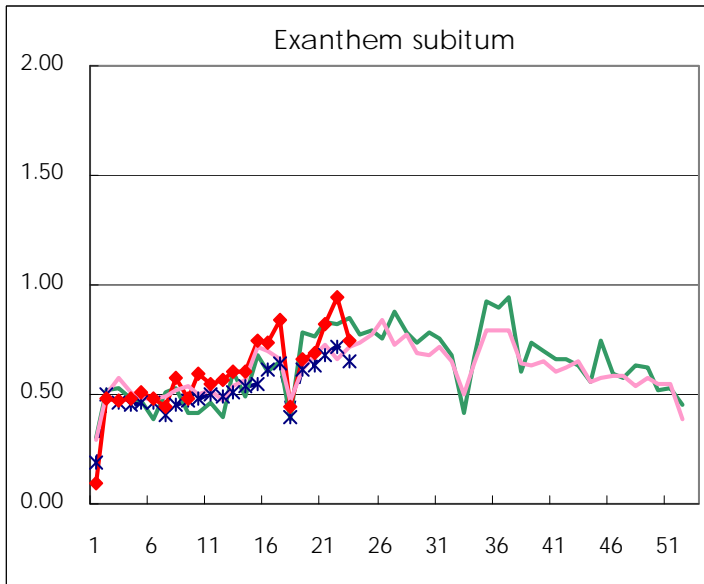
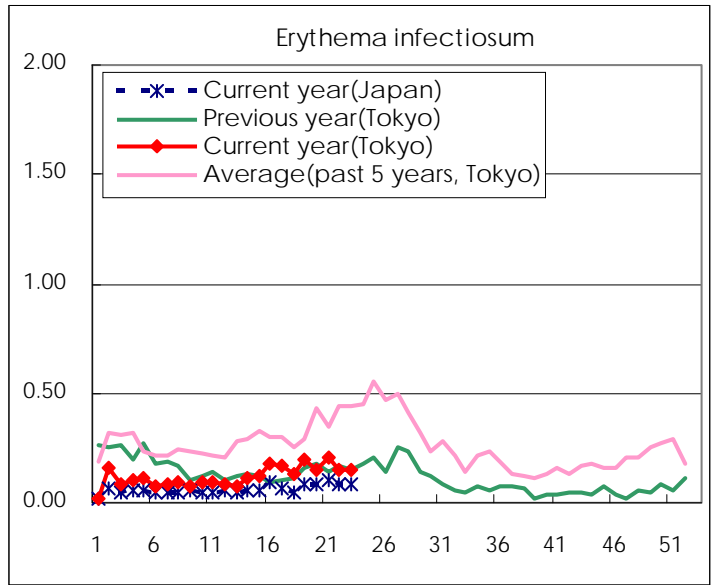
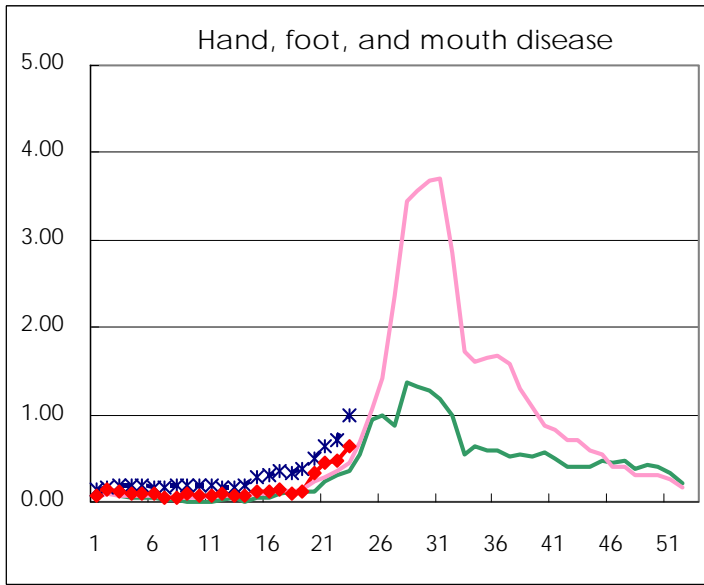
Number of patients with the diseases to be reported  
by the designated clinics and hospitals

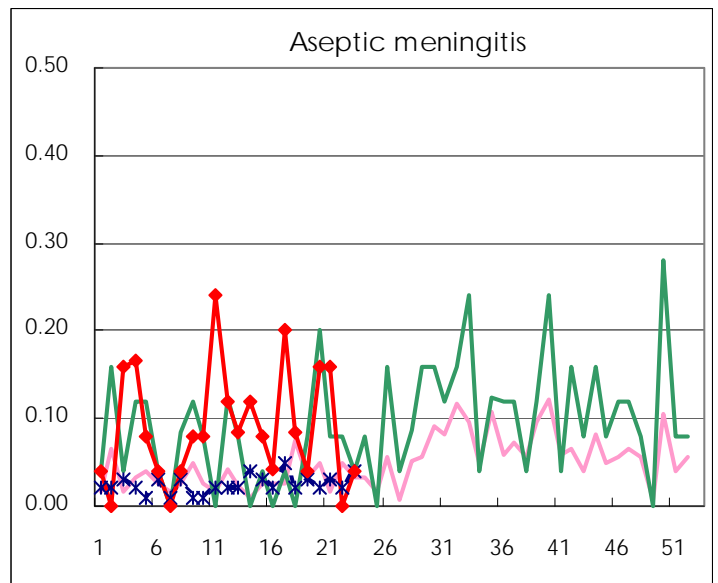
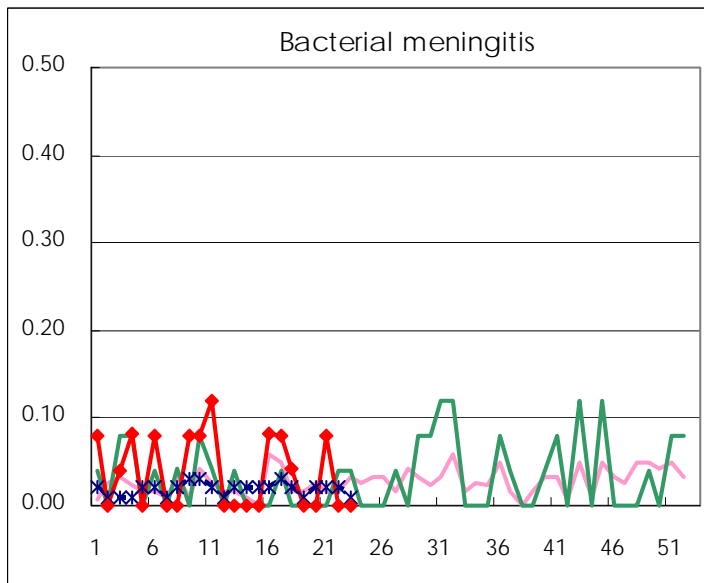
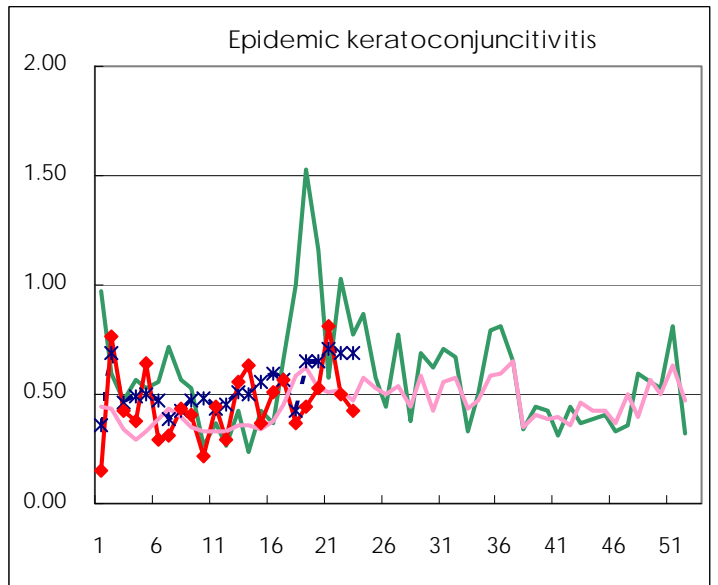
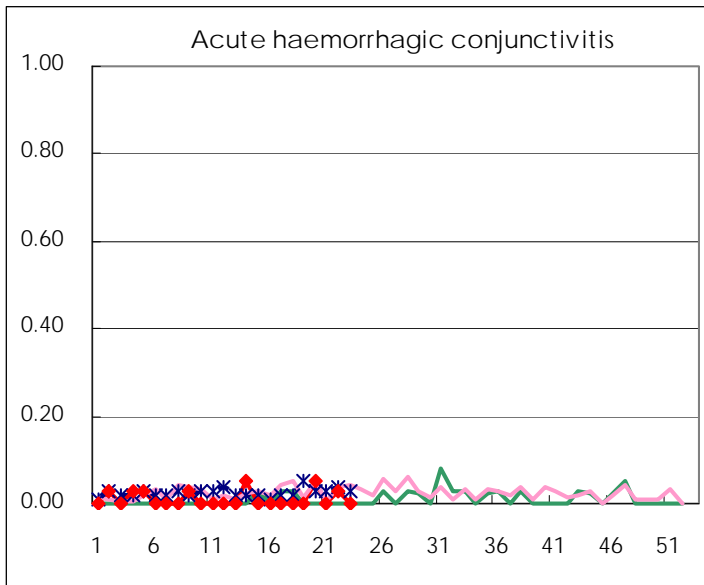
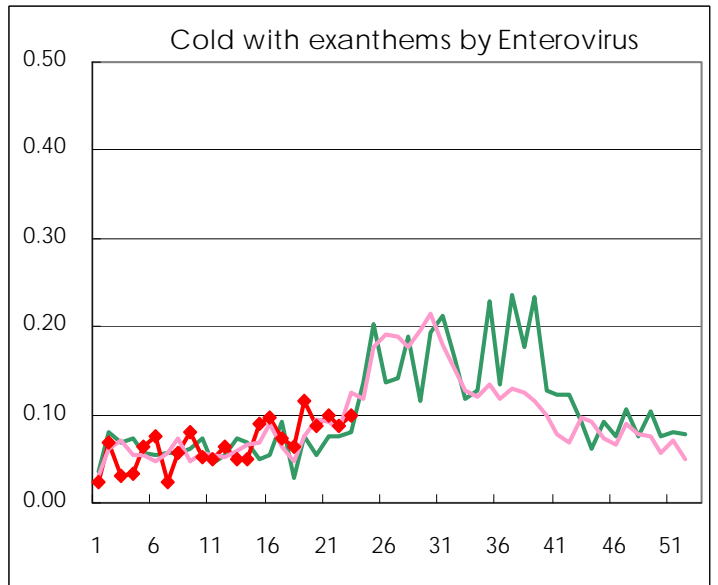
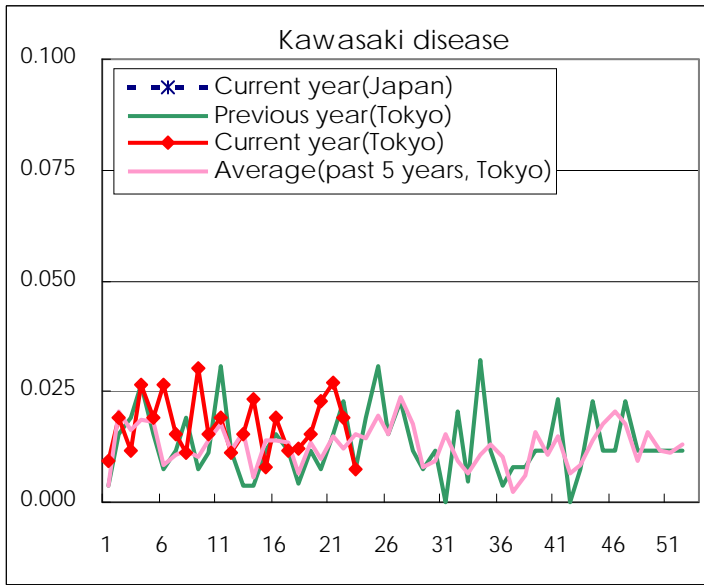
Diseases	Tokyo				
	20th	21st	22nd	23rd	/sentinel
Respiratory syncytial virus infection	17	37	23	22	0.08
Pharyngoconjunctival fever	146	203	226	209	0.80
Group A streptococcal pharyngitis	852	767	741	730	2.79
Infectious gastroenteritis	2,134	1,906	1,820	1,654	6.31
Chickenpox	247	342	304	330	1.26
Hand, foot, and mouth disease	86	118	123	168	0.64
Erythema infectiosum	40	55	39	40	0.15
Exanthem subitum	180	214	248	196	0.75
Pertussis	2			5	0.02
Herpangina	33	35	30	69	0.26
Mumps	57	61	65	56	0.21
Kawasaki disease	6	7	5	2	0.01
Cold with exanthems by Enterovirus	23	26	23	26	0.10
Influenza	308	201	148	75	0.18
Acute hemorrhagic conjunctivitis	2		1		
Epidemic keratoconjunctivitis	20	31	19	16	0.42
Bacterial meningitis		2			
Aseptic meningitis	4	4		1	0.04
Mycoplasma pneumonia	6	10	7	15	0.60
Chlamydial pneumonia (excluding psittacosis)	1	2			
Influenza-Associated Hospitalizations	2	1	1		

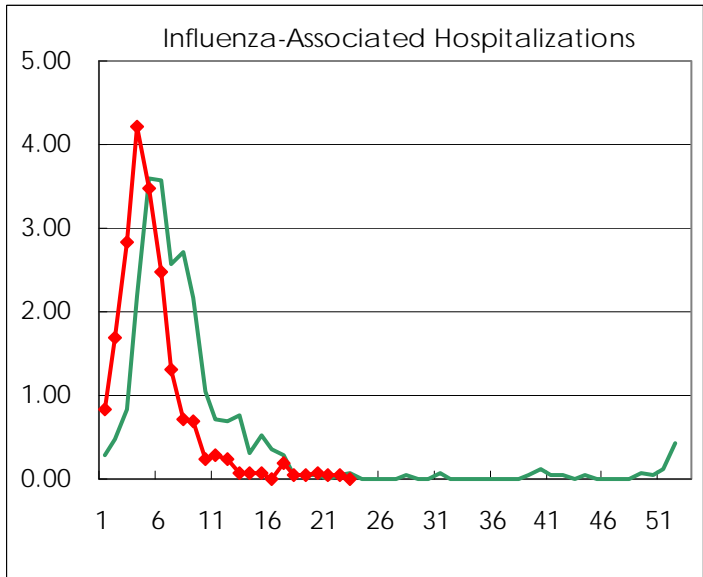
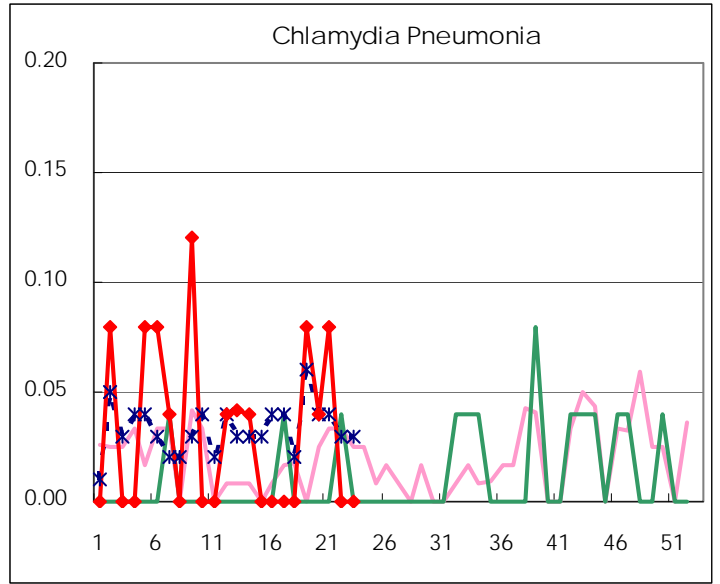
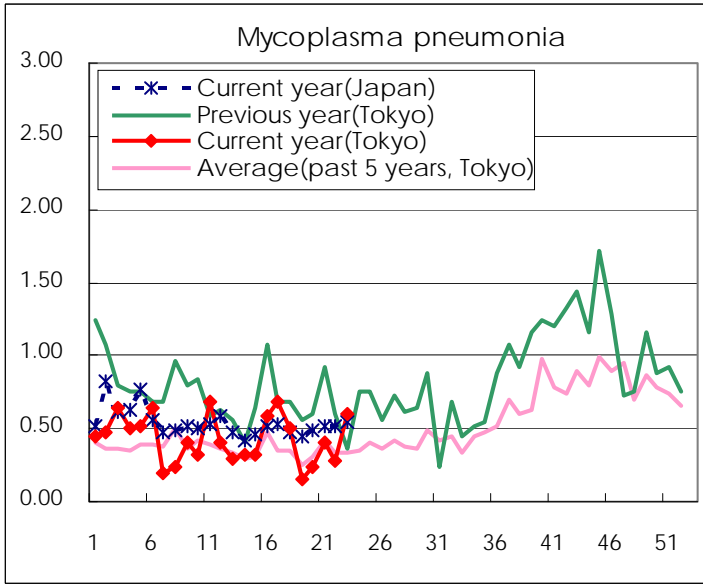
( Blank means 0. )

# Disease Trend Graph (weekly reported cases per sentinel in comparison)









Number of sentinel facilities for weekly reporting		
Types of sentinels	Number of sentinels	Sentinels having reported
Pediatric	264	262
Influenza	419	415
Ophthalmic	39	38
Specially-designated	25	25

Tokyo Metropolitan Government  
Infectious Disease Surveillance Center