

---

INFECTIOUS DISEASES WEEKLY REPORT

# TOKYO IDWR

Tokyo Metropolitan Infectious Disease Surveillance Center

**20 June 2013 / Number 24**

## Surveillance System in Tokyo, Japan

The infectious diseases which all physicians must report

All physicians must report to health centers the incidence of the diseases which are shown at page one. Health centers electronically report the individual cases to Tokyo Metropolitan Infectious Disease Surveillance Center.

The infectious diseases required to be reported by the sentinels

The numbers of patients who visit the sentinel clinics or hospitals during a week are reported to health centers in Tokyo. And they electronically report the numbers to Tokyo Metropolitan Infectious Disease Surveillance Center. We have about 500 sentinel clinics and hospitals in Tokyo.

1st Week is early January and 52nd Week is end of December.

Tokyo Metropolitan Institute of Public Health

TEL:81-3-3363-3213 FAX:81-3-5332-7365

e-mail:[idsc@tokyo-eiken.go.jp](mailto:idsc@tokyo-eiken.go.jp)

URL:[idsc.tokyo-eiken.go.jp/](http://idsc.tokyo-eiken.go.jp/)

---

Number of patients with the diseases which all physicians must report

Category	Diseases	Tokyo					Japan	
		21st	22nd	23rd	24th	Cum 2013	24th	Cum 2013
I	Ebola hemorrhagic fever							
	Crimean-Congo hemorrhagic fever							
	Smallpox							
	South American hemorrhagic fever							
	Plague							
	Marburg disease							
	Lassa fever							
II	Acute poliomyelitis							
	Tuberculosis	65	79	107	67	1,733	383	11,288
	Diphtheria							
	Severe Acute Respiratory Syndrome(SARS)							
	Avian influenza H5N1							
※	Avian influenza H7N9							
III	Cholera							1
	Shigellosis		1	1	1	14	5	60
	Enterohemorrhagic Escherichia coli infection	3	9	7	7	51	71	506
	Typhoid fever					13		27
	Paratyphoid fever	4		1		14		32
IV	Hepatitis E		1		1	19	3	61
	West Nile fever							
	Hepatitis A				1	12	3	76
	Echinococcosis							7
	Yellow fever							
	Psittacosis					2		6
	Omsk hemorrhagic fever							
	Relapsing fever							
	Kyasanur forest disease							
	Q fever	1				2		2
	Rabies							
	Coccidioidomycosis	1				3		3
	Monkeypox							
	Severe Fever with Thrombocytopenia Syndrome						3	20
	Hemorrhagic fever with renal syndrome							
	Western equine encephalitis							
	Tick-borne encephalitis							
	Anthrax							
	Chikungunya fever					2		6
	Scrub typhus(Tsutsugamushi disease)						17	100
	Dengue fever					18	1	72
	Eastern equine encephalitis							
	Avian influenza (excluding H5N1 and H7N9)							
	Nipah virus infection							
	Japanese spotted fever						3	25
	Japanese encephalitis							
	Hantavirus pulmonary syndrome							
	Herpes B virus infection							
	Glanders							
	Brucellosis							1
	Venezuelan equine encephalitis							
	Hendra virus infection							
Epidemic typhus								
Botulism								
Malaria						5	18	
Tularemia								
Lyme disease							1	
Lyssavirus infection(excluding rabies)								
Rift valley fever								
Melioidosis						1	2	
Legionellosis	1	1	1	2	27	14	310	
Leptospirosis							4	
Rocky mountain spotted fever								

Category	Diseases	Tokyo					Japan	
		21st	22nd	23rd	24th	Cum 2013	24th	Cum 2013
V	Amebiasis	2	3	7	4	95	15	462
	Viral hepatitis(excluding hepatitis A and E)	3	3	1	1	35	2	118
	Acute encephalitis(excluding JE and WNE)		2	1	1	25	3	192
	Cryptosporidiosis					1		1
	Creutzfeldt-Jakob disease			1		6	1	78
	Severe invasive streptococcal infections(TSLS)		2			16		100
	Acquired immunodeficiency syndrome (AIDS)	9	14	19	9	216	27	688
	Giardiasis		1	1	1	12	2	33
	Invasive <i>Haemophilus influenzae</i> disease			1		5	5	37
	Invasive meningococcal disease		1		1	5	1	10
	Invasive pneumococcal disease	6	2	5	2	40	13	376
	Meningococcal meningitis	/	/	/	/			2
	Congenital rubella syndrome			1		2		6
	Syphilis	13	9	3	5	178	14	487
	Tetanus					3	5	54
	Vancomycin-resistant <i>S. aureus</i> infection							
	Vancomycin-resistant Enterococcus infection					5		30
	Rubella	156	123	113	113	2,692	550	10,822
	Measles		1	1		44	3	145

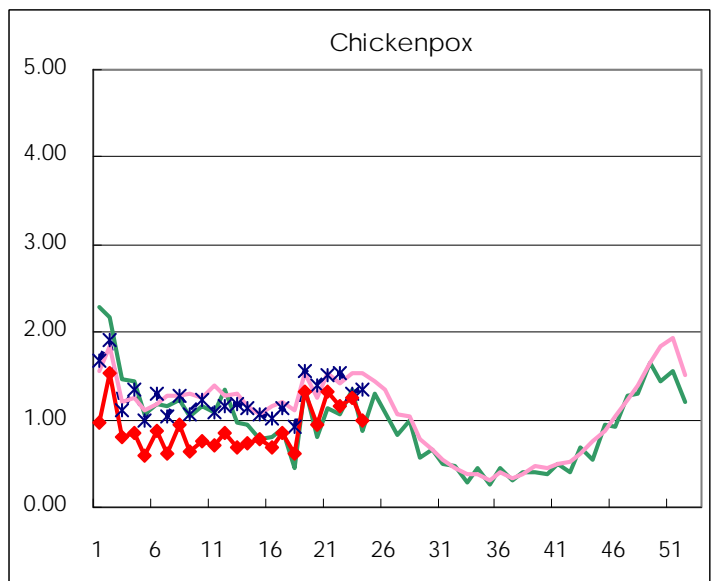
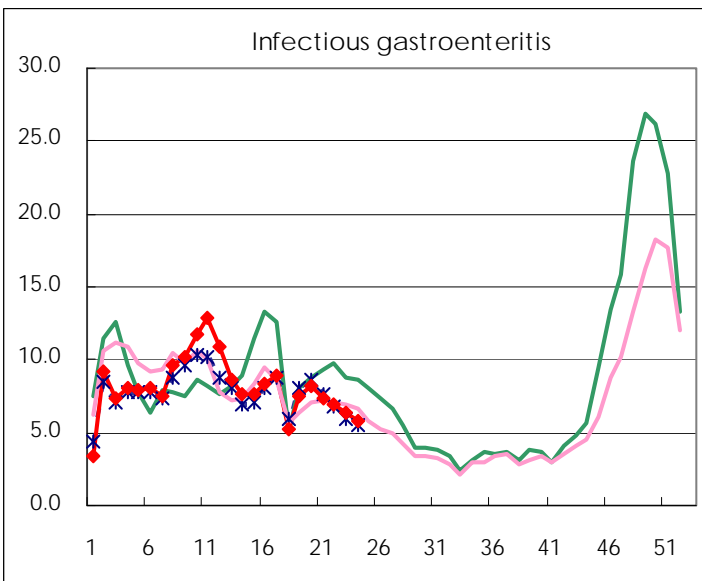
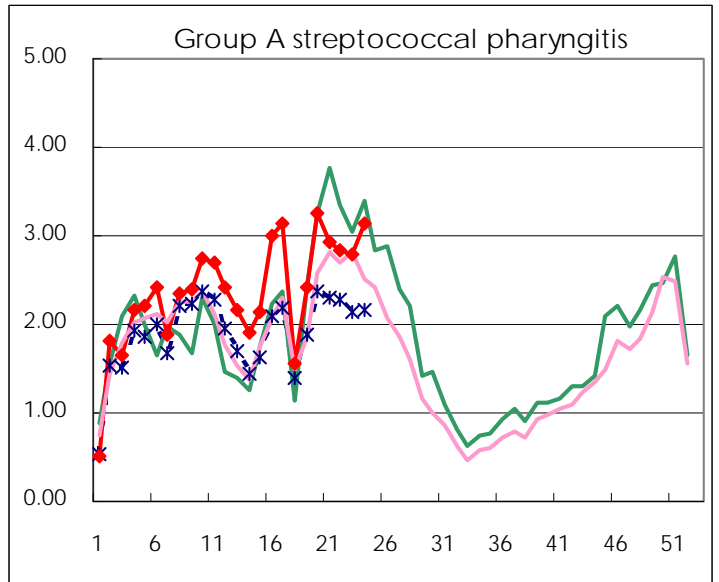
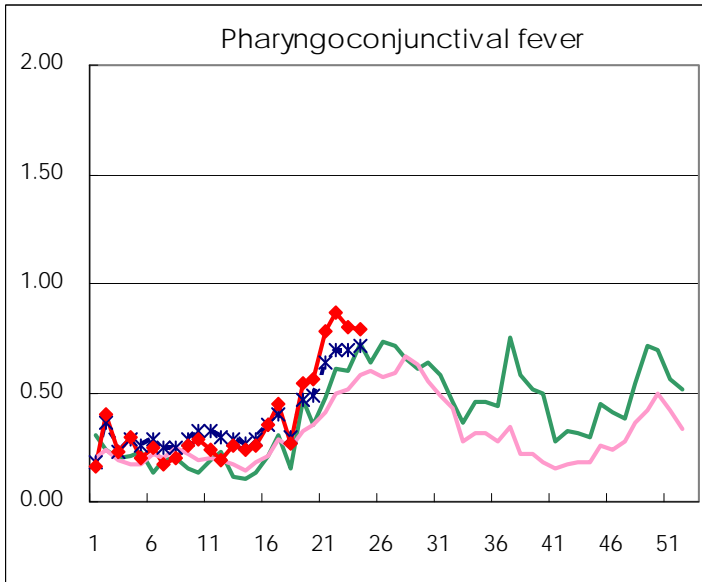
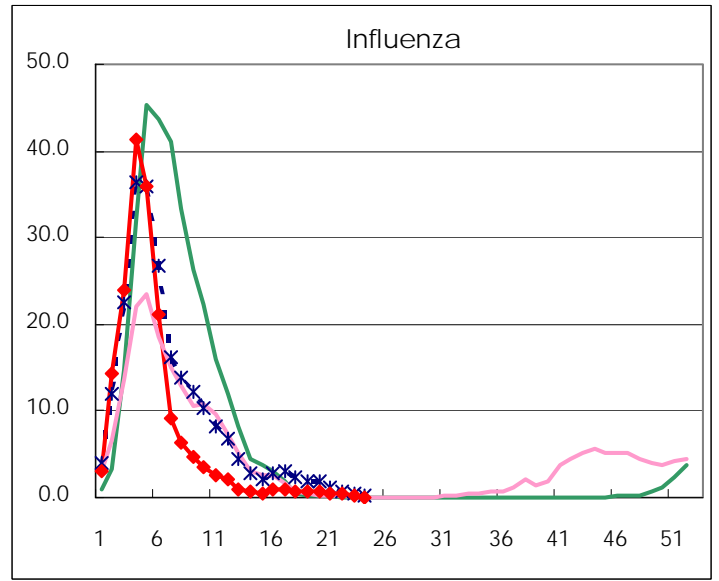
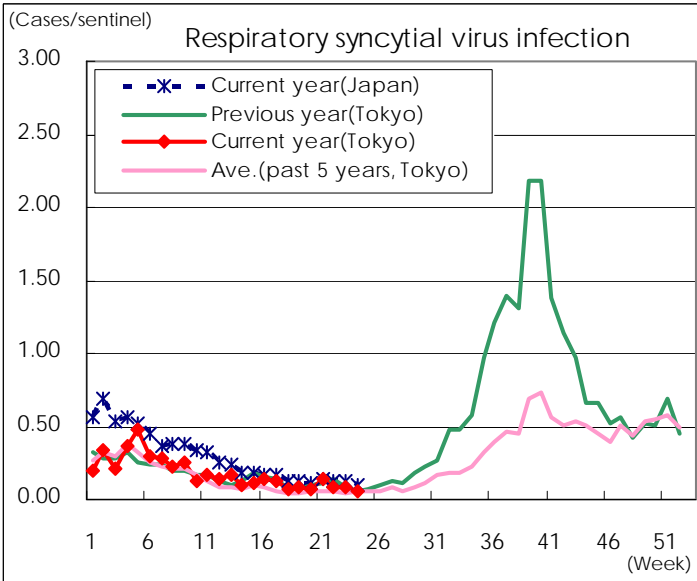
※ Designated infectious disease

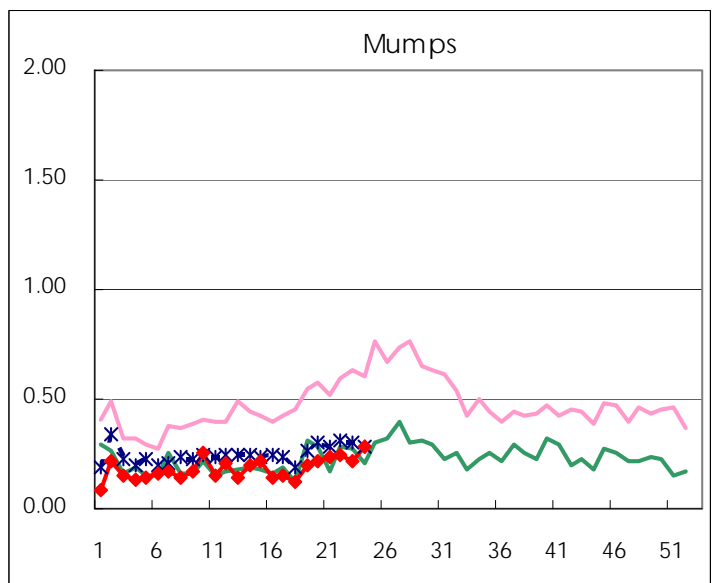
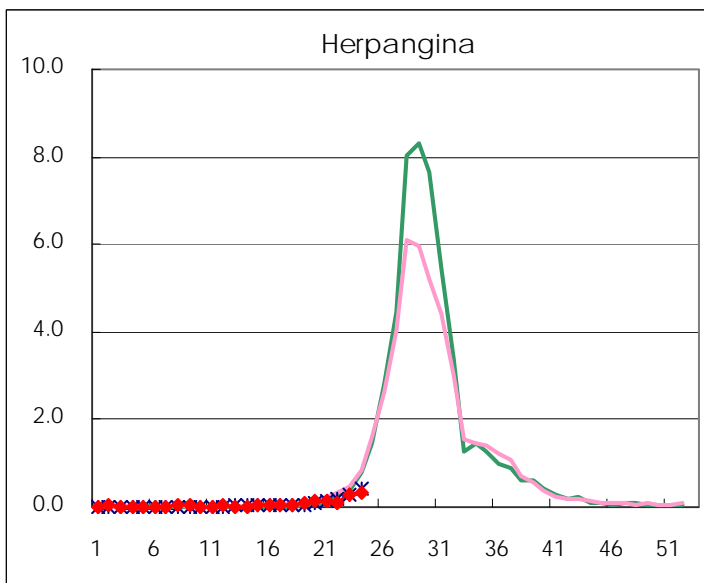
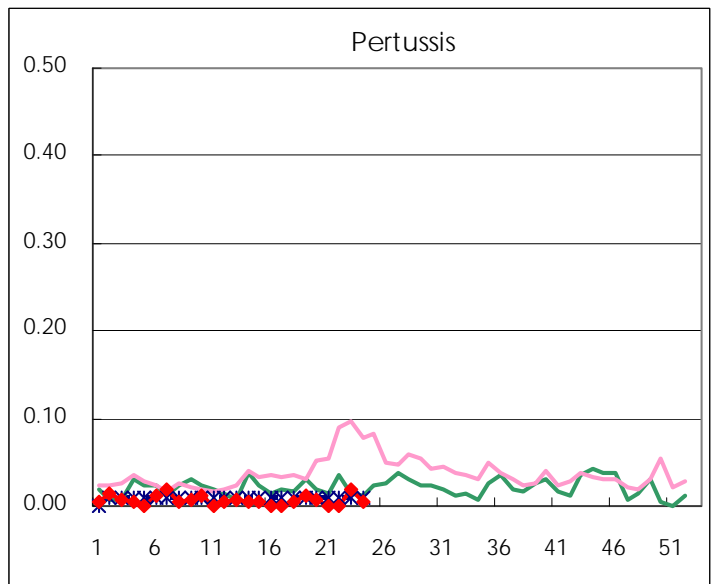
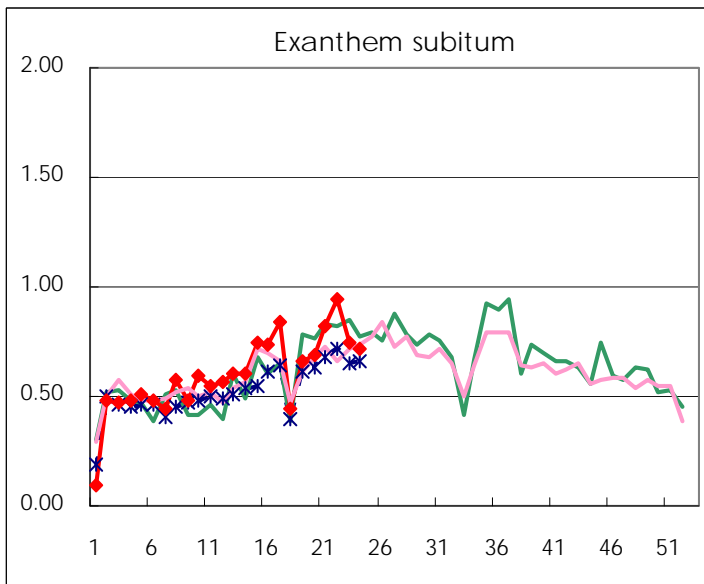
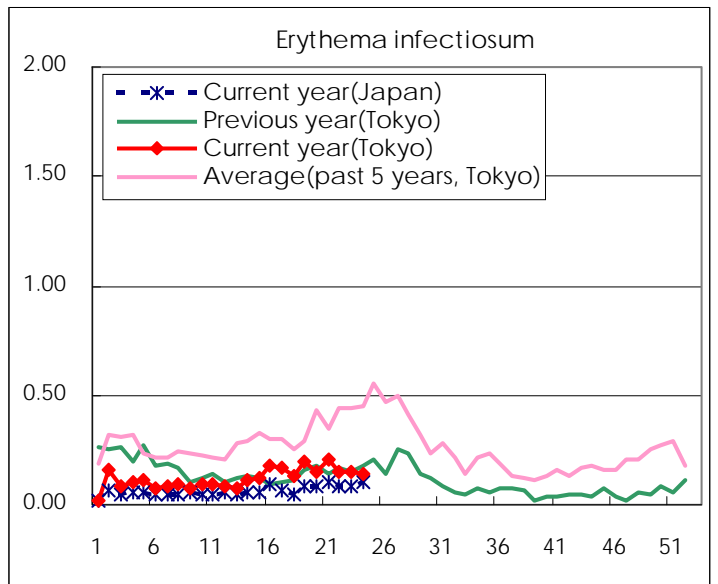
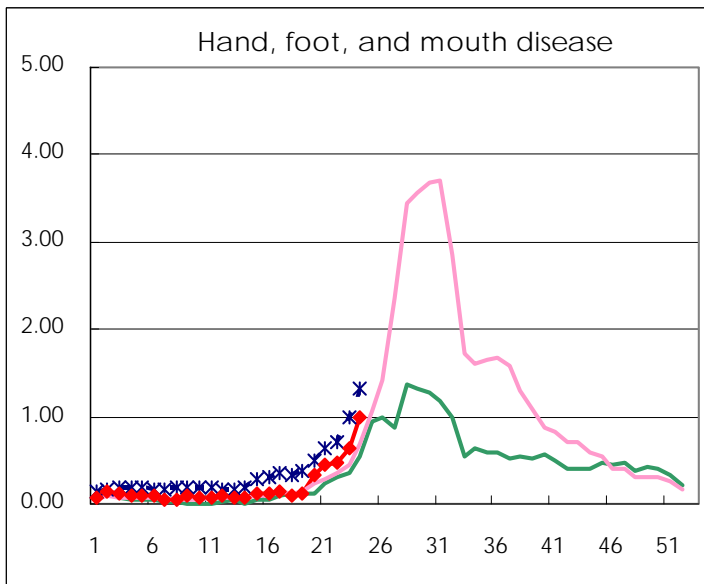
Number of patients with the diseases to be reported  
by the designated clinics and hospitals

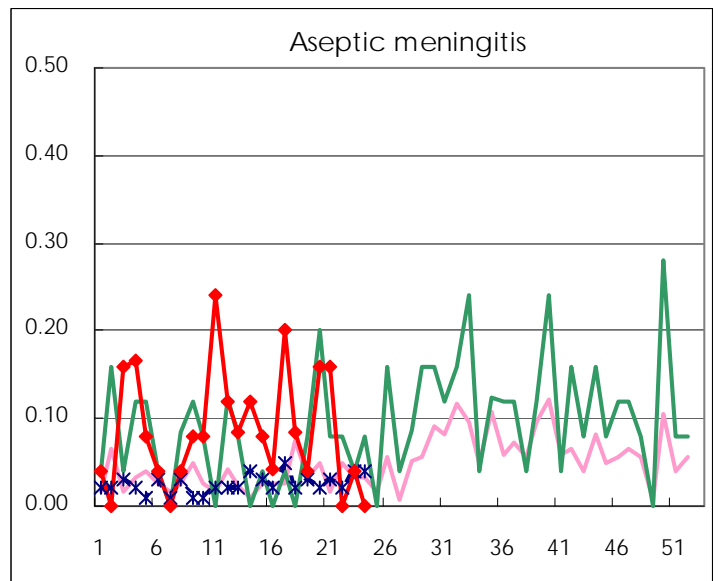
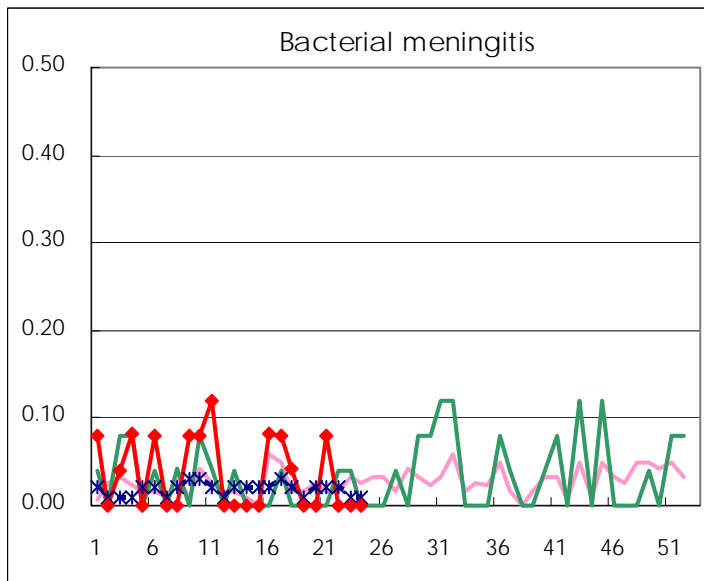
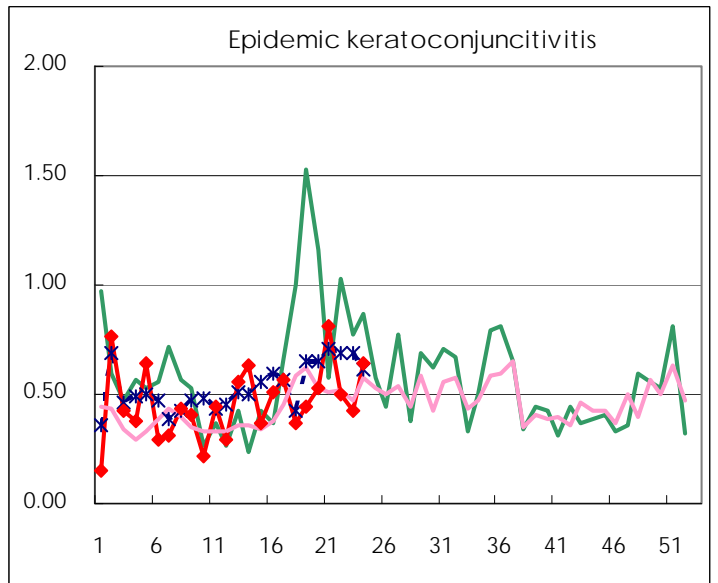
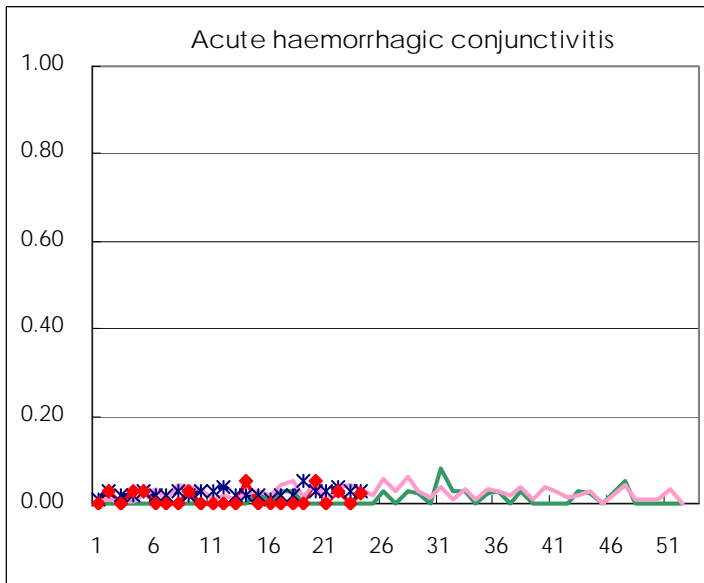
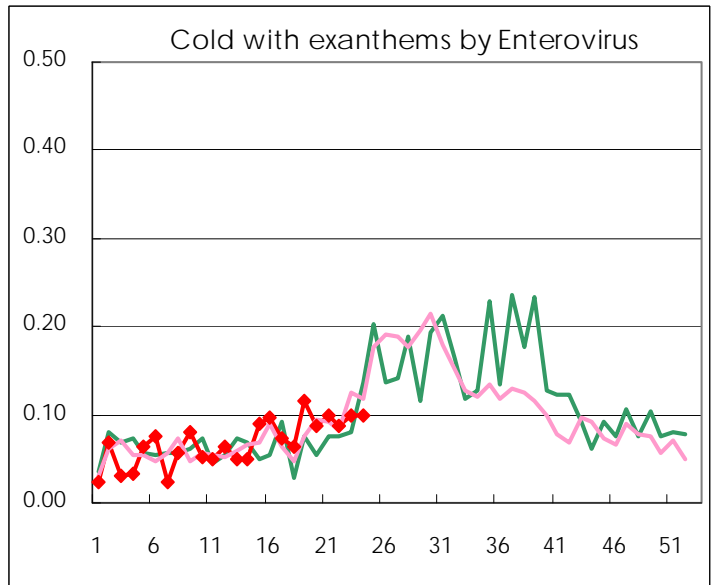
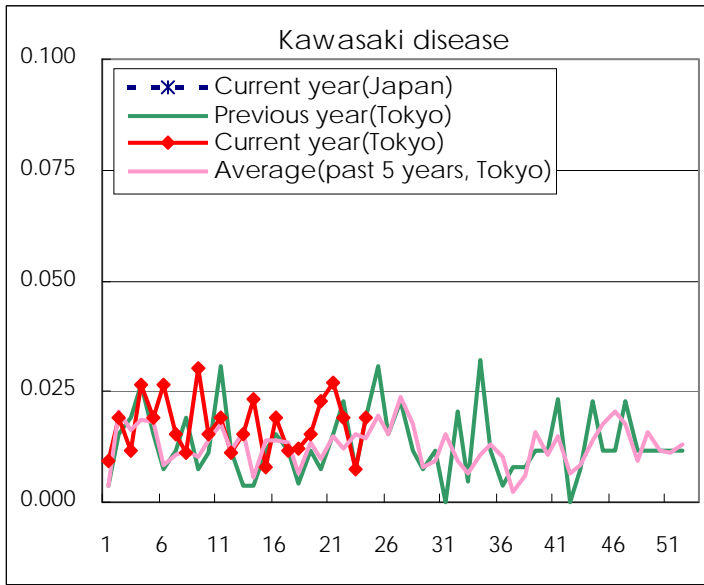
Diseases	Tokyo				
	21st	22nd	23rd	24th	/sentinel
Respiratory syncytial virus infection	37	23	22	14	0.05
Pharyngoconjunctival fever	203	226	209	208	0.79
Group A streptococcal pharyngitis	767	741	730	822	3.14
Infectious gastroenteritis	1,906	1,820	1,654	1,520	5.80
Chickenpox	342	304	330	262	1.00
Hand, foot, and mouth disease	118	123	168	260	0.99
Erythema infectiosum	55	39	40	37	0.14
Exanthem subitum	214	248	196	187	0.71
Pertussis			5	1	0.00
Herpangina	35	30	69	80	0.31
Mumps	61	65	56	73	0.28
Kawasaki disease	7	5	2	5	0.02
Cold with exanthems by Enterovirus	26	23	26	26	0.10
Influenza	201	148	75	35	0.08
Acute hemorrhagic conjunctivitis		1		1	0.03
Epidemic keratoconjunctivitis	31	19	16	25	0.64
Bacterial meningitis	2				
Aseptic meningitis	4		1		
Mycoplasma pneumonia	10	7	15	14	0.56
Chlamydial pneumonia (excluding psittacosis)	2			1	0.04
Influenza-Associated Hospitalizations	1	1		2	0.08

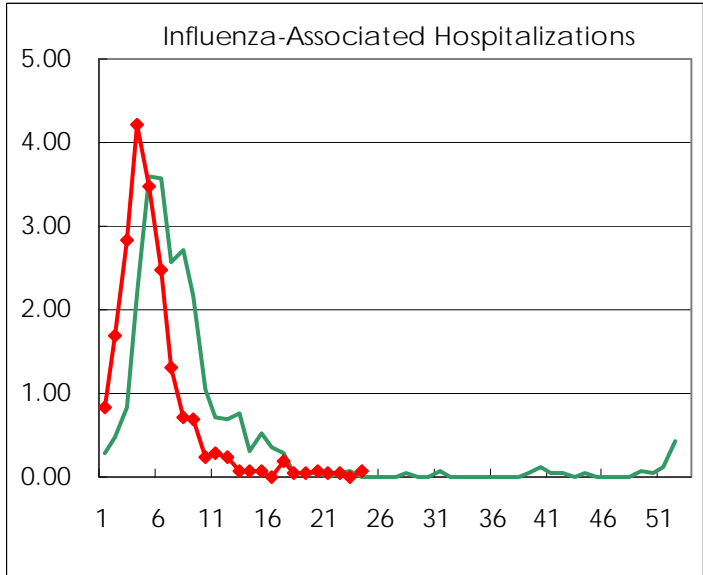
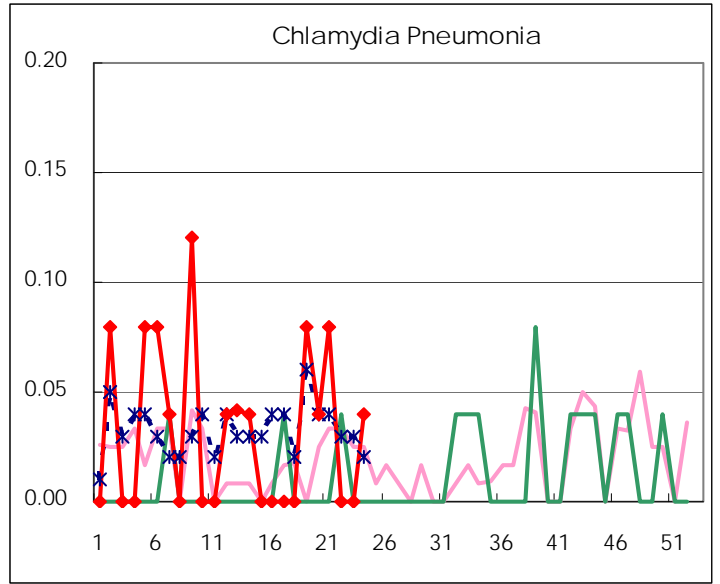
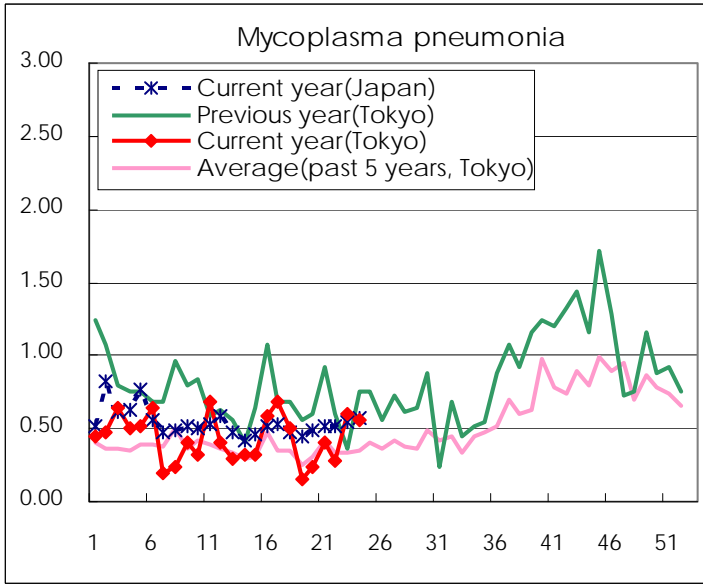
( Blank means 0. )

# Disease Trend Graph (weekly reported cases per sentinel in comparison)









Number of sentinel facilities for weekly reporting		
Types of sentinels	Number of sentinels	Sentinels having reported
Pediatric	264	262
Influenza	419	414
Ophthalmic	39	39
Specially-designated	25	25

Tokyo Metropolitan Government  
Infectious Disease Surveillance Center