

---

INFECTIOUS DISEASES WEEKLY REPORT

# TOKYO IDWR

Tokyo Metropolitan Infectious Disease Surveillance Center

---

**27 June 2013 / Number 25**

## Surveillance System in Tokyo, Japan

The infectious diseases which all physicians must report

All physicians must report to health centers the incidence of the diseases which are shown at page one. Health centers electronically report the individual cases to Tokyo Metropolitan Infectious Disease Surveillance Center.

The infectious diseases required to be reported by the sentinels

The numbers of patients who visit the sentinel clinics or hospitals during a week are reported to health centers in Tokyo. And they electronically report the numbers to Tokyo Metropolitan Infectious Disease Surveillance Center. We have about 500 sentinel clinics and hospitals in Tokyo.

1st Week is early January and 52nd Week is end of December.

Tokyo Metropolitan Institute of Public Health

TEL:81-3-3363-3213 FAX:81-3-5332-7365

e-mail:[idsc@tokyo-eiken.go.jp](mailto:idsc@tokyo-eiken.go.jp)

URL:[idsc.tokyo-eiken.go.jp/](http://idsc.tokyo-eiken.go.jp/)

---

## Number of patients with the diseases which all physicians must report

Category	Diseases	Tokyo				Japan		
		22nd	23rd	24th	25th	Cum 2013	25th	Cum 2013
I	Ebola hemorrhagic fever							
	Crimean-Congo hemorrhagic fever							
	Smallpox							
	South American hemorrhagic fever							
	Plague							
	Marburg disease							
	Lassa fever							
II	Acute poliomyelitis							
	Tuberculosis	79	107	81	95	1,842	440	11,932
	Diphtheria							
	Severe Acute Respiratory Syndrome(SARS)							
	Avian influenza H5N1							
※	Avian influenza H7N9							
III	Cholera							1
	Shigellosis	1	1	1	1	15	4	64
	Enterohemorrhagic Escherichia coli infection	9	7	7	9	60	78	596
	Typhoid fever					13	2	29
	Paratyphoid fever		1			14		32
IV	Hepatitis E	1		1	2	21	4	66
	West Nile fever							
	Hepatitis A			1	1	13	4	82
	Echinococcosis							8
	Yellow fever							
	Psittacosis					2		6
	Omsk hemorrhagic fever							
	Relapsing fever							
	Kyasanur forest disease							
	Q fever					2		2
	Rabies							
	Coccidioidomycosis					3		3
	Monkeypox							
	Severe Fever with Thrombocytopenia Syndrome							20
	Hemorrhagic fever with renal syndrome							
	Western equine encephalitis							
	Tick-borne encephalitis							
	Anthrax							
	Chikungunya fever					2		6
	Scrub typhus(Tsutsugamushi disease)						5	108
	Dengue fever				2	20	7	79
	Eastern equine encephalitis							
	Avian influenza (excluding H5N1 and H7N9)							
	Nipah virus infection							
	Japanese spotted fever						4	29
	Japanese encephalitis							
	Hantavirus pulmonary syndrome							
	Herpes B virus infection							
	Glanders							
	Brucellosis							1
	Venezuelan equine encephalitis							
	Hendra virus infection							
Epidemic typhus								
Botulism								
Malaria					5	3	21	
Tularemia								
Lyme disease							1	
Lyssavirus infection(excluding rabies)								
Rift valley fever								
Melioidosis					1		2	
Legionellosis	1	1	2	1	28	16	328	
Leptospirosis							4	
Rocky mountain spotted fever								

Category	Diseases	Tokyo					Japan	
		22nd	23rd	24th	25th	Cum 2013	25th	Cum 2013
V	Amebiasis	3	7	4	8	103	12	479
	Viral hepatitis(excluding hepatitis A and E)	3	1	1		35	3	124
	Acute encephalitis(excluding JE and WNE)	2	1	1		25	2	196
	Cryptosporidiosis					1		2
	Creutzfeldt-Jakob disease		1	1		7	3	86
	Severe invasive streptococcal infections(TSLS)	2			2	18	1	104
	Acquired immunodeficiency syndrome (AIDS)	14	19	9	11	227	16	719
	Giardiasis	1	1	1		12	2	35
	Invasive <i>Haemophilus influenzae</i> disease		1			5	2	41
	Invasive meningococcal disease	1		1		5		10
	Invasive pneumococcal disease	2	5	2	4	44	10	398
	Meningococcal meningitis							2
	Congenital rubella syndrome		1		1	3	1	7
	Syphilis	9	3	5	7	185	15	509
	Tetanus					3	3	57
	Vancomycin-resistant <i>S. aureus</i> infection							
	Vancomycin-resistant <i>Enterococcus</i> infection				1	6	2	32
	Rubella	123	113	113	118	2,810	504	11,489
Measles	1	1	2	3	49	7	152	

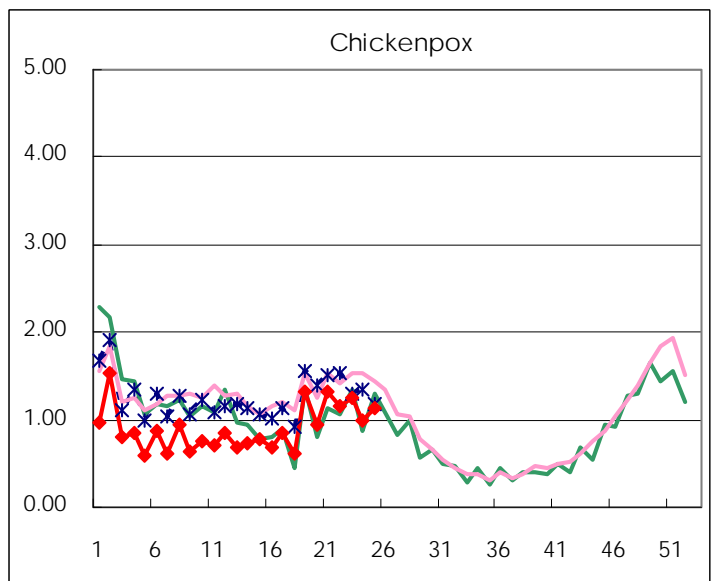
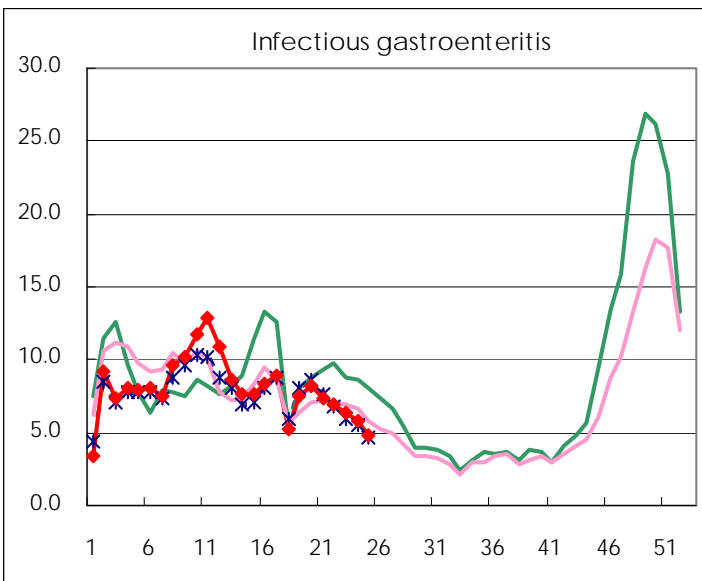
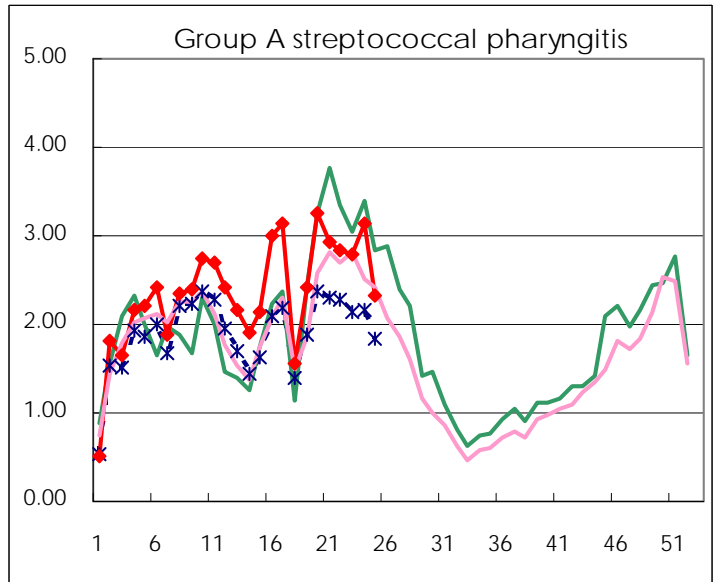
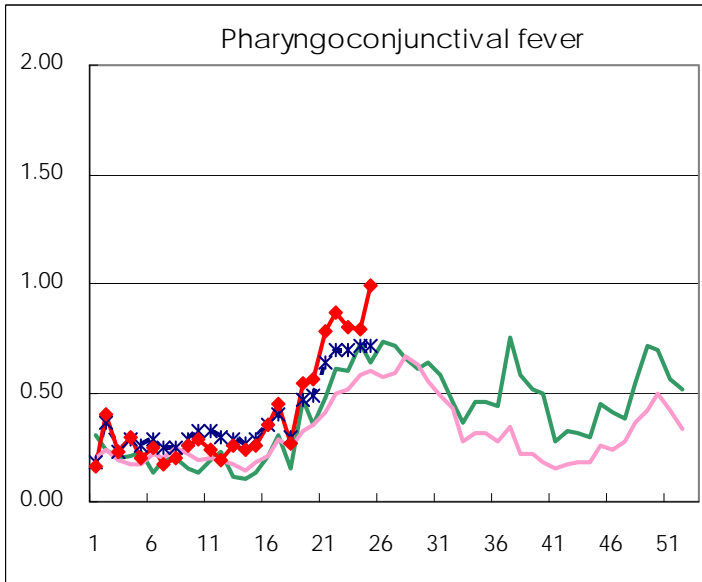
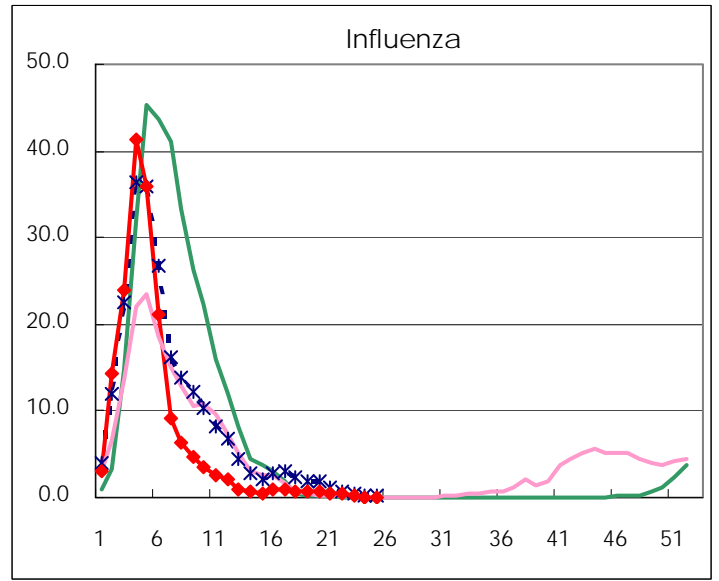
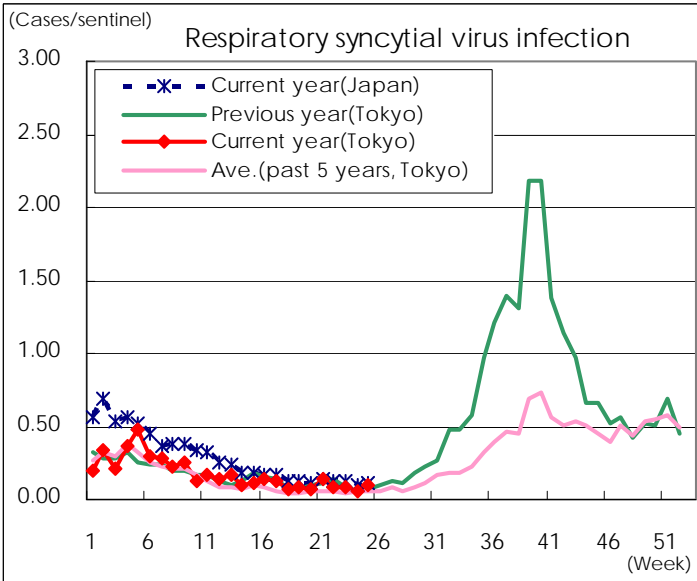
※ Designated infectious disease

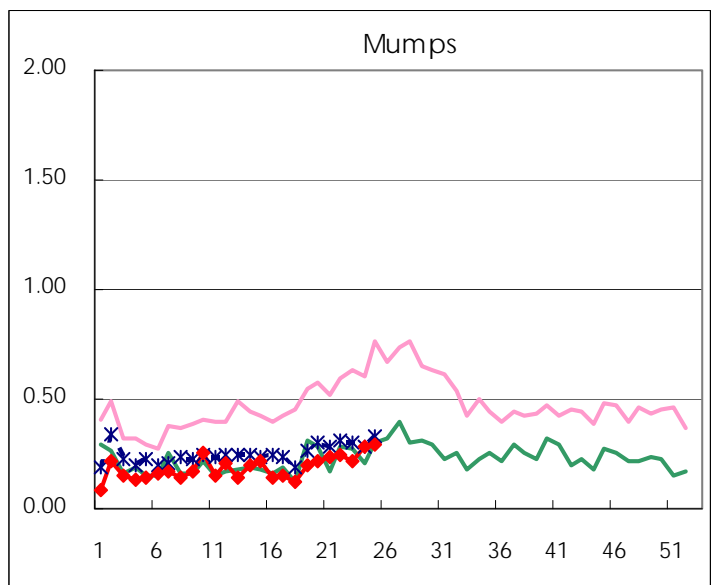
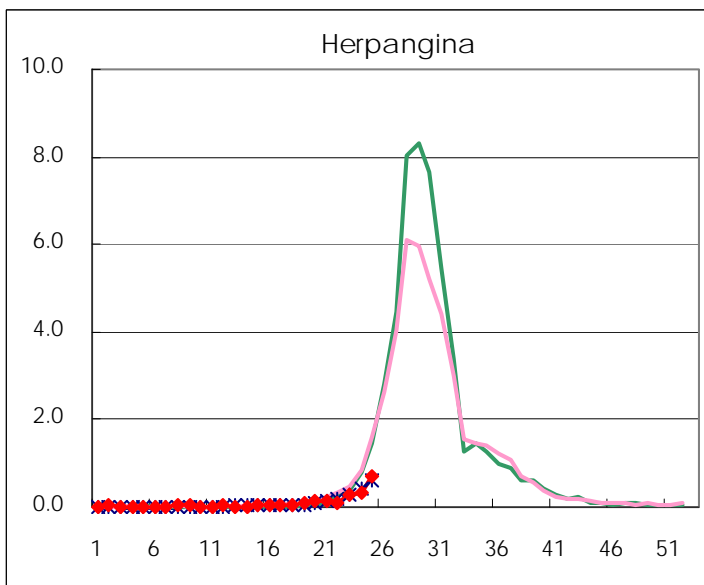
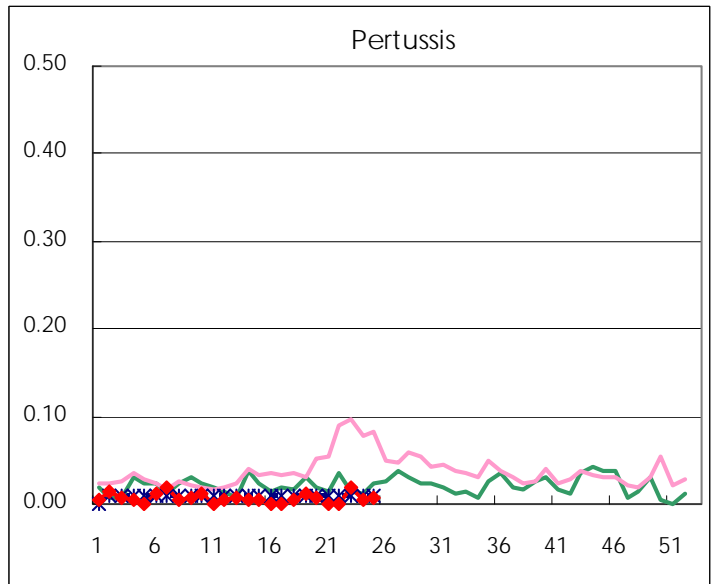
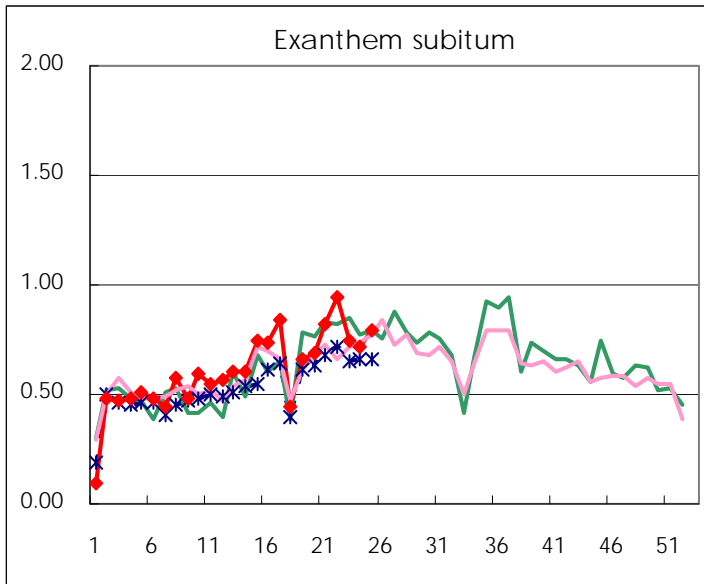
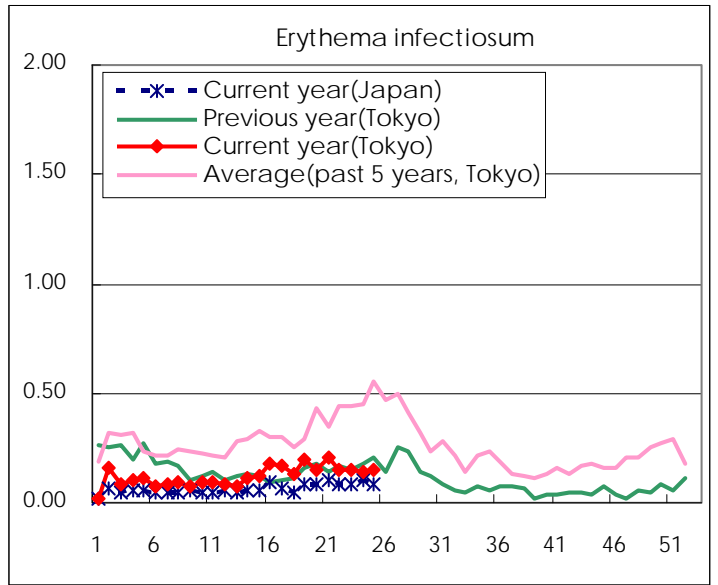
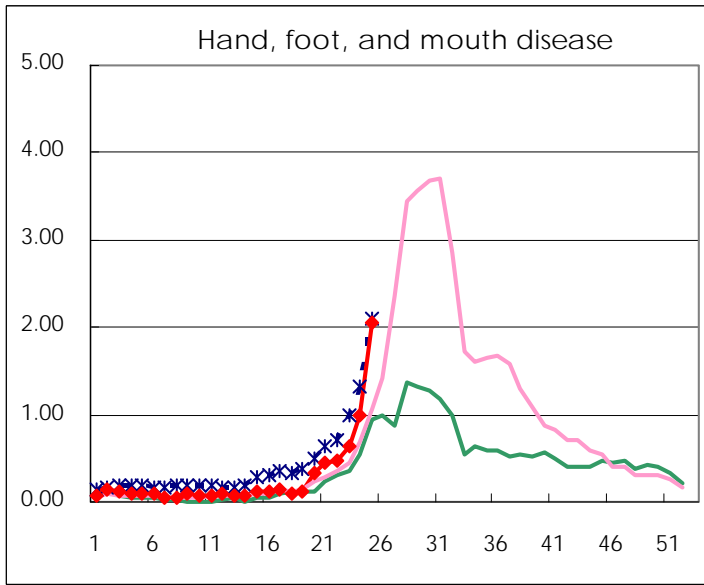
Number of patients with the diseases to be reported  
by the designated clinics and hospitals

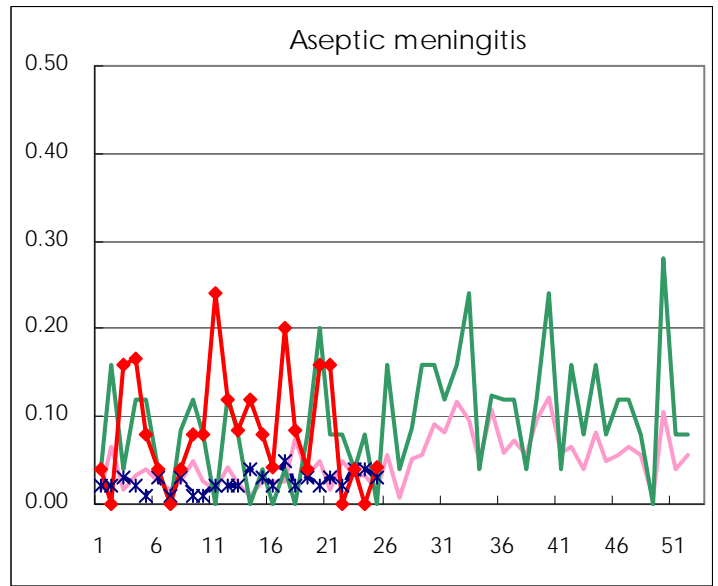
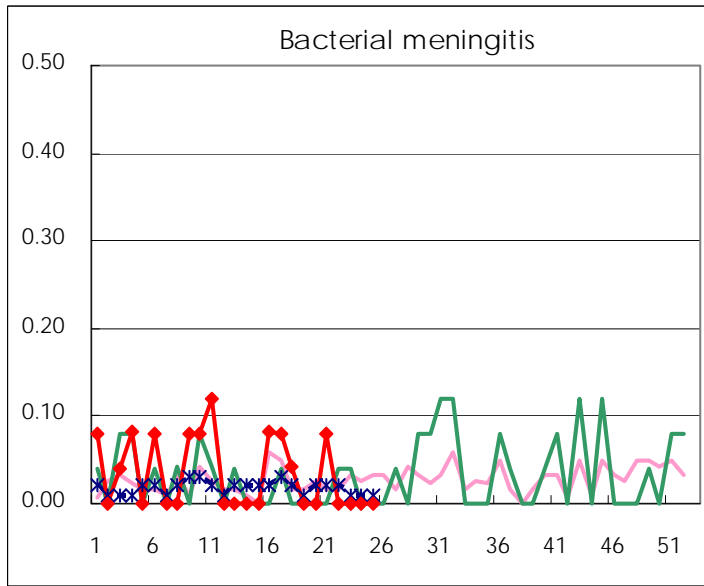
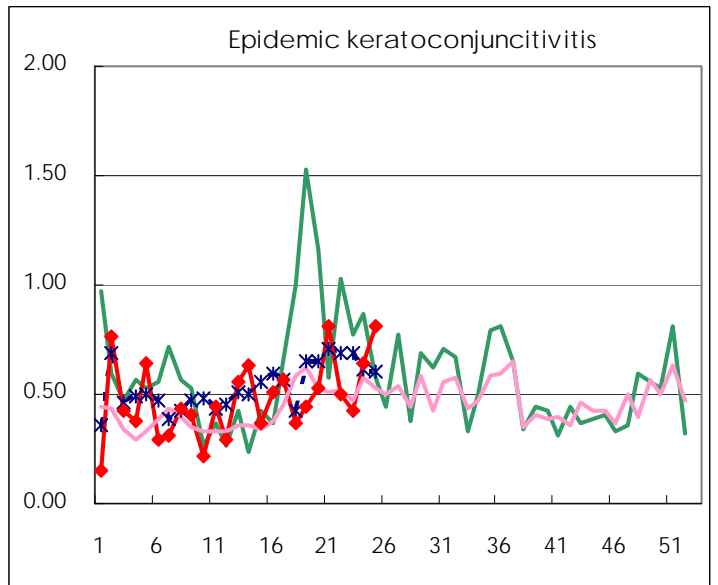
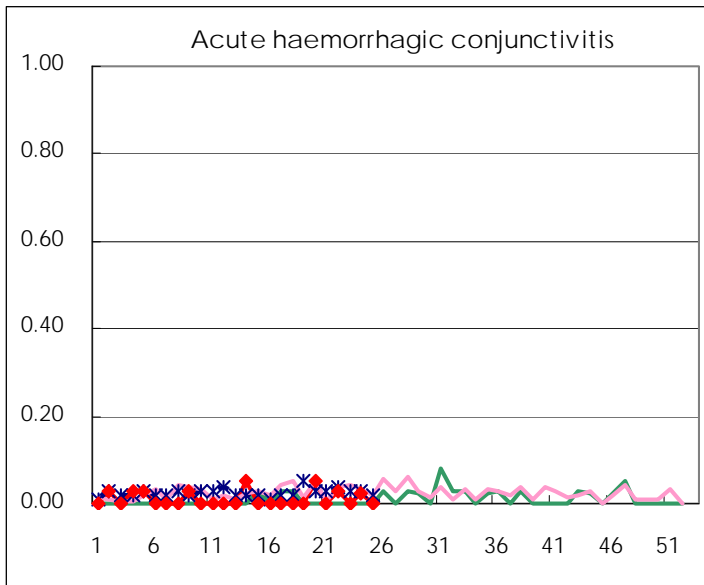
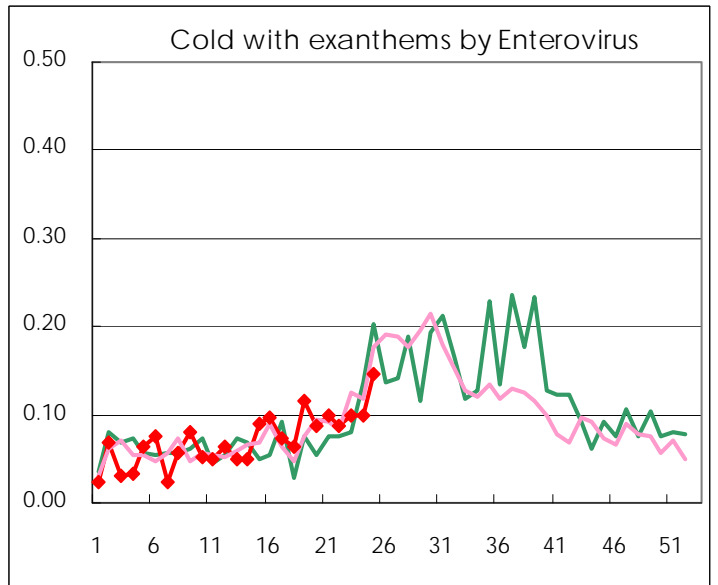
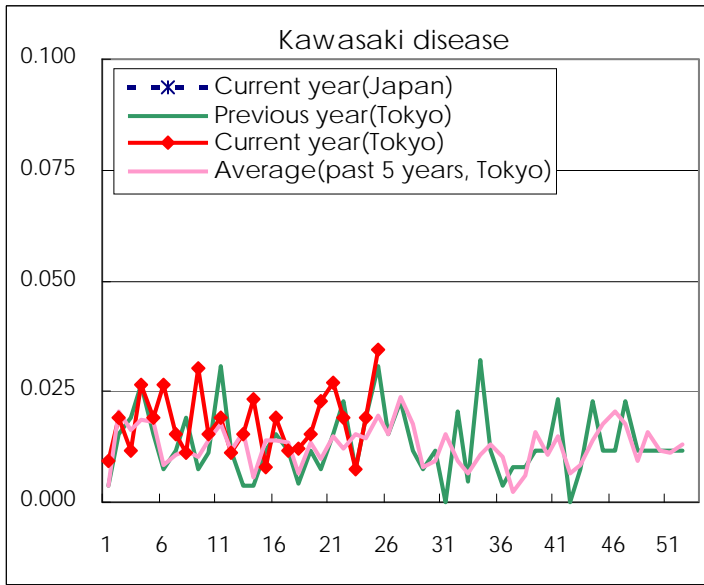
Diseases	Tokyo				
	22nd	23rd	24th	25th	/sentinel
Respiratory syncytial virus infection	23	22	14	24	0.09
Pharyngoconjunctival fever	226	209	208	258	0.99
Group A streptococcal pharyngitis	741	730	822	607	2.33
Infectious gastroenteritis	1,820	1,654	1,520	1,240	4.75
Chickenpox	304	330	262	297	1.14
Hand, foot, and mouth disease	123	168	260	536	2.05
Erythema infectiosum	39	40	37	39	0.15
Exanthem subitum	248	196	187	206	0.79
Pertussis		5	1	2	0.01
Herpangina	30	69	80	183	0.70
Mumps	65	56	73	76	0.29
Kawasaki disease	5	2	5	9	0.03
Cold with exanthems by Enterovirus	23	26	26	38	0.15
Influenza	148	75	35	28	0.07
Acute hemorrhagic conjunctivitis	1		1		
Epidemic keratoconjunctivitis	19	16	25	31	0.82
Bacterial meningitis					
Aseptic meningitis		1		1	0.04
Mycoplasma pneumonia	7	15	14	13	0.54
Chlamydial pneumonia (excluding psittacosis)			1	2	0.08
Influenza-Associated Hospitalizations	1		2		

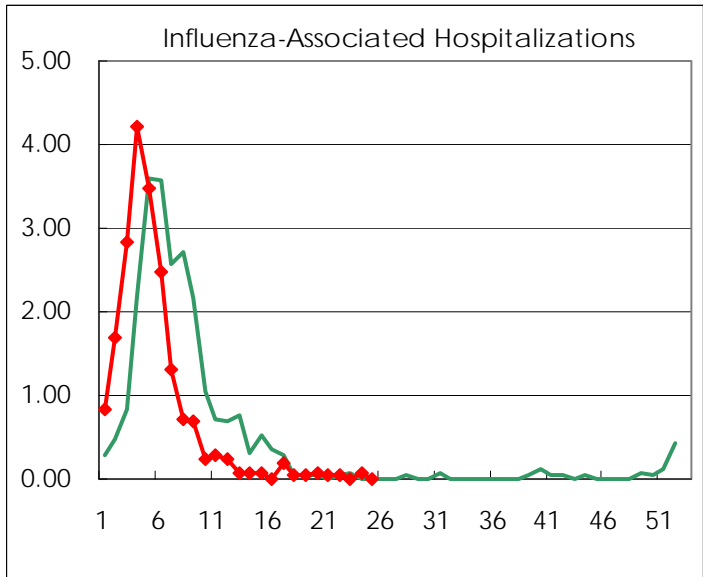
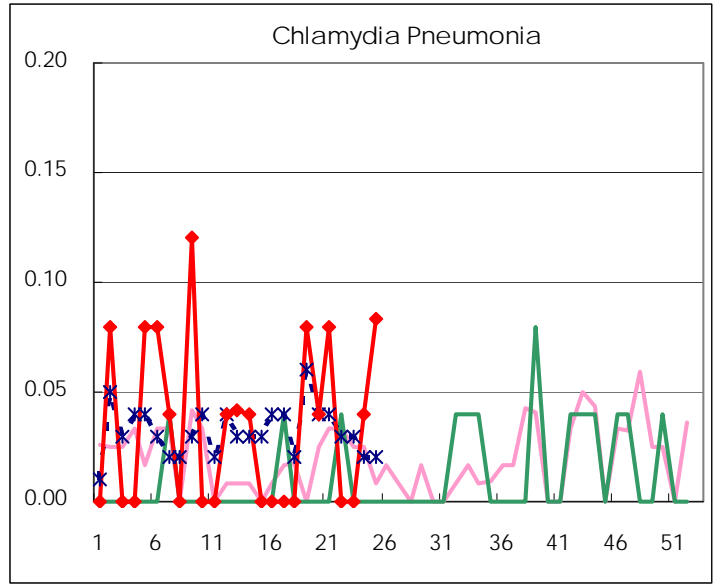
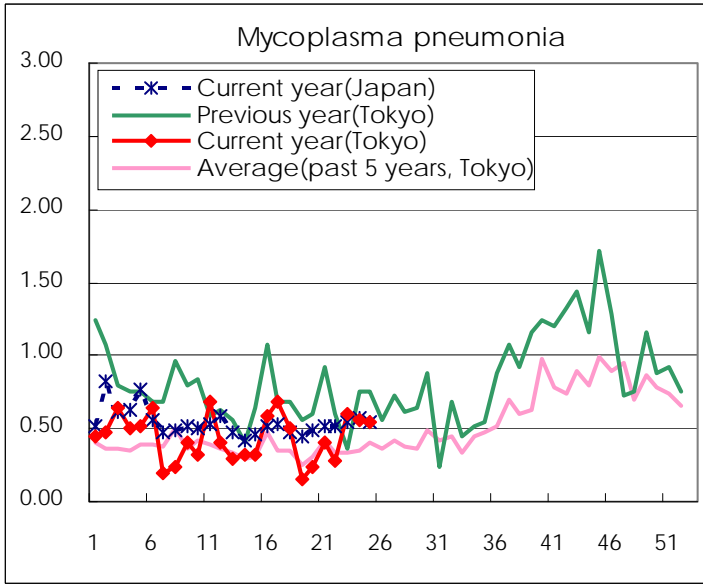
( Blank means 0. )

# Disease Trend Graph (weekly reported cases per sentinel in comparison)









Number of sentinel facilities for weekly reporting		
Types of sentinels	Number of sentinels	Sentinels having reported
Pediatric	264	261
Influenza	419	413
Ophthalmic	39	38
Specially-designated	25	24

Tokyo Metropolitan Government  
Infectious Disease Surveillance Center