
INFECTIOUS DISEASES WEEKLY REPORT

TOKYO IDWR

Tokyo Metropolitan Infectious Disease Surveillance Center

4 July 2013 / Number 26

Surveillance System in Tokyo, Japan

The infectious diseases which all physicians must report

All physicians must report to health centers the incidence of the diseases which are shown at page one. Health centers electronically report the individual cases to Tokyo Metropolitan Infectious Disease Surveillance Center.

The infectious diseases required to be reported by the sentinels

The numbers of patients who visit the sentinel clinics or hospitals during a week are reported to health centers in Tokyo. And they electronically report the numbers to Tokyo Metropolitan Infectious Disease Surveillance Center. We have about 500 sentinel clinics and hospitals in Tokyo.

1st Week is early January and 52nd Week is end of December.

Tokyo Metropolitan Institute of Public Health

TEL:81-3-3363-3213 FAX:81-3-5332-7365

e-mail:idsc@tokyo-eiken.go.jp

URL:idsc.tokyo-eiken.go.jp/

Number of patients with the diseases which all physicians must report

Category	Diseases	Tokyo				Japan		
		23rd	24th	25th	26th	Cum 2013	26th	Cum 2013
I	Ebola hemorrhagic fever							
	Crimean-Congo hemorrhagic fever							
	Smallpox							
	South American hemorrhagic fever							
	Plague							
	Marburg disease							
	Lassa fever							
II	Acute poliomyelitis							
	Tuberculosis	108	81	105	105	1,958	448	12,552
	Diphtheria							
	Severe Acute Respiratory Syndrome(SARS)							
	Avian influenza H5N1							
※	Avian influenza H7N9							
III	Cholera							1
	Shigellosis	1	1	1		15	5	69
	Enterohemorrhagic Escherichia coli infection	7	7	9	9	69	118	728
	Typhoid fever					13	1	30
	Paratyphoid fever	1				14		32
IV	Hepatitis E		1	2		21		66
	West Nile fever							
	Hepatitis A		1	1		13	2	83
	Echinococcosis							9
	Yellow fever							
	Psittacosis					2		6
	Omsk hemorrhagic fever							
	Relapsing fever							
	Kyasanur forest disease							
	Q fever				1	3		3
	Rabies							
	Coccidioidomycosis					3		3
	Monkeypox							
	Severe Fever with Thrombocytopenia Syndrome						2	22
	Hemorrhagic fever with renal syndrome							
	Western equine encephalitis							
	Tick-borne encephalitis							
	Anthrax							
	Chikungunya fever					2		6
	Scrub typhus(Tsutsugamushi disease)						8	119
	Dengue fever			3		21	5	87
	Eastern equine encephalitis							
	Avian influenza (excluding H5N1 and H7N9)							
	Nipah virus infection							
	Japanese spotted fever						5	35
	Japanese encephalitis							
	Hantavirus pulmonary syndrome							
	Herpes B virus infection							
	Glanders							
	Brucellosis							1
	Venezuelan equine encephalitis							
	Hendra virus infection							
	Epidemic typhus							
Botulism								
Malaria						5	21	
Tularemia								
Lyme disease							3	
Lyssavirus infection(excluding rabies)								
Rift valley fever								
Melioidosis						1	2	
Legionellosis	1	2	1	3	31	29	361	
Leptospirosis							4	
Rocky mountain spotted fever								

Category	Diseases	Tokyo				Cum 2013	Japan	
		23rd	24th	25th	26th		26th	Cum 2013
V	Amebiasis	7	4	8	3	106	13	500
	Viral hepatitis(excluding hepatitis A and E)	1	1			35	2	128
	Acute encephalitis(excluding JE and WNE)	1	1		2	27	2	201
	Cryptosporidiosis					1		2
	Creutzfeldt-Jakob disease	1	1		1	8	3	93
	Severe invasive streptococcal infections(TSLS)			2		18	5	110
	Acquired immunodeficiency syndrome (AIDS)	19	9	12	8	236	19	757
	Giardiasis	1	1			12		35
	Invasive <i>Haemophilus influenzae</i> disease	1				5	1	44
	Invasive meningococcal disease		1		1	6	1	11
	Invasive pneumococcal disease	5	2	5	2	47	10	418
	Meningococcal meningitis							2
	Congenital rubella syndrome	1		1		3		7
	Syphilis	3	5	7	7	192	24	545
	Tetanus					3	4	61
	Vancomycin-resistant <i>S. aureus</i> infection							
	Vancomycin-resistant Enterococcus infection			1		6		31
	Rubella	113	115	120	92	2,906	359	11,991
	Measles	1	2	2		48	7	155

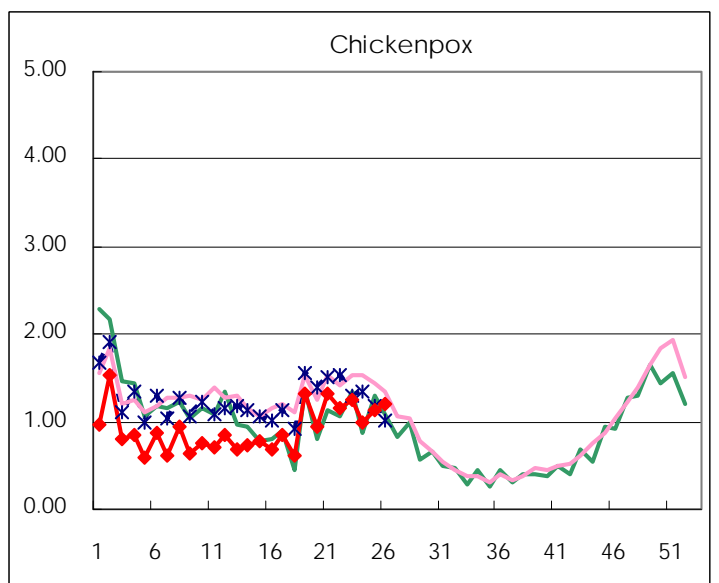
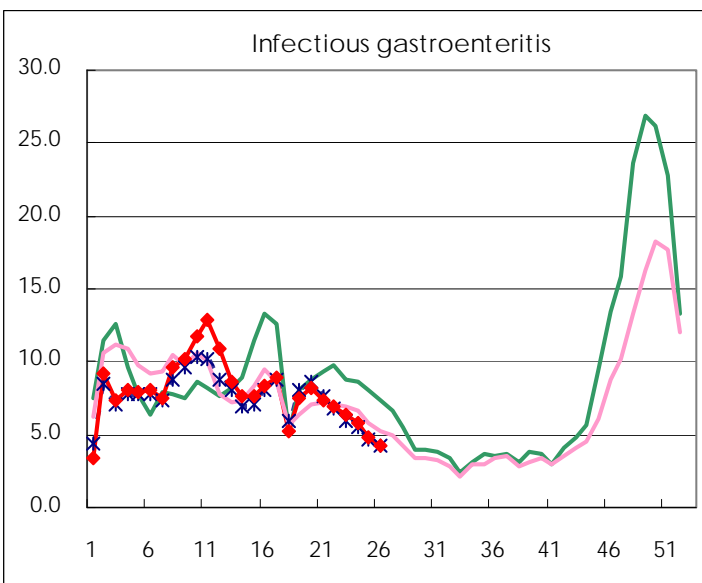
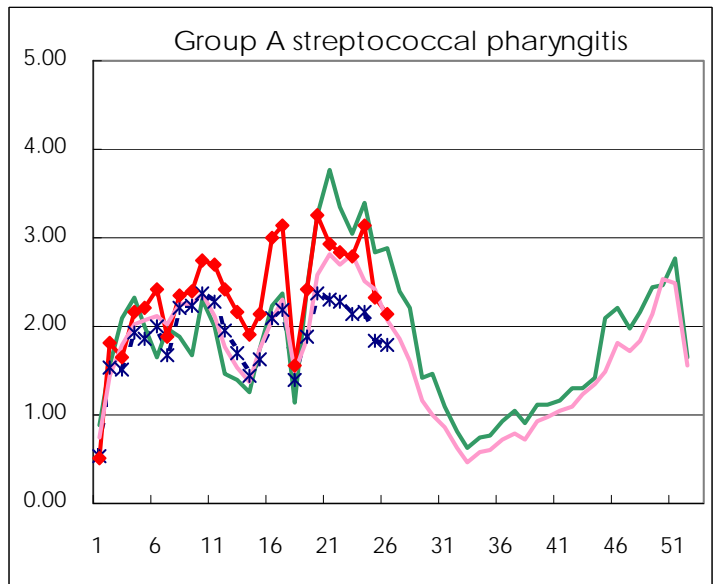
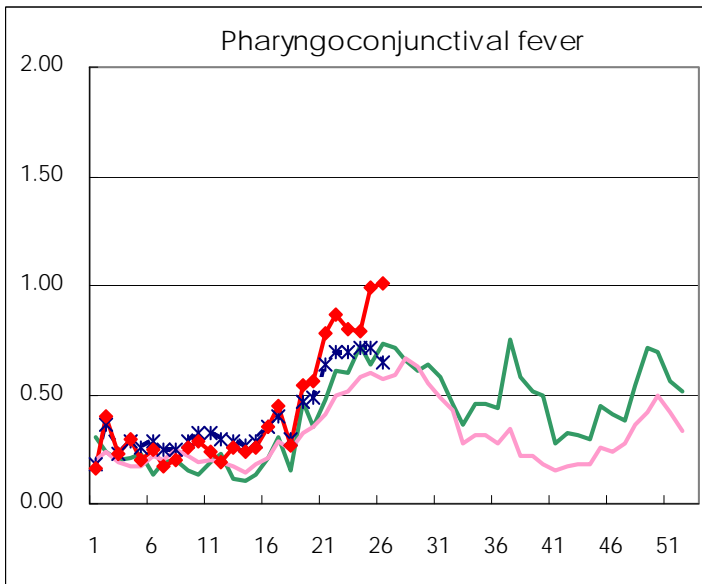
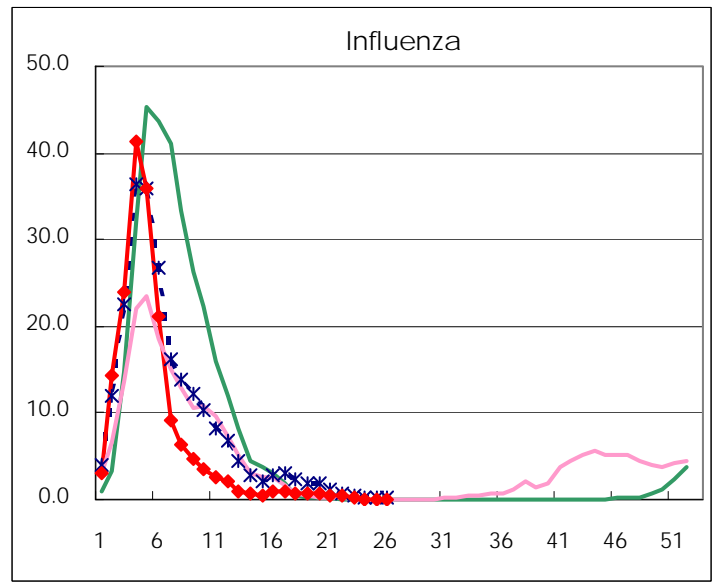
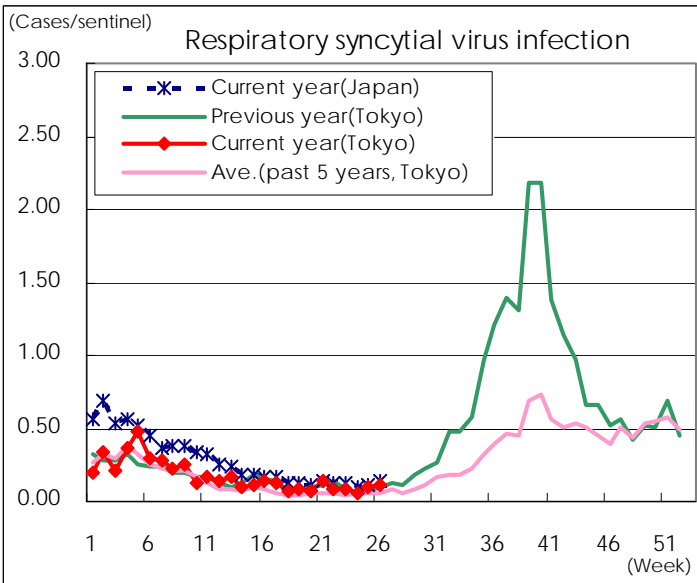
※ Designated infectious disease

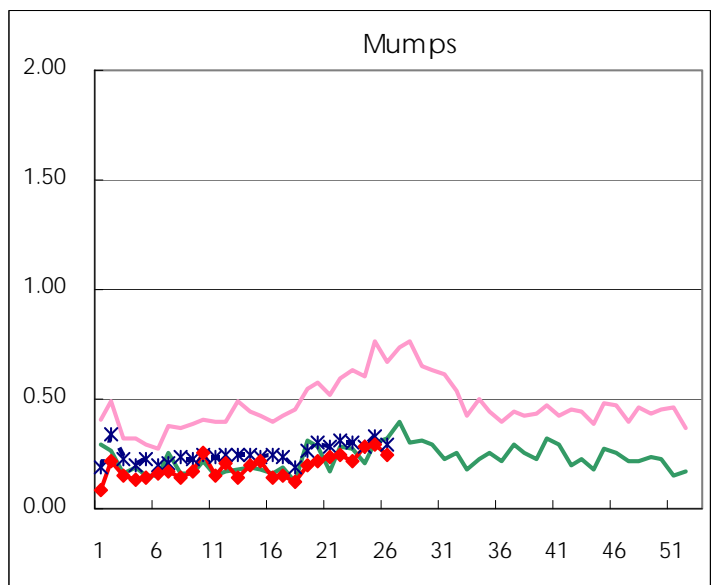
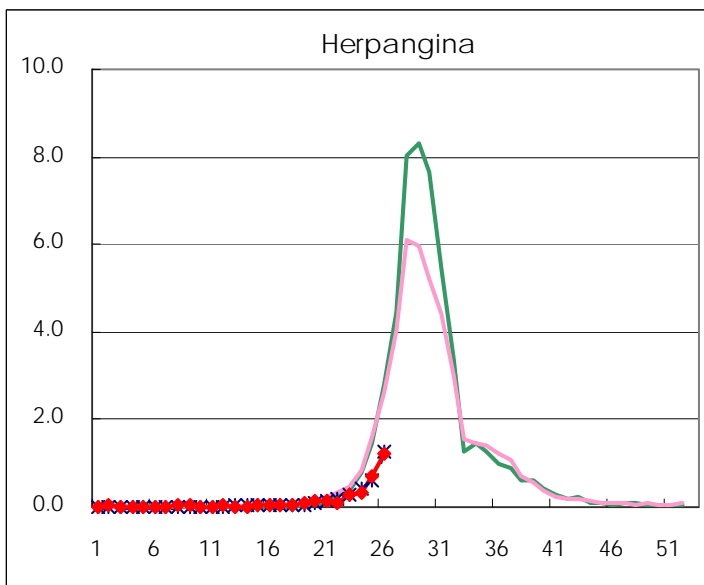
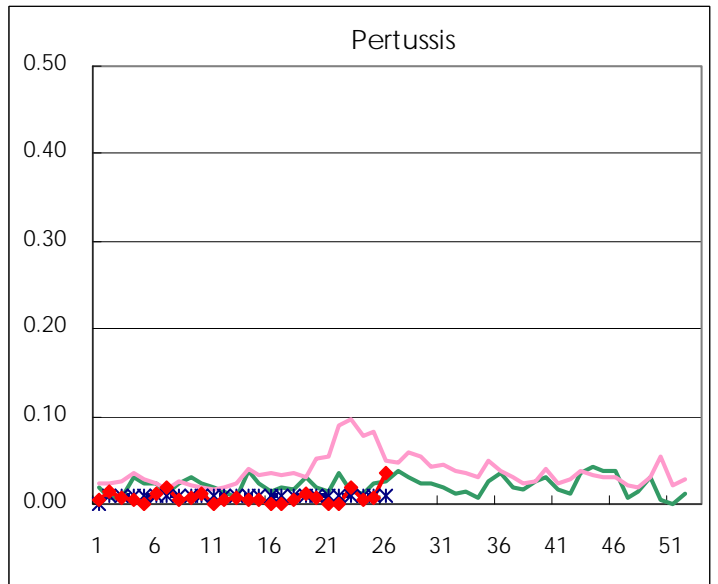
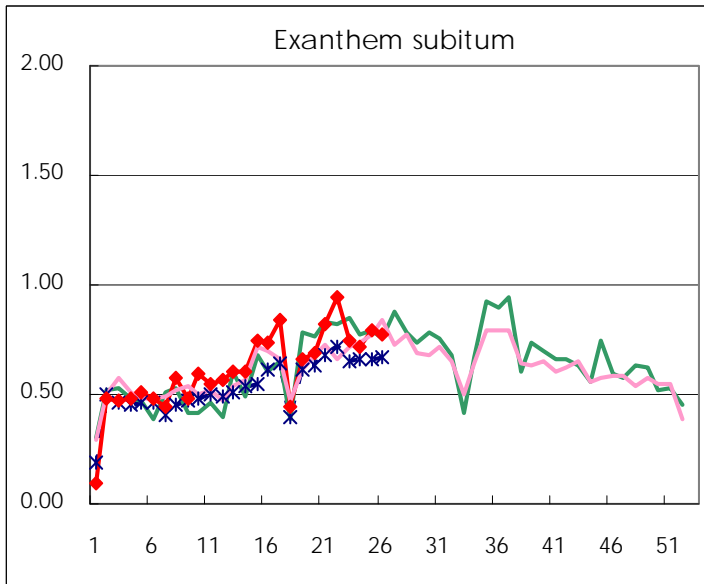
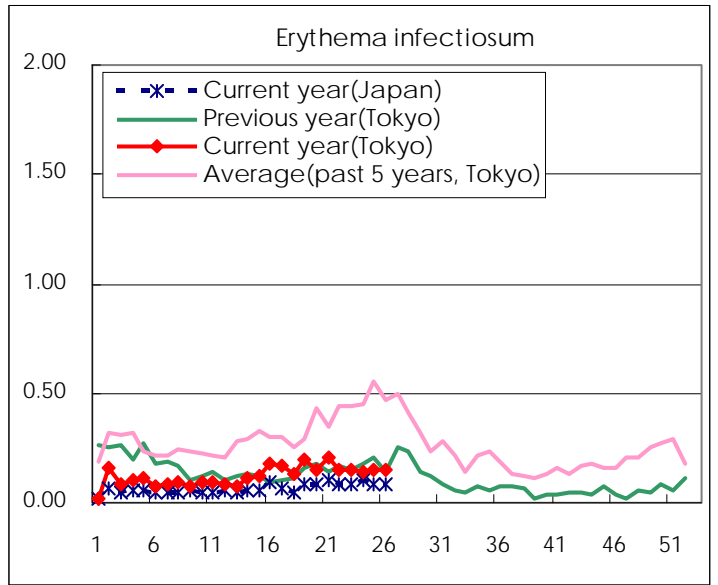
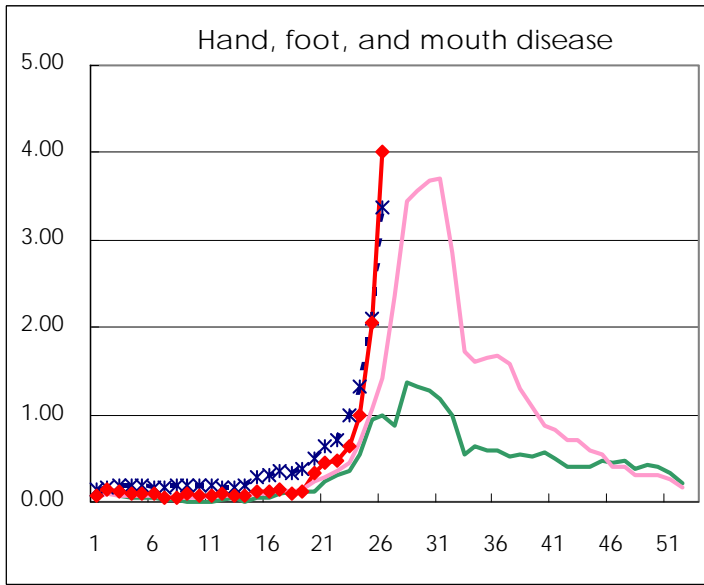
Number of patients with the diseases to be reported
by the designated clinics and hospitals

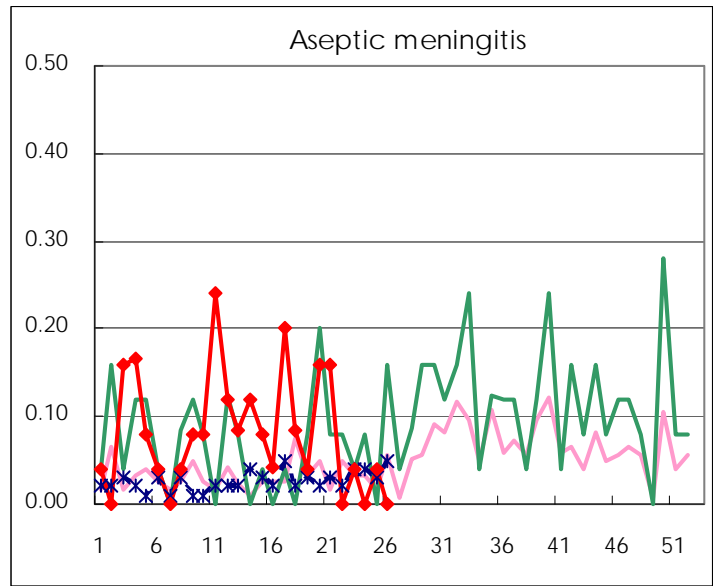
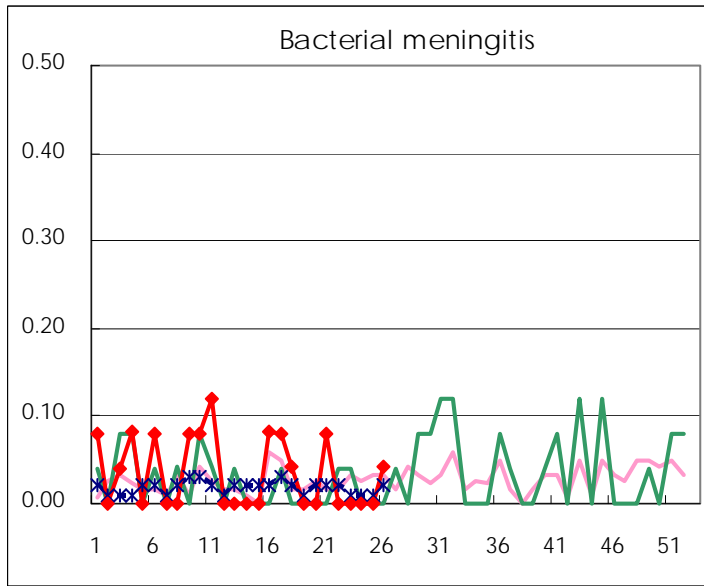
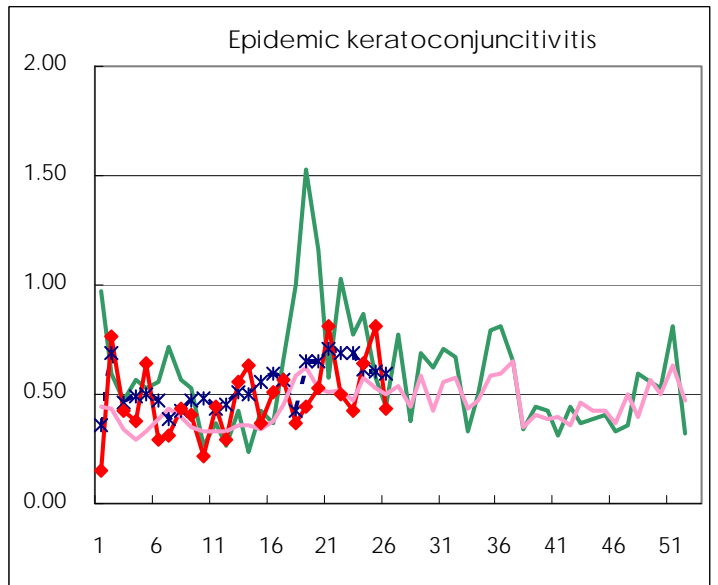
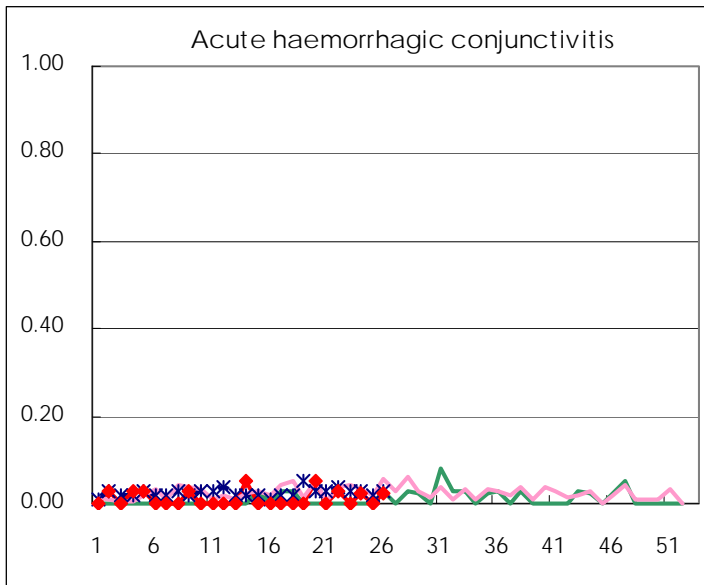
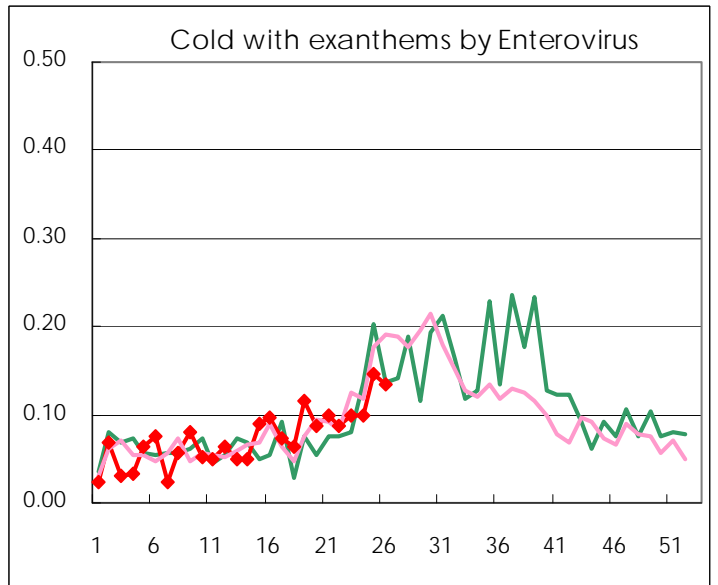
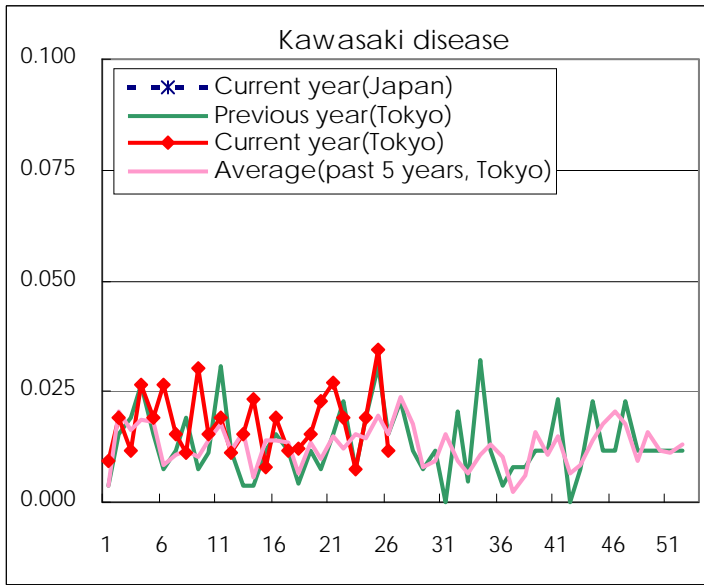
Diseases	Tokyo				
	23rd	24th	25th	26th	/sentinel
Respiratory syncytial virus infection	22	14	24	31	0.12
Pharyngoconjunctival fever	209	208	258	263	1.01
Group A streptococcal pharyngitis	730	822	607	556	2.13
Infectious gastroenteritis	1,654	1,520	1,240	1,111	4.26
Chickenpox	330	262	297	312	1.20
Hand, foot, and mouth disease	168	260	536	1,044	4.00
Erythema infectiosum	40	37	39	39	0.15
Exanthem subitum	196	187	206	201	0.77
Pertussis	5	1	2	9	0.03
Herpangina	69	80	183	317	1.21
Mumps	56	73	76	65	0.25
Kawasaki disease	2	5	9	3	0.01
Cold with exanthems by Enterovirus	26	26	38	35	0.13
Influenza	75	35	28	43	0.10
Acute hemorrhagic conjunctivitis		1		1	0.03
Epidemic keratoconjunctivitis	16	25	31	17	0.44
Bacterial meningitis				1	0.04
Aseptic meningitis	1		1		
Mycoplasma pneumonia	15	14	13	14	0.58
Chlamydial pneumonia (excluding psittacosis)		1	2		
Influenza-Associated Hospitalizations		2			

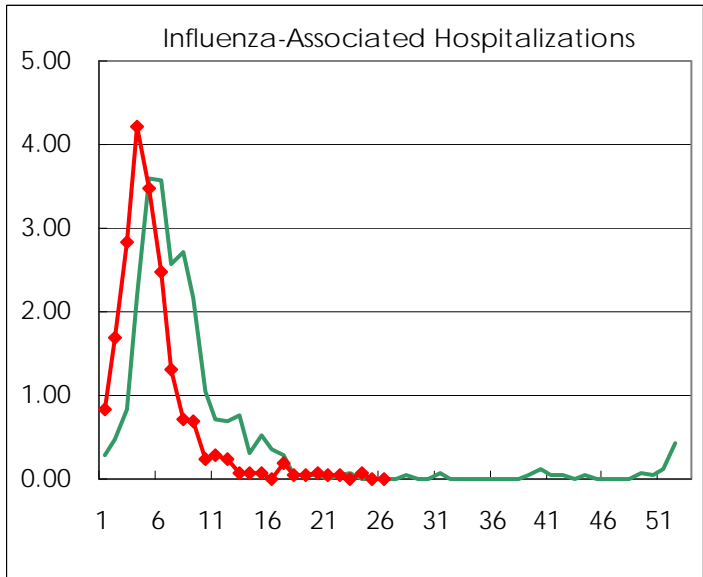
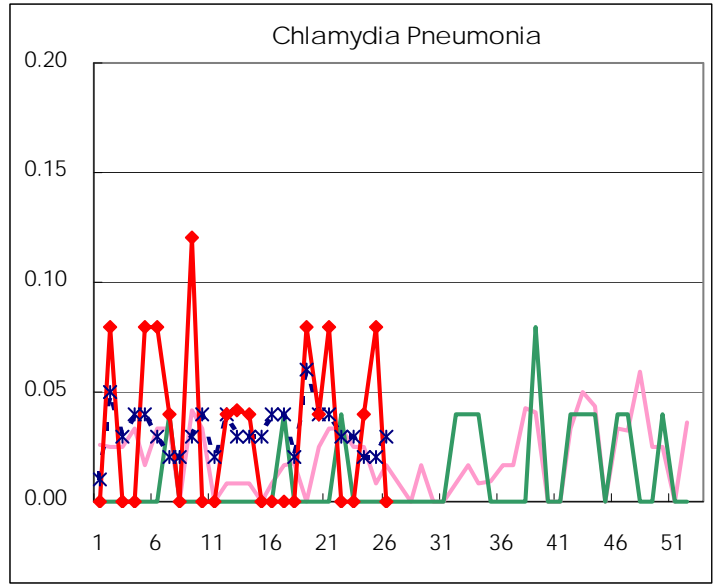
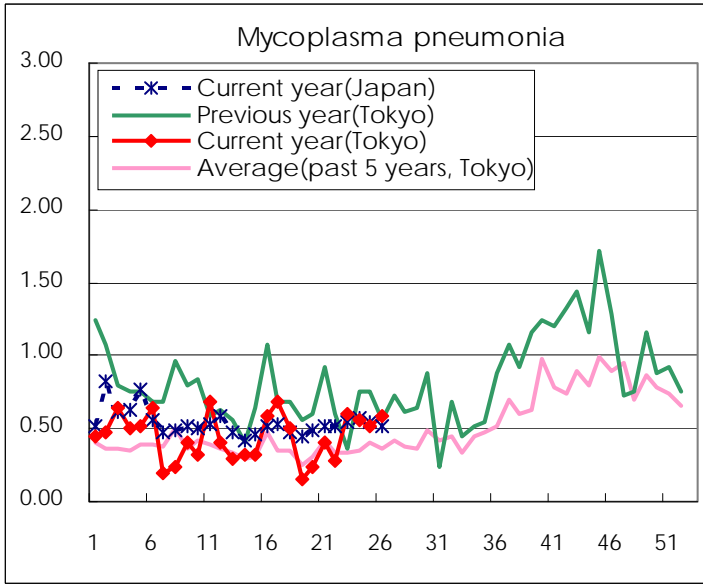
(Blank means 0.)

Disease Trend Graph (weekly reported cases per sentinel in comparison)









Number of sentinel facilities for weekly reporting		
Types of sentinels	Number of sentinels	Sentinels having reported
Pediatric	264	261
Influenza	419	414
Ophthalmic	39	39
Specially-designated	25	24

Tokyo Metropolitan Government
Infectious Disease Surveillance Center