
INFECTIOUS DISEASES WEEKLY REPORT

TOKYO IDWR

Tokyo Metropolitan Infectious Disease Surveillance Center

18 July 2013 / Number 28

Surveillance System in Tokyo, Japan

The infectious diseases which all physicians must report

All physicians must report to health centers the incidence of the diseases which are shown at page one. Health centers electronically report the individual cases to Tokyo Metropolitan Infectious Disease Surveillance Center.

The infectious diseases required to be reported by the sentinels

The numbers of patients who visit the sentinel clinics or hospitals during a week are reported to health centers in Tokyo. And they electronically report the numbers to Tokyo Metropolitan Infectious Disease Surveillance Center. We have about 500 sentinel clinics and hospitals in Tokyo.

1st Week is early January and 52nd Week is end of December.

Tokyo Metropolitan Institute of Public Health

TEL:81-3-3363-3213 FAX:81-3-5332-7365

e-mail:idsc@tokyo-eiken.go.jp

URL:idsc.tokyo-eiken.go.jp/

Number of patients with the diseases which all physicians must report

Category	Diseases	Tokyo				Japan		
		25th	26th	27th	28th	Cum 2013	28th	Cum 2013
I	Ebola hemorrhagic fever							
	Crimean-Congo hemorrhagic fever							
	Smallpox							
	South American hemorrhagic fever							
	Plague							
	Marburg disease							
	Lassa fever							
II	Acute poliomyelitis							
	Tuberculosis	109	114	93	75	2,139	383	13,726
	Diphtheria							
	Severe Acute Respiratory Syndrome(SARS)							
	Avian influenza H5N1							
※	Avian influenza H7N9							
III	Cholera							1
	Shigellosis	1				15	4	75
	Enterohemorrhagic Escherichia coli infection	9	9	15	11	95	139	1,039
	Typhoid fever					13		30
	Paratyphoid fever					14		31
IV	Hepatitis E	2				21	1	69
	West Nile fever							
	Hepatitis A	1				13	1	86
	Echinococcosis							10
	Yellow fever							
	Psittacosis					2		6
	Omsk hemorrhagic fever							
	Relapsing fever							
	Kyasanur forest disease							
	Q fever		1			3		3
	Rabies							
	Coccidioidomycosis					3		3
	Monkeypox							
	Severe Fever with Thrombocytopenia Syndrome							23
	Hemorrhagic fever with renal syndrome							
	Western equine encephalitis							
	Tick-borne encephalitis							
	Anthrax							
	Chikungunya fever				1	3	1	8
	Scrub typhus(Tsutsugamushi disease)			1		1	1	128
	Dengue fever	3		3	2	26	4	98
	Eastern equine encephalitis							
	Avian influenza (excluding H5N1 and H7N9)							
	Nipah virus infection							
	Japanese spotted fever						5	52
	Japanese encephalitis							
	Hantavirus pulmonary syndrome							
	Herpes B virus infection							
	Glanders							
	Brucellosis							1
	Venezuelan equine encephalitis							
	Hendra virus infection							
Epidemic typhus								
Botulism								
Malaria					5		23	
Tularemia								
Lyme disease				1	1		4	
Lyssavirus infection(excluding rabies)								
Rift valley fever								
Melioidosis					1		2	
Legionellosis	1	4	3	4	39	40	457	
Leptospirosis				1	1	1	5	
Rocky mountain spotted fever								

Category	Diseases	Tokyo					Japan	
		25th	26th	27th	28th	Cum 2013	28th	Cum 2013
V	Amebiasis	8	3	1	2	109	14	542
	Viral hepatitis(excluding hepatitis A and E)			2	1	38	5	141
	Acute encephalitis(excluding JE and WNE)		3		1	29	5	222
	Cryptosporidiosis					1		2
	Creutzfeldt-Jakob disease		2			9	4	102
	Severe invasive streptococcal infections(TSLS)	2		2	1	21	3	120
	Acquired immunodeficiency syndrome (AIDS)	13	8	11	6	254	17	817
	Giardiasis				1	13	3	38
	Invasive <i>Haemophilus influenzae</i> disease					5	4	51
	Invasive meningococcal disease		1			6		11
	Invasive pneumococcal disease	5	2		2	49	10	451
	Meningococcal meningitis							2
	Congenital rubella syndrome	1				3		8
	Syphilis	7	7	5	7	204	15	594
	Tetanus					3	1	66
	Vancomycin-resistant <i>S. aureus</i> infection							
	Vancomycin-resistant Enterococcus infection	1				6	1	33
	Rubella	121	92	92	93	3,093	290	12,832
Measles	2	1			49	3	160	

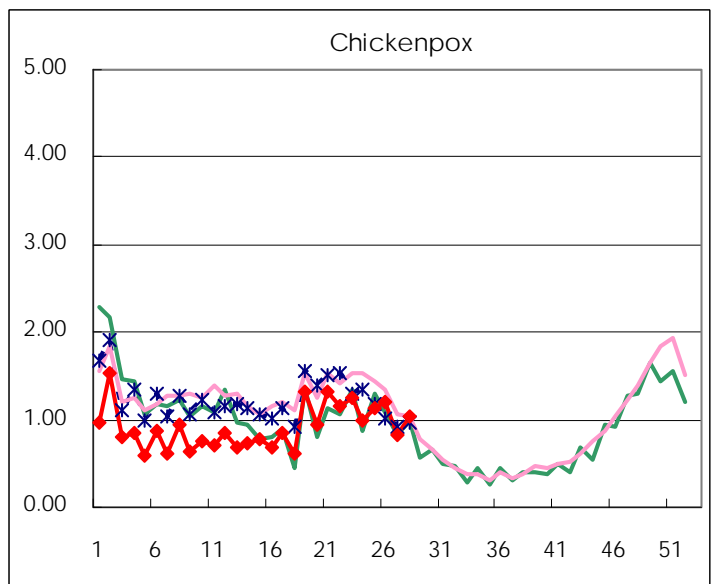
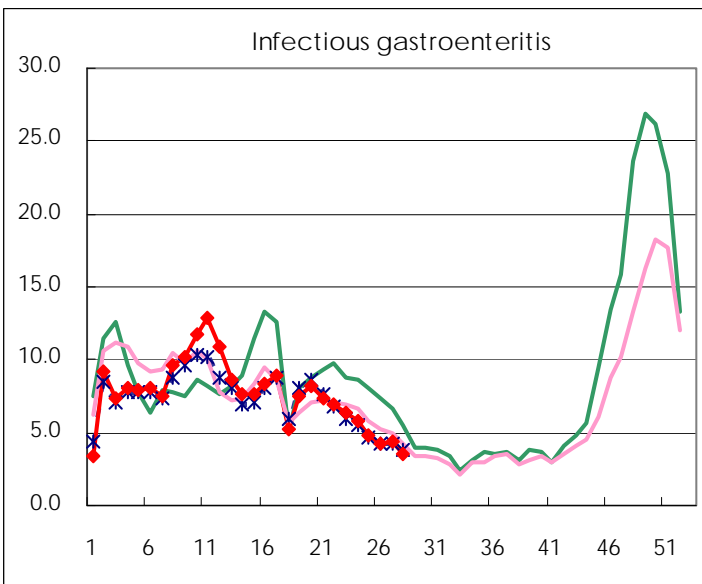
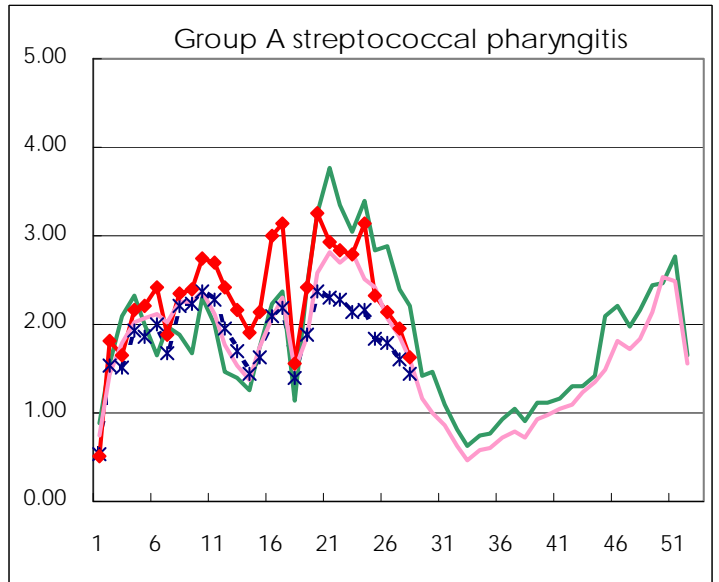
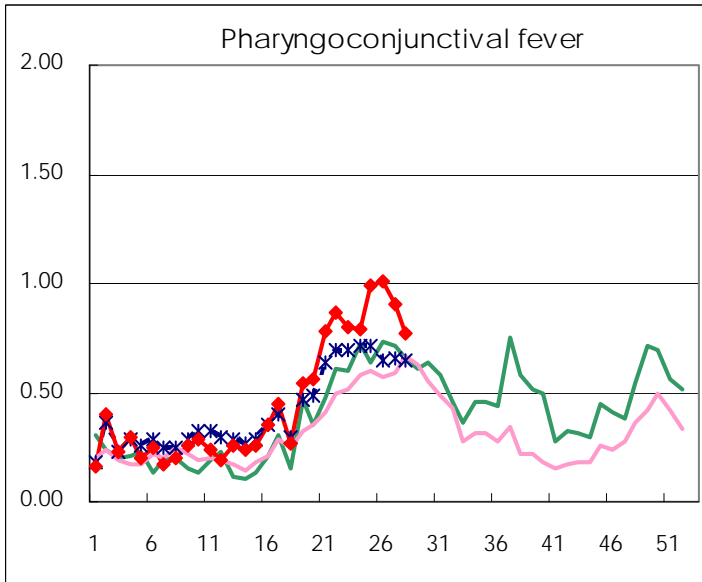
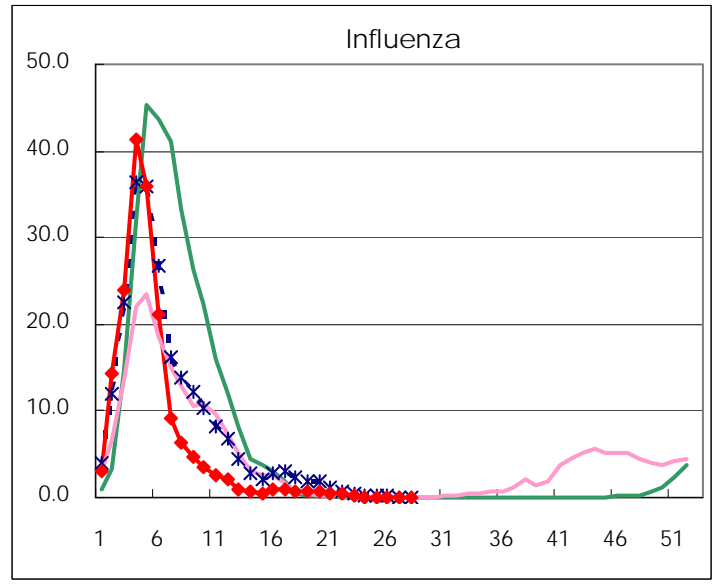
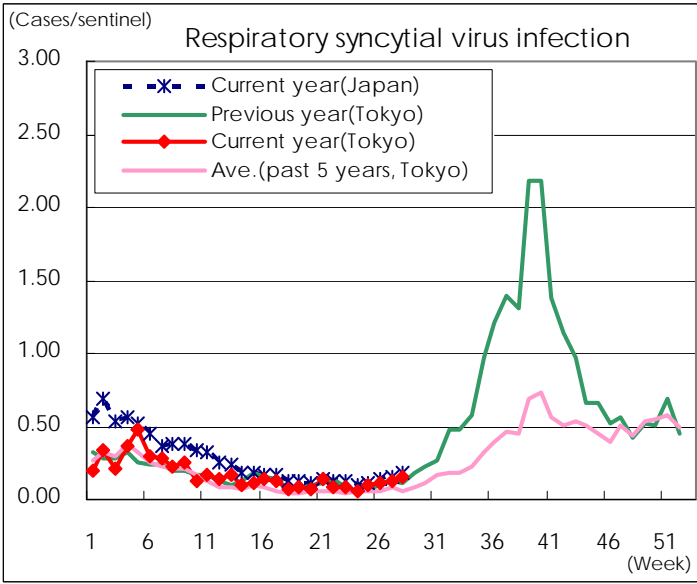
※ Designated infectious disease

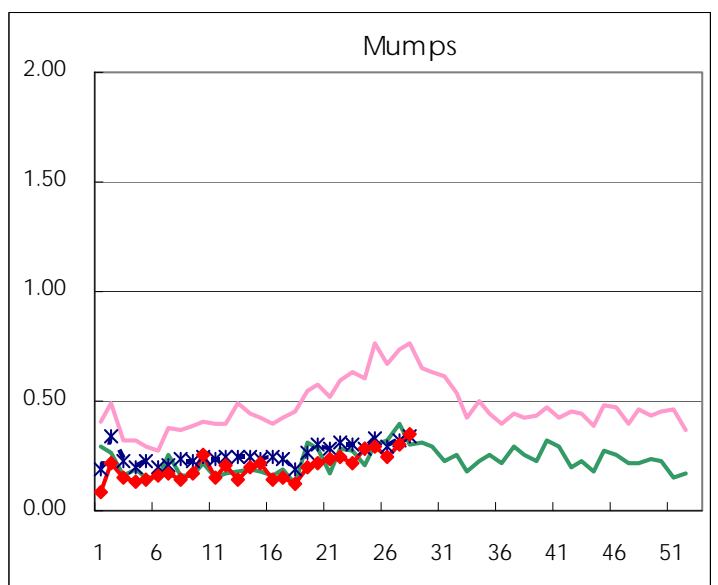
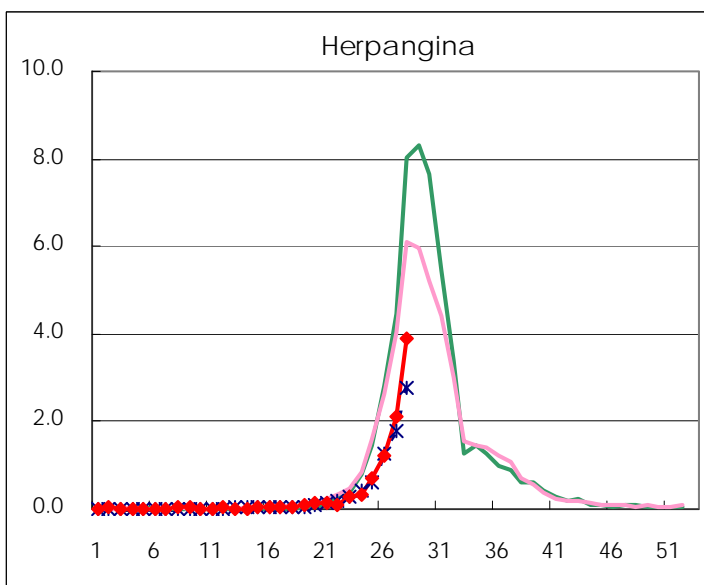
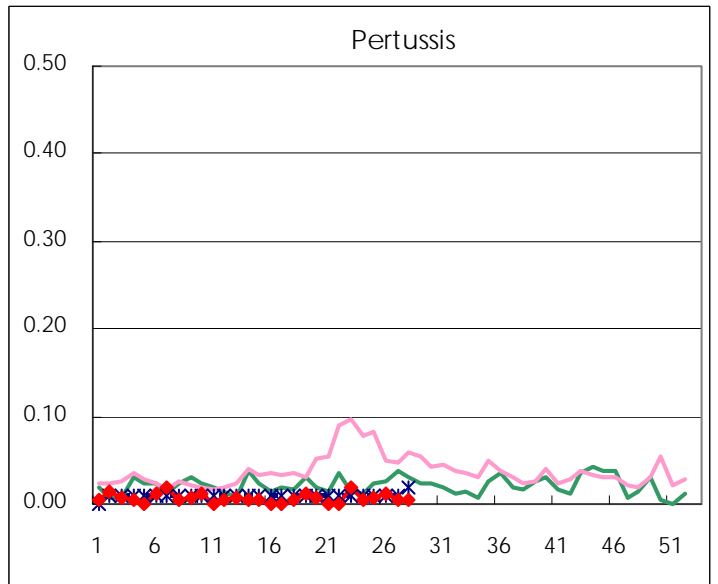
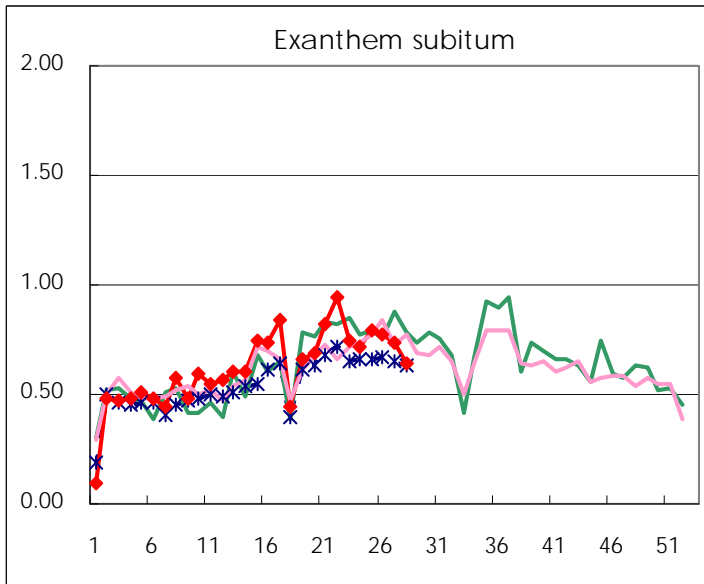
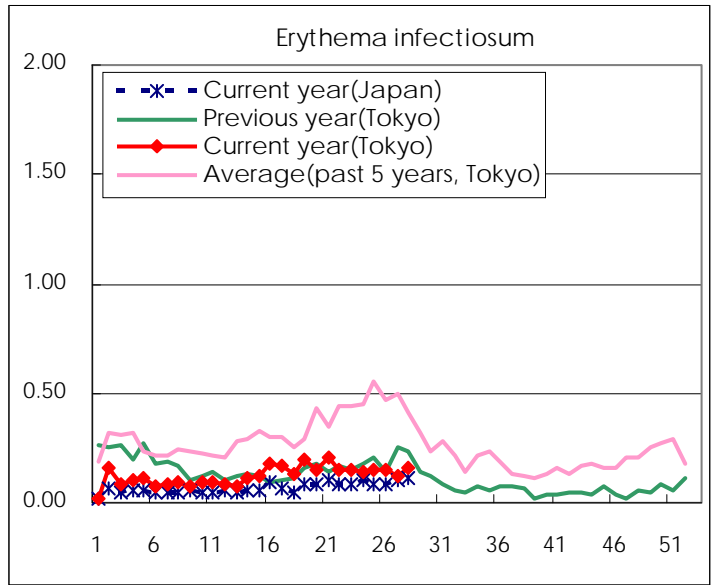
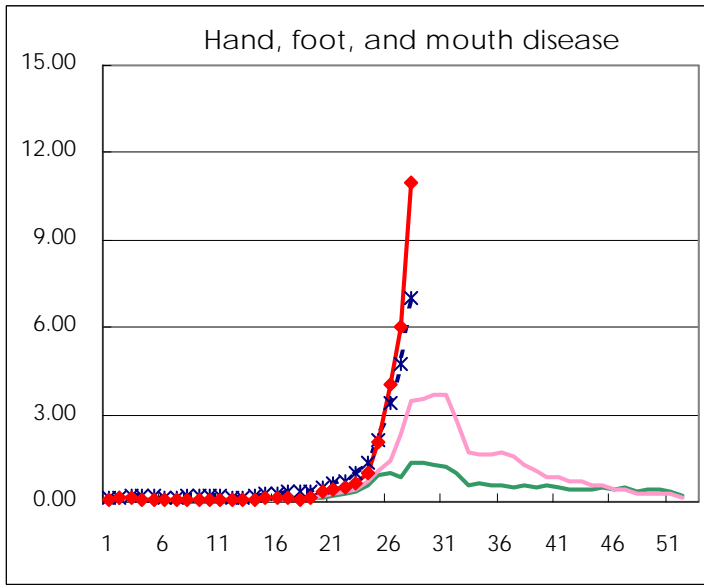
Number of patients with the diseases to be reported
by the designated clinics and hospitals

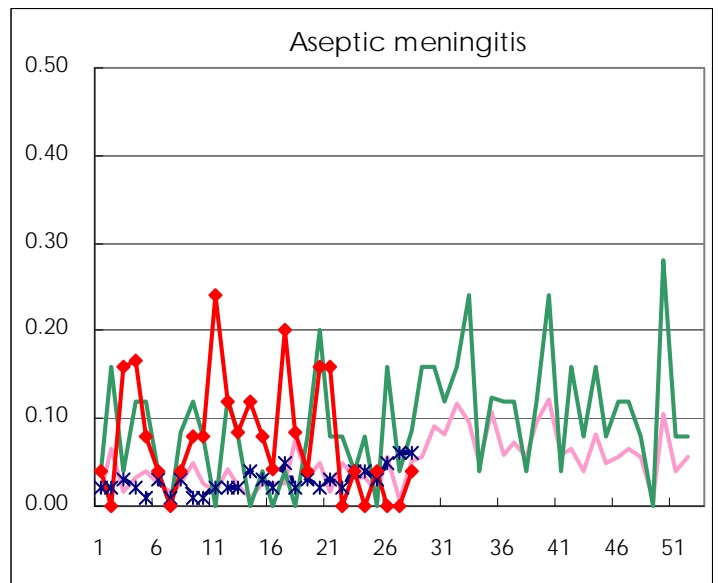
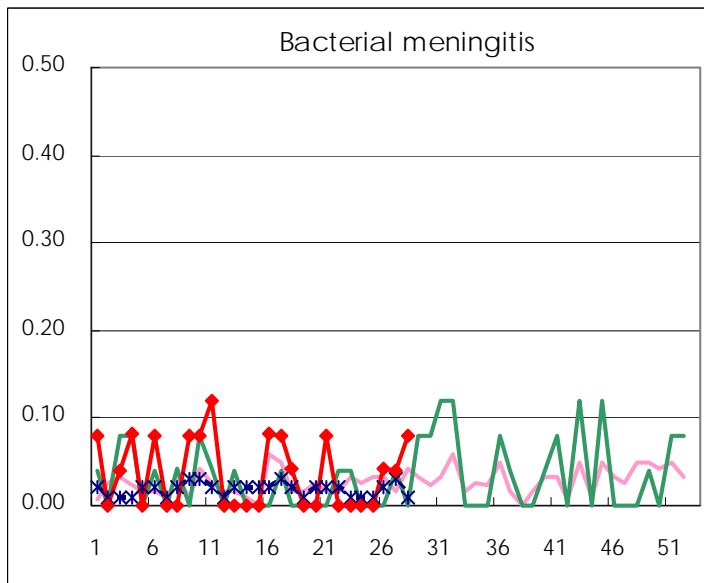
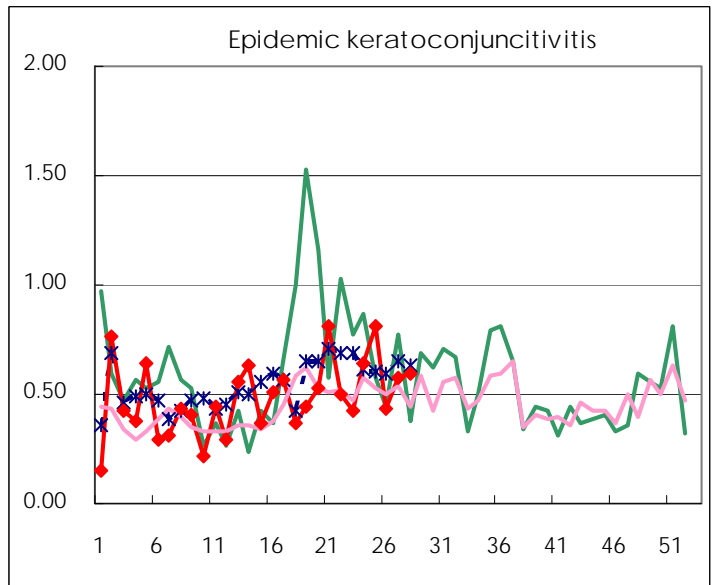
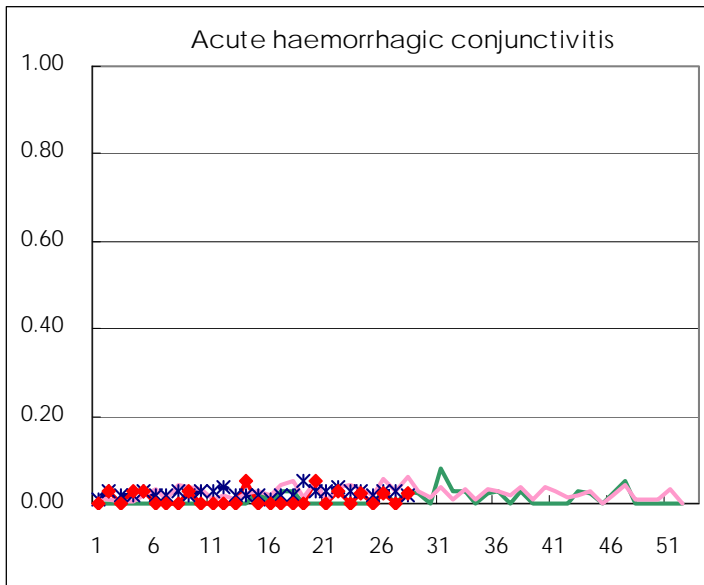
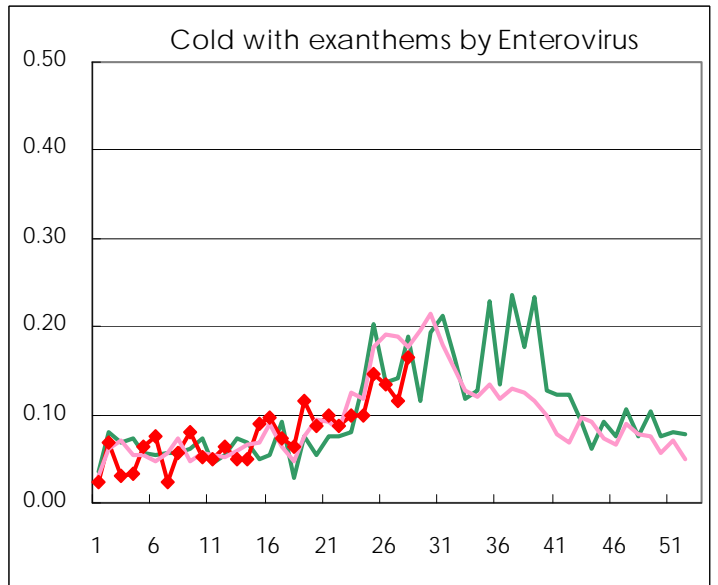
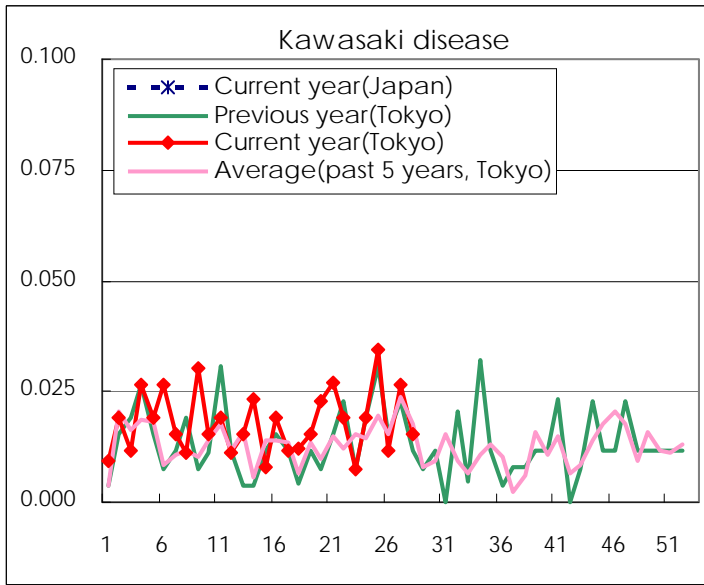
Diseases	Tokyo				
	25th	26th	27th	28th	/sentinel
Respiratory syncytial virus infection	24	31	33	39	0.15
Pharyngoconjunctival fever	258	263	236	200	0.77
Group A streptococcal pharyngitis	607	556	512	422	1.63
Infectious gastroenteritis	1,240	1,111	1,161	930	3.59
Chickenpox	297	312	219	270	1.04
Hand, foot, and mouth disease	536	1,044	1,575	2,841	10.97
Erythema infectiosum	39	39	32	42	0.16
Exanthem subitum	206	201	193	165	0.64
Pertussis	2	3	1	1	0.00
Herpangina	183	323	548	1,007	3.89
Mumps	76	65	79	90	0.35
Kawasaki disease	9	3	7	4	0.02
Cold with exanthems by Enterovirus	38	35	30	43	0.17
Influenza	28	43	13	8	0.02
Acute hemorrhagic conjunctivitis		1		1	0.03
Epidemic keratoconjunctivitis	31	17	22	23	0.59
Bacterial meningitis		1	1	2	0.08
Aseptic meningitis	1			1	0.04
Mycoplasma pneumonia	13	14	9	9	0.36
Chlamydial pneumonia (excluding psittacosis)	2		2	1	0.04
Influenza-Associated Hospitalizations			1	1	0.04

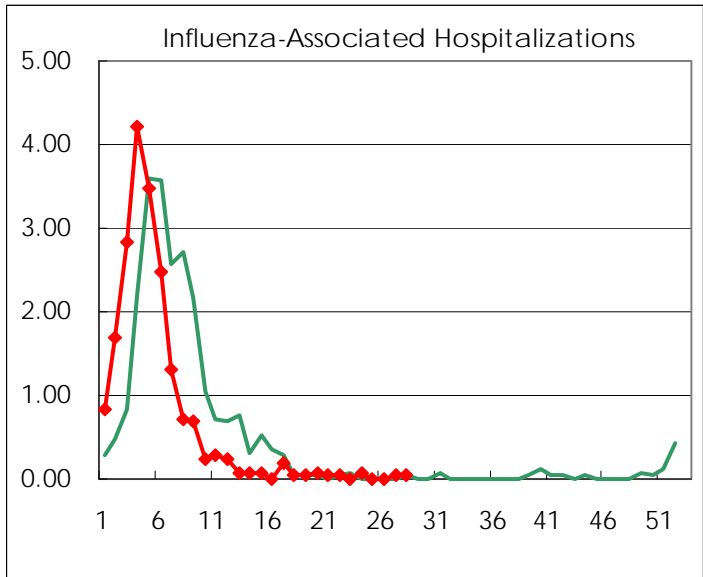
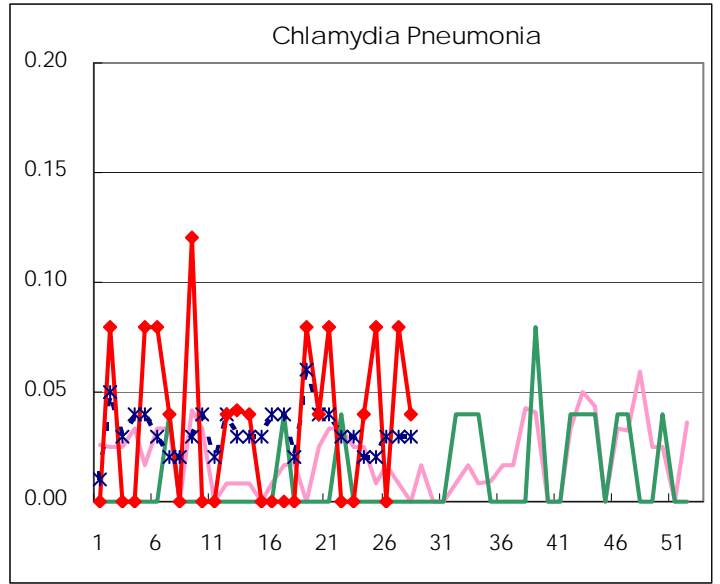
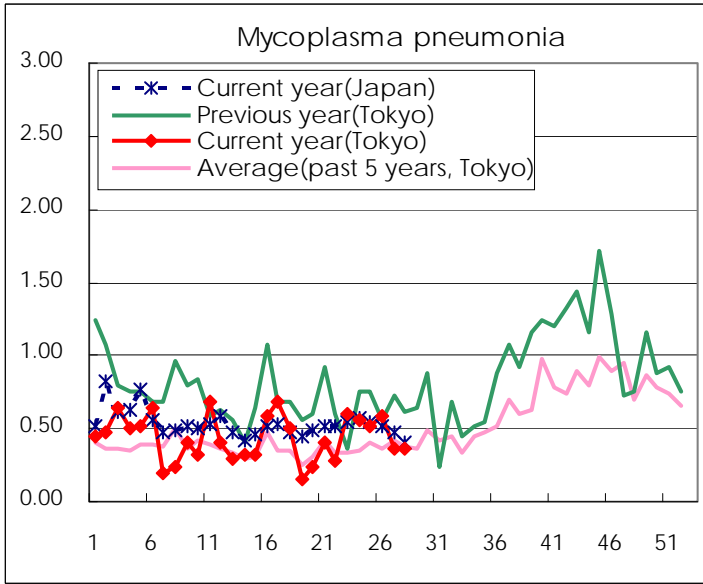
(Blank means 0.)

Disease Trend Graph (weekly reported cases per sentinel in comparison)









Number of sentinel facilities for weekly reporting		
Types of sentinels	Number of sentinels	Sentinels having reported
Pediatric	264	259
Influenza	419	410
Ophthalmic	39	39
Specially-designated	25	25

Tokyo Metropolitan Government
Infectious Disease Surveillance Center