
INFECTIOUS DISEASES WEEKLY REPORT

TOKYO IDWR

Tokyo Metropolitan Infectious Disease Surveillance Center

25 July 2013 / Number 29

Surveillance System in Tokyo, Japan

The infectious diseases which all physicians must report

All physicians must report to health centers the incidence of the diseases which are shown at page one. Health centers electronically report the individual cases to Tokyo Metropolitan Infectious Disease Surveillance Center.

The infectious diseases required to be reported by the sentinels

The numbers of patients who visit the sentinel clinics or hospitals during a week are reported to health centers in Tokyo. And they electronically report the numbers to Tokyo Metropolitan Infectious Disease Surveillance Center. We have about 500 sentinel clinics and hospitals in Tokyo.

1st Week is early January and 52nd Week is end of December.

Tokyo Metropolitan Institute of Public Health

TEL:81-3-3363-3213 FAX:81-3-5332-7365

e-mail:idsc@tokyo-eiken.go.jp

URL:idsc.tokyo-eiken.go.jp/

Number of patients with the diseases which all physicians must report

Category	Diseases	Tokyo				Japan		
		26th	27th	28th	29th	Cum 2013	29th	Cum 2013
I	Ebola hemorrhagic fever							
	Crimean-Congo hemorrhagic fever							
	Smallpox							
	South American hemorrhagic fever							
	Plague							
	Marburg disease							
	Lassa fever							
II	Acute poliomyelitis						1	1
	Tuberculosis	114	93	81	69	2,214	332	14,228
	Diphtheria							
	Severe Acute Respiratory Syndrome(SARS)							
	Avian influenza H5N1							
※	Avian influenza H7N9							
III	Cholera							1
	Shigellosis					15	3	78
	Enterohemorrhagic Escherichia coli infection	9	15	13	16	113	135	1,206
	Typhoid fever				1	14	1	33
	Paratyphoid fever					14		31
IV	Hepatitis E					21	2	74
	West Nile fever							
	Hepatitis A				1	14	2	89
	Echinococcosis							9
	Yellow fever							
	Psittacosis					2		6
	Omsk hemorrhagic fever							
	Relapsing fever							
	Kyasanur forest disease							
	Q fever	1				3		3
	Rabies							
	Coccidioidomycosis					3		3
	Monkeypox							
	Severe Fever with Thrombocytopenia Syndrome						2	24
	Hemorrhagic fever with renal syndrome							
	Western equine encephalitis							
	Tick-borne encephalitis							
	Anthrax							
	Chikungunya fever			1		3		8
	Scrub typhus(Tsutsugamushi disease)		1			1	4	136
	Dengue fever		3	2	1	27	5	103
	Eastern equine encephalitis							
	Avian influenza (excluding H5N1 and H7N9)							
	Nipah virus infection							
	Japanese spotted fever							54
	Japanese encephalitis							
	Hantavirus pulmonary syndrome							
	Herpes B virus infection							
	Glanders							
	Brucellosis							1
	Venezuelan equine encephalitis							
	Hendra virus infection							
Epidemic typhus								
Botulism								
Malaria					5	1	24	
Tularemia								
Lyme disease			1		1		4	
Lyssavirus infection(excluding rabies)								
Rift valley fever								
Melioidosis					1		2	
Legionellosis	4	3	4		39	40	509	
Leptospirosis			1		1		5	
Rocky mountain spotted fever								

Category	Diseases	Tokyo					Japan	
		26th	27th	28th	29th	Cum 2013	29th	Cum 2013
V	Amebiasis	3	1	2	2	111	15	562
	Viral hepatitis(excluding hepatitis A and E)		2	1		38	2	148
	Acute encephalitis(excluding JE and WNE)	3		2	1	31	6	237
	Cryptosporidiosis					1		2
	Creutzfeldt-Jakob disease	2				9	4	111
	Severe invasive streptococcal infections(TSLS)		2	1	1	22	3	125
	Acquired immunodeficiency syndrome (AIDS)	8	11	6	10	264	19	844
	Giardiasis			1		13	2	40
	Invasive <i>Haemophilus influenzae</i> disease					5		51
	Invasive meningococcal disease	1				6		11
	Invasive pneumococcal disease	2		2	1	50	5	464
	Meningococcal meningitis							2
	Congenital rubella syndrome					3		8
	Syphilis	7	5	8	11	216	18	621
	Tetanus					3	2	68
	Vancomycin-resistant <i>S. aureus</i> infection							
	Vancomycin-resistant Enterococcus infection					6		33
	Rubella	92	93	94	49	3,144	184	13,110
Measles	1			1	50	2	165	

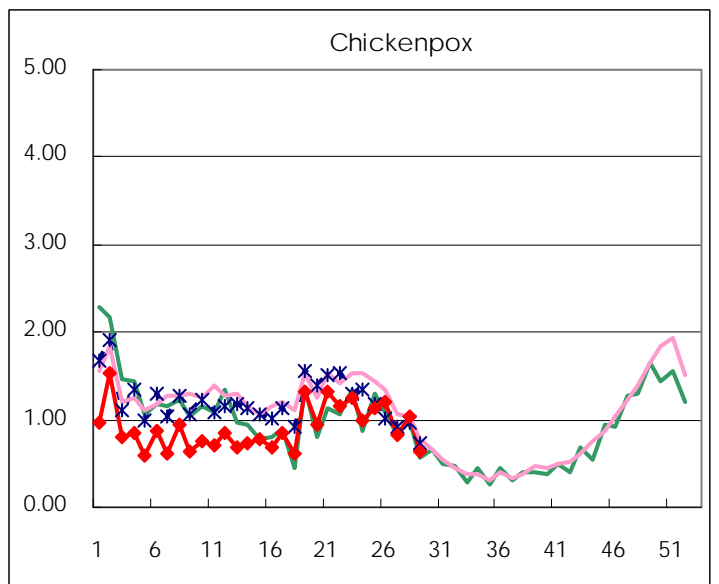
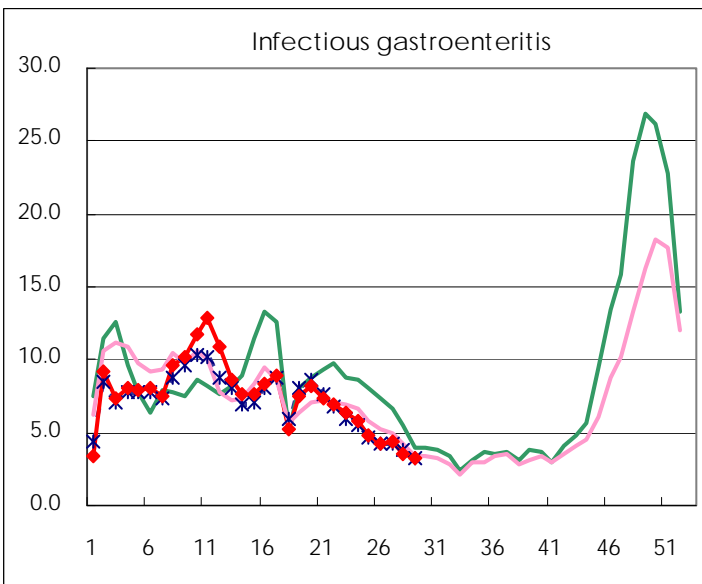
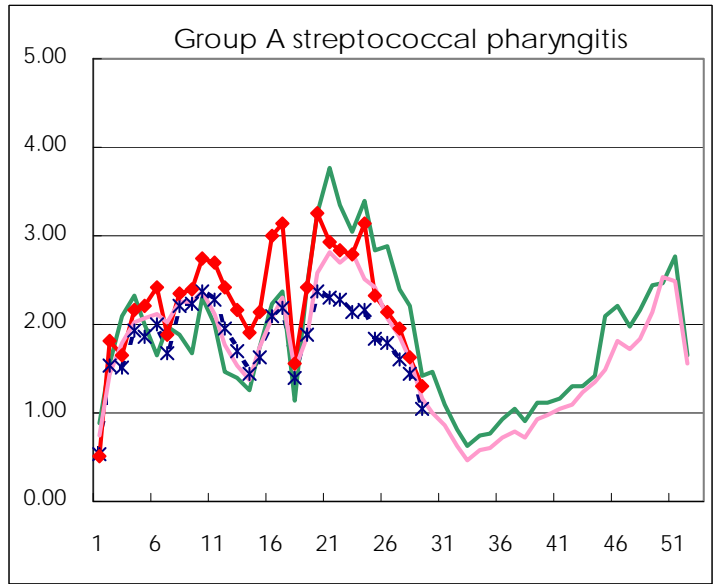
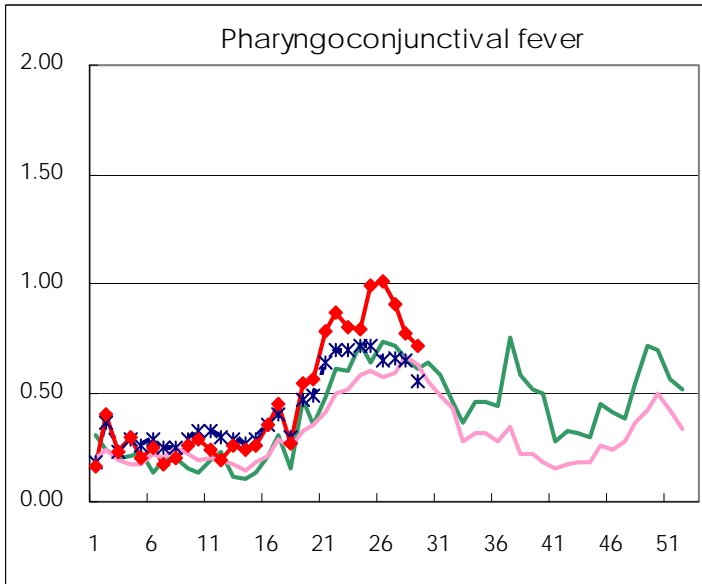
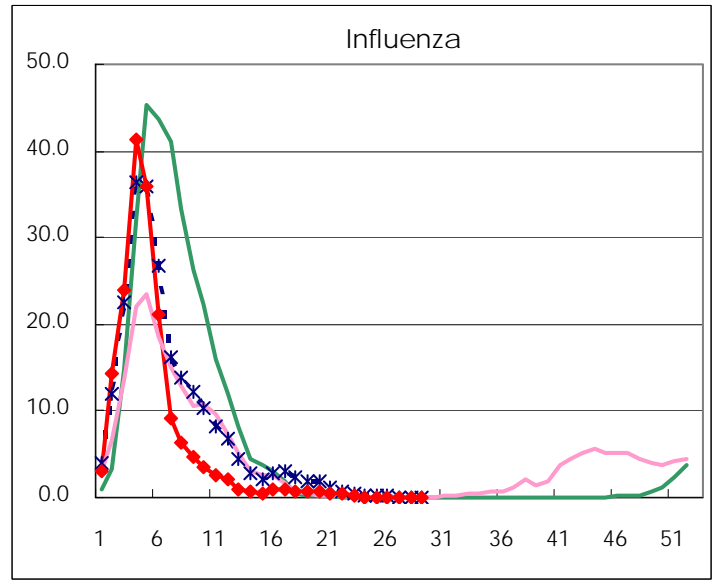
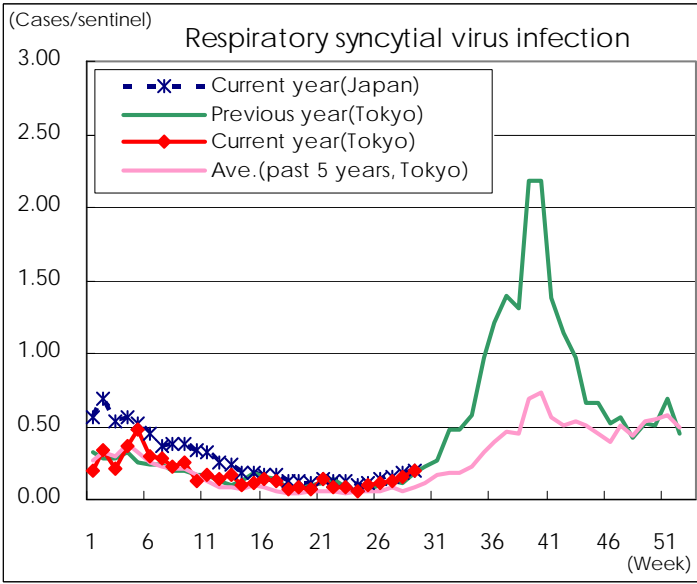
※ Designated infectious disease

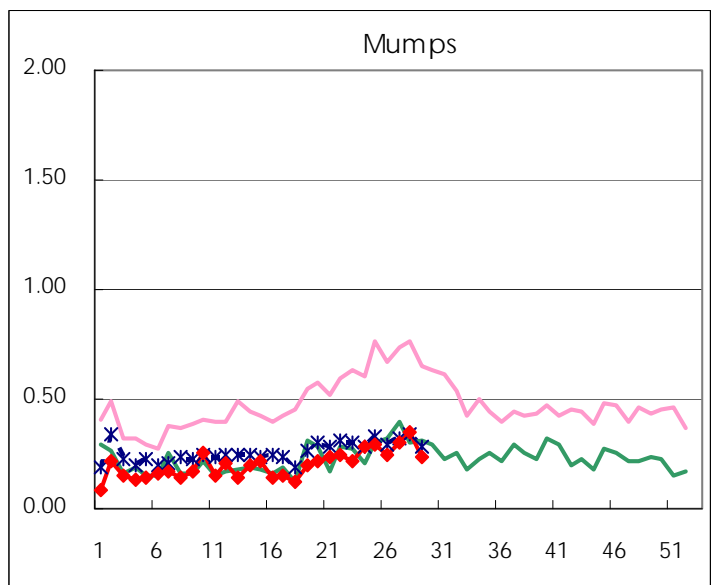
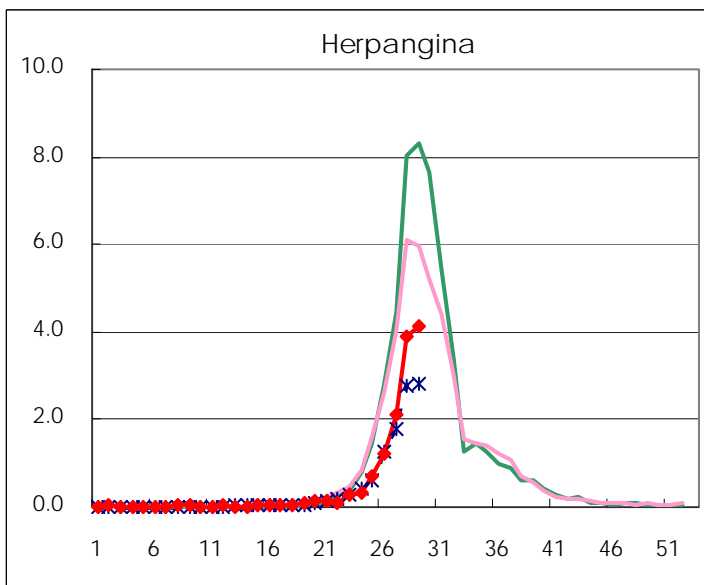
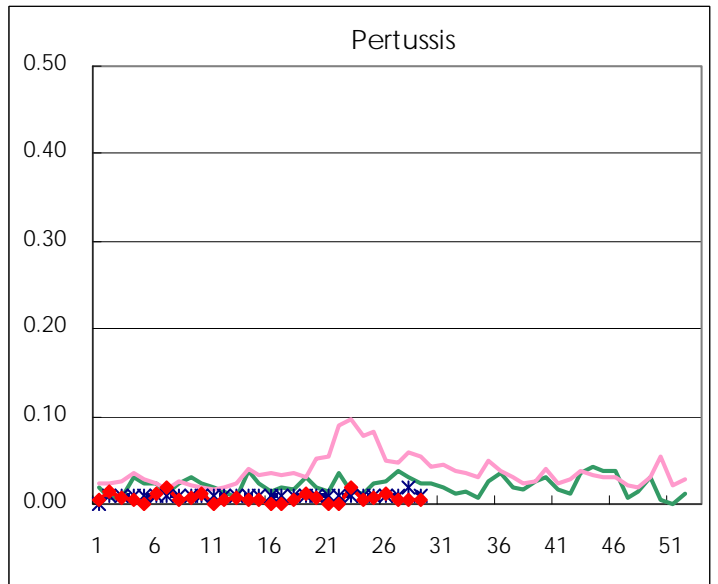
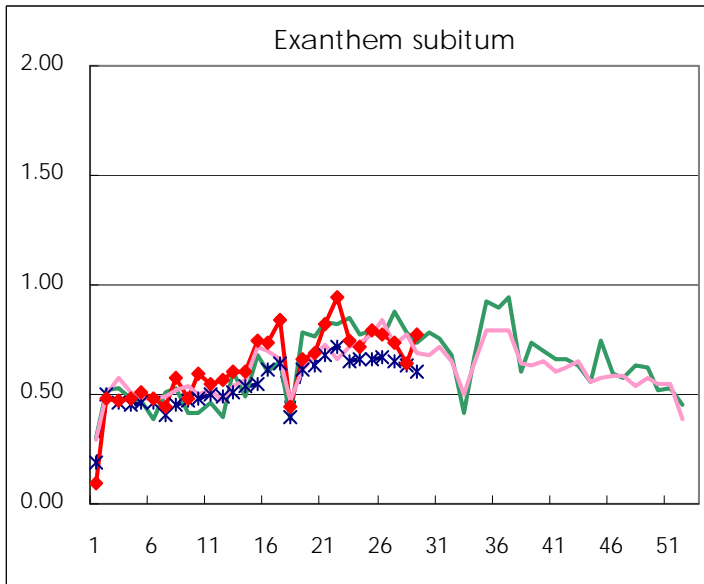
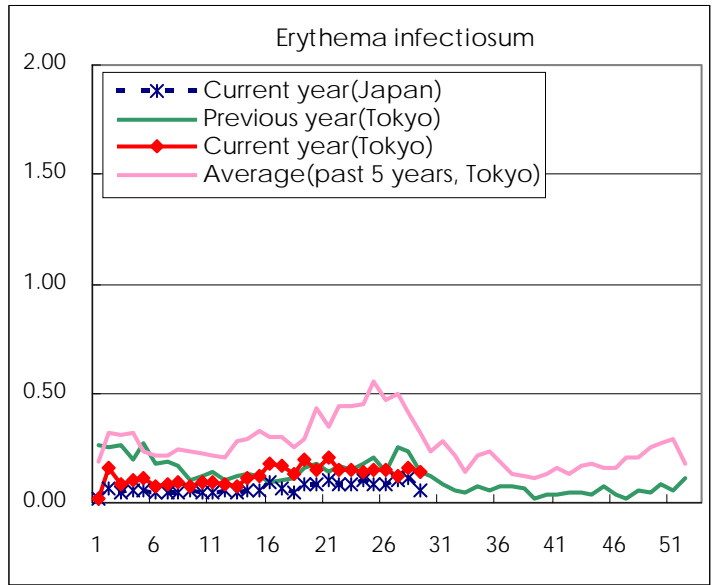
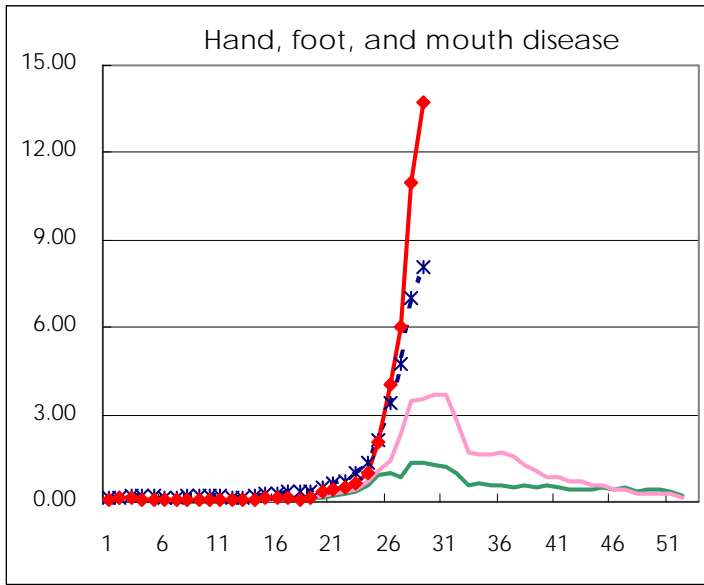
Number of patients with the diseases to be reported
by the designated clinics and hospitals

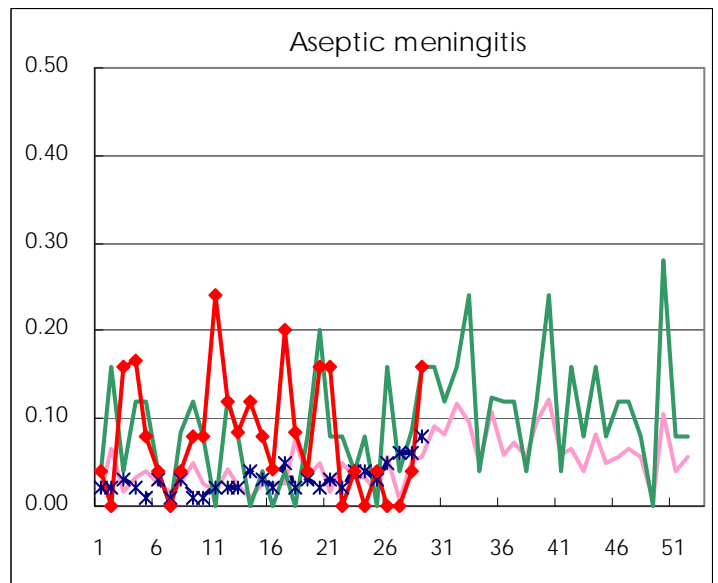
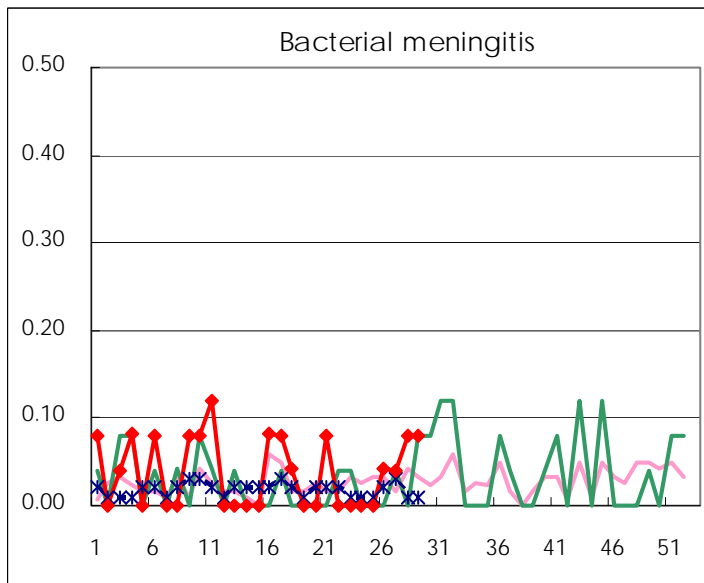
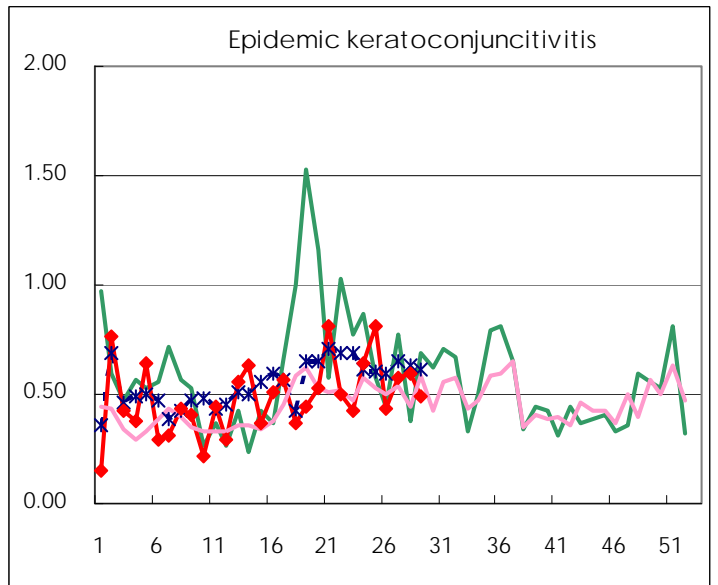
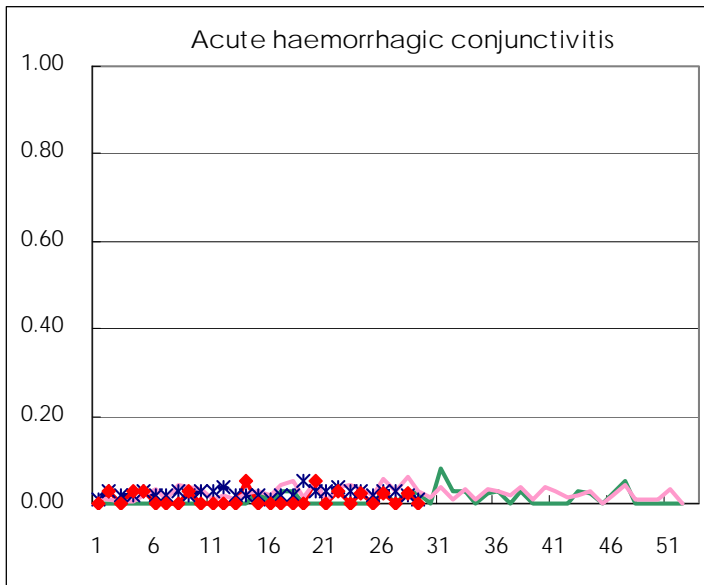
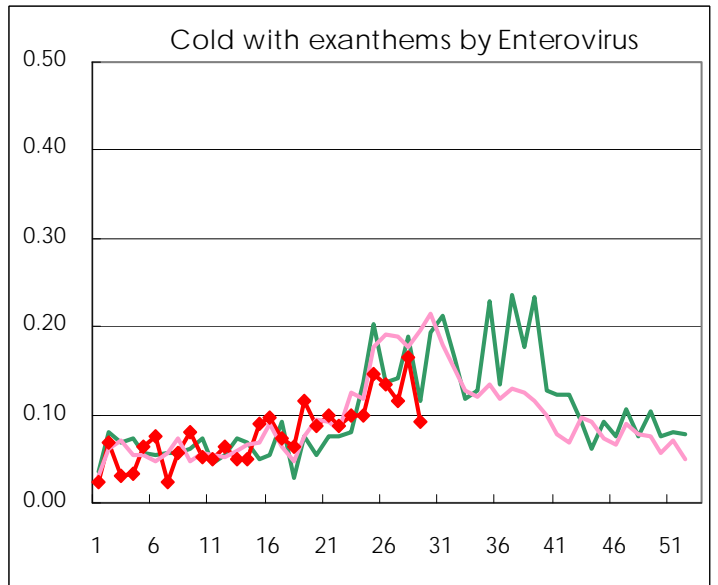
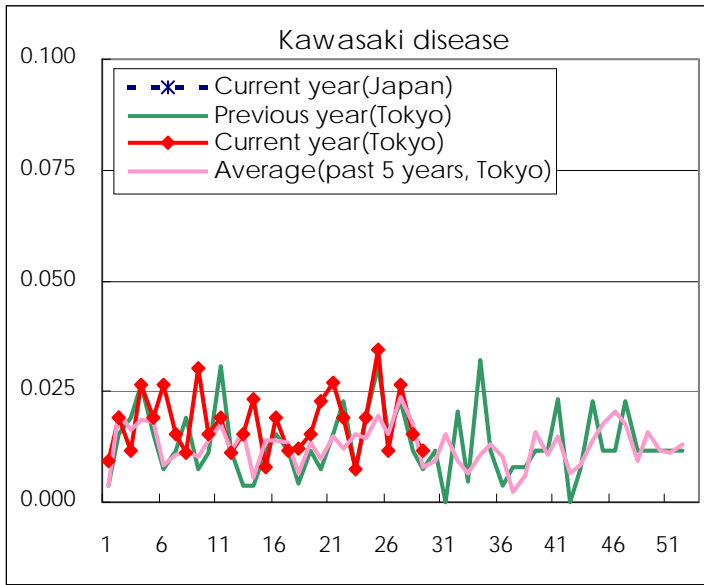
Diseases	Tokyo				
	26th	27th	28th	29th	/sentinel
Respiratory syncytial virus infection	31	33	39	53	0.20
Pharyngoconjunctival fever	263	236	200	188	0.72
Group A streptococcal pharyngitis	556	512	422	339	1.29
Infectious gastroenteritis	1,111	1,161	930	837	3.19
Chickenpox	312	219	269	164	0.63
Hand, foot, and mouth disease	1,044	1,575	2,842	3,593	13.71
Erythema infectiosum	39	32	42	38	0.15
Exanthem subitum	201	193	165	203	0.77
Pertussis	3	1	1	1	0.00
Herpangina	323	548	1,007	1,077	4.11
Mumps	65	79	90	63	0.24
Kawasaki disease	3	7	4	3	0.01
Cold with exanthems by Enterovirus	35	30	43	24	0.09
Influenza	43	13	8	11	0.03
Acute hemorrhagic conjunctivitis	1		1		
Epidemic keratoconjunctivitis	17	22	23	19	0.49
Bacterial meningitis	1	1	2	2	0.08
Aseptic meningitis			1	4	0.16
Mycoplasma pneumonia	14	9	9	8	0.32
Chlamydial pneumonia (excluding psittacosis)		2	1	2	0.08
Influenza-Associated Hospitalizations		1	1		

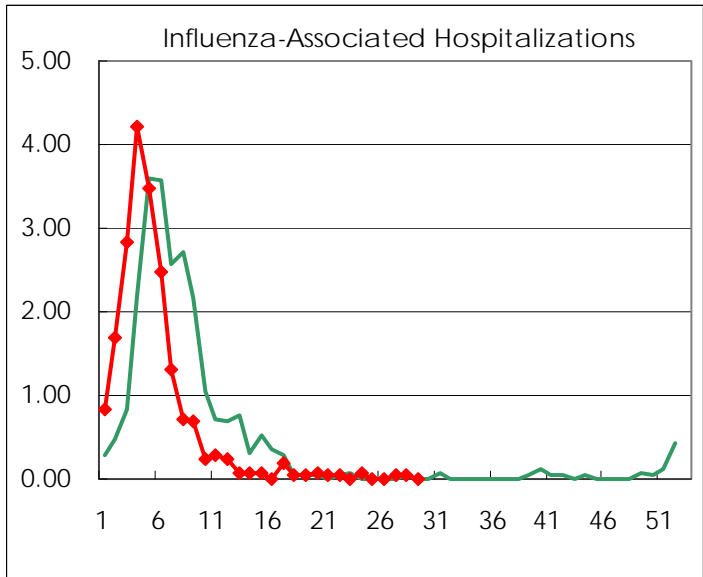
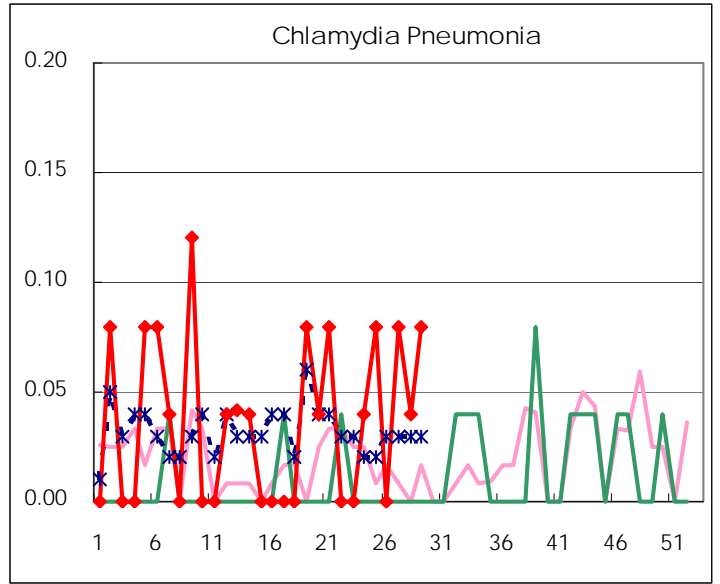
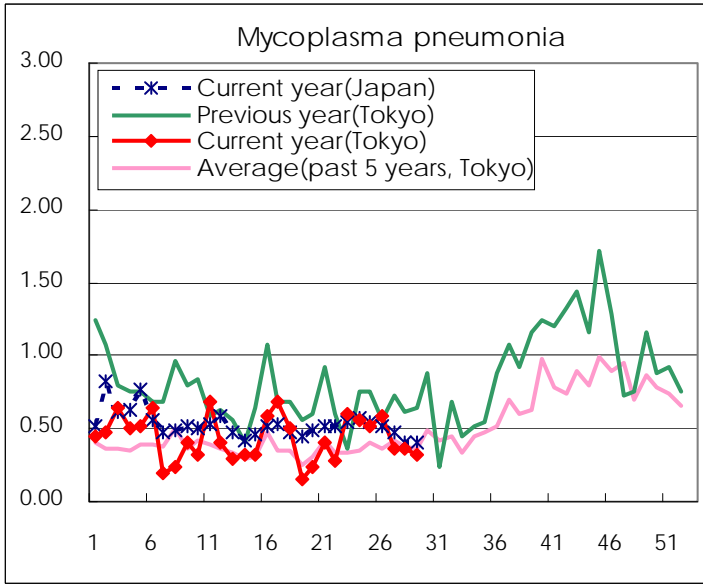
(Blank means 0.)

Disease Trend Graph (weekly reported cases per sentinel in comparison)









Number of sentinel facilities for weekly reporting		
Types of sentinels	Number of sentinels	Sentinels having reported
Pediatric	264	262
Influenza	419	413
Ophthalmic	39	39
Specially-designated	25	25

Tokyo Metropolitan Government
Infectious Disease Surveillance Center