

---

INFECTIOUS DISEASES WEEKLY REPORT

# TOKYO IDWR

Tokyo Metropolitan Infectious Disease Surveillance Center

## 22 August 2013 / Number 33

### Surveillance System in Tokyo, Japan

The infectious diseases which all physicians must report

All physicians must report to health centers the incidence of the diseases which are shown at page one. Health centers electronically report the individual cases to Tokyo Metropolitan Infectious Disease Surveillance Center.

The infectious diseases required to be reported by the sentinels

The numbers of patients who visit the sentinel clinics or hospitals during a week are reported to health centers in Tokyo. And they electronically report the numbers to Tokyo Metropolitan Infectious Disease Surveillance Center. We have about 500 sentinel clinics and hospitals in Tokyo.

1st Week is early January and 52nd Week is end of December.

Tokyo Metropolitan Institute of Public Health

TEL:81-3-3363-3213 FAX:81-3-5332-7365

e-mail:[idsc@tokyo-eiken.go.jp](mailto:idsc@tokyo-eiken.go.jp)

URL:[idsc.tokyo-eiken.go.jp/](http://idsc.tokyo-eiken.go.jp/)

---

## Number of patients with the diseases which all physicians must report

Category	Diseases	Tokyo					Japan	
		30th	31st	32nd	33rd	Cum 2013	33rd	Cum 2013
I	Ebola hemorrhagic fever							
	Crimean-Congo hemorrhagic fever							
	Smallpox							
	South American hemorrhagic fever							
	Plague							
	Marburg disease							
	Lassa fever							
II	Acute poliomyelitis							1
	Tuberculosis	69	71	61	65	2,492	337	16,693
	Diphtheria							
	Severe Acute Respiratory Syndrome(SARS)							
	Avian influenza H5N1							
※	Avian influenza H7N9							
III	Cholera						1	2
	Shigellosis	1		1	1	18	4	90
	Enterohemorrhagic Escherichia coli infection	37	17	13	19	200	184	2,019
	Typhoid fever					13		39
	Paratyphoid fever	1				16		35
IV	Hepatitis E			1		22	1	83
	West Nile fever							
	Hepatitis A		1		1	16	1	95
	Echinococcosis							12
	Yellow fever							
	Psittacosis					2		7
	Omsk hemorrhagic fever							
	Relapsing fever							
	Kyasanur forest disease							
	Q fever					3		3
	Rabies							
	Coccidioidomycosis					3		3
	Monkeypox							
	Severe Fever with Thrombocytopenia Syndrome							34
	Hemorrhagic fever with renal syndrome							
	Western equine encephalitis							
	Tick-borne encephalitis							
	Anthrax							
	Chikungunya fever					3	1	9
	Scrub typhus(Tsutsugamushi disease)					1		142
	Dengue fever	1	1	2	5	36	11	131
	Eastern equine encephalitis							
	Avian influenza (excluding H5N1 and H7N9)							
	Nipah virus infection							
	Japanese spotted fever						1	63
	Japanese encephalitis							
	Hantavirus pulmonary syndrome							
	Herpes B virus infection							
	Glanders							
	Brucellosis							2
	Venezuelan equine encephalitis							
	Hendra virus infection							
Epidemic typhus								
Botulism								
Malaria				1	6	1	27	
Tularemia								
Lyme disease		1			2		7	
Lyssavirus infection(excluding rabies)								
Rift valley fever								
Melioidosis					1		2	
Legionellosis	1	2	3	1	46	31	647	
Leptospirosis					1		7	
Rocky mountain spotted fever								

Category	Diseases	Tokyo					Japan	
		30th	31st	32nd	33rd	Cum 2013	33rd	Cum 2013
V	Amebiasis	5	5	3	4	128	14	651
	Viral hepatitis(excluding hepatitis A and E)	3	2	4	1	50	2	178
	Acute encephalitis(excluding JE and WNE)	1				32	1	243
	Cryptosporidiosis		1			2		11
	Creutzfeldt-Jakob disease			1		10	2	129
	Severe invasive streptococcal infections(TSLS)					22		134
	Acquired immunodeficiency syndrome (AIDS)	15	7	5	4	295	15	949
	Giardiasis					13	1	45
	Invasive <i>Haemophilus influenzae</i> disease		1			6	2	61
	Invasive meningococcal disease					6		14
	Invasive pneumococcal disease	1	3	1	4	59	9	520
	Meningococcal meningitis							2
	Congenital rubella syndrome	1		2		6		11
	Syphilis	15	10	9	6	256	25	743
	Tetanus					3	2	82
	Vancomycin-resistant <i>S. aureus</i> infection							
	Vancomycin-resistant <i>Enterococcus</i> infection				1	7	1	37
	Rubella	56	38	38	24	3,303	61	13,747
Measles	1	2	1		56	6	187	

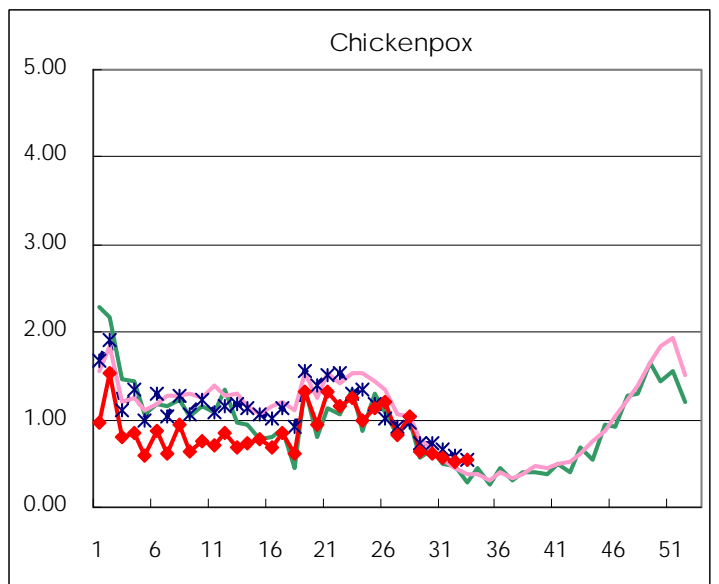
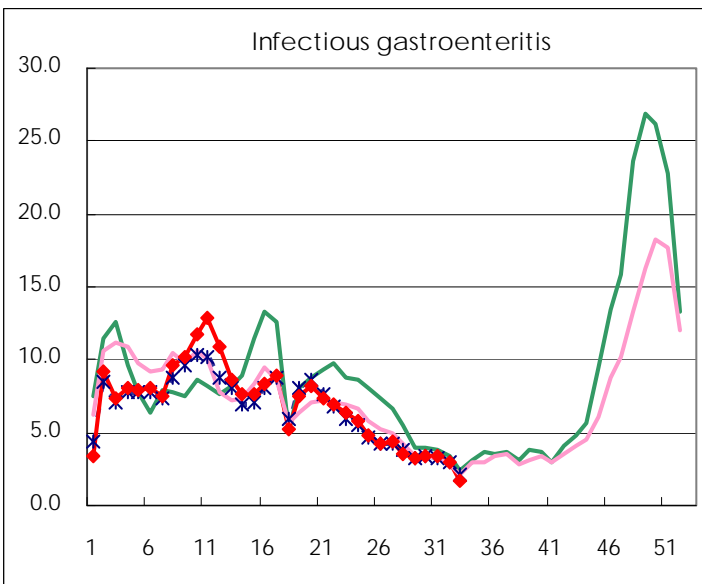
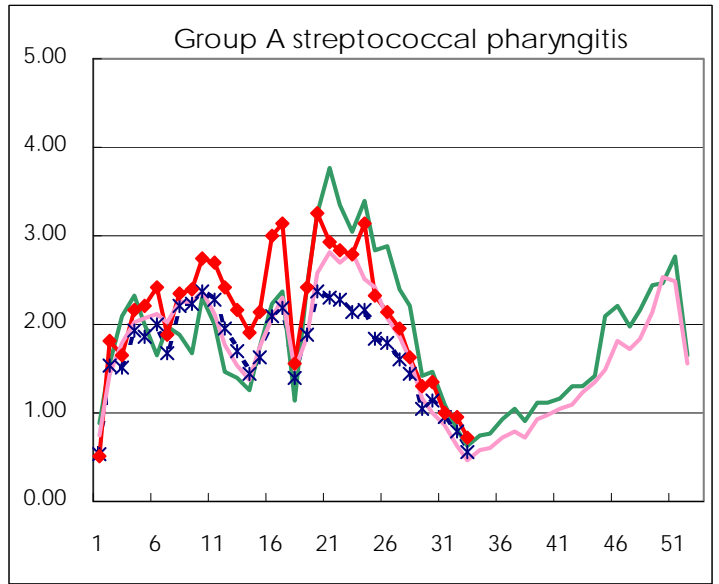
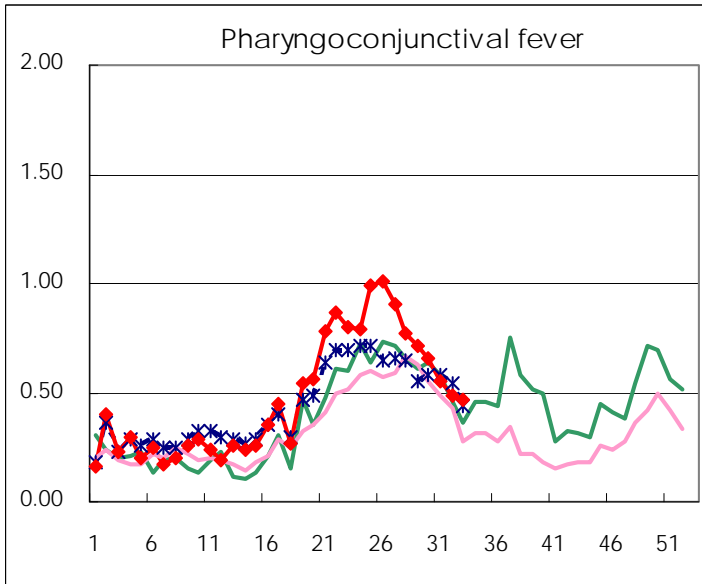
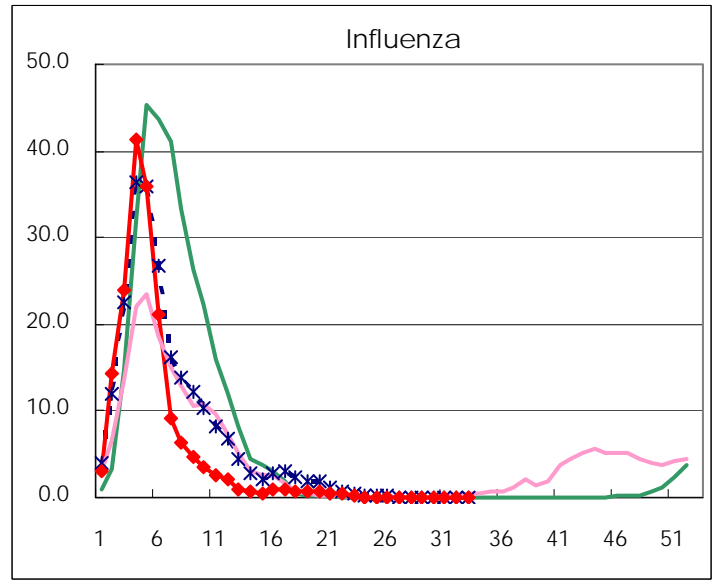
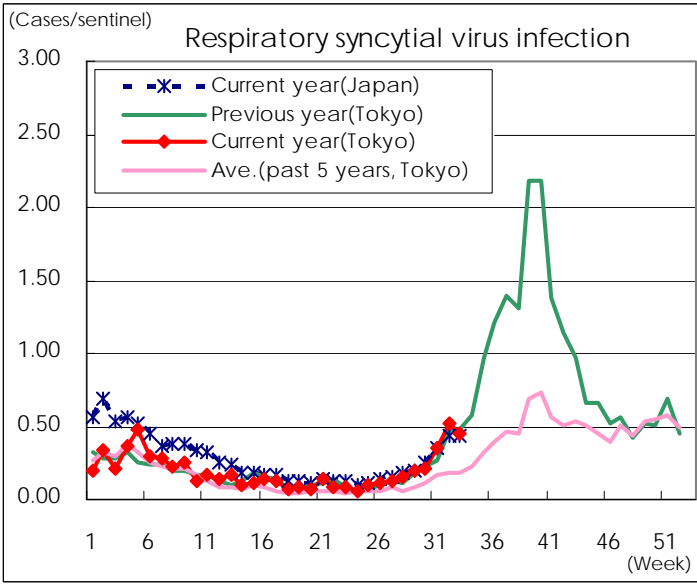
※ Designated infectious disease

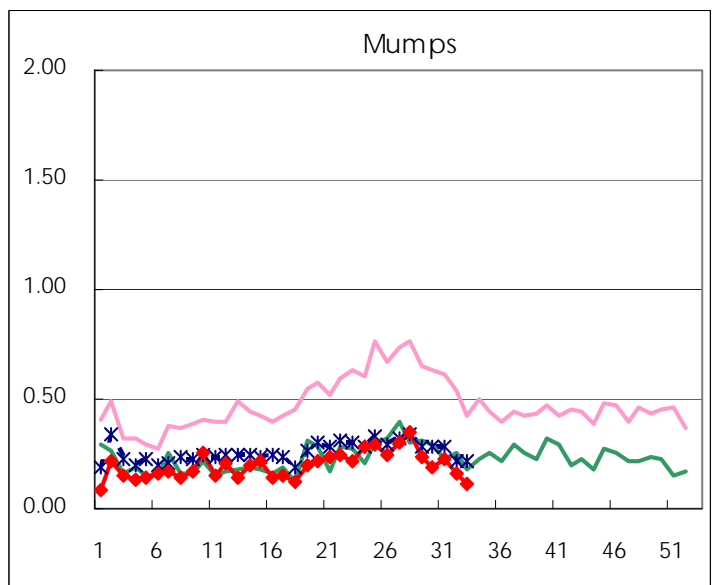
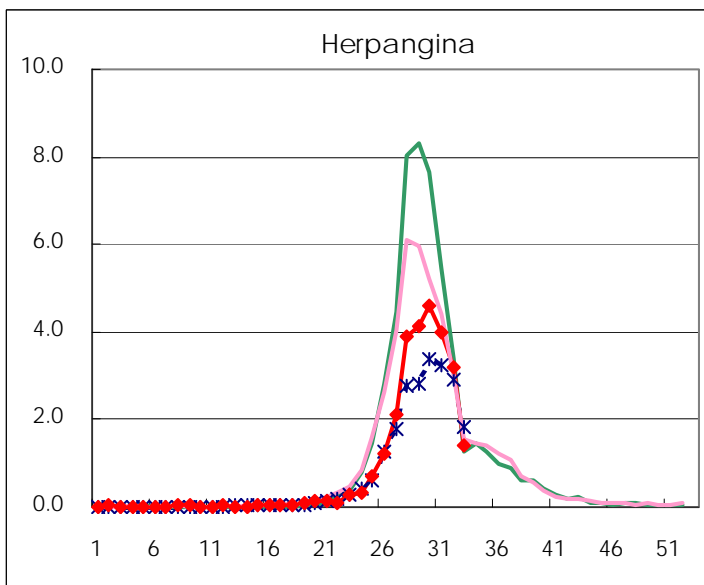
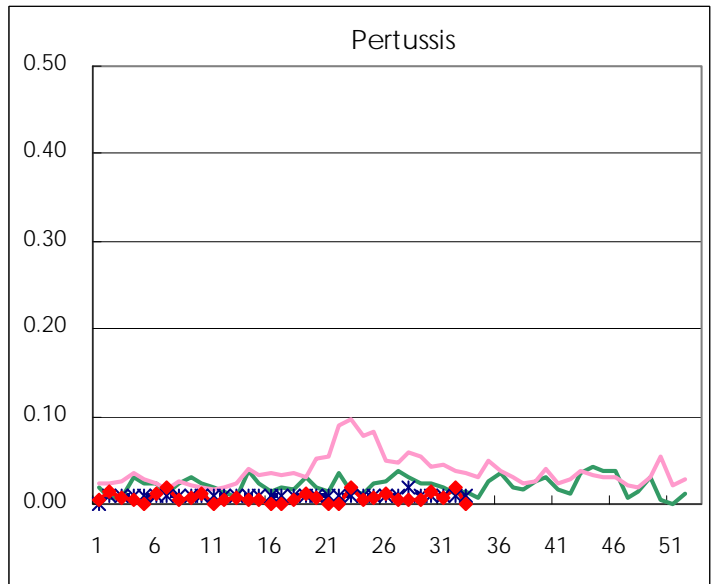
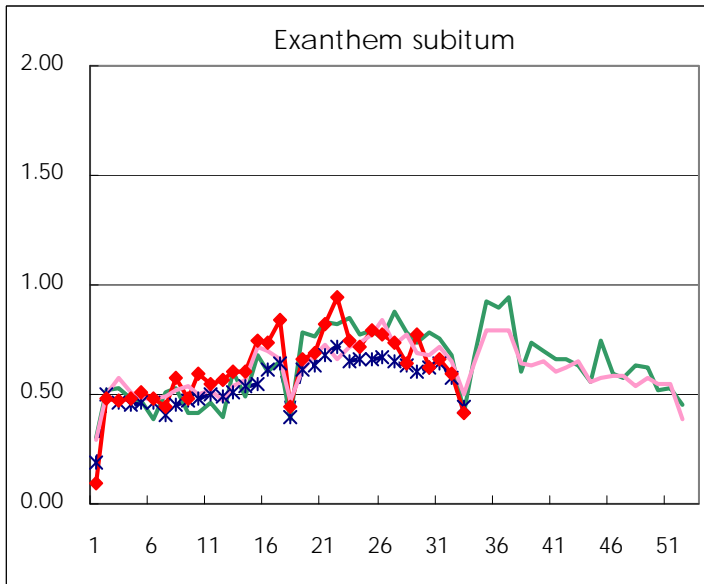
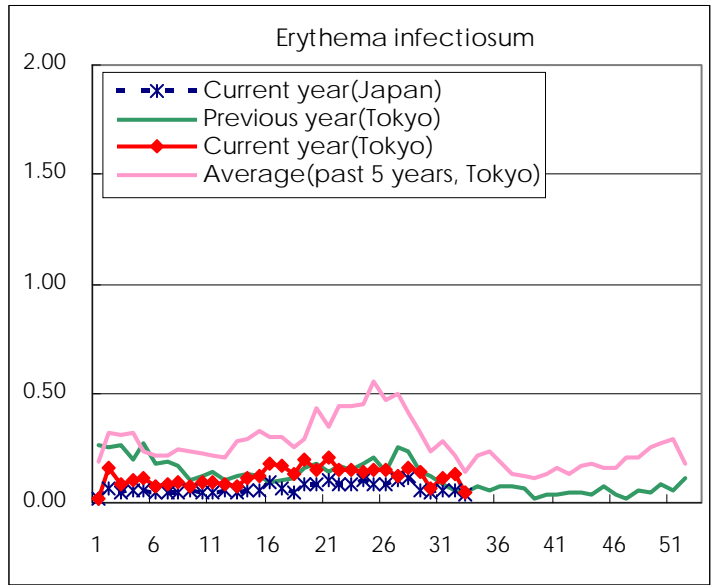
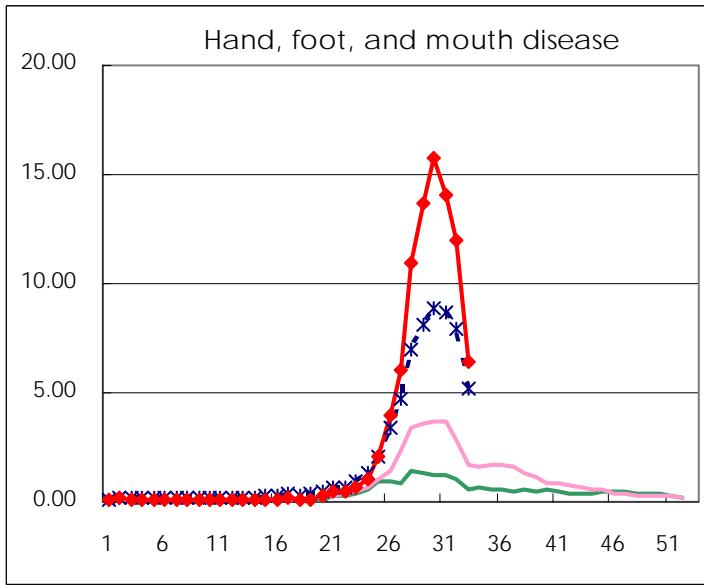
Number of patients with the diseases to be reported  
by the designated clinics and hospitals

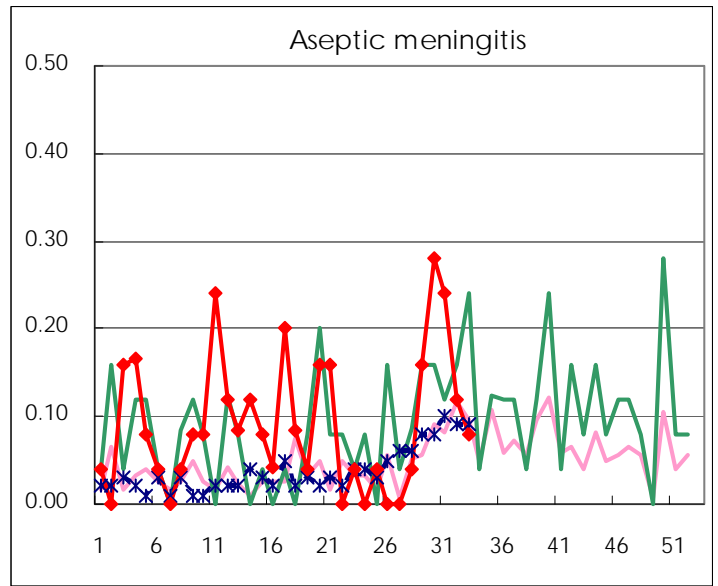
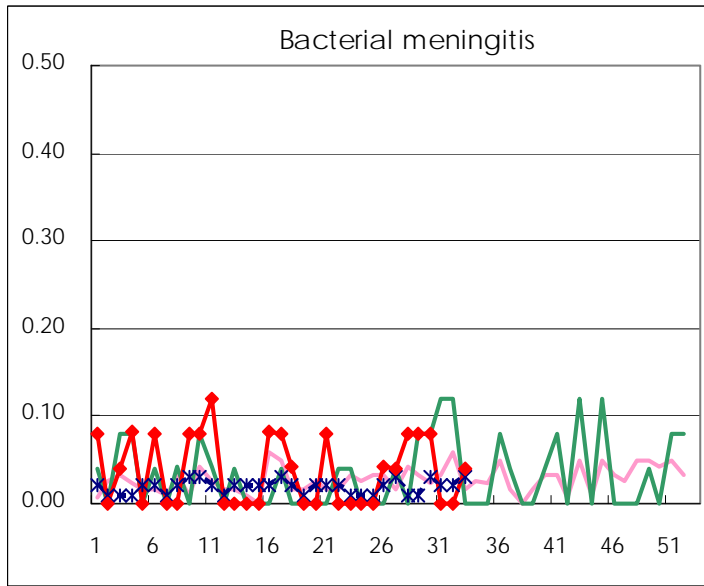
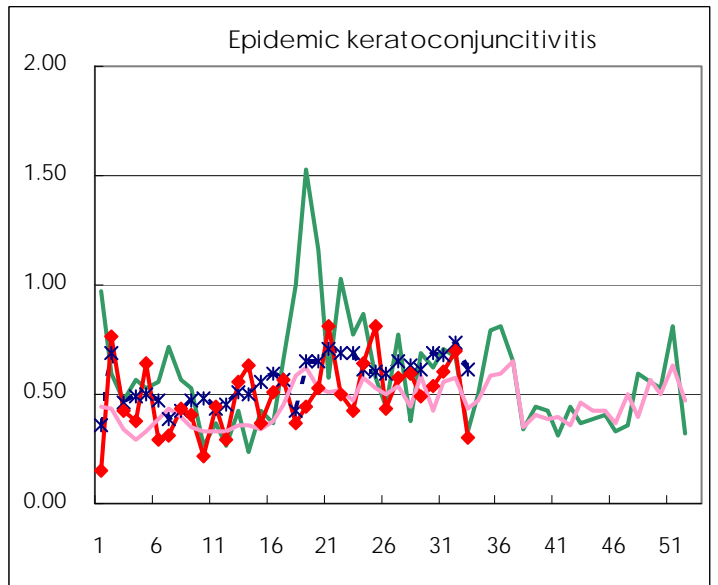
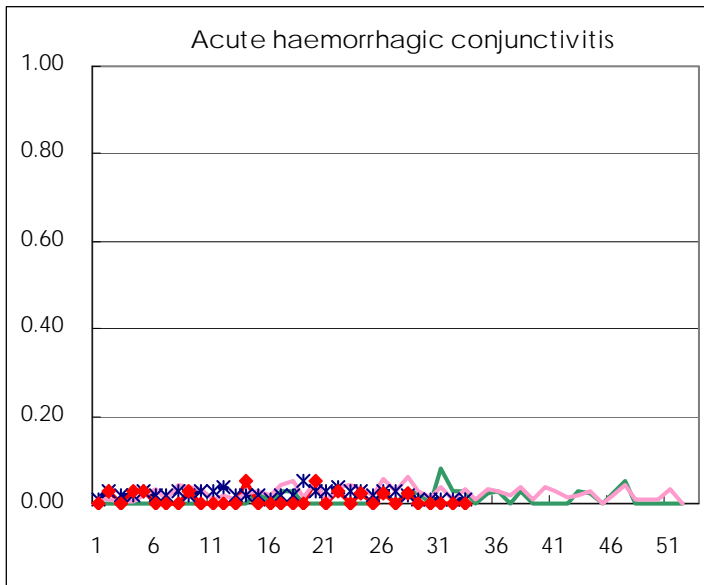
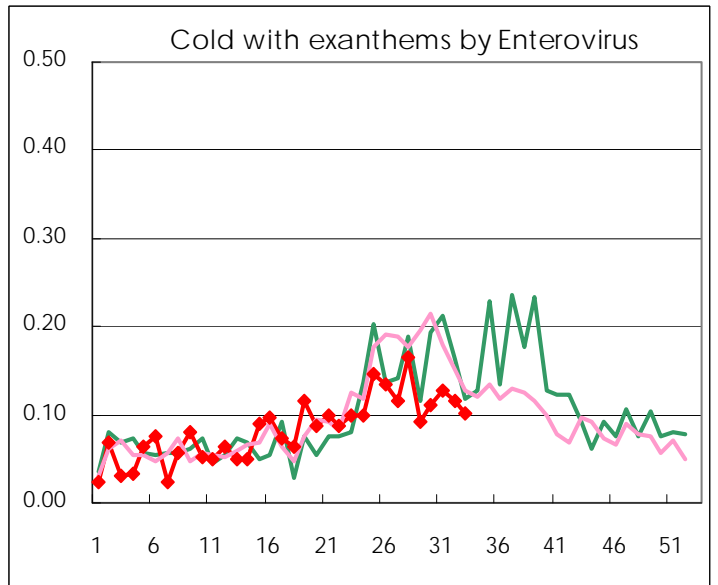
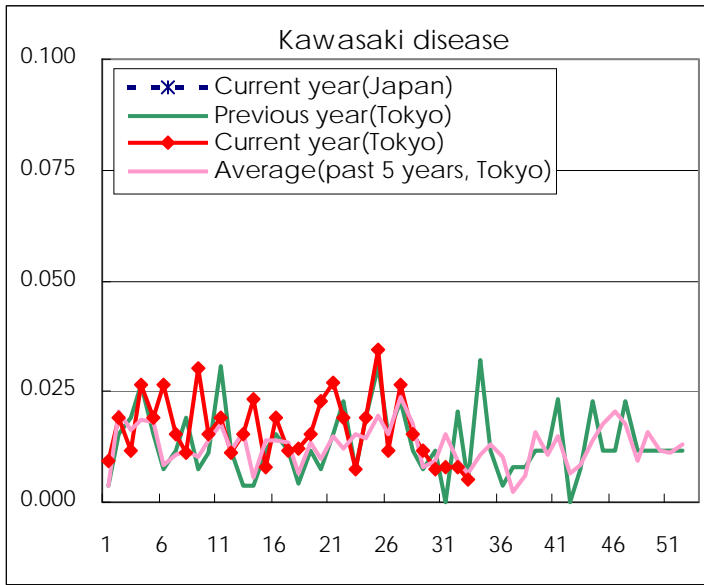
Diseases	Tokyo				
	30th	31st	32nd	33rd	/sentinel
Respiratory syncytial virus infection	55	93	133	89	0.45
Pharyngoconjunctival fever	172	142	122	93	0.47
Group A streptococcal pharyngitis	352	260	243	141	0.71
Infectious gastroenteritis	899	869	756	342	1.73
Chickenpox	161	146	130	106	0.54
Hand, foot, and mouth disease	4,126	3,648	3,021	1,268	6.40
Erythema infectiosum	16	30	32	9	0.05
Exanthem subitum	163	171	149	82	0.41
Pertussis	4	2	5		
Herpangina	1,208	1,037	799	281	1.42
Mumps	49	59	41	23	0.12
Kawasaki disease	2	2	2	1	0.01
Cold with exanthems by Enterovirus	29	33	29	20	0.10
Influenza	2	9	5	2	0.01
Acute hemorrhagic conjunctivitis					
Epidemic keratoconjunctivitis	21	23	26	9	0.30
Bacterial meningitis	2			1	0.04
Aseptic meningitis	7	6	3	2	0.08
Mycoplasma pneumonia	12	16	8	7	0.28
Chlamydial pneumonia (excluding psittacosis)				2	0.08
Influenza-Associated Hospitalizations	1				

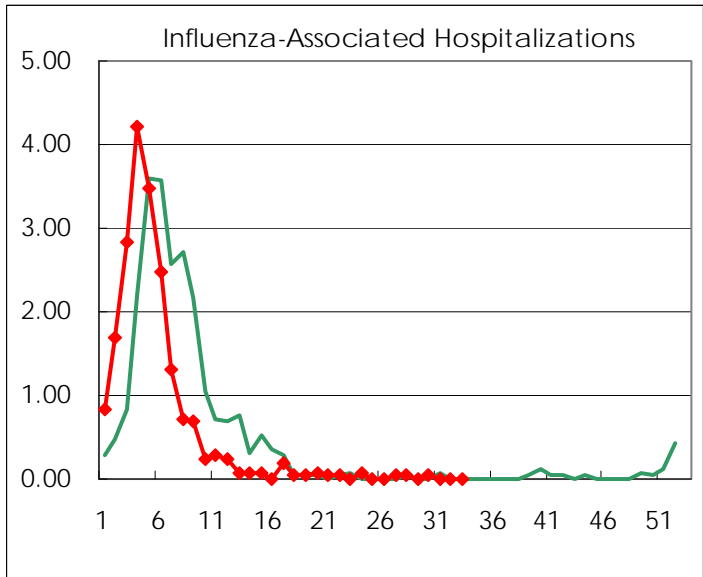
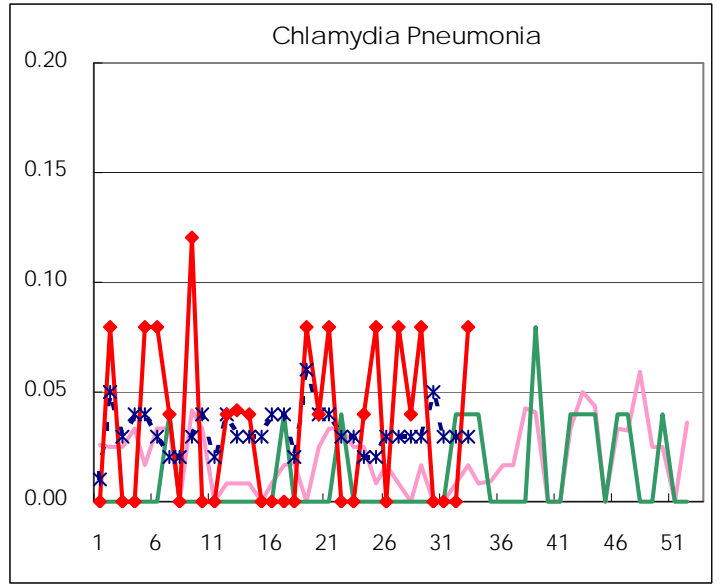
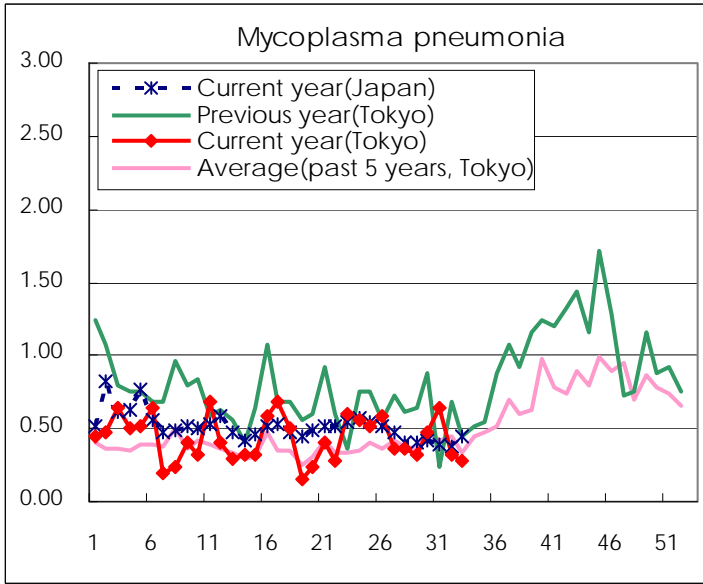
( Blank means 0. )

# Disease Trend Graph (weekly reported cases per sentinel in comparison)









Number of sentinel facilities for weekly reporting		
Types of sentinels	Number of sentinels	Sentinels having reported
Pediatric	264	198
Influenza	419	334
Ophthalmic	39	30
Specially-designated	25	25

Tokyo Metropolitan Government  
Infectious Disease Surveillance Center