

---

INFECTIOUS DISEASES WEEKLY REPORT

# TOKYO IDWR

Tokyo Metropolitan Infectious Disease Surveillance Center

## 5 September 2013 / Number 35

### Surveillance System in Tokyo, Japan

The infectious diseases which all physicians must report

All physicians must report to health centers the incidence of the diseases which are shown at page one. Health centers electronically report the individual cases to Tokyo Metropolitan Infectious Disease Surveillance Center.

The infectious diseases required to be reported by the sentinels

The numbers of patients who visit the sentinel clinics or hospitals during a week are reported to health centers in Tokyo. And they electronically report the numbers to Tokyo Metropolitan Infectious Disease Surveillance Center. We have about 500 sentinel clinics and hospitals in Tokyo.

1st Week is early January and 52nd Week is end of December.

Tokyo Metropolitan Institute of Public Health

TEL:81-3-3363-3213 FAX:81-3-5332-7365

e-mail:[idsc@tokyo-eiken.go.jp](mailto:idsc@tokyo-eiken.go.jp)

URL:[idsc.tokyo-eiken.go.jp/](http://idsc.tokyo-eiken.go.jp/)

---

## Number of patients with the diseases which all physicians must report

Category	Diseases	Tokyo					Japan	
		32nd	33rd	34th	35th	Cum 2013	35th	Cum 2013
I	Ebola hemorrhagic fever							
	Crimean-Congo hemorrhagic fever							
	Smallpox							
	South American hemorrhagic fever							
	Plague							
	Marburg disease							
	Lassa fever							
II	Acute poliomyelitis							1
	Tuberculosis	66	84	63	64	2,653	381	17,729
	Diphtheria							
	Severe Acute Respiratory Syndrome(SARS)							
	Avian influenza H5N1							
※	Avian influenza H7N9							
III	Cholera							2
	Shigellosis	1		2	3	22	7	101
	Enterohemorrhagic Escherichia coli infection	13	20	33	13	247	173	2,505
	Typhoid fever					13	1	40
	Paratyphoid fever					16	1	35
IV	Hepatitis E	1			1	23	1	86
	West Nile fever							
	Hepatitis A		1			16	2	97
	Echinococcosis							12
	Yellow fever							
	Psittacosis					2	1	8
	Omsk hemorrhagic fever							
	Relapsing fever							
	Kyasanur forest disease							
	Q fever					3		3
	Rabies							
	Coccidioidomycosis					3		3
	Monkeypox							
	Severe Fever with Thrombocytopenia Syndrome						1	36
	Hemorrhagic fever with renal syndrome							
	Western equine encephalitis							
	Tick-borne encephalitis							
	Anthrax							
	Chikungunya fever					3		9
	Scrub typhus(Tsutsugamushi disease)					1		142
	Dengue fever	2	5	1	3	40	11	151
	Eastern equine encephalitis							
	Avian influenza (excluding H5N1 and H7N9)							
	Nipah virus infection							
	Japanese spotted fever						8	80
	Japanese encephalitis							
	Hantavirus pulmonary syndrome							
	Herpes B virus infection							
	Glanders							
	Brucellosis							2
	Venezuelan equine encephalitis							
	Hendra virus infection							
	Epidemic typhus							
Botulism								
Malaria		1				6	1	29
Tularemia								
Lyme disease					4	6	6	13
Lyssavirus infection(excluding rabies)								
Rift valley fever								
Melioidosis						1		2
Legionellosis	3	1	1	1	48	20	695	
Leptospirosis			1			2	2	11
Rocky mountain spotted fever								

Category	Diseases	Tokyo				Japan		
		32nd	33rd	34th	35th	Cum 2013	35th	Cum 2013
V	Amebiasis	3	4	2	2	132	13	697
	Viral hepatitis(excluding hepatitis A and E)	4	1	2	1	53	2	188
	Acute encephalitis(excluding JE and WNE)					32	5	259
	Cryptosporidiosis					2		11
	Creutzfeldt-Jakob disease	1		1		11	4	141
	Severe invasive streptococcal infections(TSLS)			1	1	24	1	141
	Acquired immunodeficiency syndrome (AIDS)	5	4	7	8	310	19	1,000
	Giardiasis				2	15	3	50
	Invasive <i>Haemophilus influenzae</i> disease				1	7	3	68
	Invasive meningococcal disease			1		7		15
	Invasive pneumococcal disease	1	4	2		61	4	550
	Meningococcal meningitis							2
	Congenital rubella syndrome	2		1	1	8		13
	Syphilis	9	7	16	12	285	24	803
	Tetanus					3	1	91
	Vancomycin-resistant <i>S. aureus</i> infection							
	Vancomycin-resistant <i>Enterococcus</i> infection		1			7	1	40
	Rubella	38	24	21	18	3,341	55	13,937
Measles	1		2		58	3	191	

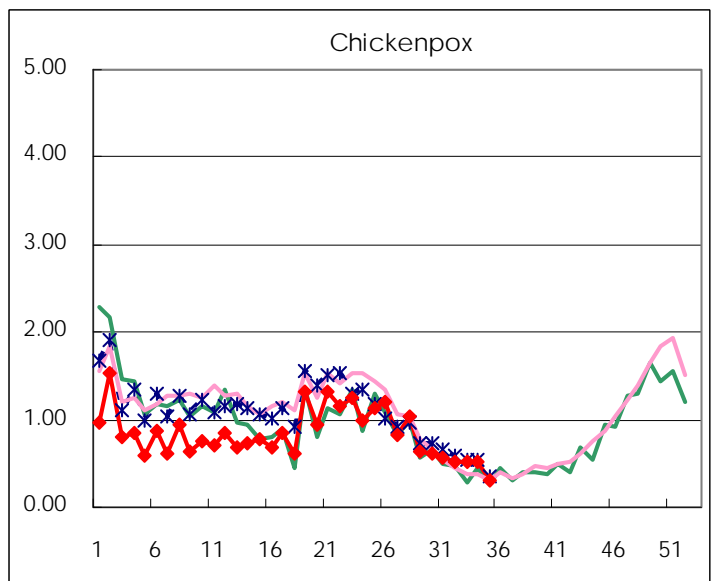
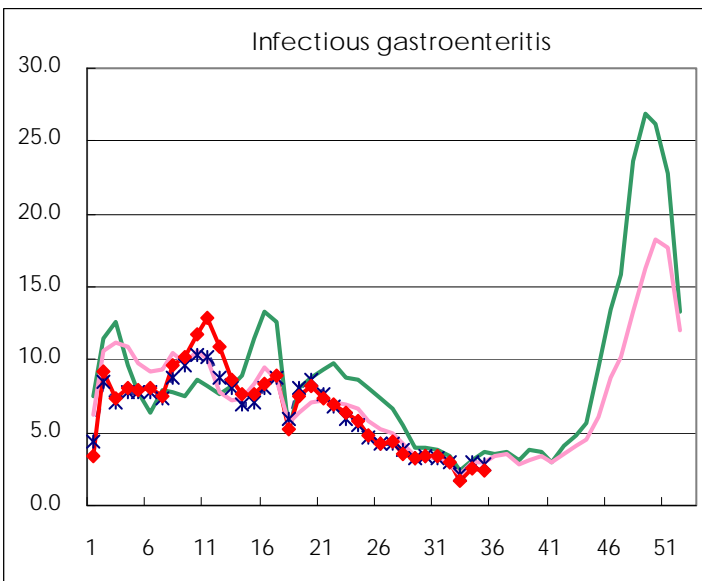
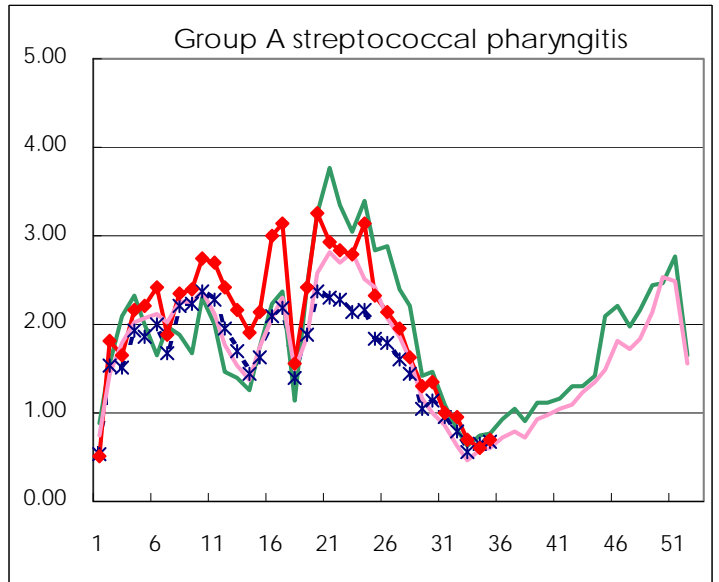
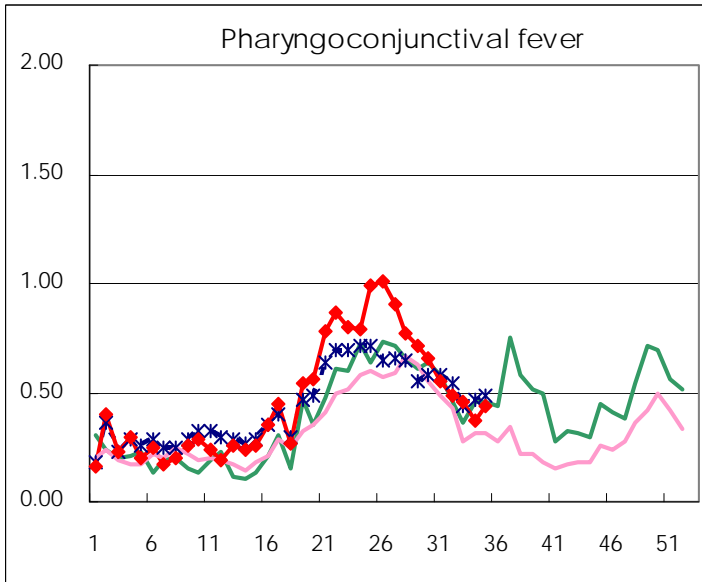
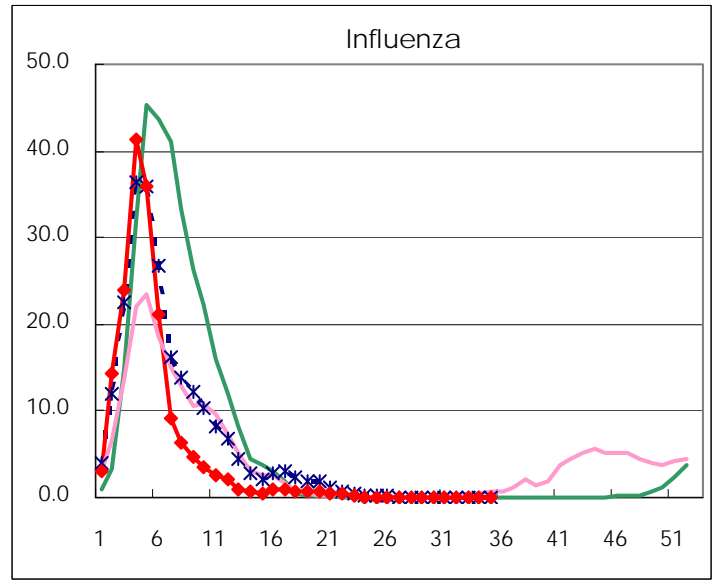
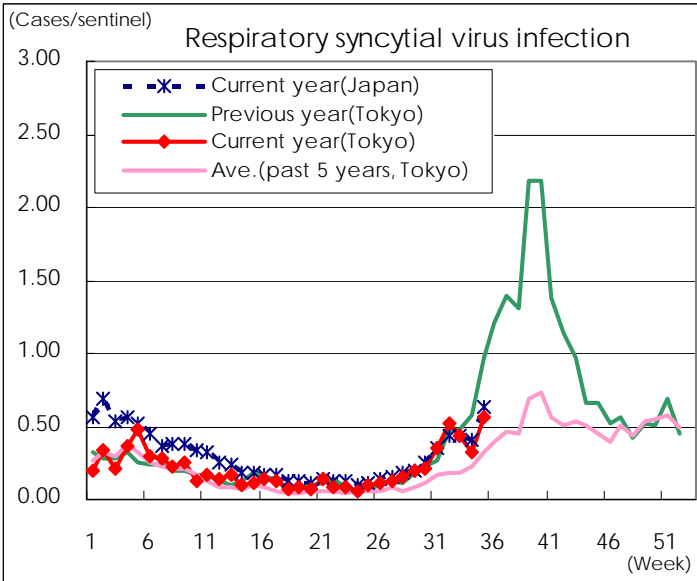
※ Designated infectious disease

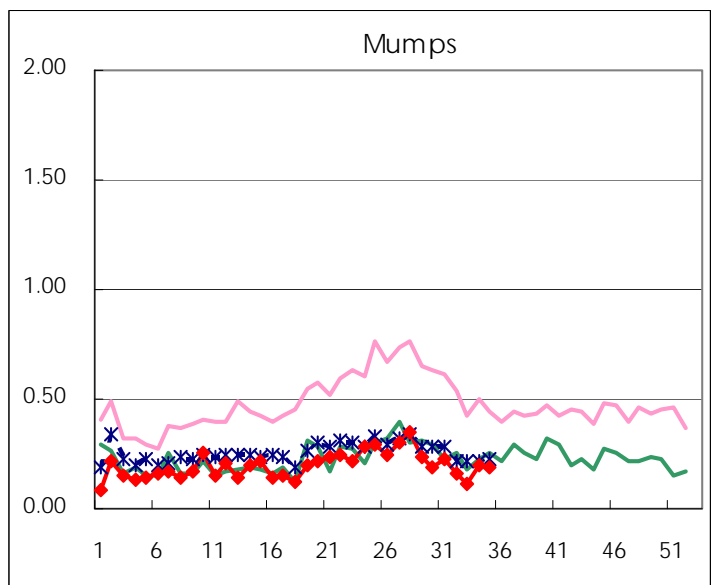
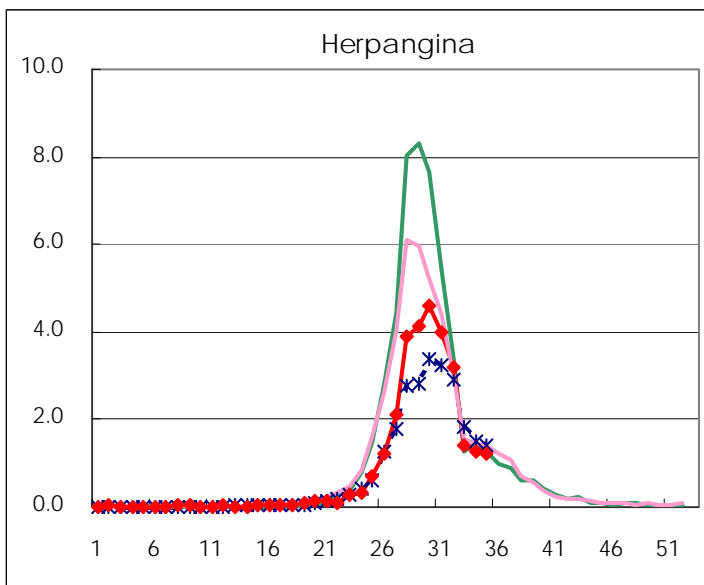
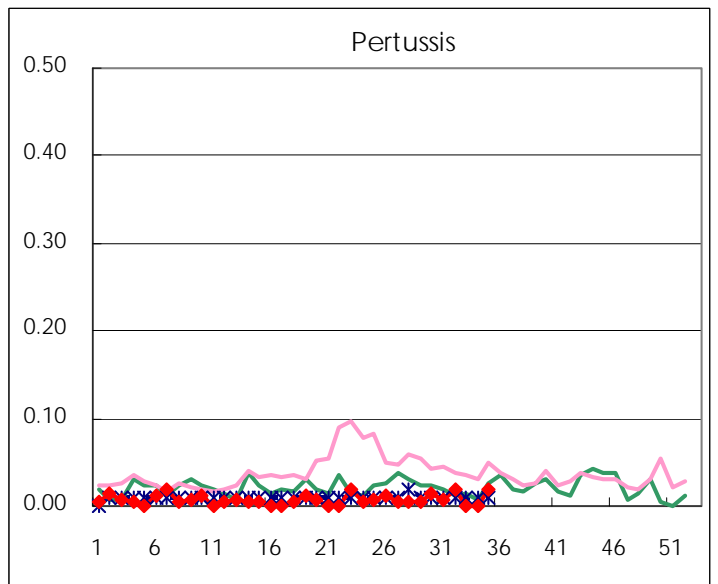
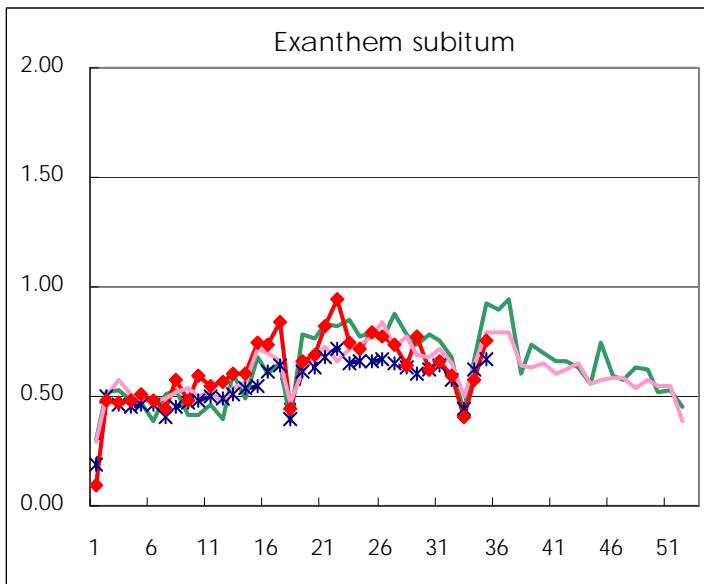
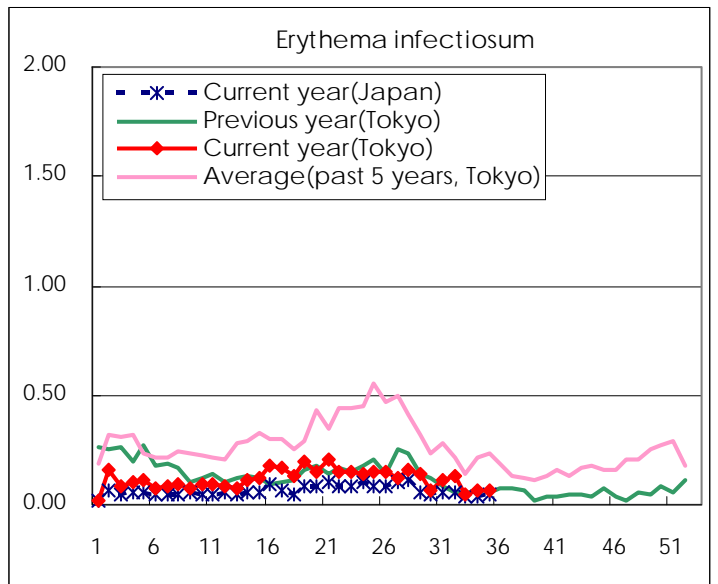
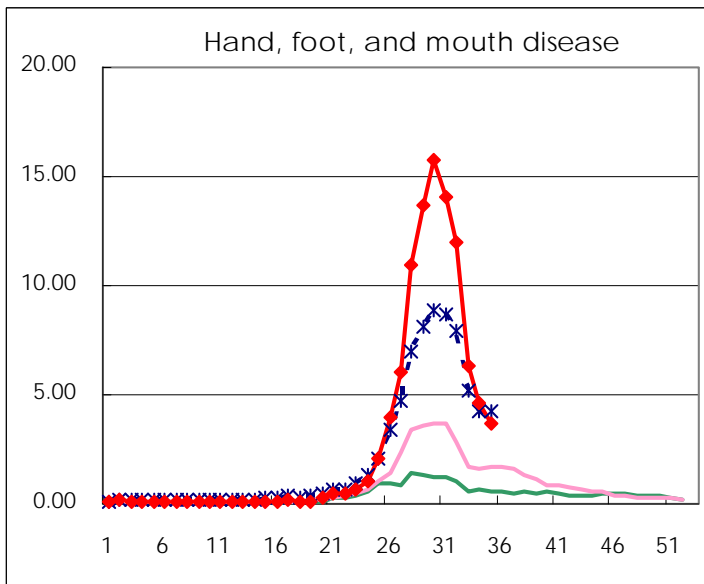
Number of patients with the diseases to be reported  
by the designated clinics and hospitals

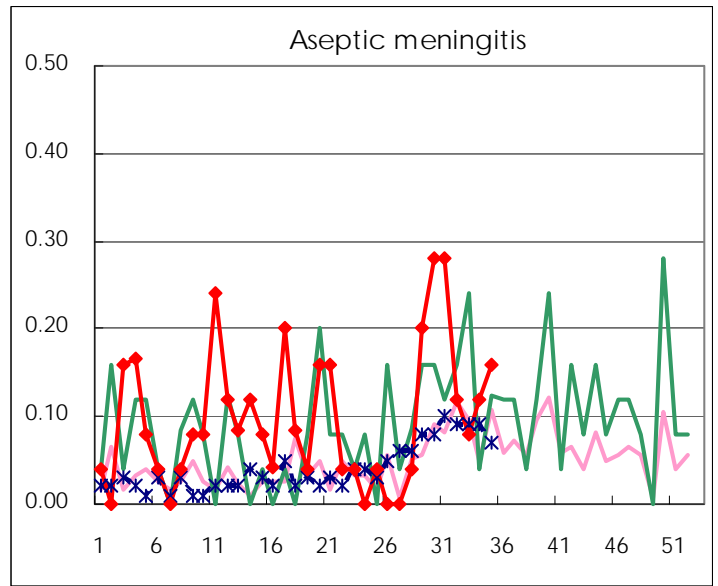
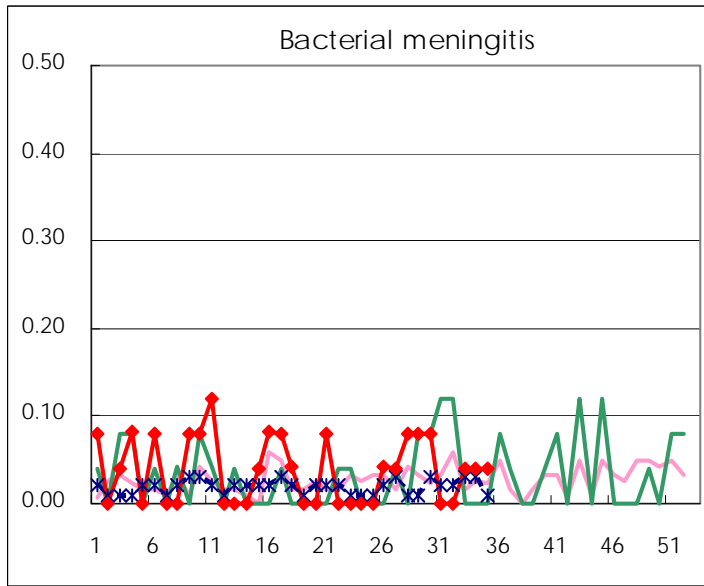
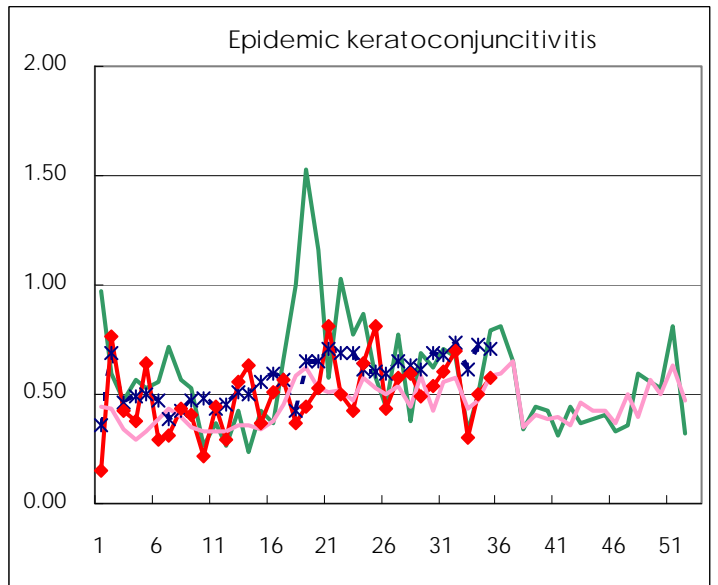
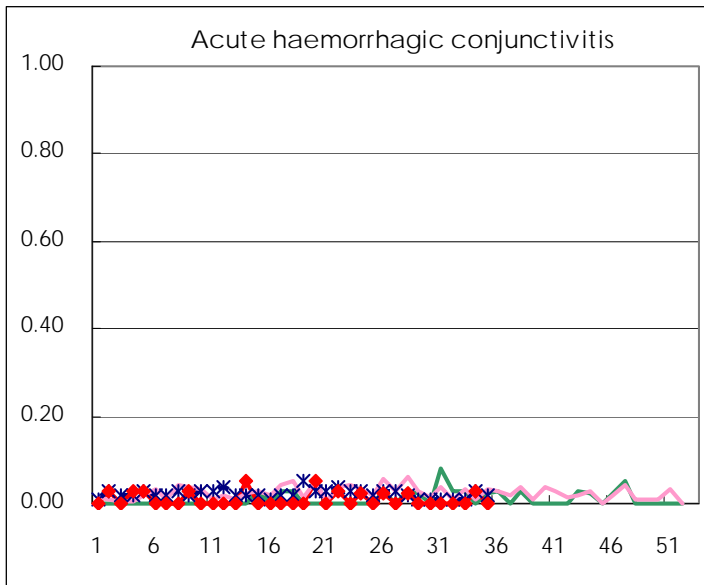
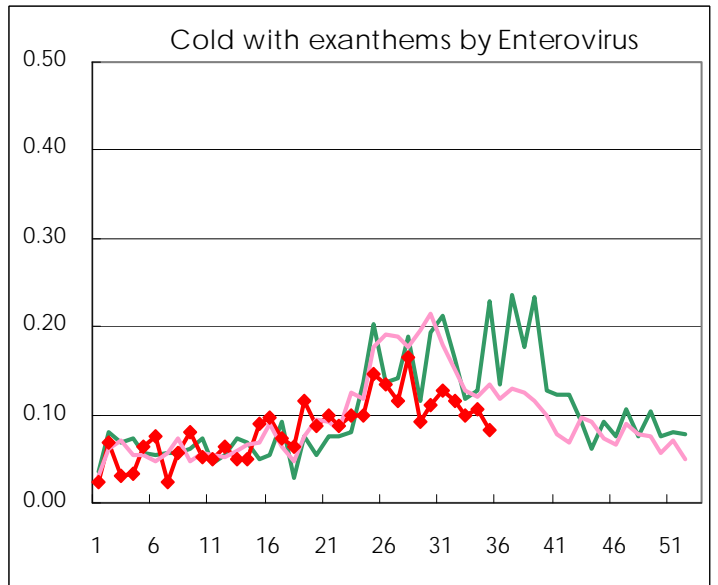
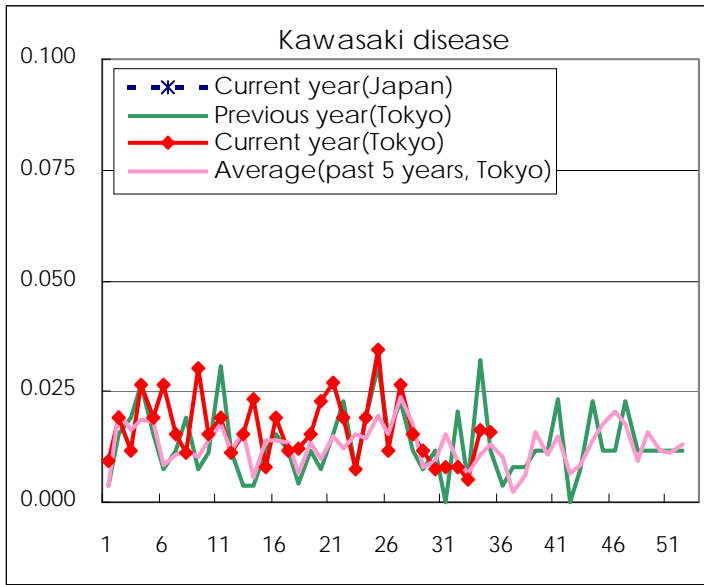
Diseases	Tokyo				
	32nd	33rd	34th	35th	/sentinel
Respiratory syncytial virus infection	133	89	78	146	0.57
Pharyngoconjunctival fever	122	93	92	112	0.44
Group A streptococcal pharyngitis	243	141	146	179	0.70
Infectious gastroenteritis	756	346	616	617	2.41
Chickenpox	130	106	127	78	0.30
Hand, foot, and mouth disease	3,021	1,273	1,136	943	3.68
Erythema infectiosum	32	9	15	17	0.07
Exanthem subitum	149	82	141	193	0.75
Pertussis	5			5	0.02
Herpangina	799	281	311	309	1.21
Mumps	41	23	49	48	0.19
Kawasaki disease	2	1	4	4	0.02
Cold with exanthems by Enterovirus	29	20	26	21	0.08
Influenza	5	2	3	1	0.00
Acute hemorrhagic conjunctivitis			1		
Epidemic keratoconjunctivitis	26	9	19	22	0.58
Bacterial meningitis		1	1	1	0.04
Aseptic meningitis	3	2	3	4	0.16
Mycoplasma pneumonia	9	8	11	6	0.24
Chlamydial pneumonia (excluding psittacosis)		2		1	0.04
Influenza-Associated Hospitalizations					

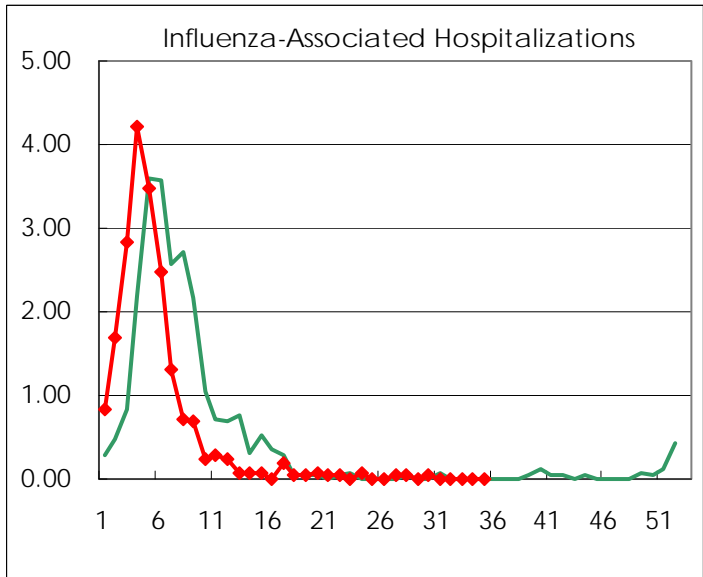
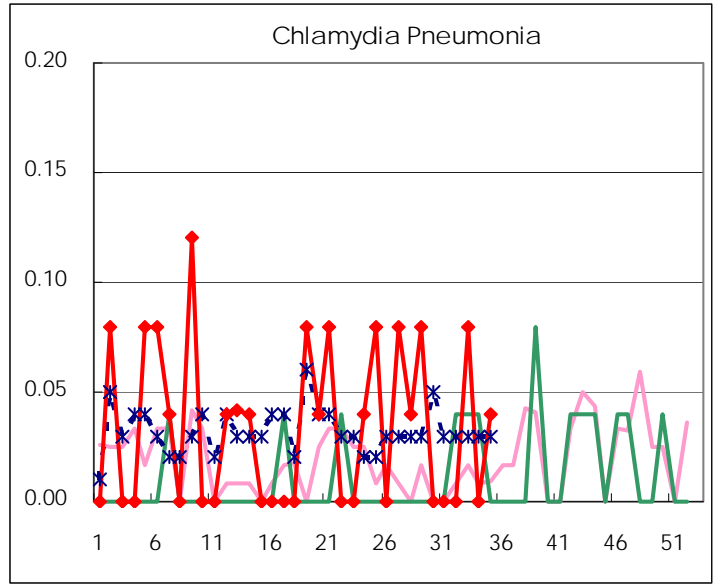
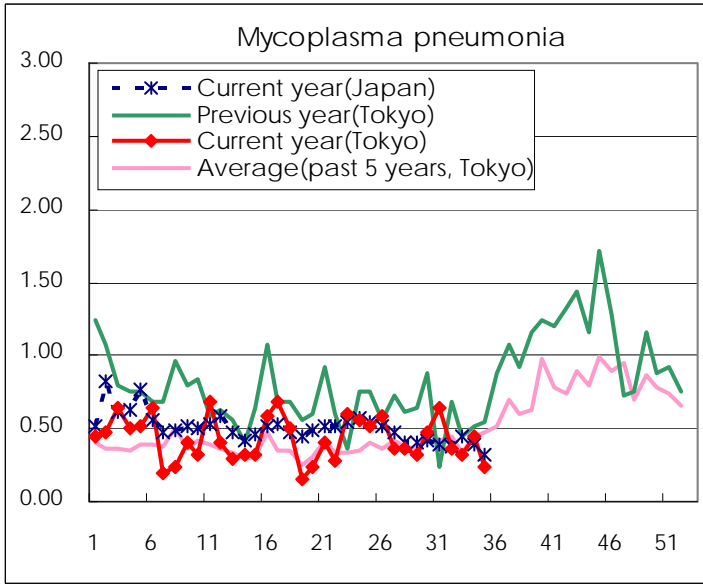
( Blank means 0. )

# Disease Trend Graph (weekly reported cases per sentinel in comparison)









Number of sentinel facilities for weekly reporting		
Types of sentinels	Number of sentinels	Sentinels having reported
Pediatric	264	256
Influenza	419	407
Ophthalmic	39	38
Specially-designated	25	25

Tokyo Metropolitan Government  
Infectious Disease Surveillance Center