

---

INFECTIOUS DISEASES WEEKLY REPORT

# TOKYO IDWR

Tokyo Metropolitan Infectious Disease Surveillance Center

## 19 September 2013 / Number 37

### Surveillance System in Tokyo, Japan

**The infectious diseases which all physicians must report**

All physicians must report to health centers the incidence of the diseases which are shown at page one. Health centers electronically report the individual cases to Tokyo Metropolitan Infectious Disease Surveillance Center.

**The infectious diseases required to be reported by the sentinels**

The numbers of patients who visit the sentinel clinics or hospitals during a week are reported to health centers in Tokyo. And they electronically report the numbers to Tokyo Metropolitan Infectious Disease Surveillance Center. We have about 500 sentinel clinics and hospitals in Tokyo.

1st Week is early January and 52nd Week is end of December.

Tokyo Metropolitan Institute of Public Health

TEL:81-3-3363-3213 FAX:81-3-5332-7365

e-mail:[idsc@tokyo-eiken.go.jp](mailto:idsc@tokyo-eiken.go.jp)

URL:[idsc.tokyo-eiken.go.jp/](http://idsc.tokyo-eiken.go.jp/)

---

## Number of patients with the diseases which all physicians must report

Category	Diseases	Tokyo					Japan	
		34th	35th	36th	37th	Cum 2013	37th	Cum 2013
I	Ebola hemorrhagic fever							
	Crimean-Congo hemorrhagic fever							
	Smallpox							
	South American hemorrhagic fever							
	Plague							
	Marburg disease							
	Lassa fever							
II	Acute poliomyelitis							1
	Tuberculosis	63	70	74	84	2,820	361	18,772
	Diphtheria							
	Severe Acute Respiratory Syndrome(SARS)							
	Avian influenza H5N1							
※	Avian influenza H7N9							
III	Cholera							2
	Shigellosis	2	3	3		25	3	106
	Enterohemorrhagic Escherichia coli infection	33	13	10	26	283	188	2,950
	Typhoid fever			1		14	2	44
	Paratyphoid fever					16		36
IV	Hepatitis E		1			23	1	88
	West Nile fever							
	Hepatitis A			1		17		99
	Echinococcosis							12
	Yellow fever							
	Psittacosis					2		8
	Omsk hemorrhagic fever							
	Relapsing fever							1
	Kyasanur forest disease							
	Q fever					3		3
	Rabies							
	Coccidioidomycosis					3		3
	Monkeypox							
	Severe Fever with Thrombocytopenia Syndrome						1	39
	Hemorrhagic fever with renal syndrome							
	Western equine encephalitis							
	Tick-borne encephalitis							
	Anthrax							
	Chikungunya fever					3	1	10
	Scrub typhus(Tsutsugamushi disease)			1		2		143
	Dengue fever	1	3	1	1	42	6	161
	Eastern equine encephalitis							
	Avian influenza (excluding H5N1 and H7N9)							
	Nipah virus infection							
	Japanese spotted fever						5	91
	Japanese encephalitis						1	1
	Hantavirus pulmonary syndrome							
	Herpes B virus infection							
	Glanders							
	Brucellosis							2
	Venezuelan equine encephalitis							
	Hendra virus infection							
	Epidemic typhus							
Botulism								
Malaria			1		7	1	31	
Tularemia								
Lyme disease		4		1	7	1	16	
Lyssavirus infection(excluding rabies)								
Rift valley fever								
Melioidosis					1		2	
Legionellosis	1	2	2	1	52	14	742	
Leptospirosis	1			1	3	1	14	
Rocky mountain spotted fever								

Category	Diseases	Tokyo					Japan	
		34th	35th	36th	37th	Cum 2013	37th	Cum 2013
V	Amebiasis	2	2	3	2	137	19	743
	Viral hepatitis(excluding hepatitis A and E)	2	1	2	3	58	2	204
	Acute encephalitis(excluding JE and WNE)			1	1	34	3	273
	Cryptosporidiosis					2		11
	Creutzfeldt-Jakob disease	1			1	12	1	148
	Severe invasive streptococcal infections(TSLS)	1	1	2		27		151
	Acquired immunodeficiency syndrome (AIDS)	7	8	14	15	339	21	1,075
	Giardiasis		2			15	2	58
	Invasive <i>Haemophilus influenzae</i> disease		1			7		69
	Invasive meningococcal disease	1		1		8		16
	Invasive pneumococcal disease	2			1	62	5	564
	Meningococcal meningitis							2
	Congenital rubella syndrome	1	1			8	1	14
	Syphilis	16	12	9	13	307	15	851
	Tetanus				1	4	4	100
	Vancomycin-resistant <i>S. aureus</i> infection							
	Vancomycin-resistant <i>Enterococcus</i> infection					7		43
	Rubella	21	18	10	11	3,362	37	14,033
	Measles	2			1	59	9	204

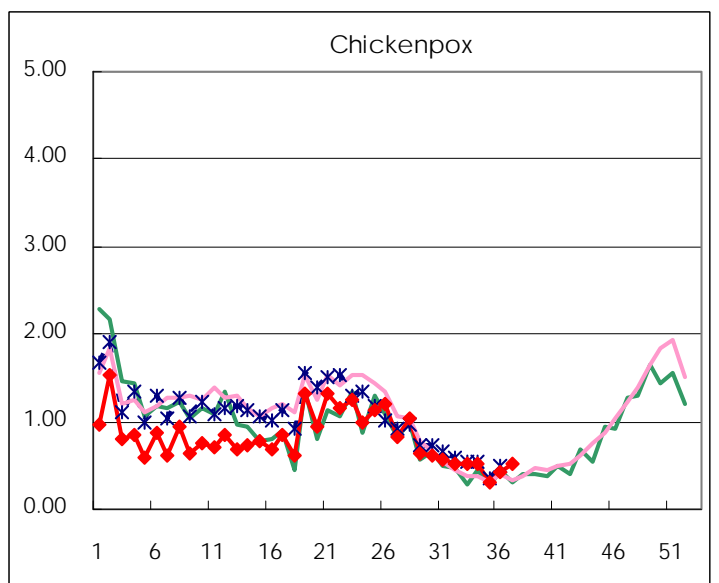
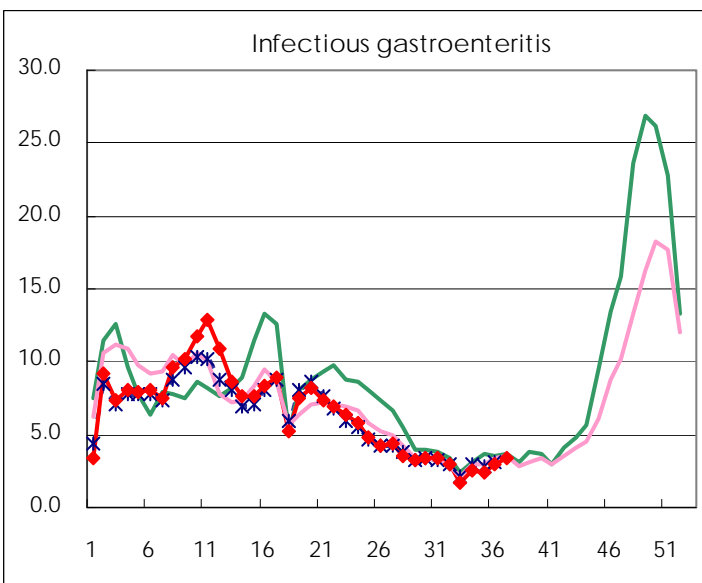
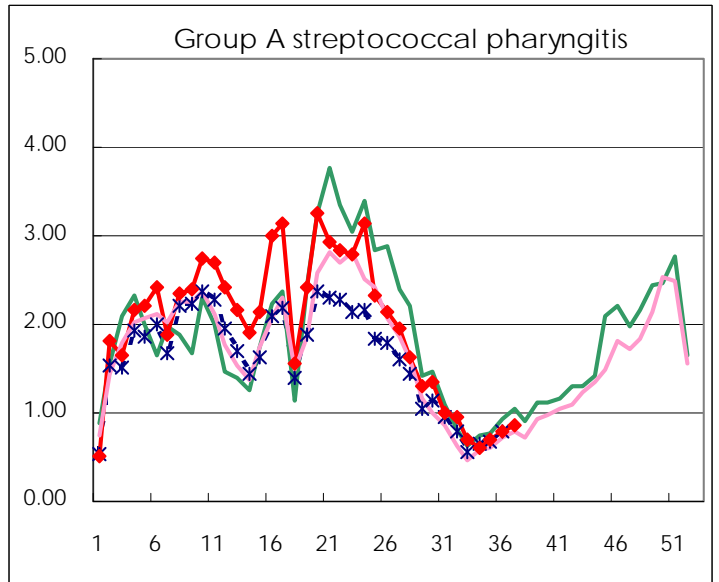
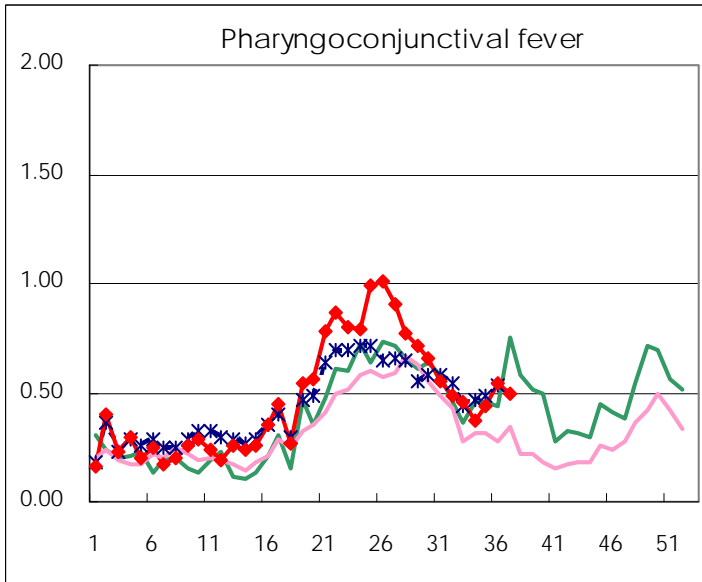
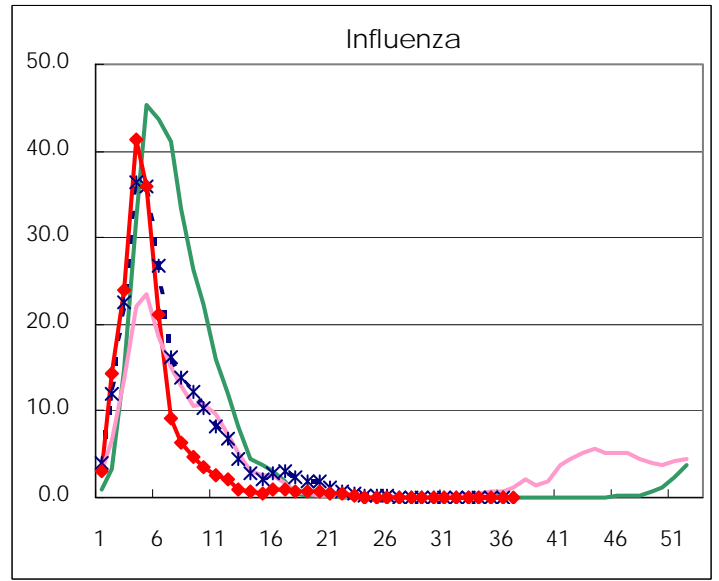
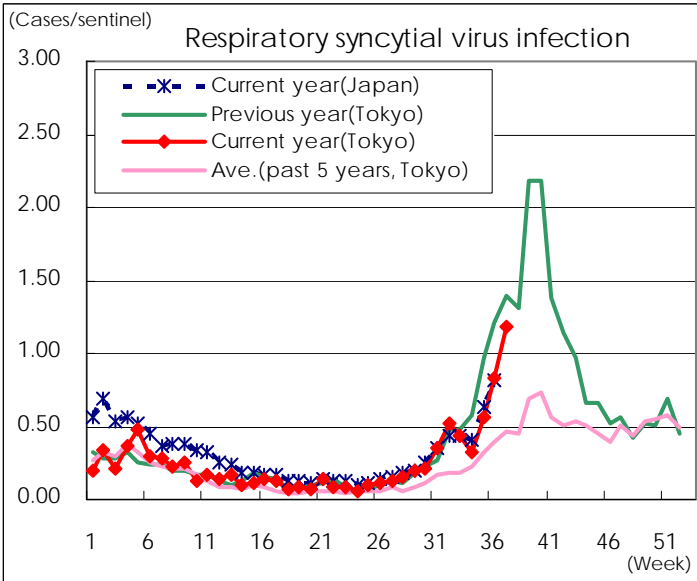
※ Designated infectious disease

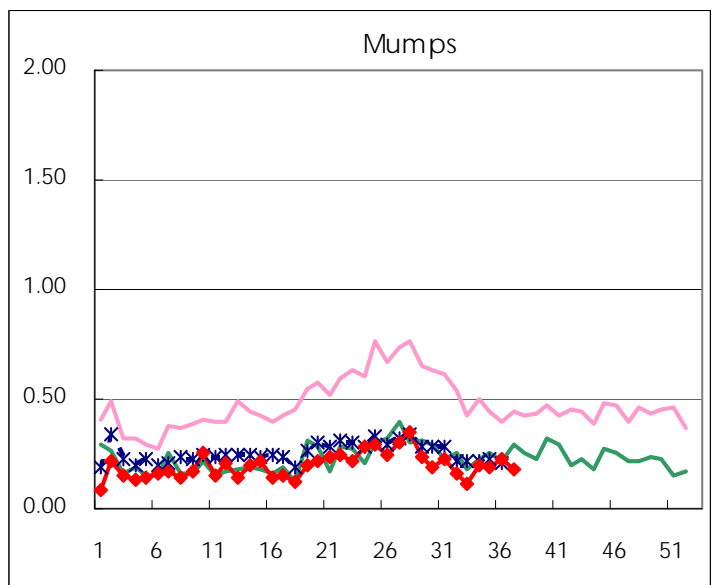
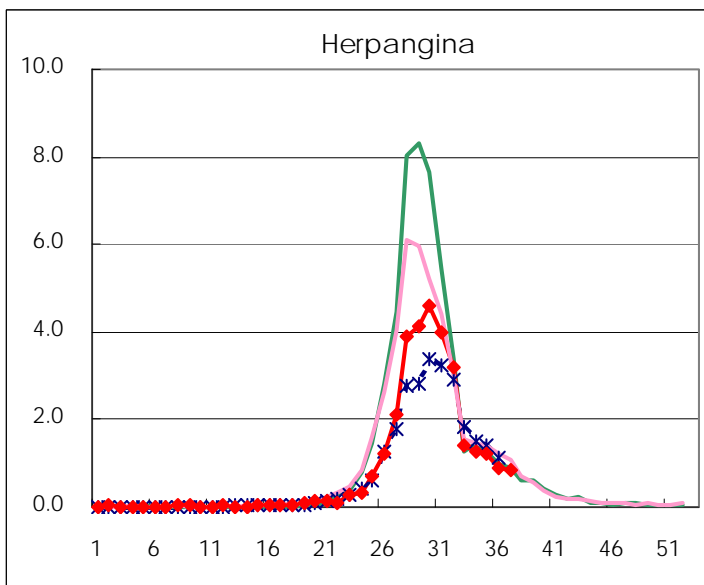
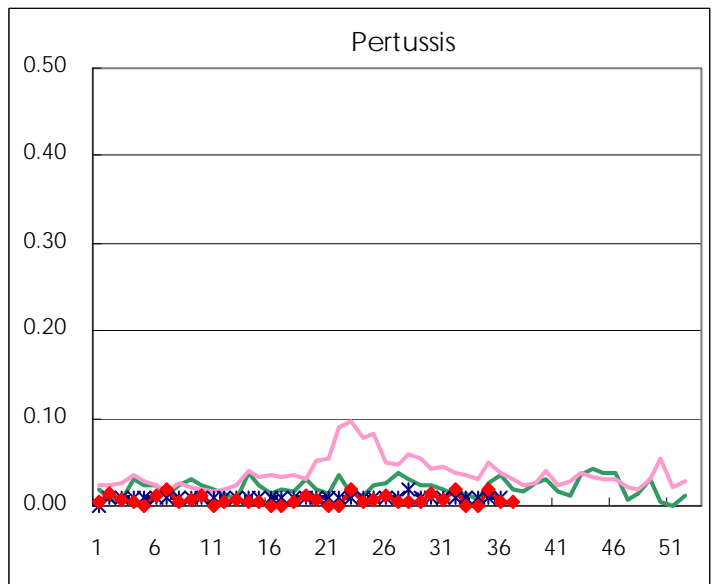
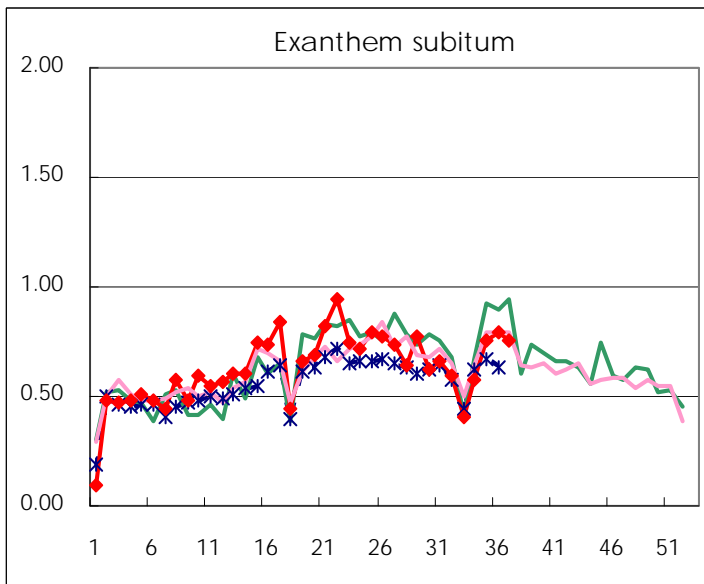
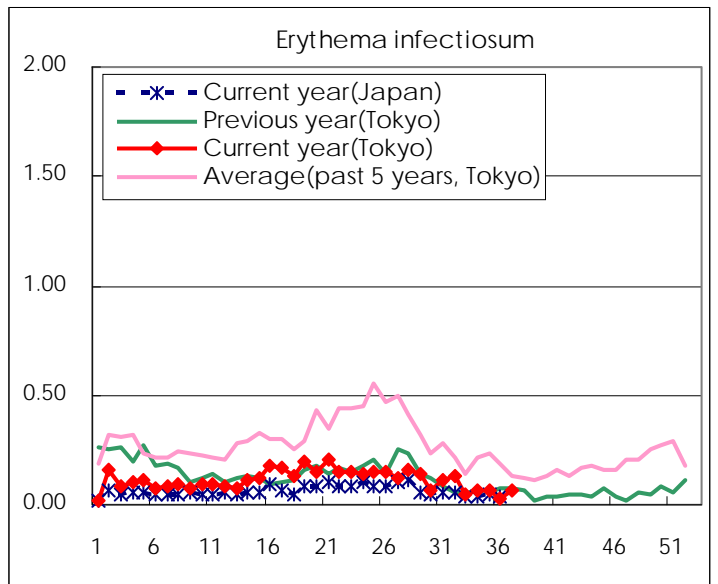
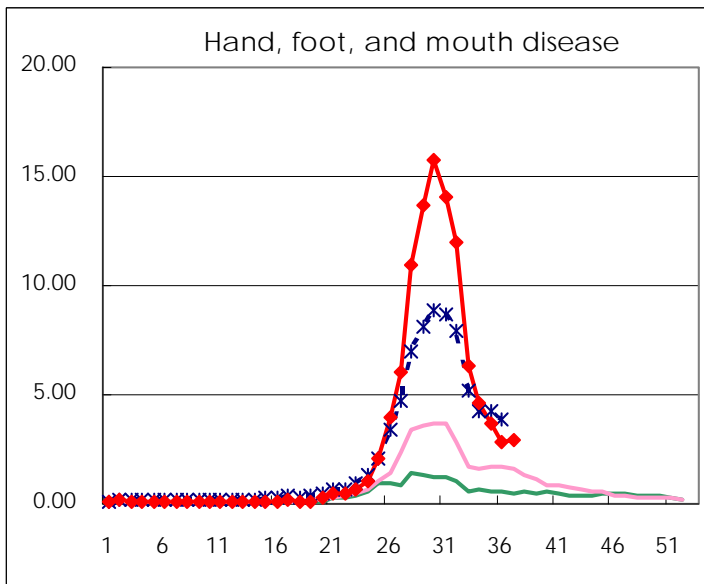
Number of patients with the diseases to be reported  
by the designated clinics and hospitals

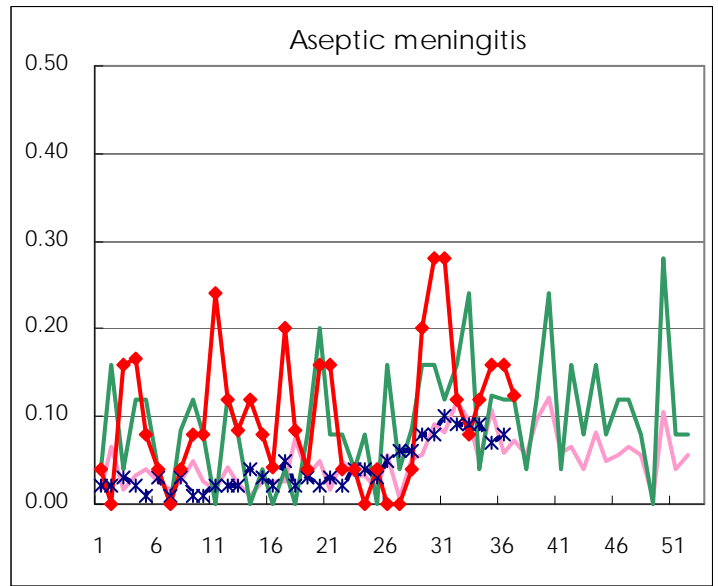
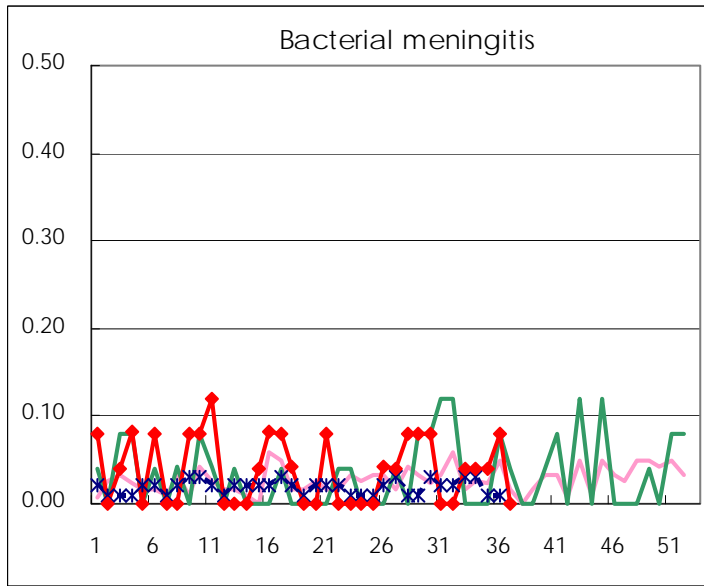
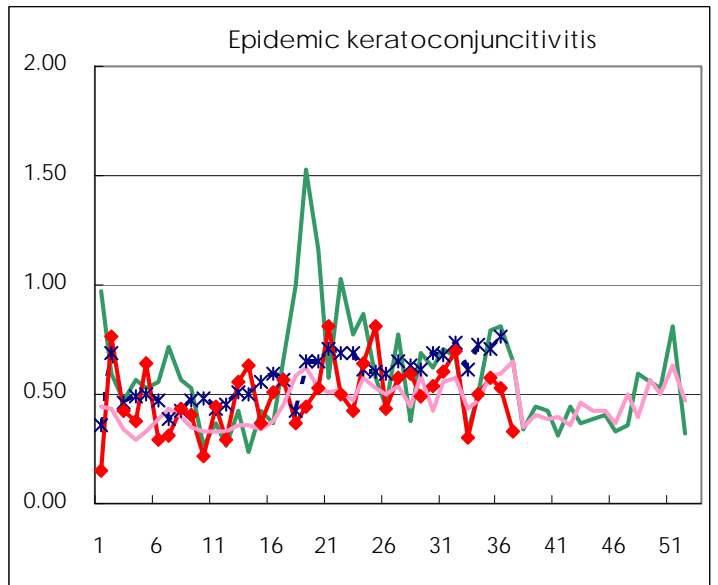
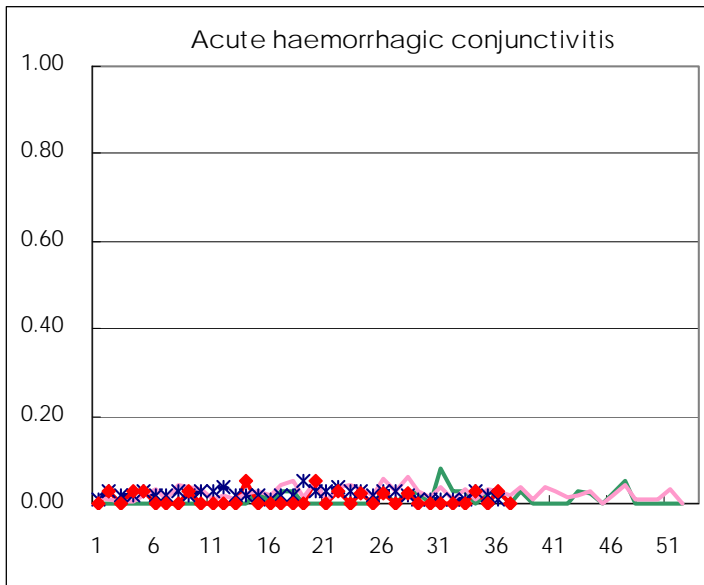
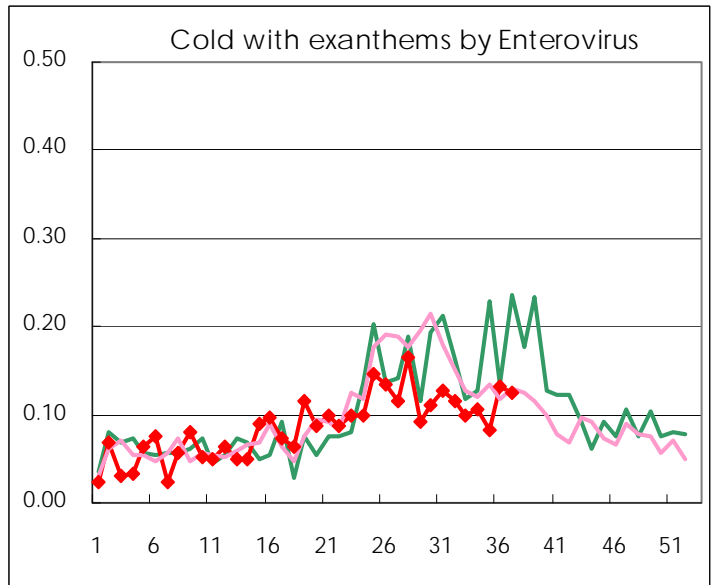
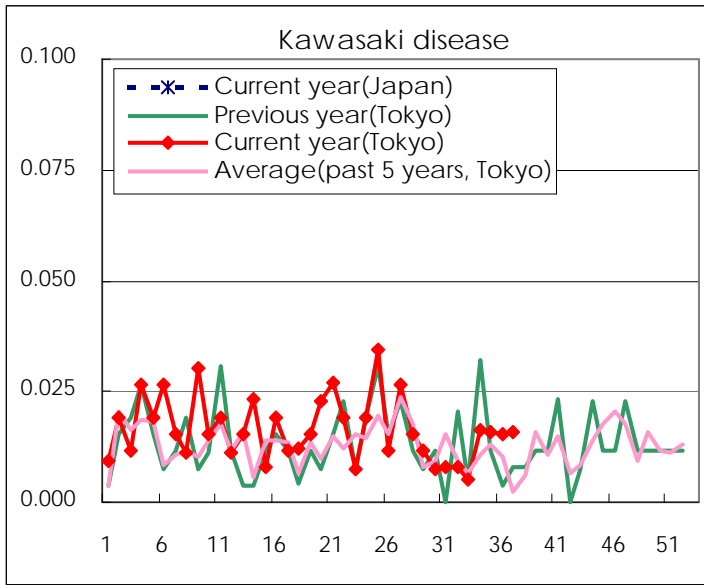
Diseases	Tokyo				
	34th	35th	36th	37th	/sentinel
Respiratory syncytial virus infection	78	146	212	302	1.19
Pharyngoconjunctival fever	92	112	140	127	0.50
Group A streptococcal pharyngitis	146	179	202	217	0.85
Infectious gastroenteritis	616	617	773	864	3.40
Chickenpox	127	78	112	129	0.51
Hand, foot, and mouth disease	1,136	943	737	738	2.91
Erythema infectiosum	15	17	8	16	0.06
Exanthem subitum	141	193	203	192	0.76
Pertussis		5	1	1	0.00
Herpangina	311	309	229	212	0.83
Mumps	49	48	58	45	0.18
Kawasaki disease	4	4	4	4	0.02
Cold with exanthems by Enterovirus	26	21	34	32	0.13
Influenza	3	1	2	4	0.01
Acute hemorrhagic conjunctivitis	1		1		
Epidemic keratoconjunctivitis	19	22	20	13	0.33
Bacterial meningitis	1	1	2		
Aseptic meningitis	3	4	4	3	0.13
Mycoplasma pneumonia	11	6	4	13	0.54
Chlamydial pneumonia (excluding psittacosis)		1		1	0.04
Influenza-Associated Hospitalizations					

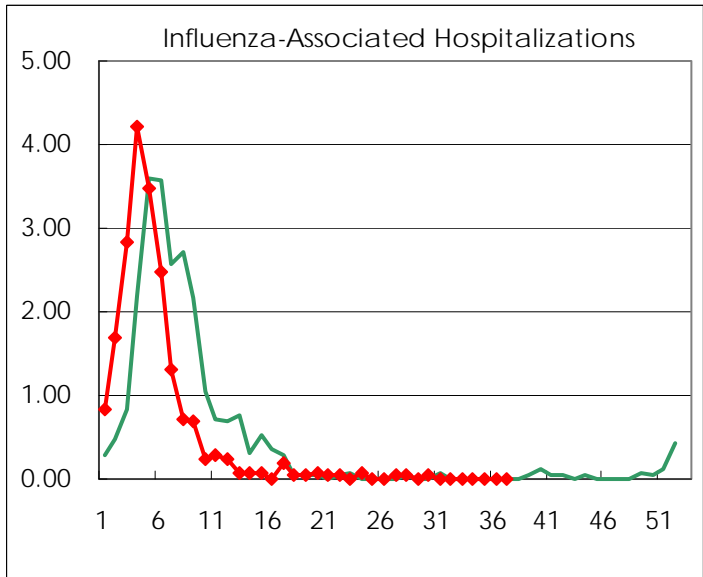
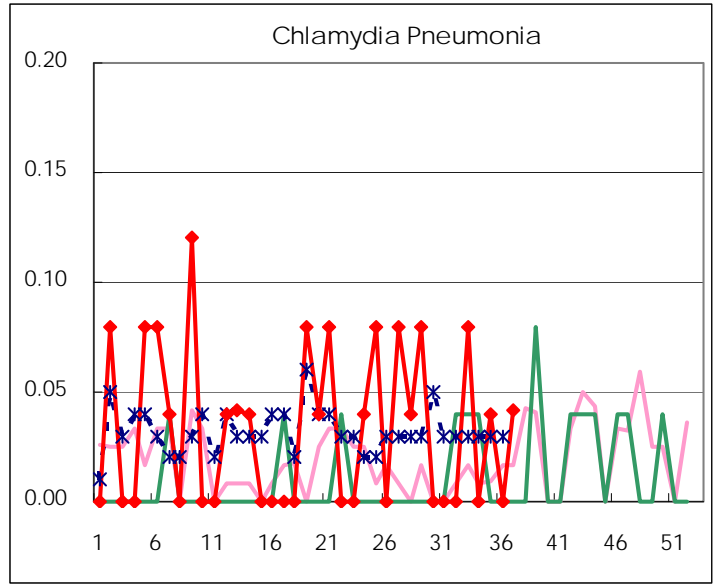
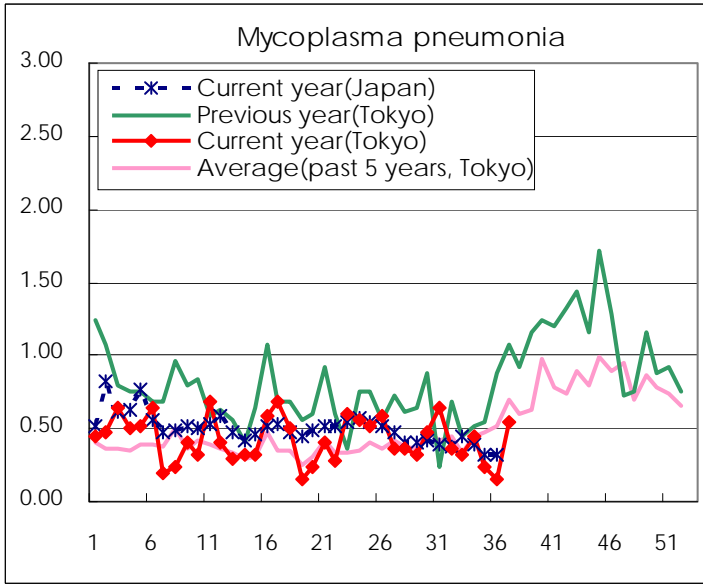
( Blank means 0. )

# Disease Trend Graph (weekly reported cases per sentinel in comparison)









Number of sentinel facilities for weekly reporting		
Types of sentinels	Number of sentinels	Sentinels having reported
Pediatric	264	254
Influenza	419	402
Ophthalmic	39	39
Specially-designated	25	24

Tokyo Metropolitan Government  
Infectious Disease Surveillance Center