
INFECTIOUS DISEASES WEEKLY REPORT

TOKYO IDWR

Tokyo Metropolitan Infectious Disease Surveillance Center

26 September 2013 / Number 38

Surveillance System in Tokyo, Japan

The infectious diseases which all physicians must report

All physicians must report to health centers the incidence of the diseases which are shown at page one. Health centers electronically report the individual cases to Tokyo Metropolitan Infectious Disease Surveillance Center.

The infectious diseases required to be reported by the sentinels

The numbers of patients who visit the sentinel clinics or hospitals during a week are reported to health centers in Tokyo. And they electronically report the numbers to Tokyo Metropolitan Infectious Disease Surveillance Center. We have about 500 sentinel clinics and hospitals in Tokyo.

1st Week is early January and 52nd Week is end of December.

Tokyo Metropolitan Institute of Public Health

TEL:81-3-3363-3213 FAX:81-3-5332-7365

e-mail:idsc@tokyo-eiken.go.jp

URL:idsc.tokyo-eiken.go.jp/

Number of patients with the diseases which all physicians must report

Category	Diseases	Tokyo					Japan	
		35th	36th	37th	38th	Cum 2013	38th	Cum 2013
I	Ebola hemorrhagic fever							
	Crimean-Congo hemorrhagic fever							
	Smallpox							
	South American hemorrhagic fever							
	Plague							
	Marburg disease							
	Lassa fever							
II	Acute poliomyelitis							1
	Tuberculosis	70	74	89	78	2,902	317	19,251
	Diphtheria							
	Severe Acute Respiratory Syndrome(SARS)							
	Avian influenza H5N1							
※	Avian influenza H7N9							
III	Cholera							2
	Shigellosis	3	3		3	28	4	112
	Enterohemorrhagic Escherichia coli infection	13	10	26	23	306	99	3,088
	Typhoid fever		1			14	2	46
	Paratyphoid fever					16		36
IV	Hepatitis E	1			1	24	2	90
	West Nile fever							
	Hepatitis A		1			17	1	100
	Echinococcosis							12
	Yellow fever							
	Psittacosis					2		8
	Omsk hemorrhagic fever							
	Relapsing fever							1
	Kyasanur forest disease							
	Q fever					3		3
	Rabies							
	Coccidioidomycosis					3		3
	Monkeypox							
	Severe Fever with Thrombocytopenia Syndrome							39
	Hemorrhagic fever with renal syndrome							
	Western equine encephalitis							
	Tick-borne encephalitis							
	Anthrax							
	Chikungunya fever					3	1	11
	Scrub typhus(Tsutsugamushi disease)		1			2		143
	Dengue fever	3	1	3	3	47	9	172
	Eastern equine encephalitis							
	Avian influenza (excluding H5N1 and H7N9)							
	Nipah virus infection							
	Japanese spotted fever						5	98
	Japanese encephalitis							1
	Hantavirus pulmonary syndrome							
	Herpes B virus infection							
	Glanders							
	Brucellosis							2
	Venezuelan equine encephalitis							
	Hendra virus infection							
	Epidemic typhus							
Botulism								
Malaria		1			7	2	37	
Tularemia								
Lyme disease	4		1		7		16	
Lyssavirus infection(excluding rabies)								
Rift valley fever								
Melioidosis					1		2	
Legionellosis	2	2	1	2	54	30	779	
Leptospirosis			1		3	3	17	
Rocky mountain spotted fever								

Category	Diseases	Tokyo					Japan	
		35th	36th	37th	38th	Cum 2013	38th	Cum 2013
V	Amebiasis	2	3	2	2	139	12	765
	Viral hepatitis(excluding hepatitis A and E)	1	2	3	1	59	2	207
	Acute encephalitis(excluding JE and WNE)		1	1		34		275
	Cryptosporidiosis					2		11
	Creutzfeldt-Jakob disease			1		12	2	151
	Severe invasive streptococcal infections(TSLS)	1	2			27	3	155
	Acquired immunodeficiency syndrome (AIDS)	8	14	15	7	346	17	1,104
	Giardiasis	2			2	17	2	61
	Invasive <i>Haemophilus influenzae</i> disease	1				7	2	72
	Invasive meningococcal disease		1	1		9		18
	Invasive pneumococcal disease			1	2	64	4	573
	Meningococcal meningitis	/	/	/	/			2
	Congenital rubella syndrome	1				8		14
	Syphilis	12	9	13	4	311	15	877
	Tetanus			1		4		101
	Vancomycin-resistant <i>S. aureus</i> infection							
	Vancomycin-resistant <i>Enterococcus</i> infection					7		43
	Rubella	18	10	11	12	3,374	28	14,077
	Measles			1		59	1	206

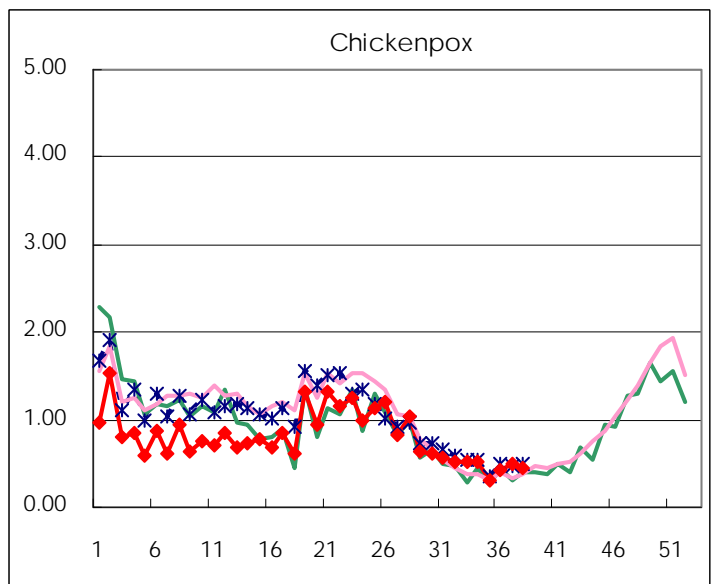
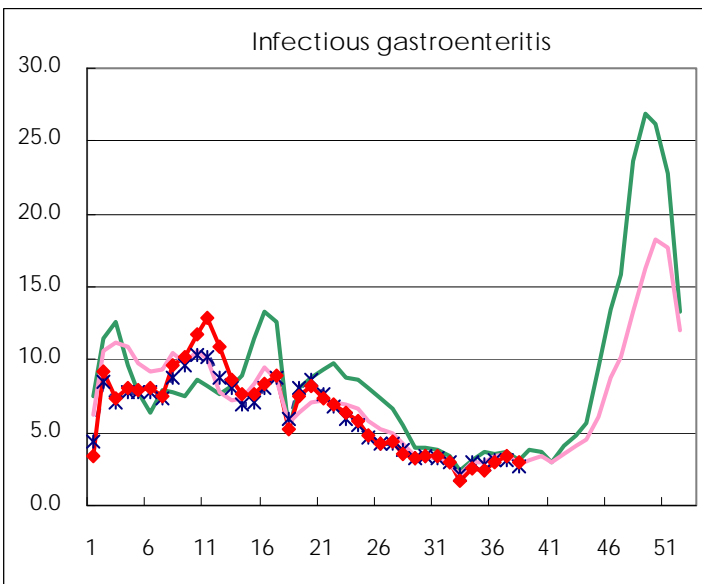
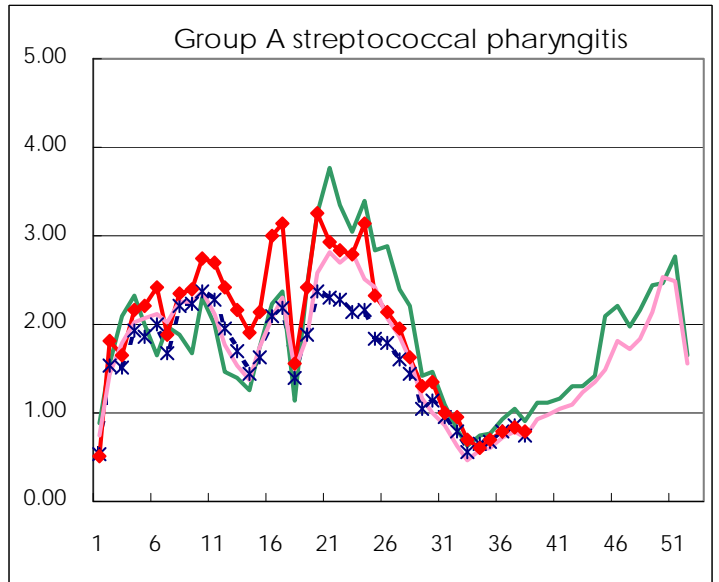
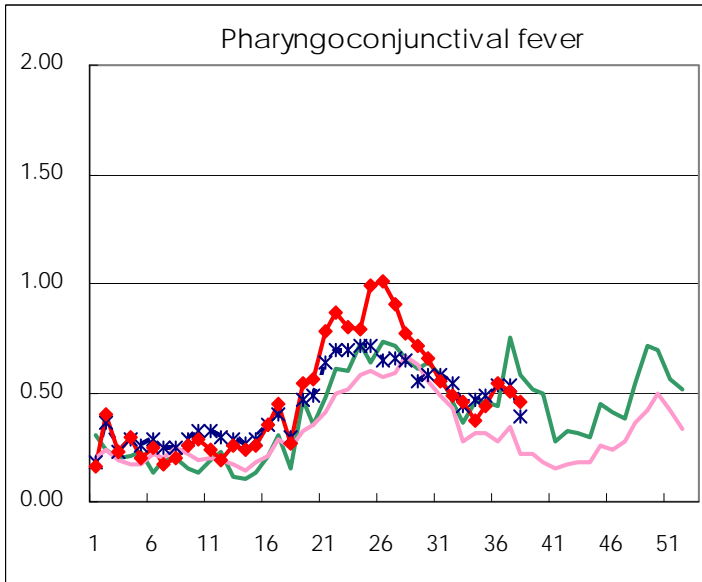
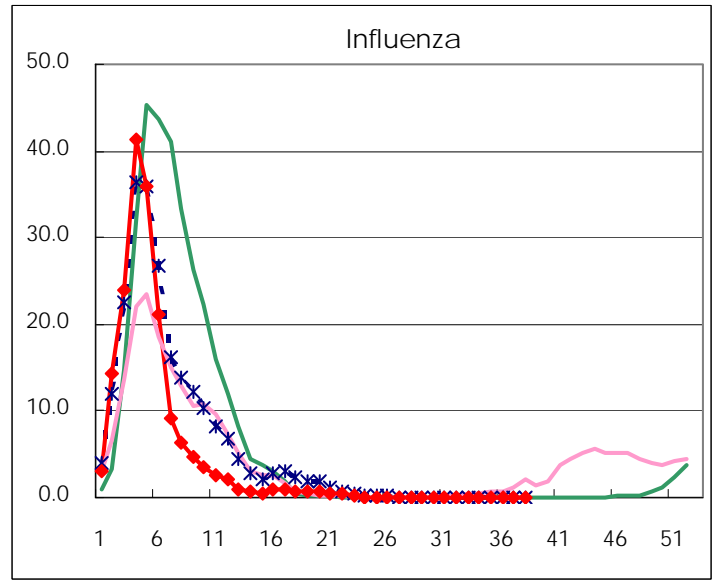
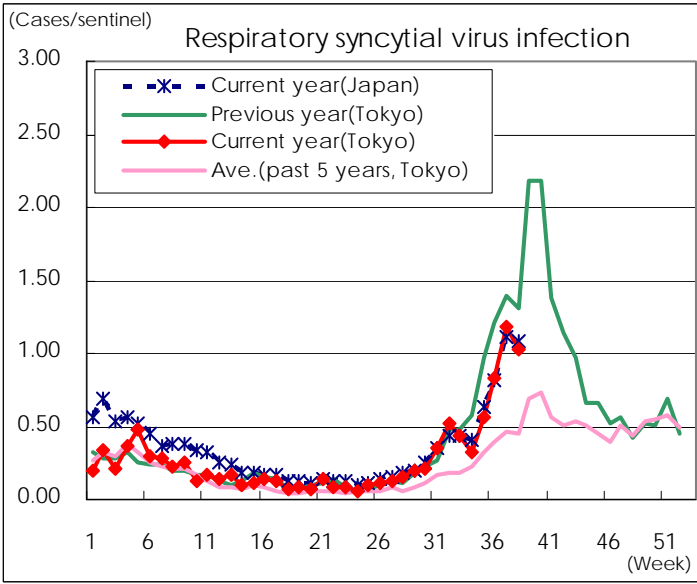
※ Designated infectious disease

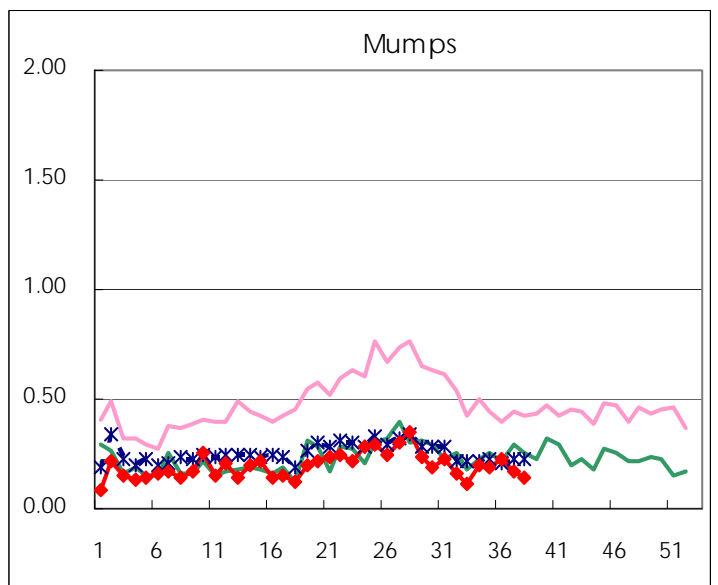
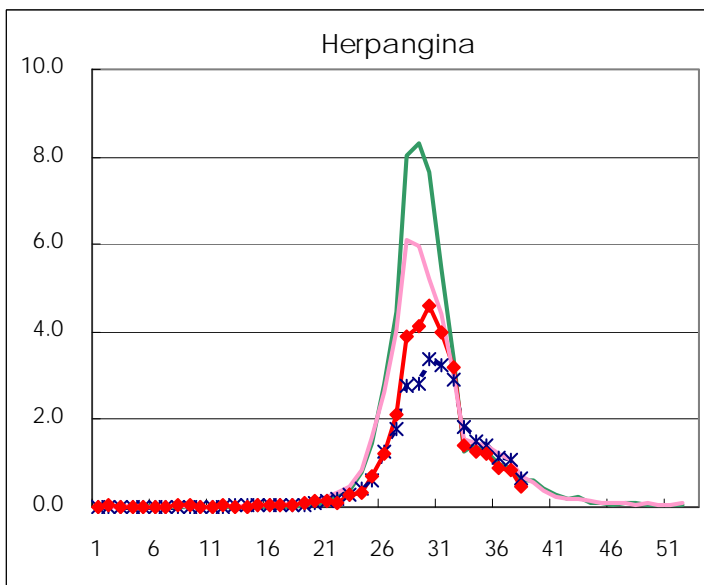
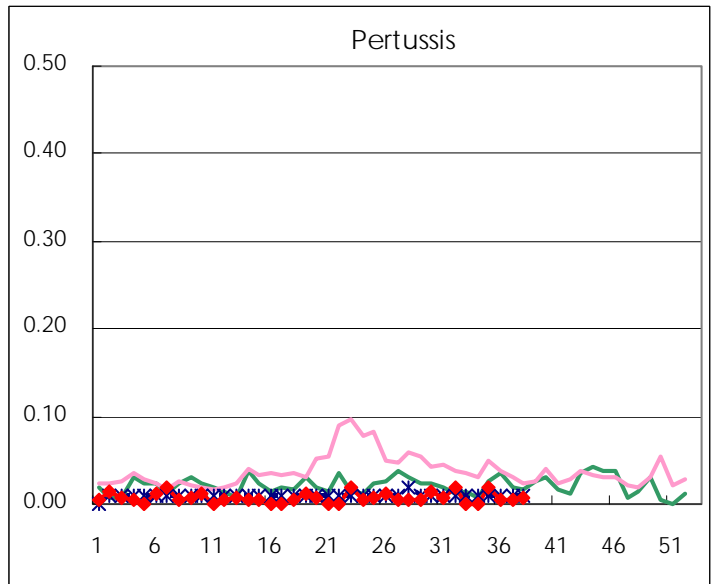
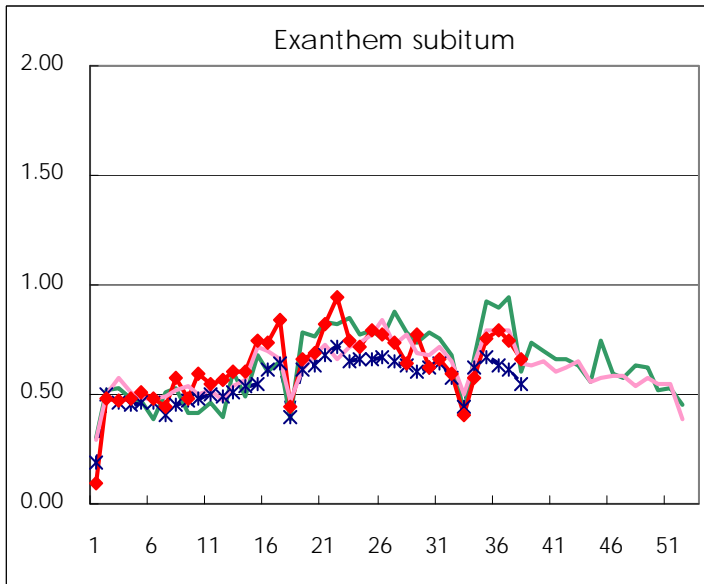
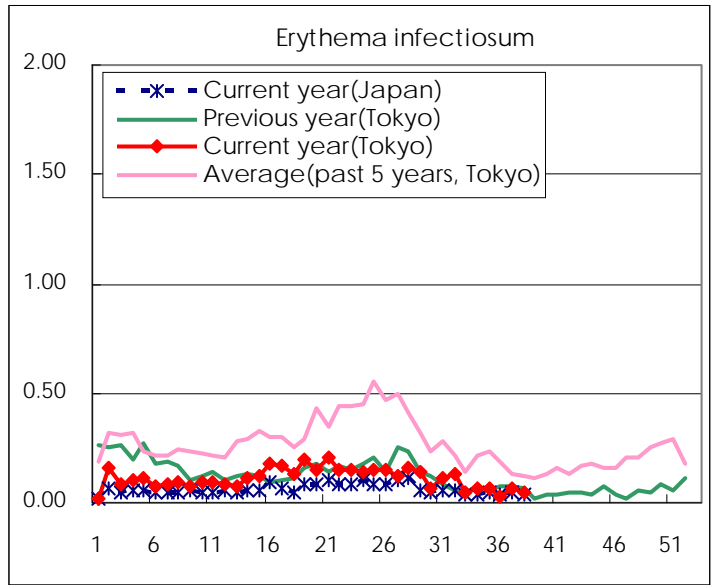
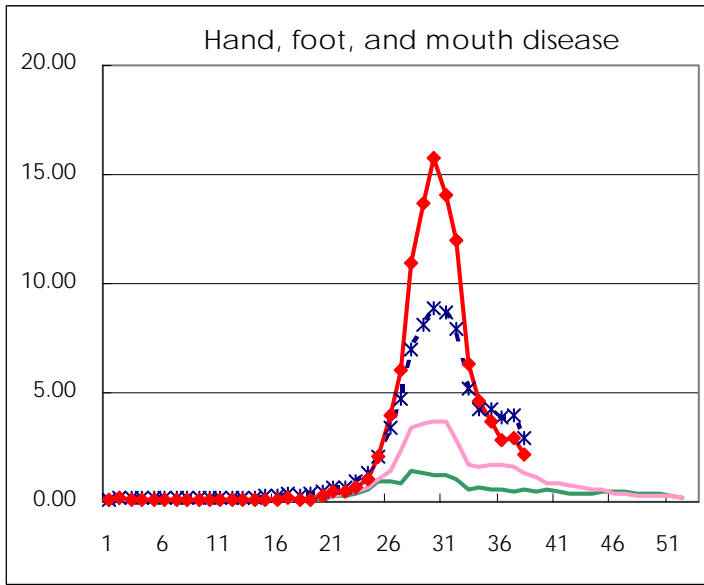
Number of patients with the diseases to be reported
by the designated clinics and hospitals

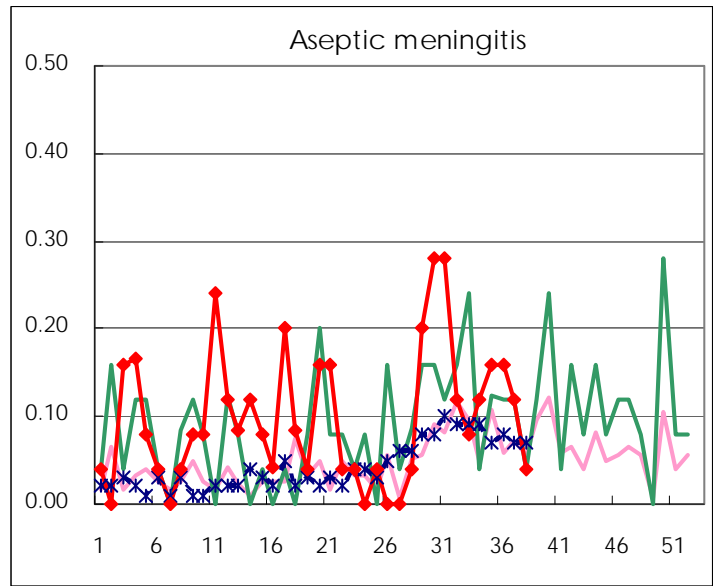
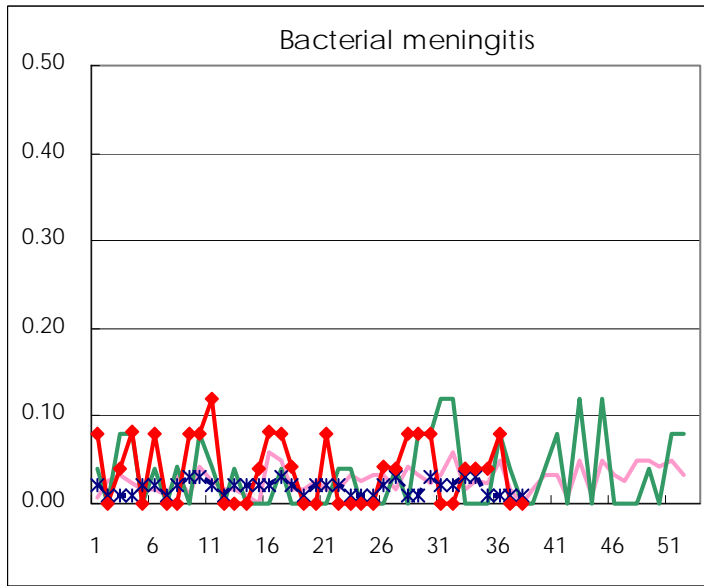
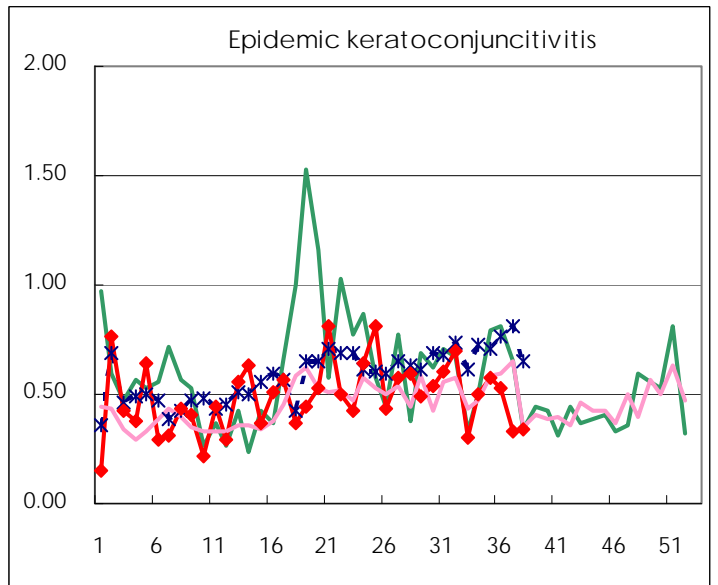
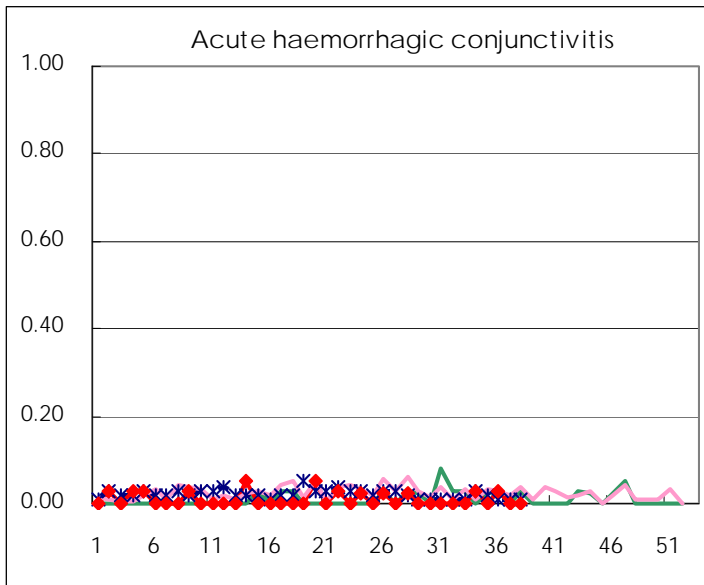
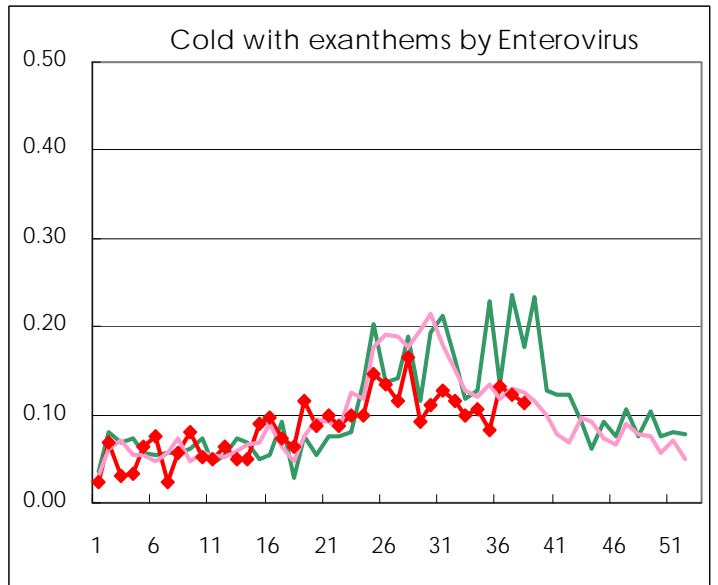
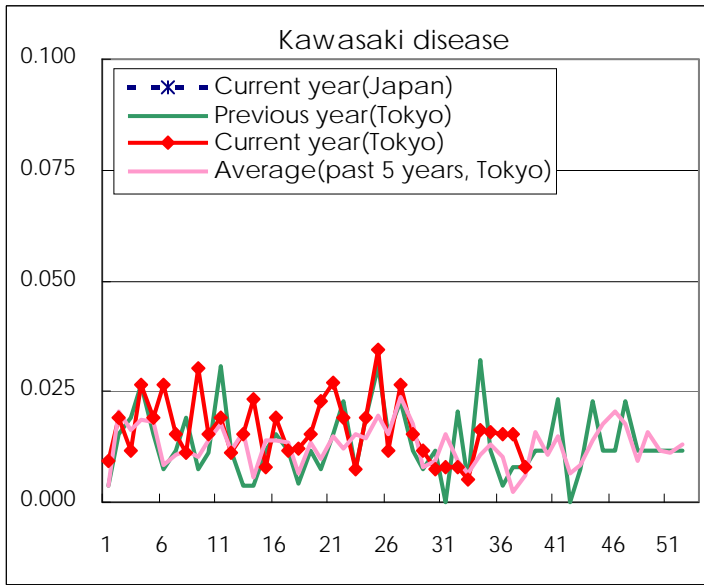
Diseases	Tokyo				
	35th	36th	37th	38th	/sentinel
Respiratory syncytial virus infection	146	212	308	263	1.03
Pharyngoconjunctival fever	112	140	130	117	0.46
Group A streptococcal pharyngitis	179	202	218	200	0.78
Infectious gastroenteritis	617	773	864	753	2.95
Chickenpox	78	112	130	115	0.45
Hand, foot, and mouth disease	943	737	766	553	2.17
Erythema infectiosum	17	8	16	12	0.05
Exanthem subitum	193	203	194	168	0.66
Pertussis	5	1	1	2	0.01
Herpangina	309	229	216	121	0.47
Mumps	48	58	45	37	0.15
Kawasaki disease	4	4	4	2	0.01
Cold with exanthems by Enterovirus	21	34	32	29	0.11
Influenza	1	2	4	1	0.00
Acute hemorrhagic conjunctivitis		1			
Epidemic keratoconjunctivitis	22	20	13	13	0.34
Bacterial meningitis	1	2			
Aseptic meningitis	4	4	3	1	0.04
Mycoplasma pneumonia	6	4	13	7	0.28
Chlamydial pneumonia (excluding psittacosis)	1		1		
Influenza-Associated Hospitalizations					

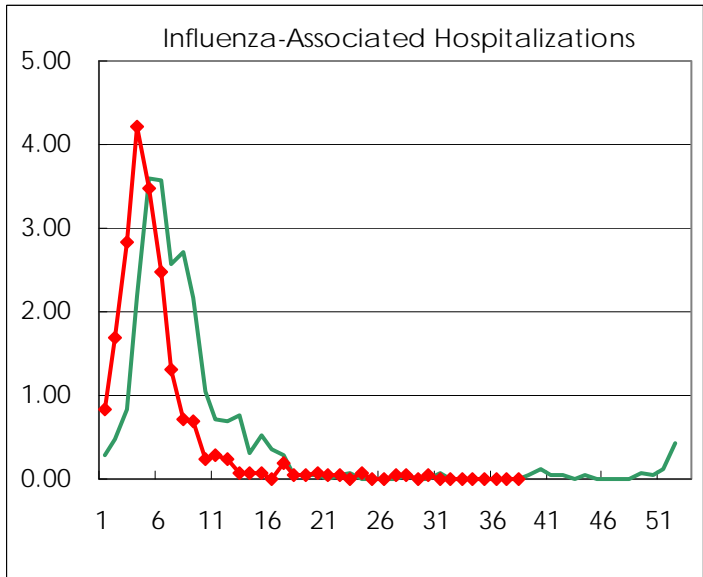
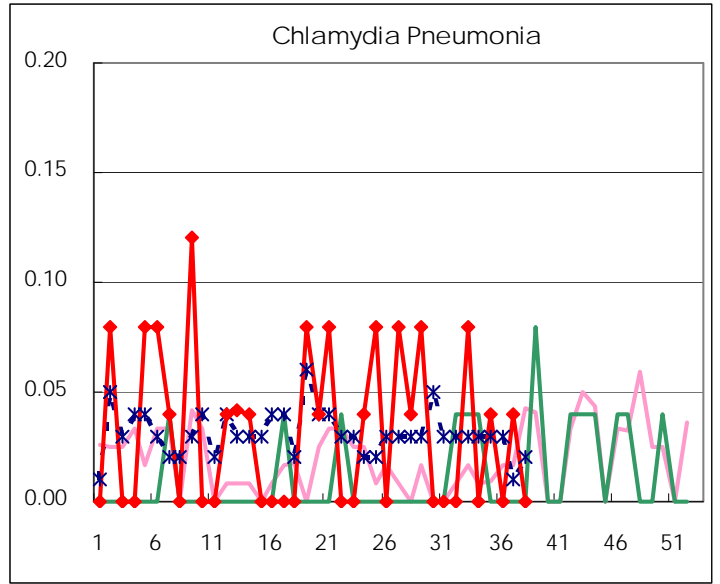
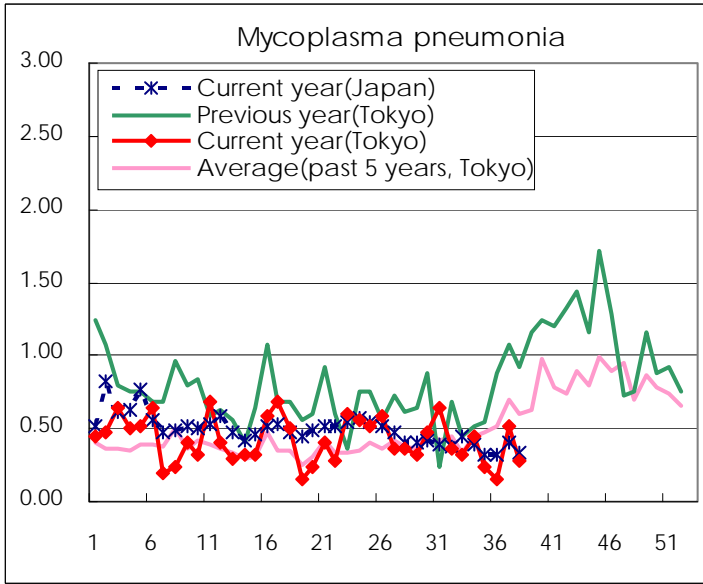
(Blank means 0.)

Disease Trend Graph (weekly reported cases per sentinel in comparison)









Number of sentinel facilities for weekly reporting		
Types of sentinels	Number of sentinels	Sentinels having reported
Pediatric	264	255
Influenza	419	405
Ophthalmic	39	38
Specially-designated	25	25

Tokyo Metropolitan Government
Infectious Disease Surveillance Center