
INFECTIOUS DISEASES WEEKLY REPORT

TOKYO IDWR

Tokyo Metropolitan Infectious Disease Surveillance Center

10 October 2013 / Number 40

Surveillance System in Tokyo, Japan

The infectious diseases which all physicians must report

All physicians must report to health centers the incidence of the diseases which are shown at page one. Health centers electronically report the individual cases to Tokyo Metropolitan Infectious Disease Surveillance Center.

The infectious diseases required to be reported by the sentinels

The numbers of patients who visit the sentinel clinics or hospitals during a week are reported to health centers in Tokyo. And they electronically report the numbers to Tokyo Metropolitan Infectious Disease Surveillance Center. We have about 500 sentinel clinics and hospitals in Tokyo.

1st Week is early January and 52nd Week is end of December.

Tokyo Metropolitan Institute of Public Health

TEL:81-3-3363-3213 FAX:81-3-5332-7365

e-mail:idsc@tokyo-eiken.go.jp

URL:idsc.tokyo-eiken.go.jp/

Number of patients with the diseases which all physicians must report

Category	Diseases	Tokyo				Japan		
		37th	38th	39th	40th	Cum 2013	40th	Cum 2013
I	Ebola hemorrhagic fever							
	Crimean-Congo hemorrhagic fever							
	Smallpox							
	South American hemorrhagic fever							
	Plague							
	Marburg disease							
	Lassa fever							
II	Acute poliomyelitis							1
	Tuberculosis	96	82	64	78	3,054	382	20,299
	Diphtheria							
	Severe Acute Respiratory Syndrome(SARS)							
	Avian influenza H5N1							
※	Avian influenza H7N9							
III	Cholera							2
	Shigellosis		3		1	29	3	118
	Enterohemorrhagic Escherichia coli infection	26	26	10	9	328	74	3,288
	Typhoid fever			1		15	2	51
	Paratyphoid fever			1	1	18	1	41
IV	Hepatitis E		1			24	2	93
	West Nile fever							
	Hepatitis A			1		18	2	106
	Echinococcosis							12
	Yellow fever							
	Psittacosis					2		8
	Omsk hemorrhagic fever							
	Relapsing fever							1
	Kyasanur forest disease							
	Q fever					3	1	5
	Rabies							
	Coccidioidomycosis					3		3
	Monkeypox							
	Severe Fever with Thrombocytopenia Syndrome							39
	Hemorrhagic fever with renal syndrome							
	Western equine encephalitis							
	Tick-borne encephalitis							
	Anthrax							
	Chikungunya fever					3		11
	Scrub typhus(Tsutsugamushi disease)			1		3		144
	Dengue fever	3	3	2	7	56	8	192
	Eastern equine encephalitis							
	Avian influenza (excluding H5N1 and H7N9)							
	Nipah virus infection							
	Japanese spotted fever						6	109
	Japanese encephalitis						2	6
	Hantavirus pulmonary syndrome							
	Herpes B virus infection							
	Glanders							
	Brucellosis							2
	Venezuelan equine encephalitis							
	Hendra virus infection							
Epidemic typhus								
Botulism								
Malaria					7	1	37	
Tularemia								
Lyme disease	1				7		17	
Lyssavirus infection(excluding rabies)								
Rift valley fever								
Melioidosis					1	1	3	
Legionellosis	2	1	5		59	16	829	
Leptospirosis	1				3	1	19	
Rocky mountain spotted fever								

Category	Diseases	Tokyo					Japan	
		37th	38th	39th	40th	Cum 2013	40th	Cum 2013
V	Amebiasis	2	3	2	1	143	11	798
	Viral hepatitis(excluding hepatitis A and E)	3	1	1		60	2	222
	Acute encephalitis(excluding JE and WNE)	1			3	37	3	286
	Cryptosporidiosis			1		3		14
	Creutzfeldt-Jakob disease	1				12	2	158
	Severe invasive streptococcal infections(TSLS)					27	3	159
	Acquired immunodeficiency syndrome (AIDS)	15	7	15	10	371	17	1,172
	Giardiasis		2			17	1	65
	Invasive <i>Haemophilus influenzae</i> disease			2		9	1	76
	Invasive meningococcal disease	1				9		17
	Invasive pneumococcal disease	1	3	2	2	69	6	595
	Meningococcal meningitis	/	/	/	/			2
	Congenital rubella syndrome					8	1	16
	Syphilis	13	4	11	3	325	17	925
	Tetanus	1				4	3	107
	Vancomycin-resistant <i>S. aureus</i> infection							
	Vancomycin-resistant <i>Enterococcus</i> infection					7	1	45
	Rubella	11	12	10	8	3,392	25	14,145
	Measles	1				59		206

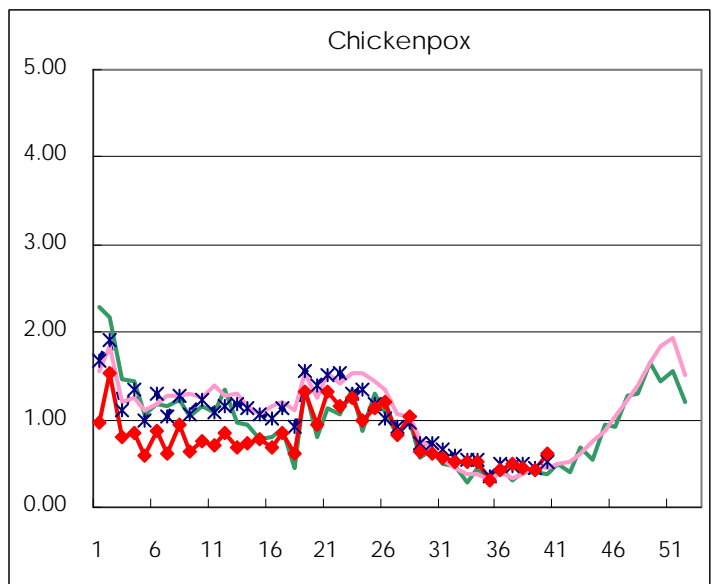
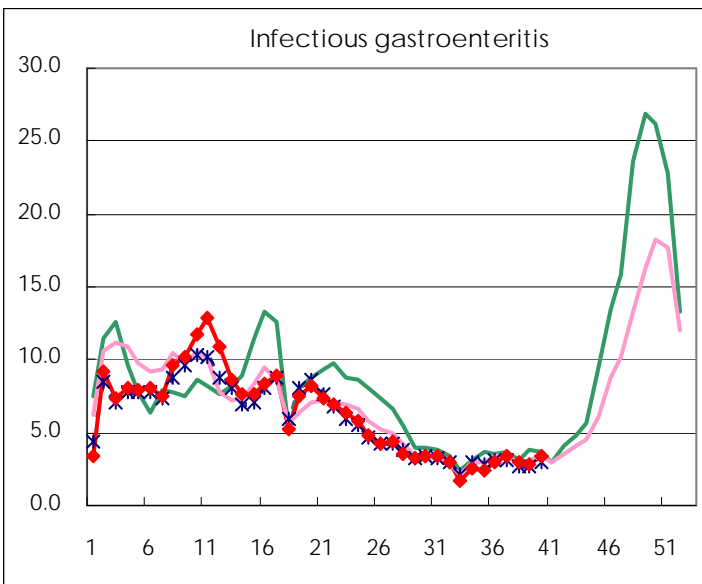
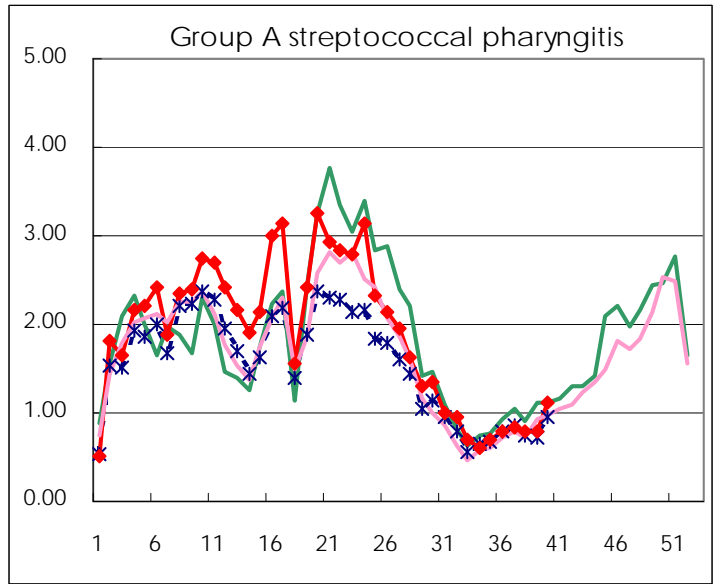
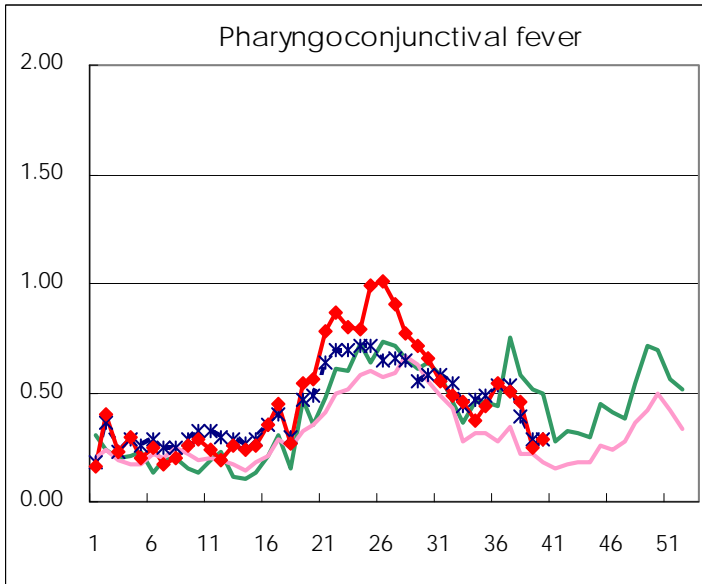
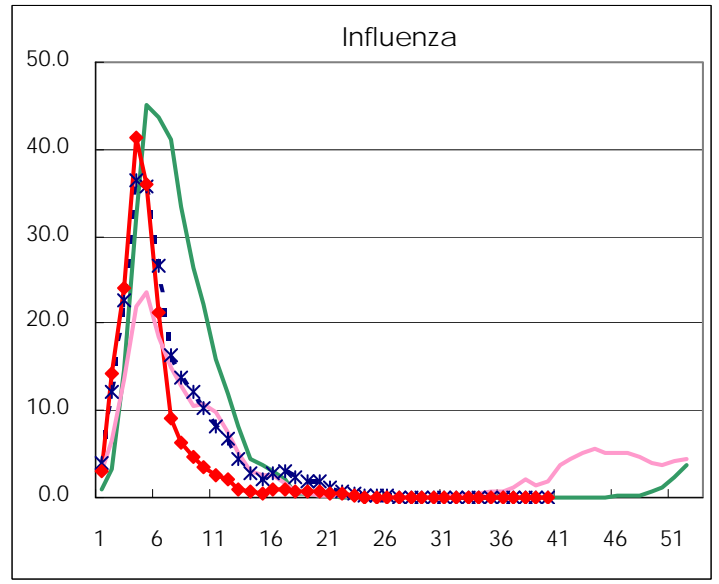
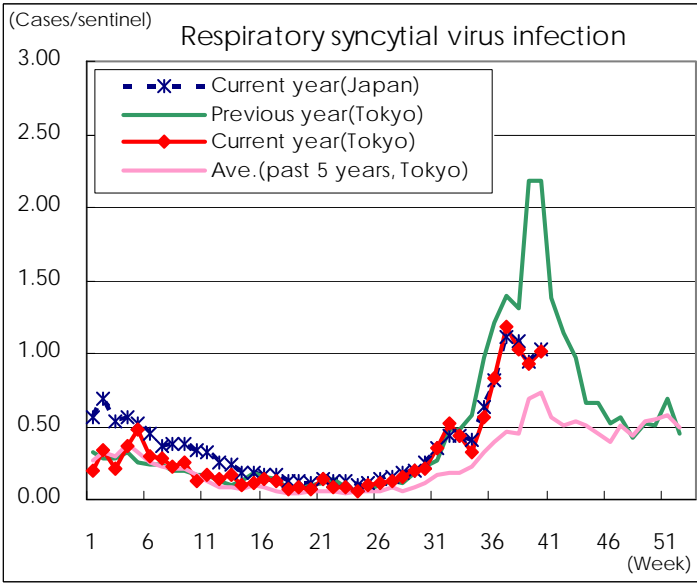
※ Designated infectious disease

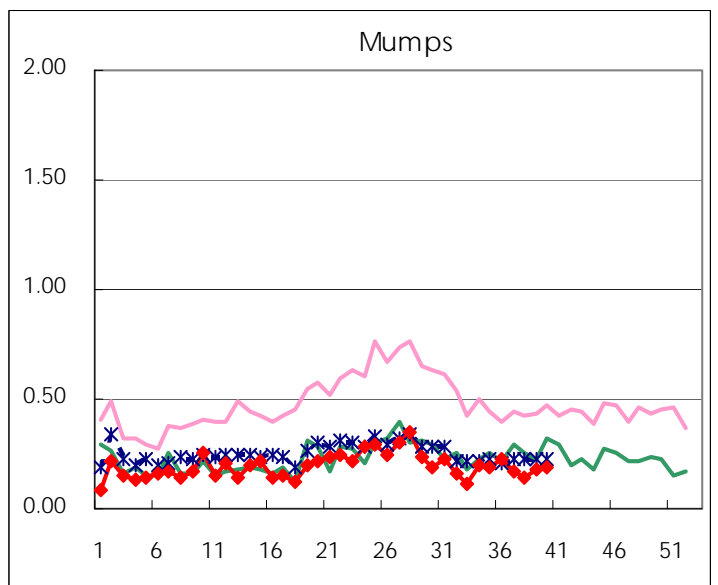
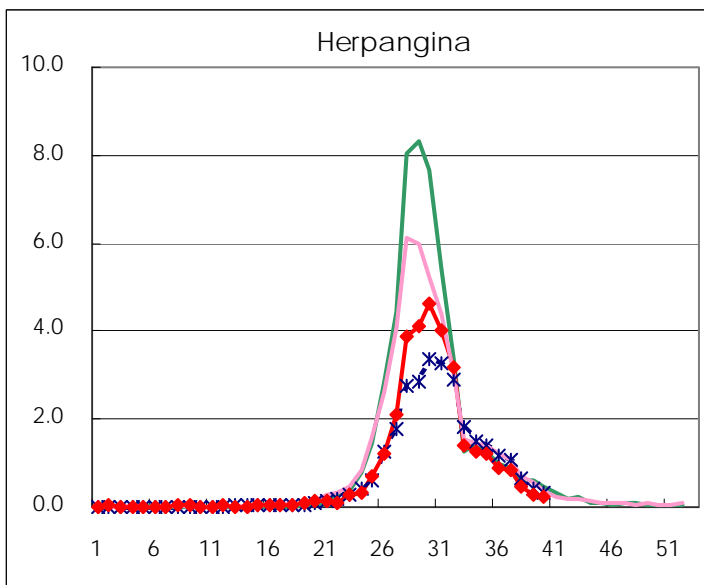
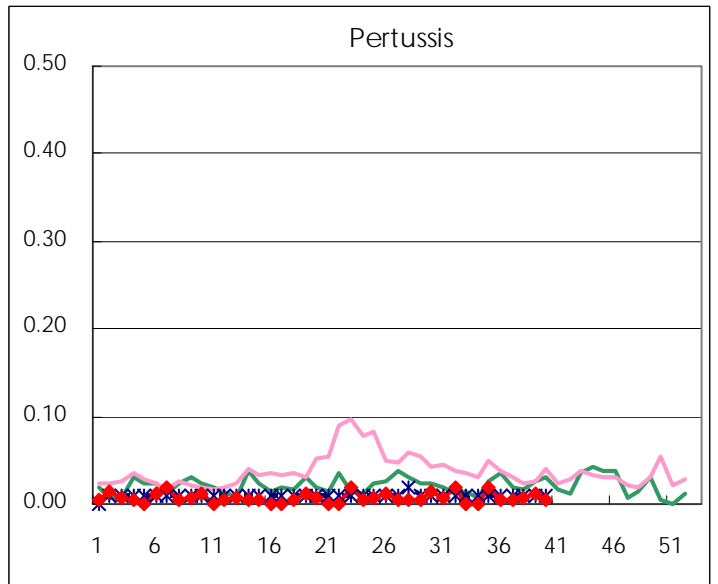
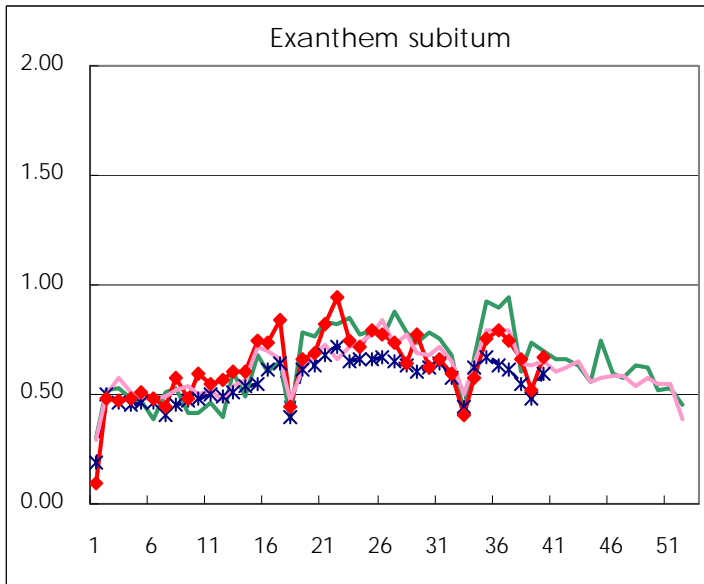
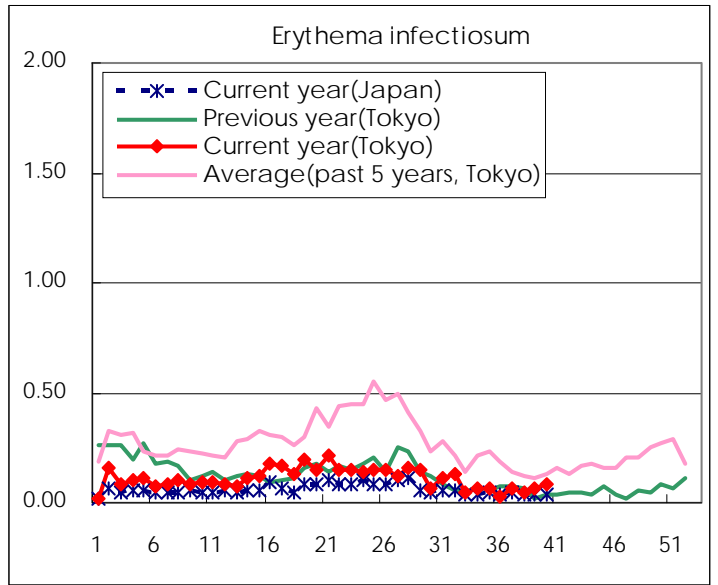
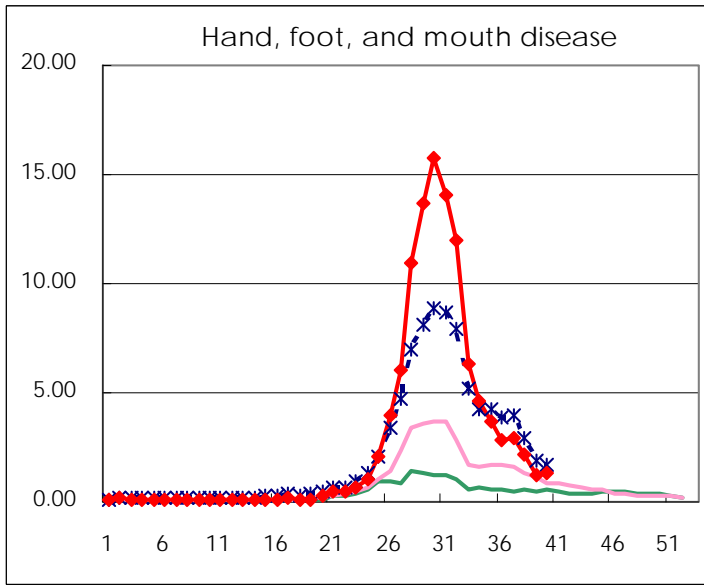
Number of patients with the diseases to be reported
by the designated clinics and hospitals

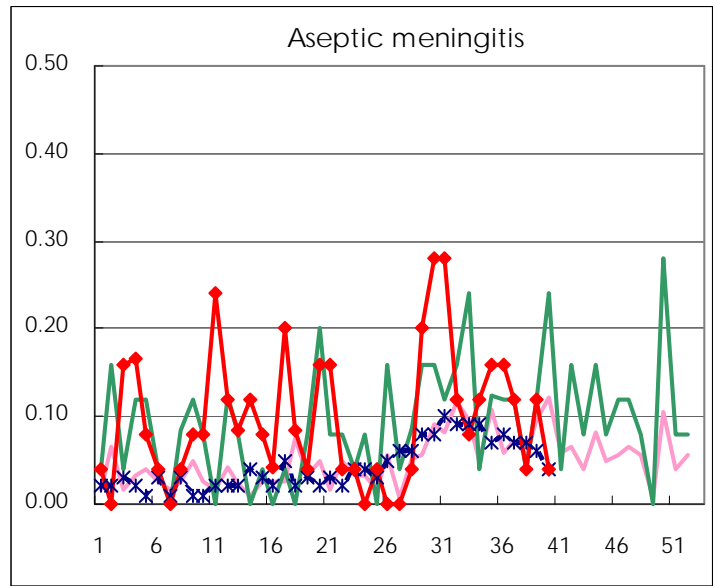
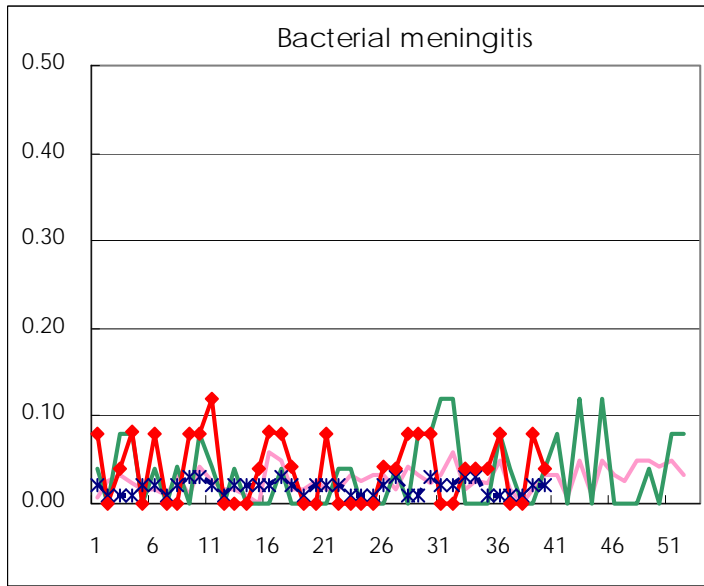
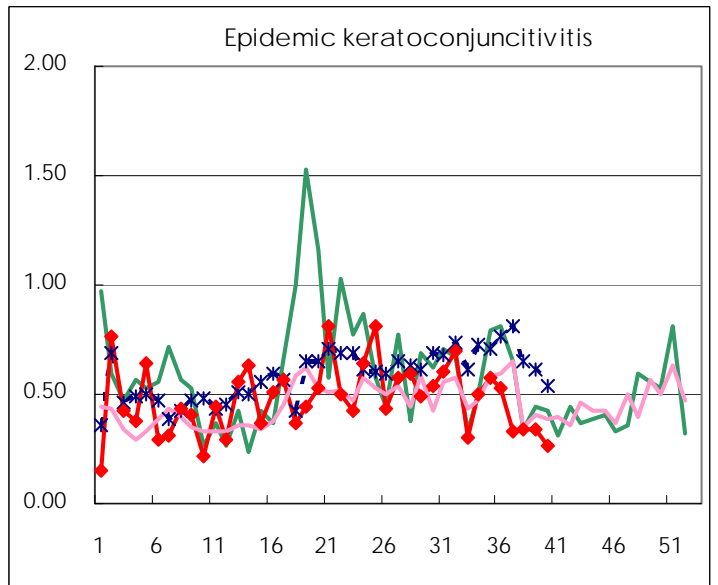
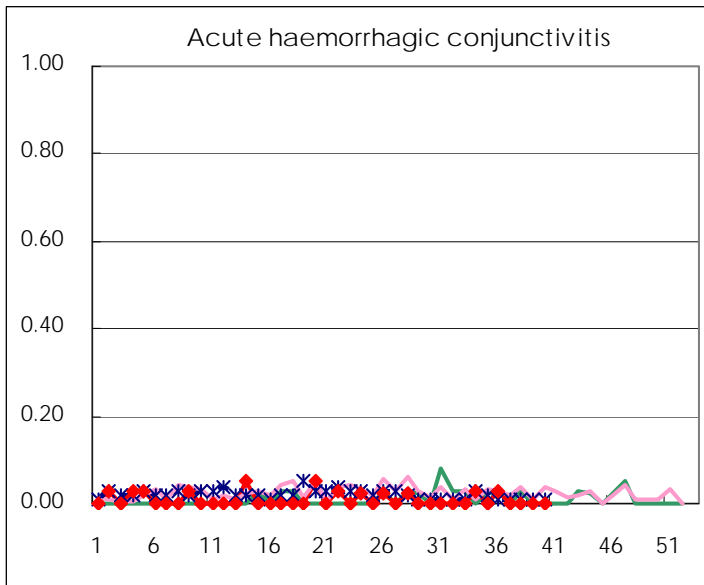
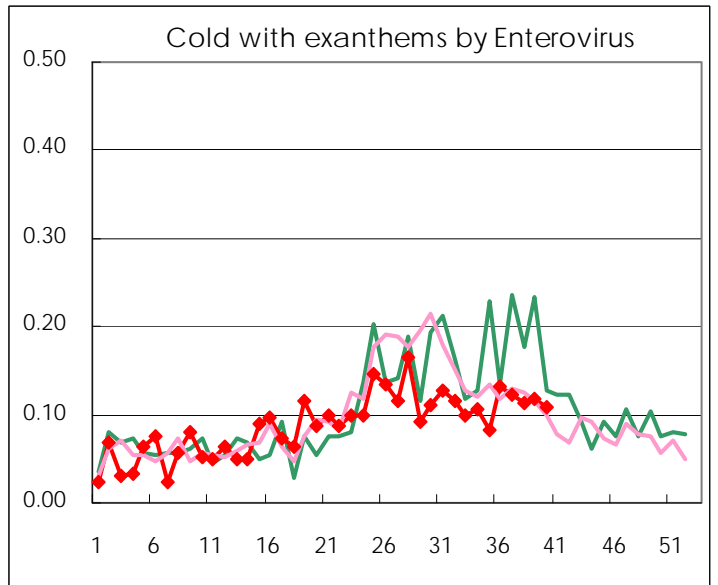
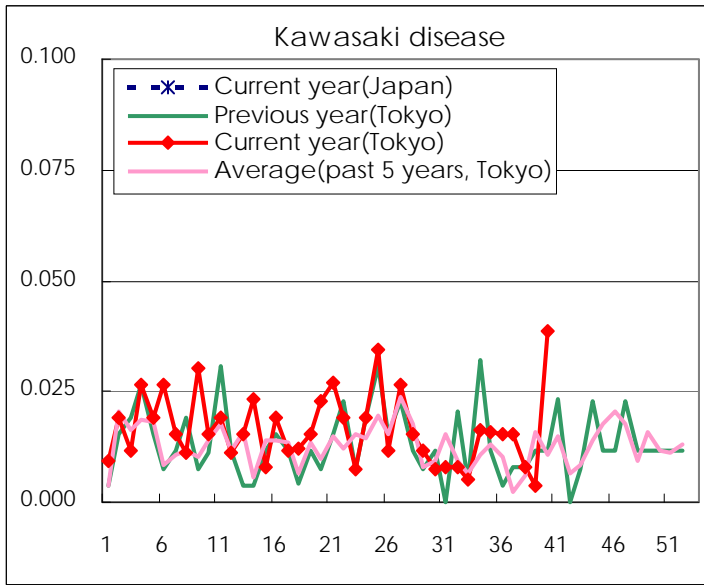
Diseases	Tokyo				
	37th	38th	39th	40th	/sentinel
Respiratory syncytial virus infection	308	263	245	263	1.01
Pharyngoconjunctival fever	130	117	66	74	0.28
Group A streptococcal pharyngitis	218	200	209	290	1.12
Infectious gastroenteritis	864	753	736	898	3.45
Chickenpox	130	115	112	162	0.62
Hand, foot, and mouth disease	766	558	325	350	1.35
Erythema infectiosum	16	12	16	21	0.08
Exanthem subitum	194	168	137	173	0.67
Pertussis	1	2	3	1	0.00
Herpangina	216	121	74	64	0.25
Mumps	45	37	48	49	0.19
Kawasaki disease	4	2	1	10	0.04
Cold with exanthems by Enterovirus	32	29	31	28	0.11
Influenza	4	1	1	4	0.01
Acute hemorrhagic conjunctivitis					
Epidemic keratoconjunctivitis	13	13	13	10	0.26
Bacterial meningitis			2	1	0.04
Aseptic meningitis	3	1	3	1	0.04
Mycoplasma pneumonia	13	7	6	7	0.28
Chlamydial pneumonia (excluding psittacosis)	1		1	1	0.04
Influenza-Associated Hospitalizations					

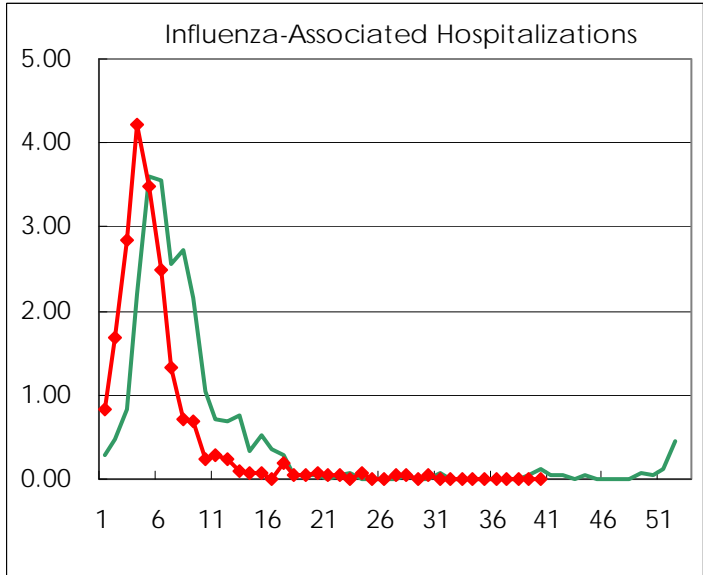
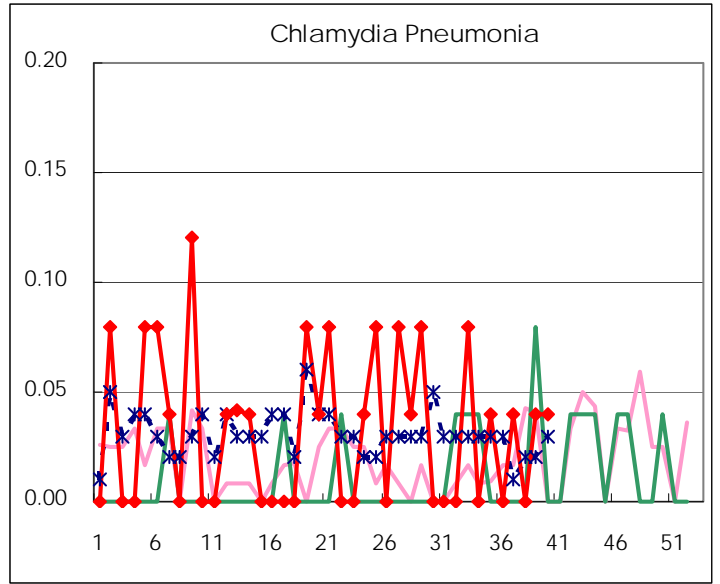
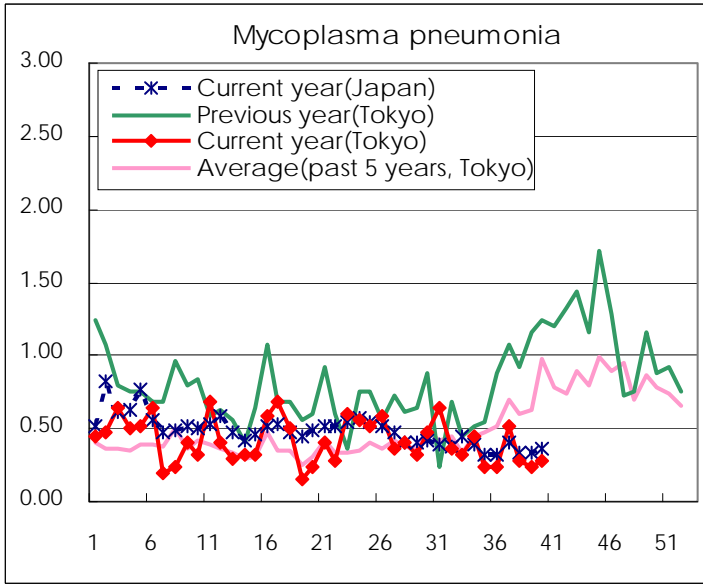
(Blank means 0.)

Disease Trend Graph (weekly reported cases per sentinel in comparison)









Number of sentinel facilities for weekly reporting		
Types of sentinels	Number of sentinels	Sentinels having reported
Pediatric	264	260
Influenza	419	411
Ophthalmic	39	38
Specially-designated	25	25

Tokyo Metropolitan Government
Infectious Disease Surveillance Center