
INFECTIOUS DISEASES WEEKLY REPORT

TOKYO IDWR

Tokyo Metropolitan Infectious Disease Surveillance Center

17 October 2013 / Number 41

Surveillance System in Tokyo, Japan

The infectious diseases which all physicians must report

All physicians must report to health centers the incidence of the diseases which are shown at page one. Health centers electronically report the individual cases to Tokyo Metropolitan Infectious Disease Surveillance Center.

The infectious diseases required to be reported by the sentinels

The numbers of patients who visit the sentinel clinics or hospitals during a week are reported to health centers in Tokyo. And they electronically report the numbers to Tokyo Metropolitan Infectious Disease Surveillance Center. We have about 500 sentinel clinics and hospitals in Tokyo.

1st Week is early January and 52nd Week is end of December.

Tokyo Metropolitan Institute of Public Health

TEL:81-3-3363-3213 FAX:81-3-5332-7365

e-mail:idsc@tokyo-eiken.go.jp

URL:idsc.tokyo-eiken.go.jp/

Number of patients with the diseases which all physicians must report

Category	Diseases	Tokyo					Japan	
		38th	39th	40th	41st	Cum 2013	41st	Cum 2013
I	Ebola hemorrhagic fever							
	Crimean-Congo hemorrhagic fever							
	Smallpox							
	South American hemorrhagic fever							
	Plague							
	Marburg disease							
	Lassa fever							
II	Acute poliomyelitis							1
	Tuberculosis	82	65	78	89	3,144	387	20,807
	Diphtheria							
	Severe Acute Respiratory Syndrome(SARS)							
	Avian influenza H5N1							
※	Avian influenza H7N9							
III	Cholera							2
	Shigellosis	3		1		29	2	120
	Enterohemorrhagic Escherichia coli infection	26	10	9	3	331	67	3,368
	Typhoid fever		1		3	18	3	54
	Paratyphoid fever		1	1		18	1	42
IV	Hepatitis E	1			1	25	1	93
	West Nile fever							
	Hepatitis A		1			18	1	107
	Echinococcosis							12
	Yellow fever							
	Psittacosis					2		8
	Omsk hemorrhagic fever							
	Relapsing fever							1
	Kyasanur forest disease							
	Q fever					3		5
	Rabies							
	Coccidioidomycosis					3		3
	Monkeypox							
	Severe Fever with Thrombocytopenia Syndrome						1	40
	Hemorrhagic fever with renal syndrome							
	Western equine encephalitis							
	Tick-borne encephalitis							
	Anthrax							
	Chikungunya fever					3		11
	Scrub typhus(Tsutsugamushi disease)		1		1	4	1	146
	Dengue fever	3	2	7	2	58	10	203
	Eastern equine encephalitis							
	Avian influenza (excluding H5N1 and H7N9)							
	Nipah virus infection							
	Japanese spotted fever						6	118
	Japanese encephalitis						1	7
	Hantavirus pulmonary syndrome							
	Herpes B virus infection							
	Glanders							
	Brucellosis							2
	Venezuelan equine encephalitis							
	Hendra virus infection							
Epidemic typhus								
Botulism								
Malaria					7	1	38	
Tularemia								
Lyme disease					7		17	
Lyssavirus infection(excluding rabies)								
Rift valley fever								
Melioidosis					1	1	4	
Legionellosis	1	5	1	4	64	20	858	
Leptospirosis					3		19	
Rocky mountain spotted fever								

Category	Diseases	Tokyo				Japan		
		38th	39th	40th	41st	Cum 2013	41st	Cum 2013
V	Amebiasis	3	2	1	4	147	10	816
	Viral hepatitis(excluding hepatitis A and E)	1	1		1	61	2	224
	Acute encephalitis(excluding JE and WNE)			3	1	38	2	289
	Cryptosporidiosis		1		2	5	2	16
	Creutzfeldt-Jakob disease					12		162
	Severe invasive streptococcal infections(TSLS)				1	28	2	161
	Acquired immunodeficiency syndrome (AIDS)	7	15	10	12	383	17	1,204
	Giardiasis	2			2	19	2	67
	Invasive <i>Haemophilus influenzae</i> disease		2			9		80
	Invasive meningococcal disease					9		16
	Invasive pneumococcal disease	3	2	2		69	6	604
	Meningococcal meningitis	/	/	/	/		/	2
	Congenital rubella syndrome					8		16
	Syphilis	4	11	3	10	335	16	945
	Tetanus					4		107
	Vancomycin-resistant <i>S. aureus</i> infection							
	Vancomycin-resistant <i>Enterococcus</i> infection					7		45
	Rubella	12	10	8	7	3,399	17	14,171
	Measles					59	1	207

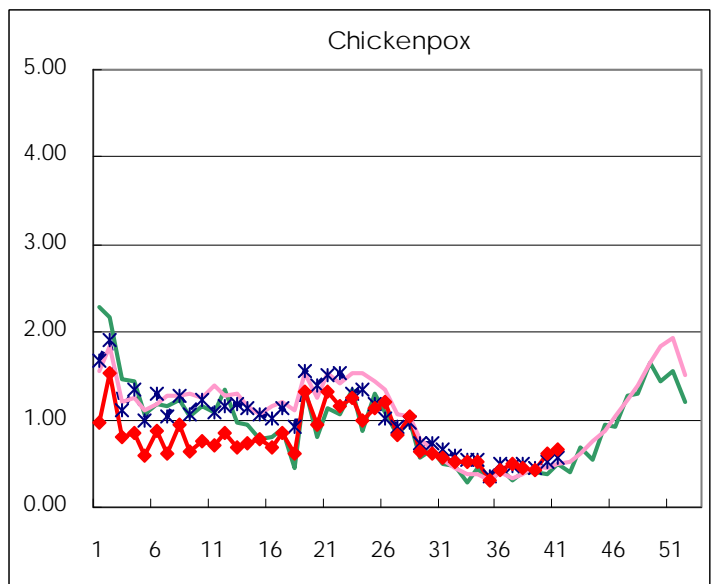
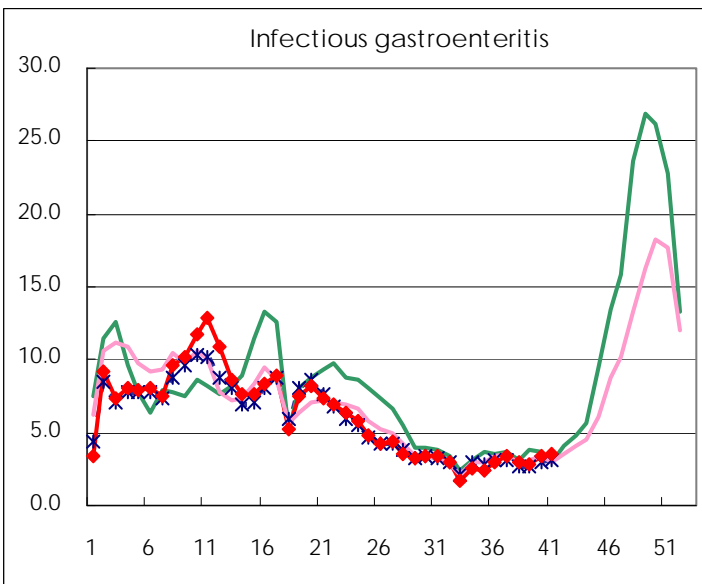
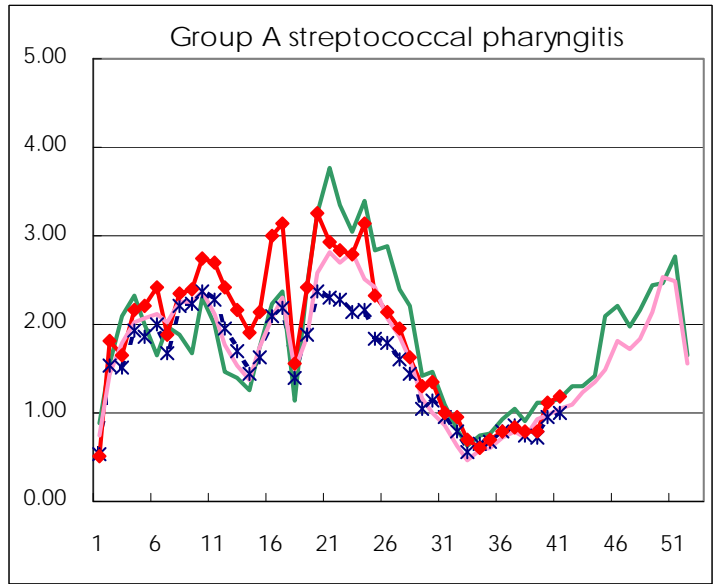
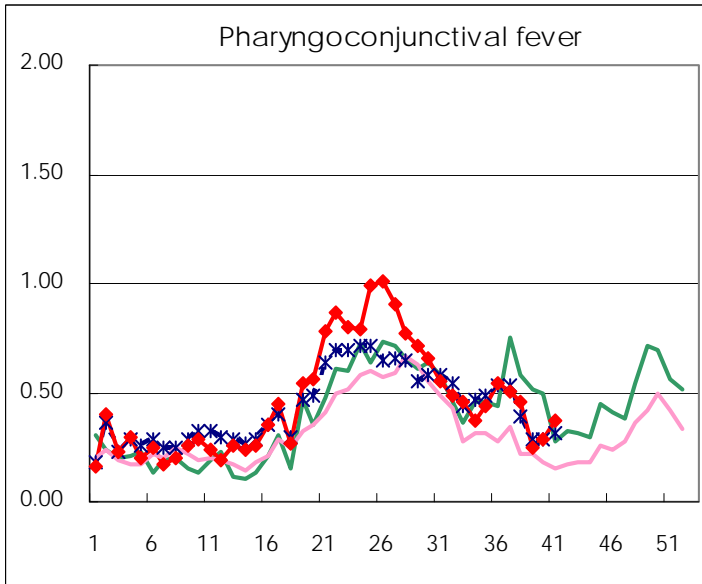
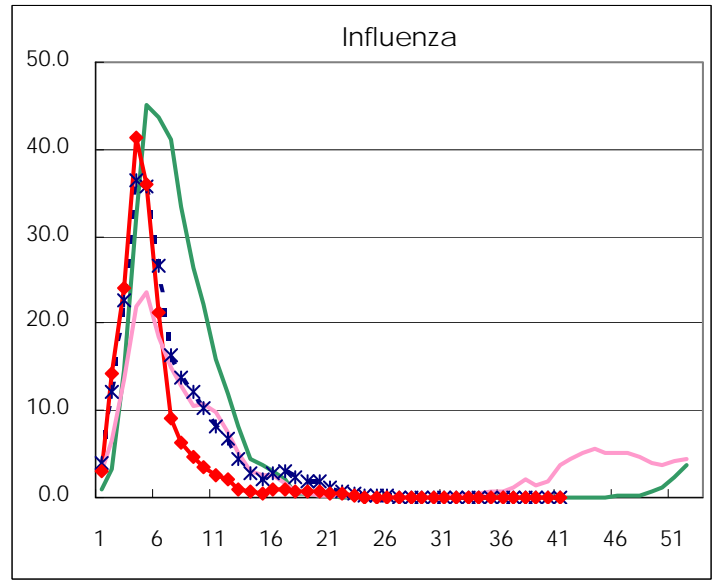
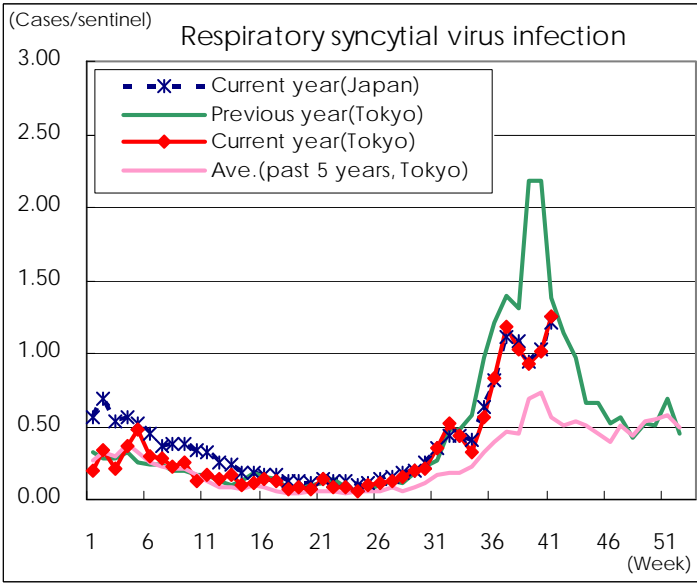
※ Designated infectious disease

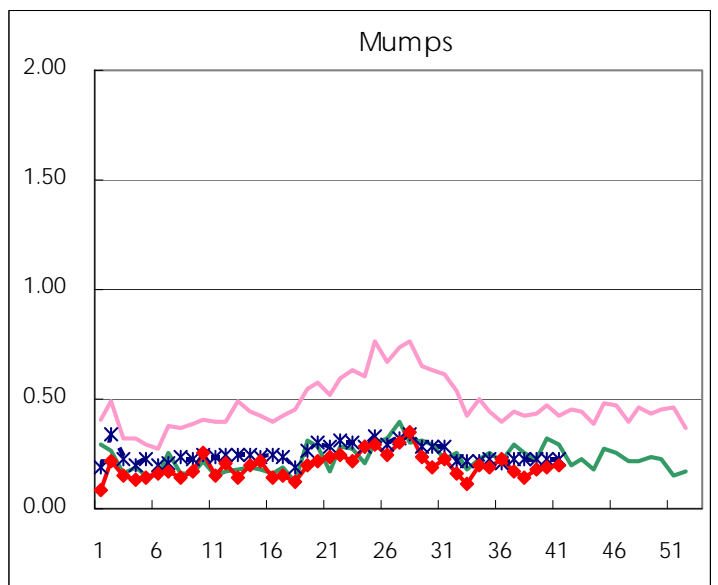
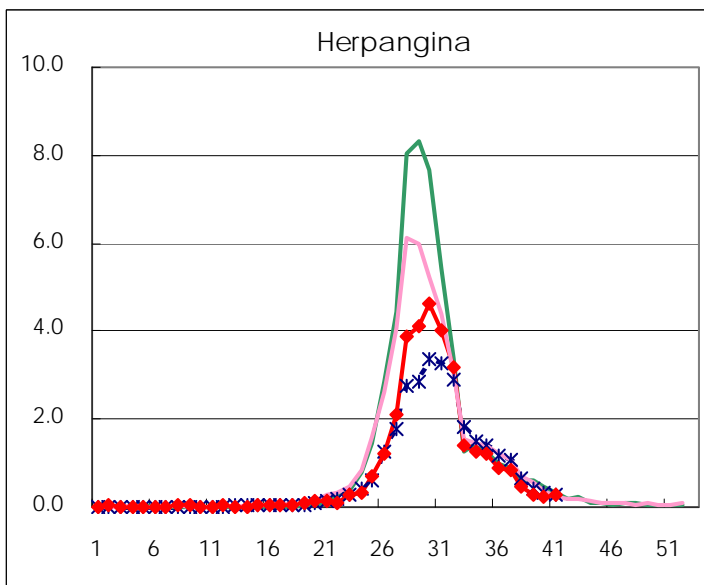
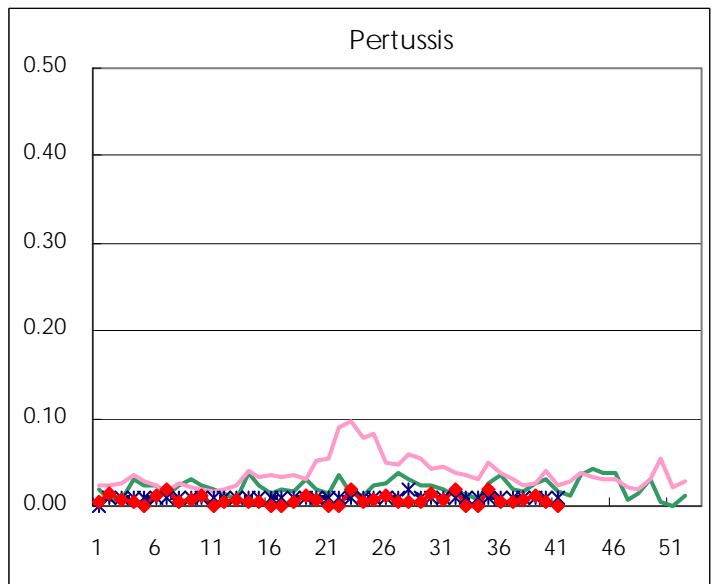
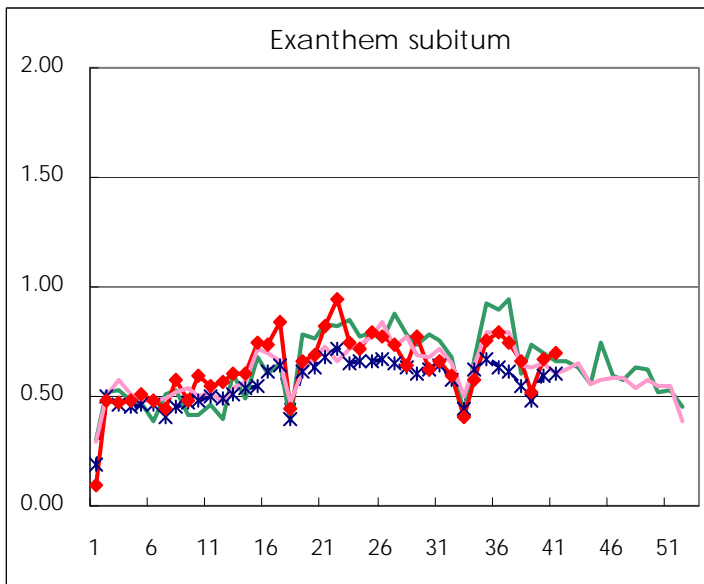
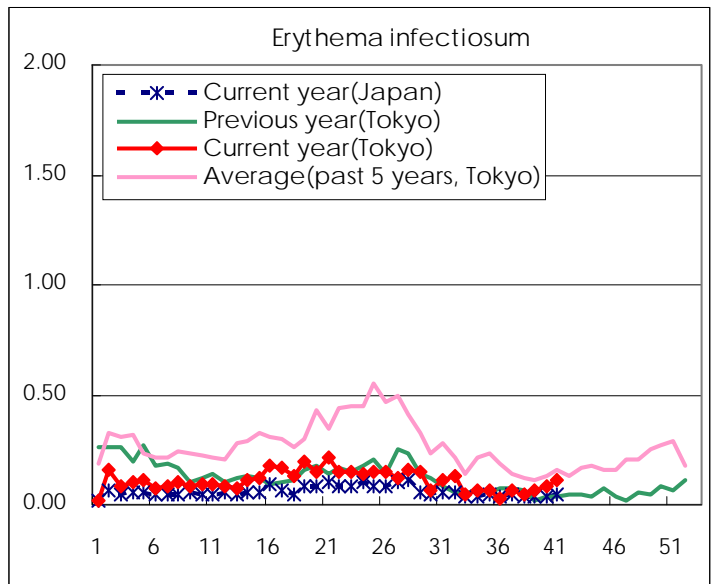
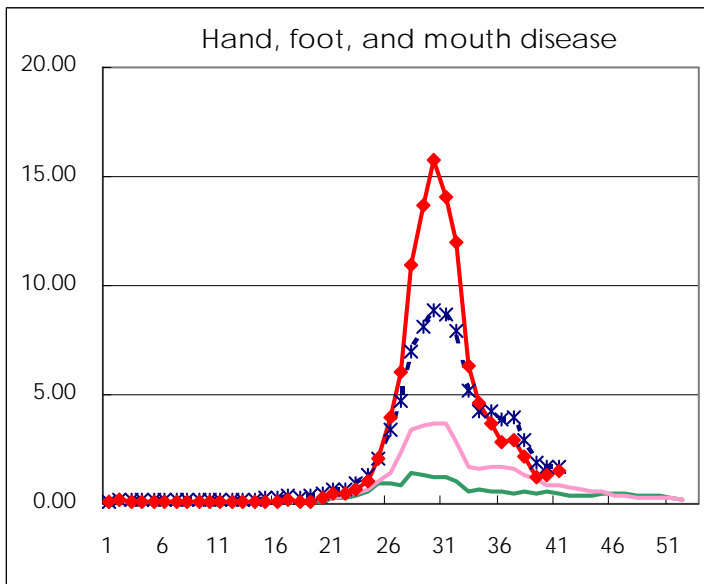
Number of patients with the diseases to be reported
by the designated clinics and hospitals

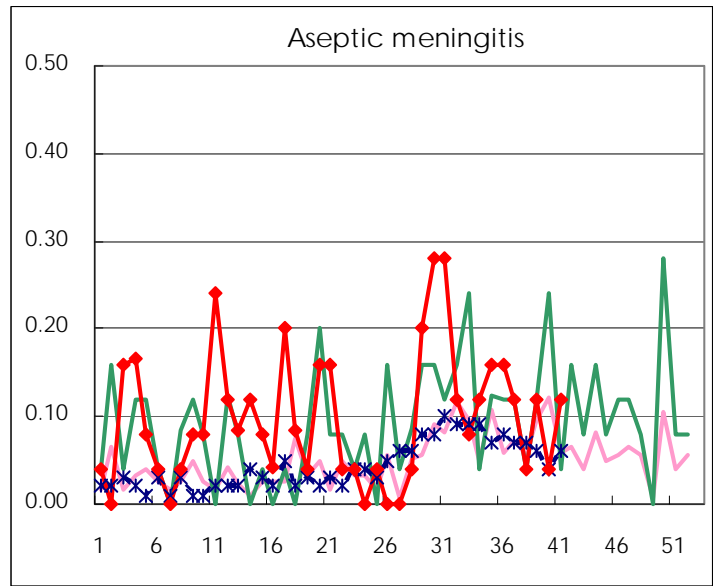
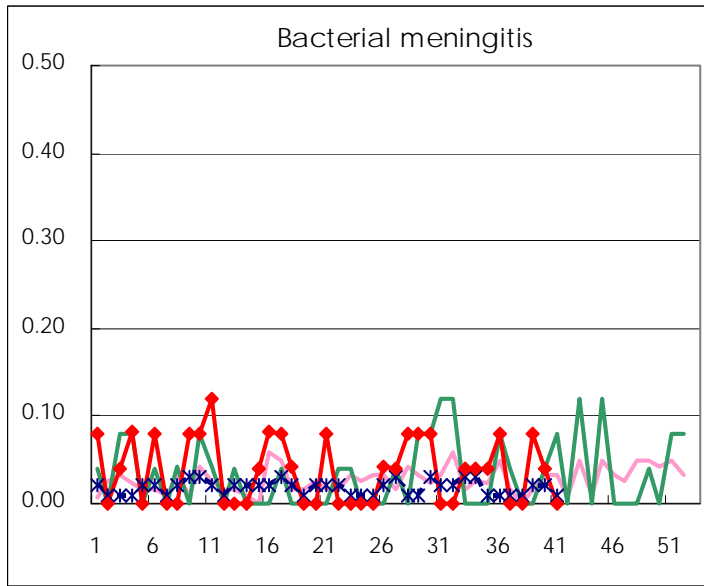
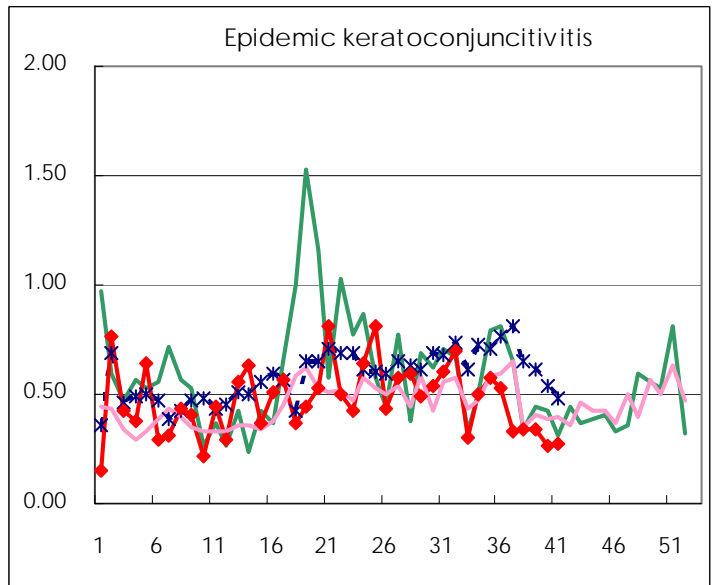
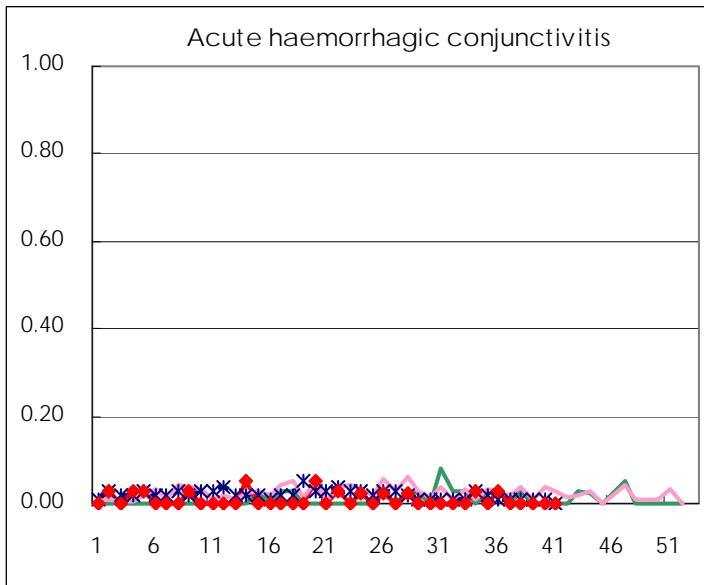
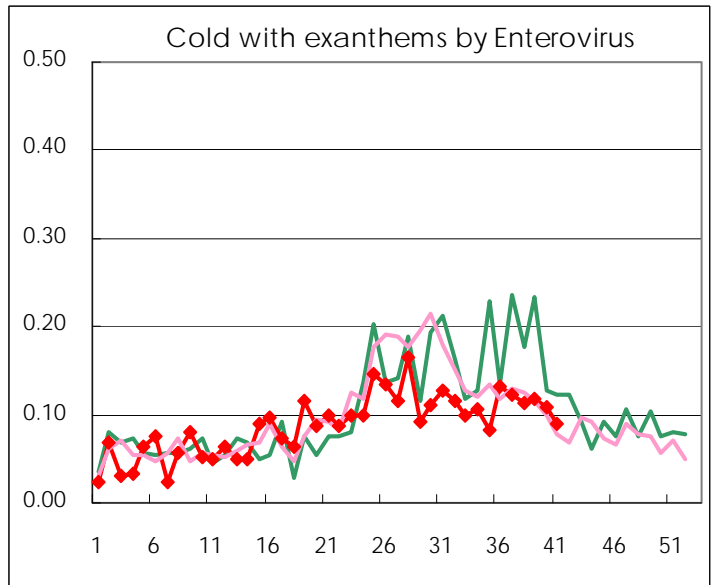
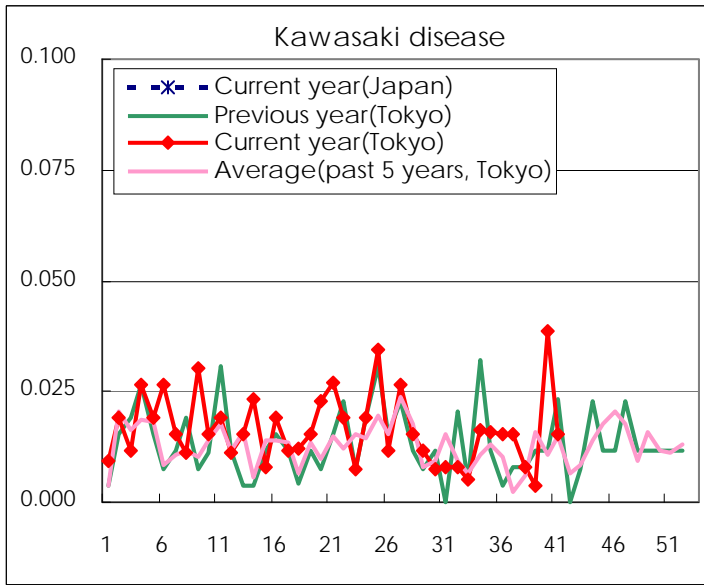
Diseases	Tokyo				
	38th	39th	40th	41st	/sentinel
Respiratory syncytial virus infection	263	245	263	322	1.25
Pharyngoconjunctival fever	117	66	74	96	0.37
Group A streptococcal pharyngitis	200	209	290	302	1.18
Infectious gastroenteritis	753	736	898	896	3.49
Chickenpox	115	112	162	169	0.66
Hand, foot, and mouth disease	558	325	350	384	1.49
Erythema infectiosum	12	16	21	28	0.11
Exanthem subitum	168	137	173	179	0.70
Pertussis	2	3	1		
Herpangina	121	74	64	73	0.28
Mumps	37	48	49	50	0.19
Kawasaki disease	2	1	10	4	0.02
Cold with exanthems by Enterovirus	29	31	28	23	0.09
Influenza	1	1	4	14	0.04
Acute hemorrhagic conjunctivitis					
Epidemic keratoconjunctivitis	13	13	10	10	0.28
Bacterial meningitis		2	1		
Aseptic meningitis	1	3	1	3	0.12
Mycoplasma pneumonia	7	6	7	4	0.16
Chlamydial pneumonia (excluding psittacosis)		1	1	2	0.08
Influenza-Associated Hospitalizations					

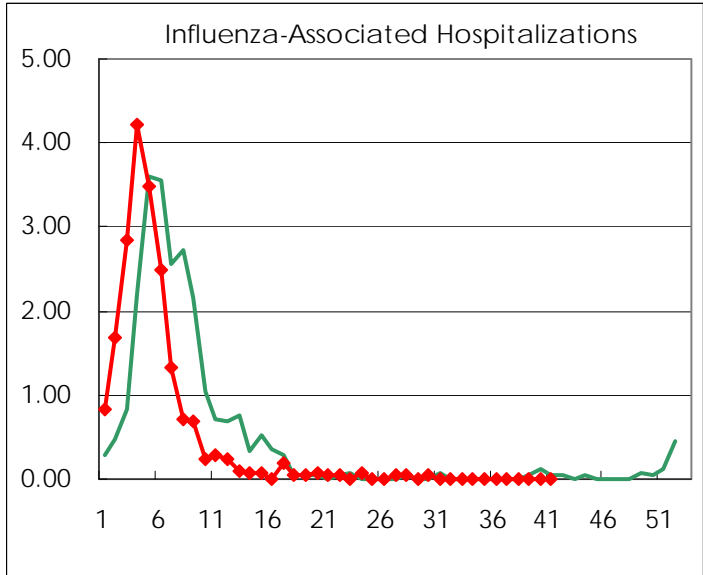
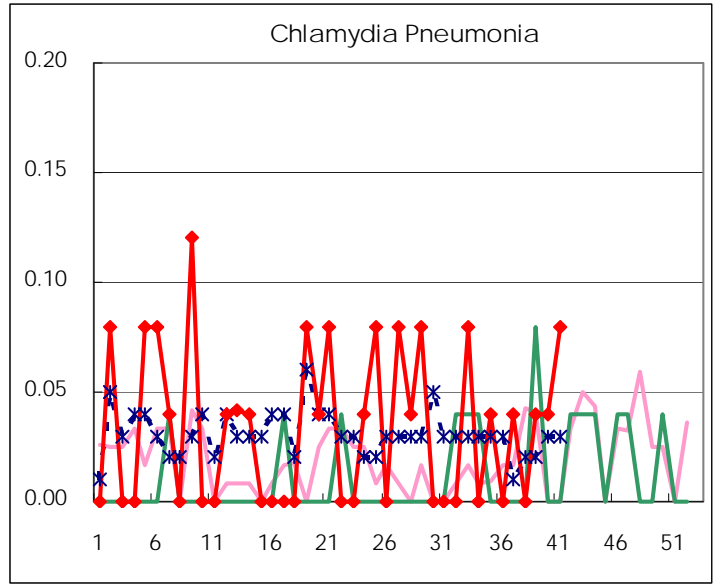
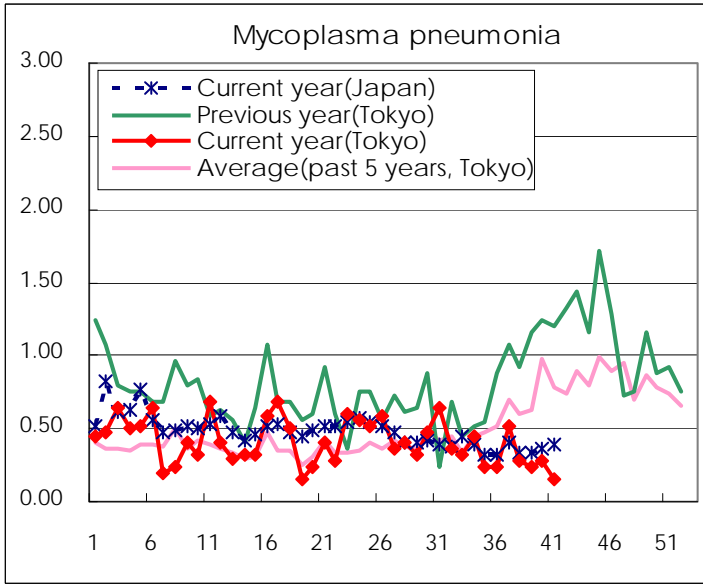
(Blank means 0.)

Disease Trend Graph (weekly reported cases per sentinel in comparison)









Number of sentinel facilities for weekly reporting		
Types of sentinels	Number of sentinels	Sentinels having reported
Pediatric	264	257
Influenza	419	400
Ophthalmic	39	36
Specially-designated	25	25

Tokyo Metropolitan Government
Infectious Disease Surveillance Center