
INFECTIOUS DISEASES WEEKLY REPORT

TOKYO IDWR

Tokyo Metropolitan Infectious Disease Surveillance Center

31 October 2013 / Number 43

Surveillance System in Tokyo, Japan

The infectious diseases which all physicians must report

All physicians must report to health centers the incidence of the diseases which are shown at page one. Health centers electronically report the individual cases to Tokyo Metropolitan Infectious Disease Surveillance Center.

The infectious diseases required to be reported by the sentinels

The numbers of patients who visit the sentinel clinics or hospitals during a week are reported to health centers in Tokyo. And they electronically report the numbers to Tokyo Metropolitan Infectious Disease Surveillance Center. We have about 500 sentinel clinics and hospitals in Tokyo.

1st Week is early January and 52nd Week is end of December.

Tokyo Metropolitan Institute of Public Health

TEL:81-3-3363-3213 FAX:81-3-5332-7365

e-mail:idsc@tokyo-eiken.go.jp

URL:idsc.tokyo-eiken.go.jp/

Number of patients with the diseases which all physicians must report

Category	Diseases	Tokyo					Japan	
		40th	41st	42nd	43rd	Cum 2013	43rd	Cum 2013
I	Ebola hemorrhagic fever							
	Crimean-Congo hemorrhagic fever							
	Smallpox							
	South American hemorrhagic fever							
	Plague							
	Marburg disease							
	Lassa fever							
II	Acute poliomyelitis							1
	Tuberculosis	83	97	68	79	3,306	394	21,854
	Diphtheria							
	Severe Acute Respiratory Syndrome(SARS)							
	Avian influenza H5N1							
※	Avian influenza H7N9							
III	Cholera							2
	Shigellosis	1				29	1	121
	Enterohemorrhagic Escherichia coli infection	9	3	3	16	350	63	3,538
	Typhoid fever		3	1	1	20	2	60
	Paratyphoid fever	1				18	1	43
IV	Hepatitis E		2	1		27	1	101
	West Nile fever							
	Hepatitis A					18	3	111
	Echinococcosis							12
	Yellow fever							
	Psittacosis					2		8
	Omsk hemorrhagic fever							
	Relapsing fever							1
	Kyasanur forest disease							
	Q fever					3		5
	Rabies							
	Coccidioidomycosis					3		3
	Monkeypox							
	Severe Fever with Thrombocytopenia Syndrome						1	41
	Hemorrhagic fever with renal syndrome							
	Western equine encephalitis							
	Tick-borne encephalitis							
	Anthrax							
	Chikungunya fever					3		11
	Scrub typhus(Tsutsugamushi disease)		1	1		5	6	159
	Dengue fever	7	2	3	1	62	3	216
	Eastern equine encephalitis							
	Avian influenza (excluding H5N1 and H7N9)							
	Nipah virus infection							
	Japanese spotted fever						8	133
	Japanese encephalitis							8
	Hantavirus pulmonary syndrome							
	Herpes B virus infection							
	Glanders							
	Brucellosis							2
	Venezuelan equine encephalitis							
	Hendra virus infection							
Epidemic typhus								
Botulism								
Malaria					7		41	
Tularemia								
Lyme disease					7		17	
Lyssavirus infection(excluding rabies)								
Rift valley fever								
Melioidosis					1		4	
Legionellosis	1	4	3	2	69	33	919	
Leptospirosis			1		4	1	21	
Rocky mountain spotted fever								

Category	Diseases	Tokyo					Japan	
		40th	41st	42nd	43rd	Cum 2013	43rd	Cum 2013
V	Amebiasis	1	4	2	4	153	18	860
	Viral hepatitis(excluding hepatitis A and E)		1			61	2	233
	Acute encephalitis(excluding JE and WNE)	3	1	1		40	2	299
	Cryptosporidiosis		2		2	7	1	18
	Creutzfeldt-Jakob disease			1		14		171
	Severe invasive streptococcal infections(TSLS)		1		1	29	5	169
	Acquired immunodeficiency syndrome (AIDS)	10	12	7	11	401	18	1,273
	Giardiasis		2	1		20	1	70
	Invasive <i>Haemophilus influenzae</i> disease					9	1	85
	Invasive meningococcal disease			1		10	1	18
	Invasive pneumococcal disease	2		3	2	74	15	648
	Meningococcal meningitis							2
	Congenital rubella syndrome				2	10	2	19
	Syphilis	3	10	7	11	353	21	1,005
	Tetanus					4	2	114
	Vancomycin-resistant <i>S. aureus</i> infection							
	Vancomycin-resistant <i>Enterococcus</i> infection					7		46
	Rubella	8	7	5	6	3,410	14	14,218
	Measles			1		60	1	208

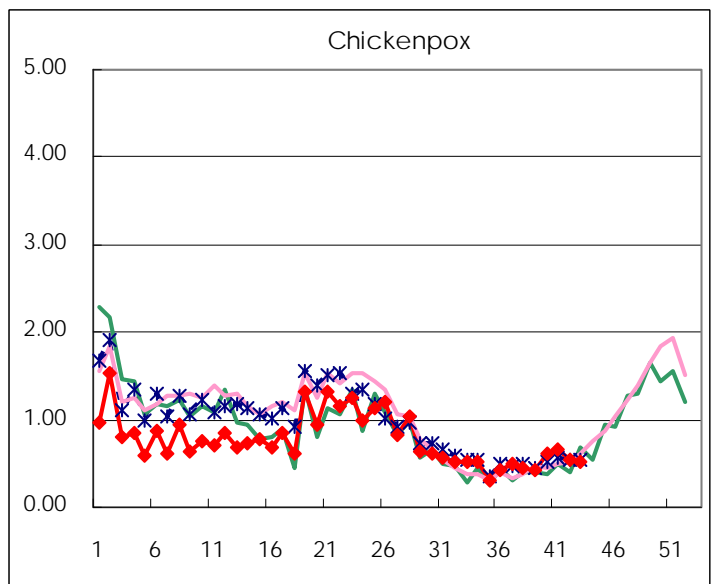
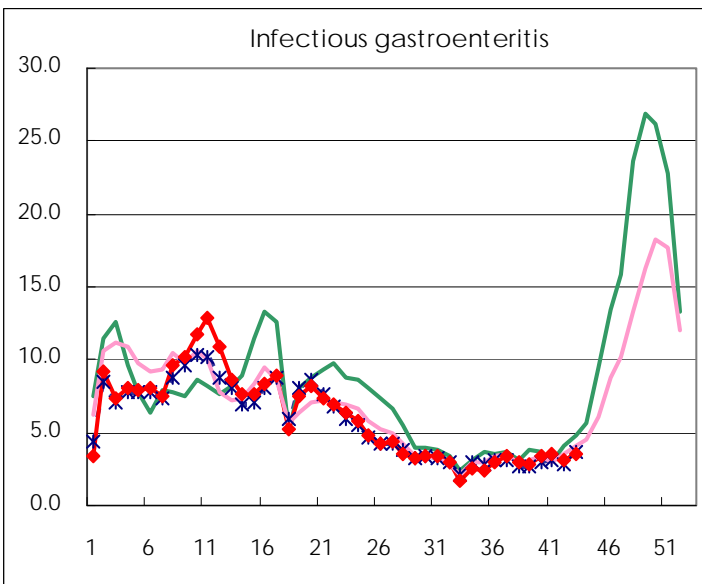
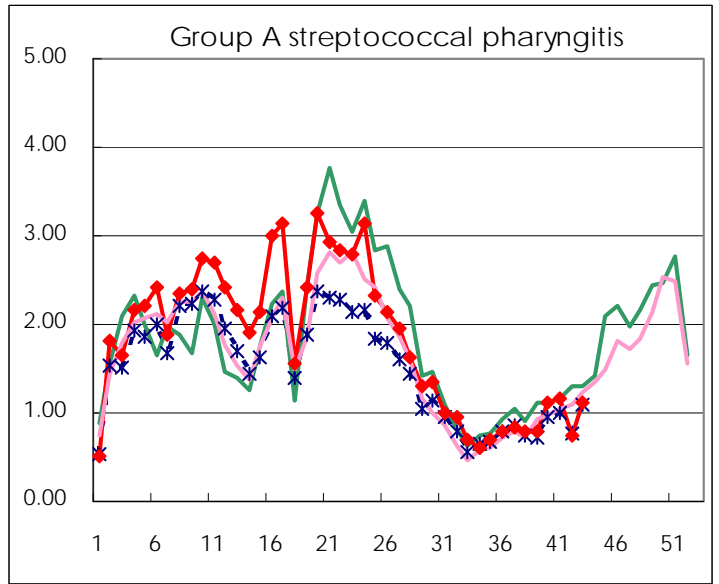
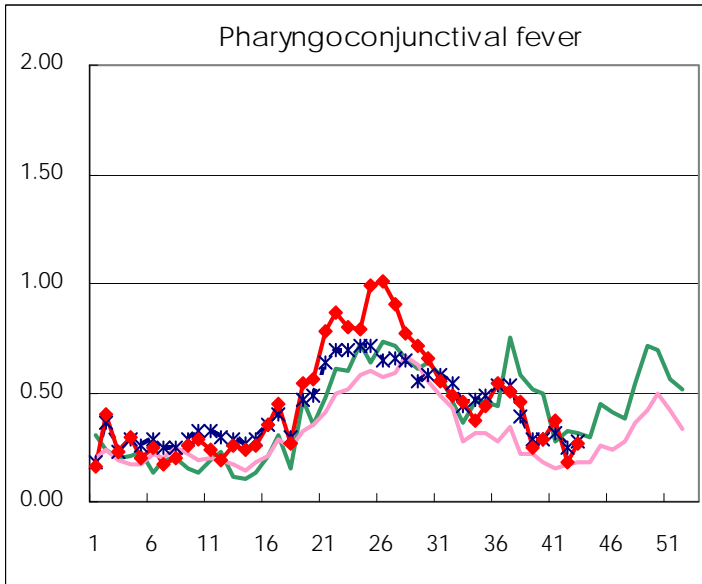
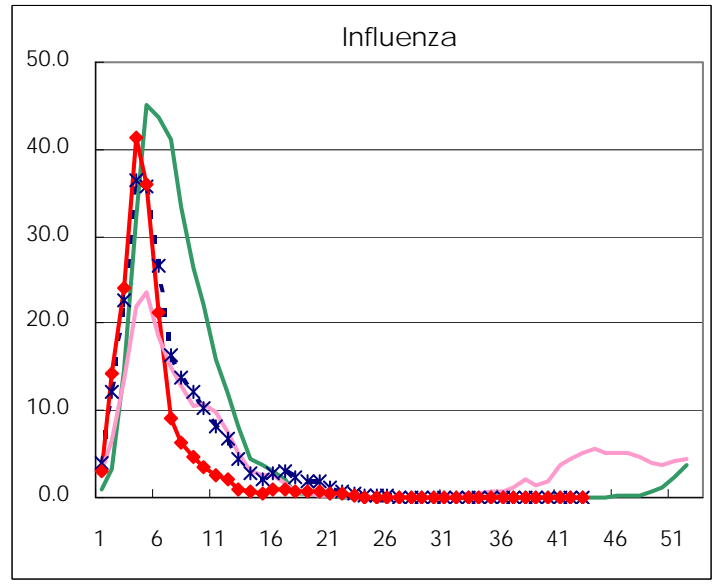
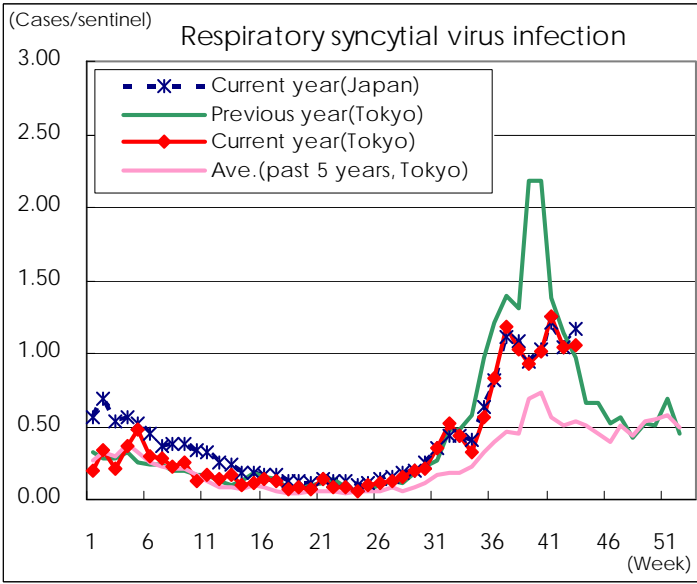
※ Designated infectious disease

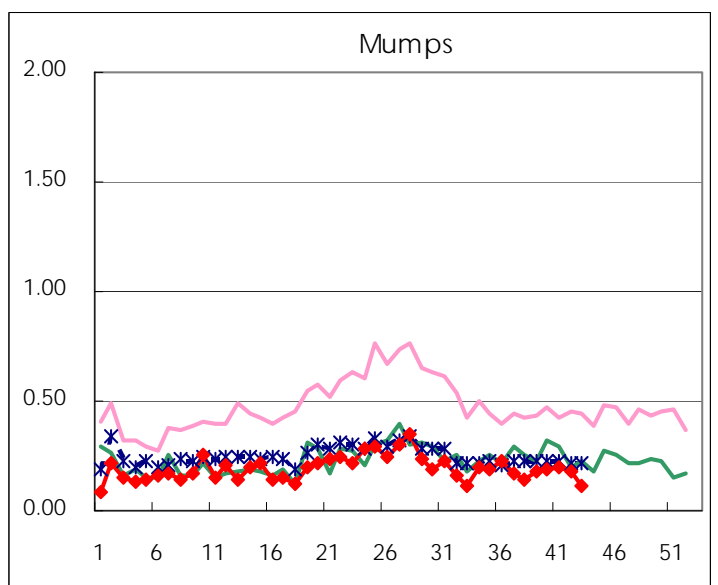
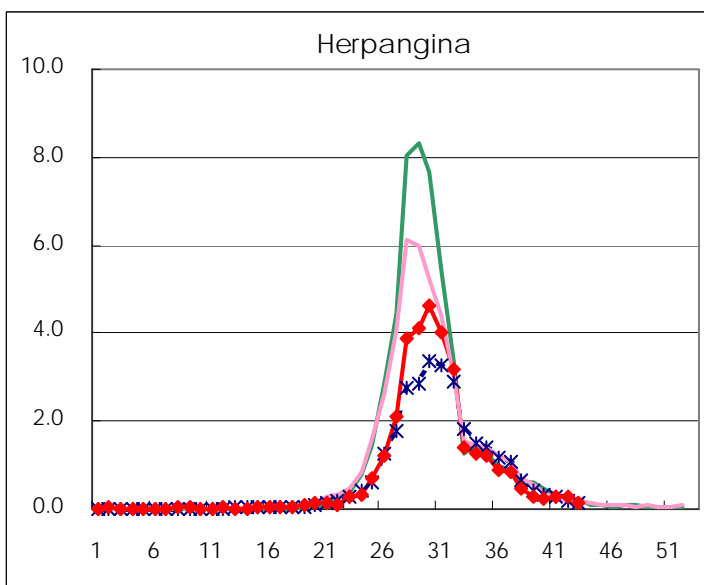
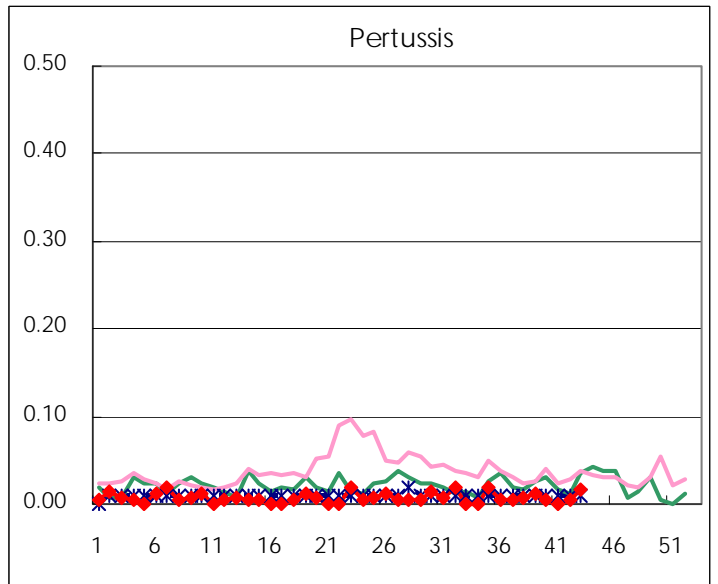
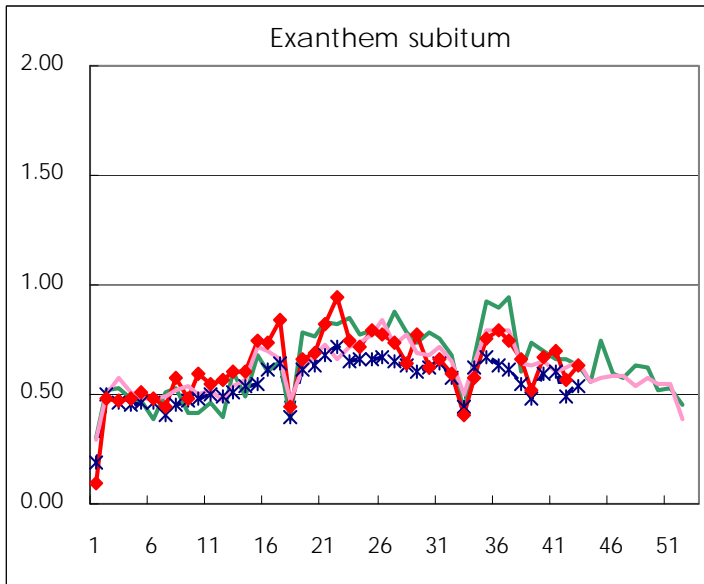
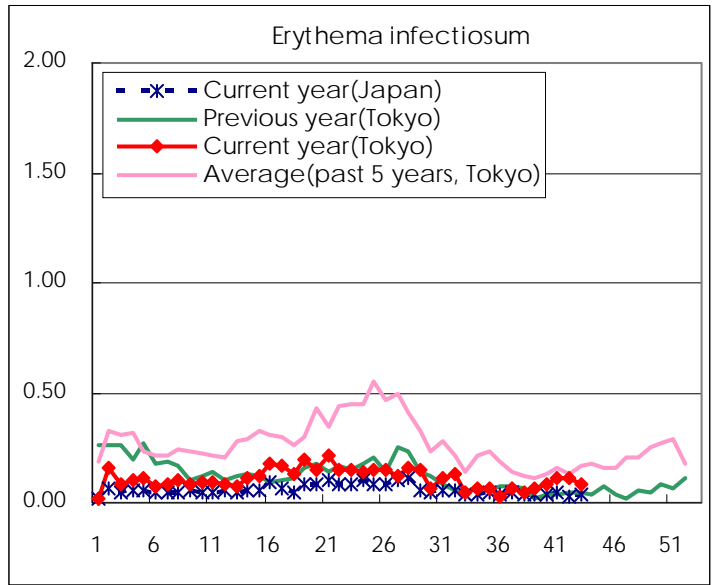
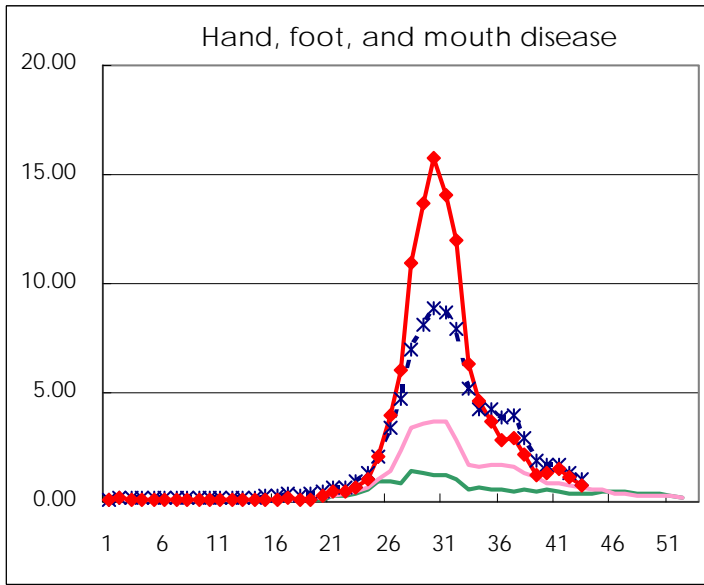
Number of patients with the diseases to be reported
by the designated clinics and hospitals

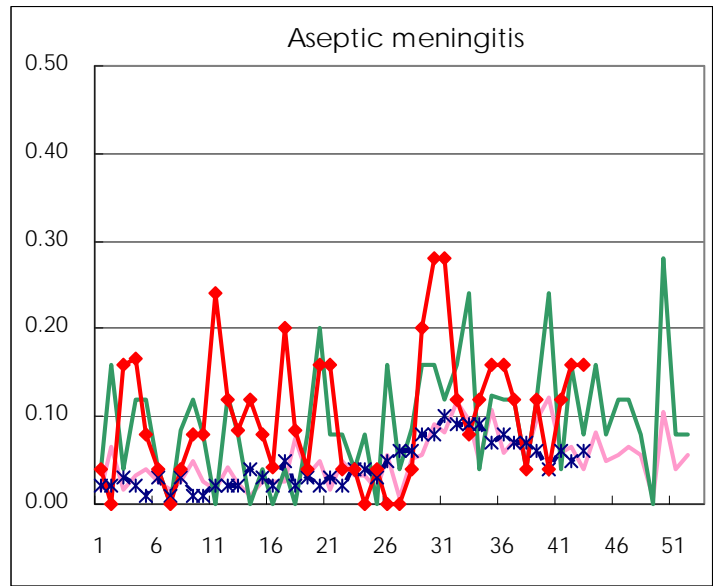
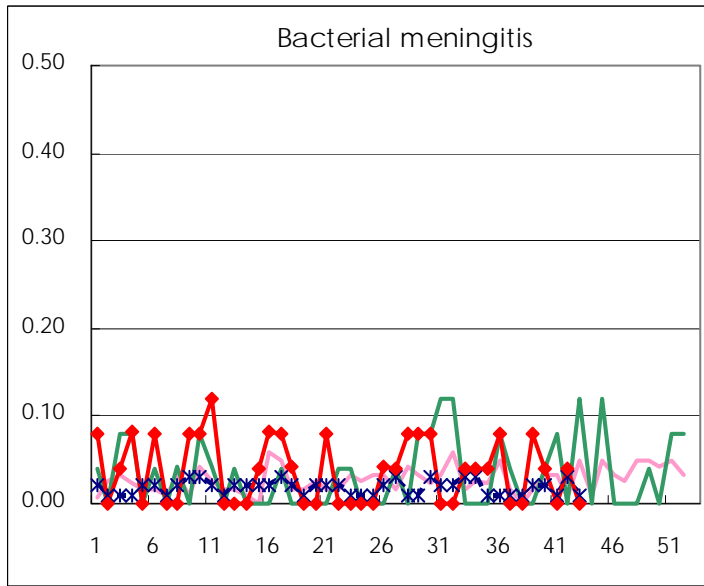
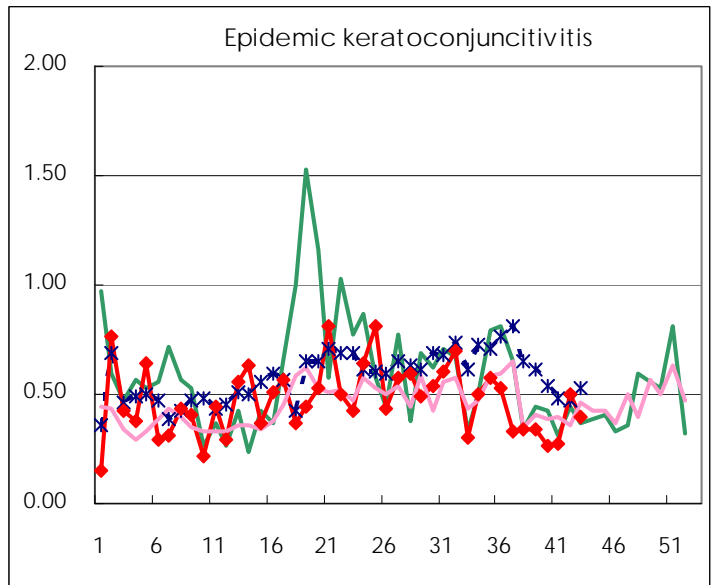
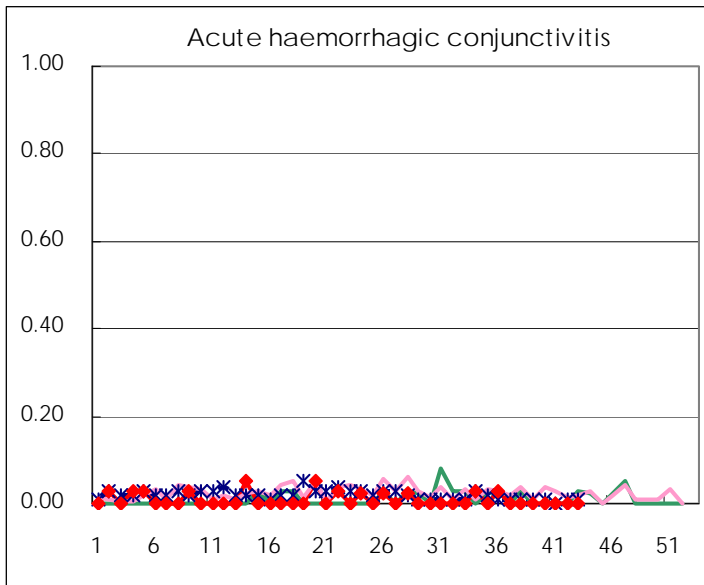
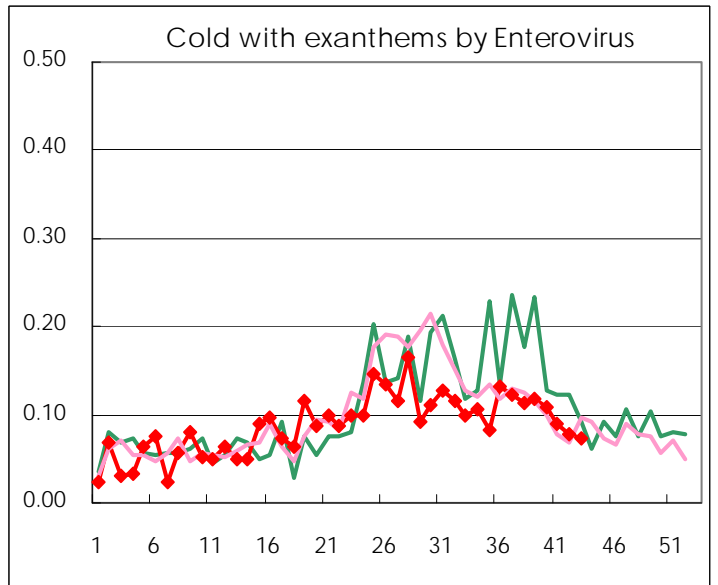
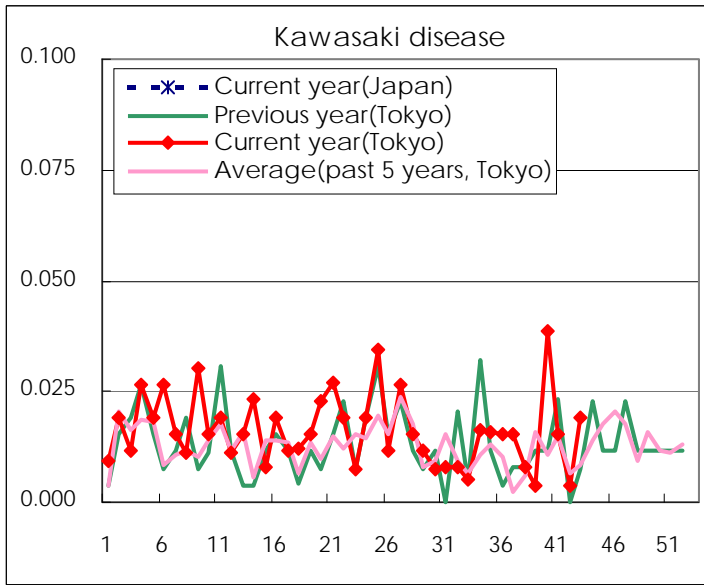
Diseases	Tokyo				
	40th	41st	42nd	43rd	/sentinel
Respiratory syncytial virus infection	263	322	271	274	1.05
Pharyngoconjunctival fever	74	96	48	70	0.27
Group A streptococcal pharyngitis	290	302	195	292	1.12
Infectious gastroenteritis	898	896	815	930	3.58
Chickenpox	162	169	140	133	0.51
Hand, foot, and mouth disease	350	384	296	196	0.75
Erythema infectiosum	21	28	28	22	0.08
Exanthem subitum	173	179	146	165	0.63
Pertussis	1		1	4	0.02
Herpangina	64	73	67	36	0.14
Mumps	49	50	46	30	0.12
Kawasaki disease	10	4	1	5	0.02
Cold with exanthems by Enterovirus	28	23	20	19	0.07
Influenza	4	14	7	39	0.09
Acute hemorrhagic conjunctivitis					
Epidemic keratoconjunctivitis	10	10	19	15	0.39
Bacterial meningitis	1		1		
Aseptic meningitis	1	3	4	4	0.16
Mycoplasma pneumonia	7	4	7	10	0.40
Chlamydial pneumonia (excluding psittacosis)	1	2			
Infectious gastroenteritis (only by Rotavirus)			1		
Influenza-Associated Hospitalizations				1	0.04

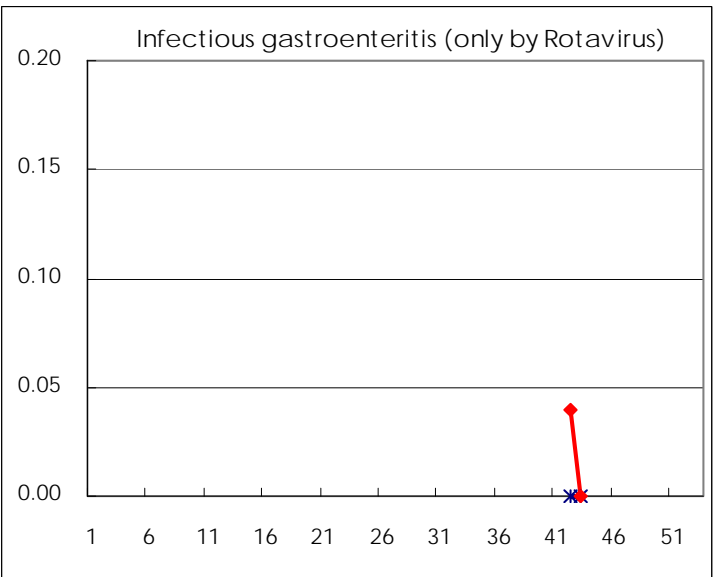
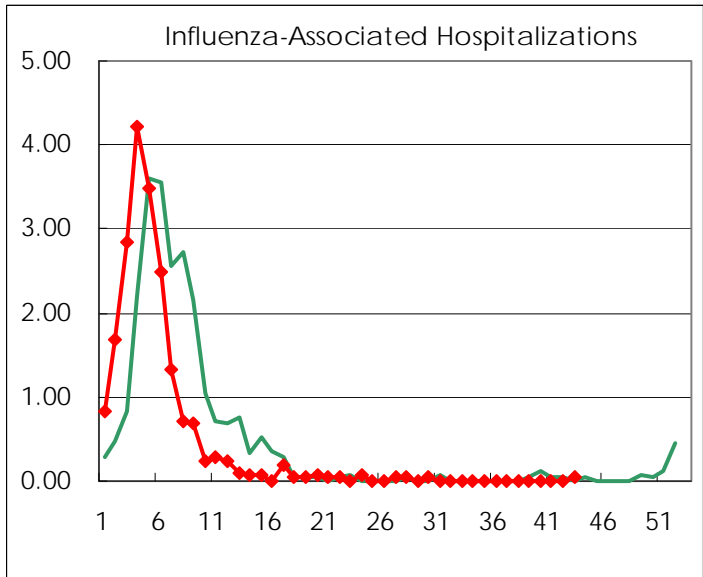
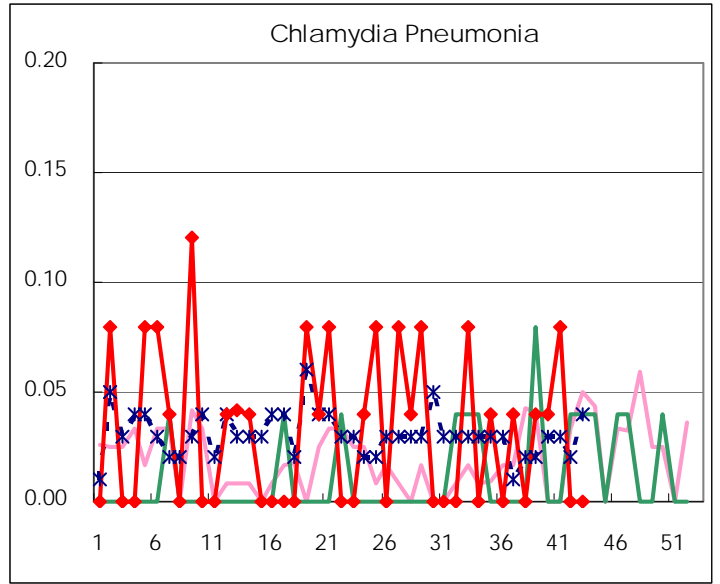
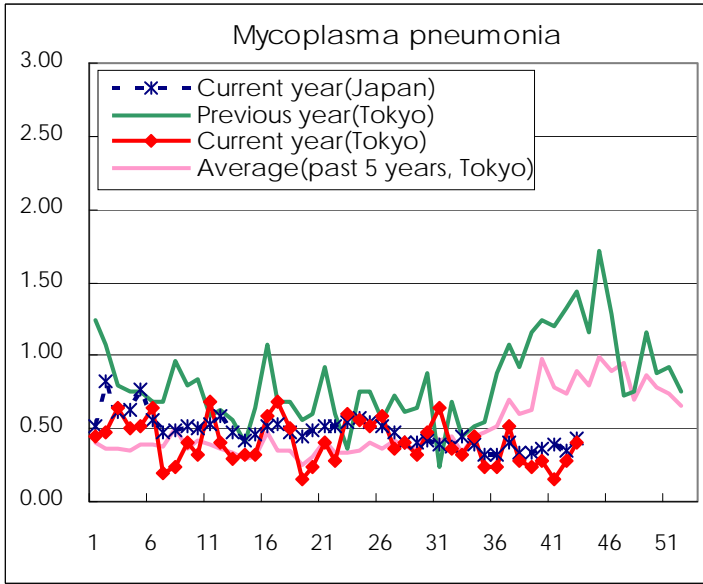
(Blank means 0.)

Disease Trend Graph (weekly reported cases per sentinel in comparison)









Number of sentinel facilities for weekly reporting		
Types of sentinels	Number of sentinels	Sentinels having reported
Pediatric	264	260
Influenza	419	412
Ophthalmic	39	38
Specially-designated	25	25

Tokyo Metropolitan Government
Infectious Disease Surveillance Center