
INFECTIOUS DISEASES WEEKLY REPORT

TOKYO IDWR

Tokyo Metropolitan Infectious Disease Surveillance Center

7 November 2013 / Number 44

Surveillance System in Tokyo, Japan

The infectious diseases which all physicians must report

All physicians must report to health centers the incidence of the diseases which are shown at page one. Health centers electronically report the individual cases to Tokyo Metropolitan Infectious Disease Surveillance Center.

The infectious diseases required to be reported by the sentinels

The numbers of patients who visit the sentinel clinics or hospitals during a week are reported to health centers in Tokyo. And they electronically report the numbers to Tokyo Metropolitan Infectious Disease Surveillance Center. We have about 500 sentinel clinics and hospitals in Tokyo.

1st Week is early January and 52nd Week is end of December.

Tokyo Metropolitan Institute of Public Health

TEL:81-3-3363-3213 FAX:81-3-5332-7365

e-mail:idsc@tokyo-eiken.go.jp

URL:idsc.tokyo-eiken.go.jp/

Number of patients with the diseases which all physicians must report

Category	Diseases	Tokyo					Japan	
		41st	42nd	43rd	44th	Cum 2013	44th	Cum 2013
I	Ebola hemorrhagic fever							
	Crimean-Congo hemorrhagic fever							
	Smallpox							
	South American hemorrhagic fever							
	Plague							
	Marburg disease							
	Lassa fever							
II	Acute poliomyelitis							1
	Tuberculosis	97	68	82	86	3,395	384	22,390
	Diphtheria							
	Severe Acute Respiratory Syndrome(SARS)							
	Avian influenza H5N1							
※	Avian influenza H7N9							
III	Cholera						1	3
	Shigellosis					29	2	123
	Enterohemorrhagic Escherichia coli infection	3	3	16	8	358	50	3,598
	Typhoid fever	3	1	1		20		60
	Paratyphoid fever					18		43
IV	Hepatitis E	2	1		1	28	2	103
	West Nile fever							
	Hepatitis A					18	2	114
	Echinococcosis							16
	Yellow fever							
	Psittacosis					2		8
	Omsk hemorrhagic fever							
	Relapsing fever							1
	Kyasanur forest disease							
	Q fever					3		5
	Rabies							
	Coccidioidomycosis					3		3
	Monkeypox							
	Severe Fever with Thrombocytopenia Syndrome							41
	Hemorrhagic fever with renal syndrome							
	Western equine encephalitis							
	Tick-borne encephalitis							
	Anthrax							
	Chikungunya fever					3		11
	Scrub typhus(Tsutsugamushi disease)	1	1		1	6	4	165
	Dengue fever	2	3	1		62	3	219
	Eastern equine encephalitis							
	Avian influenza (excluding H5N1 and H7N9)							
	Nipah virus infection							
	Japanese spotted fever						4	139
	Japanese encephalitis							8
	Hantavirus pulmonary syndrome							
	Herpes B virus infection							
	Glanders							
	Brucellosis							2
	Venezuelan equine encephalitis							
	Hendra virus infection							
Epidemic typhus								
Botulism								
Malaria					7		41	
Tularemia								
Lyme disease					7		17	
Lyssavirus infection(excluding rabies)								
Rift valley fever								
Melioidosis					1		4	
Legionellosis	4	3	2	1	70	21	945	
Leptospirosis		1			4	1	22	
Rocky mountain spotted fever								

Category	Diseases	Tokyo					Japan	
		41st	42nd	43rd	44th	Cum 2013	44th	Cum 2013
V	Amebiasis	4	2	4	3	156	9	875
	Viral hepatitis(excluding hepatitis A and E)	1			1	62	3	237
	Acute encephalitis(excluding JE and WNE)	1	1		1	41	1	305
	Cryptosporidiosis	2		2		7		18
	Creutzfeldt-Jakob disease		1			14	4	177
	Severe invasive streptococcal infections(TSLS)	1		1		29	3	175
	Acquired immunodeficiency syndrome (AIDS)	12	7	11	2	403	9	1,283
	Giardiasis	2	1			20	1	71
	Invasive <i>Haemophilus influenzae</i> disease					9		86
	Invasive meningococcal disease		1			10		18
	Invasive pneumococcal disease		3	2	5	79	12	667
	Meningococcal meningitis	/	/	/	/			2
	Congenital rubella syndrome			2	1	11	3	22
	Syphilis	10	7	11	7	360	17	1,029
	Tetanus					4		116
	Vancomycin-resistant <i>S. aureus</i> infection							
	Vancomycin-resistant <i>Enterococcus</i> infection					7		47
	Rubella	7	5	6	3	3,412	16	14,240
	Measles		1		1	61	2	210

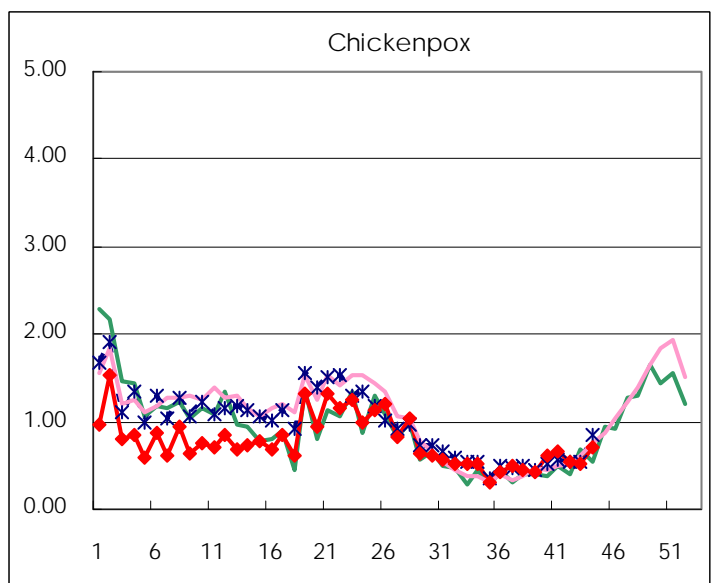
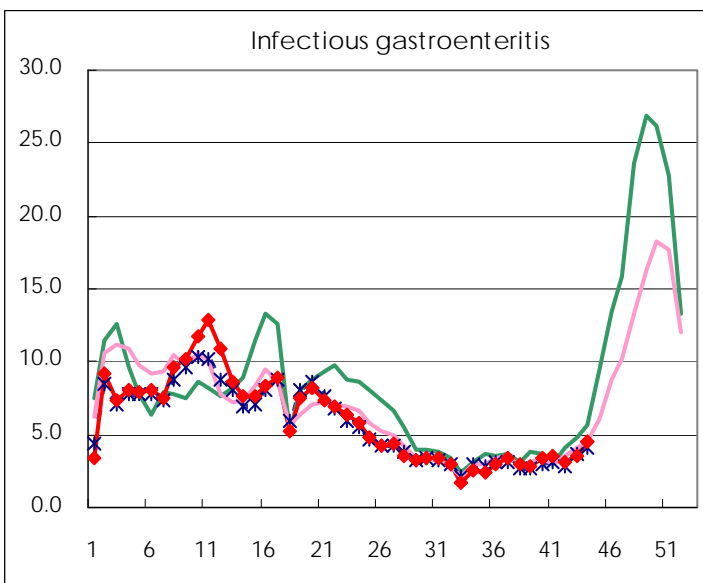
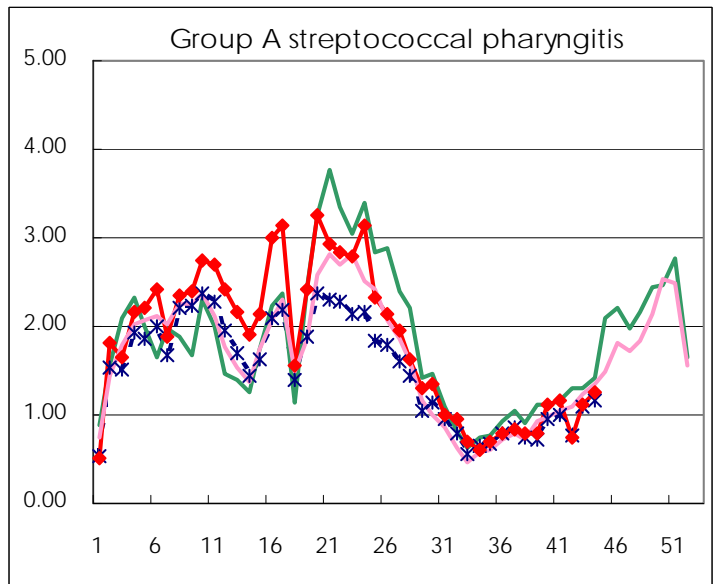
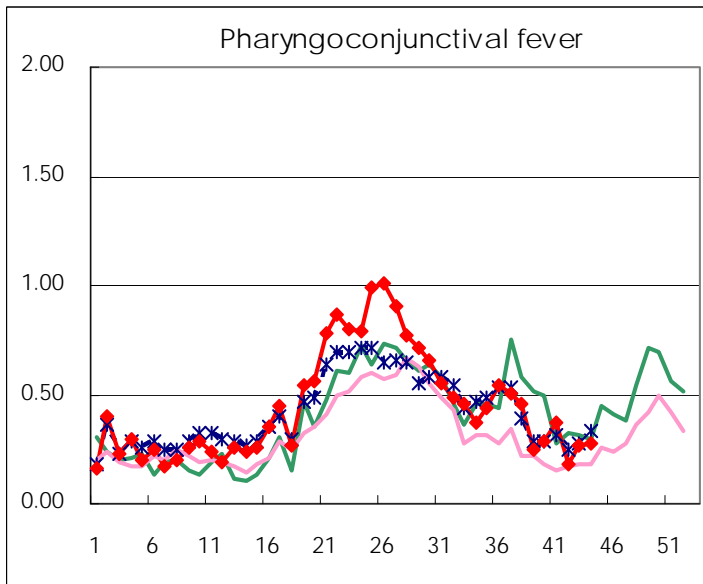
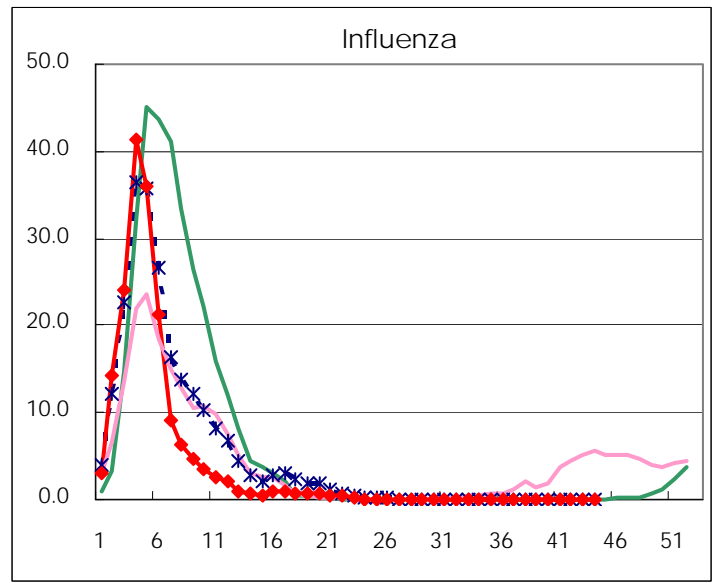
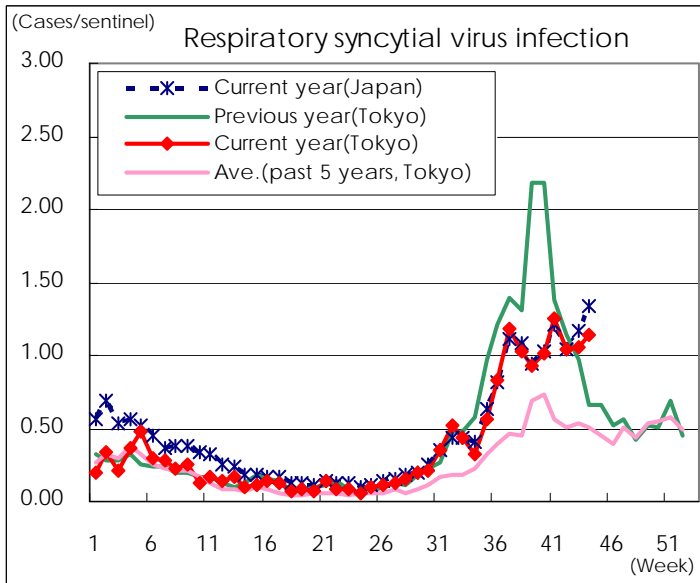
※ Designated infectious disease

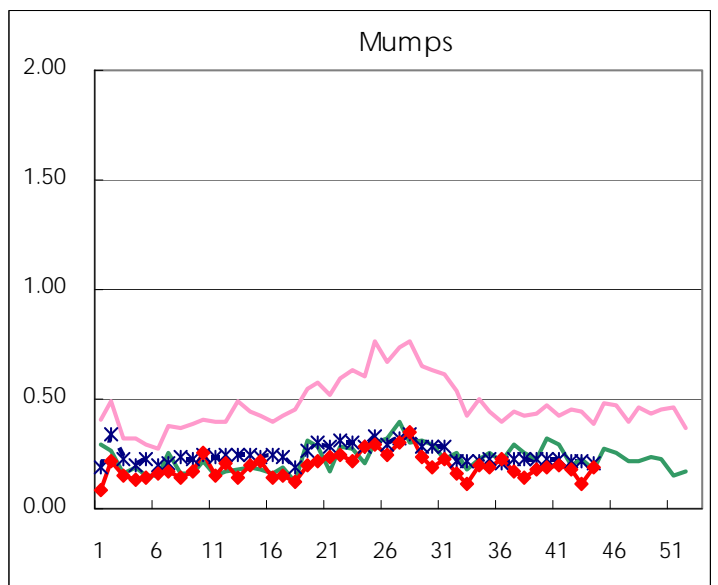
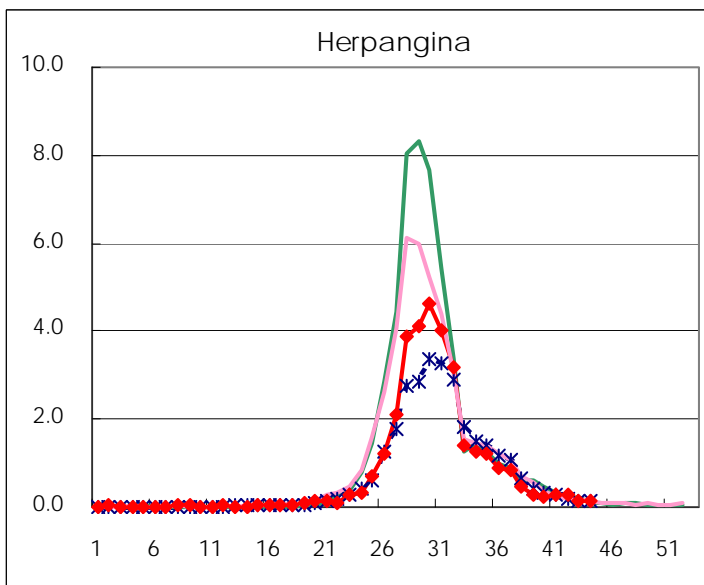
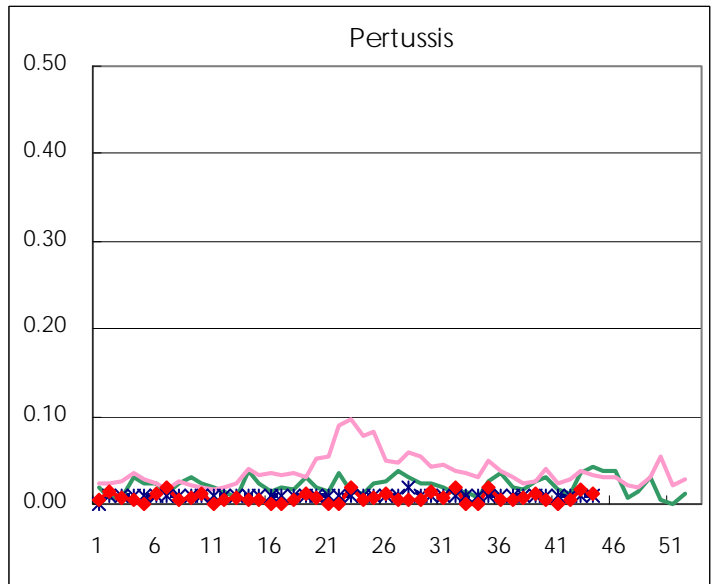
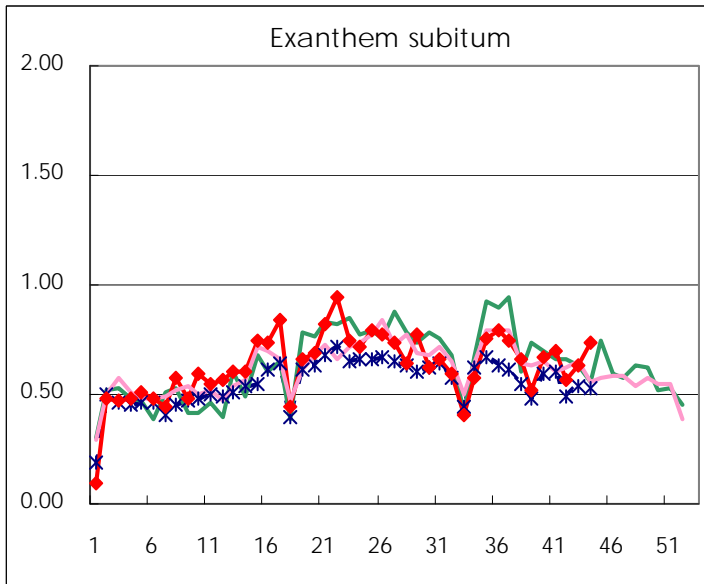
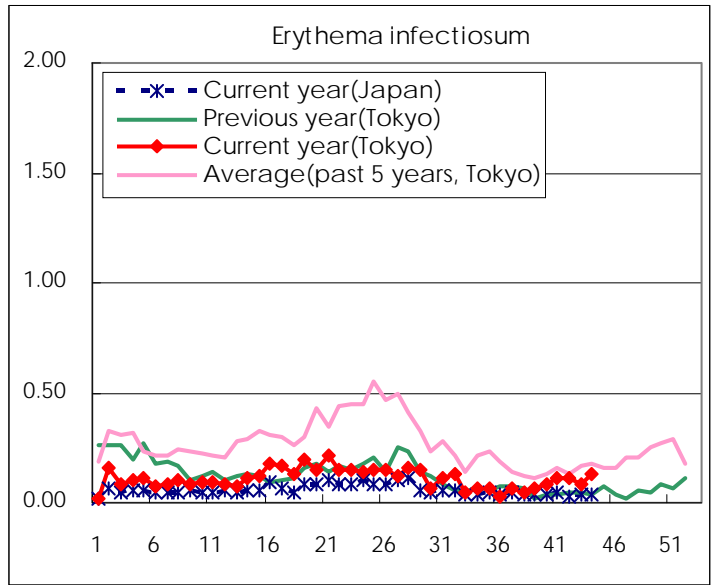
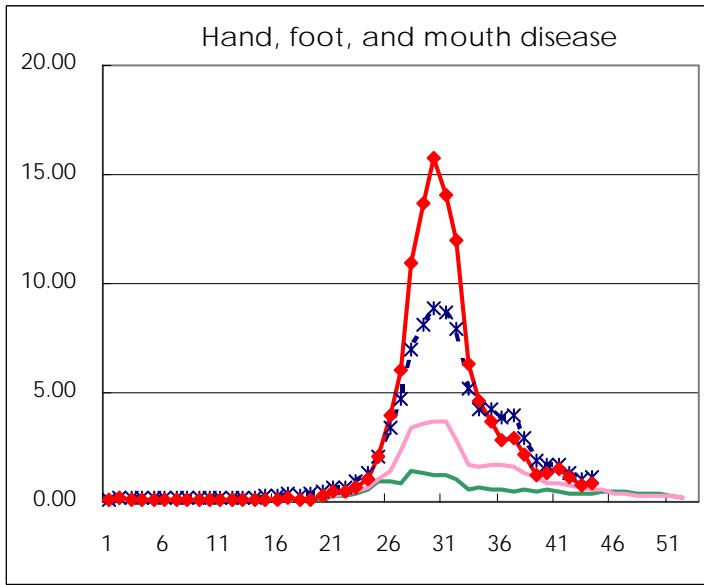
Number of patients with the diseases to be reported
by the designated clinics and hospitals

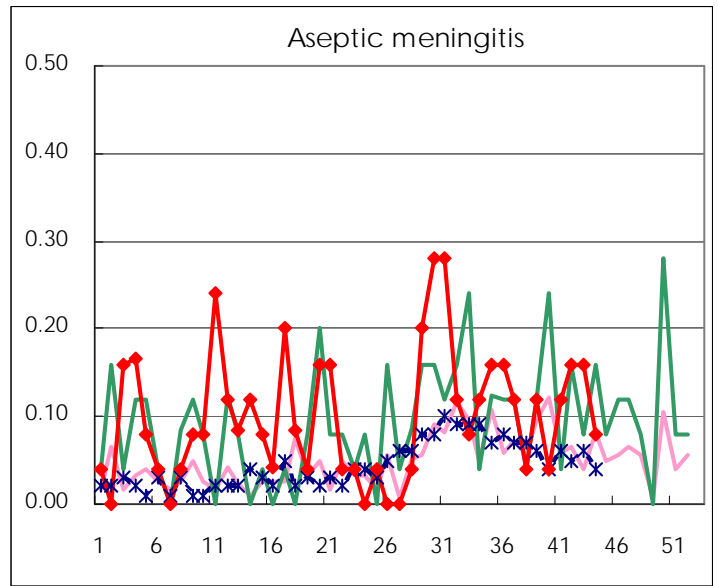
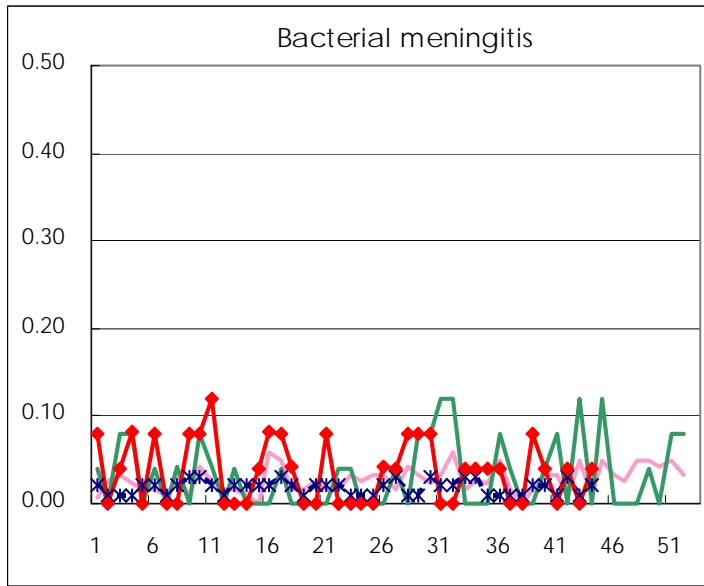
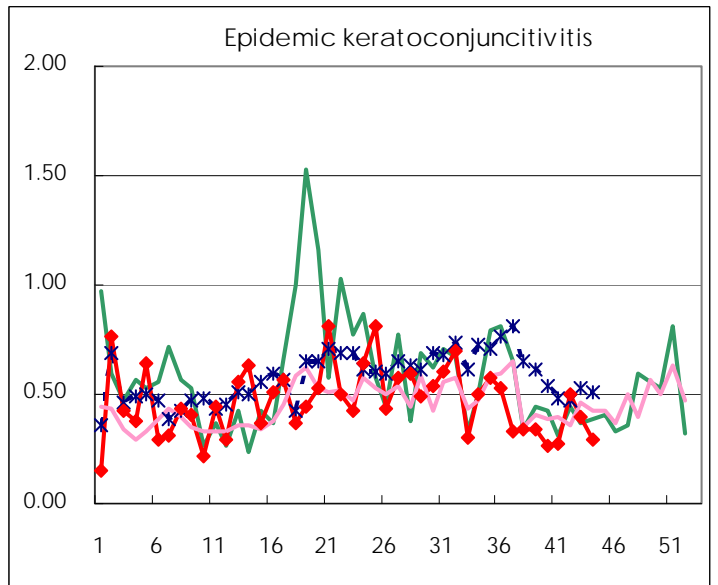
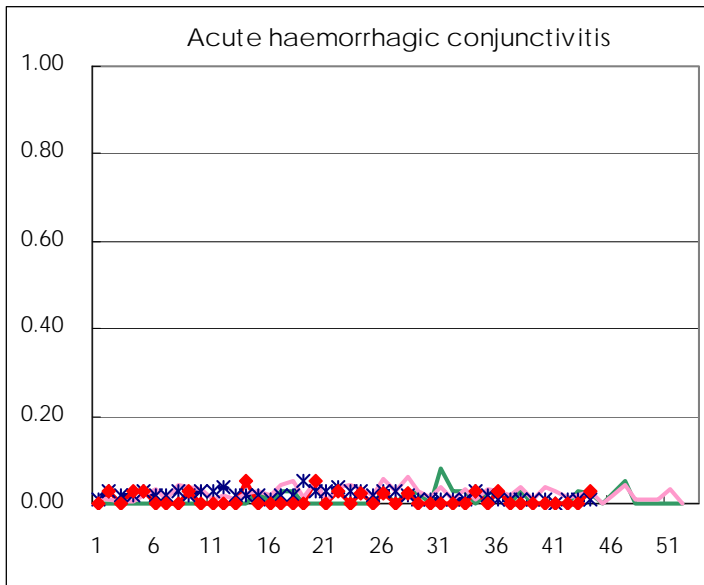
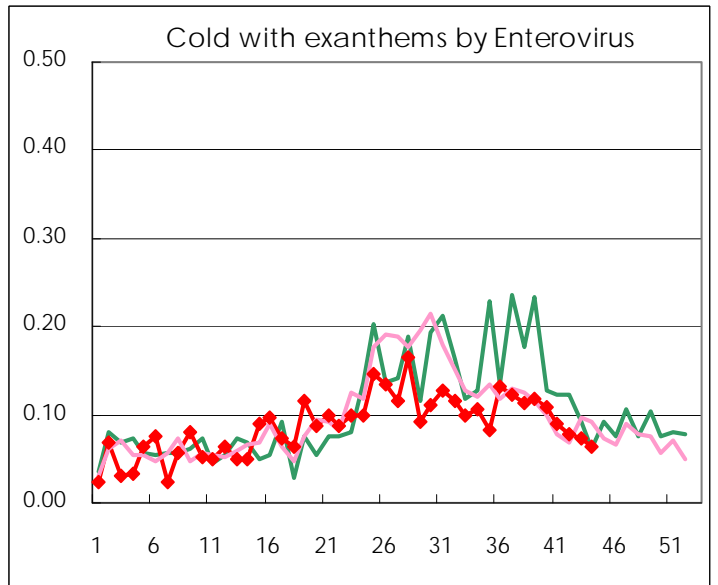
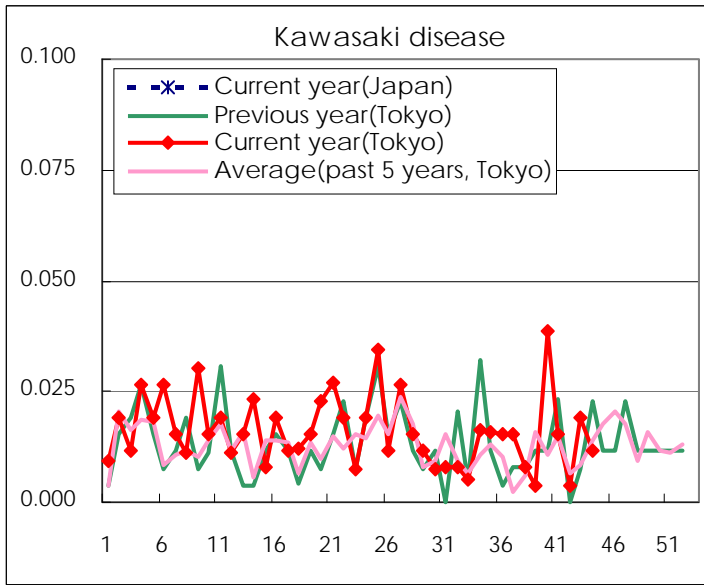
Diseases	Tokyo				
	41st	42nd	43rd	44th	/sentinel
Respiratory syncytial virus infection	322	271	274	291	1.15
Pharyngoconjunctival fever	96	48	70	71	0.28
Group A streptococcal pharyngitis	302	195	292	320	1.26
Infectious gastroenteritis	896	815	930	1,146	4.51
Chickenpox	169	140	133	179	0.70
Hand, foot, and mouth disease	384	296	196	212	0.83
Erythema infectiosum	28	28	22	33	0.13
Exanthem subitum	179	146	165	187	0.74
Pertussis		1	4	3	0.01
Herpangina	73	67	36	32	0.13
Mumps	50	46	30	49	0.19
Kawasaki disease	4	1	5	3	0.01
Cold with exanthems by Enterovirus	23	20	19	16	0.06
Influenza	14	7	39	35	0.09
Acute hemorrhagic conjunctivitis				1	0.03
Epidemic keratoconjunctivitis	10	19	15	11	0.29
Bacterial meningitis		1		1	0.04
Aseptic meningitis	3	4	4	2	0.08
Mycoplasma pneumonia	4	7	10	6	0.24
Chlamydial pneumonia (excluding psittacosis)	2				
Infectious gastroenteritis (only by Rotavirus)		1			
Influenza-Associated Hospitalizations			1		

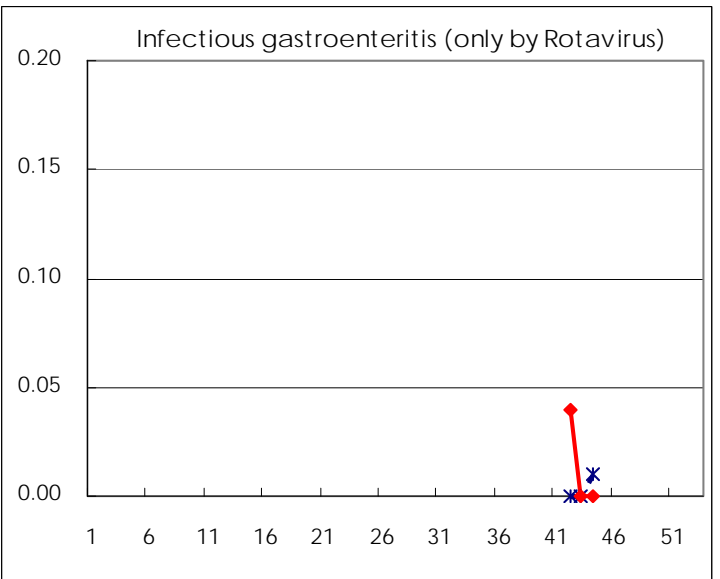
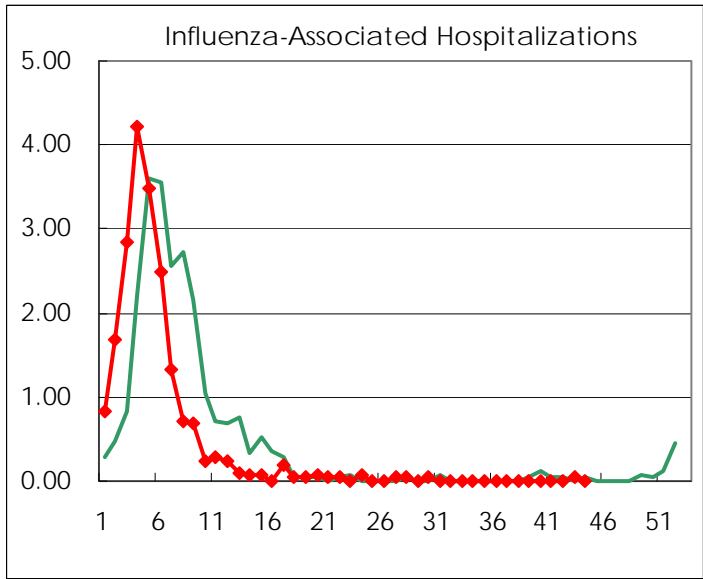
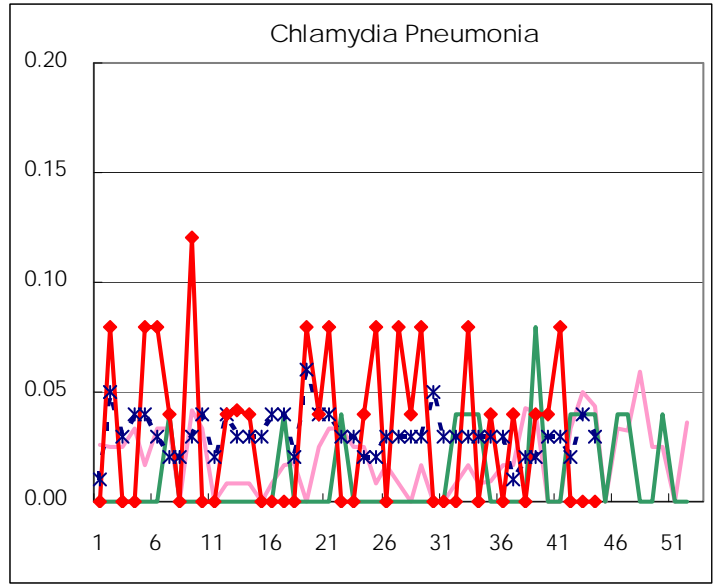
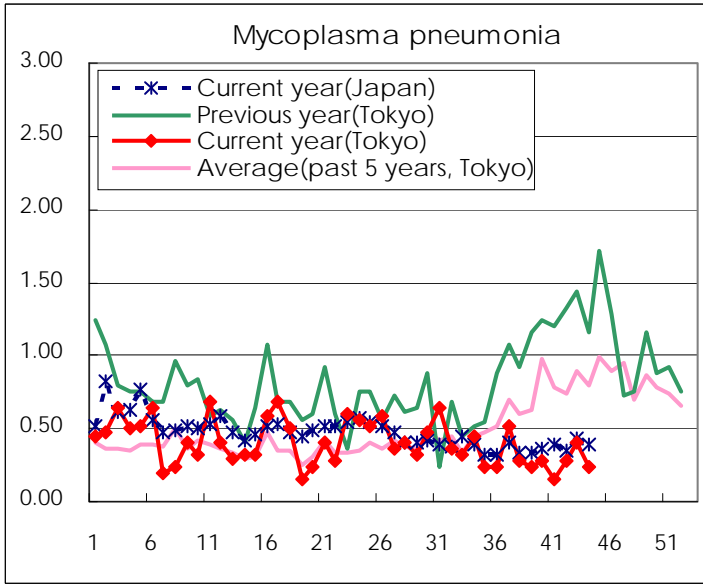
(Blank means 0.)

Disease Trend Graph (weekly reported cases per sentinel in comparison)









Number of sentinel facilities for weekly reporting		
Types of sentinels	Number of sentinels	Sentinels having reported
Pediatric	264	254
Influenza	419	401
Ophthalmic	39	38
Specially-designated	25	25

Tokyo Metropolitan Government
Infectious Disease Surveillance Center