

---

INFECTIOUS DISEASES WEEKLY REPORT

# TOKYO IDWR

Tokyo Metropolitan Infectious Disease Surveillance Center

## 14 November 2013 / Number 45

### Surveillance System in Tokyo, Japan

#### The infectious diseases which all physicians must report

All physicians must report to health centers the incidence of the diseases which are shown at page one. Health centers electronically report the individual cases to Tokyo Metropolitan Infectious Disease Surveillance Center.

#### The infectious diseases required to be reported by the sentinels

The numbers of patients who visit the sentinel clinics or hospitals during a week are reported to health centers in Tokyo. And they electronically report the numbers to Tokyo Metropolitan Infectious Disease Surveillance Center. We have about 500 sentinel clinics and hospitals in Tokyo.

1st Week is early January and 52nd Week is end of December.

Tokyo Metropolitan Institute of Public Health

TEL:81-3-3363-3213 FAX:81-3-5332-7365

e-mail:[idsc@tokyo-eiken.go.jp](mailto:idsc@tokyo-eiken.go.jp)

URL:[idsc.tokyo-eiken.go.jp/](http://idsc.tokyo-eiken.go.jp/)

---

## Number of patients with the diseases which all physicians must report

Category	Diseases	Tokyo					Japan	
		43rd	44th	45th	46th	Cum 2013	46th	Cum 2013
I	Ebola hemorrhagic fever							
	Crimean-Congo hemorrhagic fever							
	Smallpox							
	South American hemorrhagic fever							
	Plague							
	Marburg disease							
	Lassa fever							
II	Acute poliomyelitis							1
	Tuberculosis	69	82	94	64	3,466	318	22,860
	Diphtheria							
	Severe Acute Respiratory Syndrome(SARS)							
	Avian influenza H5N1							
※	Avian influenza H7N9							
III	Cholera							3
	Shigellosis				1	30	2	125
	Enterohemorrhagic Escherichia coli infection	3	16	8	3	361	31	3,635
	Typhoid fever	1	1			20	1	62
	Paratyphoid fever					18	1	44
IV	Hepatitis E	1		1	1	29	1	104
	West Nile fever							
	Hepatitis A					18		114
	Echinococcosis							16
	Yellow fever							
	Psittacosis					2		8
	Omsk hemorrhagic fever							
	Relapsing fever							1
	Kyasanur forest disease							
	Q fever					3		5
	Rabies							
	Coccidioidomycosis					3		3
	Monkeypox							
	Severe Fever with Thrombocytopenia Syndrome						1	42
	Hemorrhagic fever with renal syndrome							
	Western equine encephalitis							
	Tick-borne encephalitis							
	Anthrax							
	Chikungunya fever					3		11
	Scrub typhus(Tsutsugamushi disease)	1		1		6	8	174
	Dengue fever	3	1		1	63	1	221
	Eastern equine encephalitis							
	Avian influenza (excluding H5N1 and H7N9)							
	Nipah virus infection							
	Japanese spotted fever						3	144
	Japanese encephalitis							8
	Hantavirus pulmonary syndrome							
	Herpes B virus infection							
	Glanders							
	Brucellosis							2
	Venezuelan equine encephalitis							
	Hendra virus infection							
Epidemic typhus								
Botulism								
Malaria				2	9	2	44	
Tularemia								
Lyme disease					7		17	
Lyssavirus infection(excluding rabies)								
Rift valley fever								
Melioidosis					1		4	
Legionellosis	3	2	2	2	73	28	978	
Leptospirosis	1			1	5	2	25	
Rocky mountain spotted fever								

Category	Diseases	Tokyo					Japan	
		43rd	44th	45th	46th	Cum 2013	46th	Cum 2013
V	Amebiasis	2	4	3	6	162	14	904
	Viral hepatitis(excluding hepatitis A and E)			1	3	65	5	245
	Acute encephalitis(excluding JE and WNE)	1		1	1	42	1	308
	Cryptosporidiosis		2			7		18
	Creutzfeldt-Jakob disease	1			1	15	5	186
	Severe invasive streptococcal infections(TSLS)		1		2	31	1	179
	Acquired immunodeficiency syndrome (AIDS)	7	11	2	7	410	15	1,310
	Giardiasis	1			1	21	2	74
	Invasive <i>Haemophilus influenzae</i> disease					9	2	89
	Invasive meningococcal disease	1				10		18
	Invasive pneumococcal disease	3	2	6	3	83	23	697
	Meningococcal meningitis							2
	Congenital rubella syndrome		2	1		11	2	24
	Syphilis	7	11	8	6	367	10	1,045
	Tetanus					4	1	117
	Vancomycin-resistant <i>S. aureus</i> infection							
	Vancomycin-resistant <i>Enterococcus</i> infection					7	2	49
	Rubella	5	6	3	5	3,415	10	14,251
	Measles	1		1	2	63	2	215

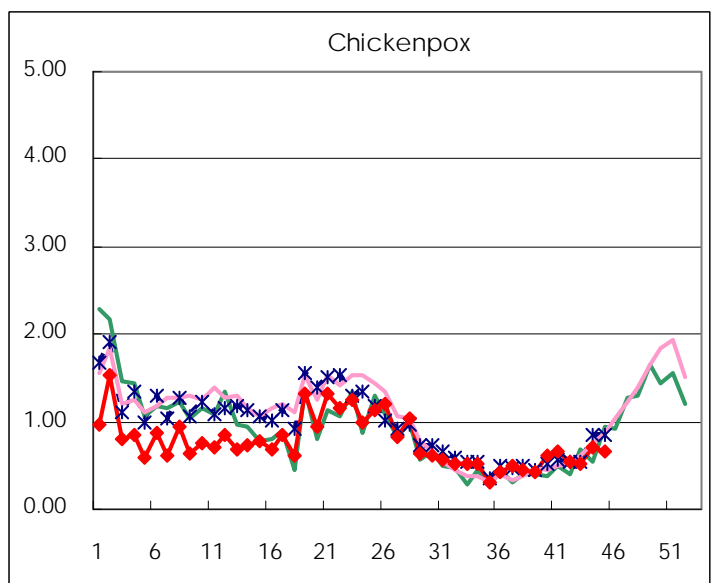
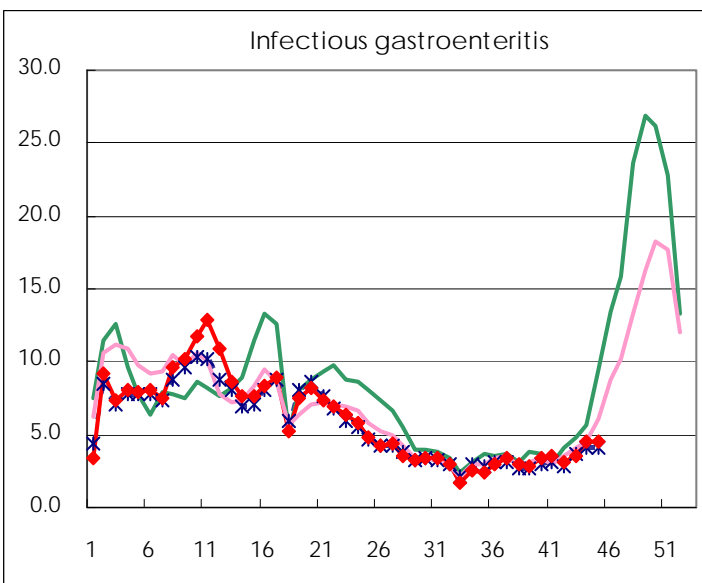
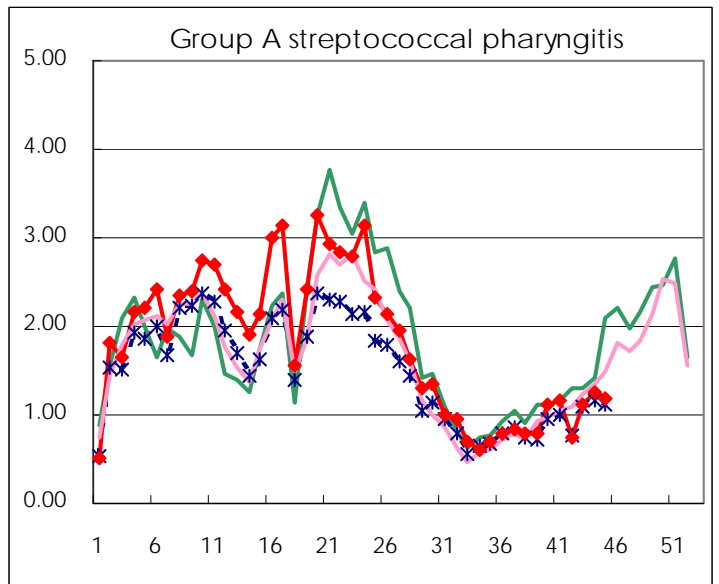
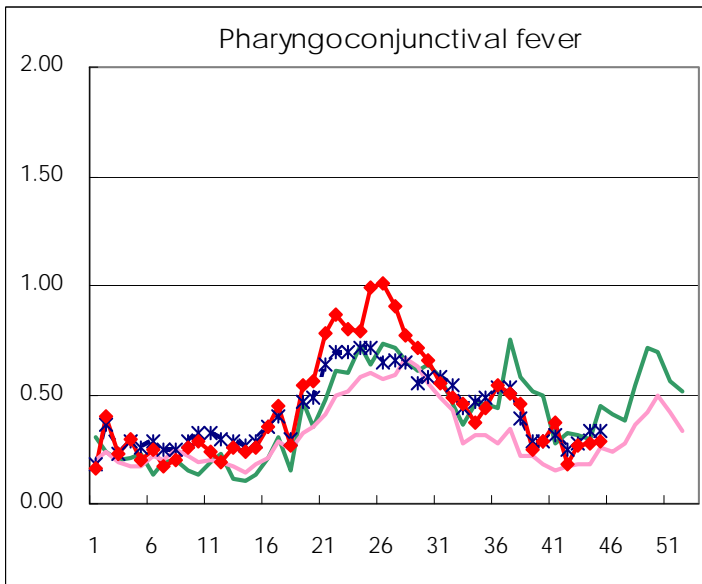
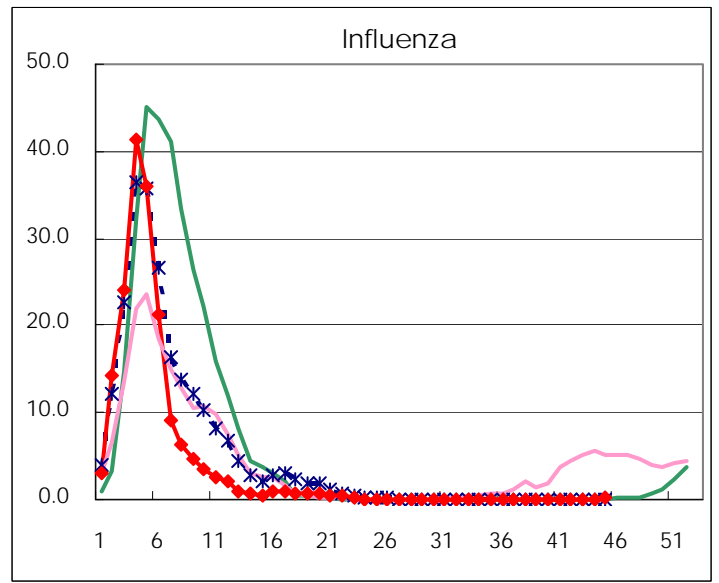
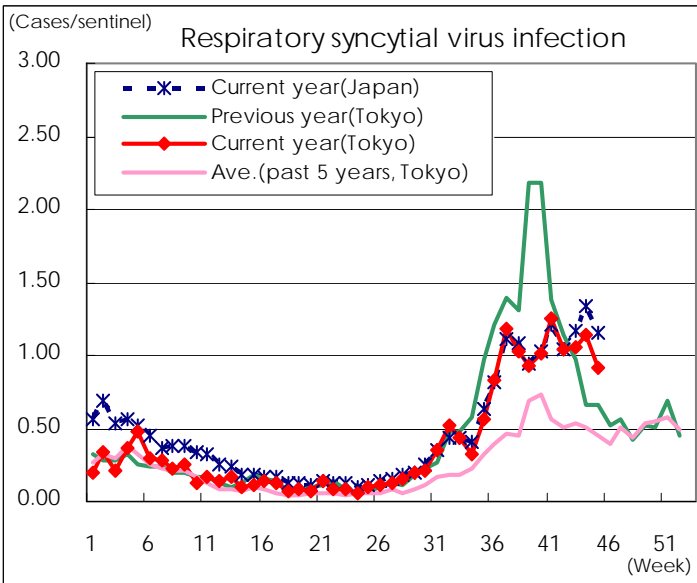
※ Designated infectious disease

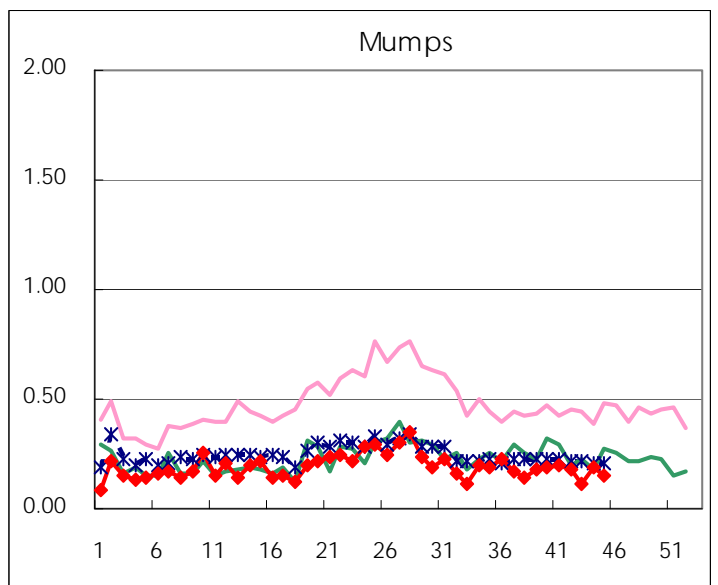
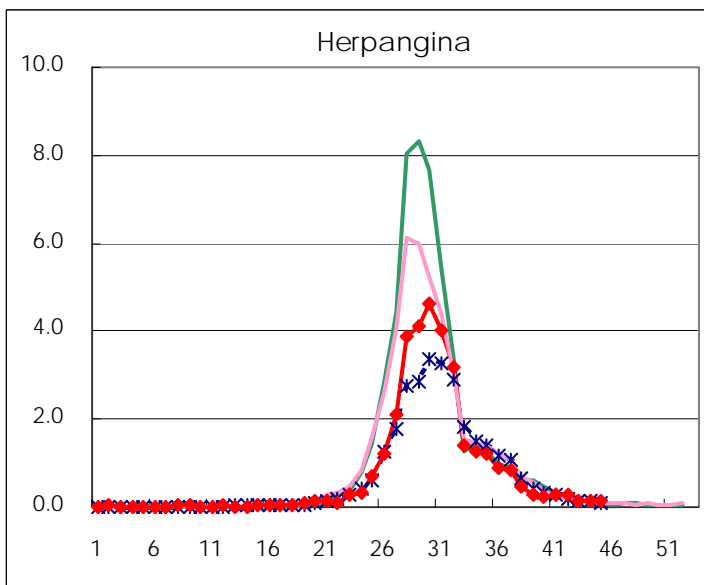
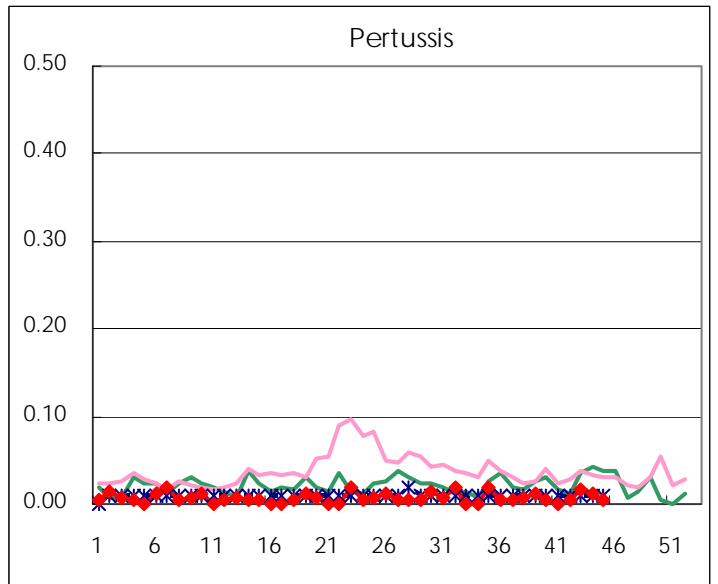
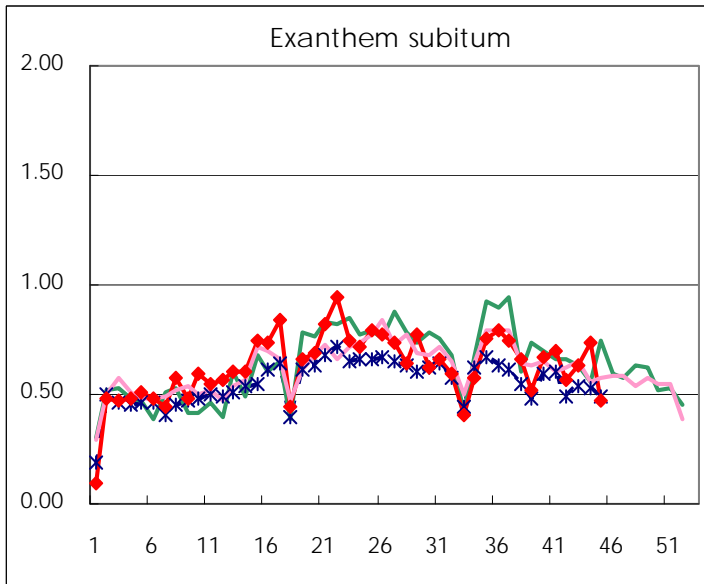
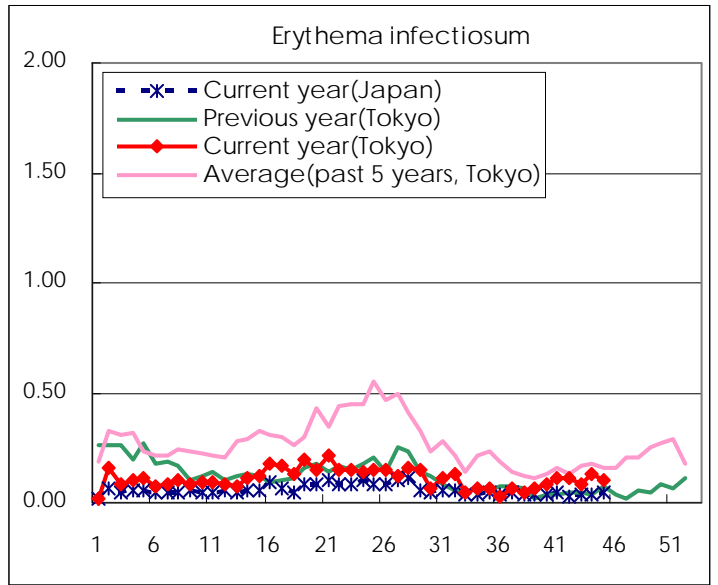
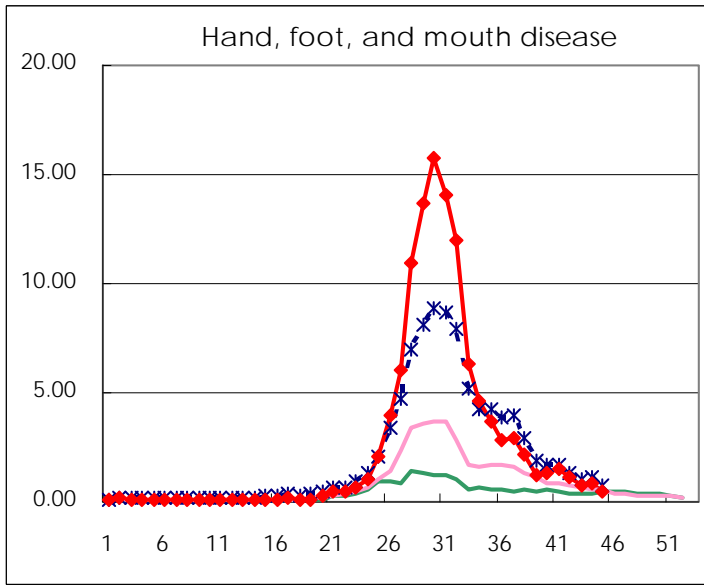
Number of patients with the diseases to be reported  
by the designated clinics and hospitals

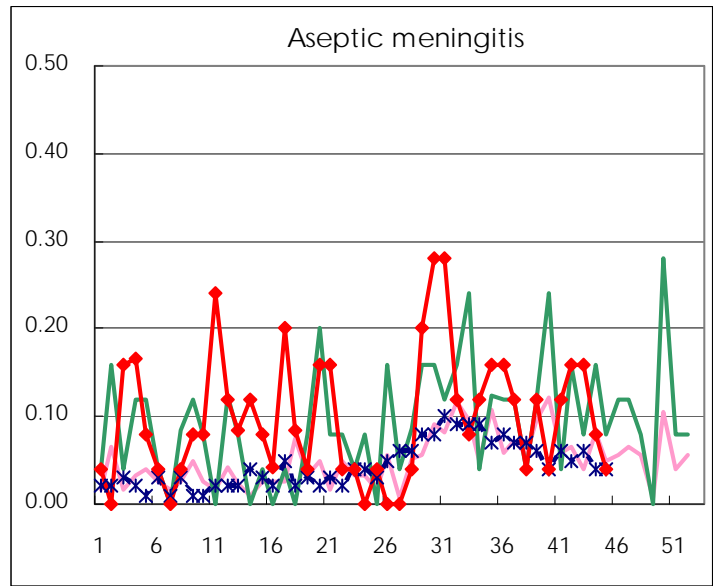
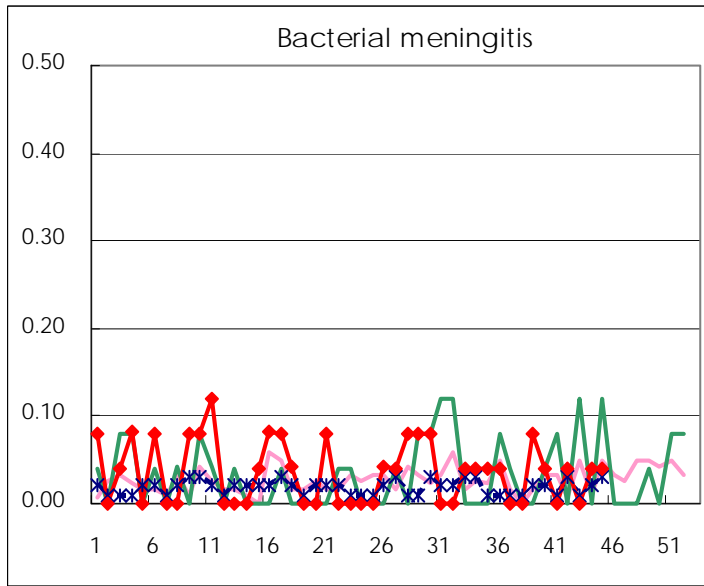
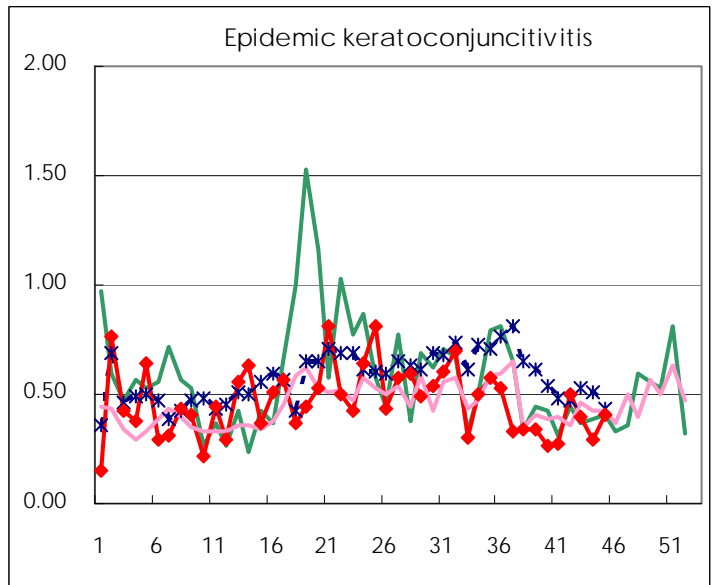
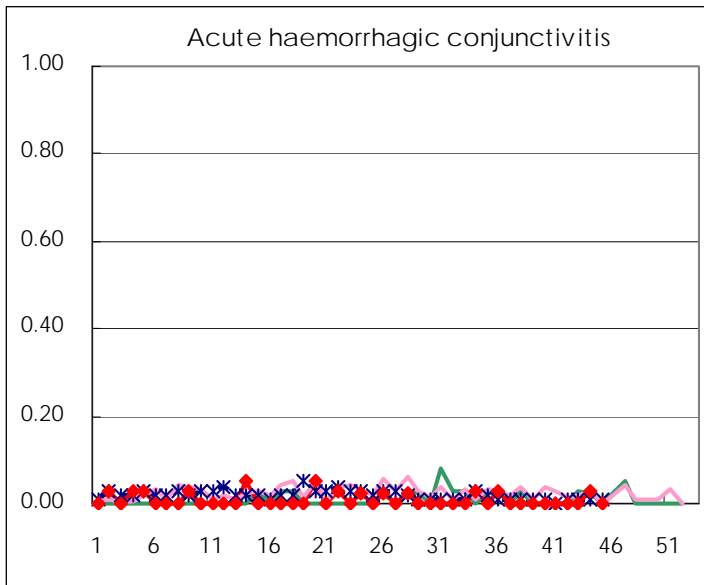
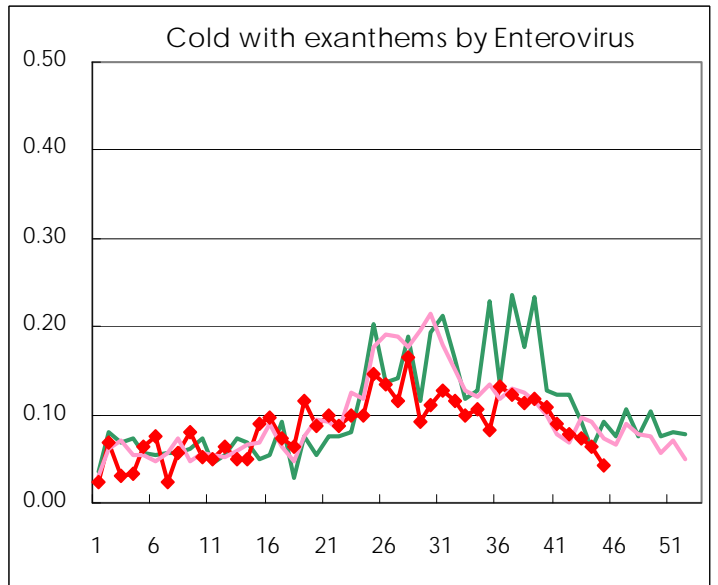
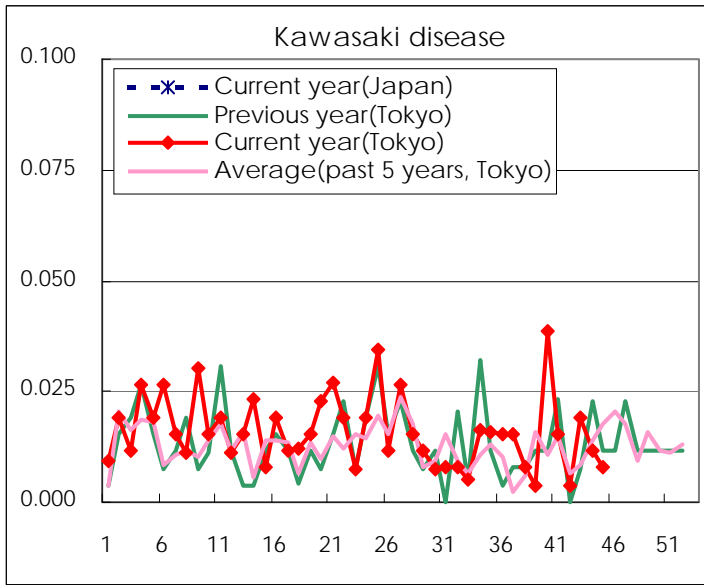
Diseases	Tokyo				
	43rd	44th	45th	46th	/sentinel
Respiratory syncytial virus infection	271	274	291	236	0.91
Pharyngoconjunctival fever	48	70	71	74	0.29
Group A streptococcal pharyngitis	195	292	320	303	1.17
Infectious gastroenteritis	815	930	1,146	1,169	4.53
Chickenpox	140	133	179	171	0.66
Hand, foot, and mouth disease	296	196	212	125	0.48
Erythema infectiosum	28	22	33	27	0.10
Exanthem subitum	146	165	187	122	0.47
Pertussis	1	4	3	1	0.00
Herpangina	67	36	32	33	0.13
Mumps	46	30	49	40	0.16
Kawasaki disease	1	5	3	2	0.01
Cold with exanthems by Enterovirus	20	19	16	11	0.04
Influenza	7	39	35	53	0.13
Acute hemorrhagic conjunctivitis			1		
Epidemic keratoconjunctivitis	19	15	11	15	0.41
Bacterial meningitis	1		1	1	0.04
Aseptic meningitis	4	4	2	1	0.04
Mycoplasma pneumonia	7	10	6	5	0.20
Chlamydial pneumonia (excluding psittacosis)					
Infectious gastroenteritis (only by Rotavirus)	1			1	0.04
Influenza-Associated Hospitalizations		1			

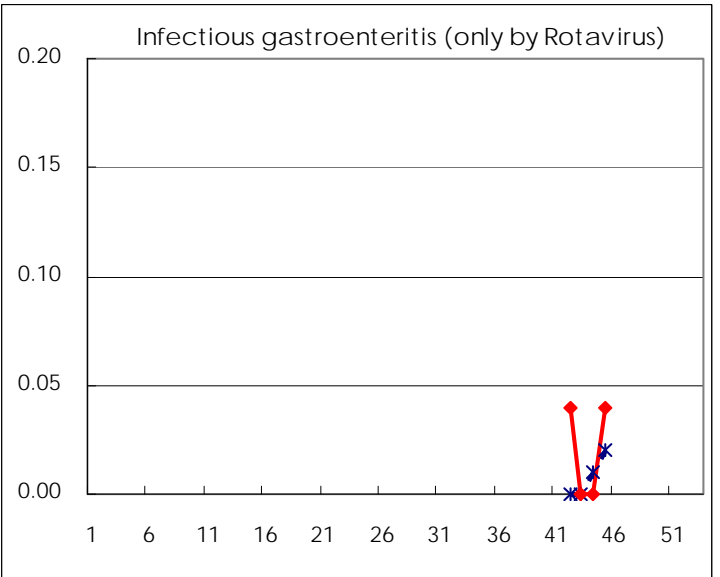
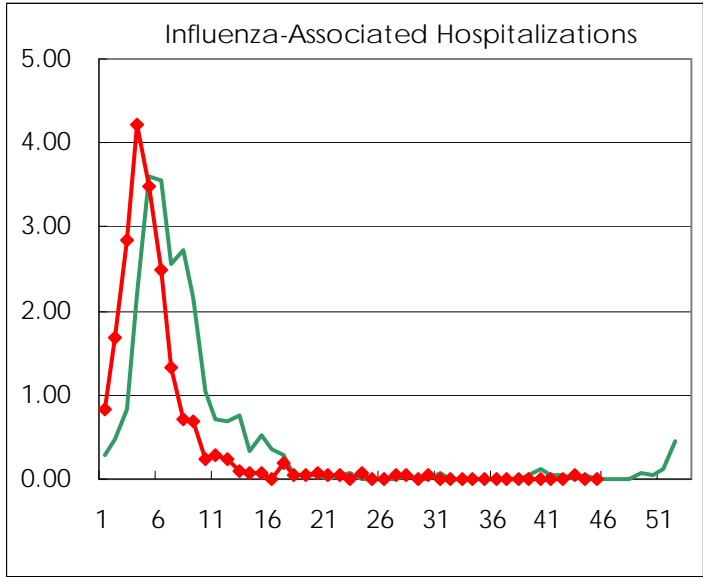
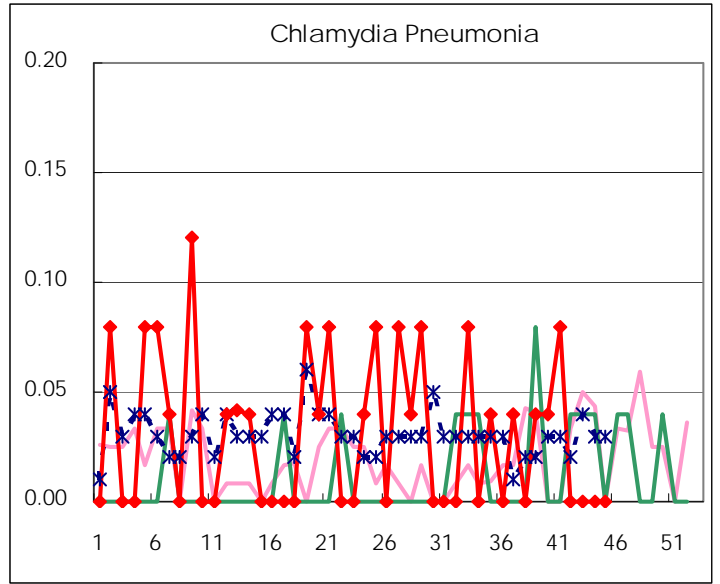
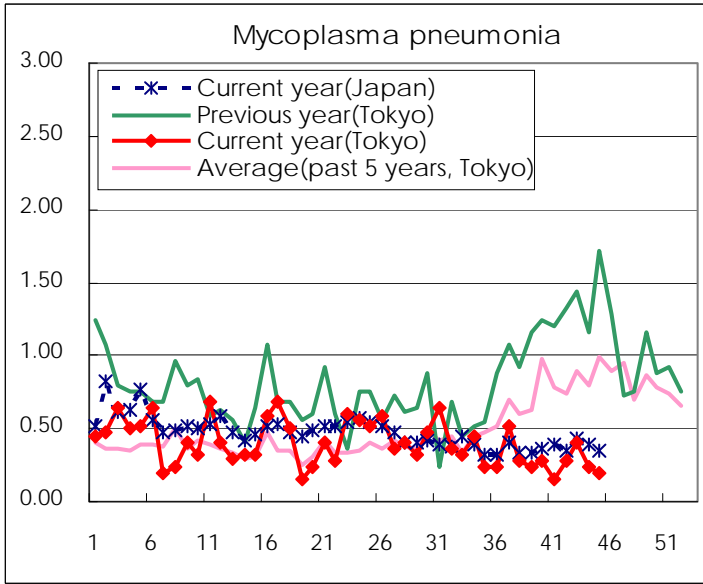
( Blank means 0. )

# Disease Trend Graph (weekly reported cases per sentinel in comparison)









Number of sentinel facilities for weekly reporting		
Types of sentinels	Number of sentinels	Sentinels having reported
Pediatric	264	258
Influenza	419	410
Ophthalmic	39	37
Specially-designated	25	25

Tokyo Metropolitan Government  
**Infectious Disease Surveillance Center**