
INFECTIOUS DISEASES WEEKLY REPORT

TOKYO IDWR

Tokyo Metropolitan Infectious Disease Surveillance Center

21 November 2013 / Number 46

Surveillance System in Tokyo, Japan

The infectious diseases which all physicians must report

All physicians must report to health centers the incidence of the diseases which are shown at page one. Health centers electronically report the individual cases to Tokyo Metropolitan Infectious Disease Surveillance Center.

The infectious diseases required to be reported by the sentinels

The numbers of patients who visit the sentinel clinics or hospitals during a week are reported to health centers in Tokyo. And they electronically report the numbers to Tokyo Metropolitan Infectious Disease Surveillance Center. We have about 500 sentinel clinics and hospitals in Tokyo.

1st Week is early January and 52nd Week is end of December.

Tokyo Metropolitan Institute of Public Health

TEL:81-3-3363-3213 FAX:81-3-5332-7365

e-mail:idsc@tokyo-eiken.go.jp

URL:idsc.tokyo-eiken.go.jp/

Number of patients with the diseases which all physicians must report

Category	Diseases	Tokyo					Japan	
		43rd	44th	45th	46th	Cum 2013	46th	Cum 2013
I	Ebola hemorrhagic fever							
	Crimean-Congo hemorrhagic fever							
	Smallpox							
	South American hemorrhagic fever							
	Plague							
	Marburg disease							
	Lassa fever							
II	Acute poliomyelitis							1
	Tuberculosis	82	98	65	80	3,552	381	23,373
	Diphtheria							
	Severe Acute Respiratory Syndrome(SARS)							
	Avian influenza H5N1							
※	Avian influenza H7N9							
III	Cholera							3
	Shigellosis			1		30	4	129
	Enterohemorrhagic Escherichia coli infection	16	8	3	8	369	48	3,696
	Typhoid fever	1				20		62
	Paratyphoid fever					18	1	45
IV	Hepatitis E		1	1		29	1	105
	West Nile fever							
	Hepatitis A					18		115
	Echinococcosis							16
	Yellow fever							
	Psittacosis					2		8
	Omsk hemorrhagic fever							
	Relapsing fever							1
	Kyasanur forest disease							
	Q fever					3		5
	Rabies							
	Coccidioidomycosis					3		3
	Monkeypox							
	Severe Fever with Thrombocytopenia Syndrome							42
	Hemorrhagic fever with renal syndrome							
	Western equine encephalitis							
	Tick-borne encephalitis							
	Anthrax							
	Chikungunya fever					3		11
	Scrub typhus(Tsutsugamushi disease)		1		1	7	26	206
	Dengue fever	1		1		63	1	222
	Eastern equine encephalitis							
	Avian influenza (excluding H5N1 and H7N9)							
	Nipah virus infection							
	Japanese spotted fever						4	151
	Japanese encephalitis							8
	Hantavirus pulmonary syndrome							
	Herpes B virus infection							
	Glanders							
	Brucellosis							2
	Venezuelan equine encephalitis							
	Hendra virus infection							
Epidemic typhus								
Botulism								
Malaria			2		9		44	
Tularemia								
Lyme disease					7		17	
Lyssavirus infection(excluding rabies)								
Rift valley fever								
Melioidosis					1		4	
Legionellosis	2	2	2	1	74	14	995	
Leptospirosis			1		5		26	
Rocky mountain spotted fever								

Category	Diseases	Tokyo					Japan	
		43rd	44th	45th	46th	Cum 2013	46th	Cum 2013
V	Amebiasis	4	3	6	2	164	12	925
	Viral hepatitis(excluding hepatitis A and E)		1	3		65	1	246
	Acute encephalitis(excluding JE and WNE)		1	1		42	2	312
	Cryptosporidiosis	2				7		18
	Creutzfeldt-Jakob disease			1	1	17	1	188
	Severe invasive streptococcal infections(TSLS)	1		2	1	32	1	182
	Acquired immunodeficiency syndrome (AIDS)	11	2	7	6	416	14	1,334
	Giardiasis			1		21	1	76
	Invasive <i>Haemophilus influenzae</i> disease					9	1	90
	Invasive meningococcal disease					10		18
	Invasive pneumococcal disease	2	6	3	1	84	18	728
	Meningococcal meningitis							2
	Congenital rubella syndrome	2	1			11		25
	Syphilis	11	8	6	11	378	18	1,075
	Tetanus					4		118
	Vancomycin-resistant <i>S. aureus</i> infection							
	Vancomycin-resistant <i>Enterococcus</i> infection					7		48
	Rubella	6	3	5	1	3,417	12	14,269
	Measles		1	2		63	1	213

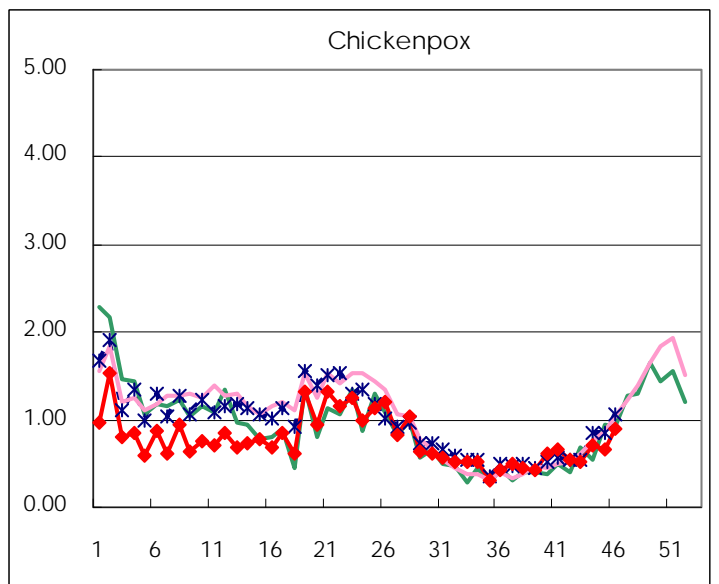
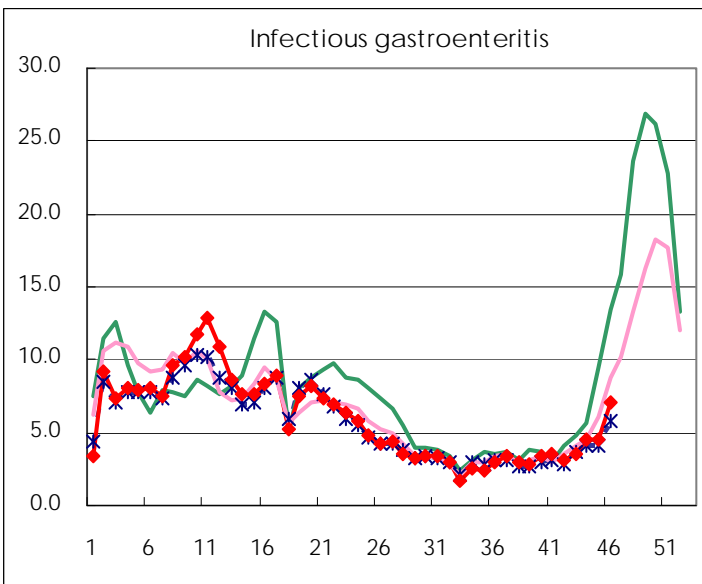
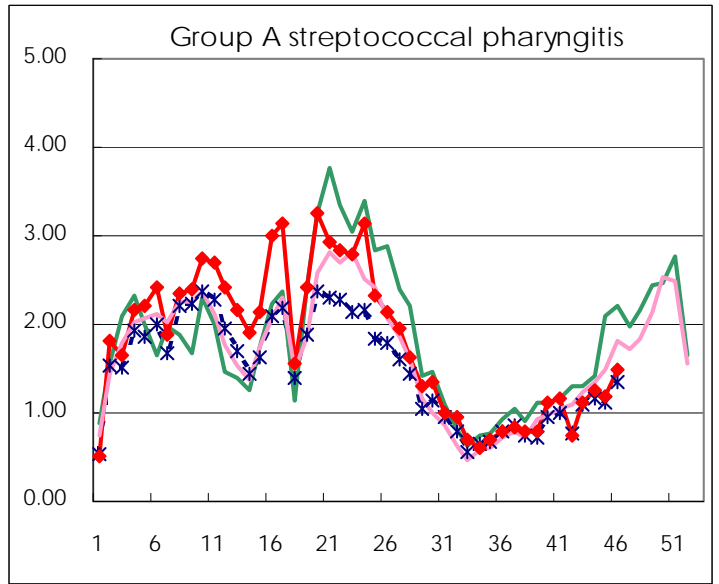
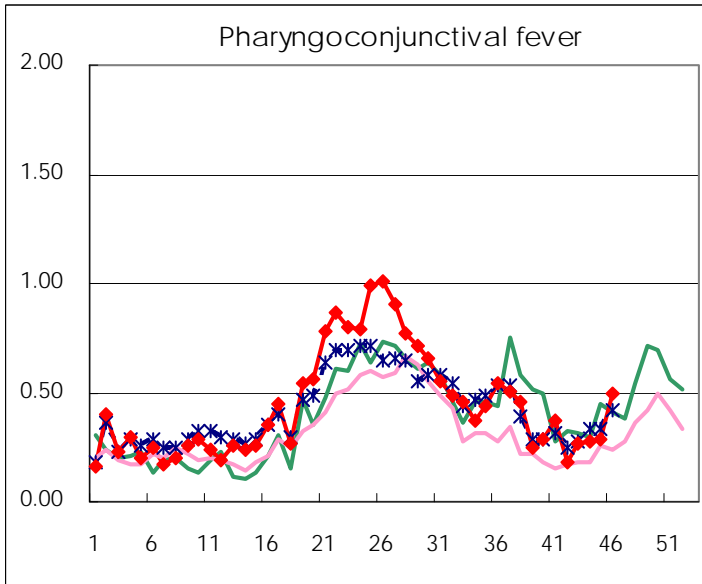
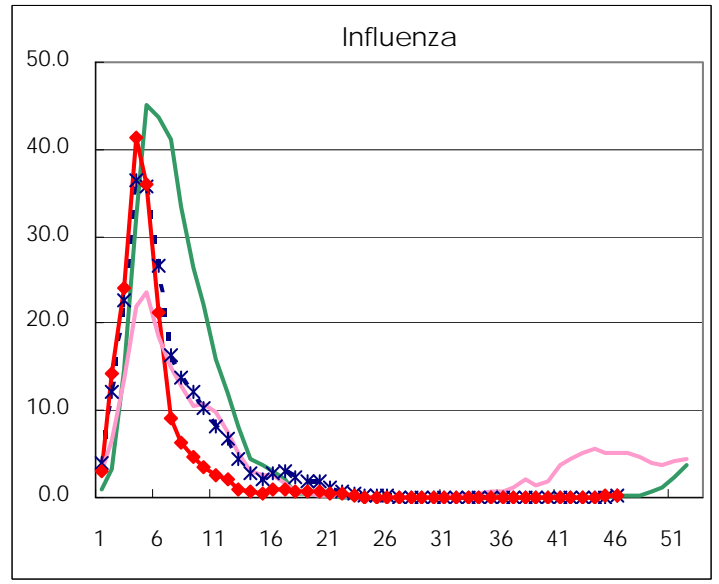
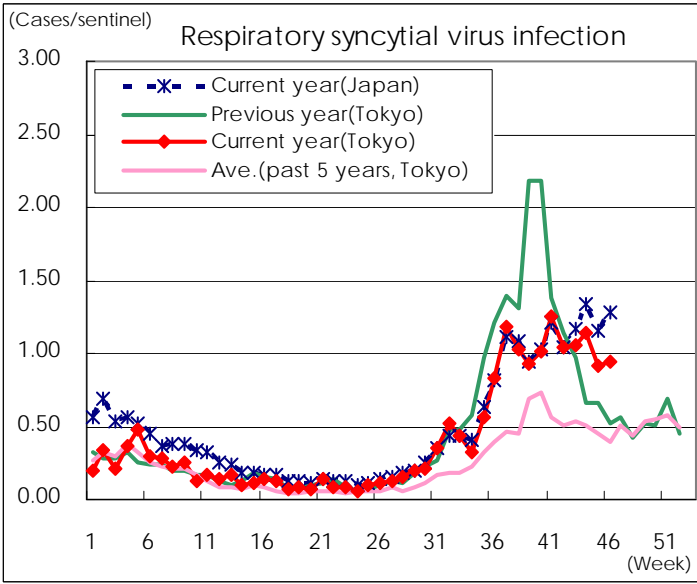
※ Designated infectious disease

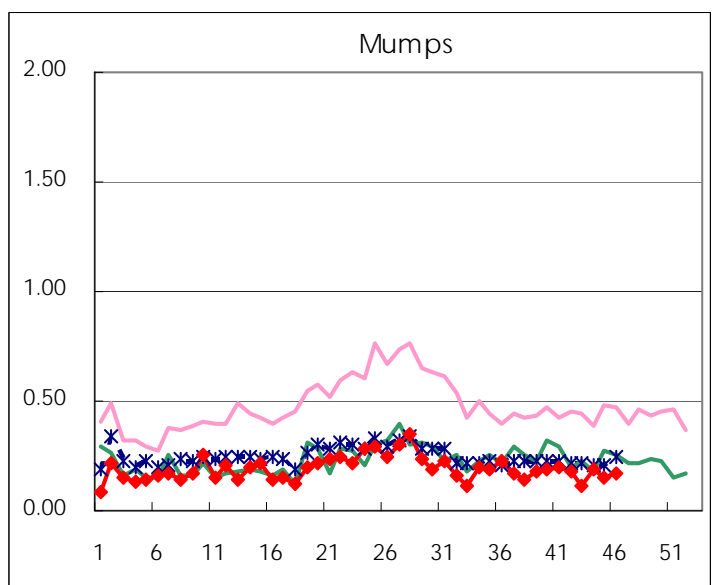
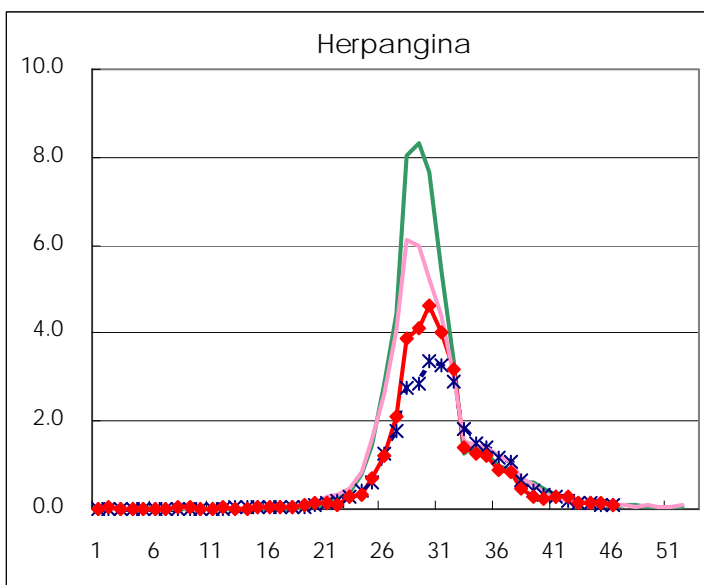
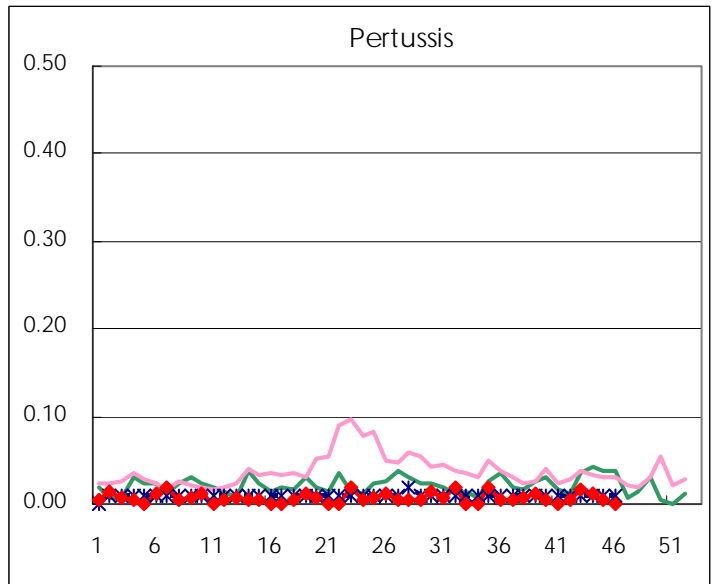
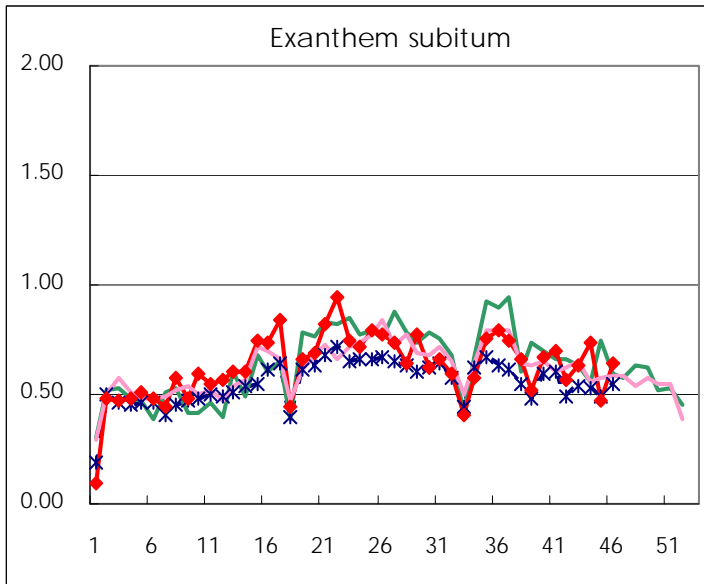
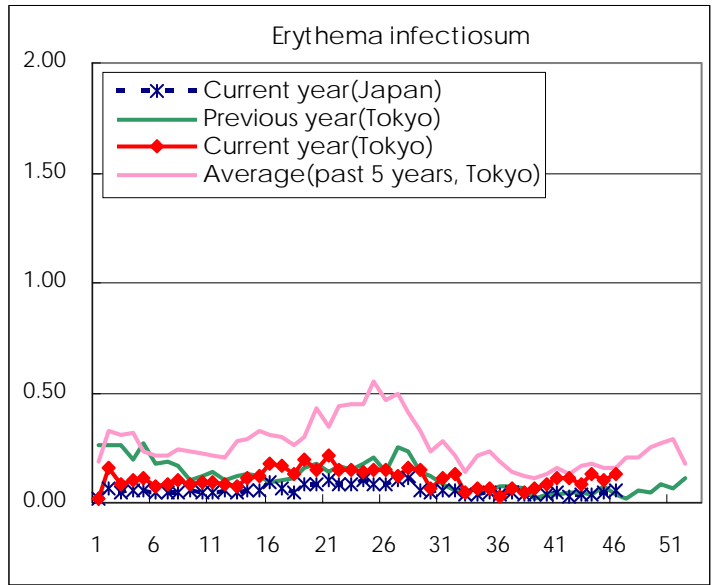
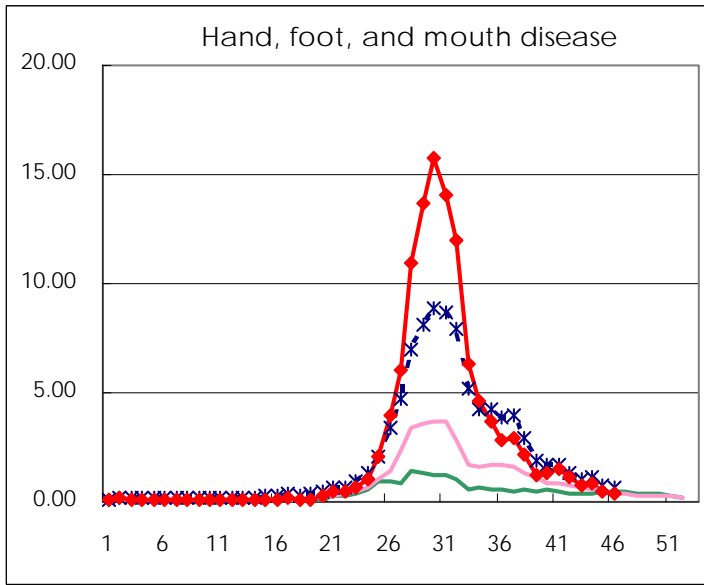
Number of patients with the diseases to be reported
by the designated clinics and hospitals

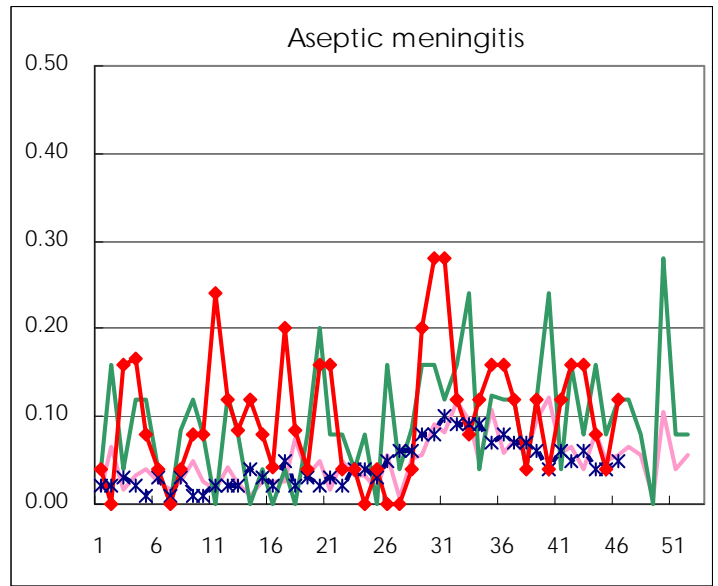
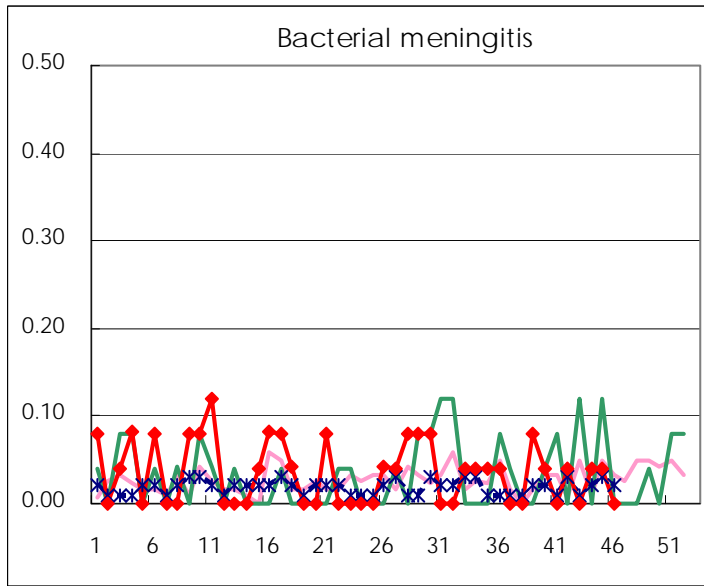
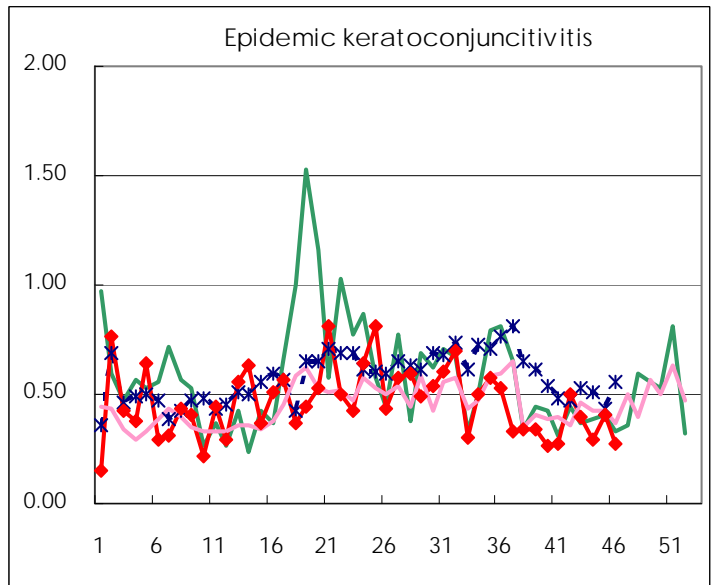
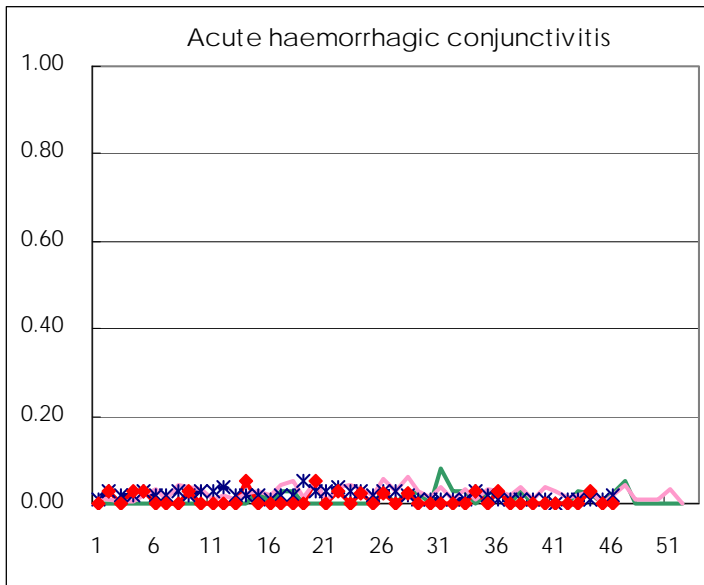
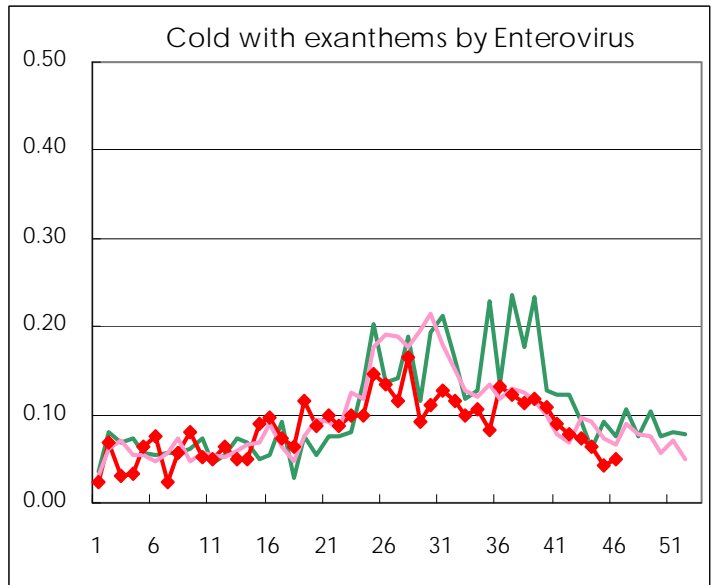
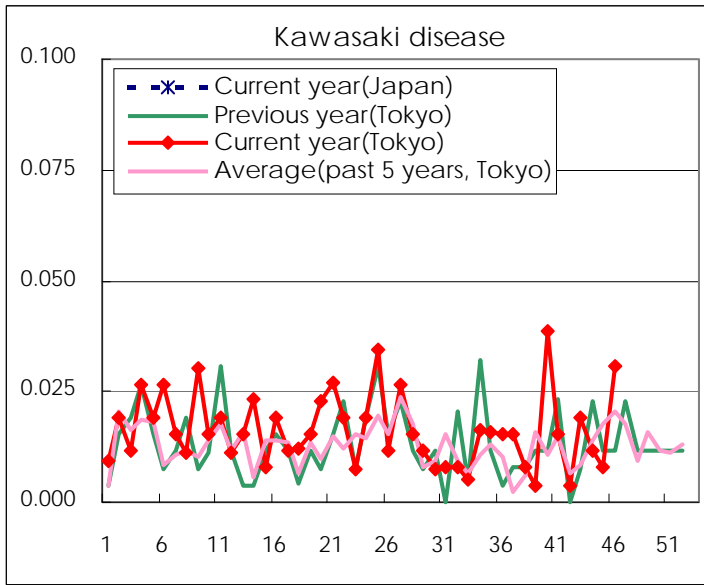
Diseases	Tokyo				
	43rd	44th	45th	46th	/sentinel
Respiratory syncytial virus infection	274	291	236	245	0.94
Pharyngoconjunctival fever	70	71	74	128	0.49
Group A streptococcal pharyngitis	292	320	303	386	1.48
Infectious gastroenteritis	930	1,146	1,169	1,840	7.08
Chickenpox	133	179	171	235	0.90
Hand, foot, and mouth disease	196	212	125	95	0.37
Erythema infectiosum	22	33	27	34	0.13
Exanthem subitum	165	187	122	168	0.65
Pertussis	4	3	1		
Herpangina	36	32	33	23	0.09
Mumps	30	49	40	44	0.17
Kawasaki disease	5	3	2	8	0.03
Cold with exantheams by Enterovirus	19	16	11	13	0.05
Influenza	39	35	54	52	0.13
Acute hemorrhagic conjunctivitis		1			
Epidemic keratoconjunctivitis	15	11	15	10	0.27
Bacterial meningitis		1	1		
Aseptic meningitis	4	2	1	3	0.12
Mycoplasma pneumonia	10	6	5	12	0.48
Chlamydial pneumonia (excluding psittacosis)				1	0.04
Infectious gastroenteritis (only by Rotavirus)			1		
Influenza-Associated Hospitalizations	1				

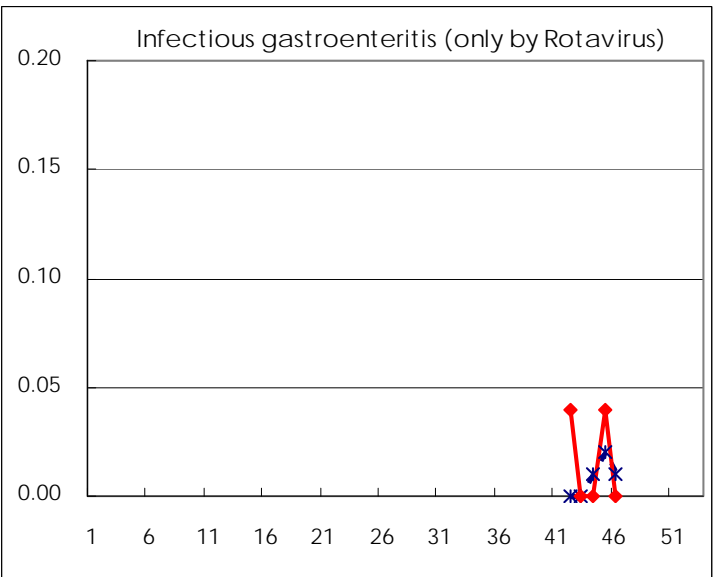
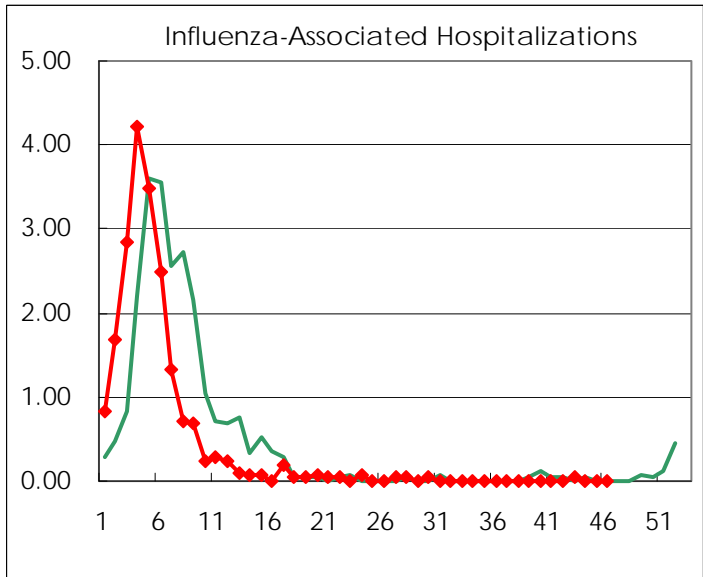
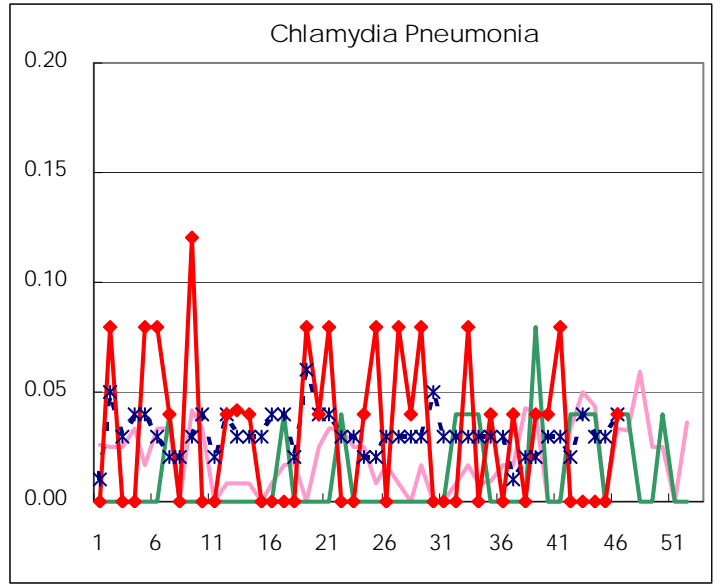
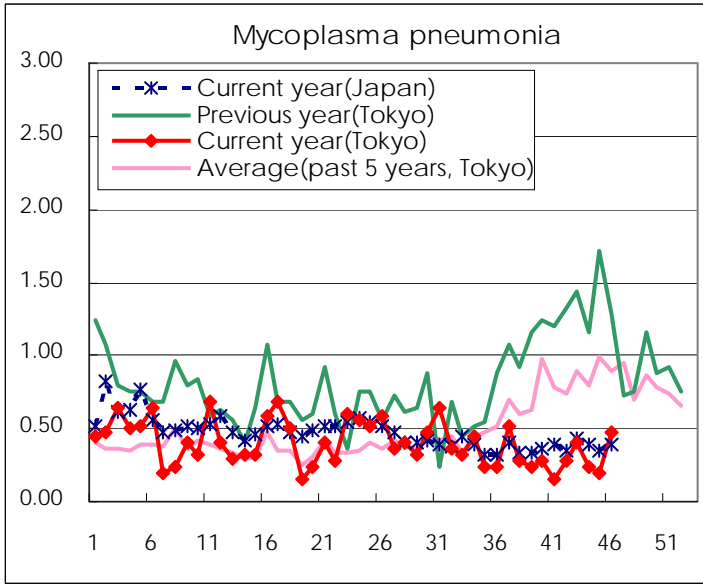
(Blank means 0.)

Disease Trend Graph (weekly reported cases per sentinel in comparison)









Number of sentinel facilities for weekly reporting		
Types of sentinels	Number of sentinels	Sentinels having reported
Pediatric	264	260
Influenza	419	412
Ophthalmic	39	37
Specially-designated	25	25

Tokyo Metropolitan Government
Infectious Disease Surveillance Center