

---

INFECTIOUS DISEASES WEEKLY REPORT

# TOKYO IDWR

Tokyo Metropolitan Infectious Disease Surveillance Center

## 28 November 2013 / Number 47

### Surveillance System in Tokyo, Japan

#### The infectious diseases which all physicians must report

All physicians must report to health centers the incidence of the diseases which are shown at page one. Health centers electronically report the individual cases to Tokyo Metropolitan Infectious Disease Surveillance Center.

#### The infectious diseases required to be reported by the sentinels

The numbers of patients who visit the sentinel clinics or hospitals during a week are reported to health centers in Tokyo. And they electronically report the numbers to Tokyo Metropolitan Infectious Disease Surveillance Center. We have about 500 sentinel clinics and hospitals in Tokyo.

1st Week is early January and 52nd Week is end of December.

Tokyo Metropolitan Institute of Public Health

TEL:81-3-3363-3213 FAX:81-3-5332-7365

e-mail:[idsc@tokyo-eiken.go.jp](mailto:idsc@tokyo-eiken.go.jp)

URL:[idsc.tokyo-eiken.go.jp/](http://idsc.tokyo-eiken.go.jp/)

---

## Number of patients with the diseases which all physicians must report

Category	Diseases	Tokyo				Japan		
		44th	45th	46th	47th	Cum 2013	47th	Cum 2013
I	Ebola hemorrhagic fever							
	Crimean-Congo hemorrhagic fever							
	Smallpox							
	South American hemorrhagic fever							
	Plague							
	Marburg disease							
	Lassa fever							
II	Acute poliomyelitis							1
	Tuberculosis	98	68	89	79	3,643	356	23,890
	Diphtheria							
	Severe Acute Respiratory Syndrome(SARS)							
	Avian influenza H5N1							
※	Avian influenza H7N9							
III	Cholera							3
	Shigellosis		1			30	2	131
	Enterohemorrhagic Escherichia coli infection	8	3	9	4	374	50	3,752
	Typhoid fever					20	1	63
	Paratyphoid fever				1	19	1	46
IV	Hepatitis E	1	1		1	30	3	109
	West Nile fever							
	Hepatitis A				1	19	2	117
	Echinococcosis							16
	Yellow fever							
	Psittacosis					2		8
	Omsk hemorrhagic fever							
	Relapsing fever							1
	Kyasanur forest disease							
	Q fever					3		5
	Rabies							
	Coccidioidomycosis					3	1	4
	Monkeypox							
	Severe Fever with Thrombocytopenia Syndrome							42
	Hemorrhagic fever with renal syndrome							
	Western equine encephalitis							
	Tick-borne encephalitis							
	Anthrax							
	Chikungunya fever					3	1	12
	Scrub typhus(Tsutsugamushi disease)	1		1	1	8	18	229
	Dengue fever		1			62	4	226
	Eastern equine encephalitis							
	Avian influenza (excluding H5N1 and H7N9)							
	Nipah virus infection							
	Japanese spotted fever						2	155
	Japanese encephalitis							8
	Hantavirus pulmonary syndrome							
	Herpes B virus infection							
	Glanders							
	Brucellosis							2
	Venezuelan equine encephalitis							
	Hendra virus infection							
	Epidemic typhus							
Botulism								
Malaria		2			9	1	45	
Tularemia								
Lyme disease					7	1	18	
Lyssavirus infection(excluding rabies)								
Rift valley fever								
Melioidosis					1		4	
Legionellosis	2	2	1		74	24	1,024	
Leptospirosis		1			5	1	27	
Rocky mountain spotted fever								

Category	Diseases	Tokyo					Japan	
		44th	45th	46th	47th	Cum 2013	47th	Cum 2013
V	Amebiasis	3	6	3	3	168	9	946
	Viral hepatitis(excluding hepatitis A and E)	1	3			65	2	251
	Acute encephalitis(excluding JE and WNE)	1	1		1	43	1	314
	Cryptosporidiosis					7		18
	Creutzfeldt-Jakob disease		1	1		17	1	189
	Severe invasive streptococcal infections(TSLS)		2	1	1	33	2	186
	Acquired immunodeficiency syndrome (AIDS)	2	7	6	9	425	16	1,367
	Giardiasis		1			21		77
	Invasive <i>Haemophilus influenzae</i> disease				1	10	2	92
	Invasive meningococcal disease					10		19
	Invasive pneumococcal disease	6	3	1	1	85	21	765
	Meningococcal meningitis							2
	Congenital rubella syndrome	1			1	12		25
	Syphilis	8	6	11	3	381	11	1,093
	Tetanus					4		119
	Vancomycin-resistant <i>S. aureus</i> infection							
	Vancomycin-resistant <i>Enterococcus</i> infection					7		48
	Rubella	3	5	1	6	3,423	6	14,279
Measles	1	2			63	1	213	

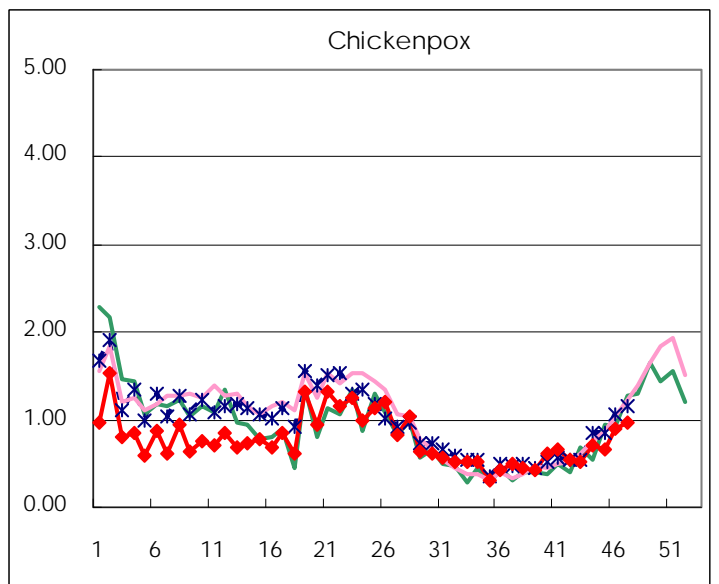
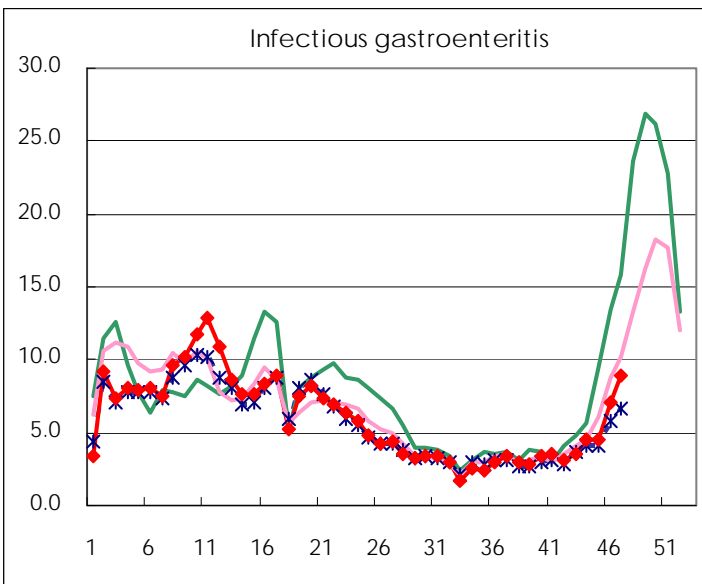
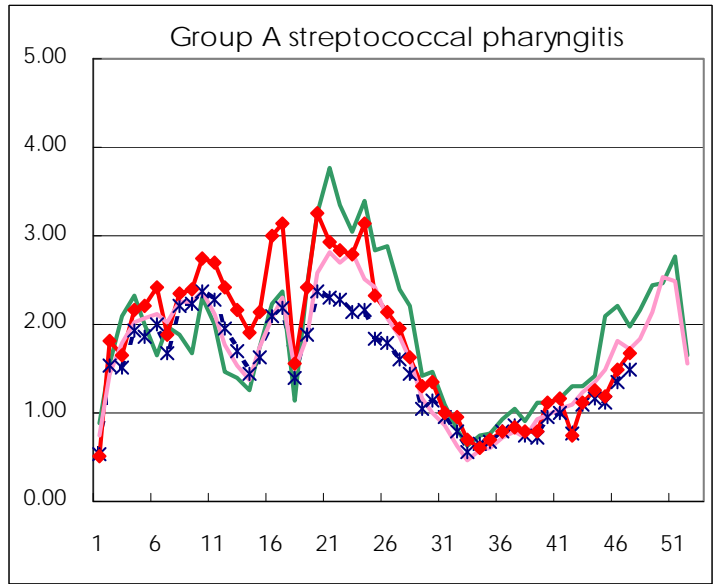
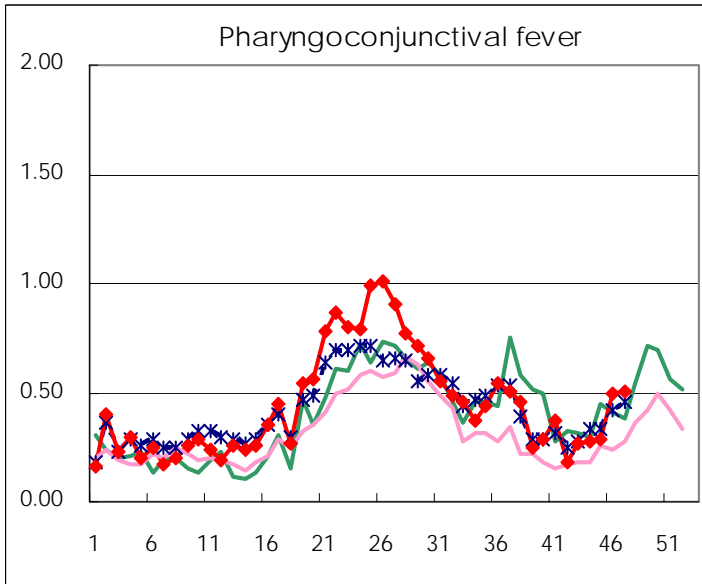
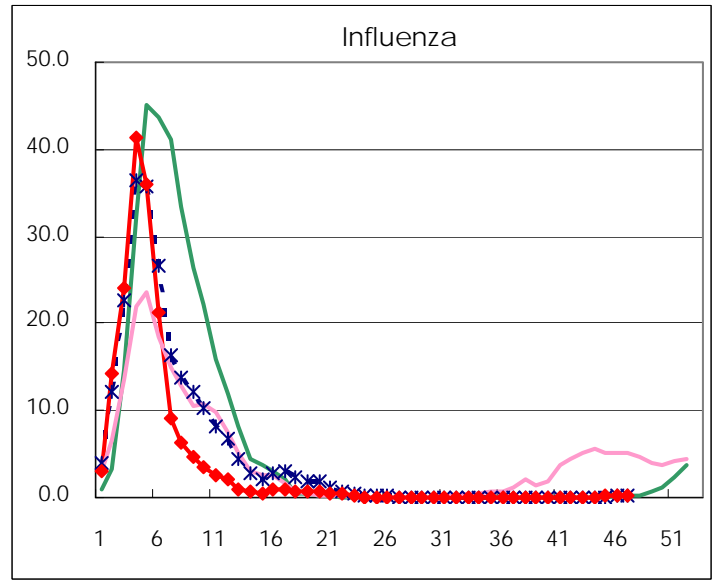
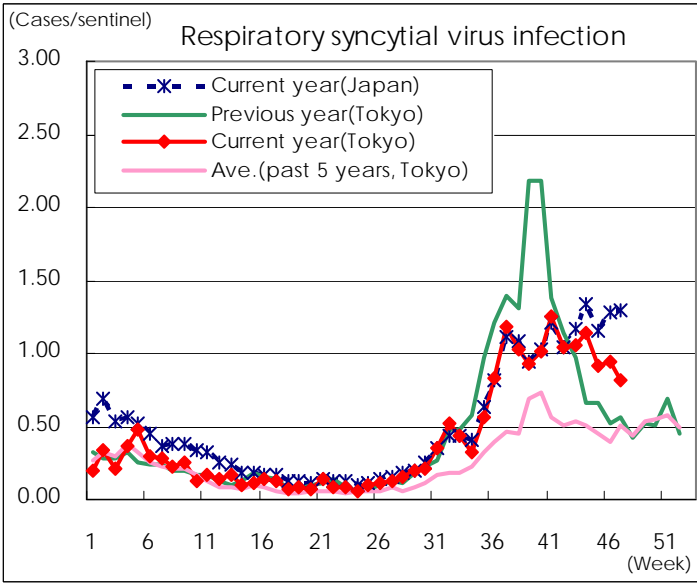
※ Designated infectious disease

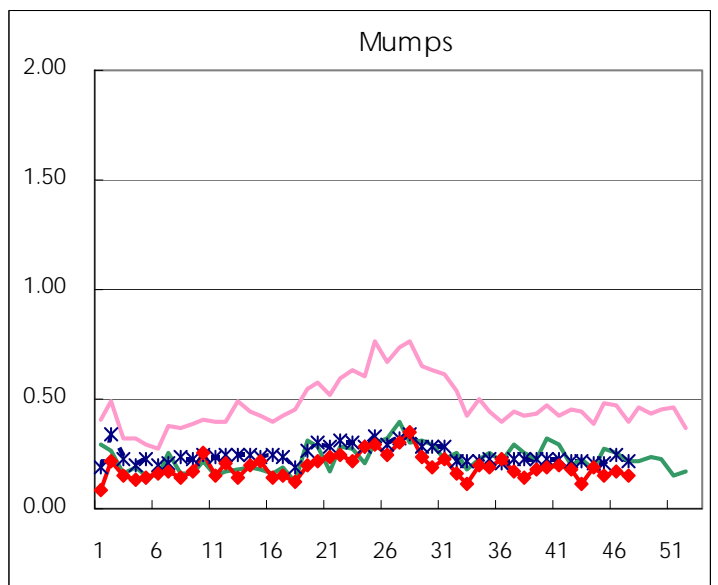
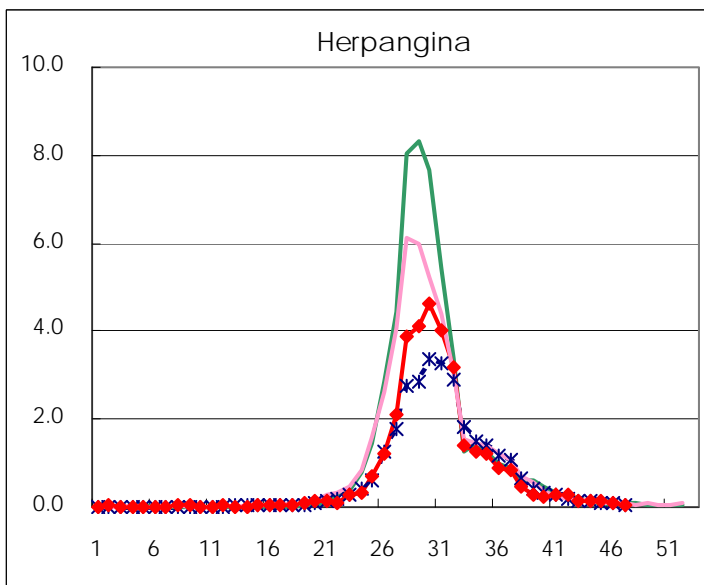
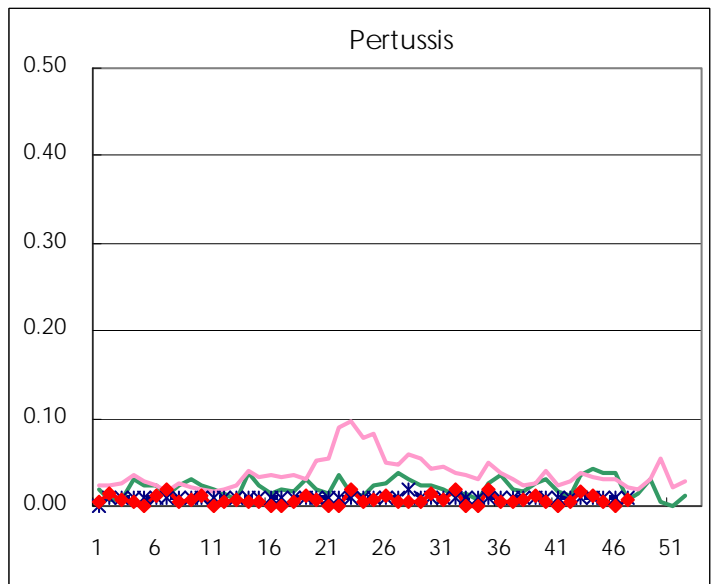
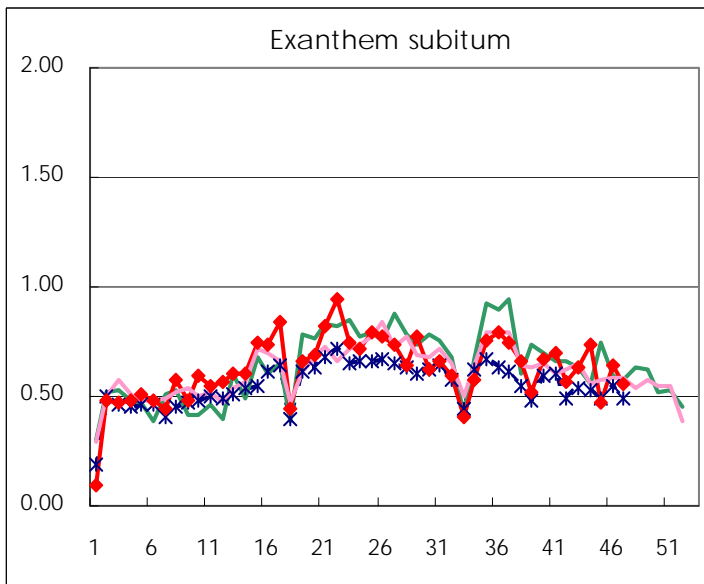
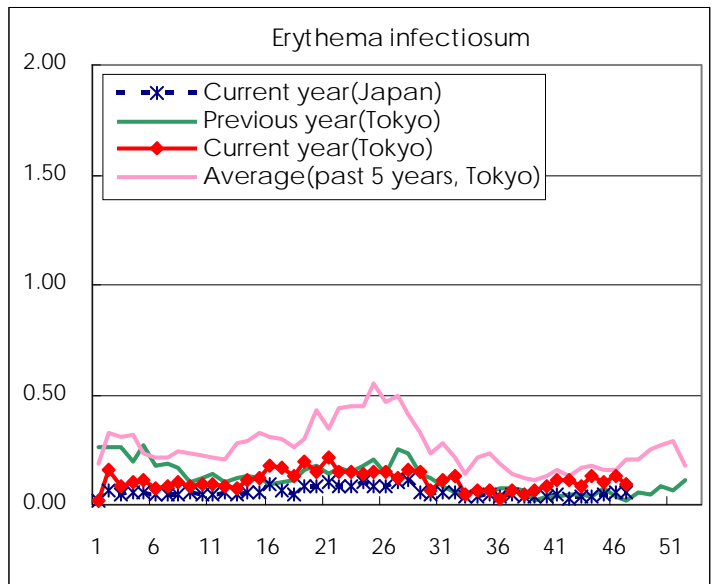
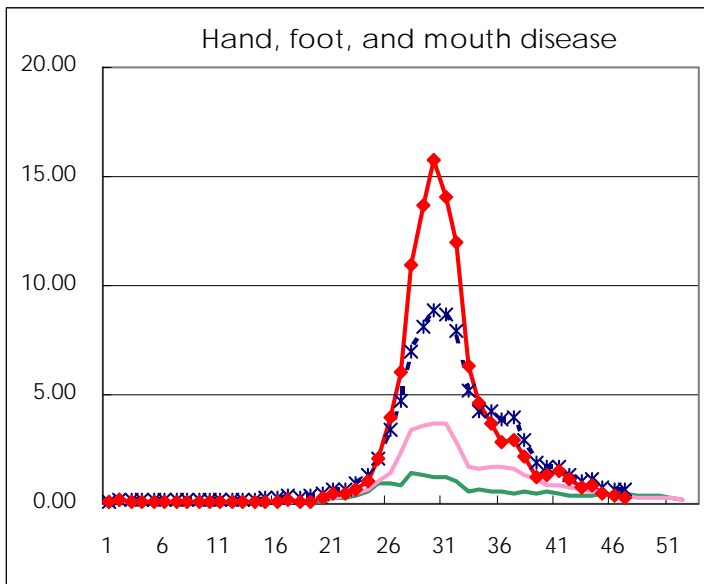
Number of patients with the diseases to be reported  
by the designated clinics and hospitals

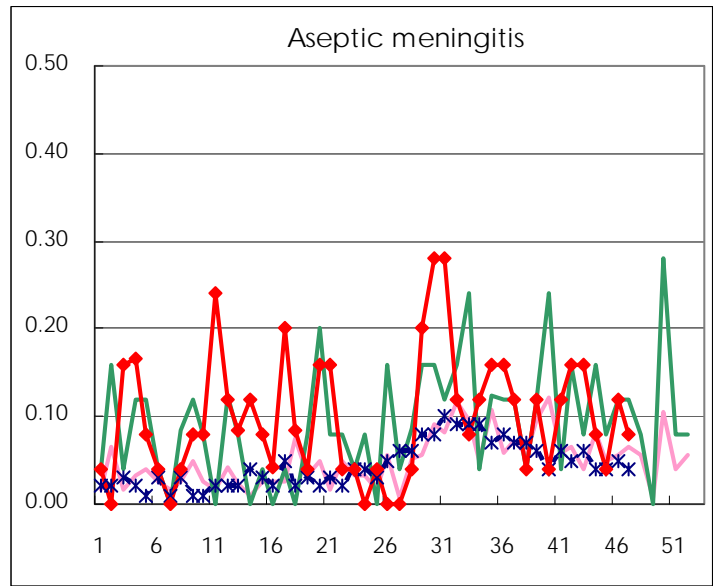
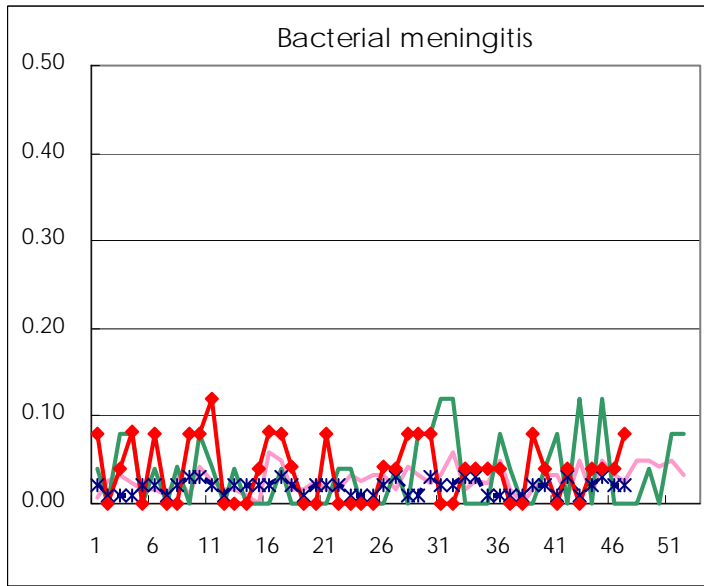
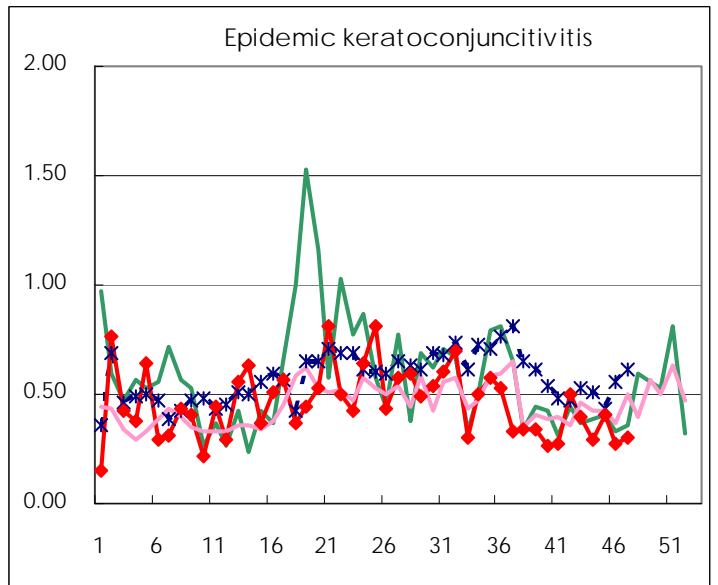
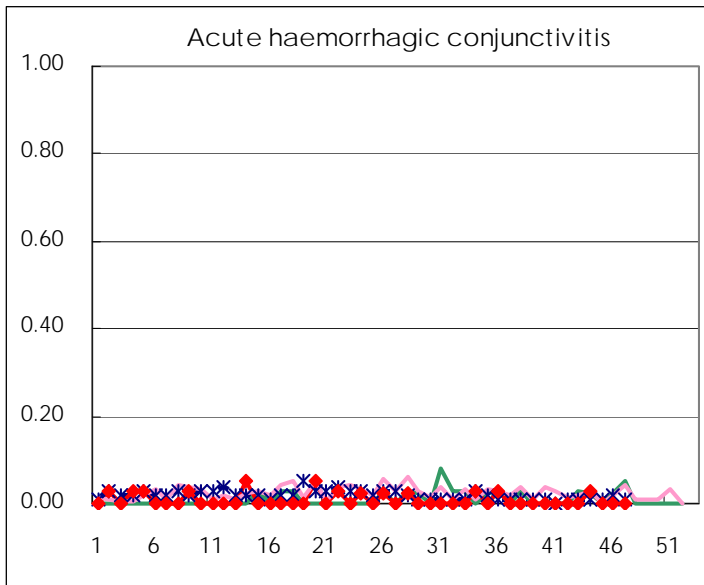
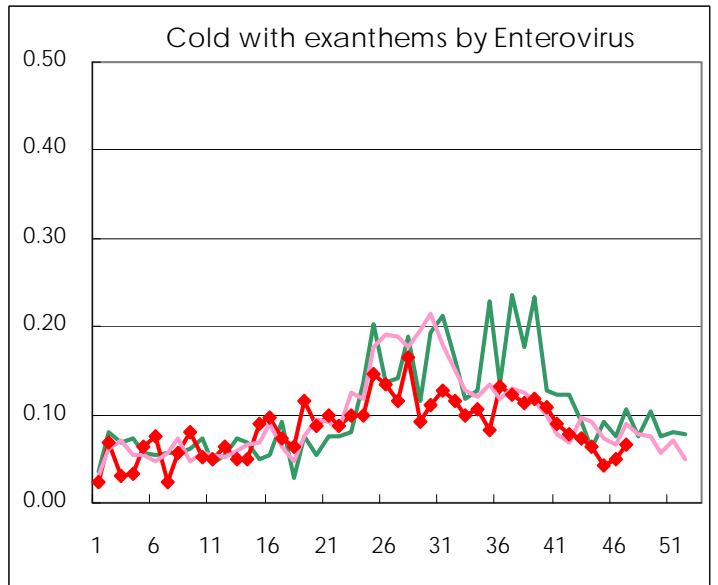
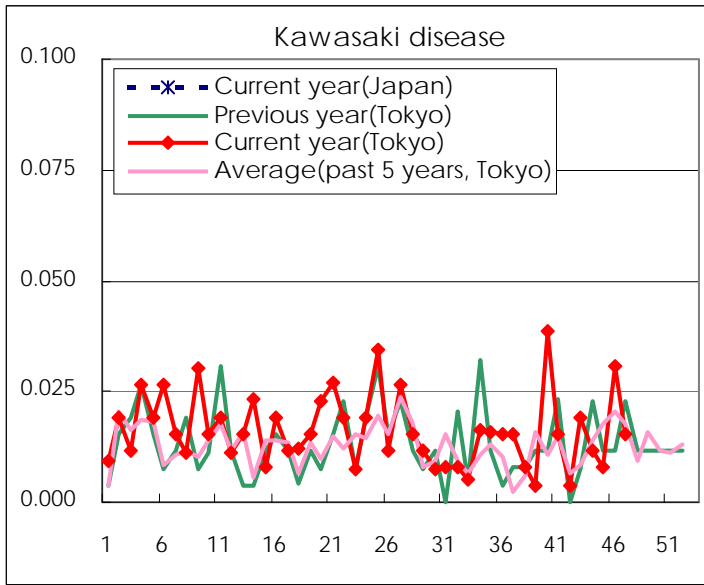
Diseases	Tokyo				
	44th	45th	46th	47th	/sentinel
Respiratory syncytial virus infection	291	236	245	213	0.82
Pharyngoconjunctival fever	71	74	128	130	0.50
Group A streptococcal pharyngitis	320	303	386	434	1.68
Infectious gastroenteritis	1,146	1,169	1,840	2,291	8.85
Chickenpox	179	171	235	252	0.97
Hand, foot, and mouth disease	212	125	95	64	0.25
Erythema infectiosum	33	27	34	24	0.09
Exanthem subitum	187	122	168	144	0.56
Pertussis	3	1		2	0.01
Herpangina	32	33	23	9	0.03
Mumps	49	40	44	40	0.15
Kawasaki disease	3	2	8	4	0.02
Cold with exanthems by Enterovirus	16	11	13	17	0.07
Influenza	35	54	52	123	0.30
Acute hemorrhagic conjunctivitis	1				
Epidemic keratoconjunctivitis	11	15	10	11	0.30
Bacterial meningitis	1	1	1	2	0.08
Aseptic meningitis	2	1	3	2	0.08
Mycoplasma pneumonia	6	5	12	13	0.52
Chlamydial pneumonia (excluding psittacosis)			1		
Infectious gastroenteritis (only by Rotavirus)		1		1	0.04
Influenza-Associated Hospitalizations				4	0.16

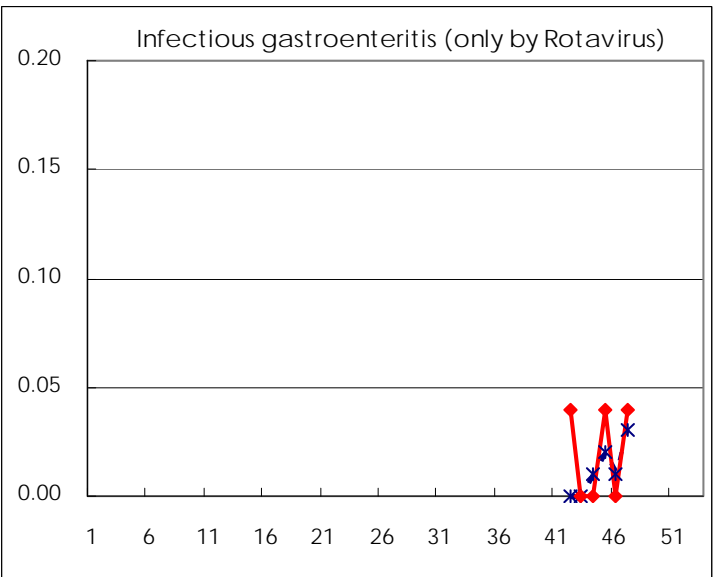
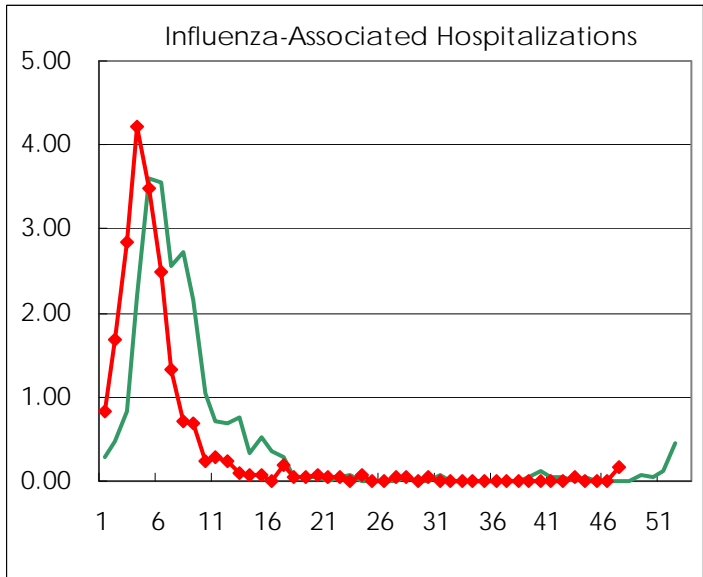
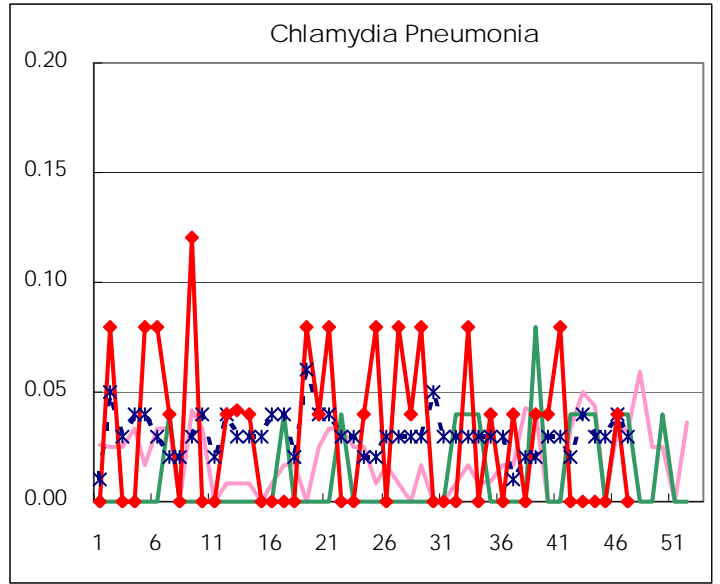
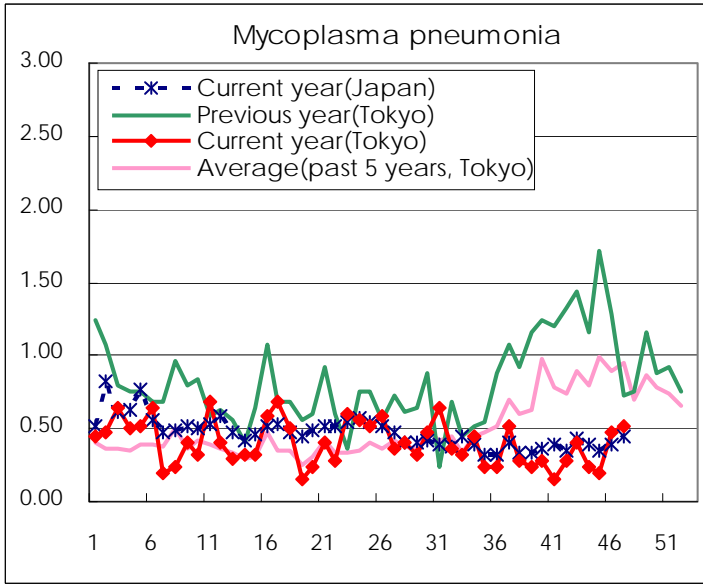
( Blank means 0. )

# Disease Trend Graph (weekly reported cases per sentinel in comparison)









Number of sentinel facilities for weekly reporting		
Types of sentinels	Number of sentinels	Sentinels having reported
Pediatric	264	259
Influenza	419	408
Ophthalmic	39	37
Specially-designated	25	25

Tokyo Metropolitan Government  
**Infectious Disease Surveillance Center**