
INFECTIOUS DISEASES WEEKLY REPORT

TOKYO IDWR

Tokyo Metropolitan Infectious Disease Surveillance Center

5 December 2013 / Number 48

Surveillance System in Tokyo, Japan

The infectious diseases which all physicians must report

All physicians must report to health centers the incidence of the diseases which are shown at page one. Health centers electronically report the individual cases to Tokyo Metropolitan Infectious Disease Surveillance Center.

The infectious diseases required to be reported by the sentinels

The numbers of patients who visit the sentinel clinics or hospitals during a week are reported to health centers in Tokyo. And they electronically report the numbers to Tokyo Metropolitan Infectious Disease Surveillance Center. We have about 500 sentinel clinics and hospitals in Tokyo.

1st Week is early January and 52nd Week is end of December.

Tokyo Metropolitan Institute of Public Health

TEL:81-3-3363-3213 FAX:81-3-5332-7365

e-mail:idsc@tokyo-eiken.go.jp

URL:idsc.tokyo-eiken.go.jp/

Number of patients with the diseases which all physicians must report

Category	Diseases	Tokyo				Japan		
		45th	46th	47th	48th	Cum 2013	48th	Cum 2013
I	Ebola hemorrhagic fever							
	Crimean-Congo hemorrhagic fever							
	Smallpox							
	South American hemorrhagic fever							
	Plague							
	Marburg disease							
	Lassa fever							
II	Acute poliomyelitis							1
	Tuberculosis	69	90	77	85	3,728	382	24,441
	Diphtheria							
	Severe Acute Respiratory Syndrome(SARS)							
	Avian influenza H5N1							
※	Avian influenza H7N9							
III	Cholera						1	4
	Shigellosis	1				30	1	132
	Enterohemorrhagic Escherichia coli infection	3	9	4	2	376	32	3,790
	Typhoid fever				1	21	1	64
	Paratyphoid fever			1		19		46
IV	Hepatitis E	1		1		30	1	110
	West Nile fever							
	Hepatitis A			1		19	2	119
	Echinococcosis						1	17
	Yellow fever							
	Psittacosis					2		8
	Omsk hemorrhagic fever							
	Relapsing fever							1
	Kyasanur forest disease							
	Q fever					3		5
	Rabies							
	Coccidioidomycosis				1	4		4
	Monkeypox							
	Severe Fever with Thrombocytopenia Syndrome						1	43
	Hemorrhagic fever with renal syndrome							
	Western equine encephalitis							
	Tick-borne encephalitis							
	Anthrax							
	Chikungunya fever				1	4		13
	Scrub typhus(Tsutsugamushi disease)		1	1	1	9	20	254
	Dengue fever	1			1	63	6	232
	Eastern equine encephalitis							
	Avian influenza (excluding H5N1 and H7N9)							
	Nipah virus infection							
	Japanese spotted fever						6	161
	Japanese encephalitis							8
	Hantavirus pulmonary syndrome							
	Herpes B virus infection							
	Glanders							
	Brucellosis							2
	Venezuelan equine encephalitis							
	Hendra virus infection							
Epidemic typhus								
Botulism								
Malaria	2			2	11	1	46	
Tularemia								
Lyme disease					7	1	19	
Lyssavirus infection(excluding rabies)								
Rift valley fever								
Melioidosis					1		4	
Legionellosis	2	1		2	76	18	1,050	
Leptospirosis	1				5		27	
Rocky mountain spotted fever								

Category	Diseases	Tokyo					Japan	
		45th	46th	47th	48th	Cum 2013	48th	Cum 2013
V	Amebiasis	6	3	3	2	170	14	962
	Viral hepatitis(excluding hepatitis A and E)	3	1		2	68	3	260
	Acute encephalitis(excluding JE and WNE)	1		1	1	44	7	327
	Cryptosporidiosis					7		18
	Creutzfeldt-Jakob disease	1	1		1	18		190
	Severe invasive streptococcal infections(TSLS)	2	1	1		33	4	191
	Acquired immunodeficiency syndrome (AIDS)	7	6	9	10	435	22	1,397
	Giardiasis	1				21	1	78
	Invasive <i>Haemophilus influenzae</i> disease			1		10	2	95
	Invasive meningococcal disease					10		19
	Invasive pneumococcal disease	3	1	1	3	88	20	802
	Meningococcal meningitis	/	/	/	/			2
	Congenital rubella syndrome			1		12	1	26
	Syphilis	6	11	3	12	393	21	1,123
	Tetanus					4	1	121
	Vancomycin-resistant <i>S. aureus</i> infection							
	Vancomycin-resistant Enterococcus infection					7		48
	Rubella	5	1	6	4	3,427	7	14,291
Measles	2		1	1	65	1	215	

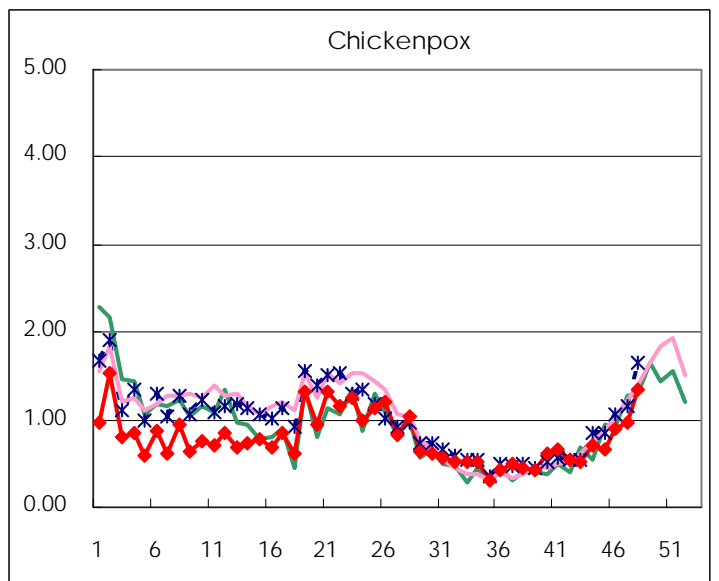
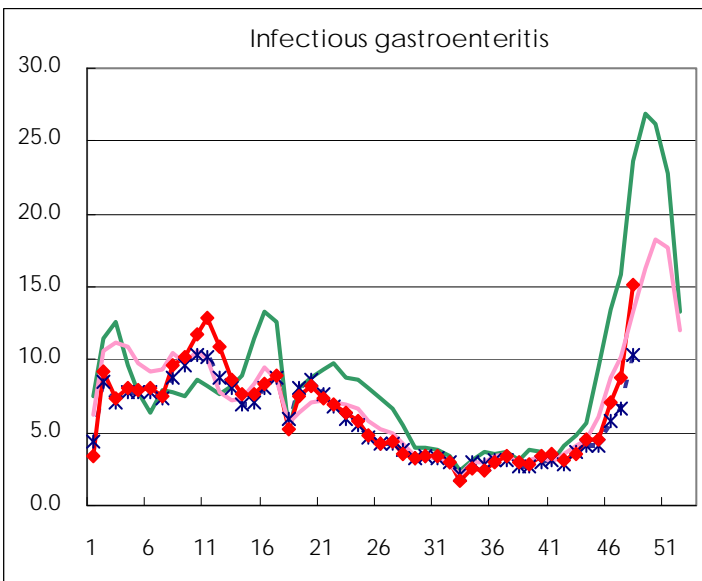
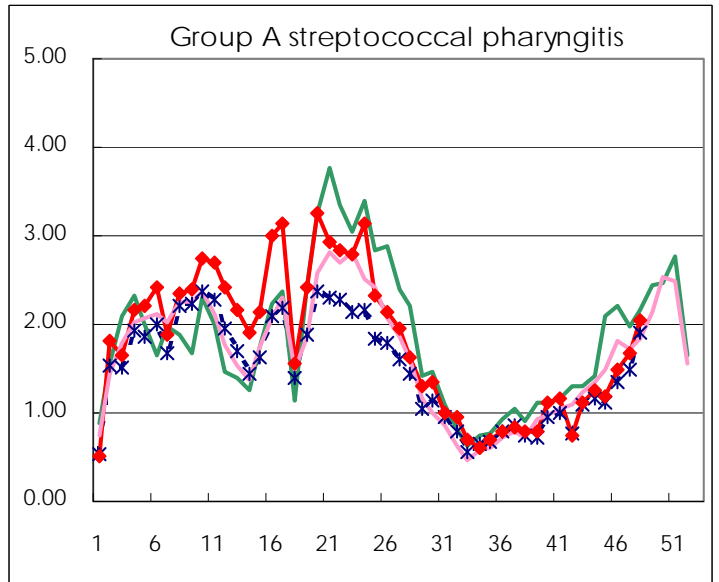
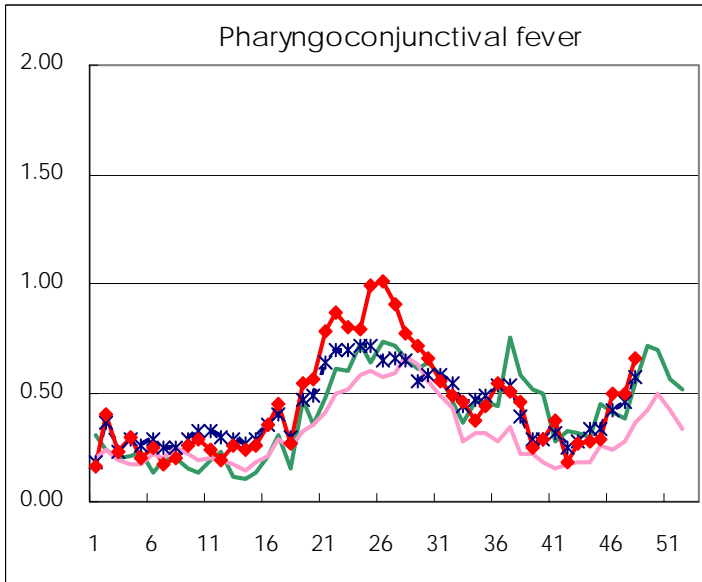
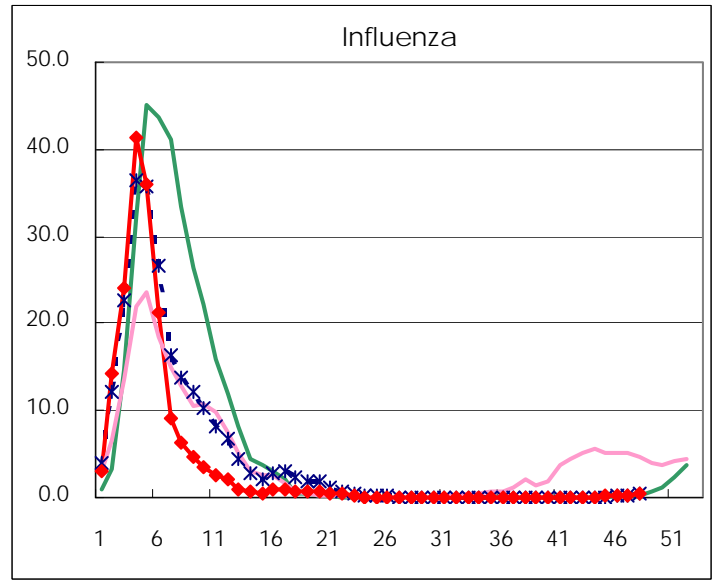
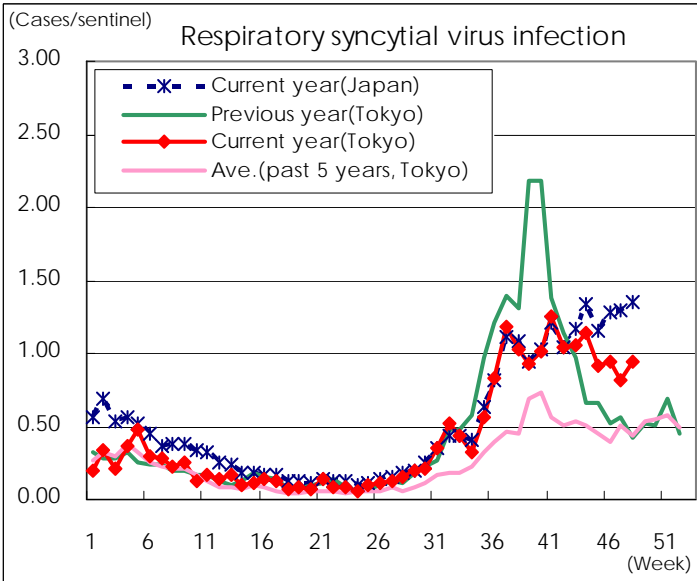
※ Designated infectious disease

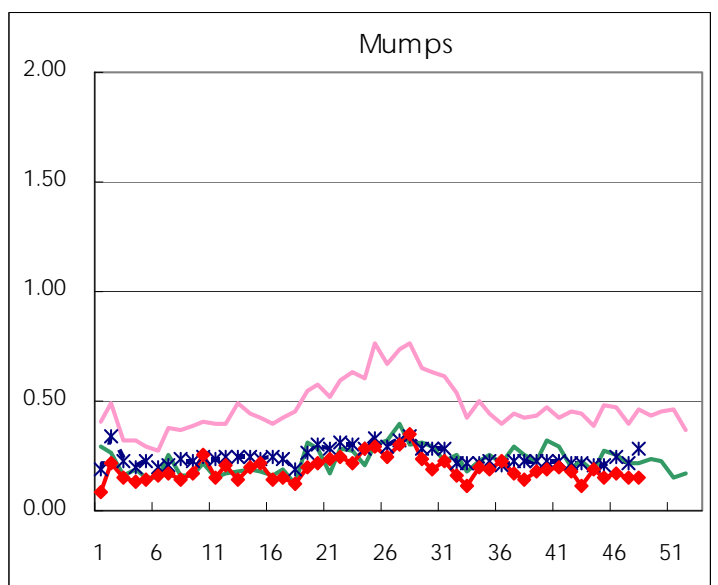
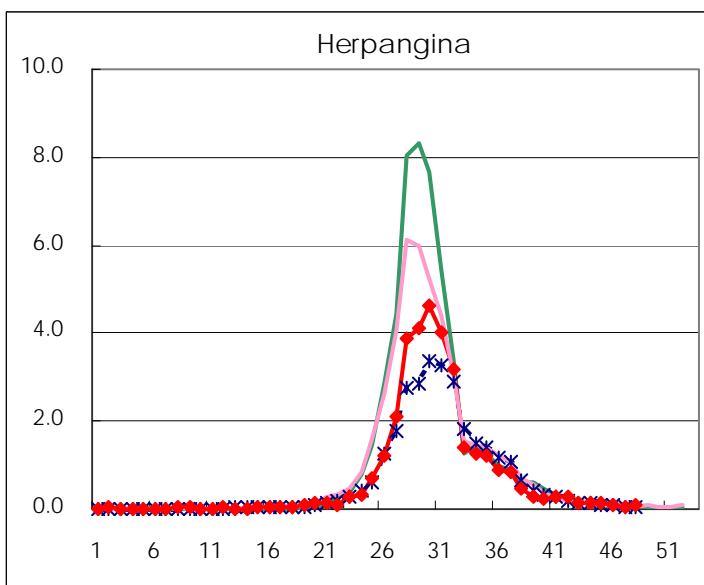
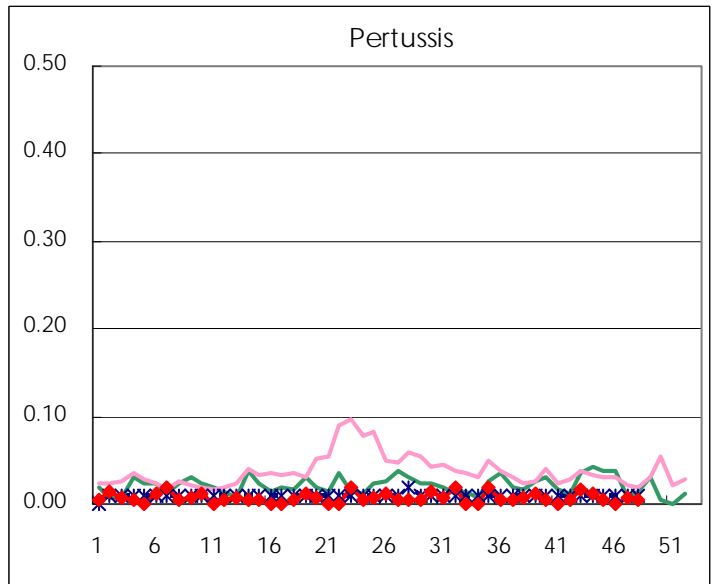
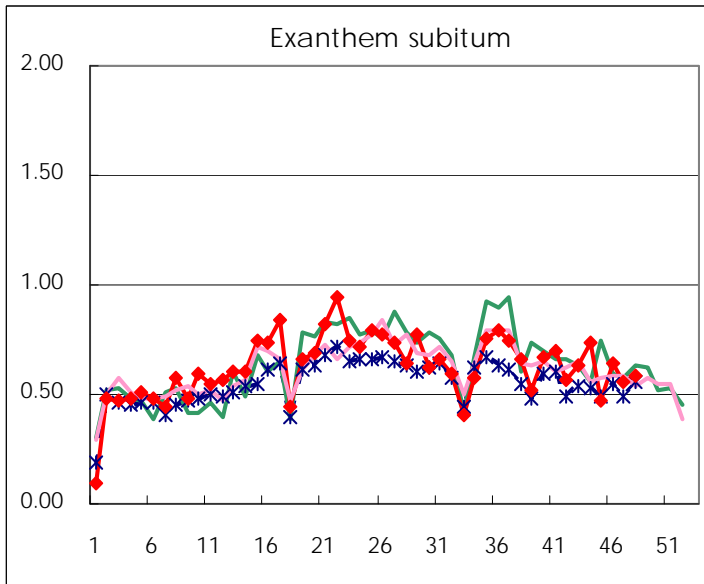
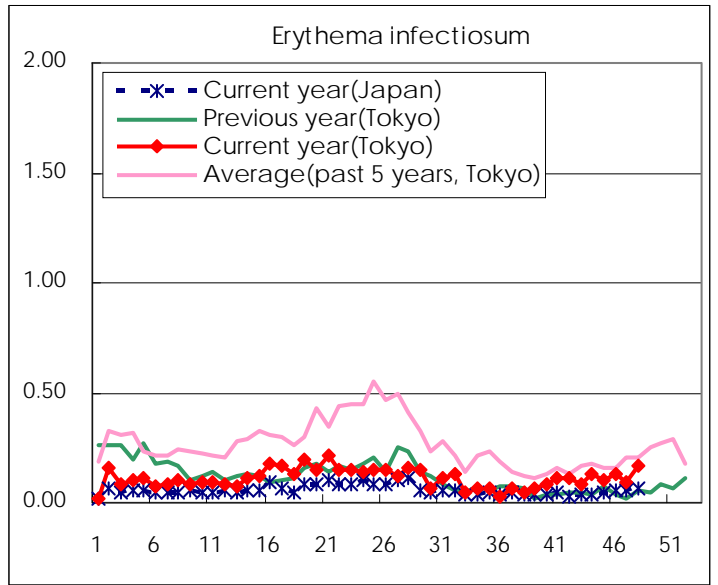
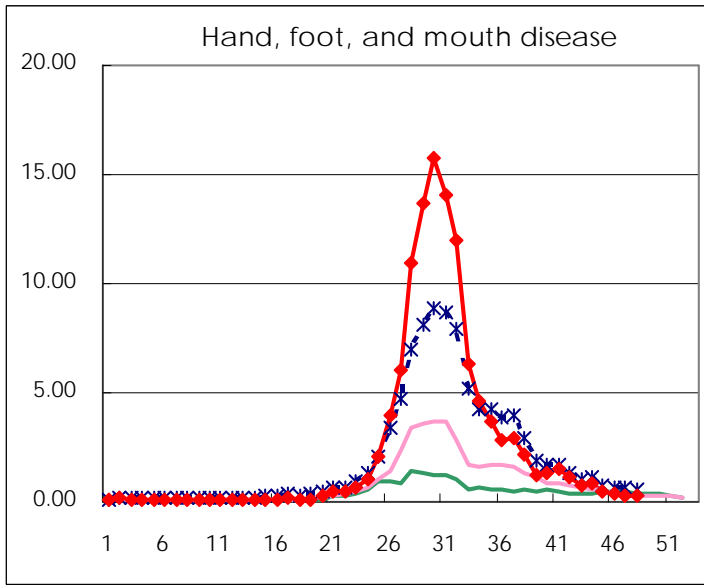
Number of patients with the diseases to be reported
by the designated clinics and hospitals

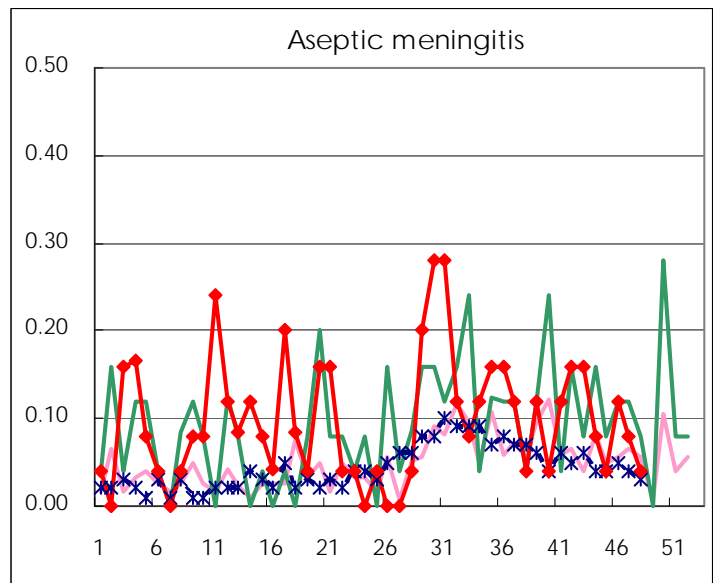
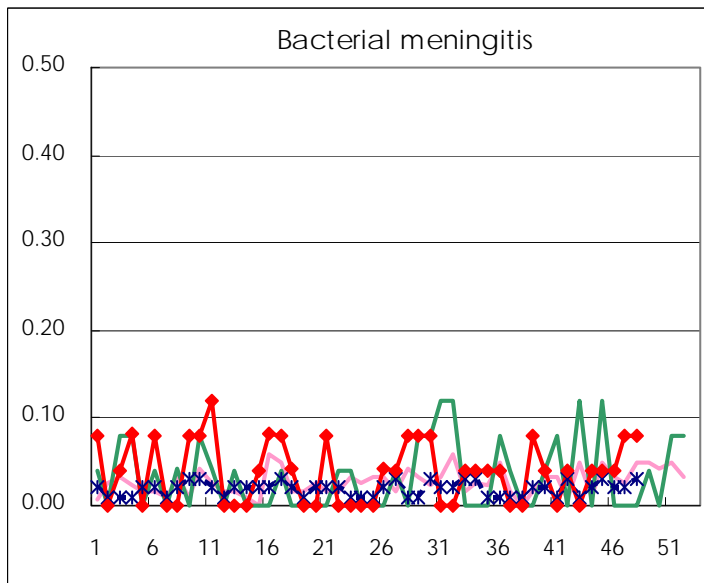
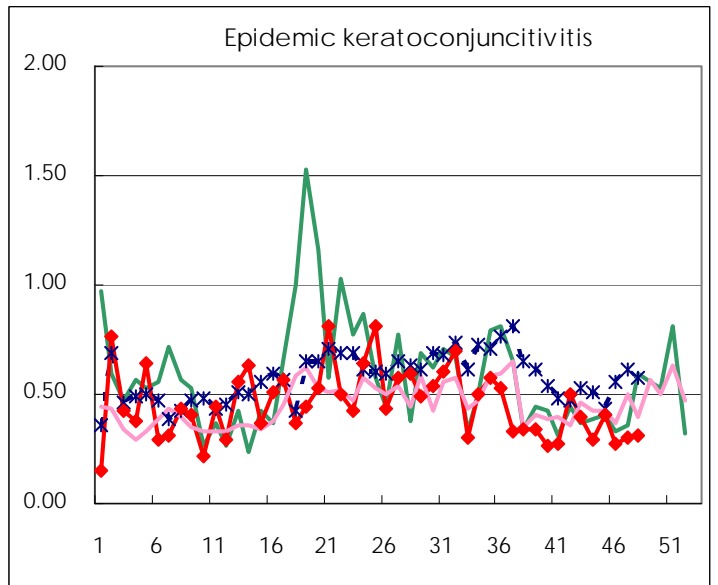
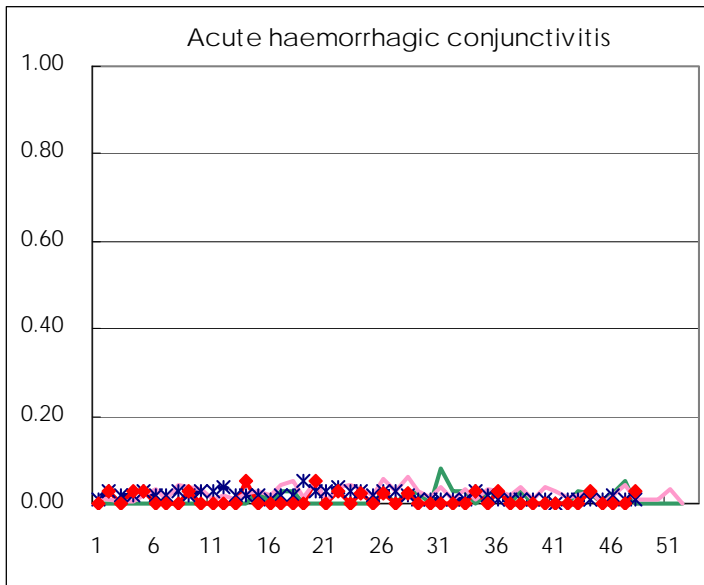
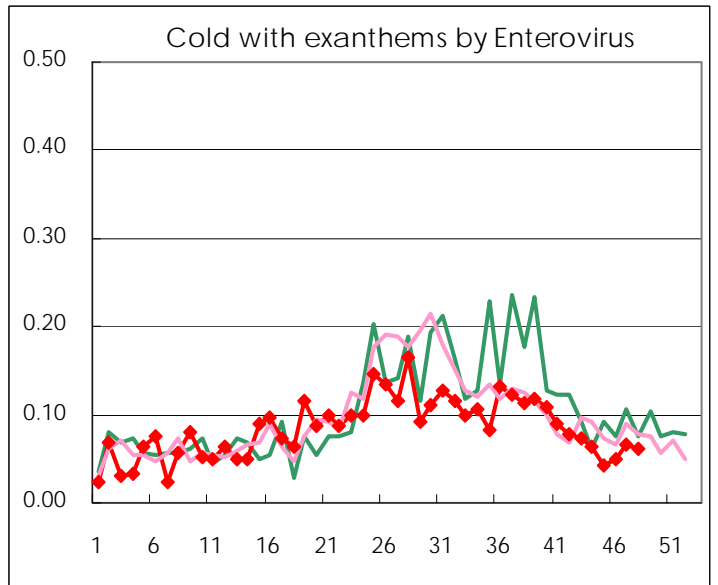
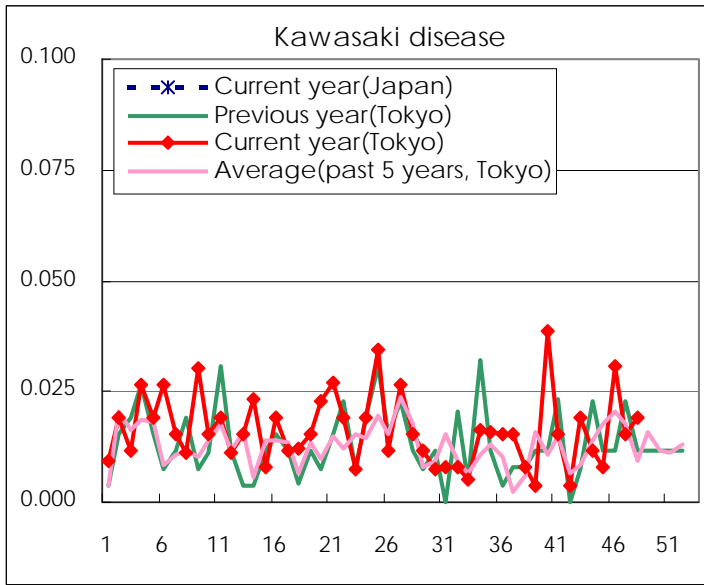
Diseases	Tokyo				
	45th	46th	47th	48th	/sentinel
Respiratory syncytial virus infection	236	245	213	245	0.94
Pharyngoconjunctival fever	74	128	130	172	0.66
Group A streptococcal pharyngitis	303	386	434	536	2.05
Infectious gastroenteritis	1,169	1,840	2,297	3,946	15.12
Chickenpox	171	235	252	351	1.34
Hand, foot, and mouth disease	125	95	64	65	0.25
Erythema infectiosum	27	34	24	44	0.17
Exanthem subitum	122	168	144	153	0.59
Pertussis	1		2	1	0.00
Herpangina	33	23	9	20	0.08
Mumps	40	44	40	40	0.15
Kawasaki disease	2	8	4	5	0.02
Cold with exanthems by Enterovirus	11	13	17	16	0.06
Influenza	54	52	124	173	0.42
Acute hemorrhagic conjunctivitis				1	0.03
Epidemic keratoconjunctivitis	15	10	11	12	0.32
Bacterial meningitis	1	1	2	2	0.08
Aseptic meningitis	1	3	2	1	0.04
Mycoplasma pneumonia	5	12	13	9	0.36
Chlamydial pneumonia (excluding psittacosis)		1			
Infectious gastroenteritis (only by Rotavirus)	1		1	3	0.12
Influenza-Associated Hospitalizations			4	1	0.04

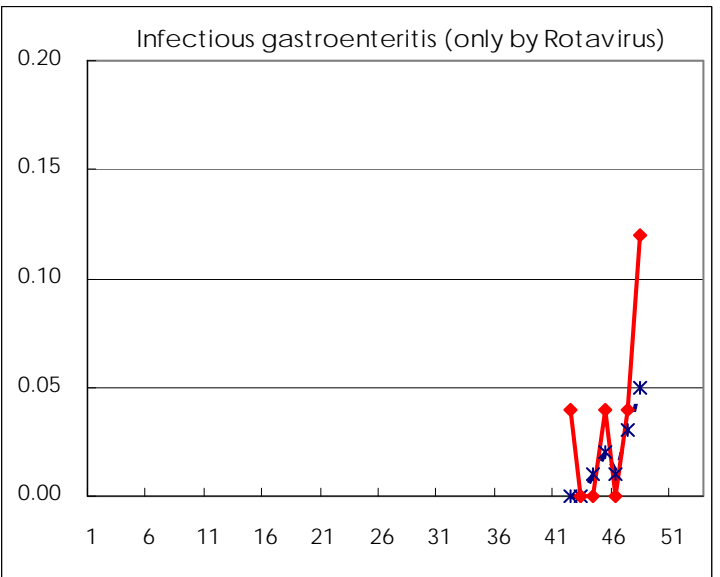
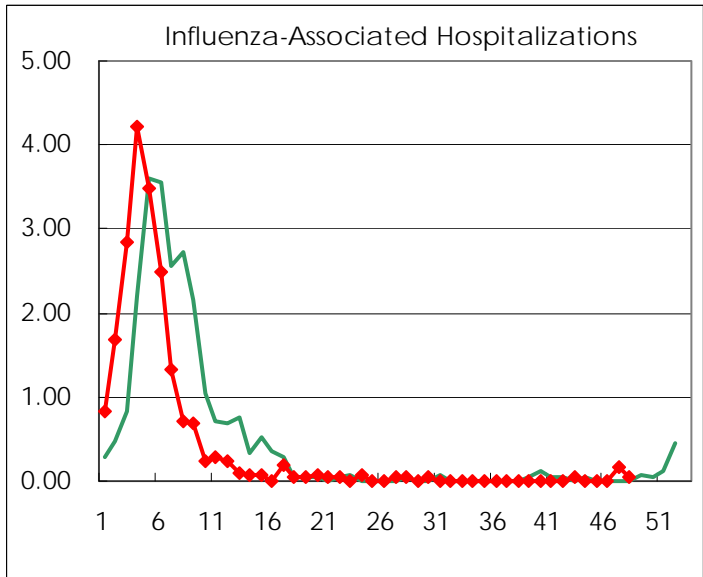
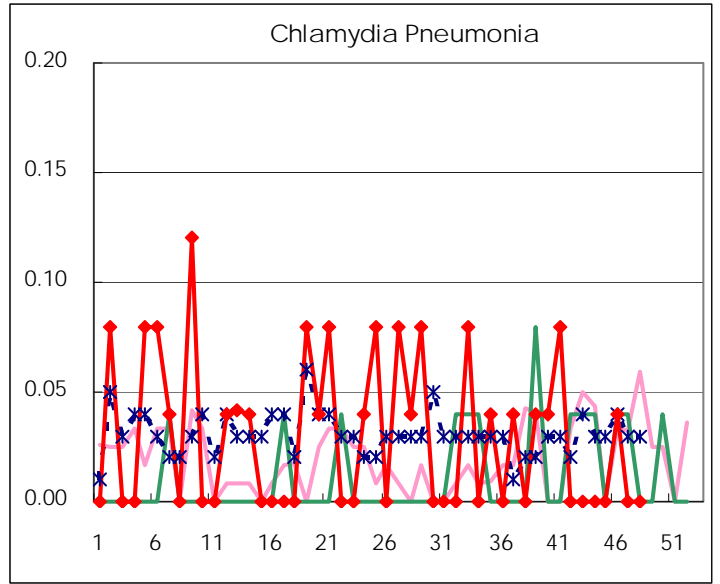
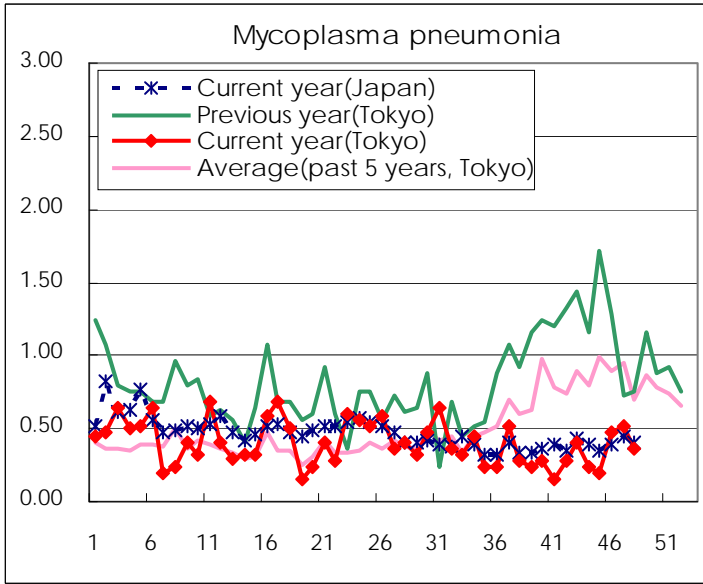
(Blank means 0.)

Disease Trend Graph (weekly reported cases per sentinel in comparison)









Number of sentinel facilities for weekly reporting		
Types of sentinels	Number of sentinels	Sentinels having reported
Pediatric	264	261
Influenza	419	415
Ophthalmic	39	38
Specially-designated	25	25

Tokyo Metropolitan Government
Infectious Disease Surveillance Center