
INFECTIOUS DISEASES WEEKLY REPORT

TOKYO IDWR

Tokyo Metropolitan Infectious Disease Surveillance Center

12 December 2013 / Number 49

Surveillance System in Tokyo, Japan

The infectious diseases which all physicians must report

All physicians must report to health centers the incidence of the diseases which are shown at page one. Health centers electronically report the individual cases to Tokyo Metropolitan Infectious Disease Surveillance Center.

The infectious diseases required to be reported by the sentinels

The numbers of patients who visit the sentinel clinics or hospitals during a week are reported to health centers in Tokyo. And they electronically report the numbers to Tokyo Metropolitan Infectious Disease Surveillance Center. We have about 500 sentinel clinics and hospitals in Tokyo.

1st Week is early January and 52nd Week is end of December.

Tokyo Metropolitan Institute of Public Health

TEL:81-3-3363-3213 FAX:81-3-5332-7365

e-mail:idsc@tokyo-eiken.go.jp

URL:idsc.tokyo-eiken.go.jp/

Number of patients with the diseases which all physicians must report

Category	Diseases	Tokyo				Japan		
		46th	47th	48th	49th	Cum 2013	49th	Cum 2013
I	Ebola hemorrhagic fever							
	Crimean-Congo hemorrhagic fever							
	Smallpox							
	South American hemorrhagic fever							
	Plague							
	Marburg disease							
	Lassa fever							
II	Acute poliomyelitis							1
	Tuberculosis	91	77	88	72	3,805	351	24,921
	Diphtheria							
	Severe Acute Respiratory Syndrome(SARS)							
	Avian influenza H5N1							
※	Avian influenza H7N9							
III	Cholera							4
	Shigellosis			1	2	33	2	136
	Enterohemorrhagic Escherichia coli infection	9	4	2	2	378	31	3,831
	Typhoid fever			1		21		64
	Paratyphoid fever		1			19		46
IV	Hepatitis E		1			30		111
	West Nile fever							
	Hepatitis A		1			19		119
	Echinococcosis							17
	Yellow fever							
	Psittacosis					2		8
	Omsk hemorrhagic fever							
	Relapsing fever							1
	Kyasanur forest disease							
	Q fever					3		5
	Rabies							
	Coccidioidomycosis			1		4		4
	Monkeypox							
	Severe Fever with Thrombocytopenia Syndrome						1	44
	Hemorrhagic fever with renal syndrome							
	Western equine encephalitis							
	Tick-borne encephalitis							
	Anthrax							
	Chikungunya fever			1		4		13
	Scrub typhus(Tsutsugamushi disease)	1	1	1	1	10	22	280
	Dengue fever			1		63	1	233
	Eastern equine encephalitis							
	Avian influenza (excluding H5N1 and H7N9)							
	Nipah virus infection							
	Japanese spotted fever						3	164
	Japanese encephalitis							8
	Hantavirus pulmonary syndrome							
	Herpes B virus infection							
	Glanders							
	Brucellosis							2
	Venezuelan equine encephalitis							
	Hendra virus infection							
Epidemic typhus								
Botulism								
Malaria			2		11		46	
Tularemia								
Lyme disease					7		19	
Lyssavirus infection(excluding rabies)								
Rift valley fever								
Melioidosis					1		4	
Legionellosis	1		2	1	77	13	1,065	
Leptospirosis					5		28	
Rocky mountain spotted fever								

Category	Diseases	Tokyo					Japan	
		46th	47th	48th	49th	Cum 2013	49th	Cum 2013
V	Amebiasis	3	3	2	6	176	10	979
	Viral hepatitis(excluding hepatitis A and E)	1		2	1	69	4	268
	Acute encephalitis(excluding JE and WNE)		1	1		44	6	332
	Cryptosporidiosis					7		18
	Creutzfeldt-Jakob disease	1		1		18	2	195
	Severe invasive streptococcal infections(TSLS)	1	1			33	2	193
	Acquired immunodeficiency syndrome (AIDS)	6	9	10	10	445	14	1,423
	Giardiasis					21		78
	Invasive <i>Haemophilus influenzae</i> disease		1		1	11	2	98
	Invasive meningococcal disease					10		18
	Invasive pneumococcal disease	1	1	5	7	97	34	857
	Meningococcal meningitis							2
	Congenital rubella syndrome		1			12	2	28
	Syphilis	11	3	13	10	404	16	1,148
	Tetanus					4	1	122
	Vancomycin-resistant <i>S. aureus</i> infection							
	Vancomycin-resistant <i>Enterococcus</i> infection					7	2	51
	Rubella	1	6	4	4	3,431	8	14,304
Measles		1	1		65	1	216	

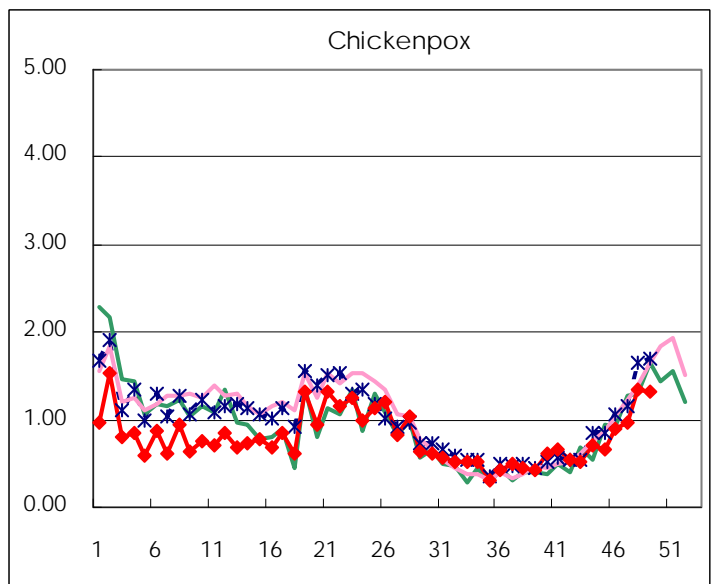
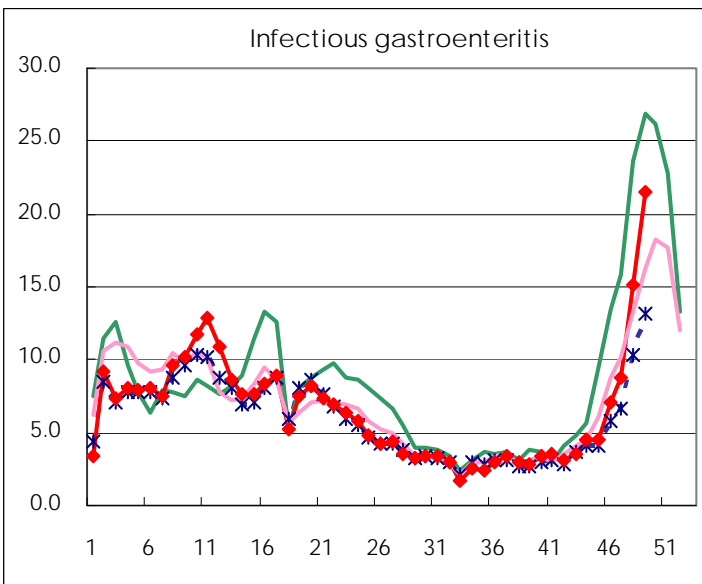
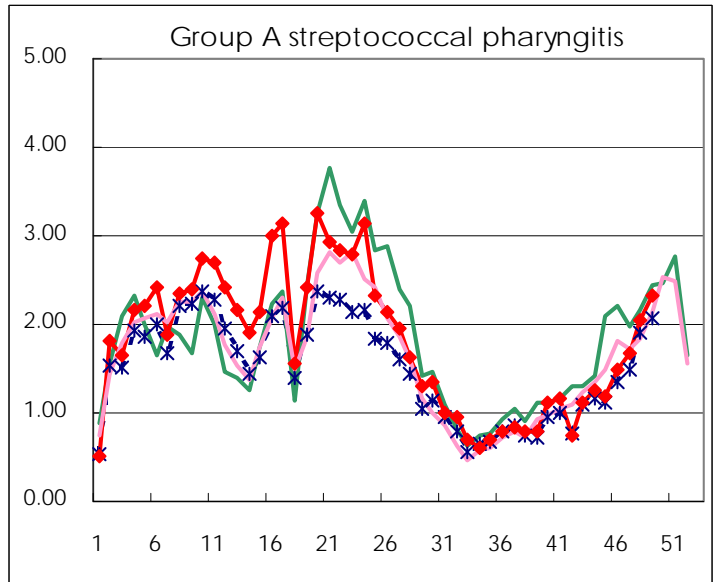
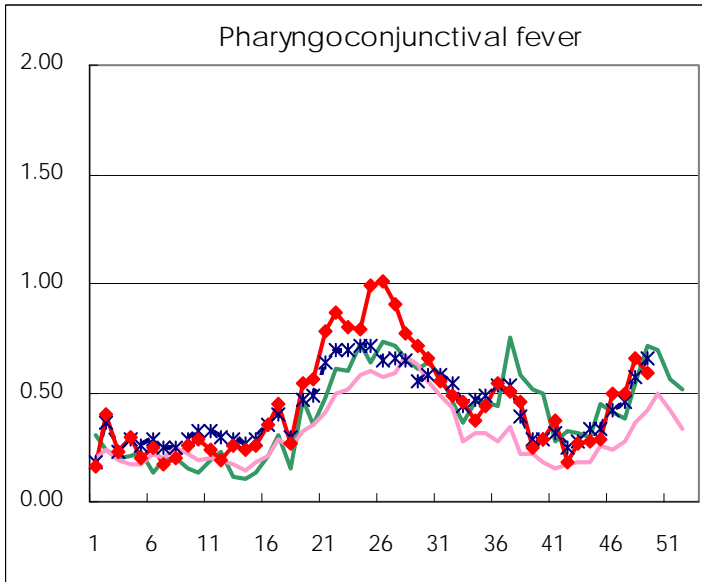
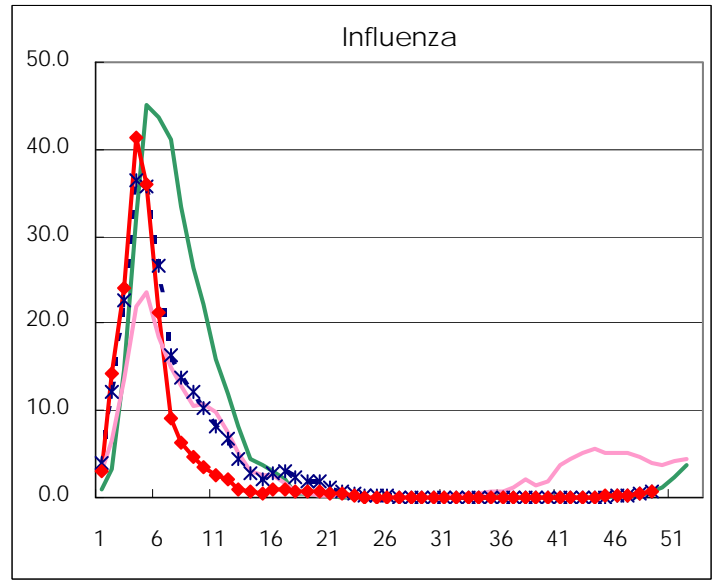
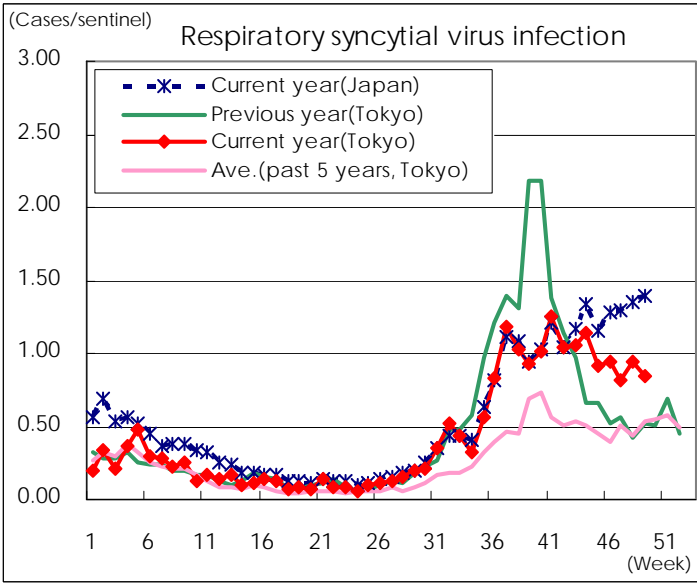
※ Designated infectious disease

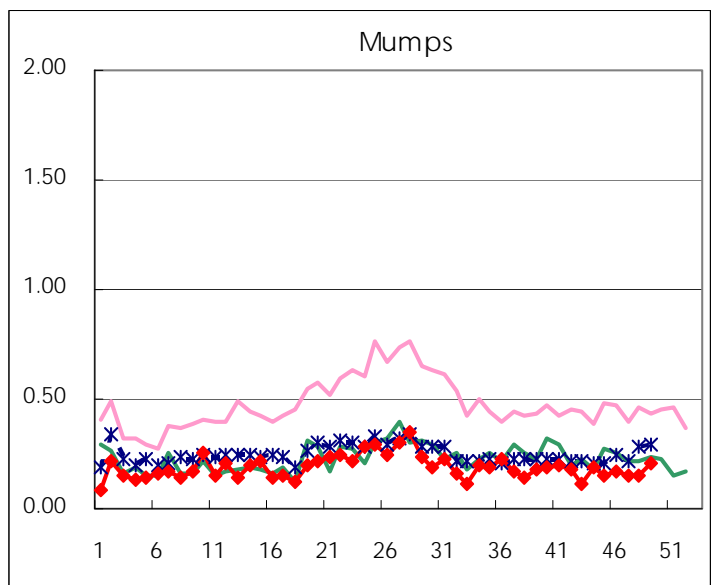
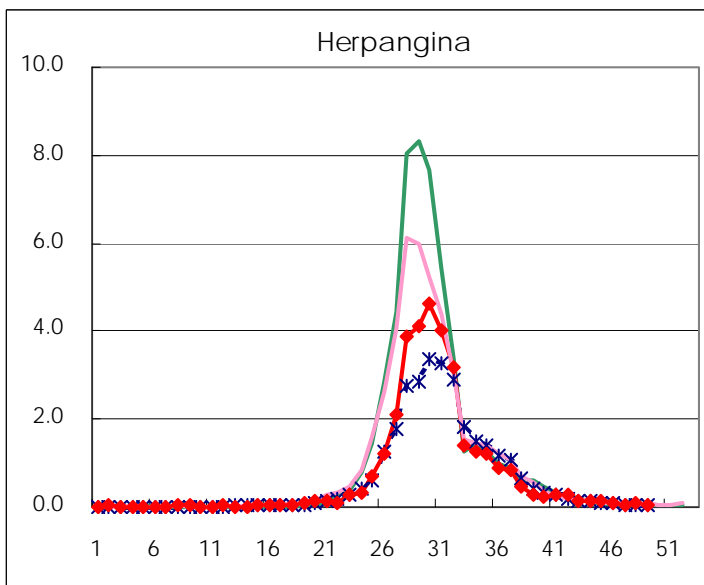
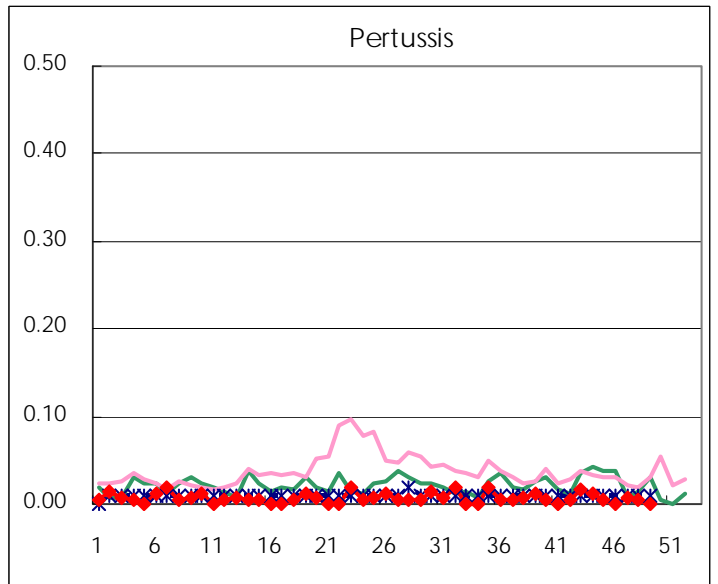
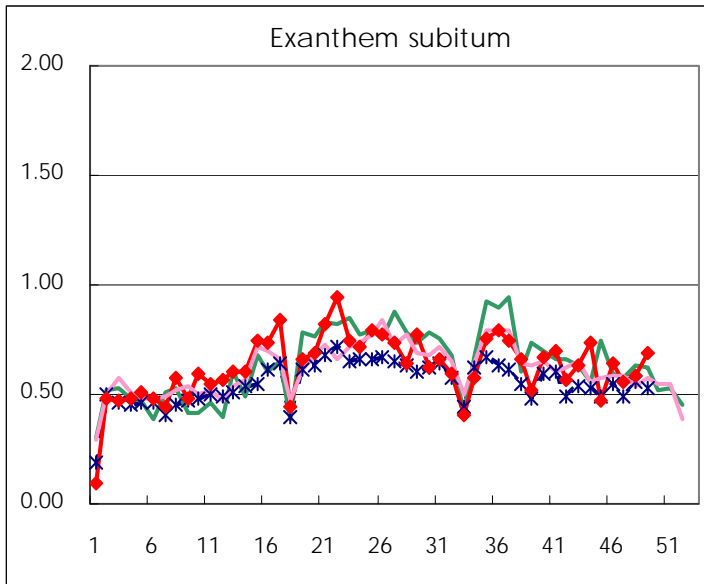
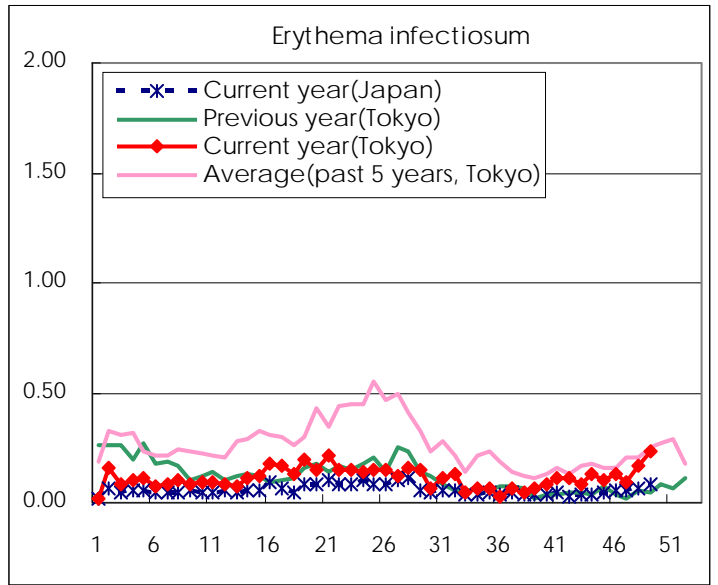
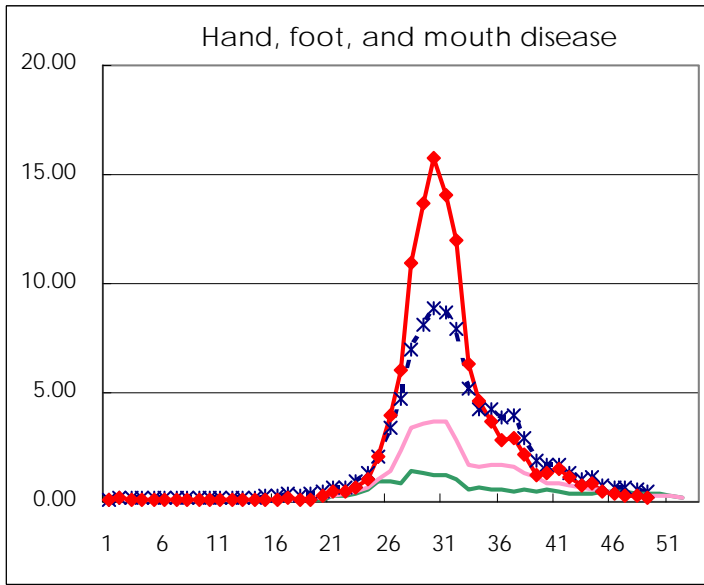
Number of patients with the diseases to be reported
by the designated clinics and hospitals

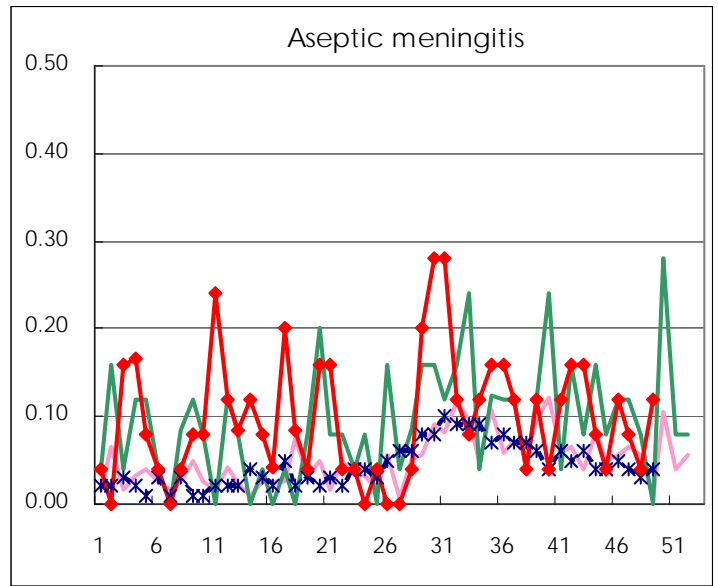
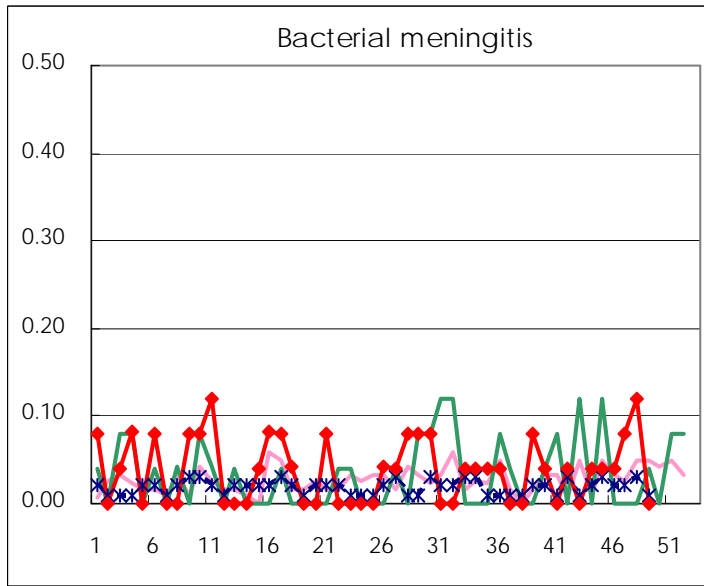
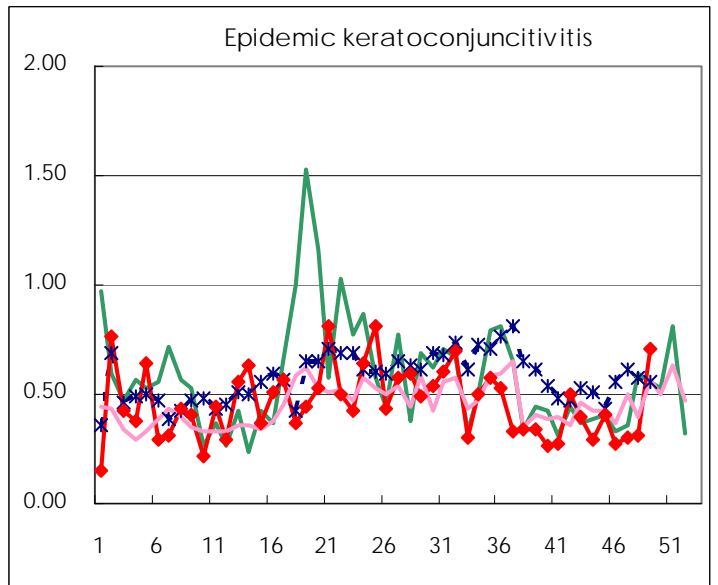
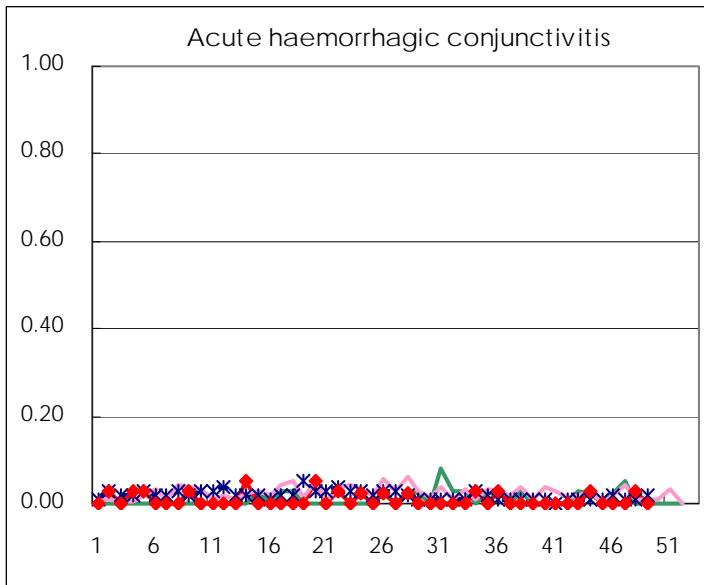
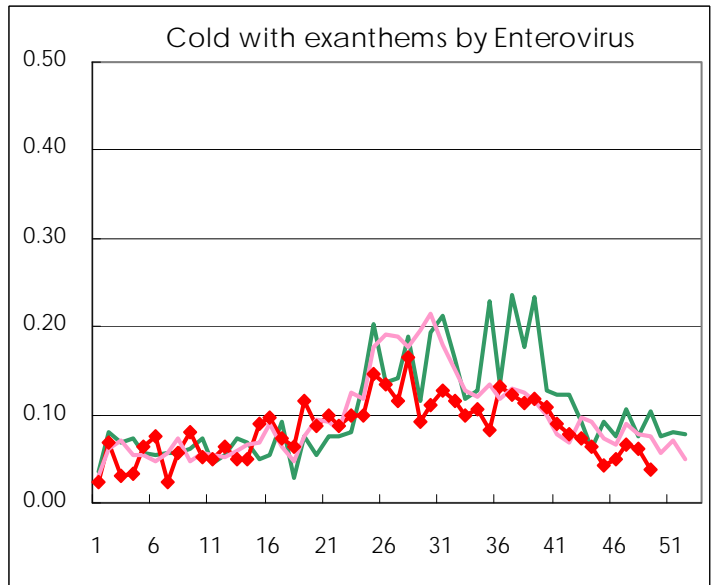
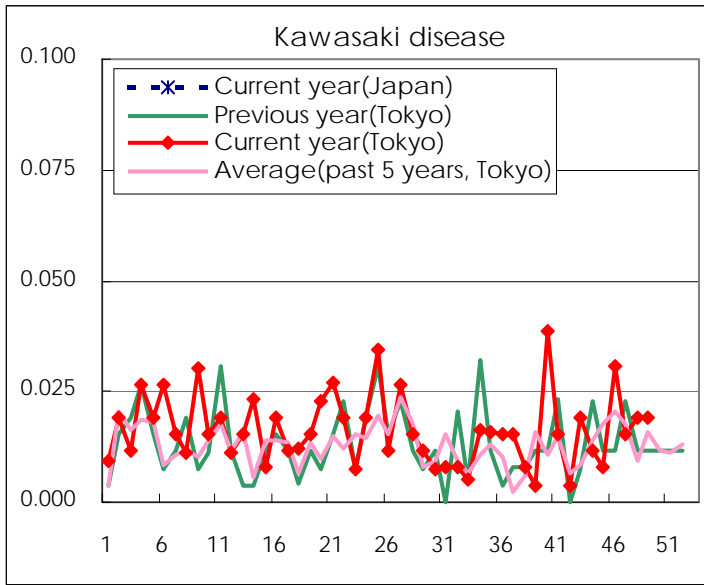
Diseases	Tokyo				
	46th	47th	48th	49th	/sentinel
Respiratory syncytial virus infection	245	213	245	218	0.84
Pharyngoconjunctival fever	128	130	172	154	0.59
Group A streptococcal pharyngitis	386	434	536	606	2.33
Infectious gastroenteritis	1,840	2,297	3,946	5,588	21.49
Chickenpox	235	252	351	346	1.33
Hand, foot, and mouth disease	95	64	65	61	0.23
Erythema infectiosum	34	24	44	61	0.23
Exanthem subitum	168	144	153	178	0.68
Pertussis		2	1		
Herpangina	23	9	20	13	0.05
Mumps	44	40	40	55	0.21
Kawasaki disease	8	4	5	5	0.02
Cold with exanthems by Enterovirus	13	17	16	10	0.04
Influenza	52	124	173	282	0.68
Acute hemorrhagic conjunctivitis			1		
Epidemic keratoconjunctivitis	10	11	12	27	0.71
Bacterial meningitis	1	2	3		
Aseptic meningitis	3	2	1	3	0.12
Mycoplasma pneumonia	12	13	9	7	0.28
Chlamydial pneumonia (excluding psittacosis)	1				
Infectious gastroenteritis (only by Rotavirus)		1	3	3	0.12
Influenza-Associated Hospitalizations		4	1	2	0.08

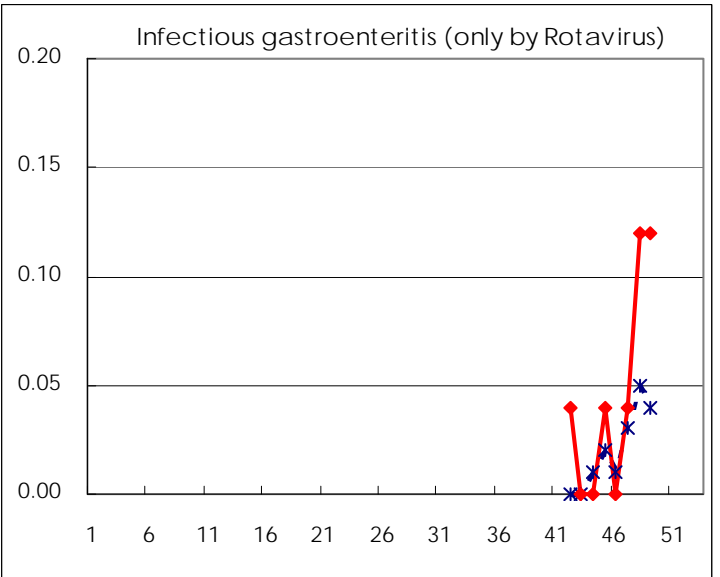
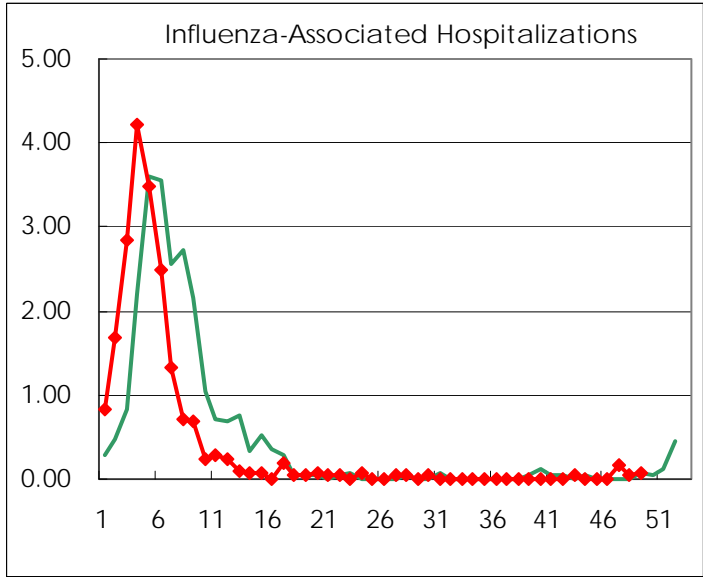
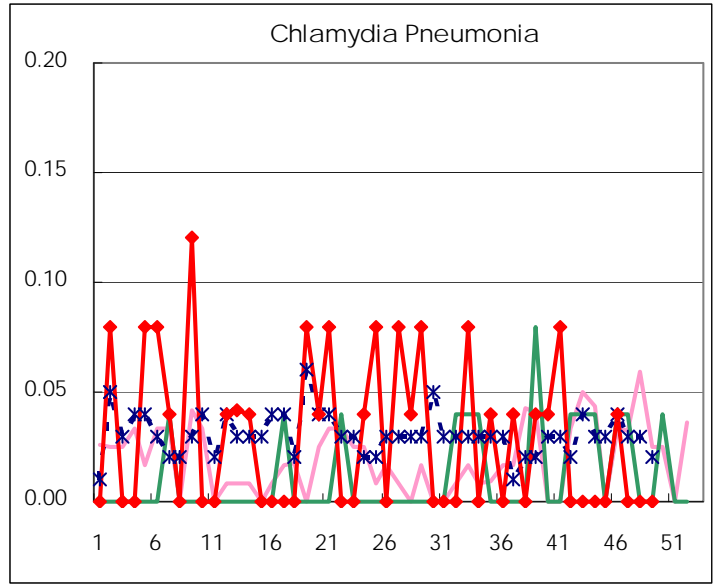
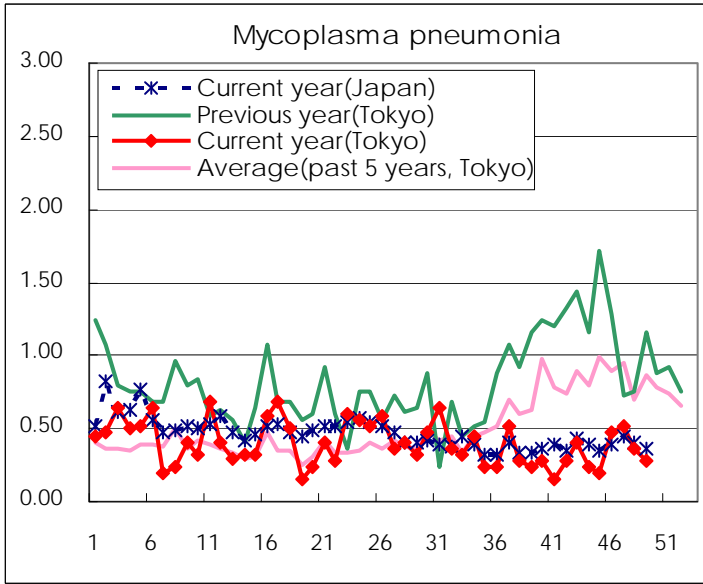
(Blank means 0.)

Disease Trend Graph (weekly reported cases per sentinel in comparison)









Number of sentinel facilities for weekly reporting		
Types of sentinels	Number of sentinels	Sentinels having reported
Pediatric	264	260
Influenza	419	413
Ophthalmic	39	38
Specially-designated	25	25

Tokyo Metropolitan Government
Infectious Disease Surveillance Center