
INFECTIOUS DISEASES WEEKLY REPORT

TOKYO IDWR

Tokyo Metropolitan Infectious Disease Surveillance Center

19 December 2013 / Number 50

Surveillance System in Tokyo, Japan

The infectious diseases which all physicians must report

All physicians must report to health centers the incidence of the diseases which are shown at page one. Health centers electronically report the individual cases to Tokyo Metropolitan Infectious Disease Surveillance Center.

The infectious diseases required to be reported by the sentinels

The numbers of patients who visit the sentinel clinics or hospitals during a week are reported to health centers in Tokyo. And they electronically report the numbers to Tokyo Metropolitan Infectious Disease Surveillance Center. We have about 500 sentinel clinics and hospitals in Tokyo.

1st Week is early January and 52nd Week is end of December.

Tokyo Metropolitan Institute of Public Health

TEL:81-3-3363-3213 FAX:81-3-5332-7365

e-mail:idsc@tokyo-eiken.go.jp

URL:idsc.tokyo-eiken.go.jp/

Number of patients with the diseases which all physicians must report

Category	Diseases	Tokyo				Japan		
		47th	48th	49th	50th	Cum 2013	50th	Cum 2013
I	Ebola hemorrhagic fever							
	Crimean-Congo hemorrhagic fever							
	Smallpox							
	South American hemorrhagic fever							
	Plague							
	Marburg disease							
	Lassa fever							
II	Acute poliomyelitis							1
	Tuberculosis	77	89	82	80	3,906	331	25,418
	Diphtheria							
	Severe Acute Respiratory Syndrome(SARS)							
	Avian influenza H5N1							
※	Avian influenza H7N9							
III	Cholera							4
	Shigellosis		1	2	1	34	4	140
	Enterohemorrhagic Escherichia coli infection	4	2	2	2	380	134	3,974
	Typhoid fever		1	1		22		65
	Paratyphoid fever	1		1		20	1	48
IV	Hepatitis E	1				30	1	113
	West Nile fever							
	Hepatitis A	1				19	4	123
	Echinococcosis							17
	Yellow fever							
	Psittacosis					2		8
	Omsk hemorrhagic fever							
	Relapsing fever							1
	Kyasanur forest disease							
	Q fever					3		5
	Rabies							
	Coccidioidomycosis		1			4		4
	Monkeypox							
	Severe Fever with Thrombocytopenia Syndrome						3	48
	Hemorrhagic fever with renal syndrome							
	Western equine encephalitis							
	Tick-borne encephalitis							
	Anthrax							
	Chikungunya fever		1			4		13
	Scrub typhus(Tsutsugamushi disease)	1	1	1	2	12	22	309
	Dengue fever		1		2	65	3	238
	Eastern equine encephalitis							
	Avian influenza (excluding H5N1 and H7N9)							
	Nipah virus infection							
	Japanese spotted fever							173
	Japanese encephalitis							8
	Hantavirus pulmonary syndrome							
	Herpes B virus infection							
	Glanders							
	Brucellosis							2
	Venezuelan equine encephalitis							
	Hendra virus infection							
Epidemic typhus								
Botulism								
Malaria		2			11	1	47	
Tularemia								
Lyme disease					7		19	
Lyssavirus infection(excluding rabies)								
Rift valley fever								
Melioidosis					1		4	
Legionellosis		2	1	1	78	14	1,084	
Leptospirosis					5		28	
Rocky mountain spotted fever								

Category	Diseases	Tokyo					Japan	
		47th	48th	49th	50th	Cum 2013	50th	Cum 2013
V	Amebiasis	3	2	6	3	179	13	1,001
	Viral hepatitis(excluding hepatitis A and E)		2	1	1	70	2	276
	Acute encephalitis(excluding JE and WNE)	1	1		2	46	3	344
	Cryptosporidiosis					7	1	19
	Creutzfeldt-Jakob disease		1		1	19	5	201
	Severe invasive streptococcal infections(TSLS)	1			2	35	2	195
	Acquired immunodeficiency syndrome (AIDS)	9	10	10	8	453	23	1,463
	Giardiasis					21		79
	Invasive <i>Haemophilus influenzae</i> disease	1		1		11	1	99
	Invasive meningococcal disease				1	11	2	20
	Invasive pneumococcal disease	1	5	7	9	106	19	893
	Meningococcal meningitis							2
	Congenital rubella syndrome	1			1	13		29
	Syphilis	3	13	11	2	407	14	1,171
	Tetanus					4		123
	Vancomycin-resistant <i>S. aureus</i> infection							
	Vancomycin-resistant Enterococcus infection					7	1	52
	Rubella	6	4	4	5	3,436	15	14,323
Measles	1	2			66	2	219	

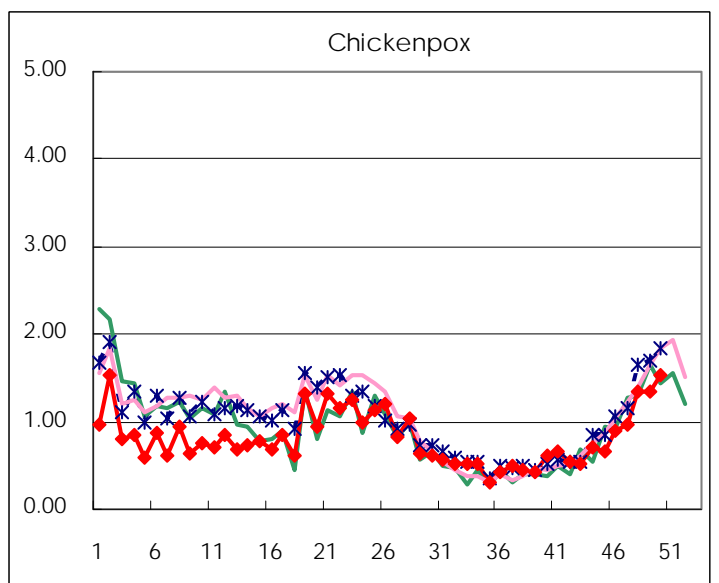
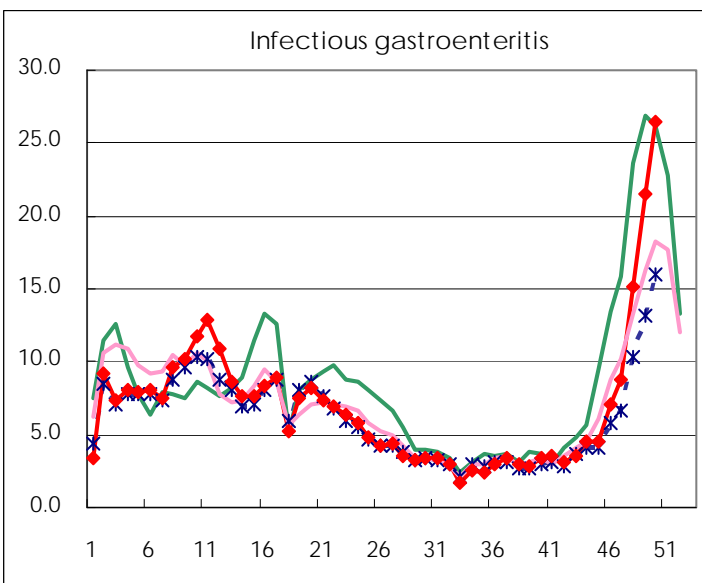
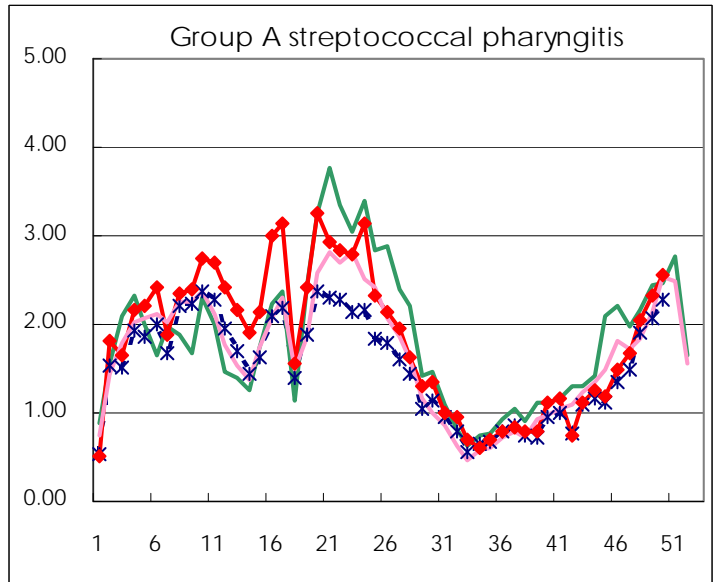
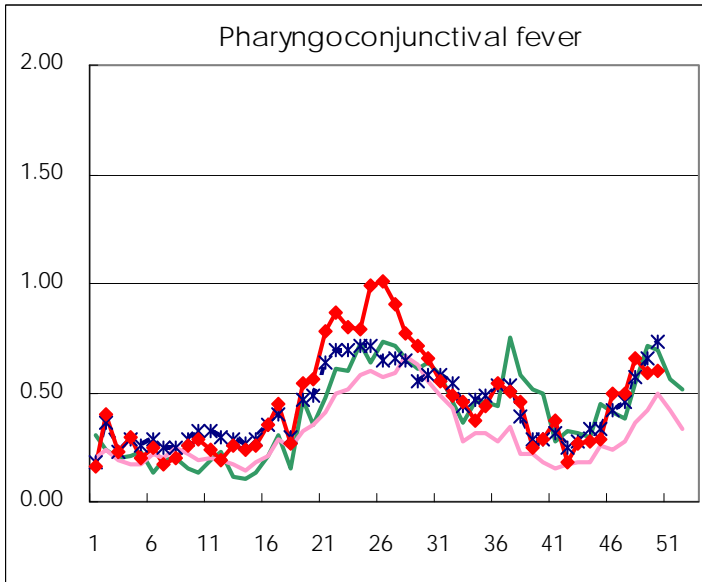
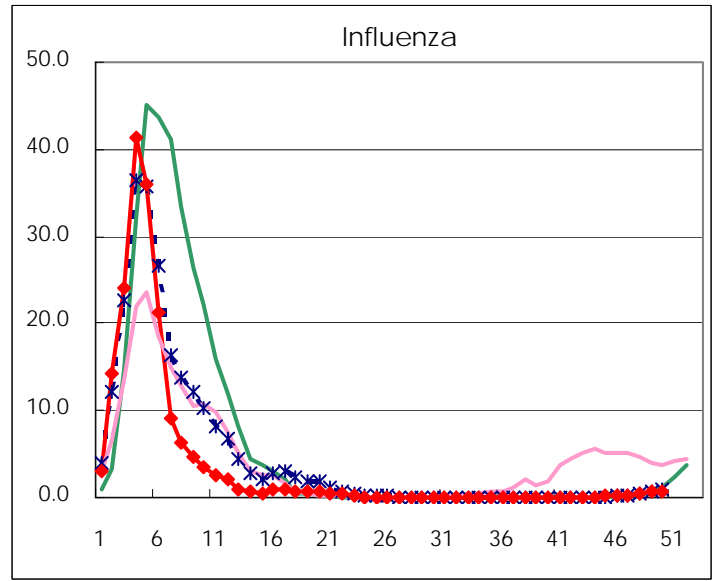
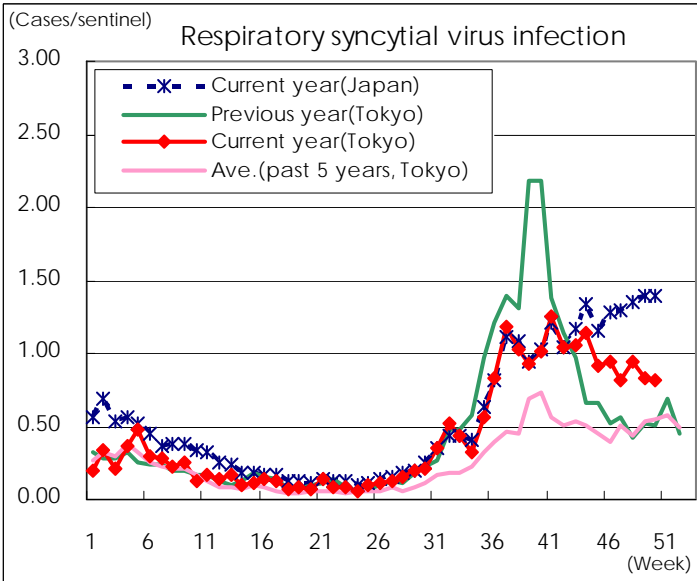
※ Designated infectious disease

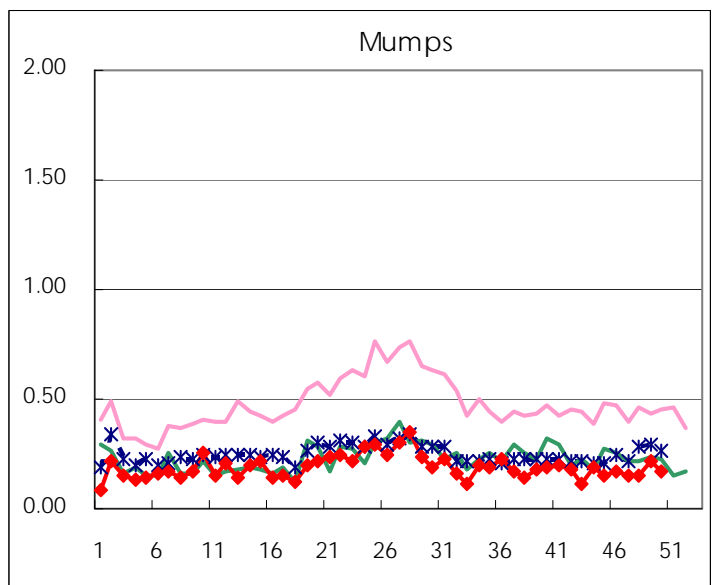
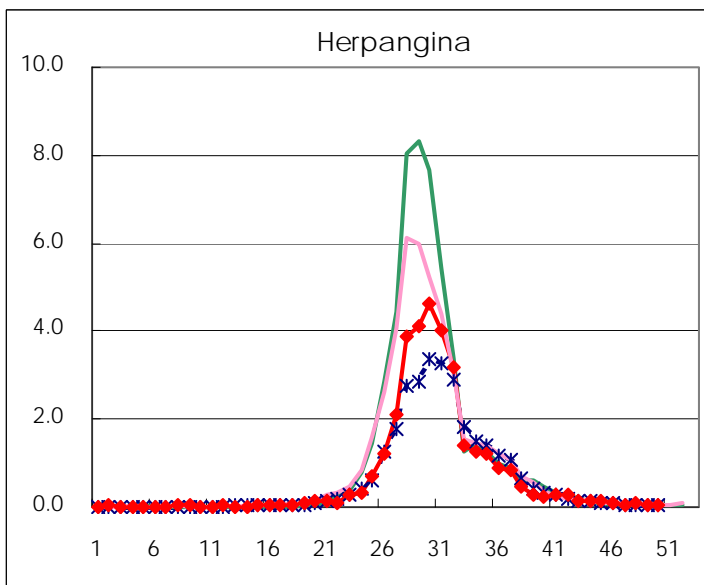
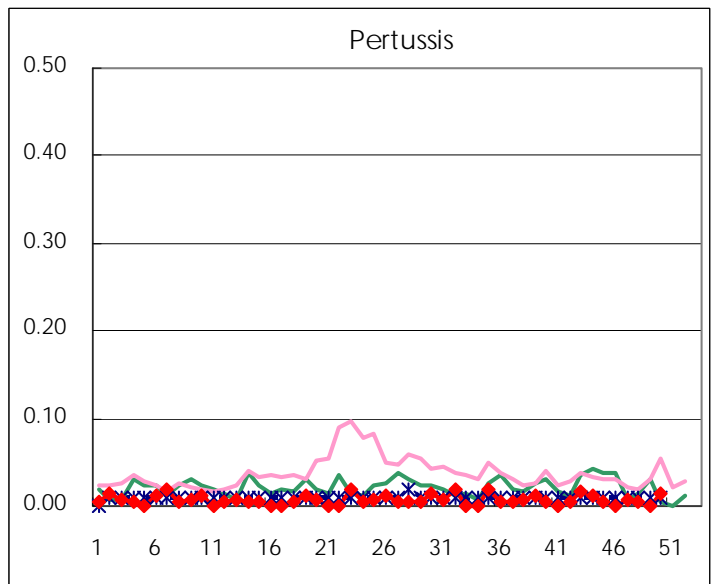
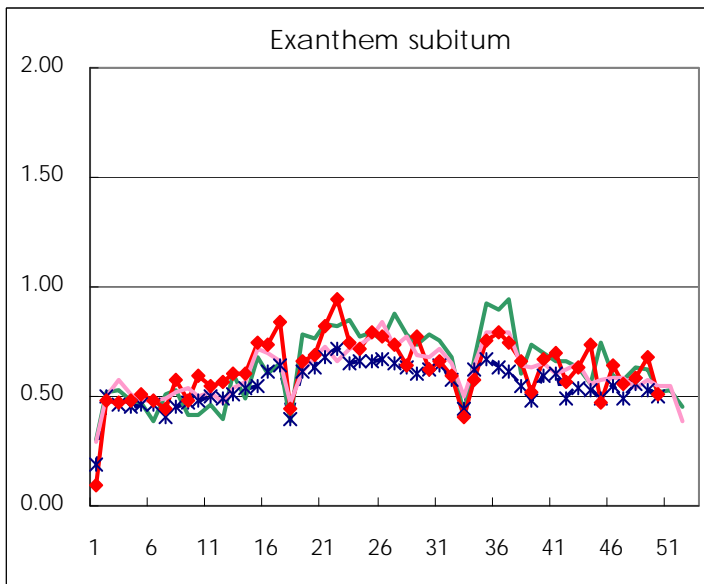
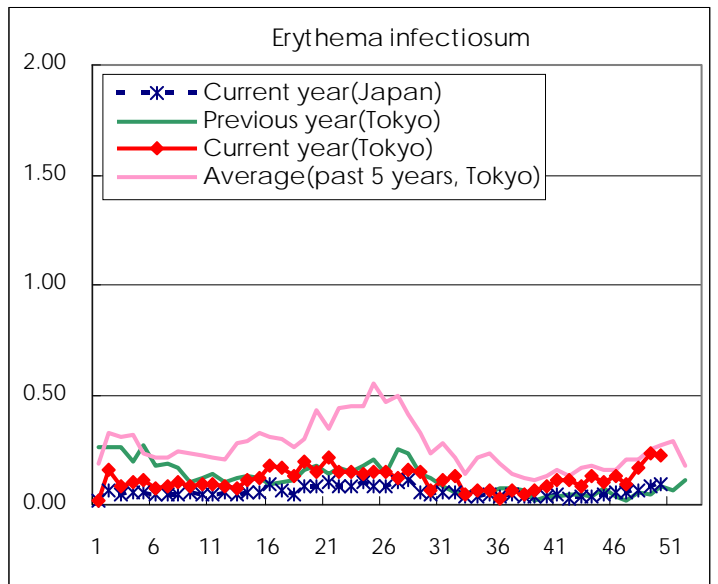
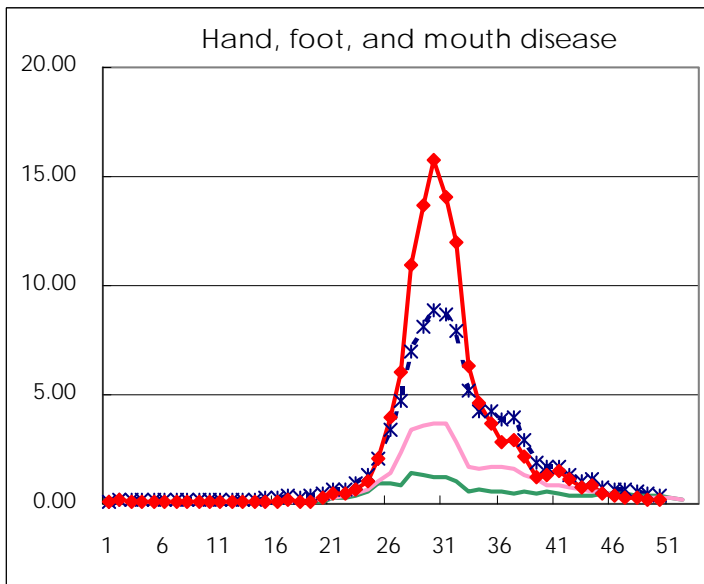
Number of patients with the diseases to be reported
by the designated clinics and hospitals

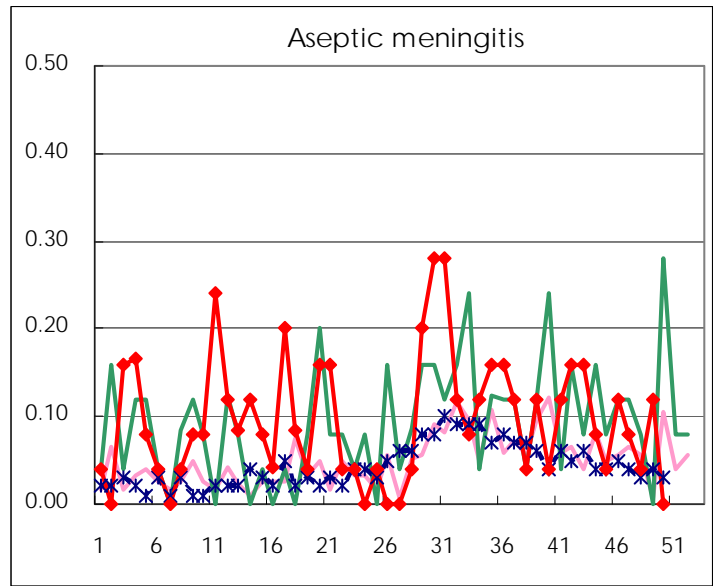
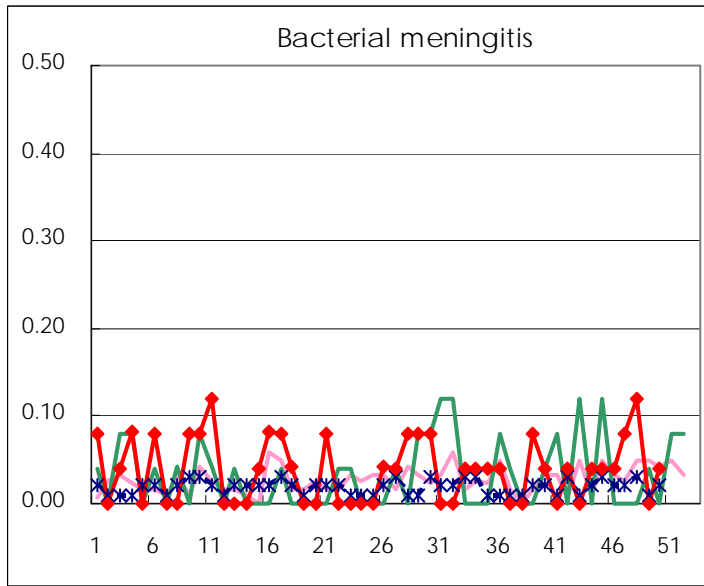
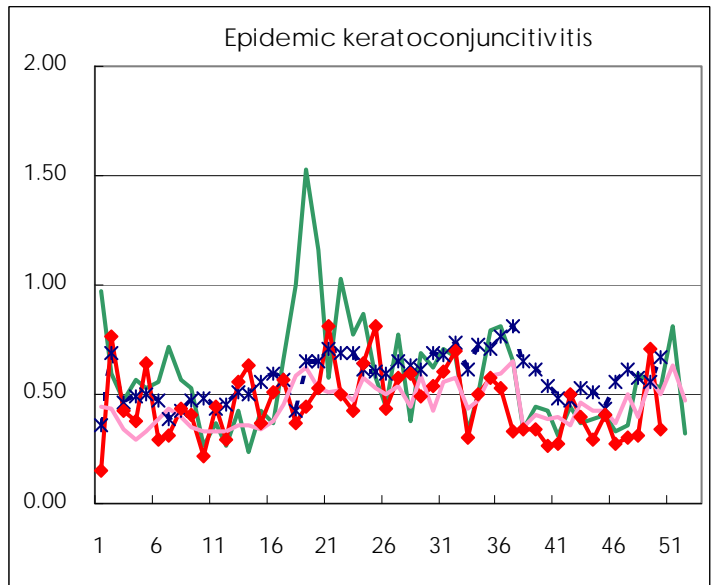
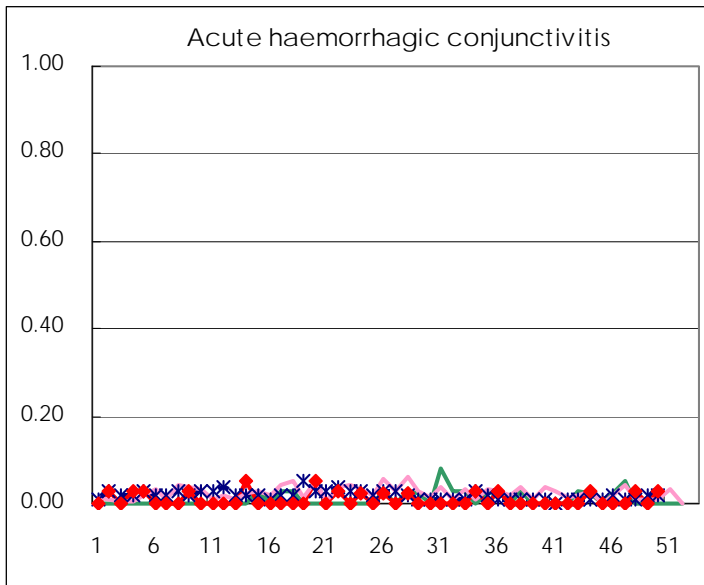
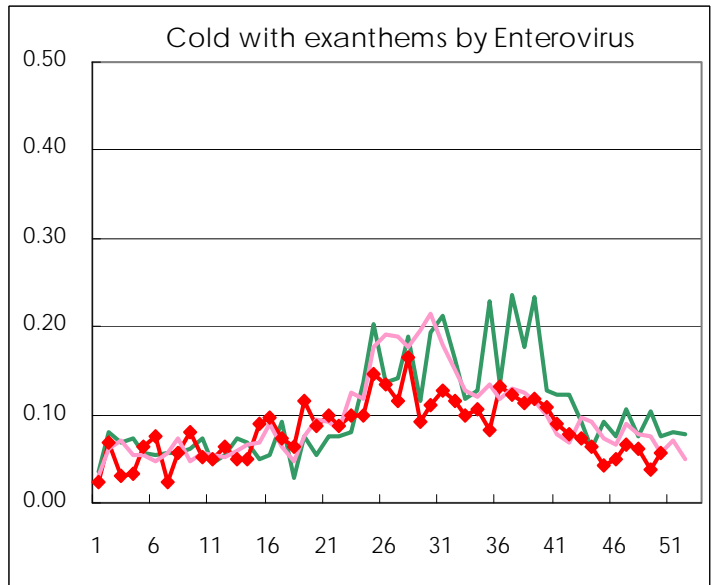
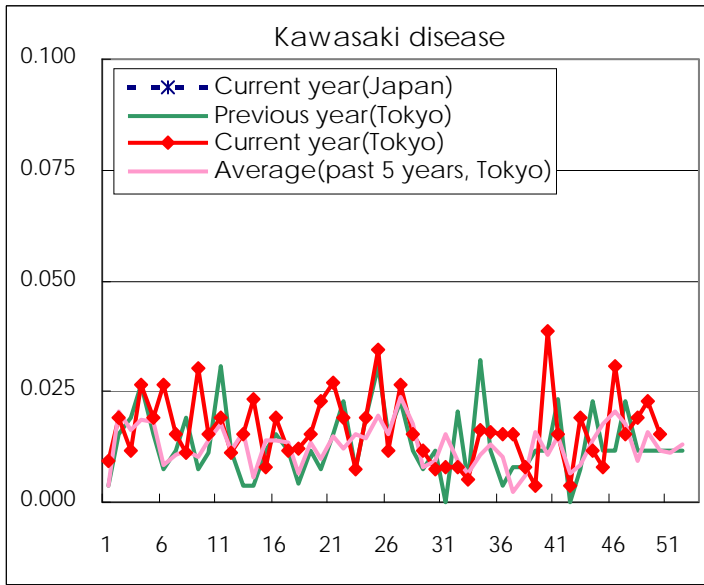
Diseases	Tokyo				
	47th	48th	49th	50th	/sentinel
Respiratory syncytial virus infection	213	245	218	214	0.82
Pharyngoconjunctival fever	130	172	154	157	0.60
Group A streptococcal pharyngitis	434	536	606	671	2.56
Infectious gastroenteritis	2,297	3,946	5,598	6,939	26.48
Chickenpox	252	351	348	400	1.53
Hand, foot, and mouth disease	64	65	61	56	0.21
Erythema infectiosum	24	44	62	59	0.23
Exanthem subitum	144	153	178	134	0.51
Pertussis	2	1		4	0.02
Herpangina	9	20	13	9	0.03
Mumps	40	40	56	44	0.17
Kawasaki disease	4	5	6	4	0.02
Cold with exanthems by Enterovirus	17	16	10	15	0.06
Influenza	124	173	282	303	0.73
Acute hemorrhagic conjunctivitis		1		1	0.03
Epidemic keratoconjunctivitis	11	12	27	13	0.34
Bacterial meningitis	2	3		1	0.04
Aseptic meningitis	2	1	3		
Mycoplasma pneumonia	13	9	7	10	0.40
Chlamydial pneumonia (excluding psittacosis)					
Infectious gastroenteritis (only by Rotavirus)	1	3	3	5	0.20
Influenza-Associated Hospitalizations	4	1	2	6	0.24

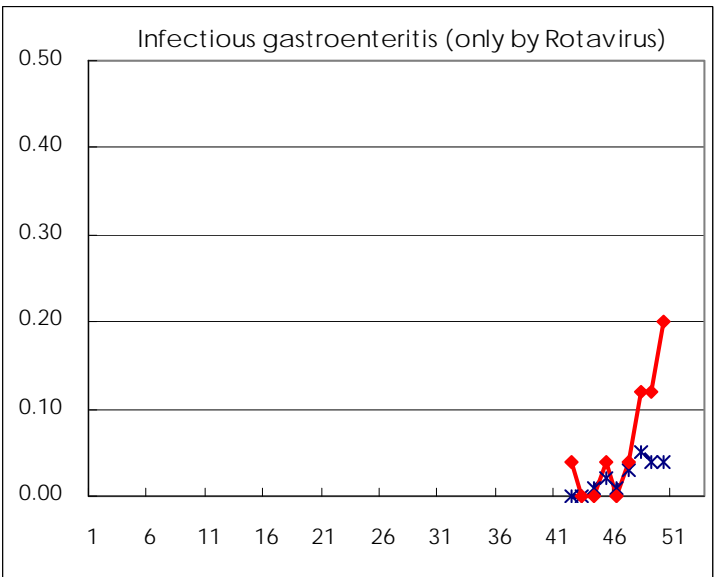
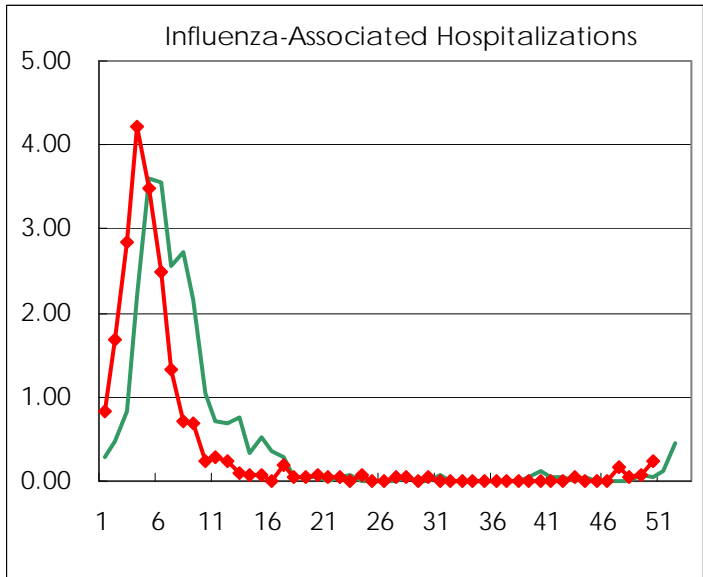
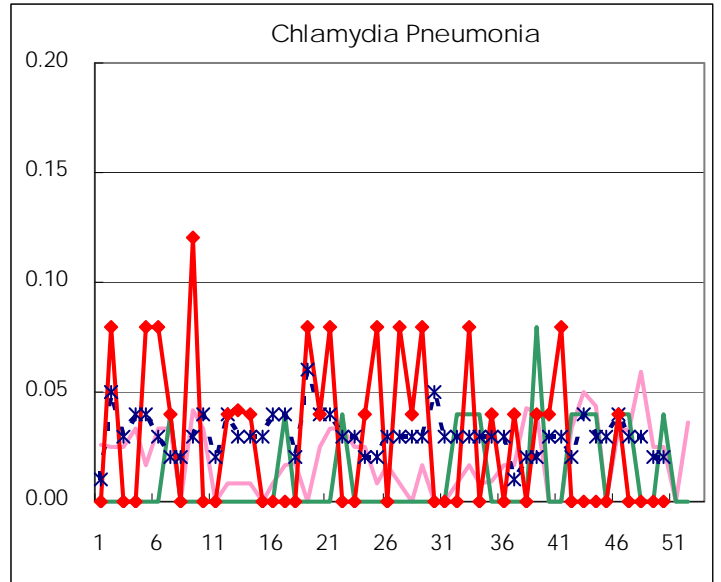
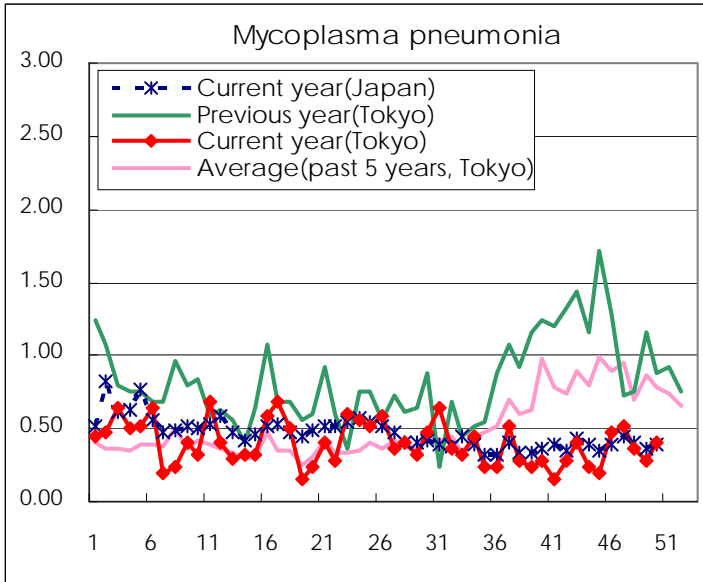
(Blank means 0.)

Disease Trend Graph (weekly reported cases per sentinel in comparison)









Number of sentinel facilities for weekly reporting		
Types of sentinels	Number of sentinels	Sentinels having reported
Pediatric	264	262
Influenza	419	414
Ophthalmic	39	38
Specially-designated	25	25

Tokyo Metropolitan Government
Infectious Disease Surveillance Center