
INFECTIOUS DISEASES WEEKLY REPORT

TOKYO IDWR

Tokyo Metropolitan Infectious Disease Surveillance Center

26 December 2013 / Number 51

Surveillance System in Tokyo, Japan

The infectious diseases which all physicians must report

All physicians must report to health centers the incidence of the diseases which are shown at page one. Health centers electronically report the individual cases to Tokyo Metropolitan Infectious Disease Surveillance Center.

The infectious diseases required to be reported by the sentinels

The numbers of patients who visit the sentinel clinics or hospitals during a week are reported to health centers in Tokyo. And they electronically report the numbers to Tokyo Metropolitan Infectious Disease Surveillance Center. We have about 500 sentinel clinics and hospitals in Tokyo.

1st Week is early January and 52nd Week is end of December.

Tokyo Metropolitan Institute of Public Health

TEL:81-3-3363-3213 FAX:81-3-5332-7365

e-mail:idsc@tokyo-eiken.go.jp

URL:idsc.tokyo-eiken.go.jp/

Number of patients with the diseases which all physicians must report

Category	Diseases	Tokyo				Japan		
		48th	49th	50th	51st	Cum 2013	51st	Cum 2013
I	Ebola hemorrhagic fever							
	Crimean-Congo hemorrhagic fever							
	Smallpox							
	South American hemorrhagic fever							
	Plague							
	Marburg disease							
	Lassa fever							
II	Acute poliomyelitis							1
	Tuberculosis	88	92	82	65	3,984	354	25,932
	Diphtheria							
	Severe Acute Respiratory Syndrome(SARS)							
	Avian influenza H5N1							
※	Avian influenza H7N9							
III	Cholera							4
	Shigellosis	1	2	1		34	1	141
	Enterohemorrhagic Escherichia coli infection	2	2	2	2	382	21	4,000
	Typhoid fever	1	1		1	23	1	66
	Paratyphoid fever		1			20	1	49
IV	Hepatitis E				2	32	4	118
	West Nile fever							
	Hepatitis A					19	1	124
	Echinococcosis							17
	Yellow fever							
	Psittacosis					2		8
	Omsk hemorrhagic fever							
	Relapsing fever							1
	Kyasanur forest disease							
	Q fever					3	1	6
	Rabies							
	Coccidioidomycosis	1				4		4
	Monkeypox							
	Severe Fever with Thrombocytopenia Syndrome							48
	Hemorrhagic fever with renal syndrome							
	Western equine encephalitis							
	Tick-borne encephalitis							
	Anthrax							
	Chikungunya fever	1				4		13
	Scrub typhus(Tsutsugamushi disease)	1	1	2		12	17	330
	Dengue fever	1		2		65	2	244
	Eastern equine encephalitis							
	Avian influenza (excluding H5N1 and H7N9)							
	Nipah virus infection							
	Japanese spotted fever						1	174
	Japanese encephalitis							9
	Hantavirus pulmonary syndrome							
	Herpes B virus infection							
	Glanders							
	Brucellosis							2
	Venezuelan equine encephalitis							
	Hendra virus infection							
Epidemic typhus								
Botulism								
Malaria	2			1	12	1	48	
Tularemia								
Lyme disease					7		19	
Lyssavirus infection(excluding rabies)								
Rift valley fever								
Melioidosis					1		4	
Legionellosis	2	1	1	2	80	8	1,095	
Leptospirosis				1	6	1	29	
Rocky mountain spotted fever								

Category	Diseases	Tokyo					Japan	
		48th	49th	50th	51st	Cum 2013	51st	Cum 2013
V	Amebiasis	2	6	3	3	182	13	1,019
	Viral hepatitis(excluding hepatitis A and E)	2	1	1	1	71	3	281
	Acute encephalitis(excluding JE and WNE)	1		2	1	47	3	353
	Cryptosporidiosis					7		19
	Creutzfeldt-Jakob disease	1		1		19		201
	Severe invasive streptococcal infections(TSLS)			2	1	36		196
	Acquired immunodeficiency syndrome (AIDS)	10	10	8	4	457	19	1,496
	Giardiasis				1	22	1	80
	Invasive <i>Haemophilus influenzae</i> disease		1			11	3	103
	Invasive meningococcal disease			1		11	1	21
	Invasive pneumococcal disease	5	7	9	11	117	20	930
	Meningococcal meningitis	/	/	/	/			2
	Congenital rubella syndrome			1		13		29
	Syphilis	13	11	2	6	413	11	1,195
	Tetanus					4		123
	Vancomycin-resistant <i>S. aureus</i> infection							
	Vancomycin-resistant <i>Enterococcus</i> infection					7		52
	Rubella	4	4	5	4	3,440	15	14,340
Measles	2		1	1	68	4	225	

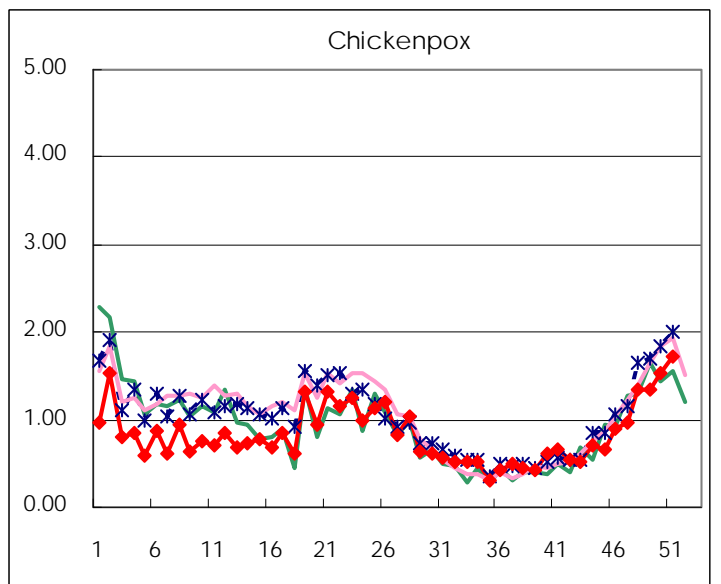
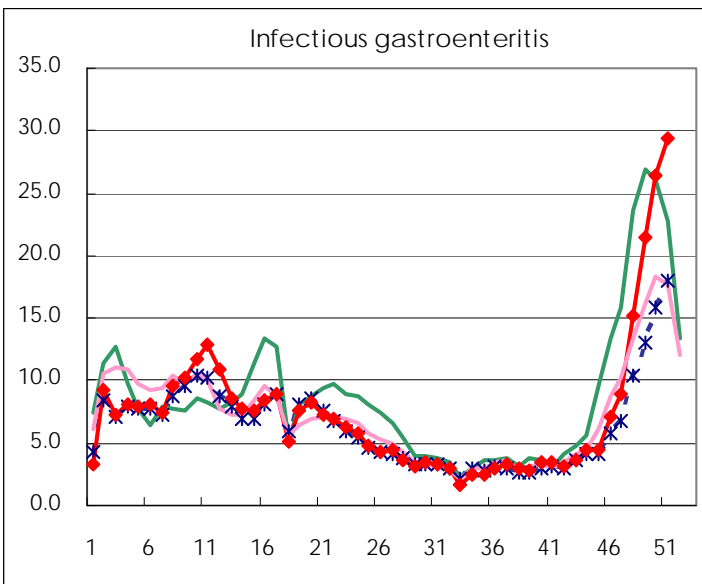
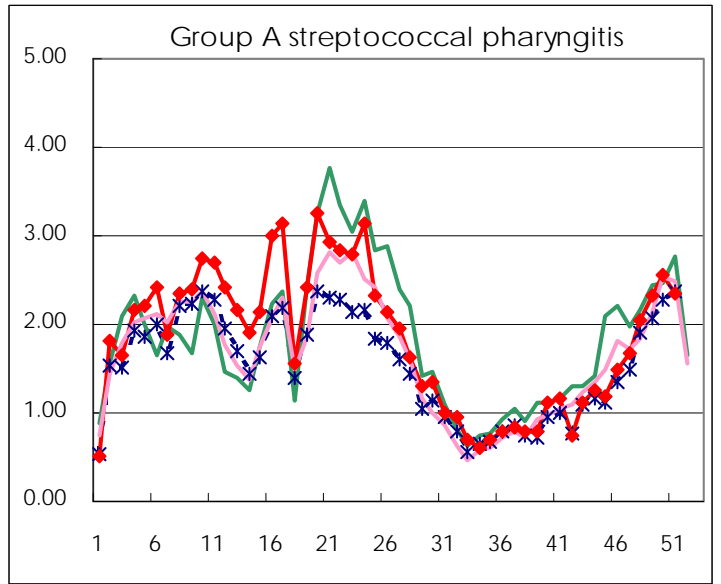
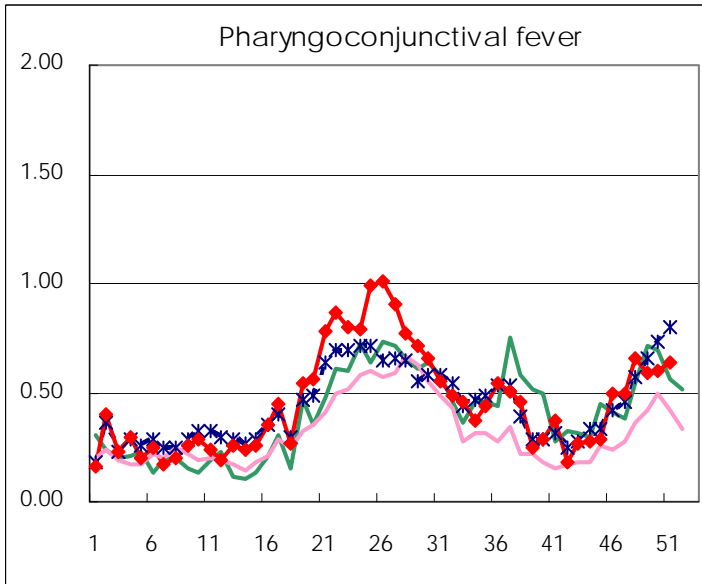
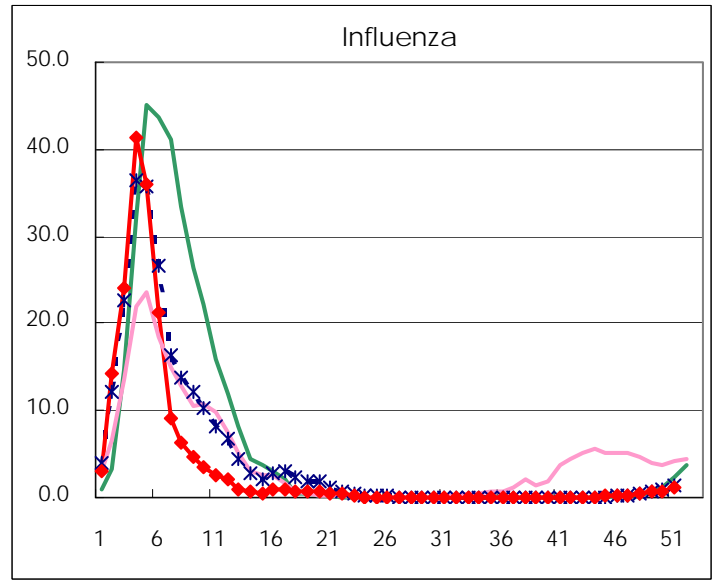
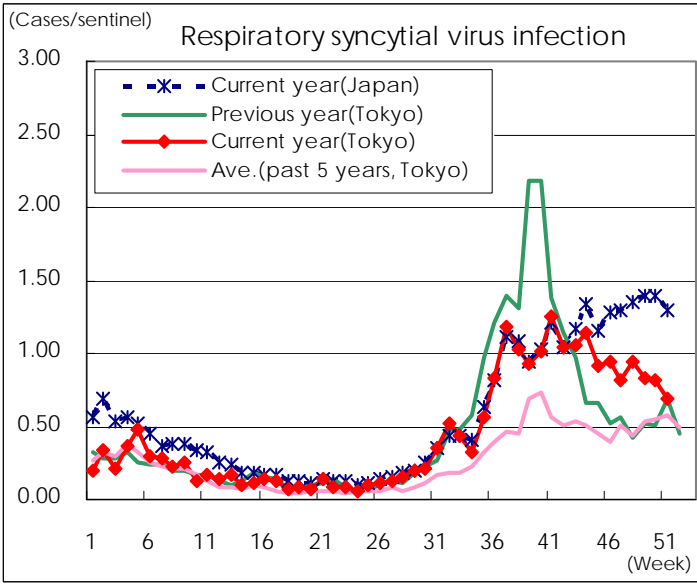
※ Designated infectious disease

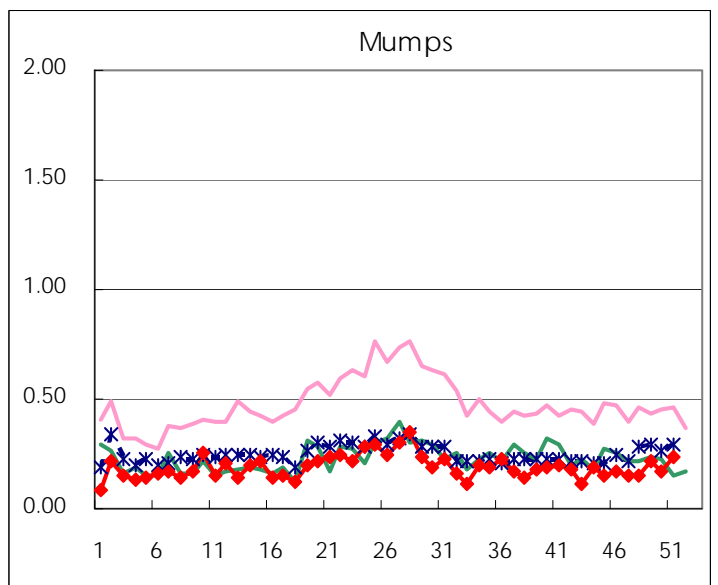
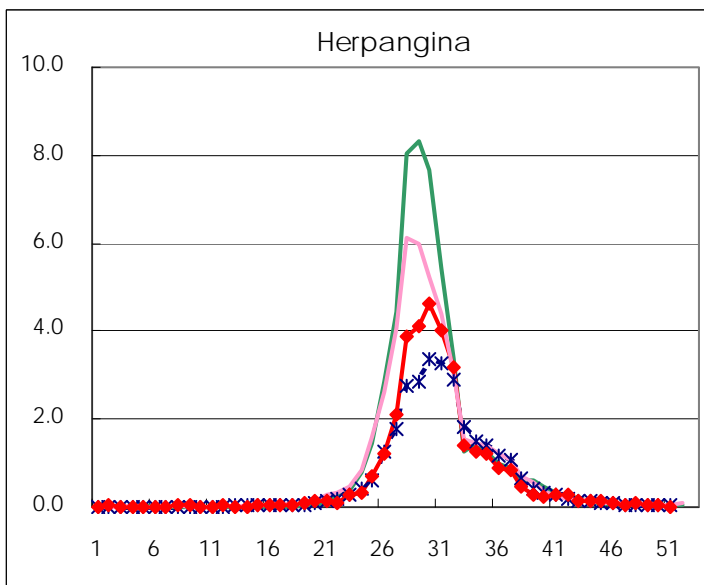
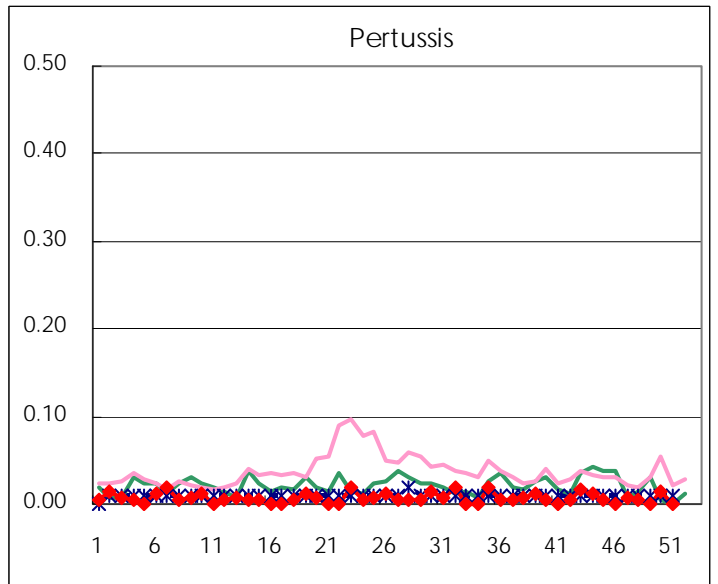
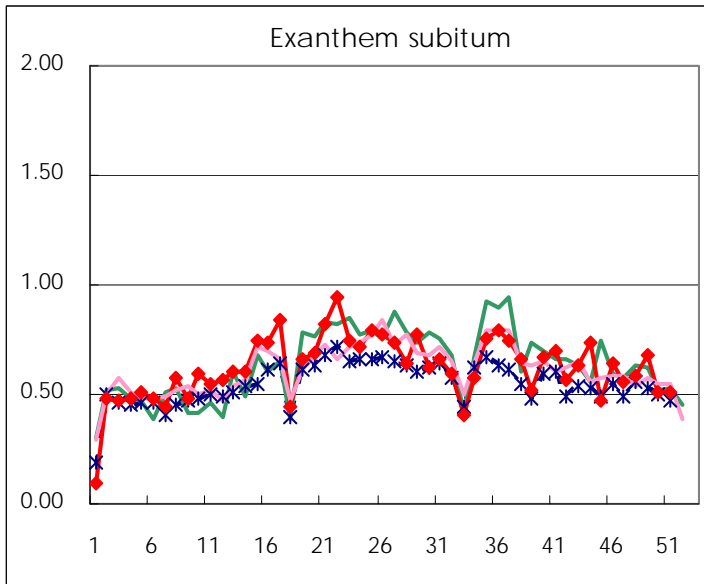
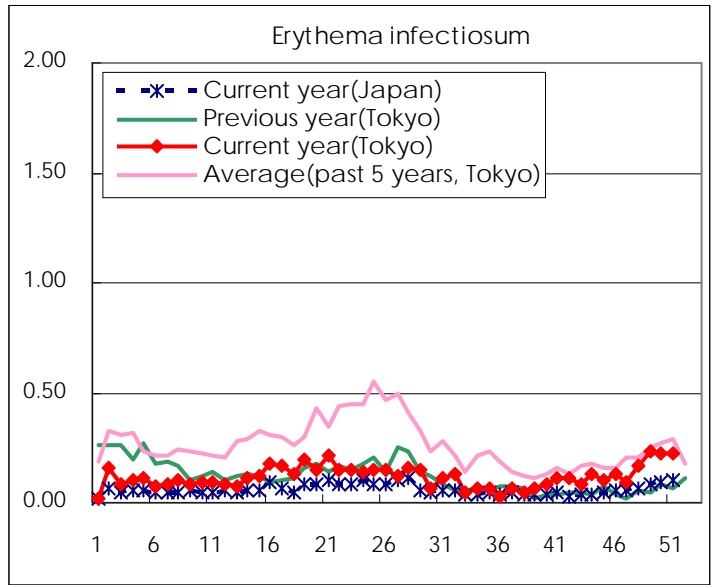
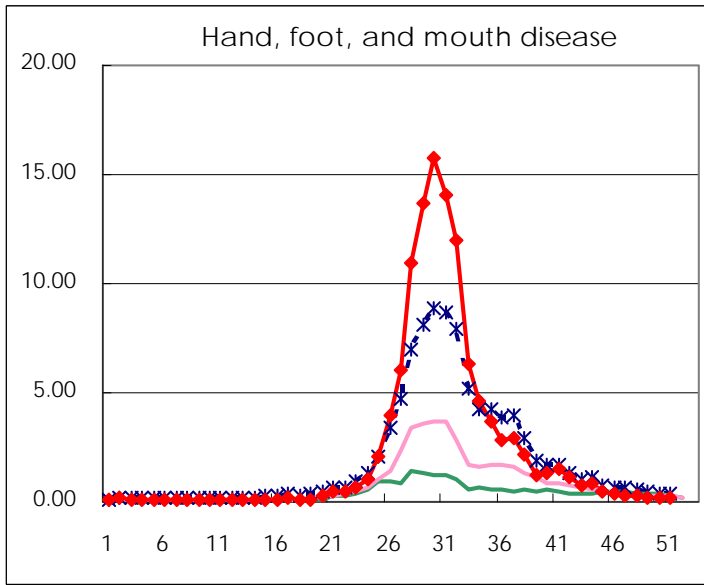
Number of patients with the diseases to be reported
by the designated clinics and hospitals

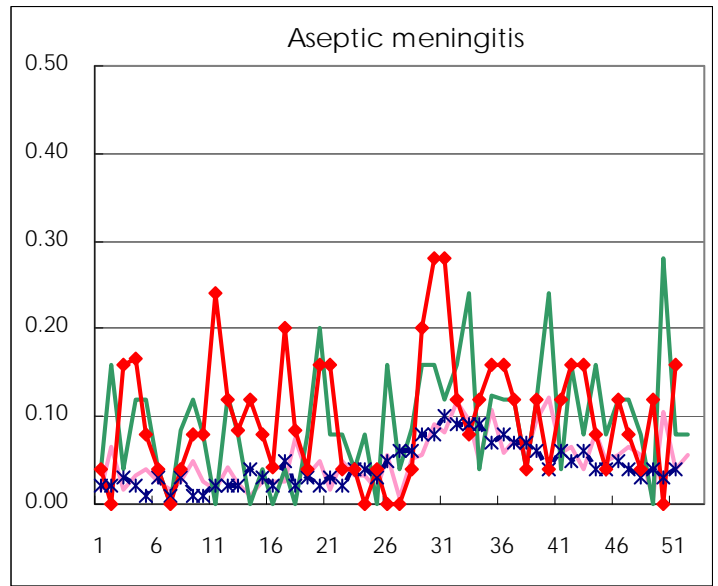
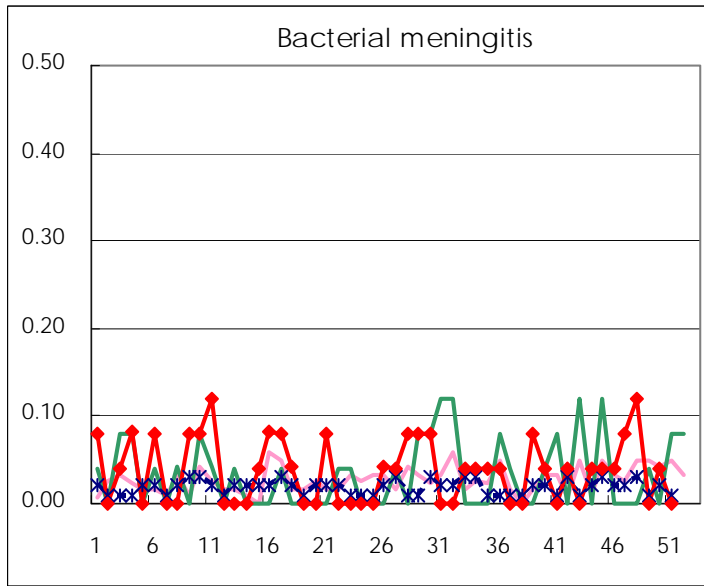
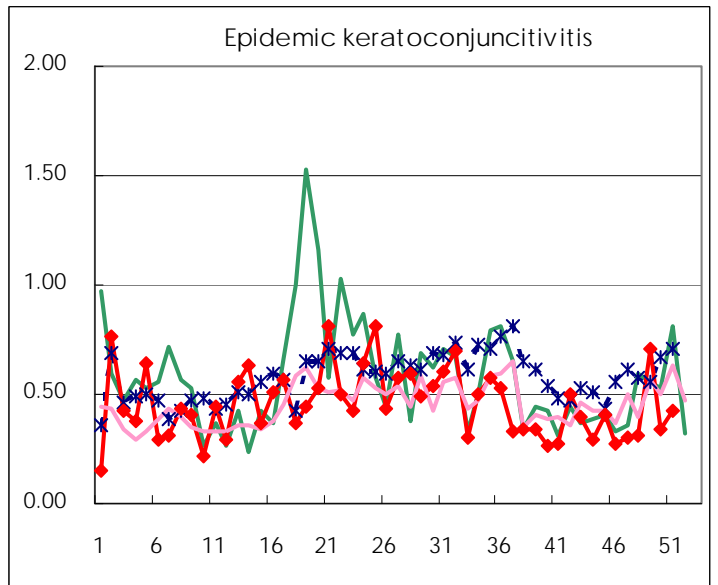
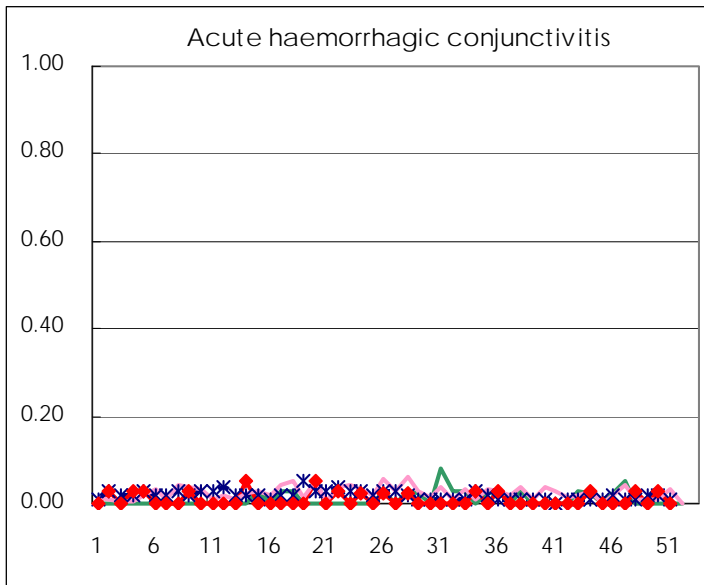
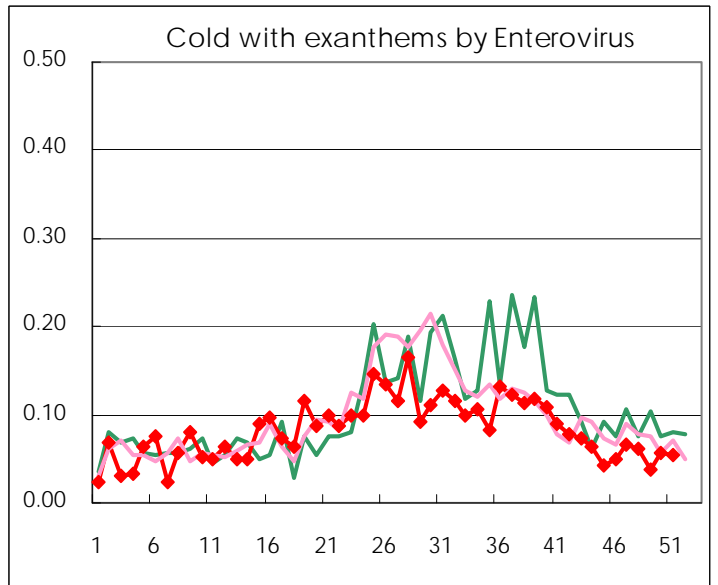
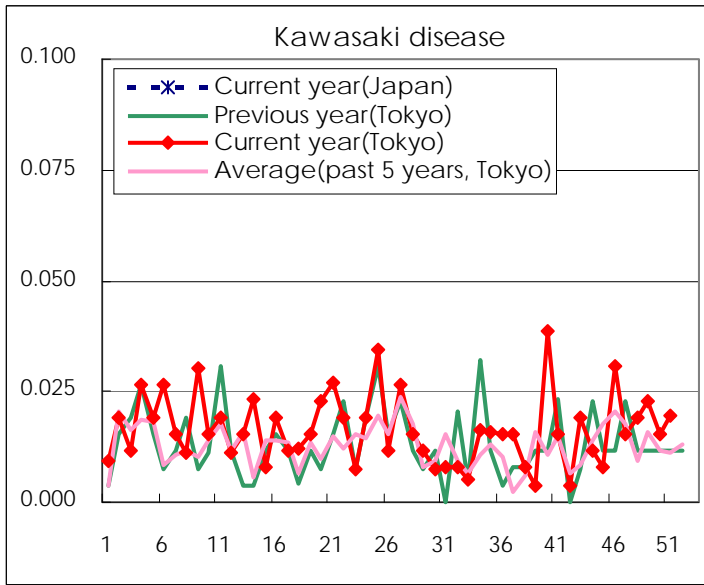
Diseases	Tokyo				
	48th	49th	50th	51st	/sentinel
Respiratory syncytial virus infection	245	218	214	178	0.70
Pharyngoconjunctival fever	172	154	157	163	0.64
Group A streptococcal pharyngitis	536	606	671	603	2.36
Infectious gastroenteritis	3,946	5,598	6,939	7,535	29.43
Chickenpox	351	348	400	439	1.71
Hand, foot, and mouth disease	65	61	56	41	0.16
Erythema infectiosum	44	62	59	57	0.22
Exanthem subitum	153	178	134	130	0.51
Pertussis	1		4		
Herpangina	20	13	9	3	0.01
Mumps	40	56	44	60	0.23
Kawasaki disease	5	6	4	5	0.02
Cold with exanthems by Enterovirus	16	10	15	14	0.05
Influenza	173	282	303	451	1.11
Acute hemorrhagic conjunctivitis	1		1		
Epidemic keratoconjunctivitis	12	27	13	15	0.43
Bacterial meningitis	3		1		
Aseptic meningitis	1	3		4	0.16
Mycoplasma pneumonia	9	7	10	5	0.20
Chlamydial pneumonia (excluding psittacosis)					
Infectious gastroenteritis (only by Rotavirus)	3	3	5	5	0.20
Influenza-Associated Hospitalizations	1	2	6	3	0.12

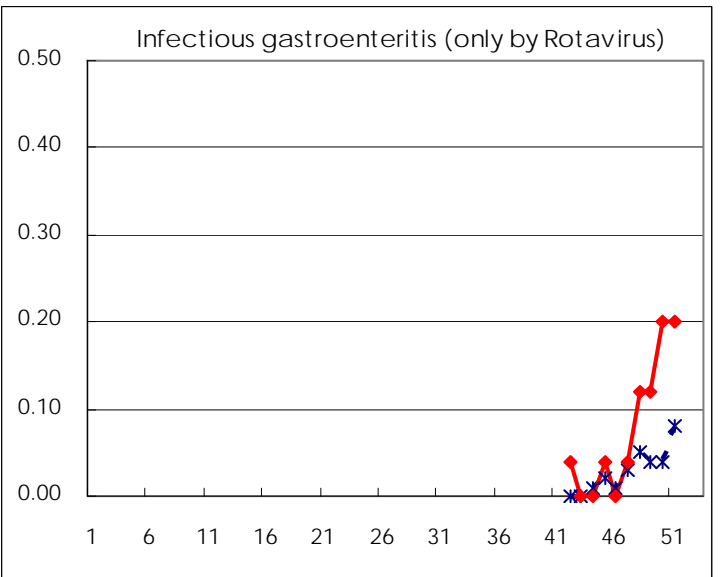
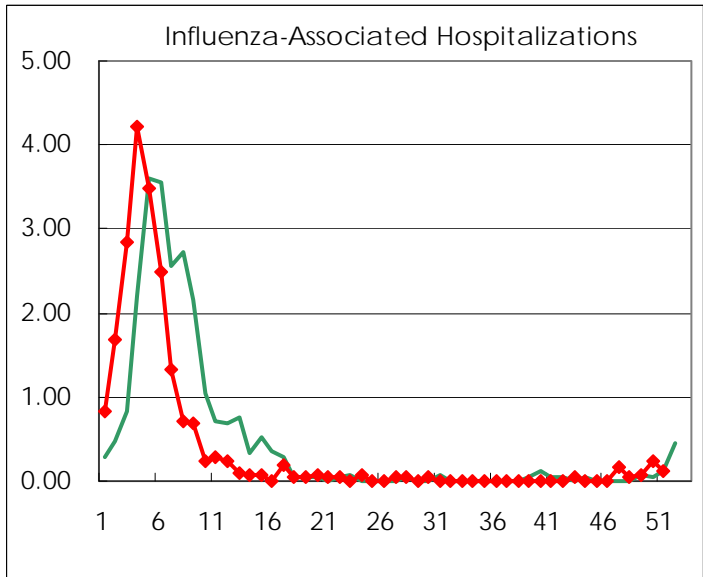
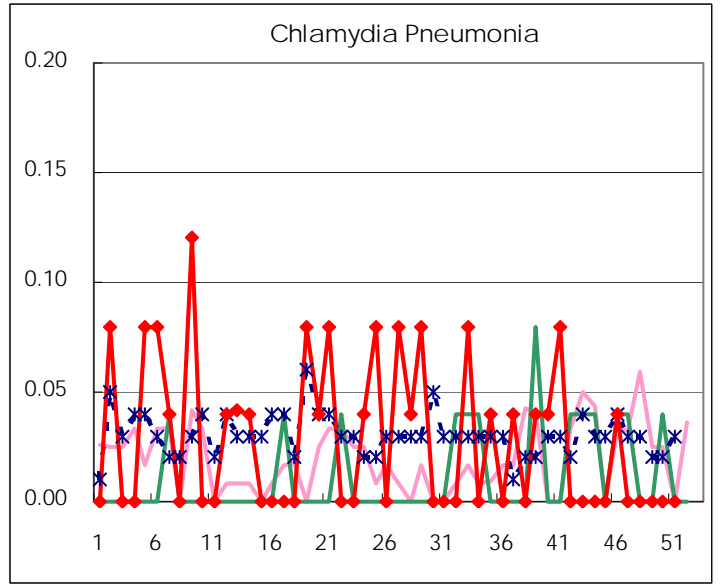
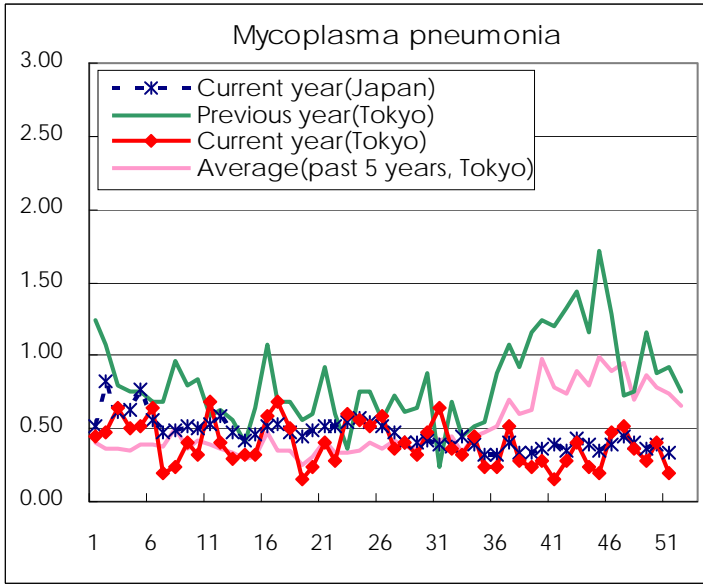
(Blank means 0.)

Disease Trend Graph (weekly reported cases per sentinel in comparison)









Number of sentinel facilities for weekly reporting		
Types of sentinels	Number of sentinels	Sentinels having reported
Pediatric	264	256
Influenza	419	405
Ophthalmic	39	35
Specially-designated	25	25

Tokyo Metropolitan Government
Infectious Disease Surveillance Center