
INFECTIOUS DISEASES WEEKLY REPORT

TOKYO IDWR

Tokyo Metropolitan Infectious Disease Surveillance Center

30 January 2014 / Number 4

Surveillance System in Tokyo, Japan

The infectious diseases which all physicians must report

All physicians must report to health centers the incidence of the diseases which are shown at page one. Health centers electronically report the individual cases to Tokyo Metropolitan Infectious Disease Surveillance Center.

The infectious diseases required to be reported by the sentinels

The numbers of patients who visit the sentinel clinics or hospitals during a week are reported to health centers in Tokyo. And they electronically report the numbers to Tokyo Metropolitan Infectious Disease Surveillance Center. We have about 500 sentinel clinics and hospitals in Tokyo.

1st Week is early January and 52nd Week is end of December.

Tokyo Metropolitan Institute of Public Health

TEL:81-3-3363-3213 FAX:81-3-5332-7365

e-mail:idsc@tokyo-eiken.go.jp

URL:idsc.tokyo-eiken.go.jp/

Number of patients with the diseases which all physicians must report

Category	Diseases	Tokyo					Japan		
		1st	2nd	3rd	4th	Cum 2014	4th	Cum 2014	
I	Ebola hemorrhagic fever								
	Crimean-Congo hemorrhagic fever								
	Smallpox								
	South American hemorrhagic fever								
	Plague								
	Marburg disease								
	Lassa fever								
II	Acute poliomyelitis								
	Tuberculosis	4	73	43	52	172	315	1,189	
	Diphtheria								
	Severe Acute Respiratory Syndrome(SARS)								
	Avian influenza H5N1								
※	Avian influenza H7N9								
III	Cholera								
	Shigellosis		2			2	2	6	
	Enterohemorrhagic Escherichia coli infection						8	28	
	Typhoid fever			1	1	2	1	4	
	Paratyphoid fever		1			1	1	1	
IV	Hepatitis E		1		2	3	4	8	
	West Nile fever								
	Hepatitis A						2	8	
	Echinococcosis								
	Yellow fever								
	Psittacosis		1			1		1	
	Omsk hemorrhagic fever								
	Relapsing fever								
	Kyasanur forest disease								
	Q fever								
	Rabies								
	Coccidioidomycosis								
	Monkeypox								
	Severe Fever with Thrombocytopenia Syndrome								
	Hemorrhagic fever with renal syndrome								
	Western equine encephalitis								
	Tick-borne encephalitis								
	Anthrax								
	Chikungunya fever								
	Scrub typhus(Tsutsugamushi disease)		1				1		13
	Dengue fever			1	2	3	3		8
	Eastern equine encephalitis								
	Avian influenza (excluding H5N1 and H7N9)								
	Nipah virus infection								
	Japanese spotted fever								
	Japanese encephalitis								
	Hantavirus pulmonary syndrome								
	Herpes B virus infection								
	Glanders								
	Brucellosis								
	Venezuelan equine encephalitis								
	Hendra virus infection								
	Epidemic typhus								
Botulism									
Malaria								5	
Tularemia									
Lyme disease									
Lyssavirus infection(excluding rabies)									
Rift valley fever									
Melioidosis									
Legionellosis		8	1	4	13	16		73	
Leptospirosis								2	
Rocky mountain spotted fever									

Category	Diseases	Tokyo					Japan	
		1st	2nd	3rd	4th	Cum 2014	4th	Cum 2014
V	Amebiasis		2	2	3	7	12	49
	Viral hepatitis(excluding hepatitis A and E)		2	2		4	3	13
	Acute encephalitis(excluding JE and WNE)		1		1	2	10	36
	Cryptosporidiosis		1		1	2		2
	Creutzfeldt-Jakob disease						1	7
	Severe invasive streptococcal infections(TSLS)			3	3	6	3	18
	Acquired immunodeficiency syndrome (AIDS)		12	16	5	33	16	65
	Giardiasis						1	2
	Invasive <i>Haemophilus influenzae</i> disease		3			3	4	21
	Invasive meningococcal disease		1			1	1	4
	Invasive pneumococcal disease		14	3	4	21	15	144
	Congenital rubella syndrome		1		1	2		5
	Syphilis		7	8	14	29	13	64
	Tetanus		2			2		6
	Vancomycin-resistant <i>S. aureus</i> infection							
	Vancomycin-resistant <i>Enterococcus</i> infection						1	3
	Rubella		3	2	4	9	9	32
Measles			1		1	18	46	

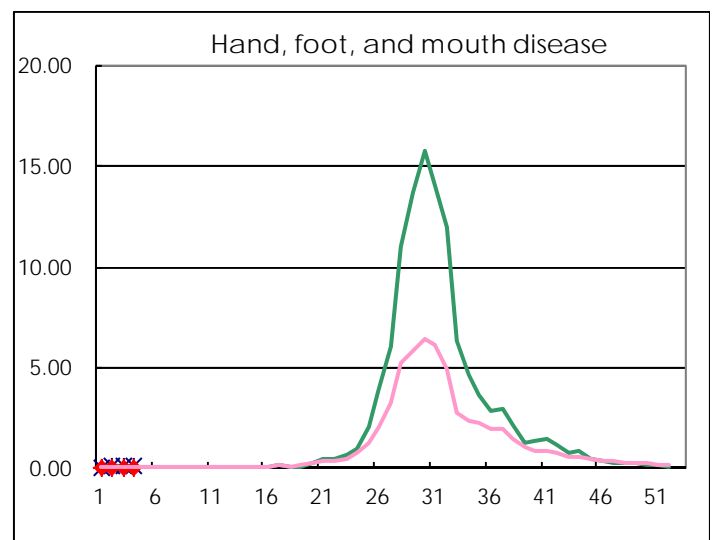
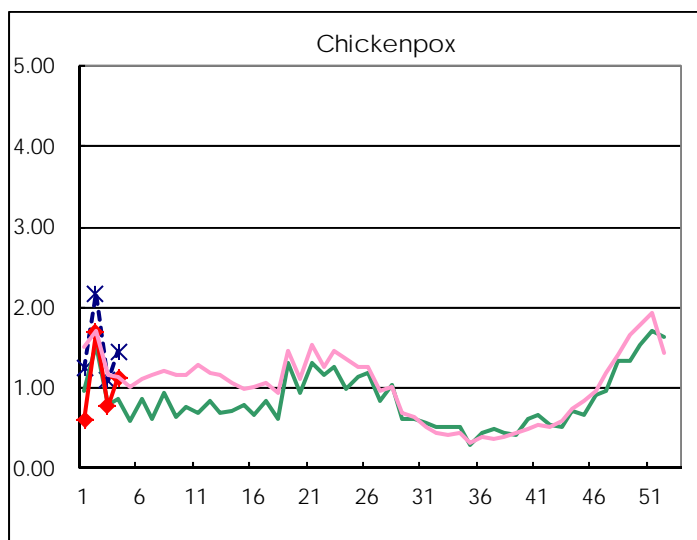
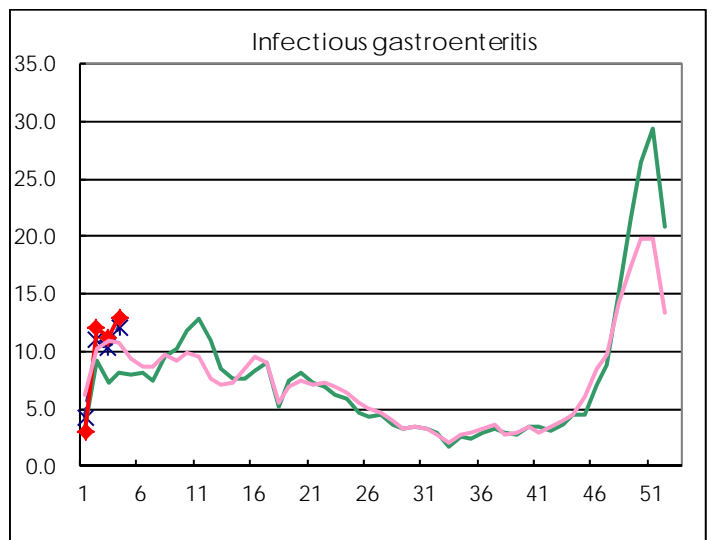
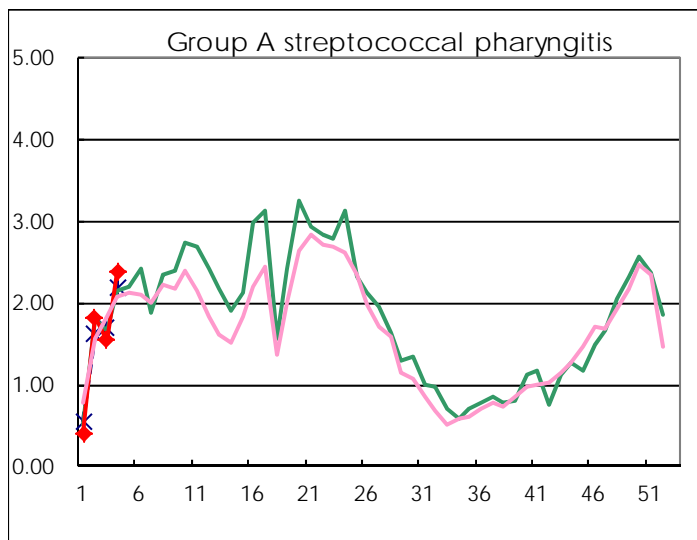
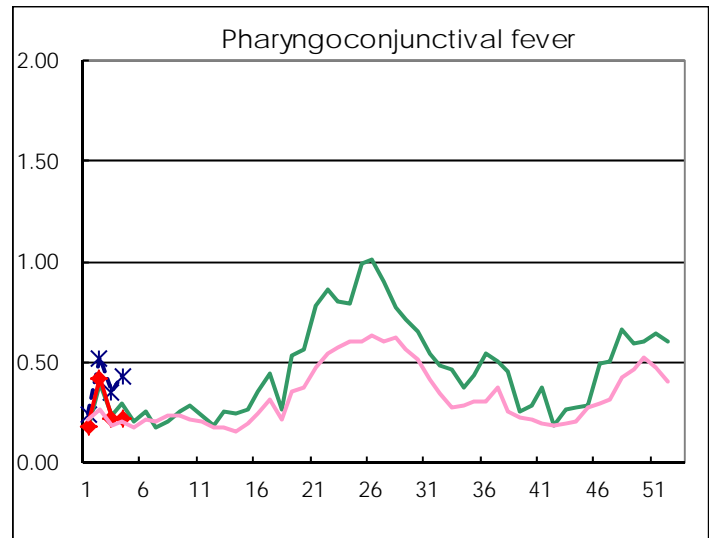
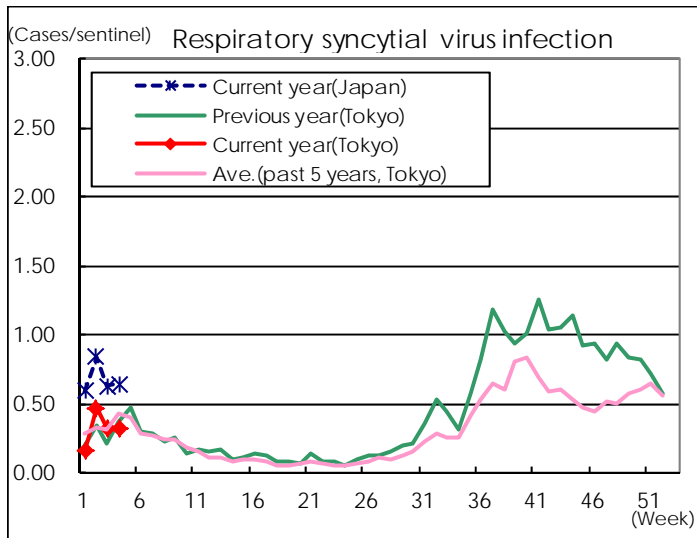
※ Designated infectious disease

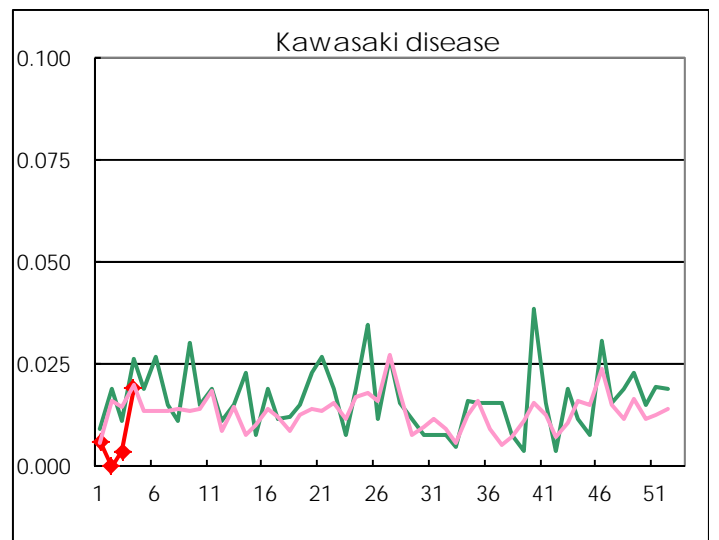
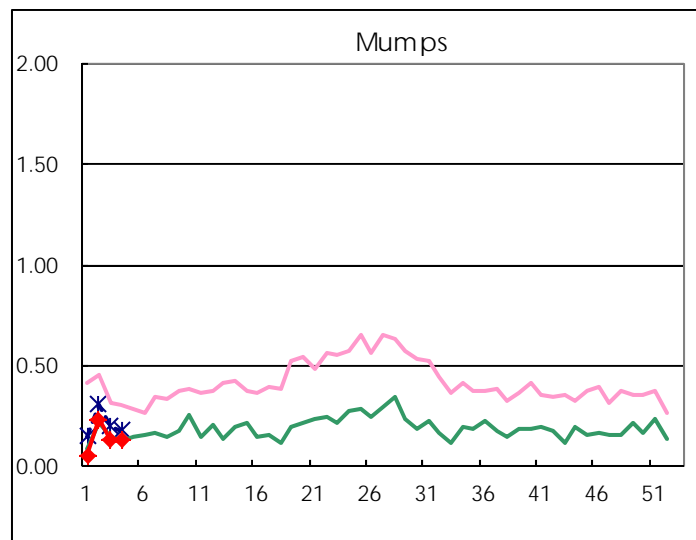
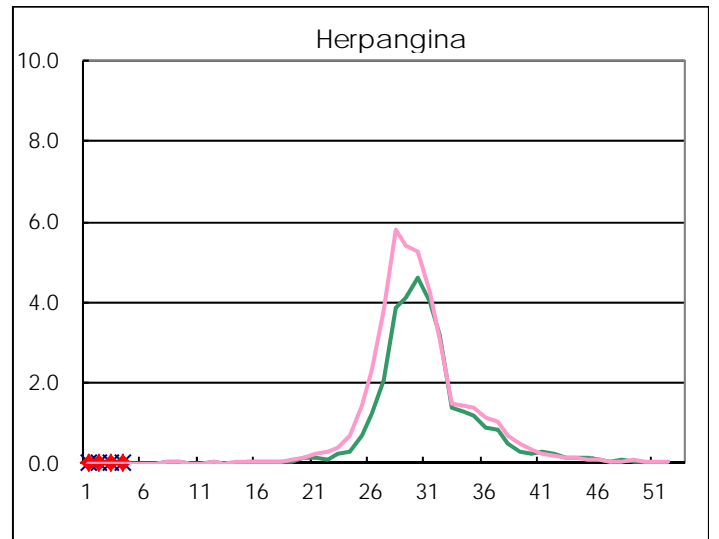
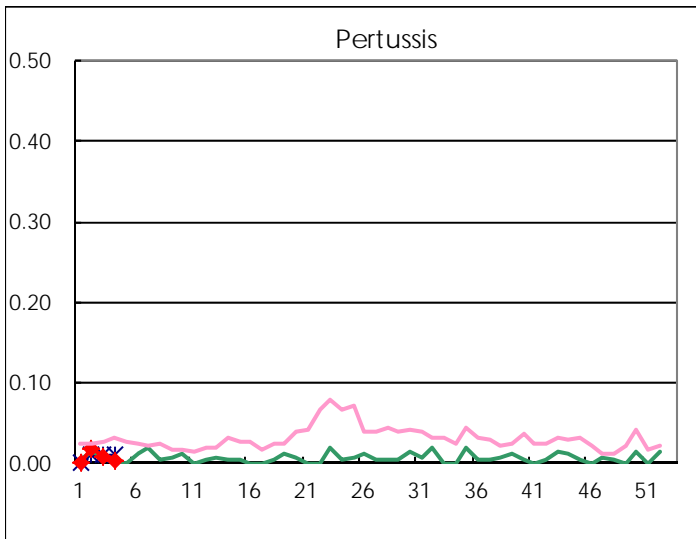
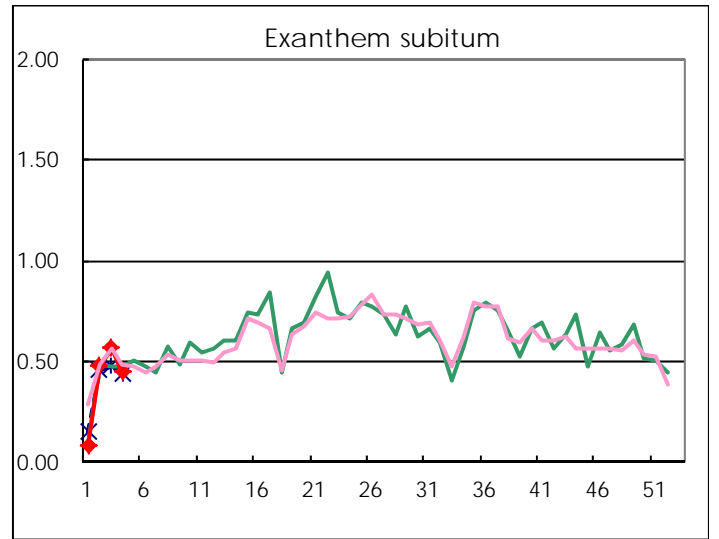
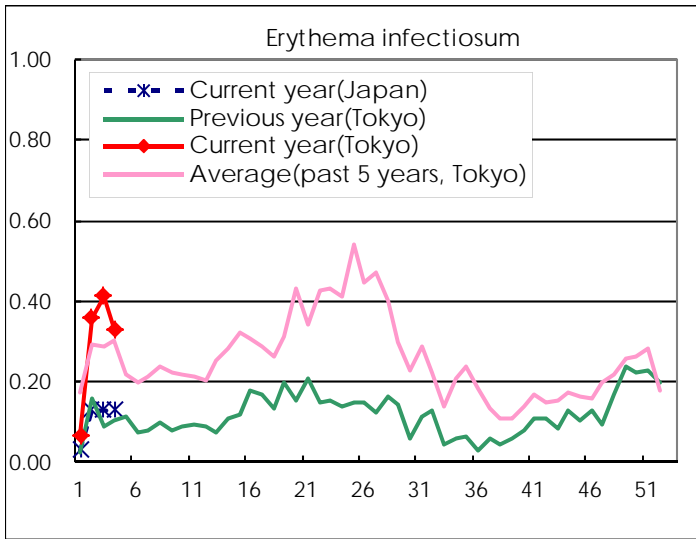
Number of patients with the diseases to be reported
by the designated clinics and hospitals

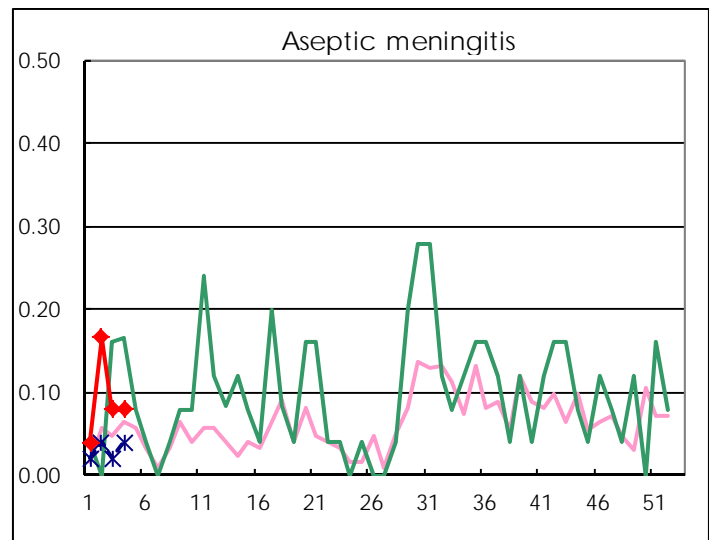
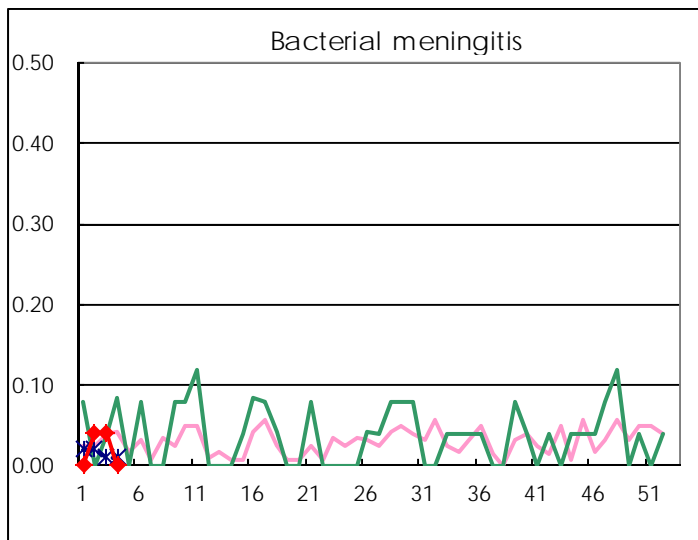
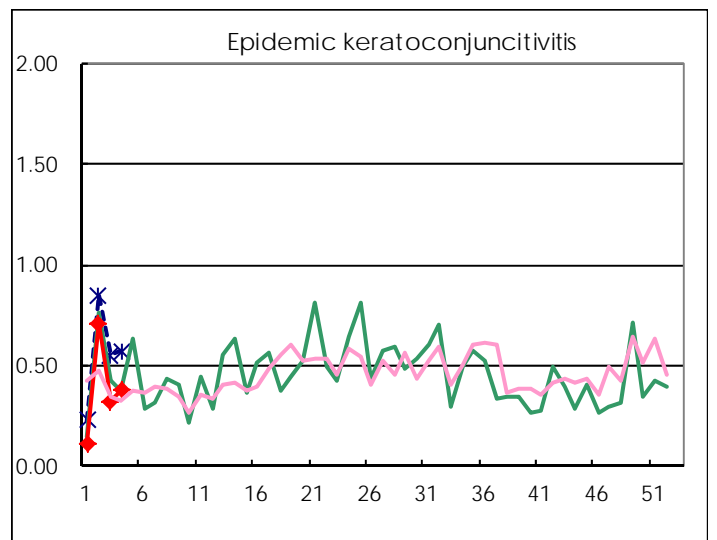
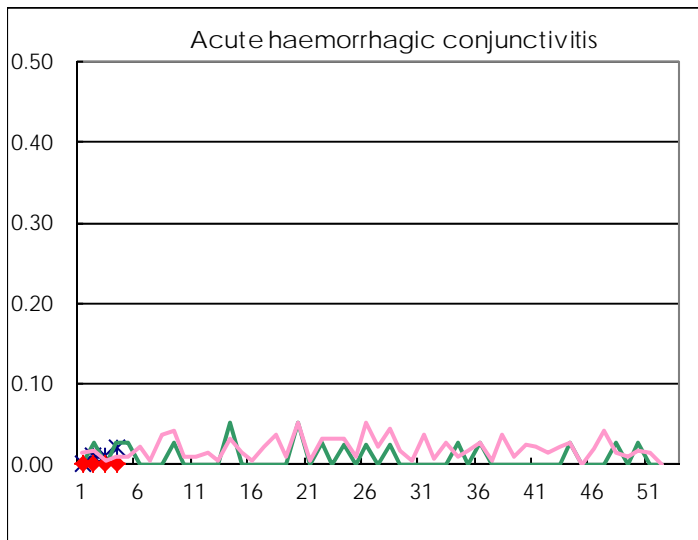
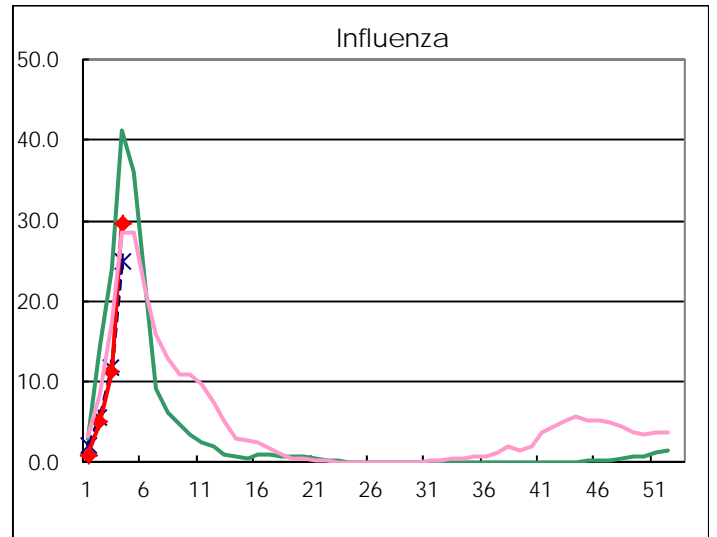
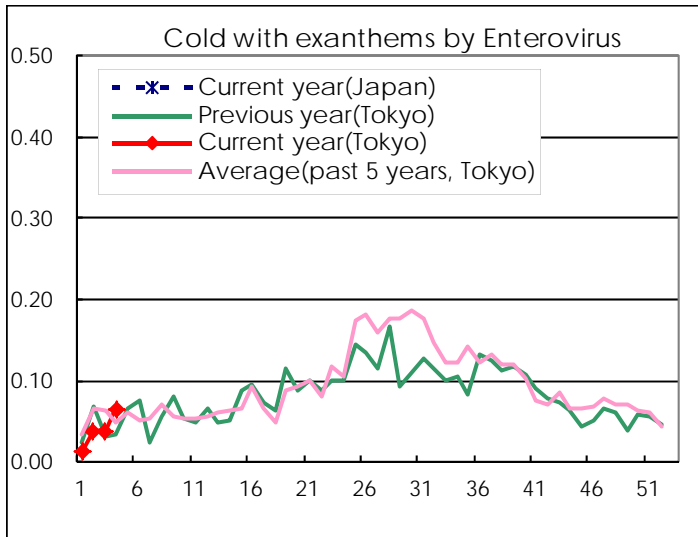
Diseases	Tokyo				
	1st	2nd	3rd	4th	/sentinel
Respiratory syncytial virus infection	26	123	85	85	0.32
Pharyngoconjunctival fever	30	111	58	57	0.22
Group A streptococcal pharyngitis	67	479	404	622	2.37
Infectious gastroenteritis	493	3,149	2,936	3,397	12.97
Chickenpox	99	442	201	298	1.14
Hand, foot, and mouth disease	2	21	13	9	0.03
Erythema infectiosum	11	94	108	87	0.33
Exanthem subitum	13	125	149	118	0.45
Pertussis		5	2	1	0.00
Herpangina	1	4	2	4	0.02
Mumps	9	62	34	34	0.13
Kawasaki disease	1		1	5	0.02
Cold with exanthems by Enterovirus	2	10	10	17	0.06
Influenza	280	2,098	4,639	12,317	29.68
Acute hemorrhagic conjunctivitis					
Epidemic keratoconjunctivitis	3	27	12	14	0.38
Bacterial meningitis		1	1		
Aseptic meningitis	1	4	2	2	0.08
Mycoplasma pneumonia		5	4	4	0.16
Chlamydial pneumonia (excluding psittacosis)			1		
Infectious gastroenteritis (only by Rotavirus)	2	2	1	4	0.16
Influenza-Associated Hospitalizations	8	31	42	61	2.44

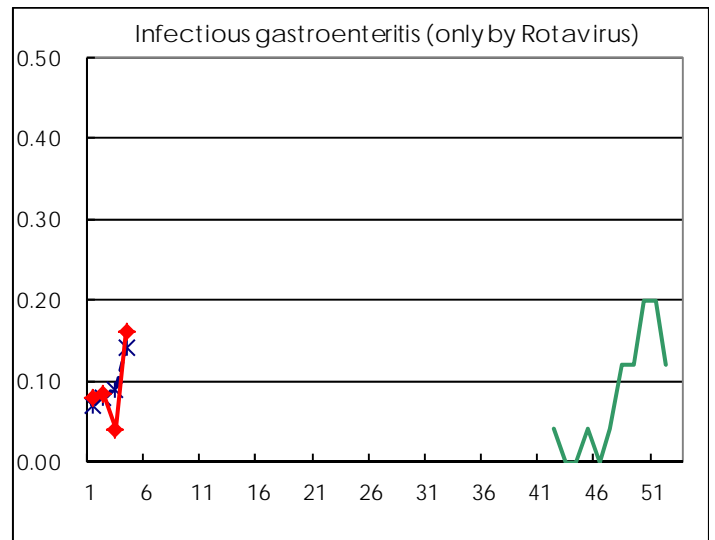
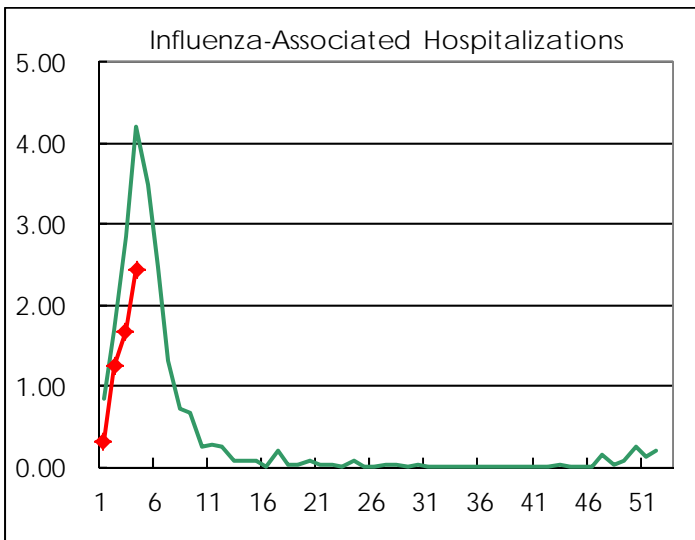
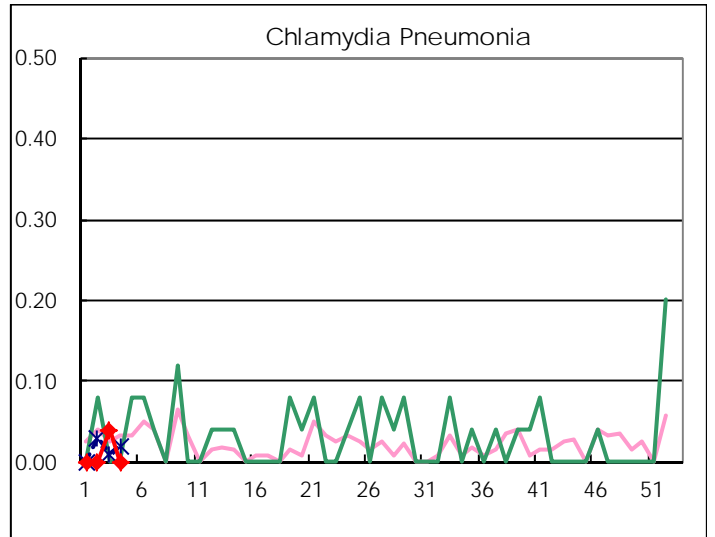
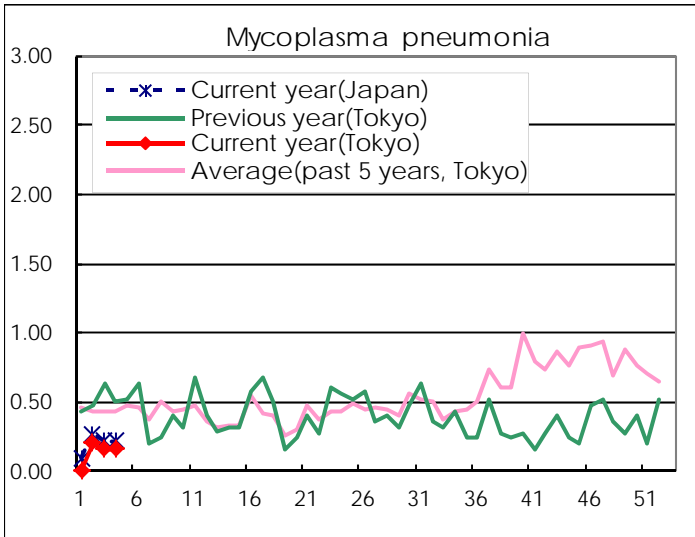
(Blank means 0.)

Disease Trend Graph (weekly reported cases per sentinel in comparison)









Number of sentinel facilities for weekly reporting		
Types of sentinels	Number of sentinels	Sentinels having reported
Pediatric	264	262
Influenza	419	415
Ophthalmic	39	37
Specially-designated	25	25

Tokyo Metropolitan Government
Infectious Disease Surveillance Center