
INFECTIOUS DISEASES WEEKLY REPORT

TOKYO IDWR

Tokyo Metropolitan Infectious Disease Surveillance Center

13 March 2014 / Number 10

Surveillance System in Tokyo, Japan

The infectious diseases which all physicians must report

All physicians must report to health centers the incidence of the diseases which are shown at page one. Health centers electronically report the individual cases to Tokyo Metropolitan Infectious Disease Surveillance Center.

The infectious diseases required to be reported by the sentinels

The numbers of patients who visit the sentinel clinics or hospitals during a week are reported to health centers in Tokyo. And they electronically report the numbers to Tokyo Metropolitan Infectious Disease Surveillance Center. We have about 500 sentinel clinics and hospitals in Tokyo.

1st Week is early January and 52nd Week is end of December.

Tokyo Metropolitan Institute of Public Health

TEL:81-3-3363-3213 FAX:81-3-5332-7365

e-mail:idsc@tokyo-eiken.go.jp

URL:idsc.tokyo-eiken.go.jp/

Number of patients with the diseases which all physicians must report

Category	Diseases	Tokyo					Japan	
		7th	8th	9th	10th	Cum 2014	10th	Cum 2014
I	Ebola hemorrhagic fever							
	Crimean-Congo hemorrhagic fever							
	Smallpox							
	South American hemorrhagic fever							
	Plague							
	Marburg disease							
	Lassa fever							
II	Acute poliomyelitis							
	Tuberculosis	52	78	55	71	567	367	3,821
	Diphtheria							
	Severe Acute Respiratory Syndrome(SARS)							
	Avian influenza H5N1							
※	Avian influenza H7N9							
III	Cholera							
	Shigellosis			1		3	3	16
	Enterohemorrhagic Escherichia coli infection	1	1	1		3	5	62
	Typhoid fever	1			1	5	2	9
	Paratyphoid fever					1		1
IV	Hepatitis E	1	1	1	1	7	3	25
	West Nile fever							
	Hepatitis A	1			4	8	48	165
	Echinococcosis							2
	Yellow fever							
	Psittacosis					1		1
	Omsk hemorrhagic fever							
	Relapsing fever							
	Kyasanur forest disease							
	Q fever							
	Rabies							
	Coccidioidomycosis							
	Monkeypox							
	Severe Fever with Thrombocytopenia Syndrome						1	3
	Hemorrhagic fever with renal syndrome							
	Western equine encephalitis							
	Tick-borne encephalitis							
	Anthrax							
	Chikungunya fever							
	Scrub typhus(Tsutsugamushi disease)				1	2		26
	Dengue fever	2	1			8		18
	Eastern equine encephalitis							
	Avian influenza (excluding H5N1 and H7N9)							
	Nipah virus infection							
	Japanese spotted fever							3
	Japanese encephalitis							
	Hantavirus pulmonary syndrome							
	Herpes B virus infection							
	Glanders							
	Brucellosis				1	1	1	3
	Venezuelan equine encephalitis							
	Hendra virus infection							
	Epidemic typhus							
Botulism						1	1	
Malaria	1	1	1		3		9	
Tularemia								
Lyme disease								
Lyssavirus infection(excluding rabies)								
Rift valley fever								
Melioidosis								
Legionellosis	2		1		19	14	187	
Leptospirosis							3	
Rocky mountain spotted fever								

Category	Diseases	Tokyo					Japan	
		7th	8th	9th	10th	Cum 2014	10th	Cum 2014
V	Amebiasis	3	3	5	8	34	10	167
	Viral hepatitis(excluding hepatitis A and E)	2		4		10	2	42
	Acute encephalitis(excluding JE and WNE)	1	1	2	2	12	8	111
	Cryptosporidiosis	1				3		5
	Creutzfeldt-Jakob disease	1				1	2	25
	Severe invasive streptococcal infections(TSLS)	1		1	2	12	4	47
	Acquired immunodeficiency syndrome (AIDS)	8	13	13	8	87	23	240
	Giardiasis	2				2	1	8
	Invasive <i>Haemophilus influenzae</i> disease					4	3	35
	Invasive meningococcal disease					1	1	11
	Invasive pneumococcal disease	5	2	2	2	40	20	367
	Congenital rubella syndrome			1		3		7
	Syphilis	6	4	10	10	77	14	239
	Tetanus				1	4	1	14
	Vancomycin-resistant <i>S. aureus</i> infection							
	Vancomycin-resistant Enterococcus infection				1	2	1	8
	Rubella	1	5	5	5	27	6	94
Measles	1	2	8	8	27	23	172	

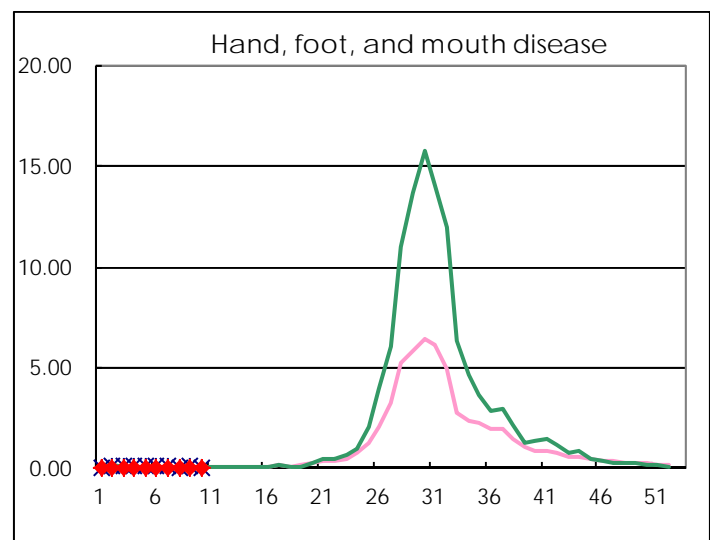
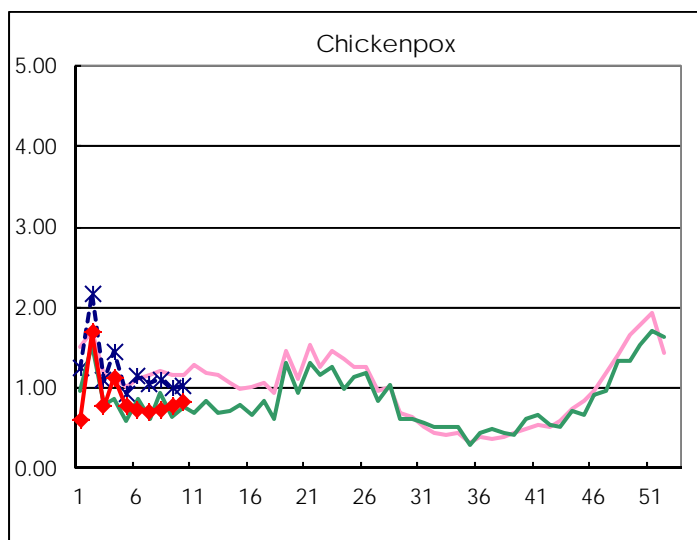
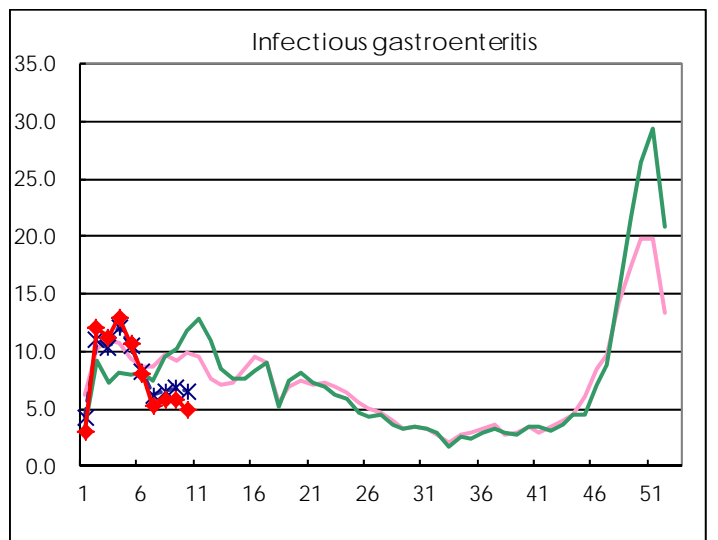
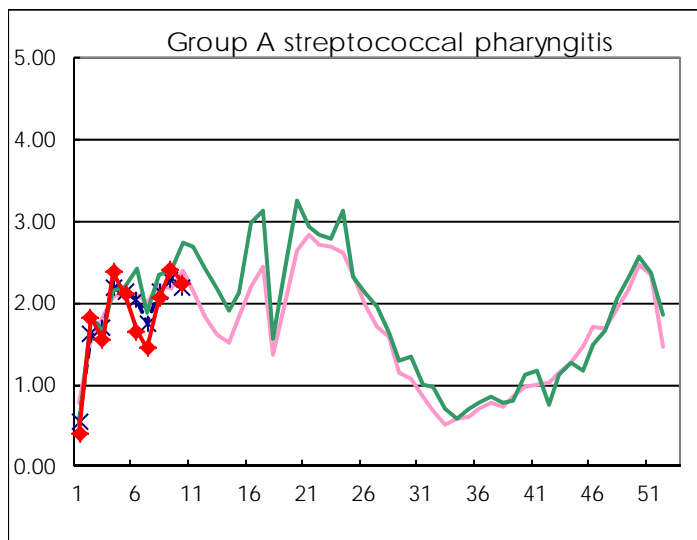
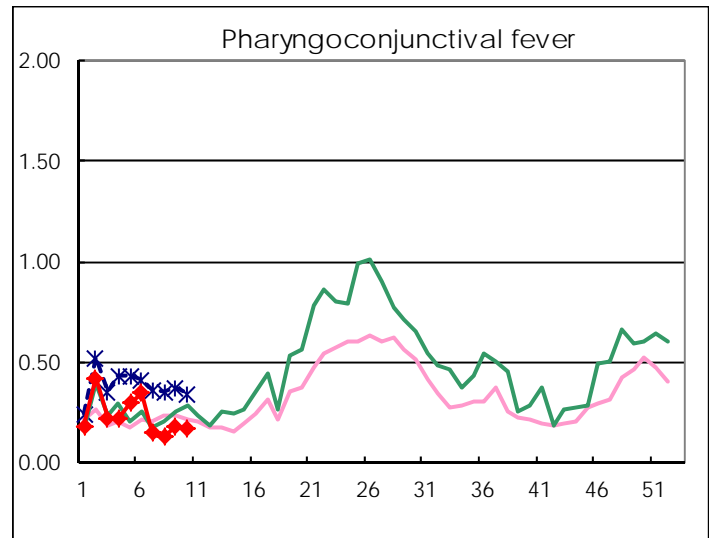
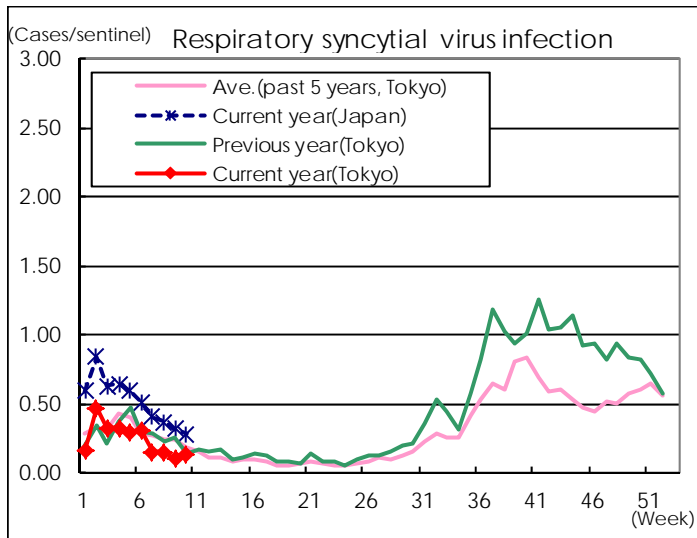
※ Designated infectious disease

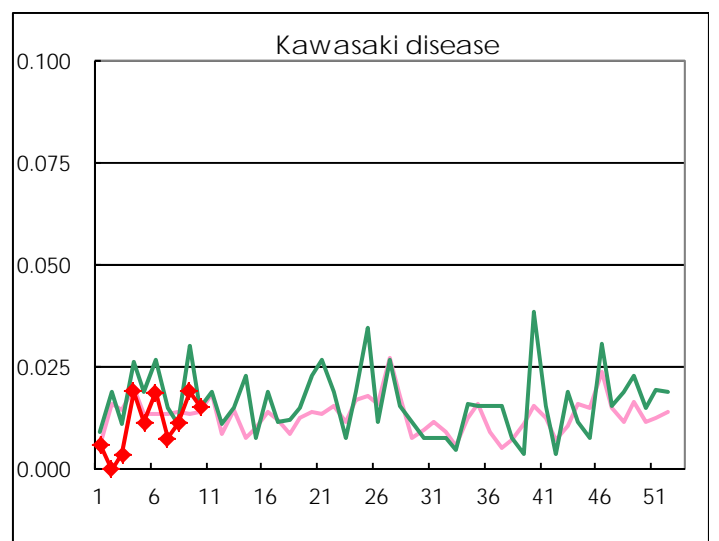
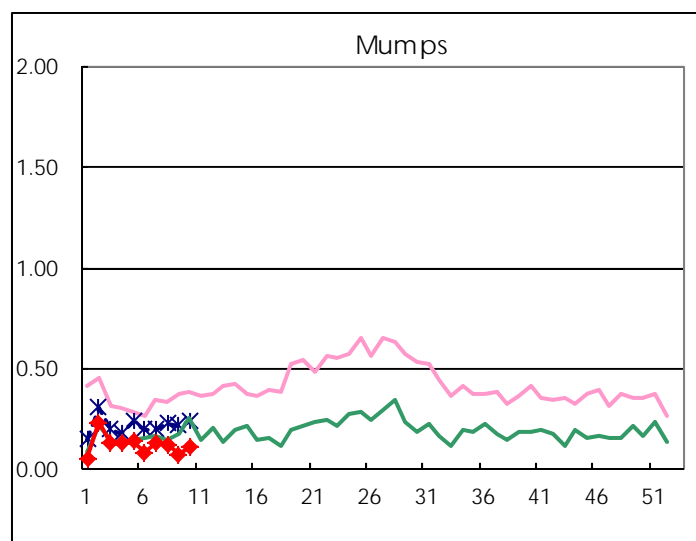
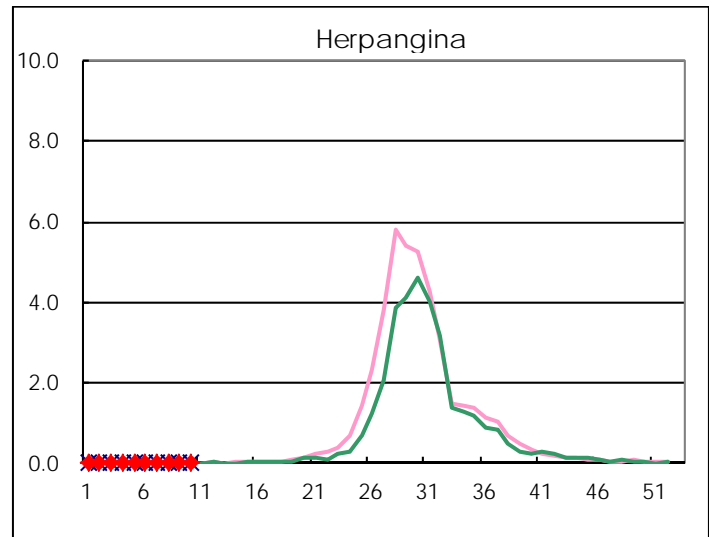
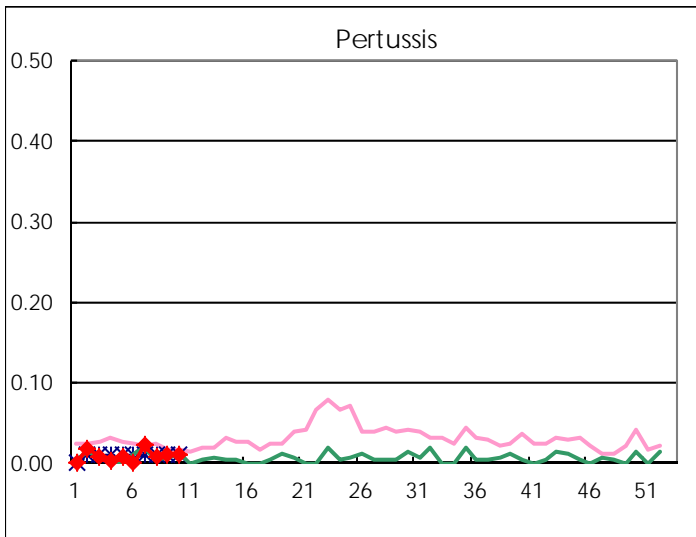
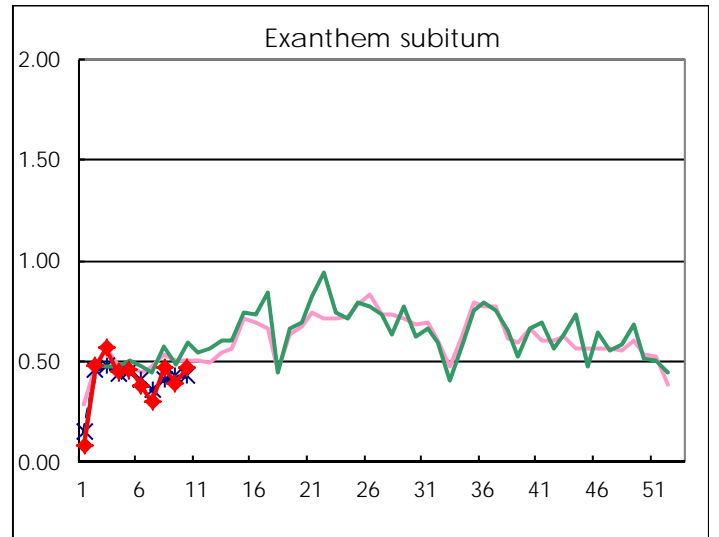
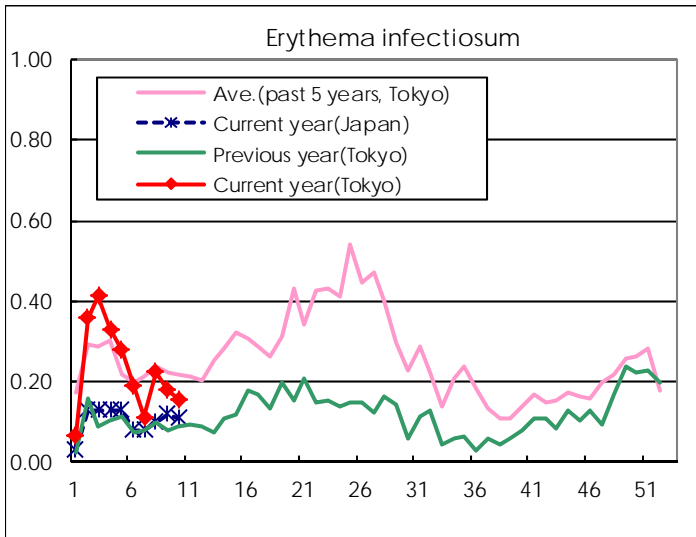
Number of patients with the diseases to be reported
by the designated clinics and hospitals

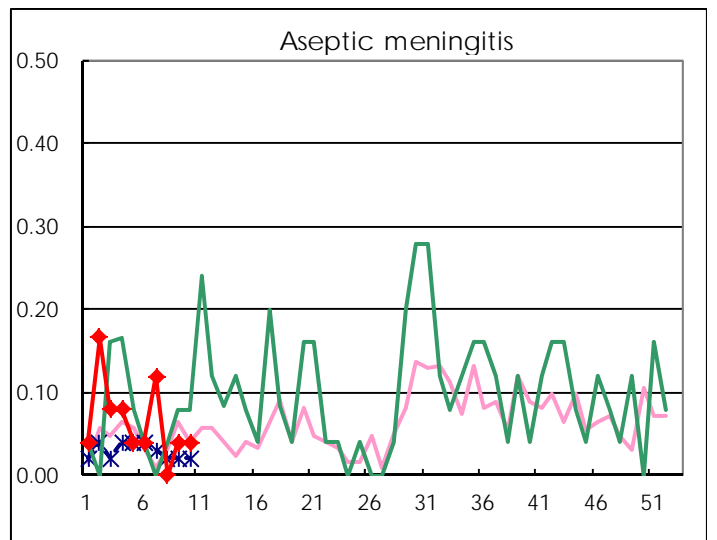
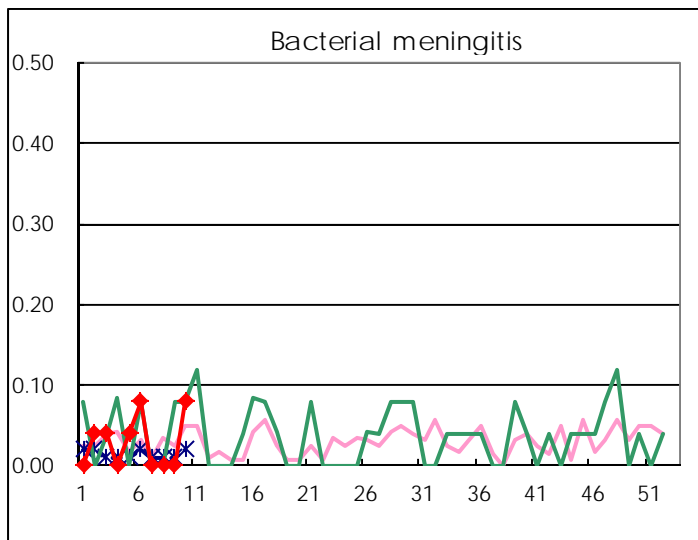
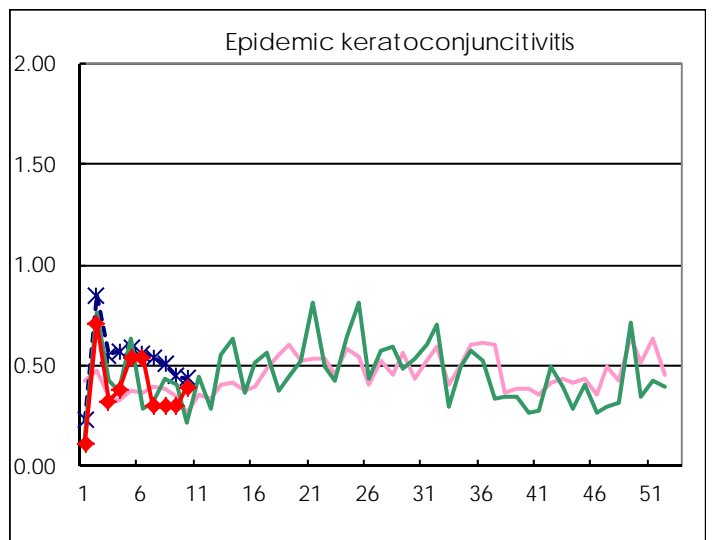
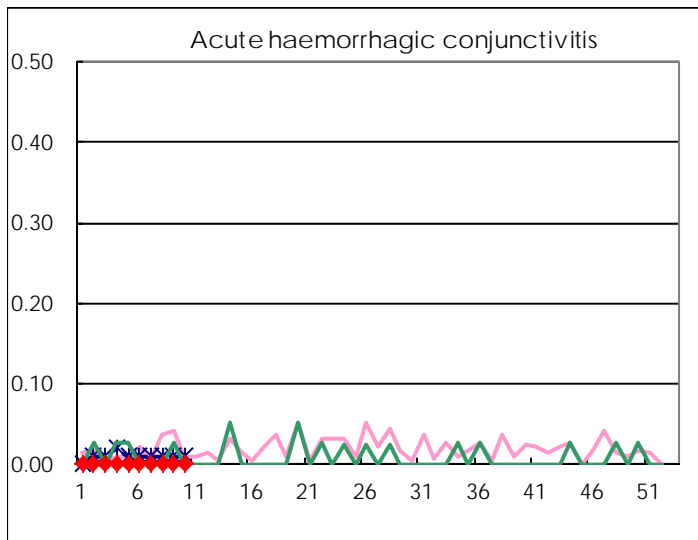
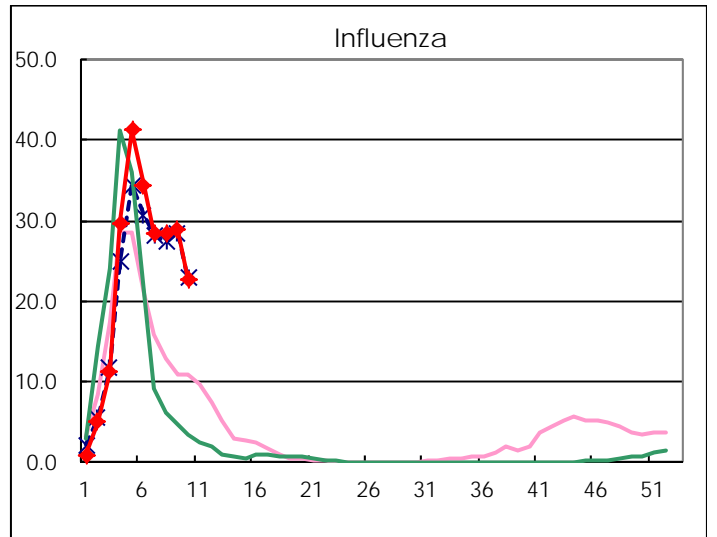
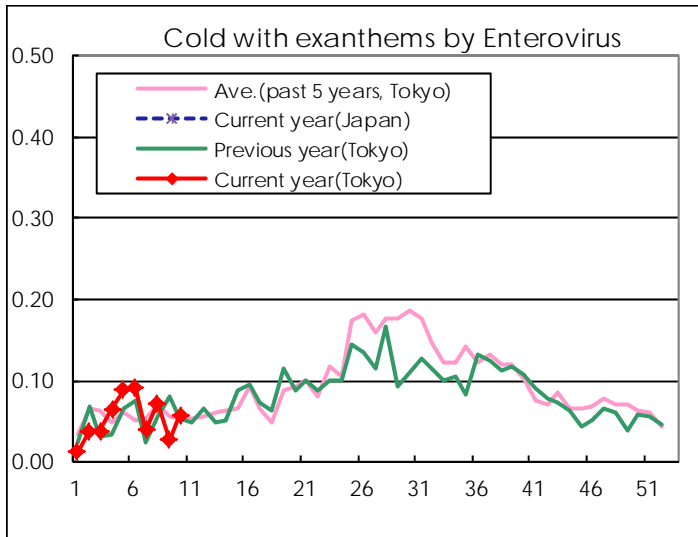
Diseases	Tokyo				
	7th	8th	9th	10th	/sentinel
Respiratory syncytial virus infection	38	39	26	34	0.13
Pharyngoconjunctival fever	40	34	47	44	0.17
Group A streptococcal pharyngitis	374	541	631	584	2.25
Infectious gastroenteritis	1,353	1,528	1,531	1,272	4.89
Chickenpox	184	192	204	215	0.83
Hand, foot, and mouth disease	16	9	12	11	0.04
Erythema infectiosum	29	59	47	41	0.16
Exanthem subitum	78	123	103	123	0.47
Pertussis	6	2	3	3	0.01
Herpangina	4	3		2	0.01
Mumps	34	33	20	29	0.11
Kawasaki disease	2	3	5	4	0.02
Cold with exanthems by Enterovirus	10	19	7	15	0.06
Influenza	11,743	11,911	11,973	9,419	22.75
Acute hemorrhagic conjunctivitis					
Epidemic keratoconjunctivitis	11	11	11	15	0.39
Bacterial meningitis				2	0.08
Aseptic meningitis	3		1	1	0.04
Mycoplasma pneumonia	4	3	3	5	0.20
Chlamydial pneumonia (excluding psittacosis)	1	1	2	1	0.04
Infectious gastroenteritis (only by Rotavirus)	2	2	9	4	0.16
Influenza-Associated Hospitalizations	38	42	49	35	1.40

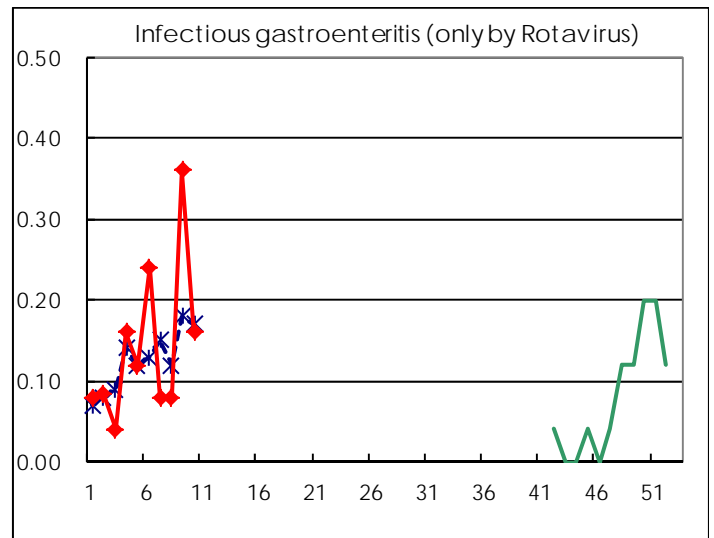
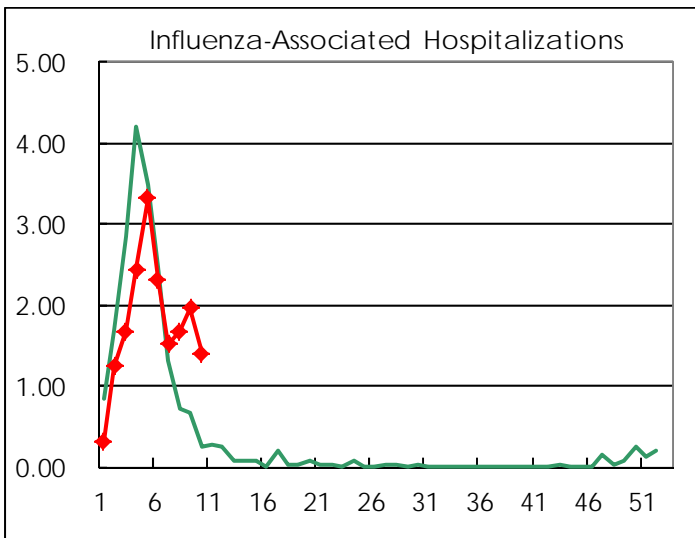
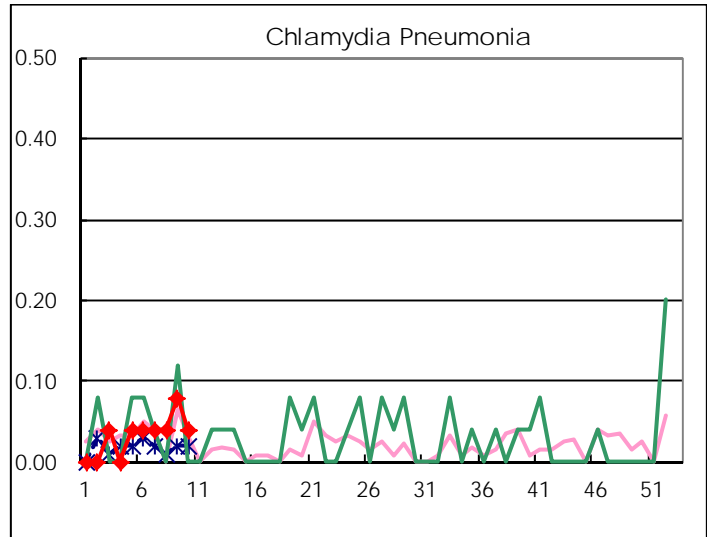
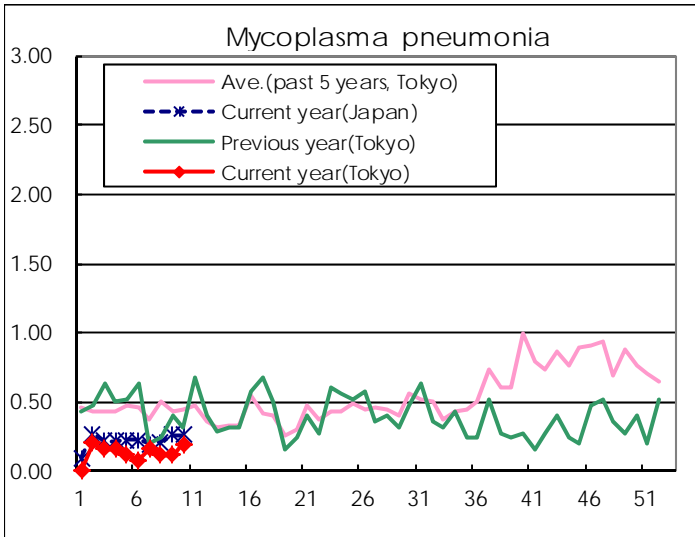
(Blank means 0.)

Disease Trend Graph (weekly reported cases per sentinel in comparison)









Number of sentinel facilities for weekly reporting		
Types of sentinels	Number of sentinels	Sentinels having reported
Pediatric	264	260
Influenza	419	414
Ophthalmic	39	38
Specially-designated	25	25

Tokyo Metropolitan Government
Infectious Disease Surveillance Center