
INFECTIOUS DISEASES WEEKLY REPORT

TOKYO IDWR

Tokyo Metropolitan Infectious Disease Surveillance Center

24 April 2014 / Number 16

Surveillance System in Tokyo, Japan

The infectious diseases which all physicians must report

All physicians must report to health centers the incidence of the diseases which are shown at page one. Health centers electronically report the individual cases to Tokyo Metropolitan Infectious Disease Surveillance Center.

The infectious diseases required to be reported by the sentinels

The numbers of patients who visit the sentinel clinics or hospitals during a week are reported to health centers in Tokyo. And they electronically report the numbers to Tokyo Metropolitan Infectious Disease Surveillance Center. We have about 500 sentinel clinics and hospitals in Tokyo.

1st Week is early January and 52nd Week is end of December.

Tokyo Metropolitan Institute of Public Health

TEL:81-3-3363-3213 FAX:81-3-5332-7365

e-mail:idsc@tokyo-eiken.go.jp

URL:idsc.tokyo-eiken.go.jp/

Number of patients with the diseases which all physicians must report

Category	Diseases	Tokyo					Japan	
		13th	14th	15th	16th	Cum 2014	16th	Cum 2014
I	Ebola hemorrhagic fever							
	Crimean-Congo hemorrhagic fever							
	Smallpox							
	South American hemorrhagic fever							
	Plague							
	Marburg disease							
	Lassa fever							
II	Acute poliomyelitis							
	Tuberculosis	76	61	76	95	1,015	386	6,827
	Diphtheria							
	Severe Acute Respiratory Syndrome(SARS)							
	Avian influenza H5N1							
※	Avian influenza H7N9							
III	Cholera							
	Shigellosis	1	2	1	1	8	2	30
	Enterohemorrhagic Escherichia coli infection	2	1	9	13	35	49	249
	Typhoid fever	1				8		13
	Paratyphoid fever				1	2	1	4
IV	Hepatitis E	2	3			12	2	44
	West Nile fever							
	Hepatitis A	3	1	1		14	4	281
	Echinococcosis							3
	Yellow fever							
	Psittacosis					2		6
	Omsk hemorrhagic fever							
	Relapsing fever							
	Kyasanur forest disease							
	Q fever							
	Rabies							
	Coccidioidomycosis						1	1
	Monkeypox							
	Severe Fever with Thrombocytopenia Syndrome							5
	Hemorrhagic fever with renal syndrome							
	Western equine encephalitis							
	Tick-borne encephalitis							
	Anthrax							
	Chikungunya fever	1	1			2		4
	Scrub typhus(Tsutsugamushi disease)					2		30
	Dengue fever	1		1	2	13	1	47
	Eastern equine encephalitis							
	Avian influenza (excluding H5N1 and H7N9)							
	Nipah virus infection							
	Japanese spotted fever							13
	Japanese encephalitis							
	Hantavirus pulmonary syndrome							
	Herpes B virus infection							
	Glanders							
	Brucellosis					2		4
	Venezuelan equine encephalitis							
	Hendra virus infection							
	Epidemic typhus							
Botulism							1	
Malaria		1		1	7	3	20	
Tularemia								
Lyme disease								
Lyssavirus infection(excluding rabies)								
Rift valley fever								
Melioidosis								
Legionellosis	1	3	1	1	27	7	269	
Leptospirosis			1		1		5	
Rocky mountain spotted fever								

Category	Diseases	Tokyo					Japan	
		13th	14th	15th	16th	Cum 2014	16th	Cum 2014
V	Amebiasis	4	5	8	5	62	12	305
	Viral hepatitis(excluding hepatitis A and E)	1			1	14	2	71
	Acute encephalitis(excluding JE and WNE)					15	3	163
	Cryptosporidiosis					4	1	8
	Creutzfeldt-Jakob disease		1			3	1	42
	Severe invasive streptococcal infections(TSLS)	1	1		1	15	4	81
	Acquired immunodeficiency syndrome (AIDS)	16	6	7	8	139	17	382
	Giardiasis		2	1		7		19
	Invasive <i>Haemophilus influenzae</i> disease			1	1	6	4	66
	Invasive meningococcal disease					3		15
	Invasive pneumococcal disease	5	9	6	4	69	23	584
	Congenital rubella syndrome					3		8
	Syphilis	10	6	9	8	119	20	393
	Tetanus					4	2	24
	Vancomycin-resistant <i>S. aureus</i> infection							
	Vancomycin-resistant Enterococcus infection					3		15
	Rubella	3	5	2	3	46	7	156
	Measles	11	2	10	3	59	18	300

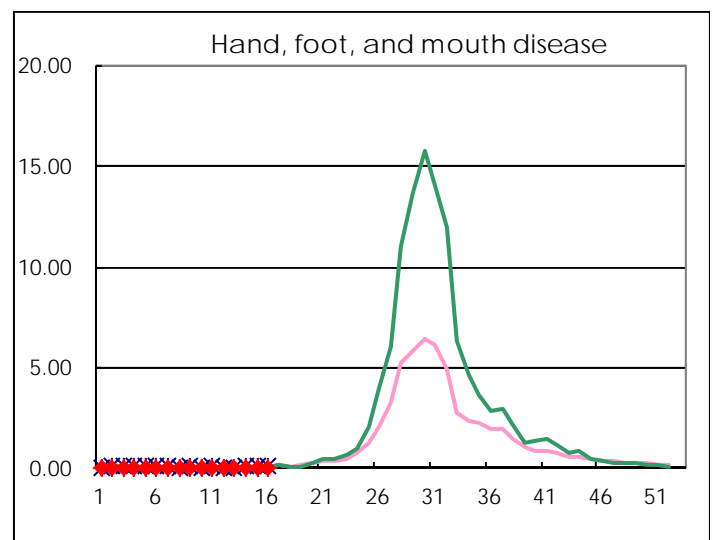
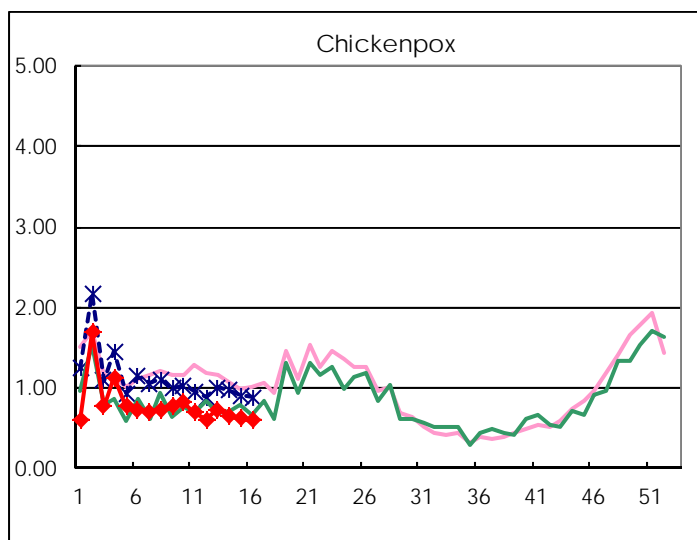
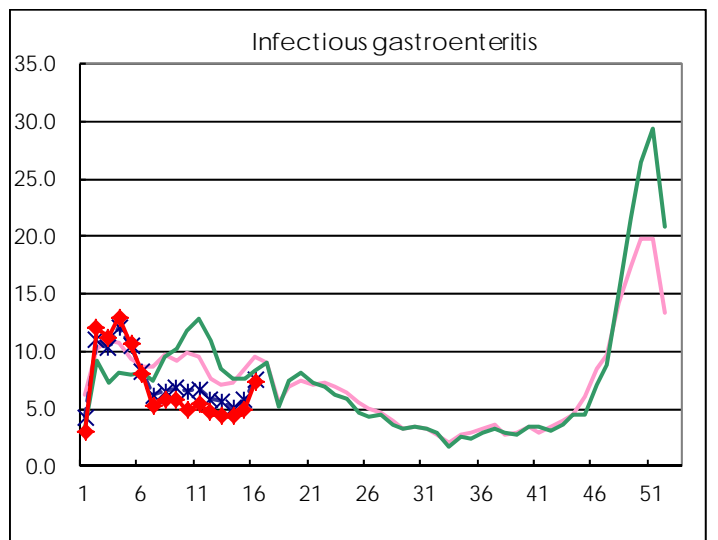
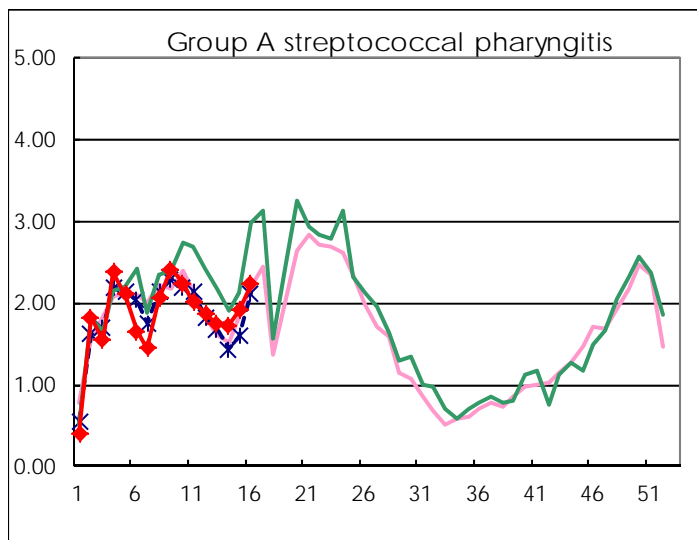
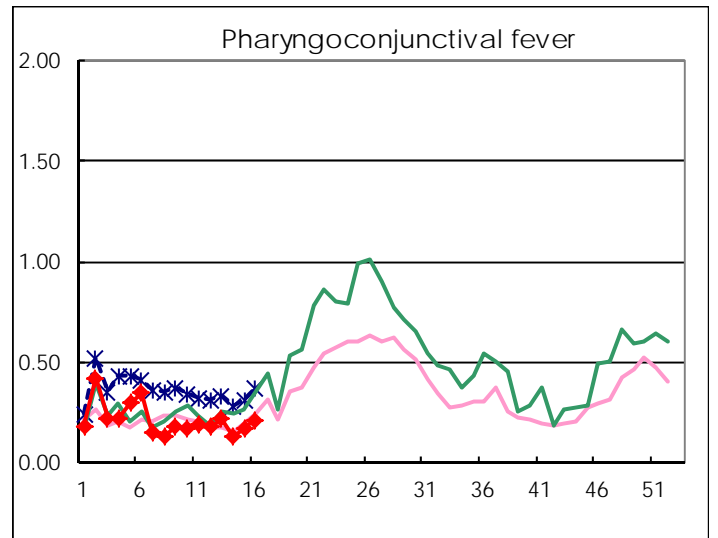
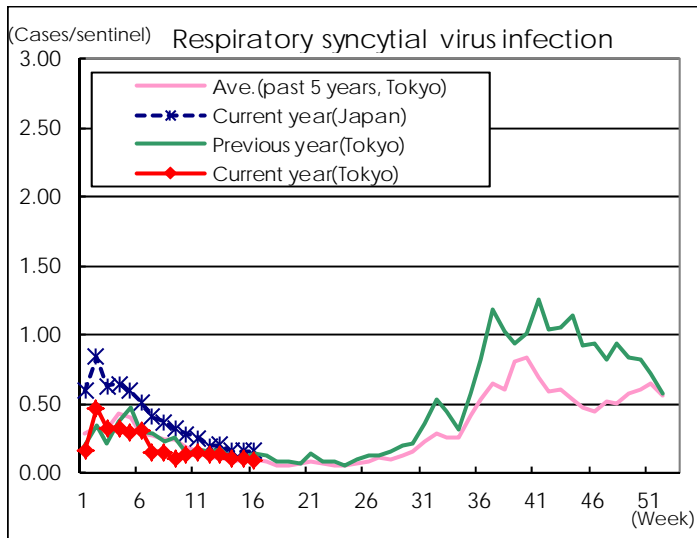
※ Designated infectious disease

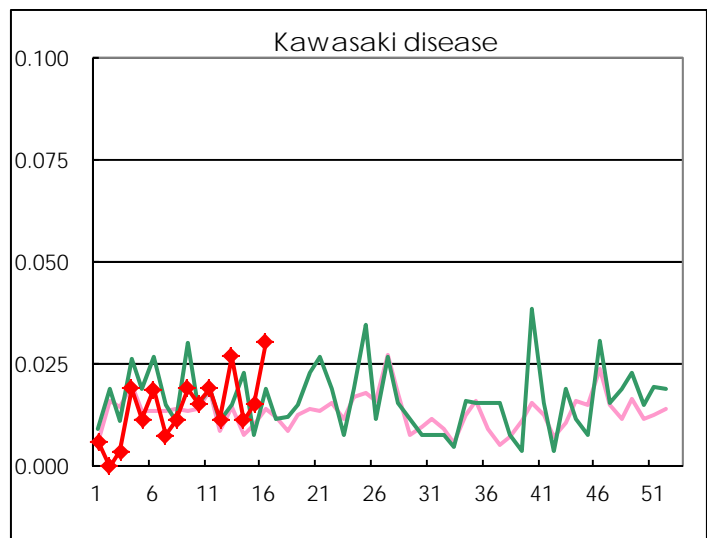
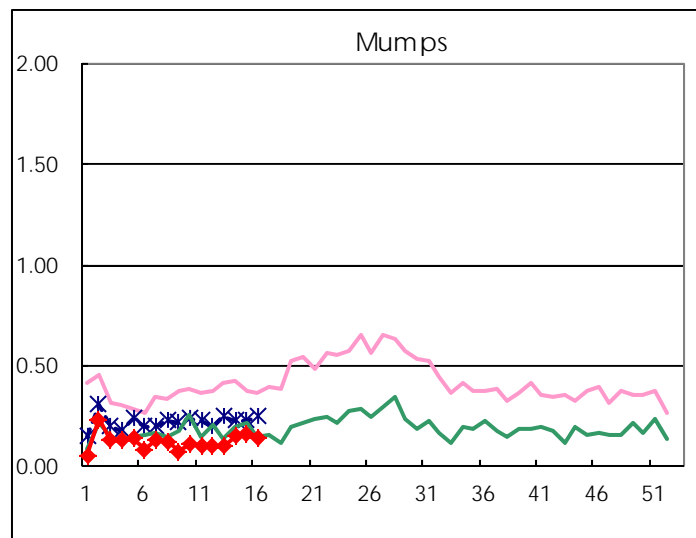
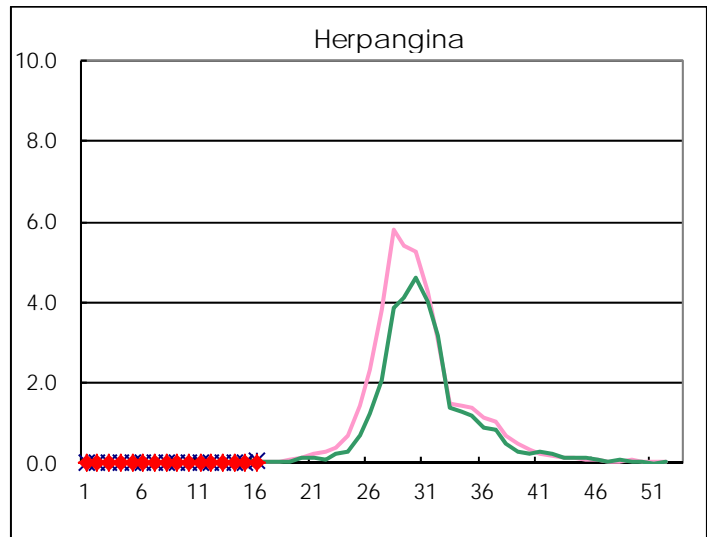
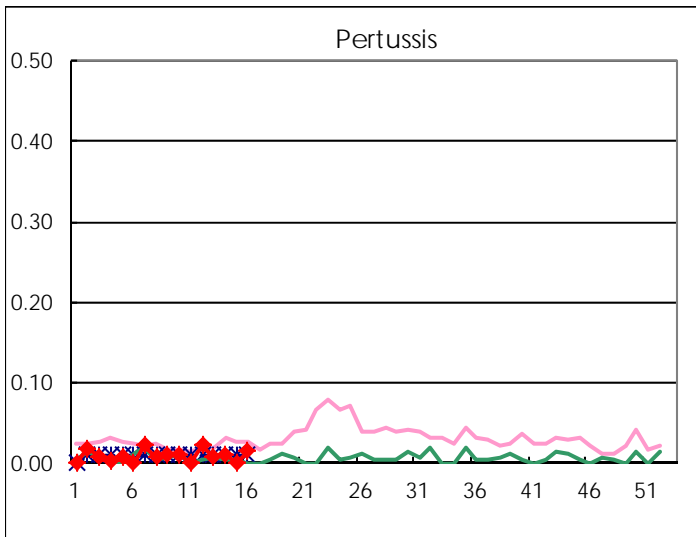
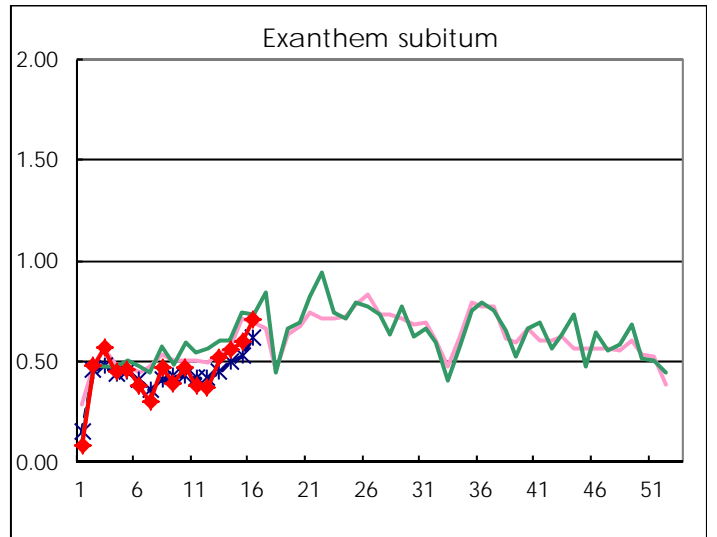
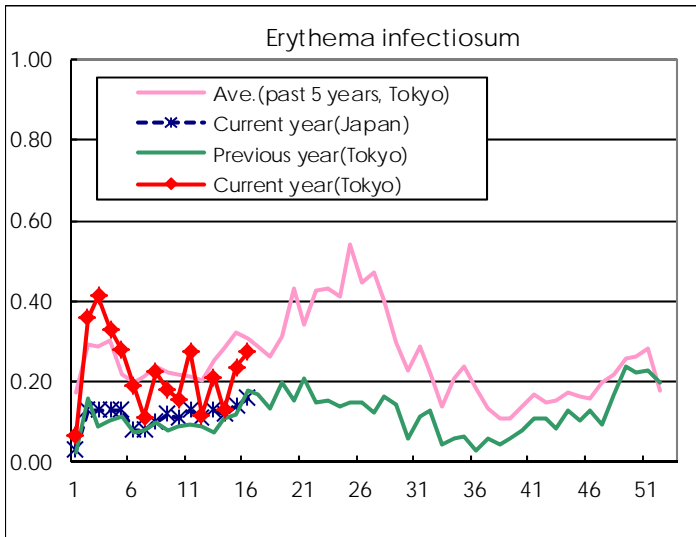
Number of patients with the diseases to be reported
by the designated clinics and hospitals

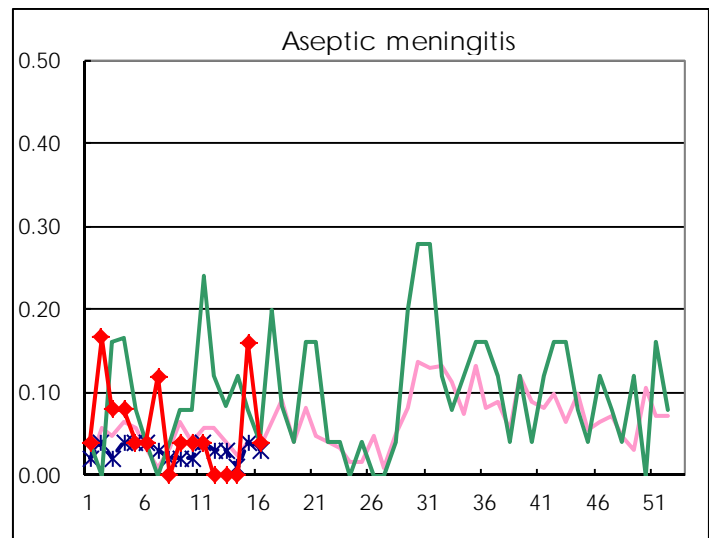
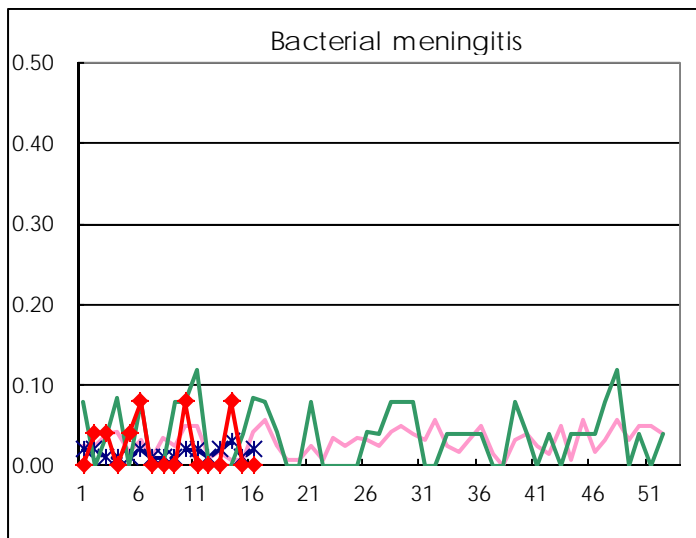
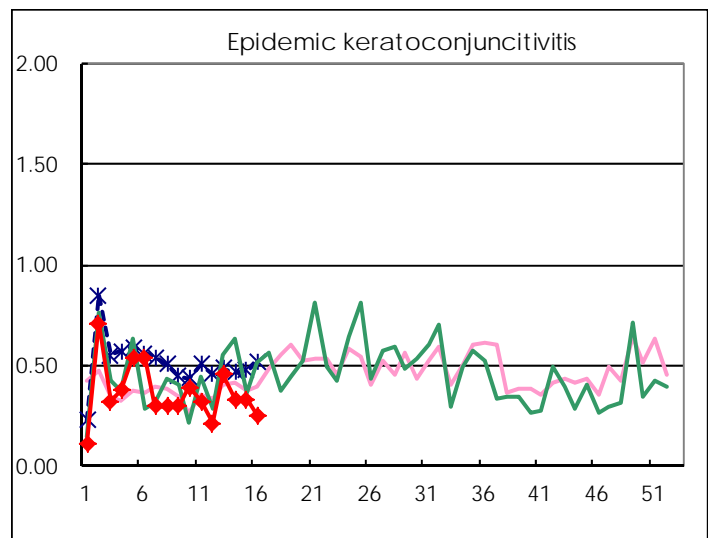
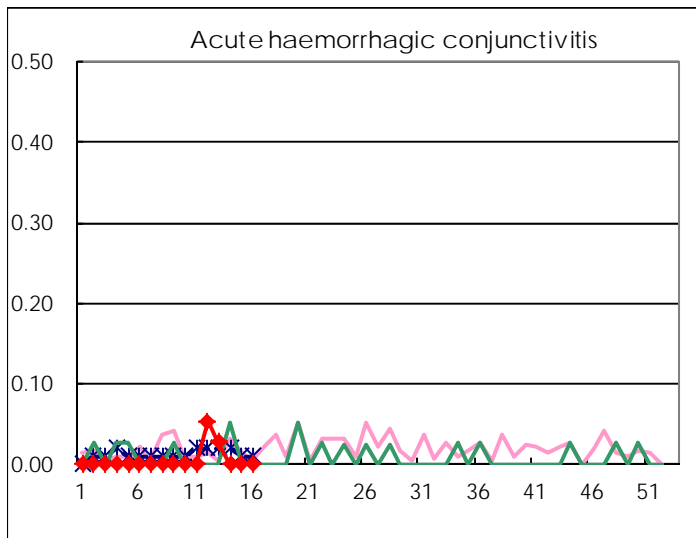
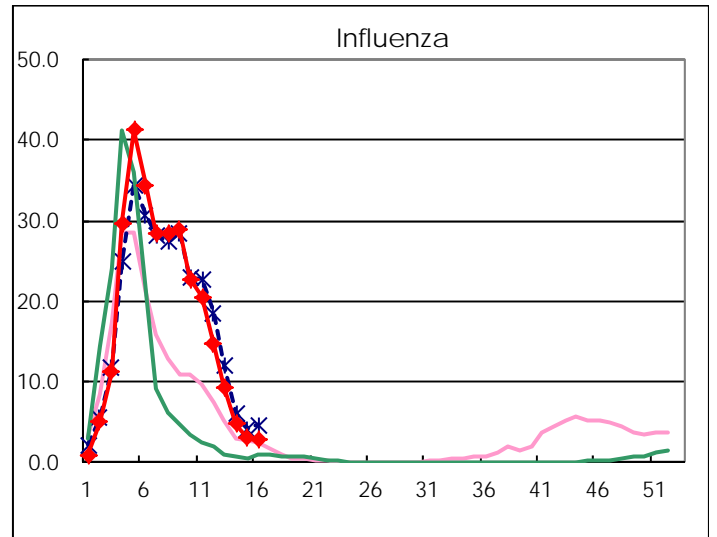
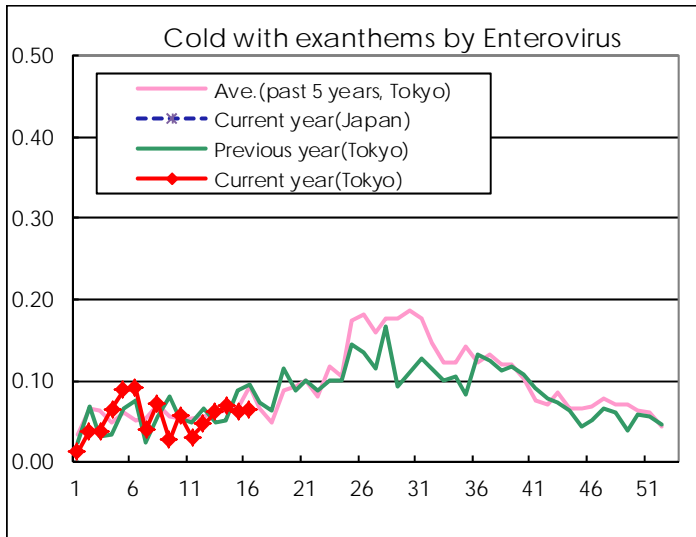
Diseases	Tokyo				
	13th	14th	15th	16th	/sentinel
Respiratory syncytial virus infection	35	26	27	23	0.09
Pharyngoconjunctival fever	56	33	45	56	0.21
Group A streptococcal pharyngitis	452	455	501	586	2.23
Infectious gastroenteritis	1,125	1,150	1,295	1,923	7.31
Chickenpox	191	169	164	158	0.60
Hand, foot, and mouth disease	8	12	20	7	0.03
Erythema infectiosum	55	34	62	72	0.27
Exanthem subitum	134	146	157	187	0.71
Pertussis	2	3		4	0.02
Herpangina	1	5	7	4	0.02
Mumps	26	40	42	38	0.14
Kawasaki disease	7	3	4	8	0.03
Cold with exanthems by Enterovirus	16	18	16	17	0.06
Influenza	3,880	2,001	1,265	1,181	2.83
Acute hemorrhagic conjunctivitis	1				
Epidemic keratoconjunctivitis	17	13	13	10	0.26
Bacterial meningitis		2			
Aseptic meningitis			4	1	0.04
Mycoplasma pneumonia	2	4	4	5	0.20
Chlamydial pneumonia (excluding psittacosis)					
Infectious gastroenteritis (only by Rotavirus)	5	13	4	12	0.48
Influenza-Associated Hospitalizations	26	18	8	7	0.28

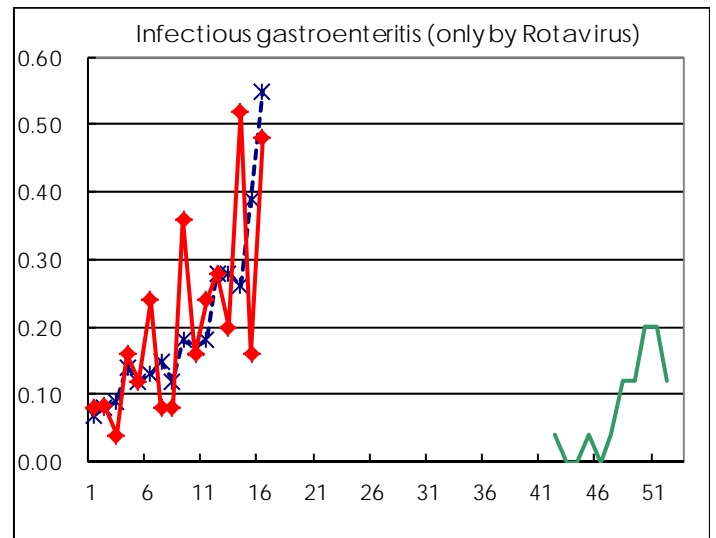
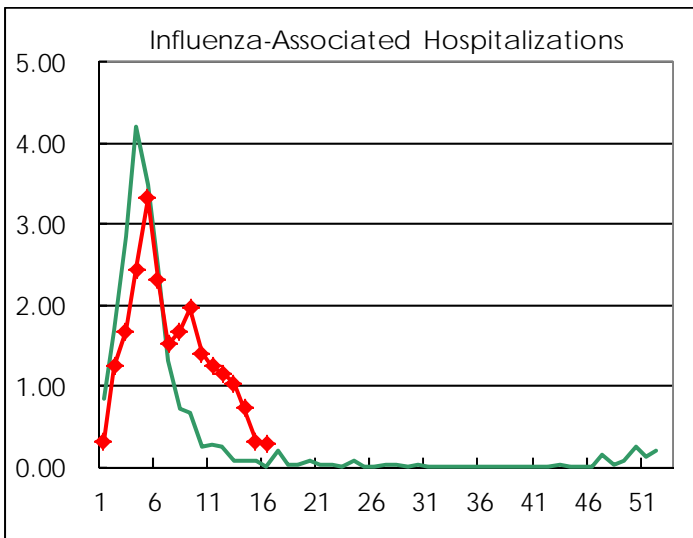
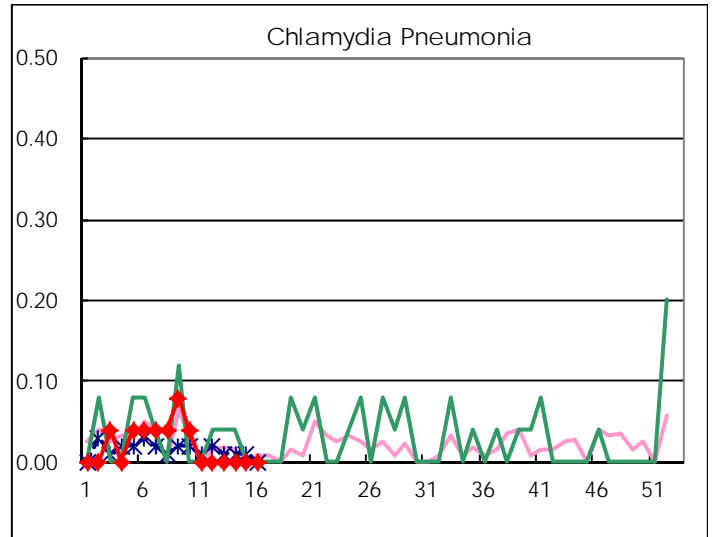
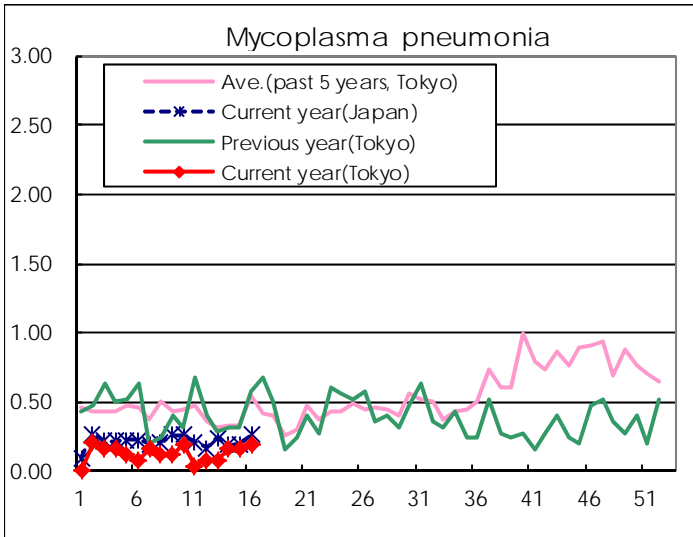
(Blank means 0.)

Disease Trend Graph (weekly reported cases per sentinel in comparison)









Number of sentinel facilities for weekly reporting		
Types of sentinels	Number of sentinels	Sentinels having reported
Pediatric	264	263
Influenza	419	417
Ophthalmic	39	39
Specially-designated	25	25

Tokyo Metropolitan Government
Infectious Disease Surveillance Center