
INFECTIOUS DISEASES WEEKLY REPORT

TOKYO iDWR

Tokyo Metropolitan Infectious Disease Surveillance Center

15 May 2014 / Number 19

Surveillance System in Tokyo, Japan

The infectious diseases which all physicians must report

All physicians must report to health centers the incidence of the diseases which are shown at page one. Health centers electronically report the individual cases to Tokyo Metropolitan Infectious Disease Surveillance Center.

The infectious diseases required to be reported by the sentinels

The numbers of patients who visit the sentinel clinics or hospitals during a week are reported to health centers in Tokyo. And they electronically report the numbers to Tokyo Metropolitan Infectious Disease Surveillance Center. We have about 500 sentinel clinics and hospitals in Tokyo.

1st Week is early January and 52nd Week is end of December.

Tokyo Metropolitan Institute of Public Health

TEL:81-3-3363-3213 FAX:81-3-5332-7365

e-mail:idsc@tokyo-eiken.go.jp

URL:idsc.tokyo-eiken.go.jp/

Number of patients with the diseases which all physicians must report

Category	Diseases	Tokyo					Japan	
		16th	17th	18th	19th	Cum 2014	19th	Cum 2014
I	Ebola hemorrhagic fever							
	Crimean-Congo hemorrhagic fever							
	Smallpox							
	South American hemorrhagic fever							
	Plague							
	Marburg disease							
	Lassa fever							
II	Acute poliomyelitis							
	Tuberculosis	97	88	66	43	1,237	203	8,095
	Diphtheria							
	Severe Acute Respiratory Syndrome(SARS)							
	Avian influenza H5N1							
※	Avian influenza H7N9							
III	Cholera							
	Shigellosis	1	1		1	10	1	34
	Enterohemorrhagic Escherichia coli infection	13	4			39	14	325
	Typhoid fever		1			9	1	16
	Paratyphoid fever	1				2	1	5
IV	Hepatitis E		1			13	2	52
	West Nile fever							
	Hepatitis A		2	1		17	6	311
	Echinococcosis							3
	Yellow fever							
	Psittacosis					2		6
	Omsk hemorrhagic fever							
	Relapsing fever							
	Kyasanur forest disease							
	Q fever							
	Rabies							
	Coccidioidomycosis							1
	Monkeypox							
	Severe Fever with Thrombocytopenia Syndrome							7
	Hemorrhagic fever with renal syndrome							
	Western equine encephalitis							
	Tick-borne encephalitis							
	Anthrax							
	Chikungunya fever					2		4
	Scrub typhus(Tsutsugamushi disease)		1			3	4	42
	Dengue fever	2		1	1	15	1	54
	Eastern equine encephalitis							
	Avian influenza (excluding H5N1 and H7N9)							
	Nipah virus infection							
	Japanese spotted fever						1	16
	Japanese encephalitis							
	Hantavirus pulmonary syndrome							
	Herpes B virus infection							
	Glanders							
	Brucellosis					2		4
	Venezuelan equine encephalitis							
	Hendra virus infection							
	Epidemic typhus							
Botulism							1	
Malaria	1	1	1	1	10	1	23	
Tularemia								
Lyme disease								
Lyssavirus infection(excluding rabies)								
Rift valley fever								
Melioidosis								
Legionellosis	2	1	4	4	37	10	316	
Leptospirosis					1		6	
Rocky mountain spotted fever								

Category	Diseases	Tokyo					Japan	
		16th	17th	18th	19th	Cum 2014	19th	Cum 2014
V	Amebiasis	5	5	3	2	72	11	364
	Viral hepatitis(excluding hepatitis A and E)	1	1	1	1	17	4	91
	Acute encephalitis(excluding JE and WNE)			1	1	17	1	183
	Cryptosporidiosis					4		9
	Creutzfeldt-Jakob disease					3	2	56
	Severe invasive streptococcal infections(TSLS)	1		1	3	19	3	95
	Acquired immunodeficiency syndrome (AIDS)	8	14	7	1	161	8	461
	Giardiasis					7	1	22
	Invasive <i>Haemophilus influenzae</i> disease	1	1		1	8		78
	Invasive meningococcal disease					3		16
	Invasive pneumococcal disease	4	3	8	6	86	44	753
	Congenital rubella syndrome					3		8
	Syphilis	8	17	8	5	150	5	471
	Tetanus			1		5	3	32
	Vancomycin-resistant <i>S. aureus</i> infection							
	Vancomycin-resistant <i>Enterococcus</i> infection					3		19
	Rubella	3	3	3	2	54	7	191
Measles	4		4		64	9	332	

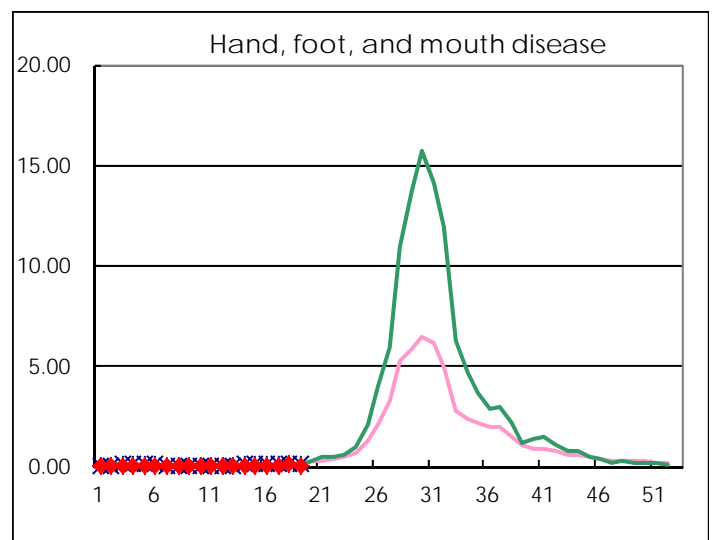
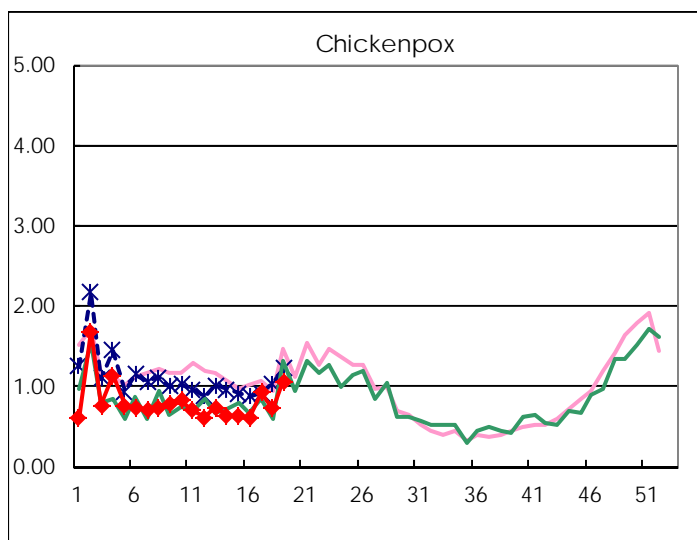
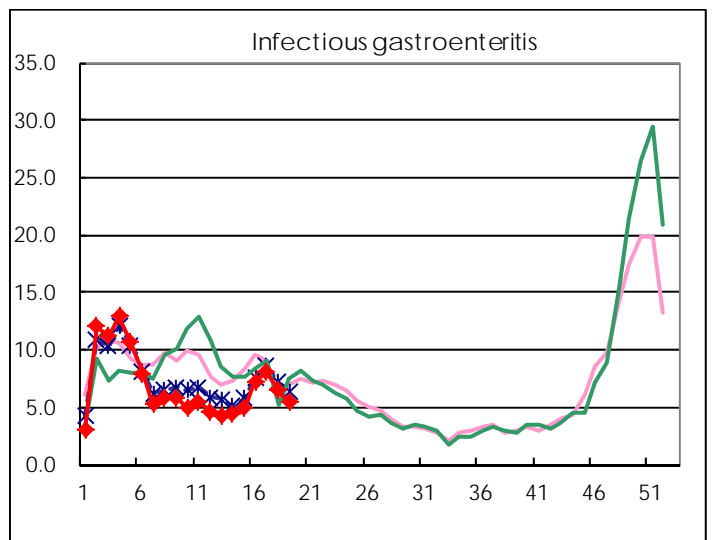
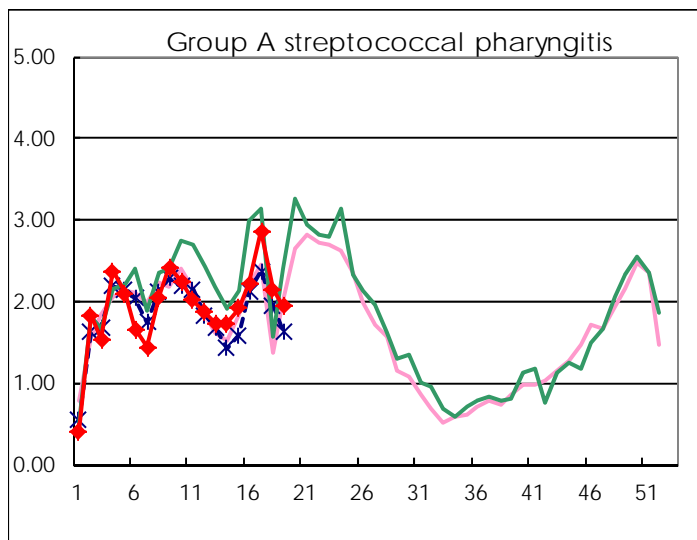
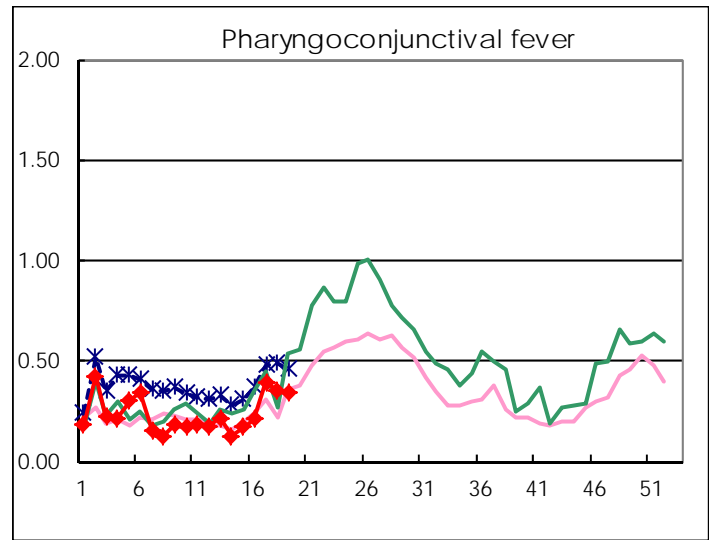
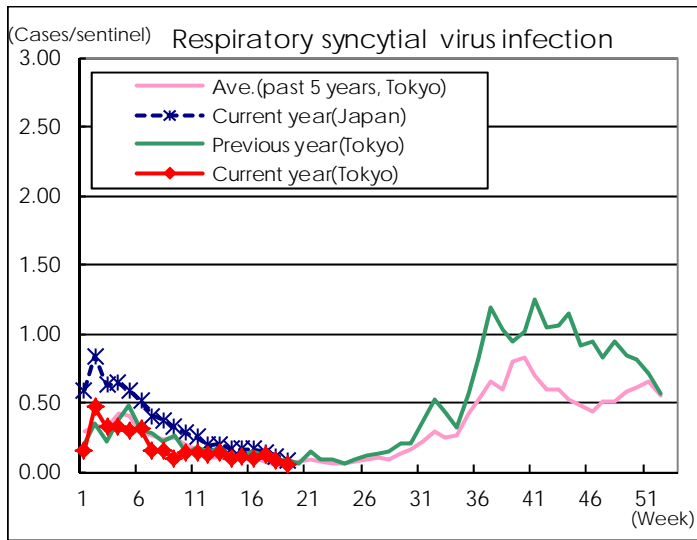
※ Designated infectious disease

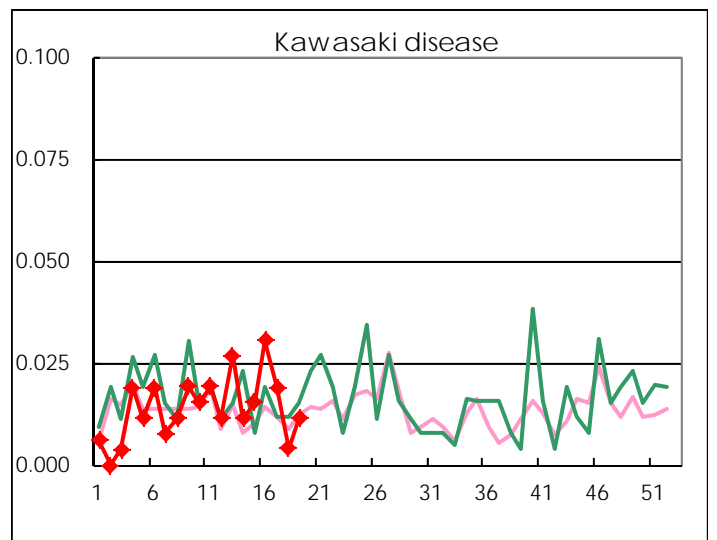
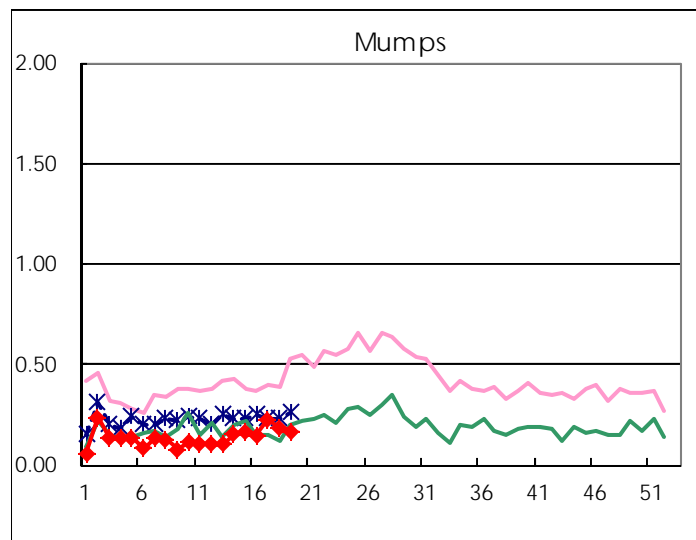
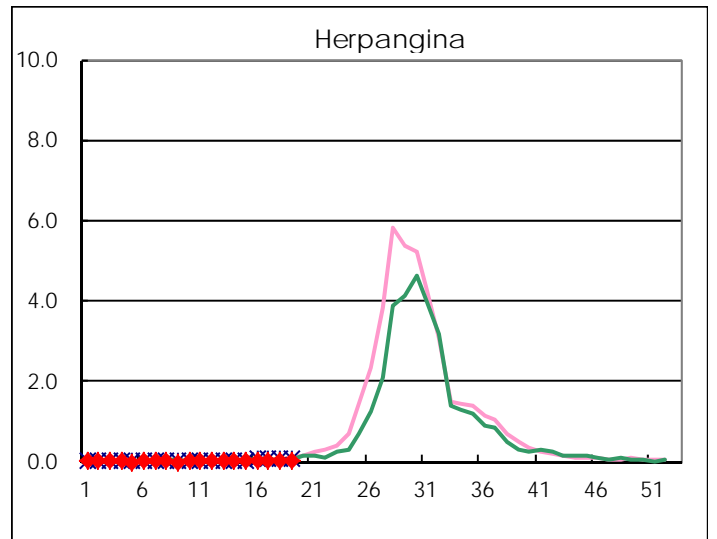
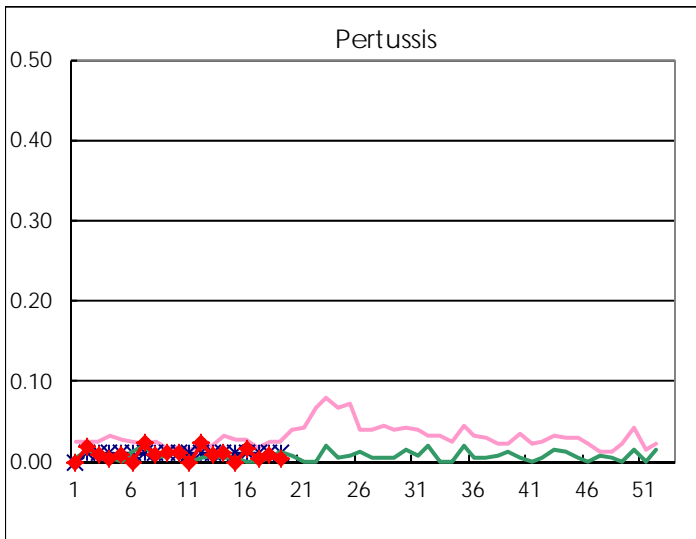
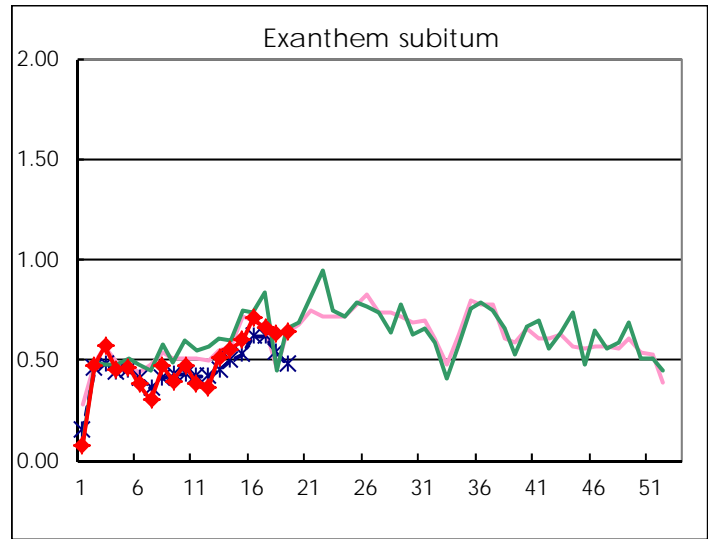
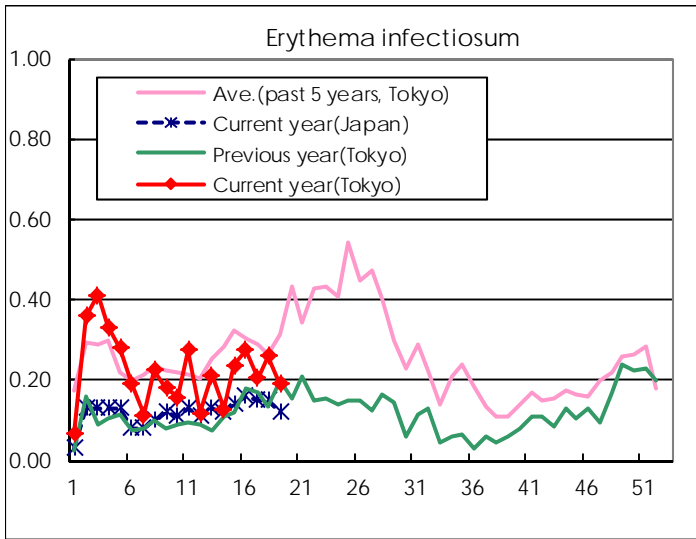
Number of patients with the diseases to be reported
by the designated clinics and hospitals

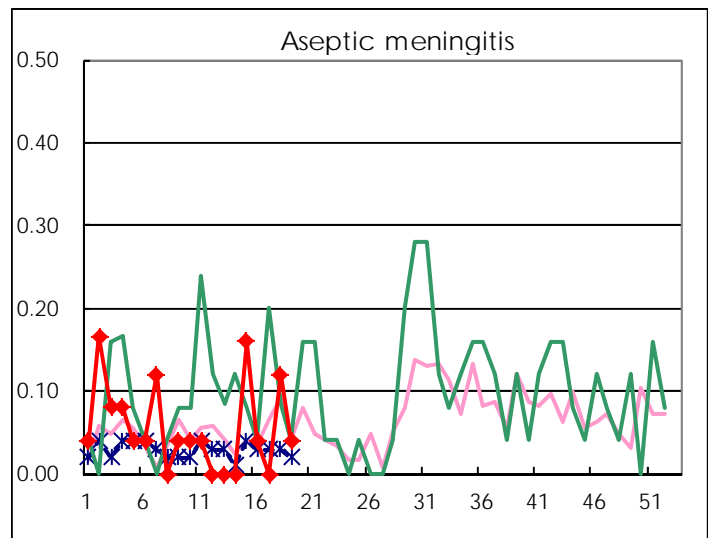
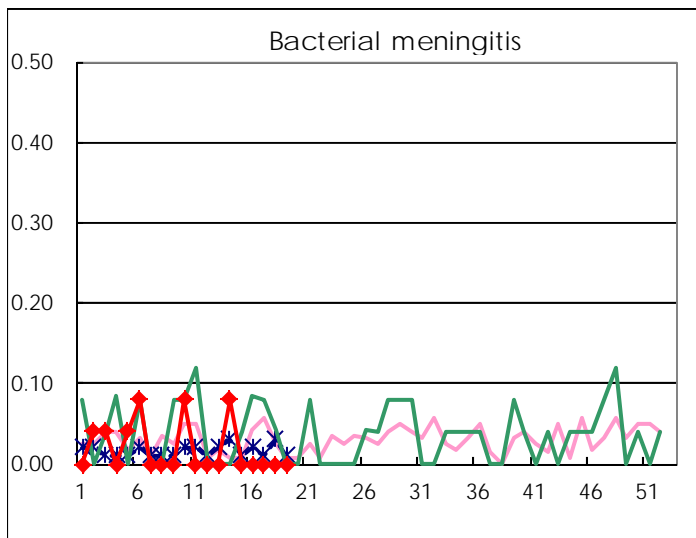
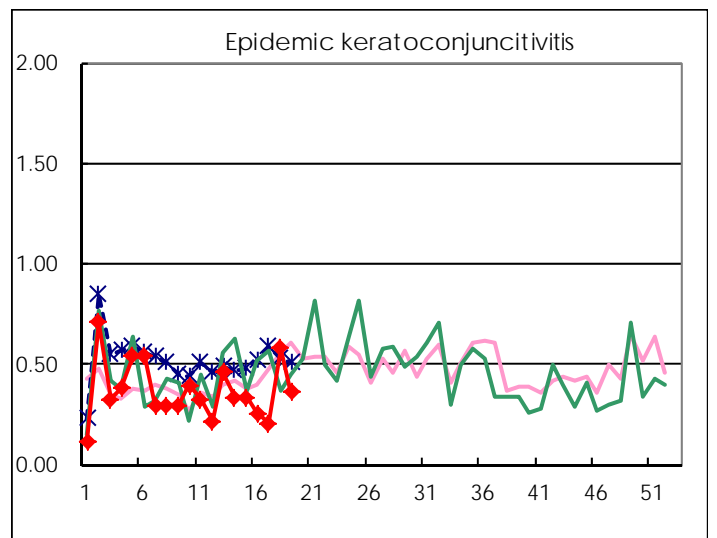
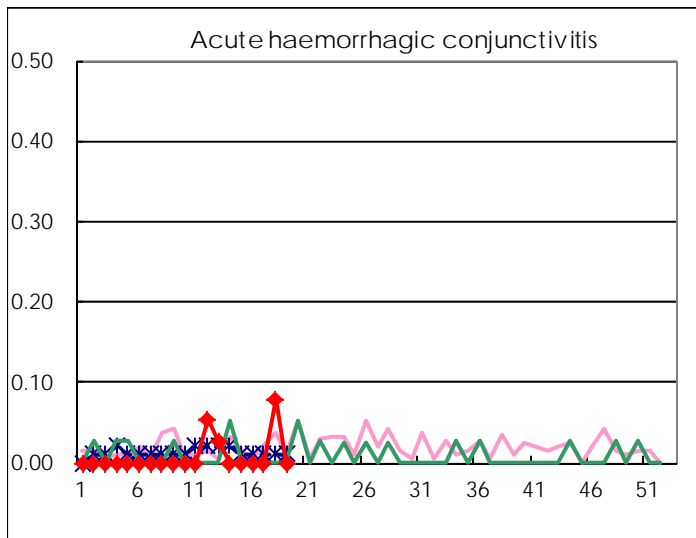
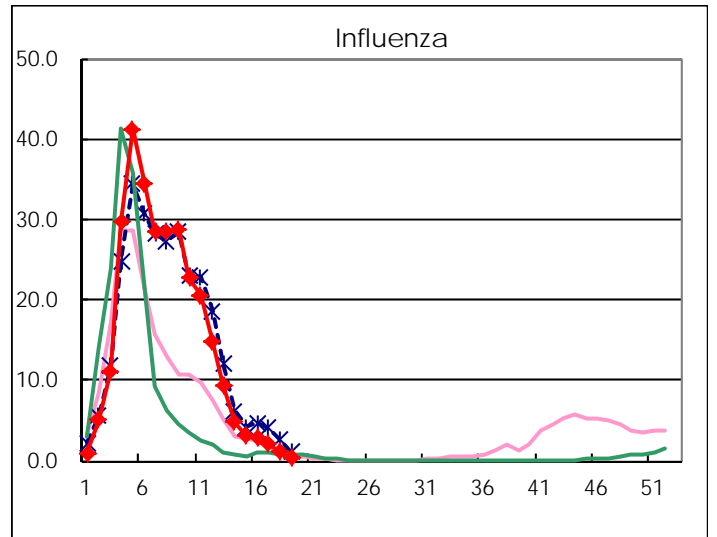
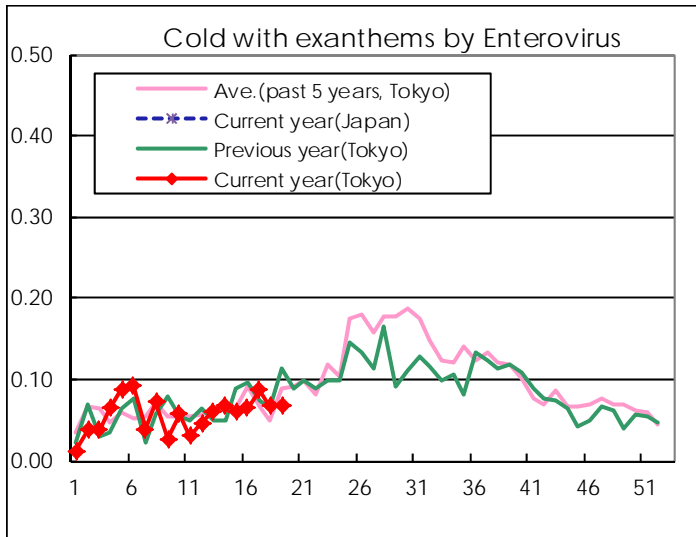
Diseases	Tokyo				
	16th	17th	18th	19th	/sentinel
Respiratory syncytial virus infection	23	33	20	14	0.05
Pharyngoconjunctival fever	56	105	88	89	0.34
Group A streptococcal pharyngitis	586	754	540	512	1.95
Infectious gastroenteritis	1,923	2,122	1,626	1,431	5.44
Chickenpox	158	245	182	280	1.06
Hand, foot, and mouth disease	7	19	27	25	0.10
Erythema infectiosum	72	54	65	50	0.19
Exanthem subitum	187	174	159	168	0.64
Pertussis	4	1	2	1	0.00
Herpangina	4	8	10	10	0.04
Mumps	38	60	45	42	0.16
Kawasaki disease	8	5	1	3	0.01
Cold with exanthems by Enterovirus	17	23	17	18	0.07
Influenza	1,189	851	422	138	0.33
Acute hemorrhagic conjunctivitis			3		
Epidemic keratoconjunctivitis	10	8	22	14	0.36
Bacterial meningitis					
Aseptic meningitis	1		3	1	0.04
Mycoplasma pneumonia	5	4	5	2	0.08
Chlamydial pneumonia (excluding psittacosis)			2		
Infectious gastroenteritis (only by Rotavirus)	12	9	7	4	0.16
Influenza-Associated Hospitalizations	7	9	3	2	0.08

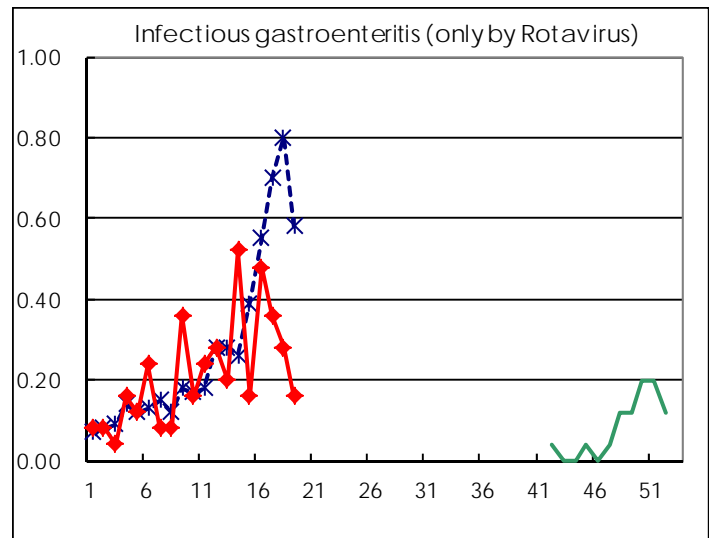
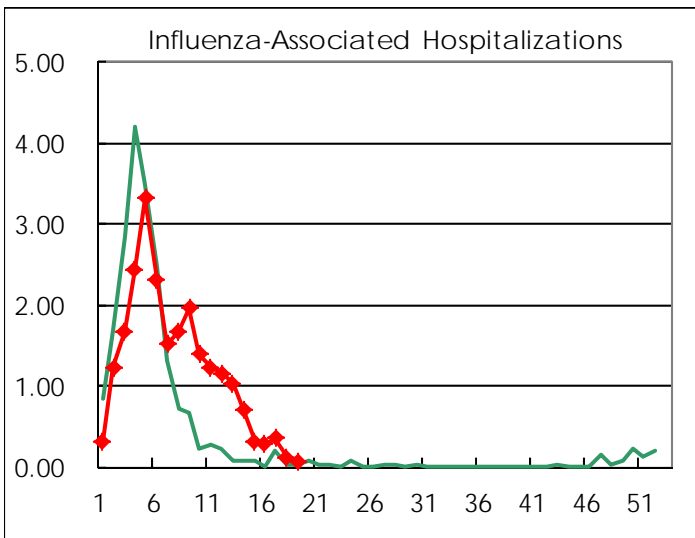
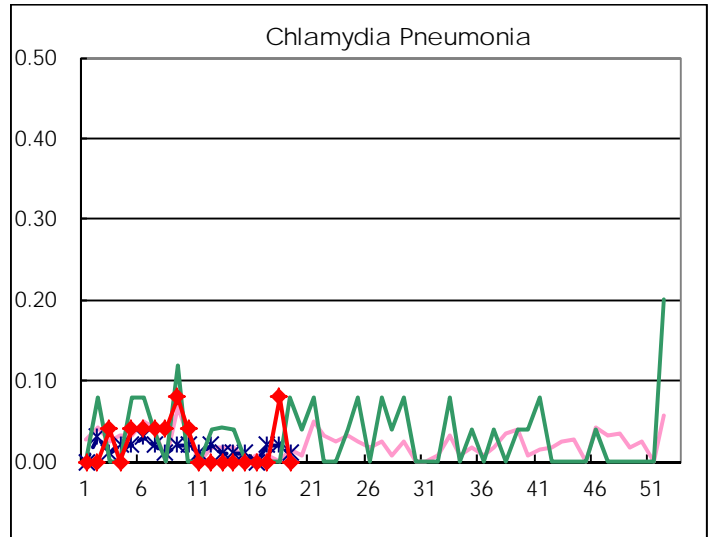
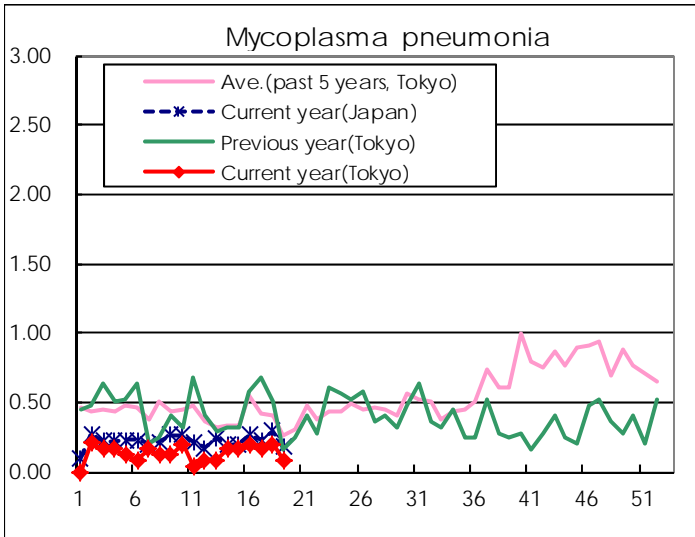
(Blank means 0.)

Disease Trend Graph (weekly reported cases per sentinel in comparison)









Number of sentinel facilities for weekly reporting		
Types of sentinels	Number of sentinels	Sentinels having reported
Pediatric	264	263
Influenza	419	415
Ophthalmic	39	39
Specially-designated	25	25

Tokyo Metropolitan Government
Infectious Disease Surveillance Center