

---

INFECTIOUS DISEASES WEEKLY REPORT

# TOKYO iDWR

Tokyo Metropolitan Infectious Disease Surveillance Center

## 5 June 2014 / Number 22

### Surveillance System in Tokyo, Japan

The infectious diseases which all physicians must report

All physicians must report to health centers the incidence of the diseases which are shown at page one. Health centers electronically report the individual cases to Tokyo Metropolitan Infectious Disease Surveillance Center.

The infectious diseases required to be reported by the sentinels

The numbers of patients who visit the sentinel clinics or hospitals during a week are reported to health centers in Tokyo. And they electronically report the numbers to Tokyo Metropolitan Infectious Disease Surveillance Center. We have about 500 sentinel clinics and hospitals in Tokyo.

1st Week is early January and 52nd Week is end of December.

Tokyo Metropolitan Institute of Public Health

TEL:81-3-3363-3213 FAX:81-3-5332-7365

e-mail:[idsc@tokyo-eiken.go.jp](mailto:idsc@tokyo-eiken.go.jp)

URL:[idsc.tokyo-eiken.go.jp/](http://idsc.tokyo-eiken.go.jp/)

---

## Number of patients with the diseases which all physicians must report

Category	Diseases	Tokyo					Japan	
		19th	20th	21st	22nd	Cum 2014	22nd	Cum 2014
I	Ebola hemorrhagic fever							
	Crimean-Congo hemorrhagic fever							
	Smallpox							
	South American hemorrhagic fever							
	Plague							
	Marburg disease							
	Lassa fever							
II	Acute poliomyelitis							
	Tuberculosis	47	81	85	91	1,503	441	9,780
	Diphtheria							
	Severe Acute Respiratory Syndrome(SARS)							
	Avian influenza H5N1							
※	Avian influenza H7N9							
III	Cholera							
	Shigellosis	1	5			15	2	44
	Enterohemorrhagic Escherichia coli infection		1	7	5	52	32	433
	Typhoid fever					9	2	19
	Paratyphoid fever			1		3		6
IV	Hepatitis E			1		14	1	59
	West Nile fever							
	Hepatitis A		6	1		24	1	342
	Echinococcosis							4
	Yellow fever							
	Psittacosis					2		6
	Omsk hemorrhagic fever							
	Relapsing fever							
	Kyasanur forest disease							
	Q fever							1
	Rabies							
	Coccidioidomycosis							1
	Monkeypox							
	Severe Fever with Thrombocytopenia Syndrome						2	13
	Hemorrhagic fever with renal syndrome							
	Western equine encephalitis							
	Tick-borne encephalitis							
	Anthrax							
	Chikungunya fever					2		4
	Scrub typhus(Tsutsugamushi disease)			1		4	7	66
	Dengue fever	2	2		3	21	3	68
	Eastern equine encephalitis							
	Avian influenza (excluding H5N1 and H7N9)							
	Nipah virus infection							
	Japanese spotted fever						5	34
	Japanese encephalitis							
	Hantavirus pulmonary syndrome							
	Herpes B virus infection							
	Glanders							
	Brucellosis					2		4
	Venezuelan equine encephalitis							
	Hendra virus infection							
	Epidemic typhus							
Botulism							1	
Malaria	1			1	11		25	
Tularemia								
Lyme disease								
Lyssavirus infection(excluding rabies)								
Rift valley fever								
Melioidosis								
Legionellosis	4		1		38	20	379	
Leptospirosis					1		6	
Rocky mountain spotted fever								

Category	Diseases	Tokyo					Japan	
		19th	20th	21st	22nd	Cum 2014	22nd	Cum 2014
V	Amebiasis	2	4	6	3	85	15	438
	Viral hepatitis(excluding hepatitis A and E)	1		2		19		102
	Acute encephalitis(excluding JE and WNE)	1				17	4	213
	Cryptosporidiosis					4		9
	Creutzfeldt-Jakob disease					3		64
	Severe invasive streptococcal infections(TSLS)	3	1	1	2	23	5	107
	Acquired immunodeficiency syndrome (AIDS)	1	5	11	12	189	18	563
	Giardiasis					7	2	28
	Invasive <i>Haemophilus influenzae</i> disease	1	1	2	2	13	3	92
	Invasive meningococcal disease					3		16
	Invasive pneumococcal disease	6	9	12	6	113	28	932
	Congenital rubella syndrome					3		8
	Syphilis	5	7	15	14	186	21	586
	Tetanus					5	2	40
	Vancomycin-resistant <i>S. aureus</i> infection							
	Vancomycin-resistant Enterococcus infection					3	2	22
	Rubella	2	1	2	1	58	4	207
	Measles	1	1	4	2	73	5	352

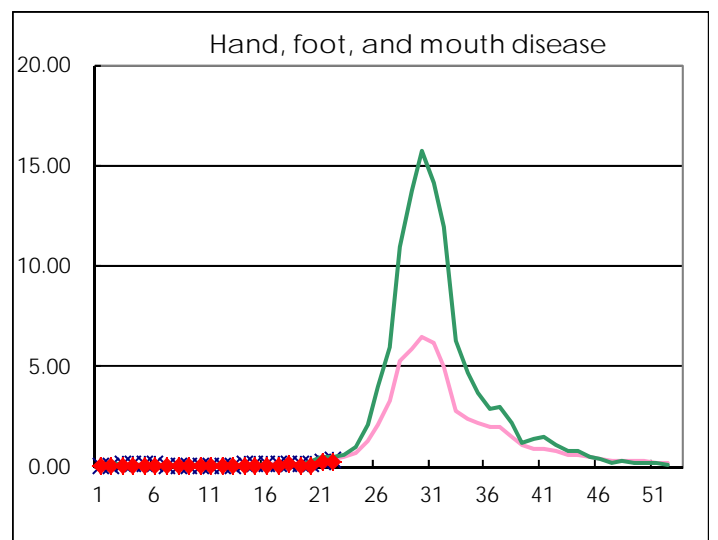
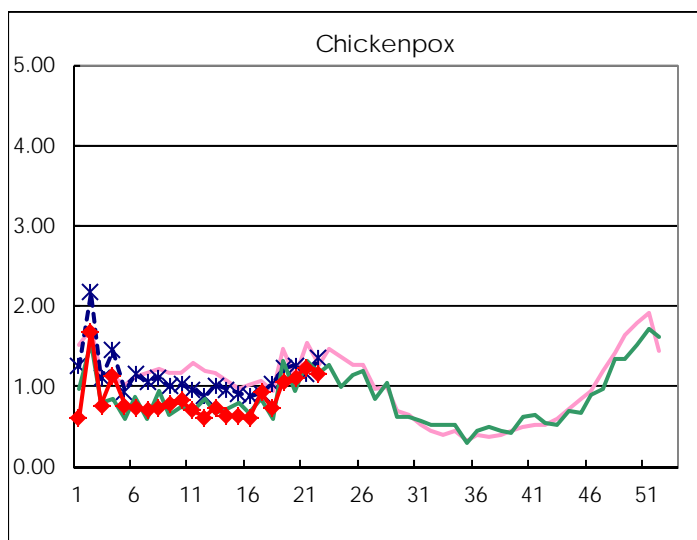
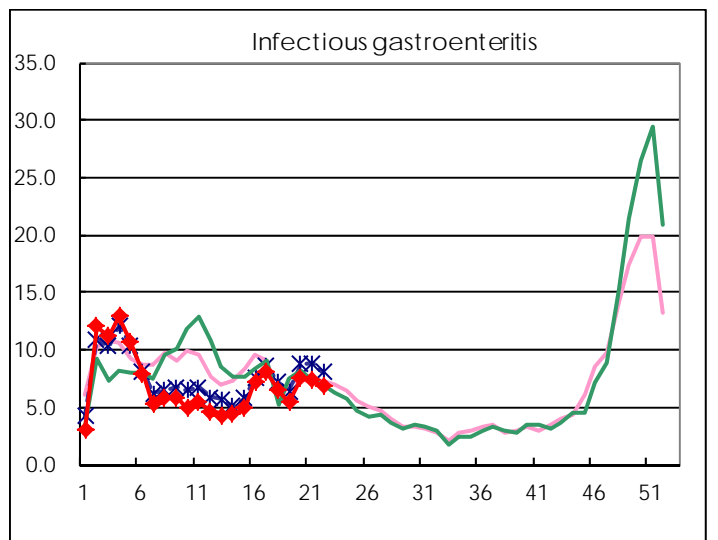
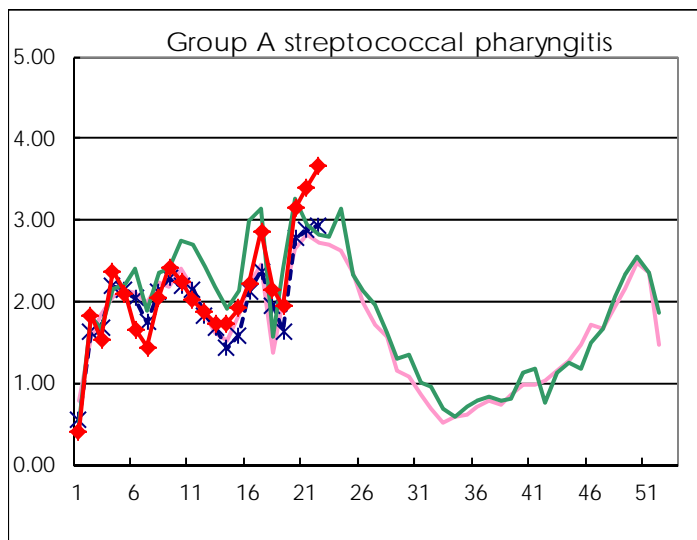
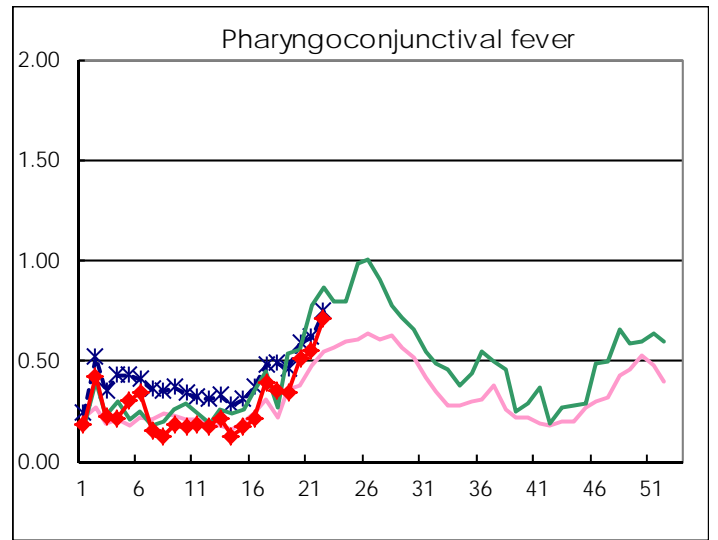
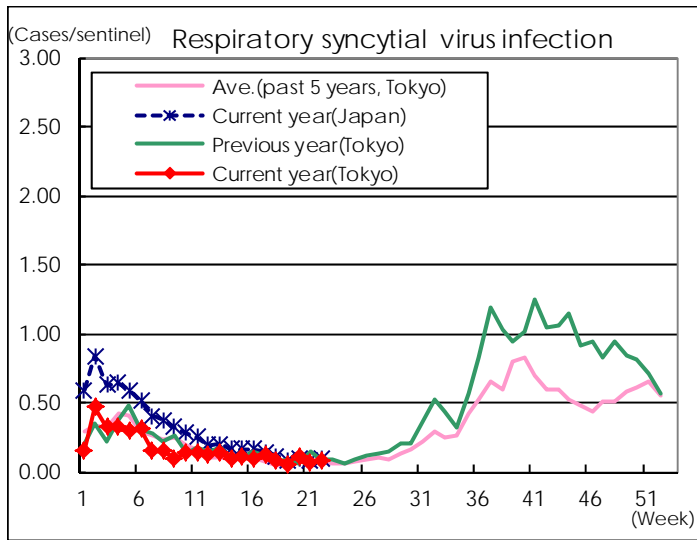
※ Designated infectious disease

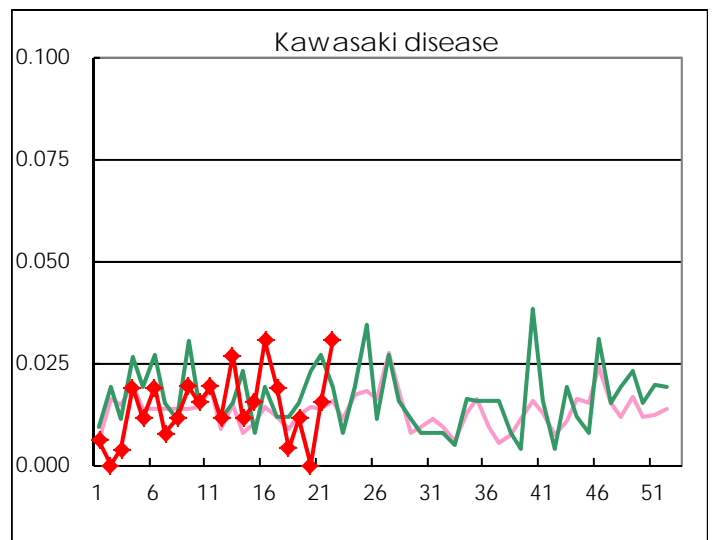
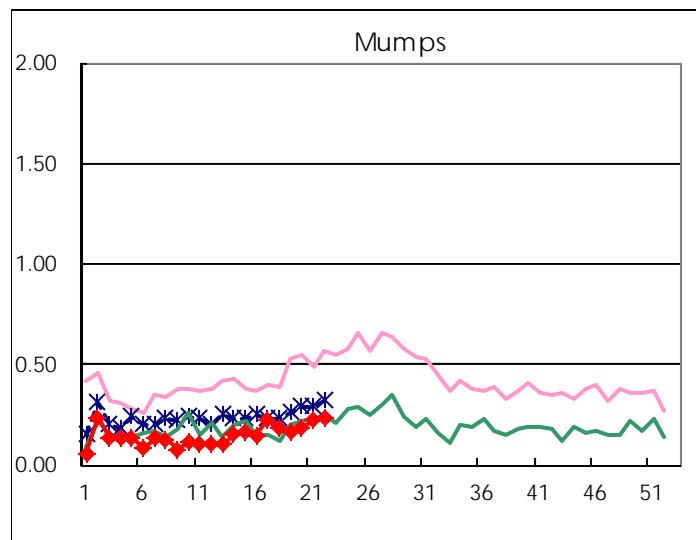
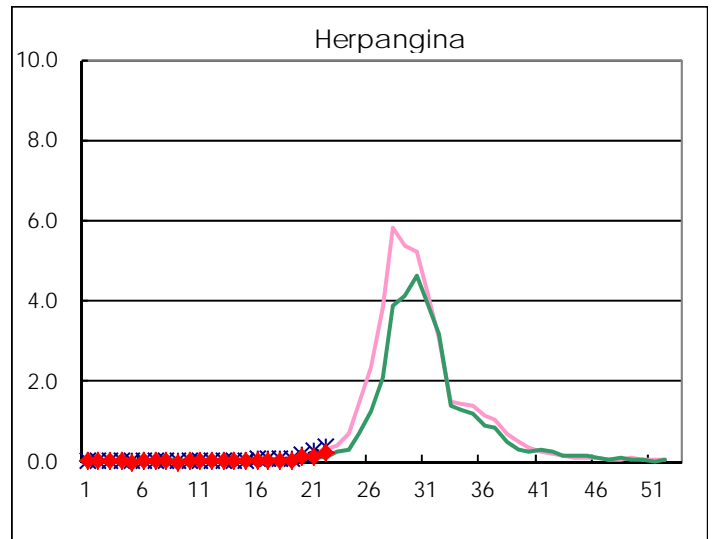
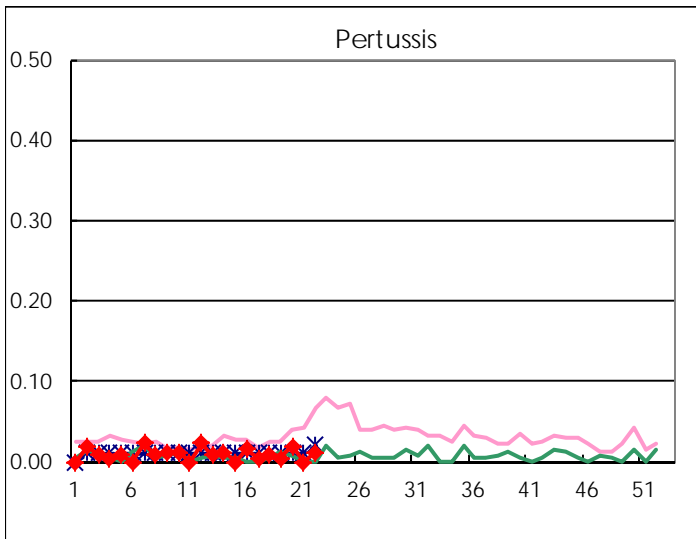
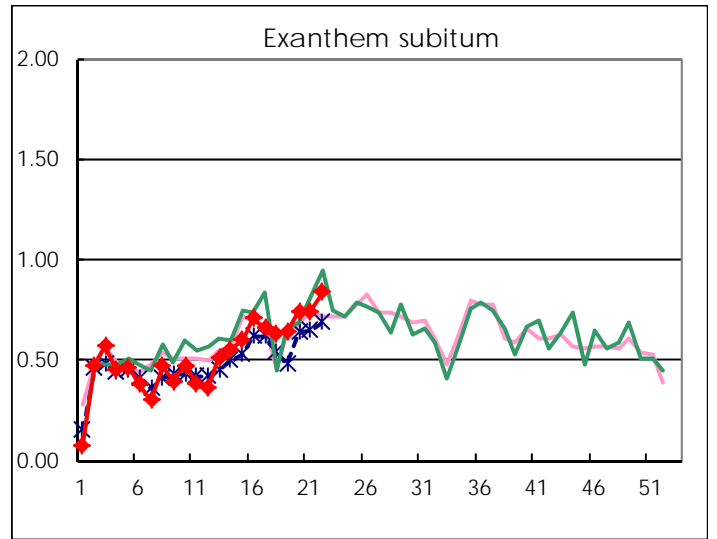
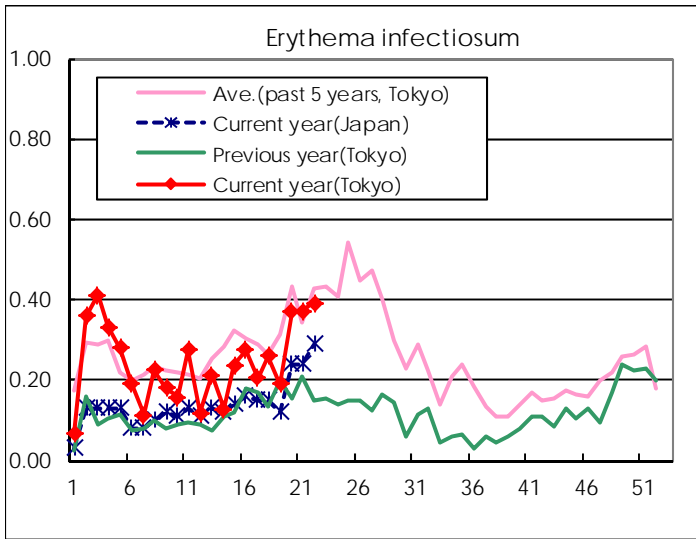
Number of patients with the diseases to be reported  
by the designated clinics and hospitals

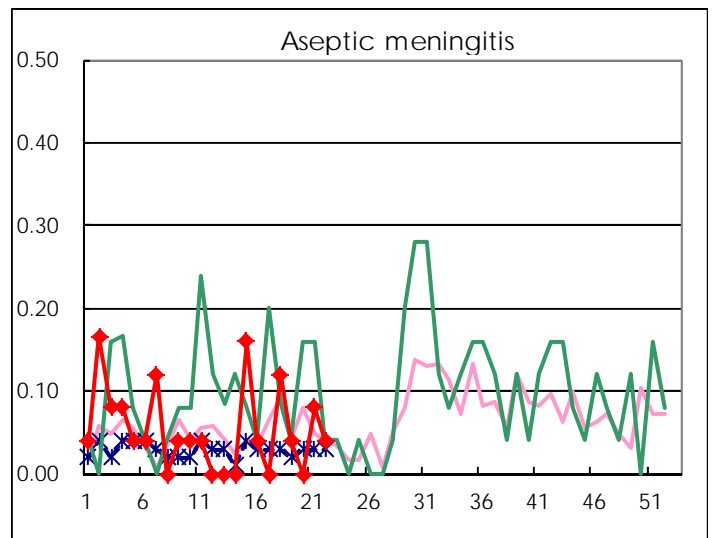
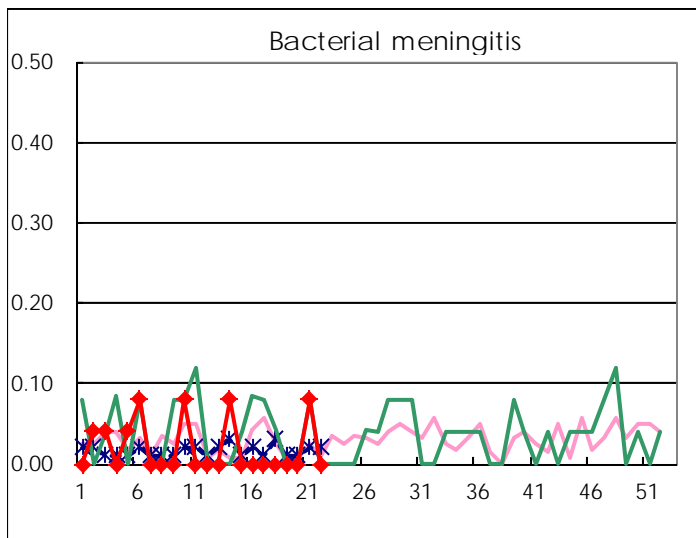
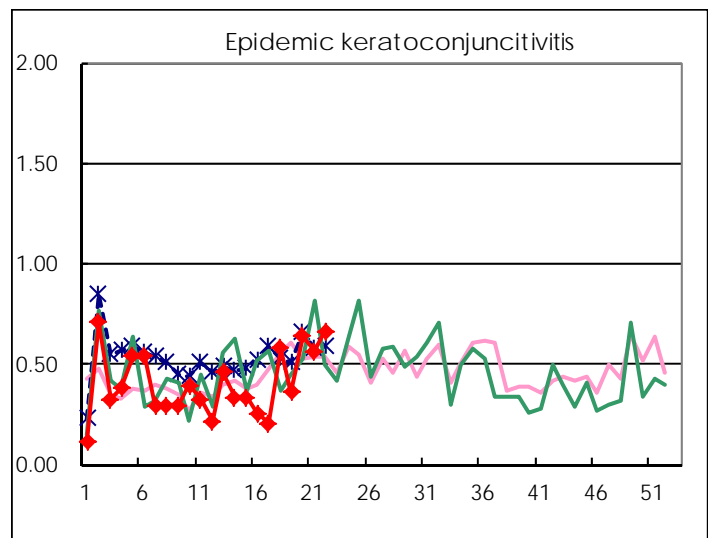
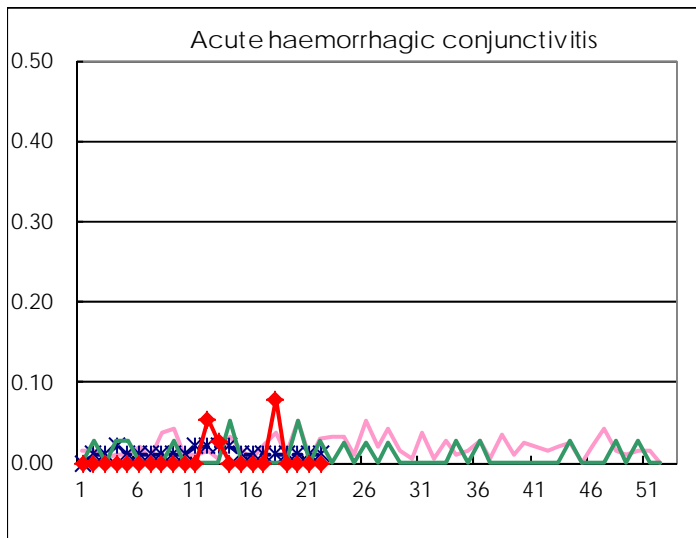
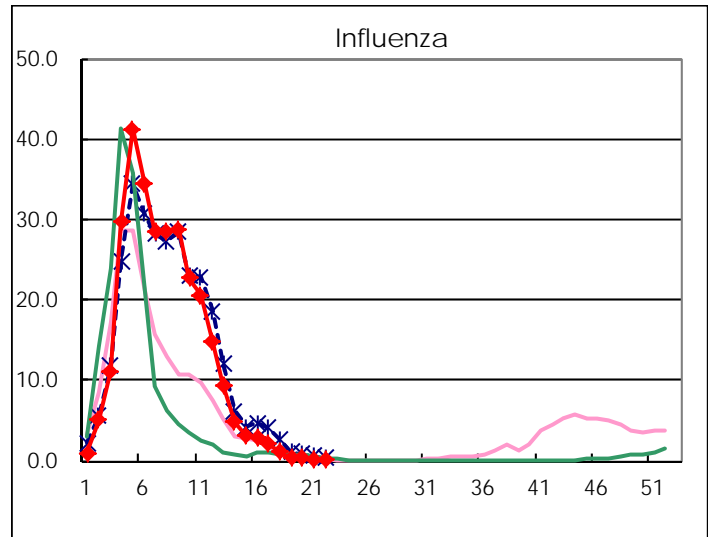
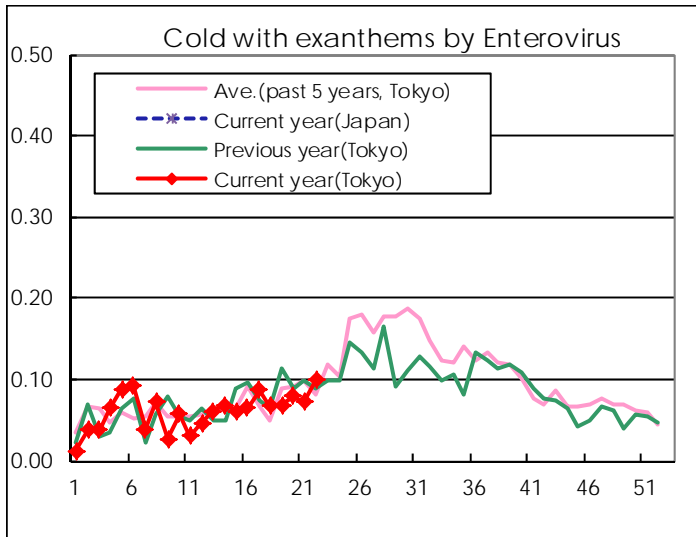
Diseases	Tokyo				
	19th	20th	21st	22nd	/sentinel
Respiratory syncytial virus infection	14	30	16	21	0.08
Pharyngoconjunctival fever	89	134	144	188	0.71
Group A streptococcal pharyngitis	512	828	893	961	3.65
Infectious gastroenteritis	1,431	1,989	1,933	1,801	6.85
Chickenpox	280	292	324	307	1.17
Hand, foot, and mouth disease	25	25	61	59	0.22
Erythema infectiosum	50	97	98	103	0.39
Exanthem subitum	168	196	195	221	0.84
Pertussis	1	5		3	0.01
Herpangina	10	27	29	54	0.21
Mumps	42	49	58	61	0.23
Kawasaki disease	3		4	8	0.03
Cold with exanthems by Enterovirus	18	21	19	26	0.10
Influenza	138	104	49	37	0.09
Acute hemorrhagic conjunctivitis					
Epidemic keratoconjunctivitis	14	25	22	26	0.67
Bacterial meningitis			2		
Aseptic meningitis	1		2	1	0.04
Mycoplasma pneumonia	2	3	3	2	0.08
Chlamydial pneumonia (excluding psittacosis)		2			
Infectious gastroenteritis (only by Rotavirus)	4	8	6	5	0.20
Influenza-Associated Hospitalizations	2	1		1	0.04

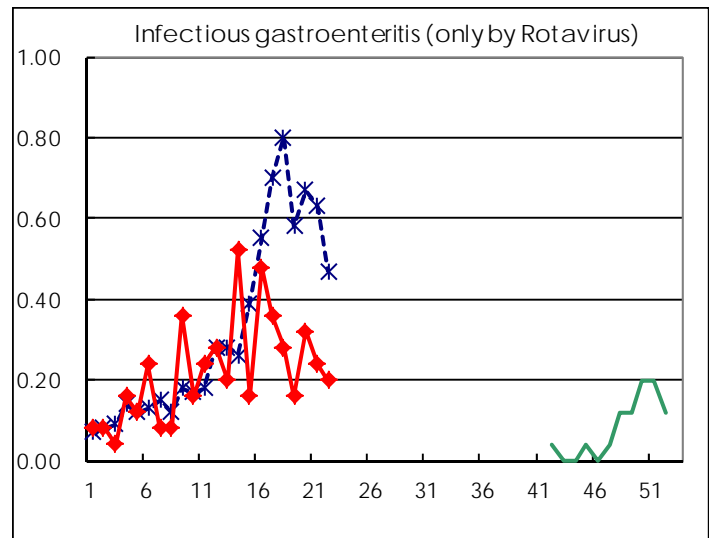
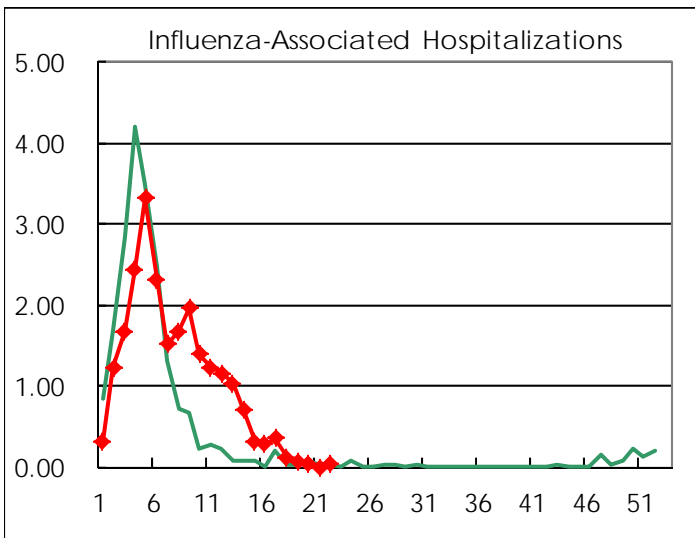
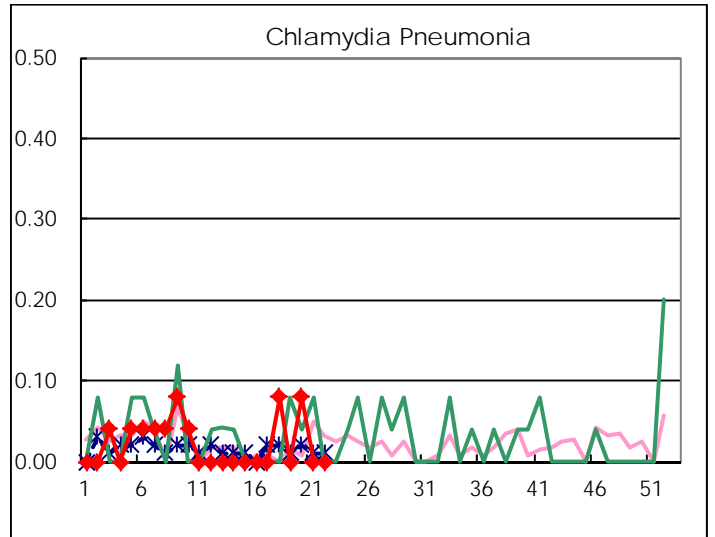
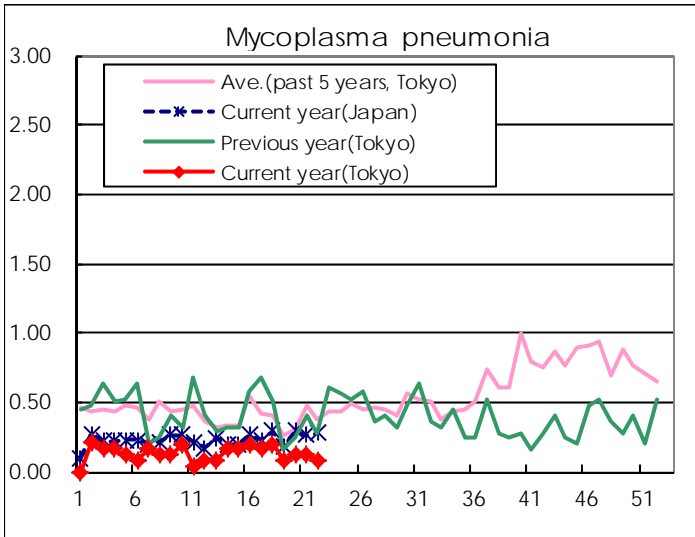
( Blank means 0. )

# Disease Trend Graph (weekly reported cases per sentinel in comparison)









Number of sentinel facilities for weekly reporting		
Types of sentinels	Number of sentinels	Sentinels having reported
Pediatric	264	263
Influenza	419	414
Ophthalmic	39	39
Specially-designated	25	25

Tokyo Metropolitan Government  
**Infectious Disease Surveillance Center**