

---

INFECTIOUS DISEASES WEEKLY REPORT

# TOKYO IDWR

Tokyo Metropolitan Infectious Disease Surveillance Center

## 26 June 2014 / Number 25

### Surveillance System in Tokyo, Japan

#### The infectious diseases which all physicians must report

All physicians must report to health centers the incidence of the diseases which are shown at page one. Health centers electronically report the individual cases to Tokyo Metropolitan Infectious Disease Surveillance Center.

#### The infectious diseases required to be reported by the sentinels

The numbers of patients who visit the sentinel clinics or hospitals during a week are reported to health centers in Tokyo. And they electronically report the numbers to Tokyo Metropolitan Infectious Disease Surveillance Center. We have about 500 sentinel clinics and hospitals in Tokyo.

1st Week is early January and 52nd Week is end of December.

Tokyo Metropolitan Institute of Public Health

TEL:81-3-3363-3213 FAX:81-3-5332-7365

e-mail:[idsc@tokyo-eiken.go.jp](mailto:idsc@tokyo-eiken.go.jp)

URL:[idsc.tokyo-eiken.go.jp/](http://idsc.tokyo-eiken.go.jp/)

---

## Number of patients with the diseases which all physicians must report

Category	Diseases	Tokyo					Japan	
		22nd	23rd	24th	25th	Cum 2014	25th	Cum 2014
I	Ebola hemorrhagic fever							
	Crimean-Congo hemorrhagic fever							
	Smallpox							
	South American hemorrhagic fever							
	Plague							
	Marburg disease							
	Lassa fever							
II	Acute poliomyelitis							
	Tuberculosis	96	89	89	81	1,775	405	11,526
	Diphtheria							
	Severe Acute Respiratory Syndrome(SARS)							
	Avian influenza H5N1							
※	Avian influenza H7N9							
III	Cholera							
	Shigellosis			1	1	17	3	49
	Enterohemorrhagic Escherichia coli infection	5	4	12	16	85	119	681
	Typhoid fever				1	10	1	21
	Paratyphoid fever					3	1	7
IV	Hepatitis E		2			16	1	70
	West Nile fever							
	Hepatitis A			2		26	3	365
	Echinococcosis							5
	Yellow fever							
	Psittacosis					2		6
	Omsk hemorrhagic fever							
	Relapsing fever							
	Kyasanur forest disease							
	Q fever							1
	Rabies							
	Coccidioidomycosis							1
	Monkeypox							
	Severe Fever with Thrombocytopenia Syndrome						4	23
	Hemorrhagic fever with renal syndrome							
	Western equine encephalitis							
	Tick-borne encephalitis							
	Anthrax							
	Chikungunya fever					2		5
	Scrub typhus(Tsutsugamushi disease)					4	5	91
	Dengue fever	3	1	1	3	26	7	78
	Eastern equine encephalitis							
	Avian influenza (excluding H5N1 and H7N9)							
	Nipah virus infection							
	Japanese spotted fever						1	48
	Japanese encephalitis							
	Hantavirus pulmonary syndrome							
	Herpes B virus infection							
	Glanders							
	Brucellosis					2		5
	Venezuelan equine encephalitis							
	Hendra virus infection							
	Epidemic typhus							
Botulism							1	
Malaria	1				11	1	27	
Tularemia								
Lyme disease							1	
Lyssavirus infection(excluding rabies)								
Rift valley fever								
Melioidosis								
Legionellosis		3	1	5	47	29	464	
Leptospirosis					1	1	7	
Rocky mountain spotted fever								

Category	Diseases	Tokyo				Japan		
		22nd	23rd	24th	25th	Cum 2014	25th	Cum 2014
V	Amebiasis	3	6	5	2	98	17	508
	Viral hepatitis(excluding hepatitis A and E)		1	1	3	24	1	120
	Acute encephalitis(excluding JE and WNE)			1	1	19	4	232
	Cryptosporidiosis					4		9
	Creutzfeldt-Jakob disease			1		4	1	77
	Severe invasive streptococcal infections(TSLS)	2	1		3	27	2	125
	Acquired immunodeficiency syndrome (AIDS)	12	11	14	12	226	19	661
	Giardiasis					7		32
	Invasive <i>Haemophilus influenzae</i> disease	2	1			14	2	101
	Invasive meningococcal disease				1	4		19
	Invasive pneumococcal disease	6	6	4	7	130	9	1,037
	Congenital rubella syndrome					3		8
	Syphilis	14	10	9	12	217	20	703
	Tetanus				1	6	3	51
	Vancomycin-resistant <i>S. aureus</i> infection							
	Vancomycin-resistant Enterococcus infection					3		24
	Rubella	1			2	60	3	224
Measles	2	1	4		79	14	391	

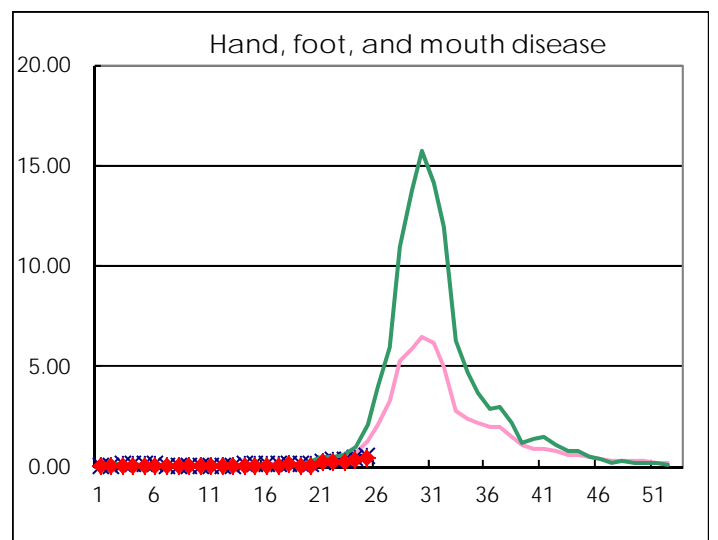
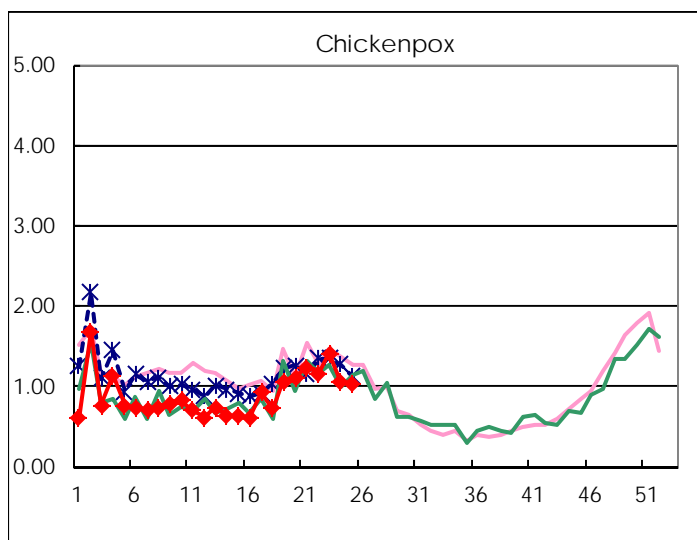
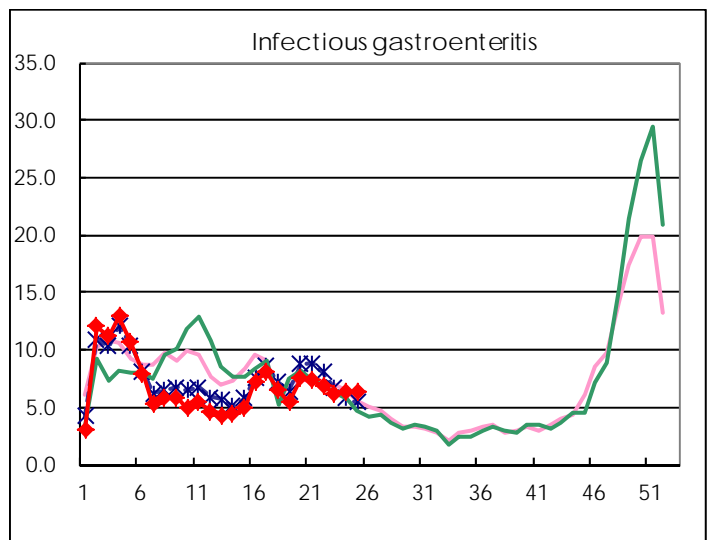
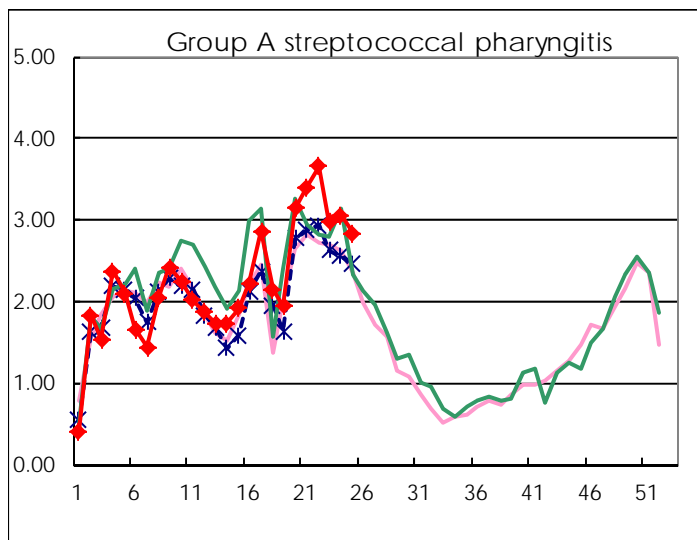
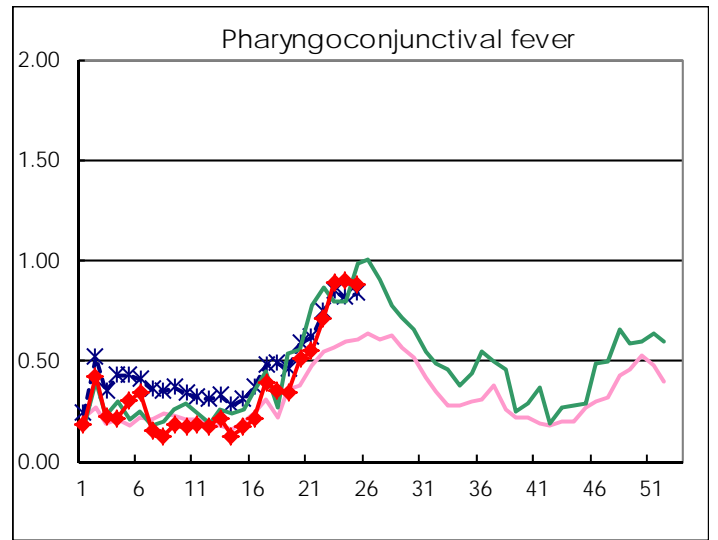
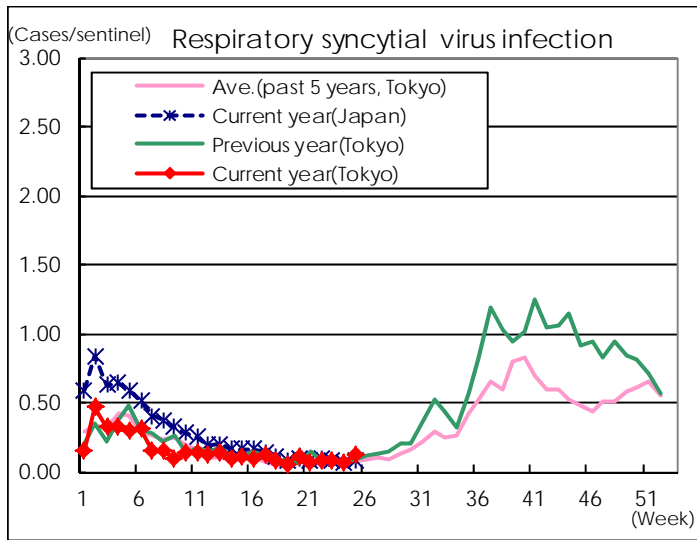
※ Designated infectious disease

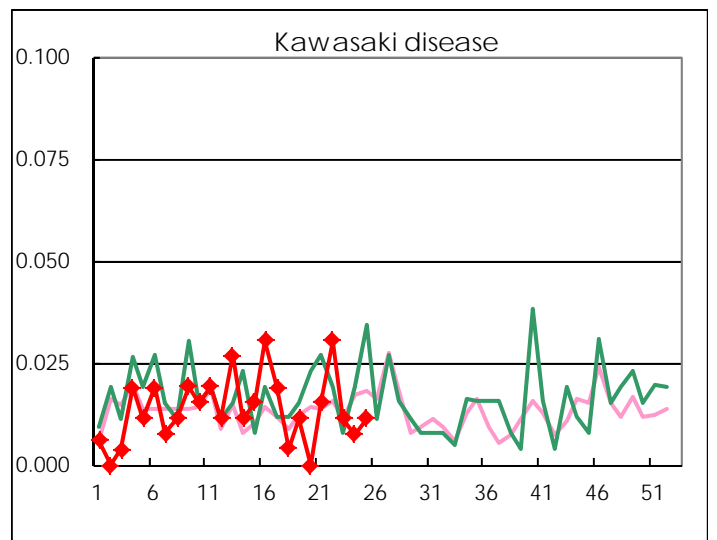
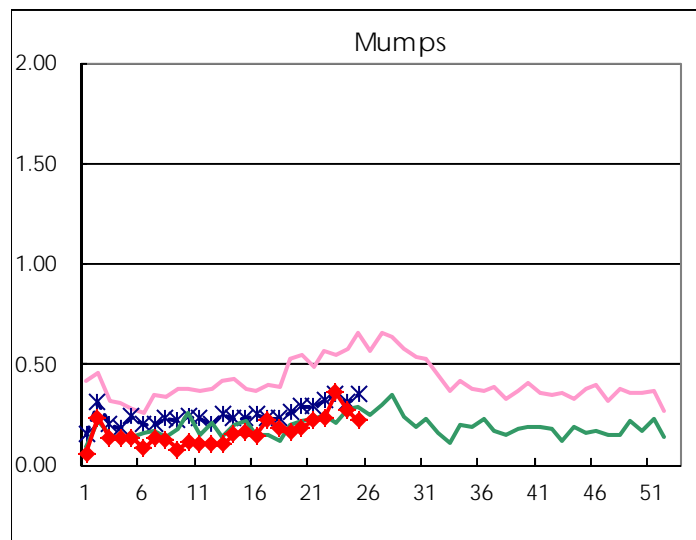
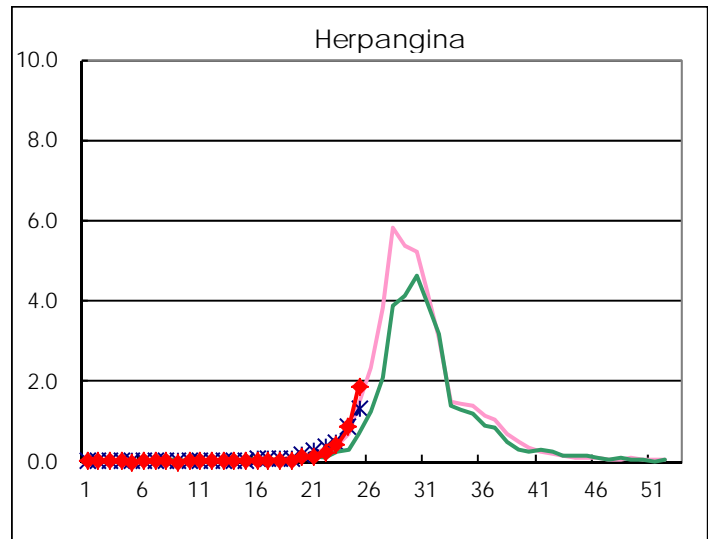
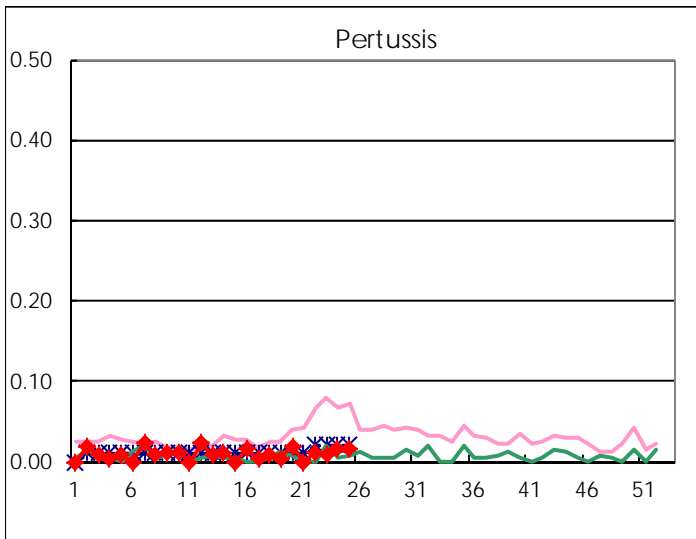
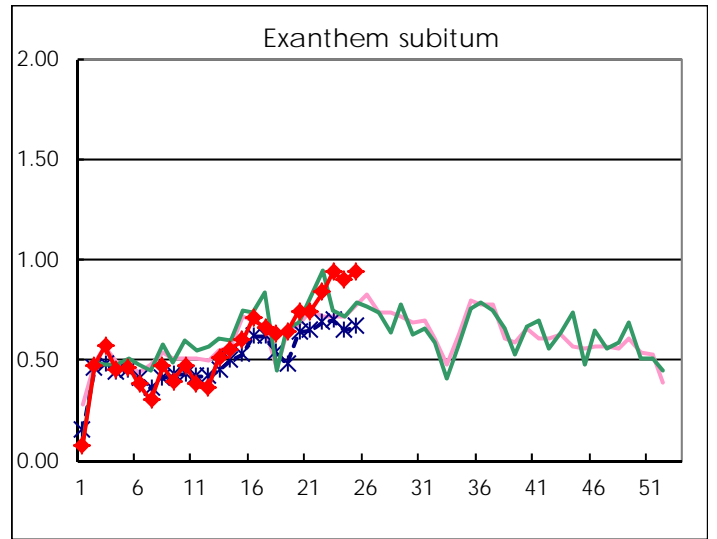
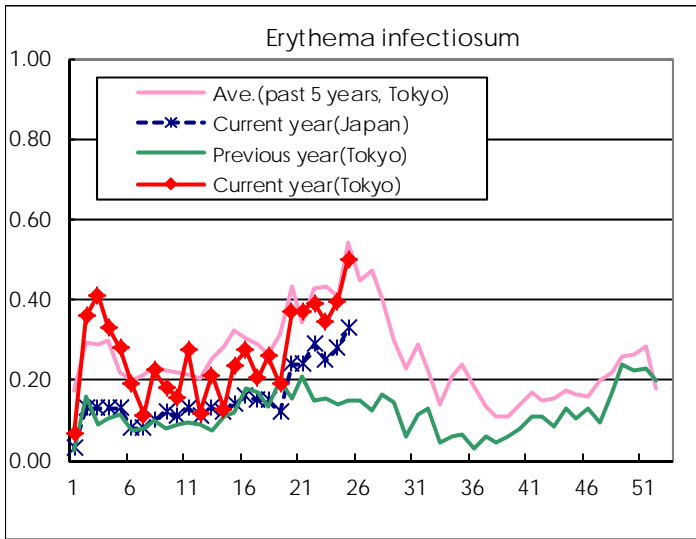
Number of patients with the diseases to be reported  
by the designated clinics and hospitals

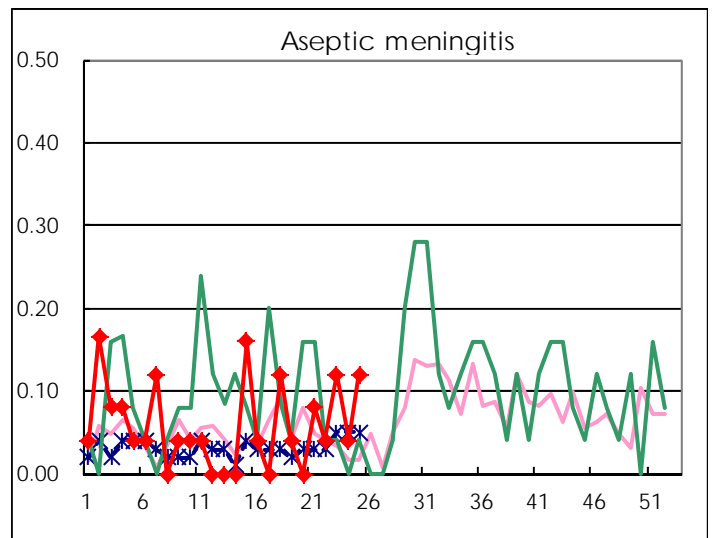
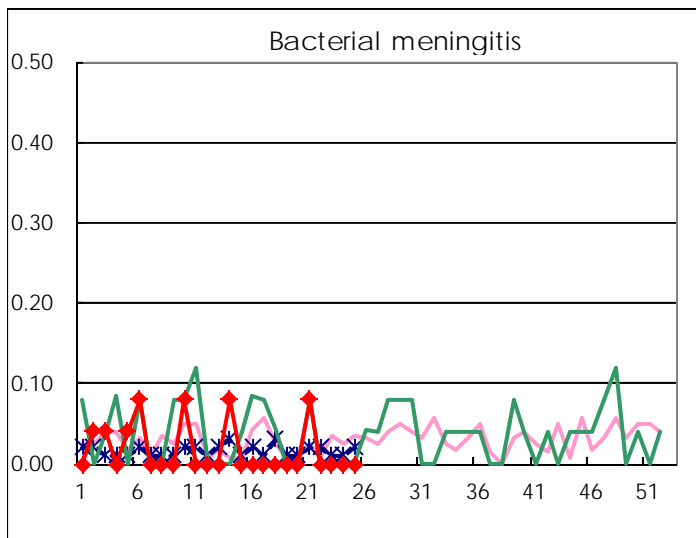
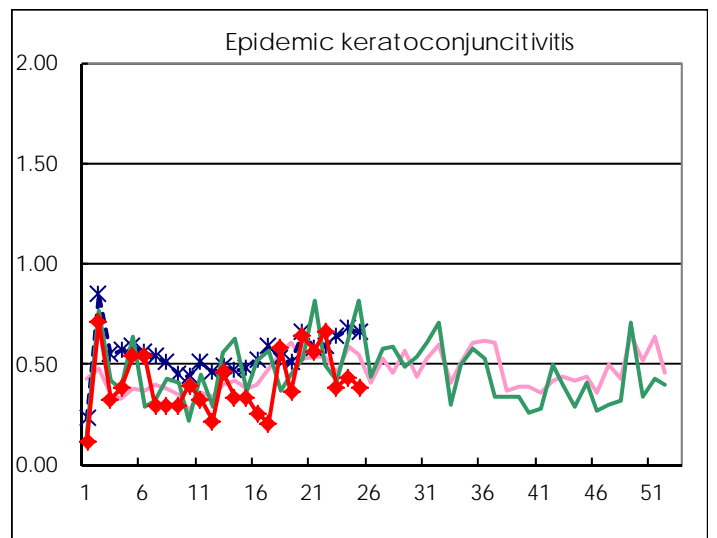
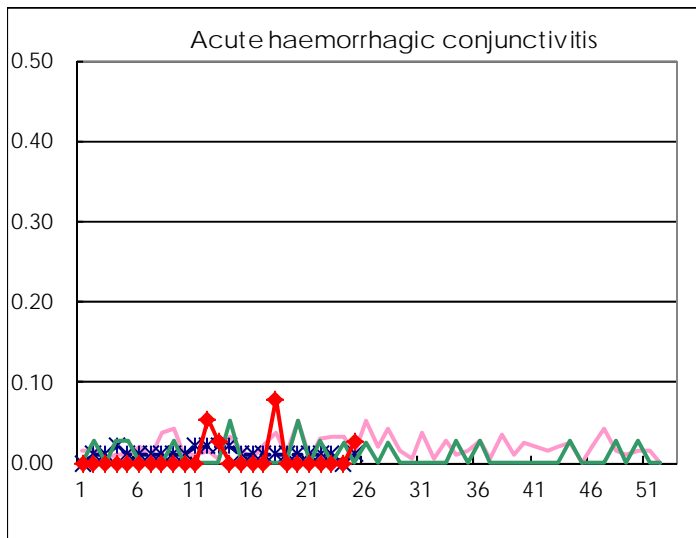
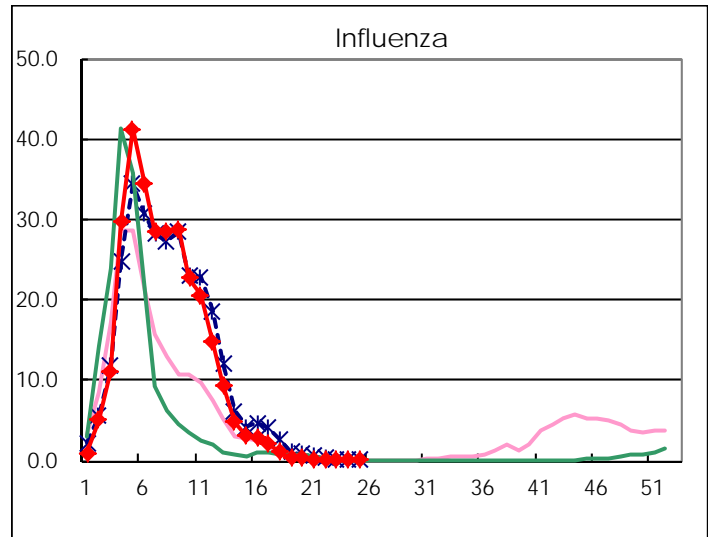
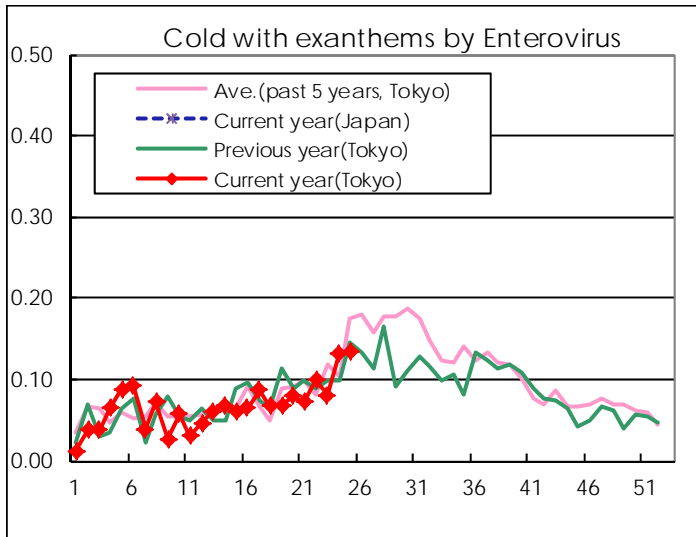
Diseases	Tokyo				
	22nd	23rd	24th	25th	/sentinel
Respiratory syncytial virus infection	21	20	16	34	0.13
Pharyngoconjunctival fever	188	233	237	229	0.88
Group A streptococcal pharyngitis	961	778	806	741	2.84
Infectious gastroenteritis	1,801	1,627	1,680	1,644	6.30
Chickenpox	307	370	279	270	1.03
Hand, foot, and mouth disease	59	69	80	119	0.46
Erythema infectiosum	103	90	105	131	0.50
Exanthem subitum	221	246	237	246	0.94
Pertussis	3	2	4	4	0.02
Herpangina	54	108	228	491	1.88
Mumps	61	94	72	58	0.22
Kawasaki disease	8	3	2	3	0.01
Cold with exanthems by Enterovirus	26	21	35	35	0.13
Influenza	37	8	14	5	0.01
Acute hemorrhagic conjunctivitis				1	0.03
Epidemic keratoconjunctivitis	26	15	17	15	0.38
Bacterial meningitis					
Aseptic meningitis	1	3	1	3	0.12
Mycoplasma pneumonia	2	5	3	2	0.08
Chlamydial pneumonia (excluding psittacosis)			2	1	0.04
Infectious gastroenteritis (only by Rotavirus)	5		2	1	0.04
Influenza-Associated Hospitalizations	1			2	0.08

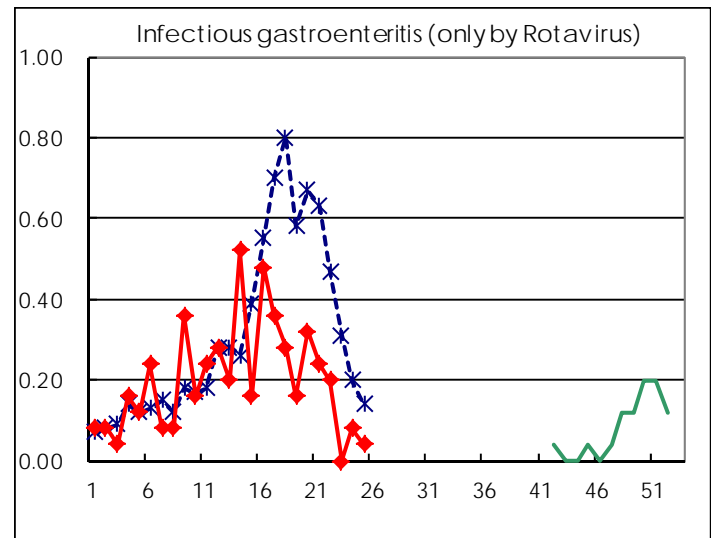
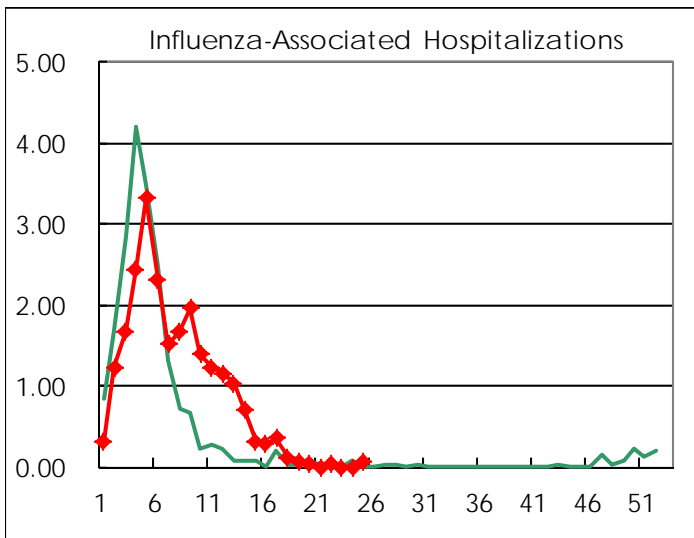
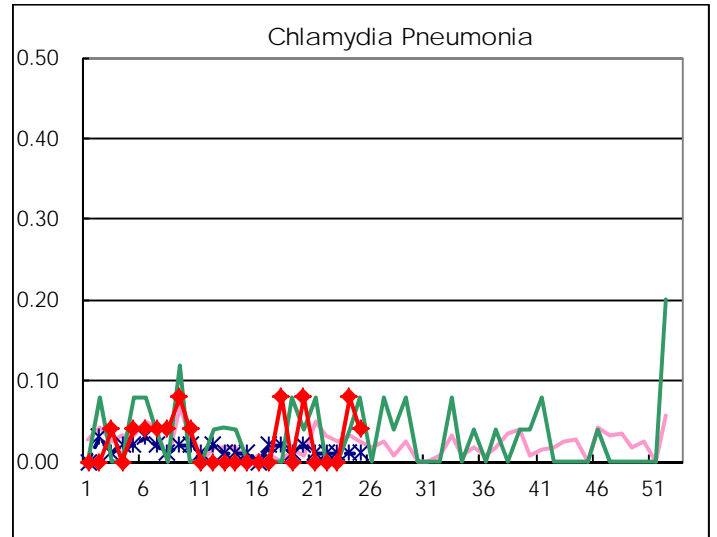
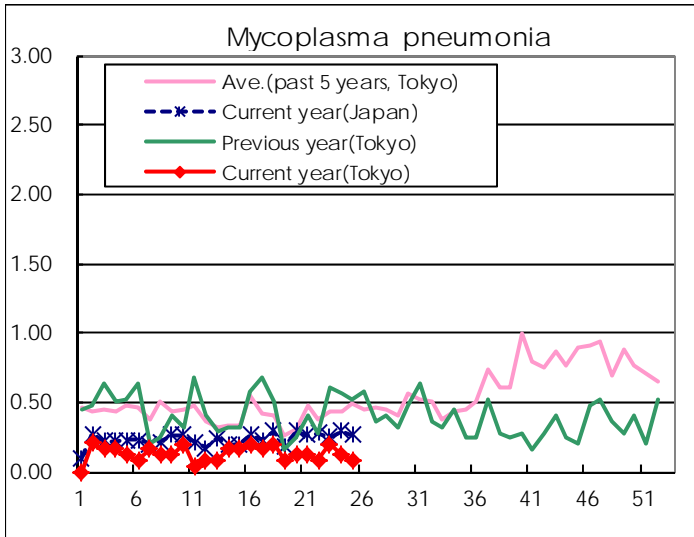
( Blank means 0. )

# Disease Trend Graph (weekly reported cases per sentinel in comparison)









Number of sentinel facilities for weekly reporting		
Types of sentinels	Number of sentinels	Sentinels having reported
Pediatric	264	261
Influenza	419	407
Ophthalmic	39	39
Specially-designated	25	25

Tokyo Metropolitan Government  
**Infectious Disease Surveillance Center**