
INFECTIOUS DISEASES WEEKLY REPORT

TOKYO IDWR

Tokyo Metropolitan Infectious Disease Surveillance Center

10 July 2014 / Number 27

Surveillance System in Tokyo, Japan

The infectious diseases which all physicians must report

All physicians must report to health centers the incidence of the diseases which are shown at page one. Health centers electronically report the individual cases to Tokyo Metropolitan Infectious Disease Surveillance Center.

The infectious diseases required to be reported by the sentinels

The numbers of patients who visit the sentinel clinics or hospitals during a week are reported to health centers in Tokyo. And they electronically report the numbers to Tokyo Metropolitan Infectious Disease Surveillance Center. We have about 500 sentinel clinics and hospitals in Tokyo.

1st Week is early January and 52nd Week is end of December.

Tokyo Metropolitan Institute of Public Health

TEL:81-3-3363-3213 FAX:81-3-5332-7365

e-mail:idsc@tokyo-eiken.go.jp

URL:idsc.tokyo-eiken.go.jp/

Number of patients with the diseases which all physicians must report

Category	Diseases	Tokyo				Japan		
		24th	25th	26th	27th	Cum 2014	27th	Cum 2014
I	Ebola hemorrhagic fever							
	Crimean-Congo hemorrhagic fever							
	Smallpox							
	South American hemorrhagic fever							
	Plague							
	Marburg disease							
	Lassa fever							
II	Acute poliomyelitis							
	Tuberculosis	96	91	85	94	1,976	424	12,667
	Diphtheria							
	Severe Acute Respiratory Syndrome(SARS)							
	Avian influenza H5N1							
※	Avian influenza H7N9							
III	Cholera			2		2		2
	Shigellosis	1	1	1	1	19	2	51
	Enterohemorrhagic Escherichia coli infection	12	17	20	23	129	151	1,024
	Typhoid fever		1			10		21
	Paratyphoid fever					3		8
IV	Hepatitis E					16	1	74
	West Nile fever							
	Hepatitis A	2				26	1	370
	Echinococcosis							6
	Yellow fever							
	Psittacosis					2		6
	Omsk hemorrhagic fever							
	Relapsing fever							1
	Kyasanur forest disease							
	Q fever							1
	Rabies							
	Coccidioidomycosis							1
	Monkeypox							
	Severe Fever with Thrombocytopenia Syndrome						1	27
	Hemorrhagic fever with renal syndrome							
	Western equine encephalitis							
	Tick-borne encephalitis							
	Anthrax							
	Chikungunya fever					2		6
	Scrub typhus(Tsutsugamushi disease)					4	2	100
	Dengue fever	1	3		1	27	4	85
	Eastern equine encephalitis							
	Avian influenza (excluding H5N1 and H7N9)							
	Nipah virus infection							
	Japanese spotted fever						5	65
	Japanese encephalitis							
	Hantavirus pulmonary syndrome							
	Herpes B virus infection							
	Glanders							
	Brucellosis					2	1	6
	Venezuelan equine encephalitis							
	Hendra virus infection							
Epidemic typhus								
Botulism							1	
Malaria				2	13	1	29	
Tularemia								
Lyme disease							2	
Lyssavirus infection(excluding rabies)								
Rift valley fever								
Melioidosis								
Legionellosis	1	5	4	2	53	32	537	
Leptospirosis					1		7	
Rocky mountain spotted fever								

Category	Diseases	Tokyo				Japan		
		24th	25th	26th	27th	Cum 2014	27th	Cum 2014
V	Amebiasis	5	3	3	4	106	16	553
	Viral hepatitis(excluding hepatitis A and E)	1	3	2	4	30	5	138
	Acute encephalitis(excluding JE and WNE)	1	1	1	3	23	4	252
	Cryptosporidiosis			1	63	68	4	73
	Creutzfeldt-Jakob disease	1			1	5	4	83
	Severe invasive streptococcal infections(TSLS)		3	1	1	29	3	138
	Acquired immunodeficiency syndrome (AIDS)	14	12	15	17	258	19	763
	Giardiasis			1		8		33
	Invasive <i>Haemophilus influenzae</i> disease				1	15		104
	Invasive meningococcal disease		1			4	1	20
	Invasive pneumococcal disease	4	8	4	2	137	13	1,104
	Congenital rubella syndrome					3		8
	Syphilis	9	13	17	15	250	28	779
	Tetanus		1			6	3	58
	Vancomycin-resistant <i>S. aureus</i> infection							
	Vancomycin-resistant Enterococcus infection					3	2	29
	Rubella		2	3	3	66	3	233
Measles	4		1	1	82	14	410	

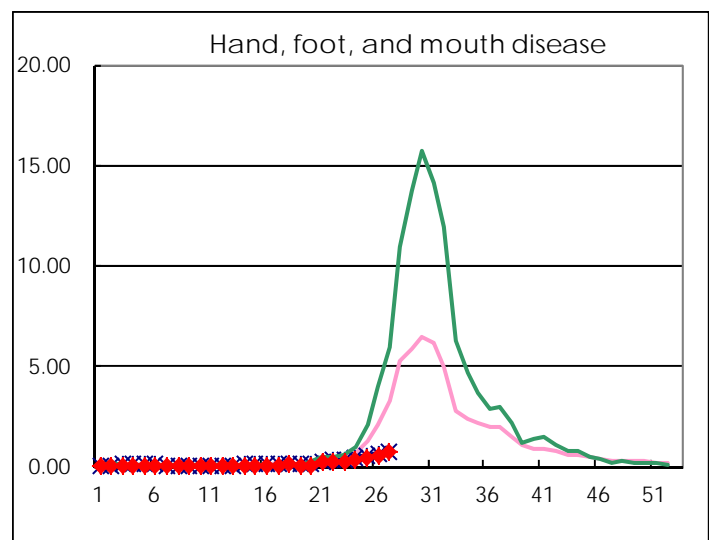
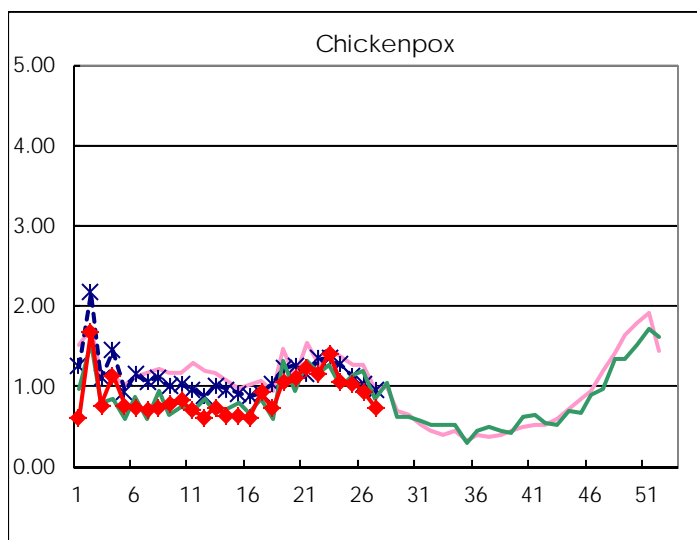
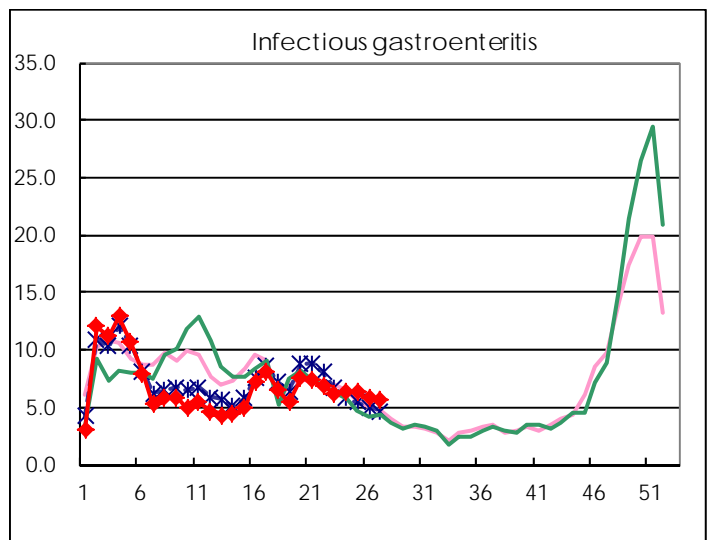
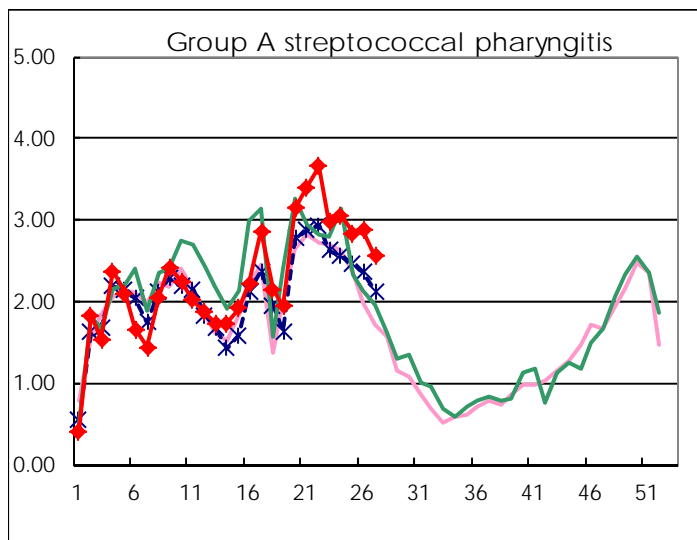
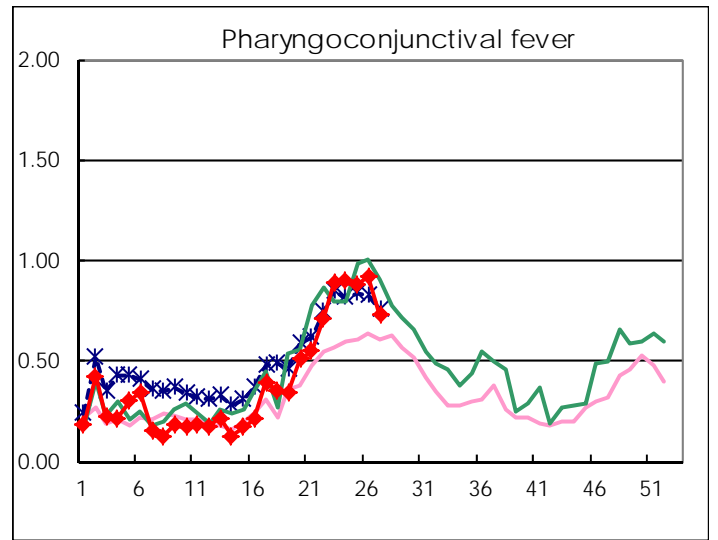
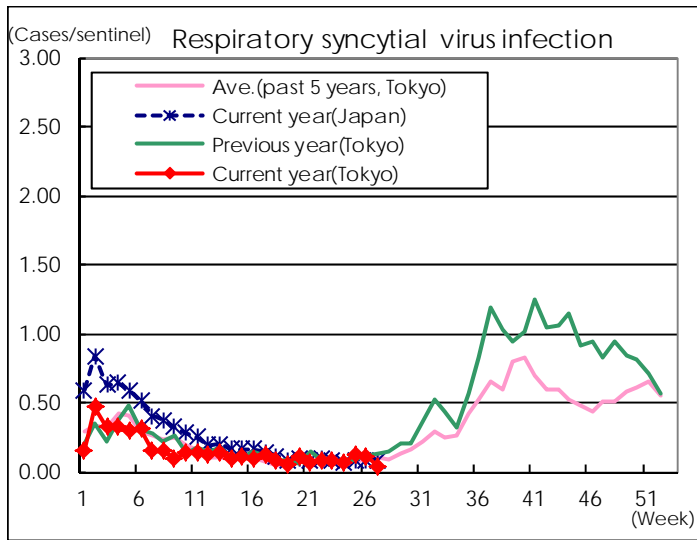
※ Designated infectious disease

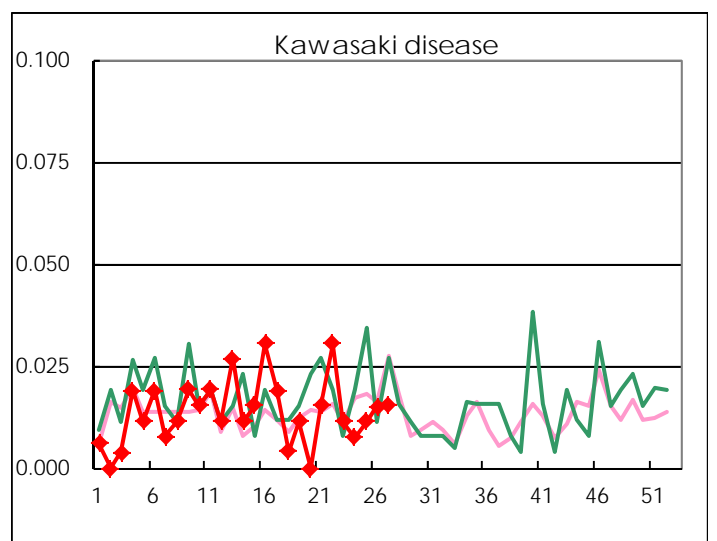
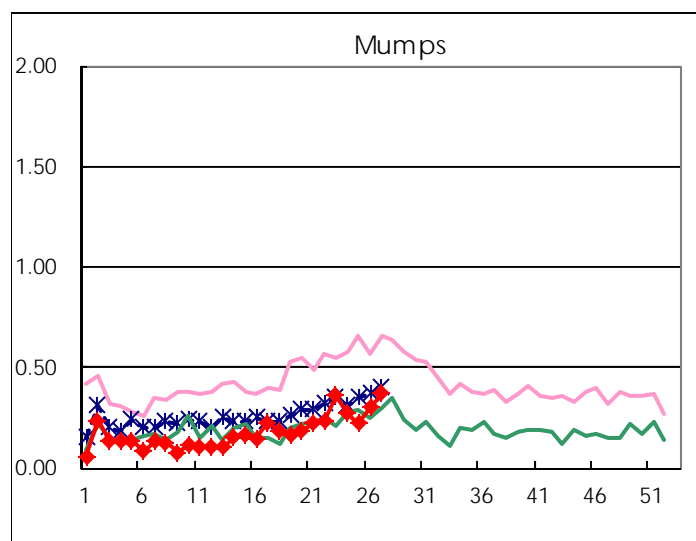
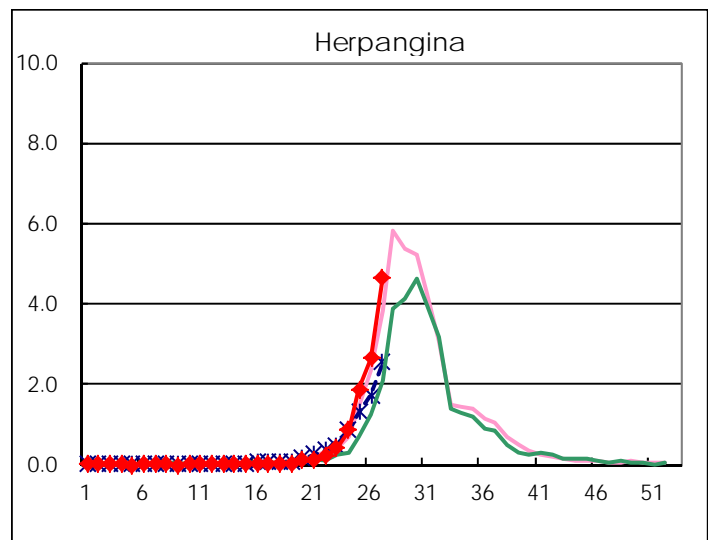
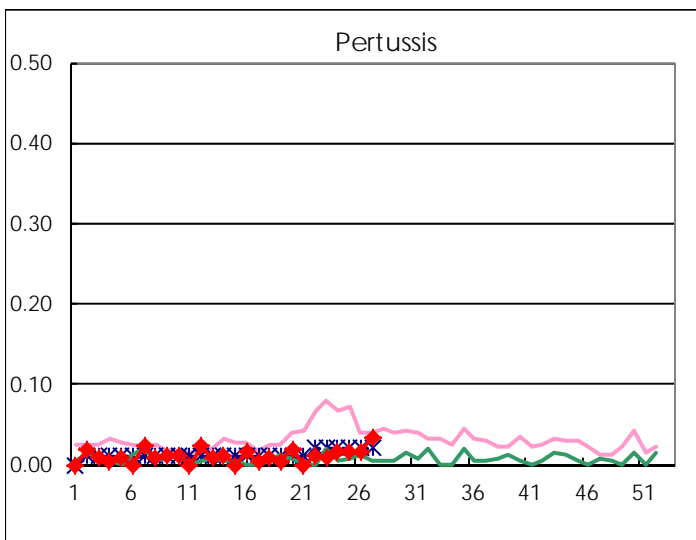
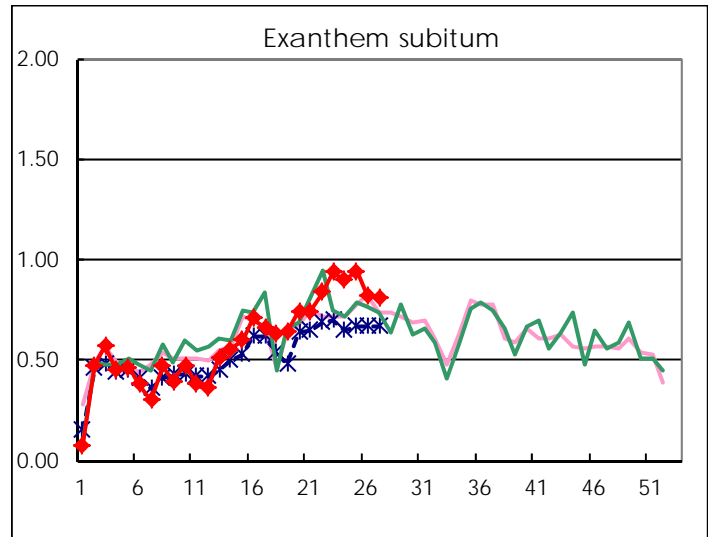
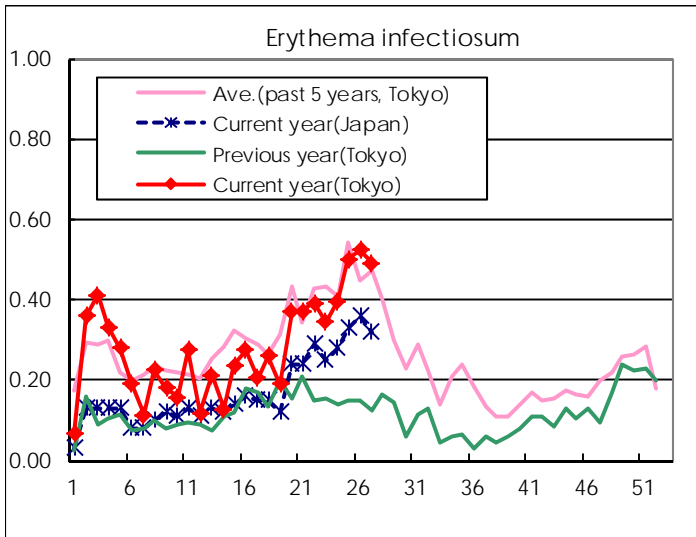
Number of patients with the diseases to be reported
by the designated clinics and hospitals

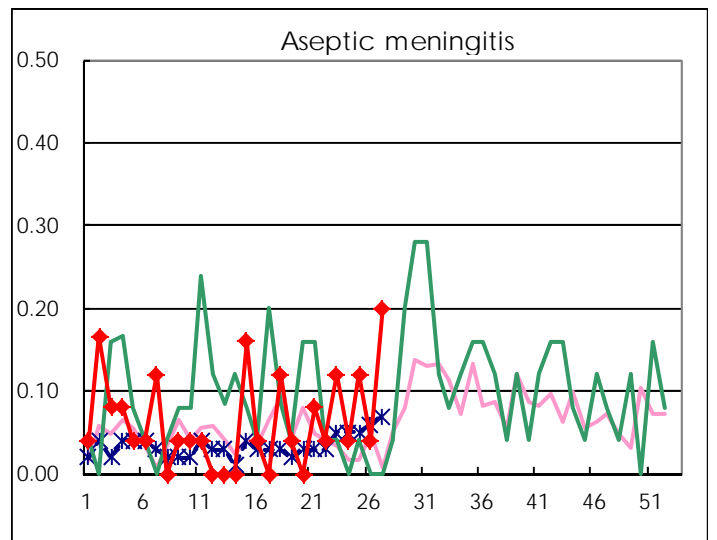
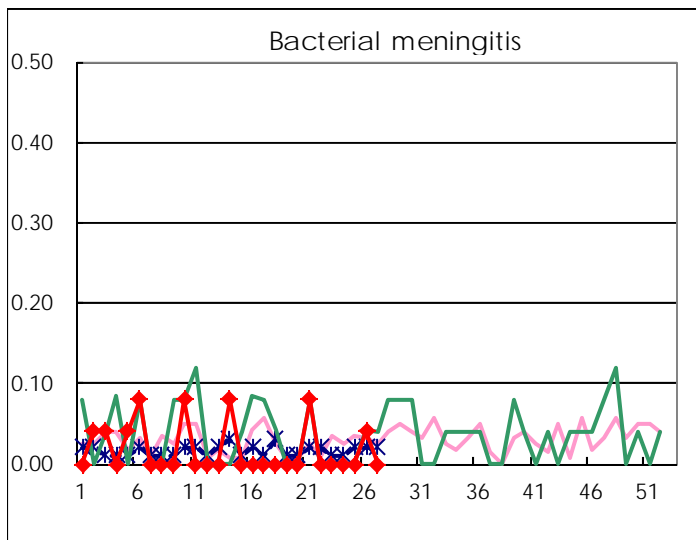
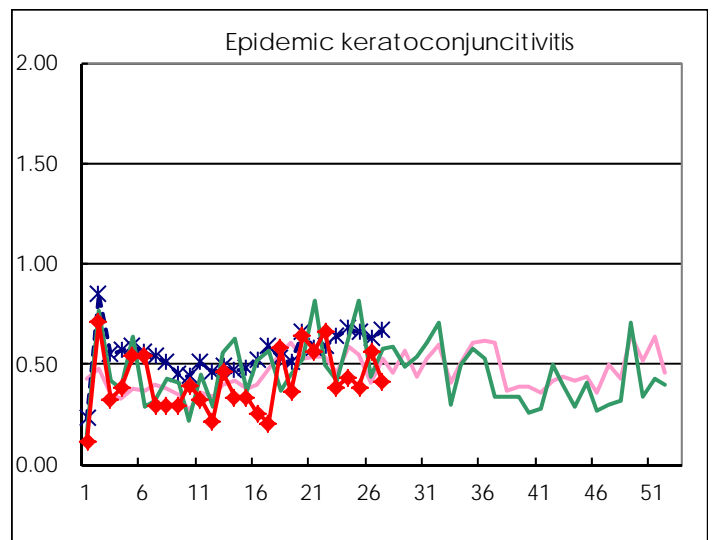
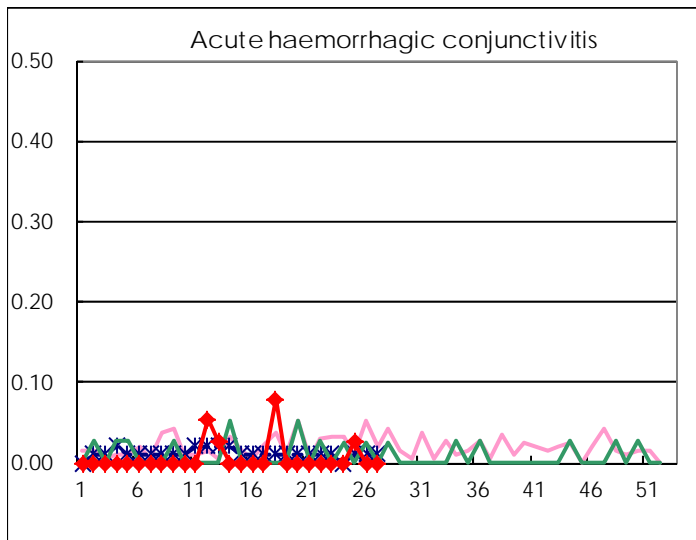
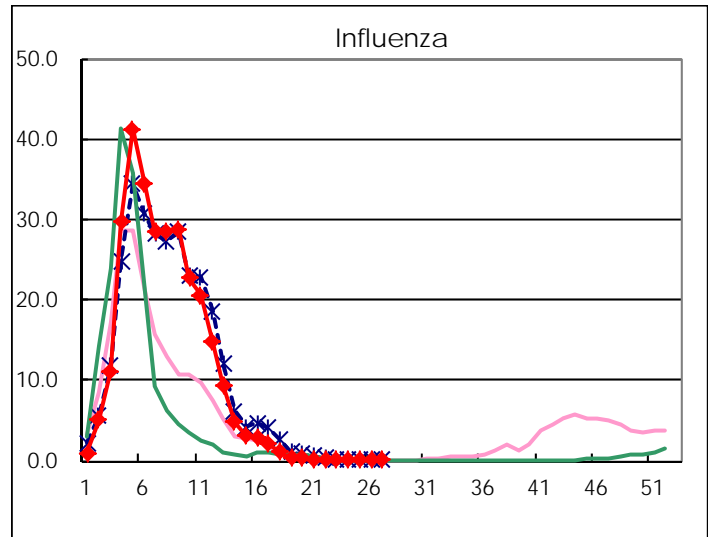
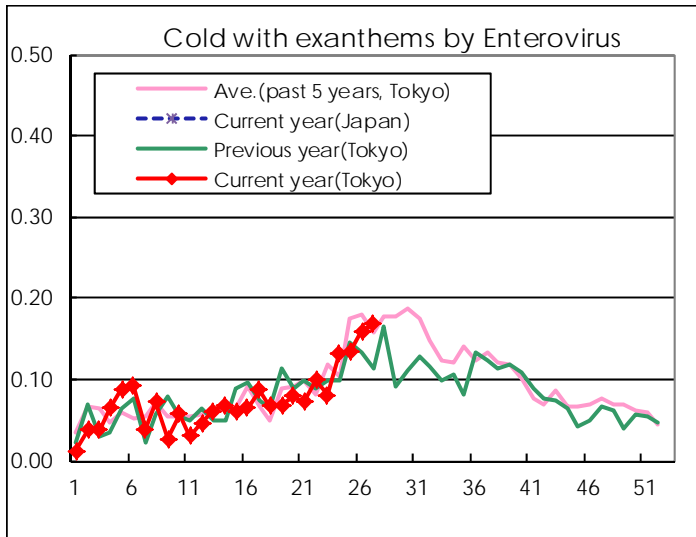
Diseases	Tokyo				
	24th	25th	26th	27th	/sentinel
Respiratory syncytial virus infection	16	34	30	9	0.03
Pharyngoconjunctival fever	237	229	243	191	0.73
Group A streptococcal pharyngitis	806	741	760	669	2.55
Infectious gastroenteritis	1,680	1,644	1,524	1,474	5.63
Chickenpox	279	270	247	193	0.74
Hand, foot, and mouth disease	80	119	154	188	0.72
Erythema infectiosum	105	131	138	129	0.49
Exanthem subitum	237	246	217	212	0.81
Pertussis	4	4	4	9	0.03
Herpangina	228	491	702	1,219	4.65
Mumps	72	58	79	97	0.37
Kawasaki disease	2	3	4	4	0.02
Cold with exanthems by Enterovirus	35	35	42	44	0.17
Influenza	14	5	7	4	0.01
Acute hemorrhagic conjunctivitis		1			
Epidemic keratoconjunctivitis	17	15	22	16	0.41
Bacterial meningitis			1		
Aseptic meningitis	1	3	1	5	0.20
Mycoplasma pneumonia	3	2	2	4	0.16
Chlamydial pneumonia (excluding psittacosis)	2	1		1	0.04
Infectious gastroenteritis (only by Rotavirus)	2	1	2		
Influenza-Associated Hospitalizations		2	2	1	0.04

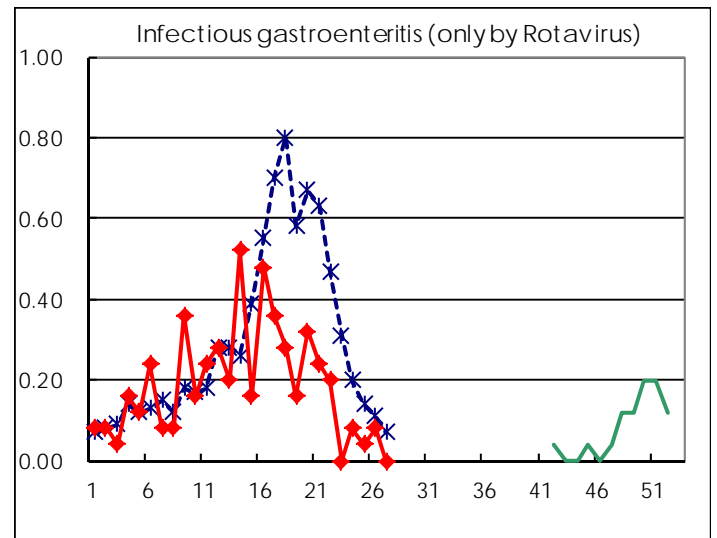
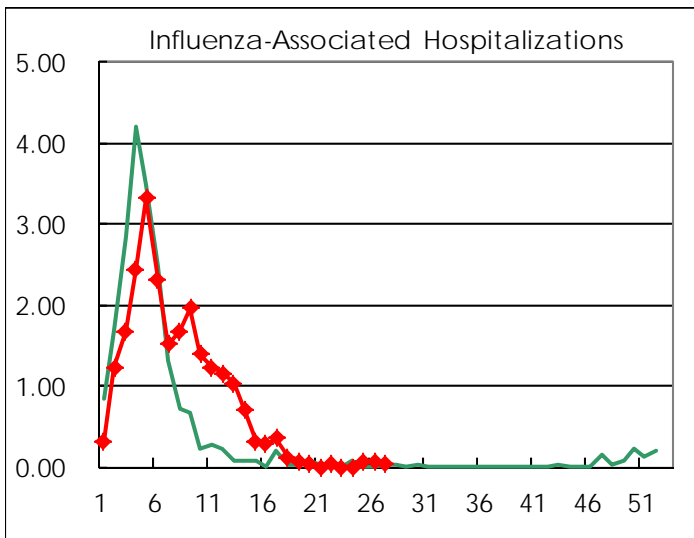
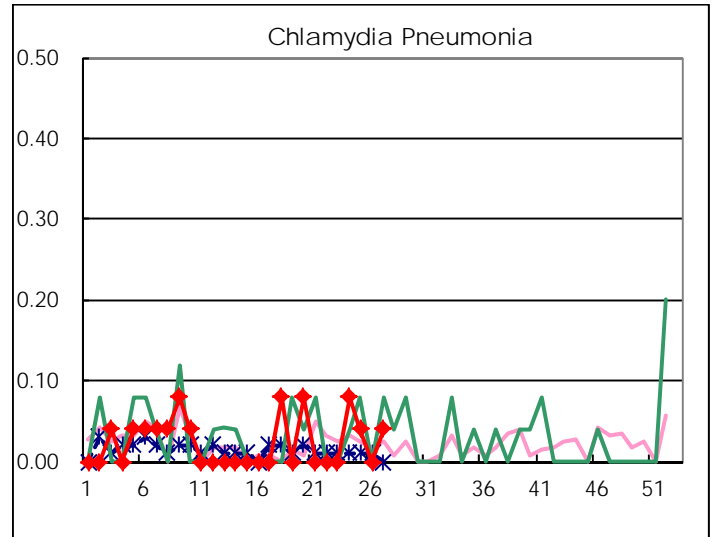
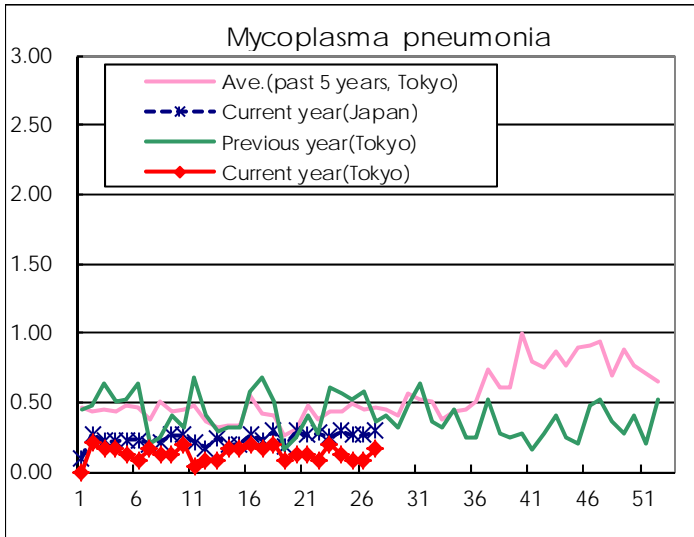
(Blank means 0.)

Disease Trend Graph (weekly reported cases per sentinel in comparison)









Number of sentinel facilities for weekly reporting		
Types of sentinels	Number of sentinels	Sentinels having reported
Pediatric	264	262
Influenza	419	408
Ophthalmic	39	39
Specially-designated	25	25

Tokyo Metropolitan Government
Infectious Disease Surveillance Center