

---

INFECTIOUS DISEASES WEEKLY REPORT

# TOKYO iDWR

Tokyo Metropolitan Infectious Disease Surveillance Center

17 July 2014 / Number 28

## Surveillance System in Tokyo, Japan

The infectious diseases which all physicians must report

All physicians must report to health centers the incidence of the diseases which are shown at page one. Health centers electronically report the individual cases to Tokyo Metropolitan Infectious Disease Surveillance Center.

The infectious diseases required to be reported by the sentinels

The numbers of patients who visit the sentinel clinics or hospitals during a week are reported to health centers in Tokyo. And they electronically report the numbers to Tokyo Metropolitan Infectious Disease Surveillance Center. We have about 500 sentinel clinics and hospitals in Tokyo.

1st Week is early January and 52nd Week is end of December.

Tokyo Metropolitan Institute of Public Health

TEL:81-3-3363-3213 FAX:81-3-5332-7365

e-mail:[idsc@tokyo-eiken.go.jp](mailto:idsc@tokyo-eiken.go.jp)

URL:[idsc.tokyo-eiken.go.jp/](http://idsc.tokyo-eiken.go.jp/)

---

## Number of patients with the diseases which all physicians must report

Category	Diseases	Tokyo				Japan		
		25th	26th	27th	28th	Cum 2014	28th	Cum 2014
I	Ebola hemorrhagic fever							
	Crimean-Congo hemorrhagic fever							
	Smallpox							
	South American hemorrhagic fever							
	Plague							
	Marburg disease							
	Lassa fever							
II	Acute poliomyelitis							
	Tuberculosis	91	86	94	91	2,068	413	13,267
	Diphtheria							
	Severe Acute Respiratory Syndrome(SARS)							
	Avian influenza H5N1							
※	Avian influenza H7N9							
III	Cholera		2			2		2
	Shigellosis	1	1	1	3	22	3	54
	Enterohemorrhagic Escherichia coli infection	17	20	23	24	153	154	1,198
	Typhoid fever	1				10	1	22
	Paratyphoid fever					3		8
IV	Hepatitis E					16	1	76
	West Nile fever							
	Hepatitis A					26	1	372
	Echinococcosis							6
	Yellow fever							
	Psittacosis					2		6
	Omsk hemorrhagic fever							
	Relapsing fever							1
	Kyasanur forest disease							
	Q fever							1
	Rabies							
	Coccidioidomycosis							1
	Monkeypox							
	Severe Fever with Thrombocytopenia Syndrome						5	32
	Hemorrhagic fever with renal syndrome							
	Western equine encephalitis							
	Tick-borne encephalitis							
	Anthrax							
	Chikungunya fever					2		6
	Scrub typhus(Tsutsugamushi disease)				1	5	5	105
	Dengue fever	3		1	1	28		86
	Eastern equine encephalitis							
	Avian influenza (excluding H5N1 and H7N9)							
	Nipah virus infection							
	Japanese spotted fever						3	68
	Japanese encephalitis							
	Hantavirus pulmonary syndrome							
	Herpes B virus infection							
	Glanders							
	Brucellosis					2		6
	Venezuelan equine encephalitis							
	Hendra virus infection							
	Epidemic typhus							
Botulism							1	
Malaria			2	1	14	2	31	
Tularemia								
Lyme disease							2	
Lyssavirus infection(excluding rabies)								
Rift valley fever								
Melioidosis								
Legionellosis	5	4	2	1	54	24	570	
Leptospirosis					1		7	
Rocky mountain spotted fever								

Category	Diseases	Tokyo				Japan		
		25th	26th	27th	28th	Cum 2014	28th	Cum 2014
V	Amebiasis	3	3	4	4	110	22	587
	Viral hepatitis(excluding hepatitis A and E)	3	2	4		30	1	139
	Acute encephalitis(excluding JE and WNE)	1	1	3	1	24	3	263
	Cryptosporidiosis		1	63	5	73		79
	Creutzfeldt-Jakob disease			1		5	2	88
	Severe invasive streptococcal infections(TSLS)	3	1	1		29	2	141
	Acquired immunodeficiency syndrome (AIDS)	12	15	18	16	275	21	799
	Giardiasis		1			8	2	35
	Invasive <i>Haemophilus influenzae</i> disease			1	1	16	4	113
	Invasive meningococcal disease	1				4	1	21
	Invasive pneumococcal disease	8	4	2	3	140	13	1,123
	Congenital rubella syndrome					3		8
	Syphilis	13	17	15	13	263	23	813
	Tetanus	1				6	5	64
	Vancomycin-resistant <i>S. aureus</i> infection							
	Vancomycin-resistant Enterococcus infection					3	1	31
	Rubella	2	3	3	1	67	6	241
Measles		1	1		82	6	412	

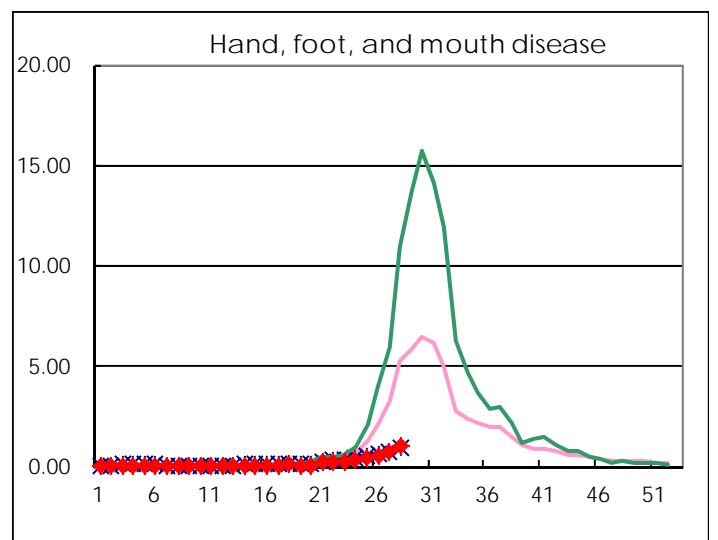
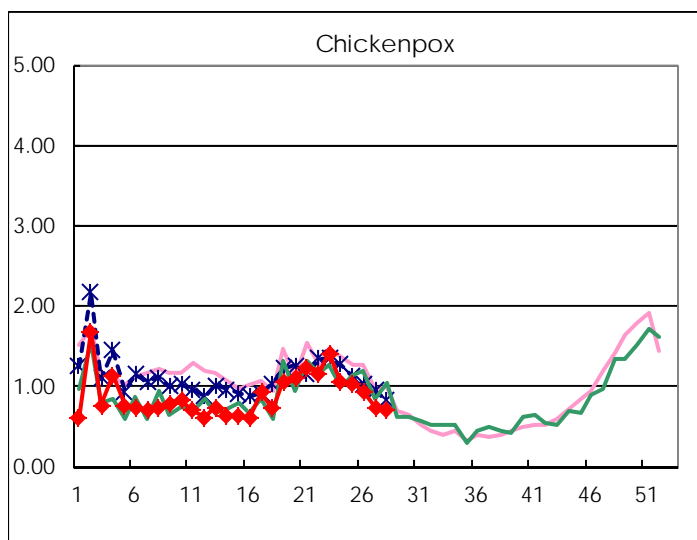
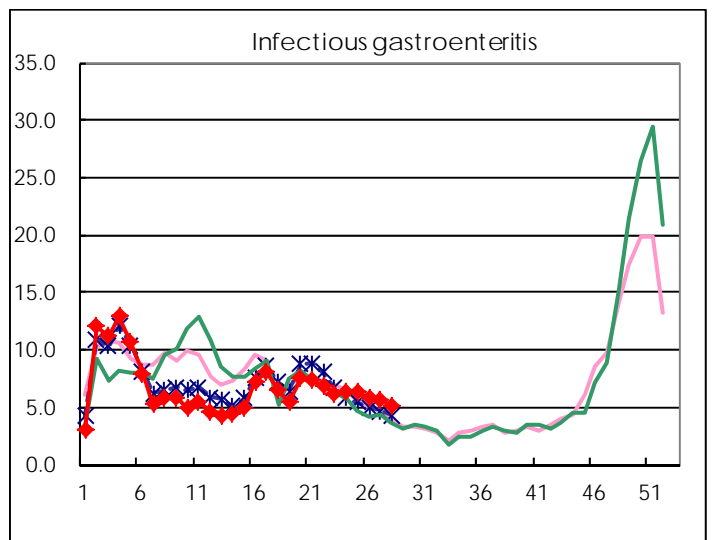
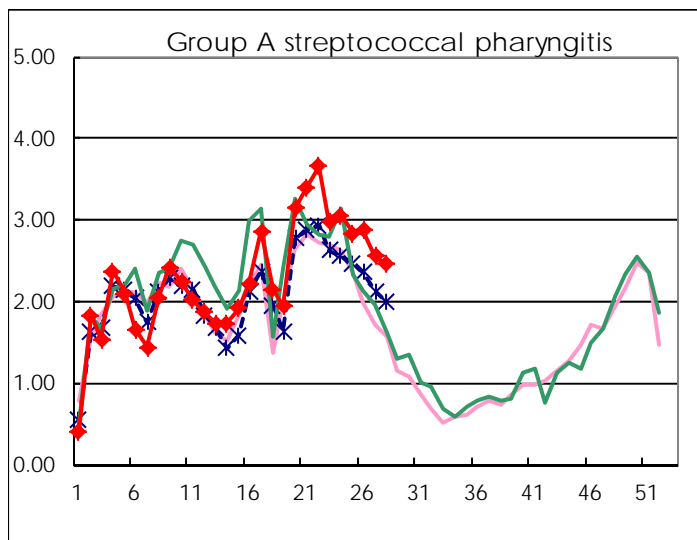
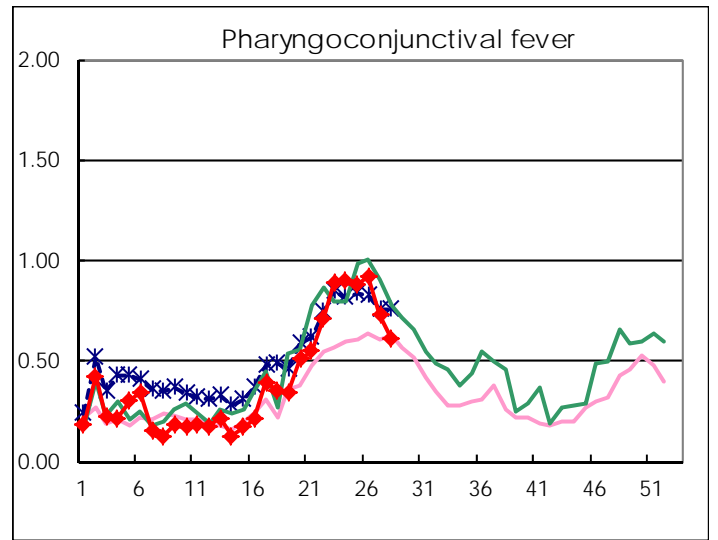
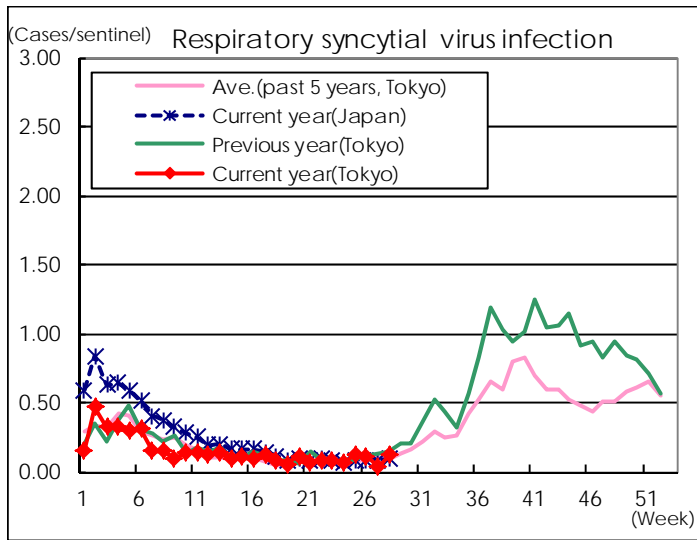
※ Designated infectious disease

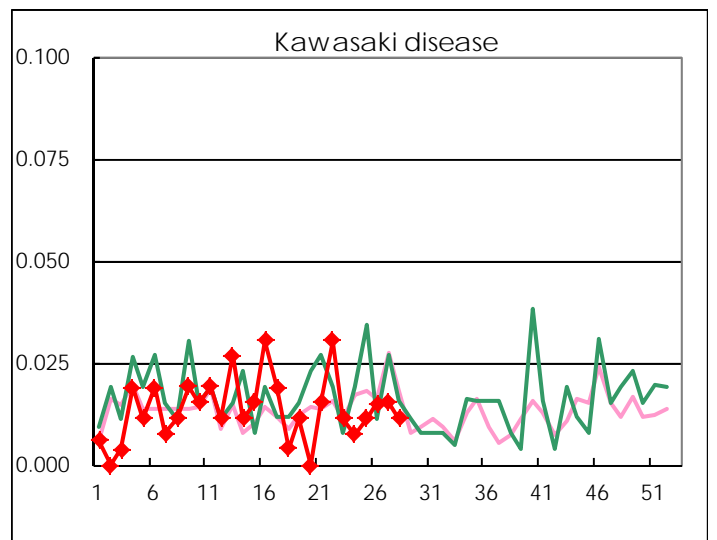
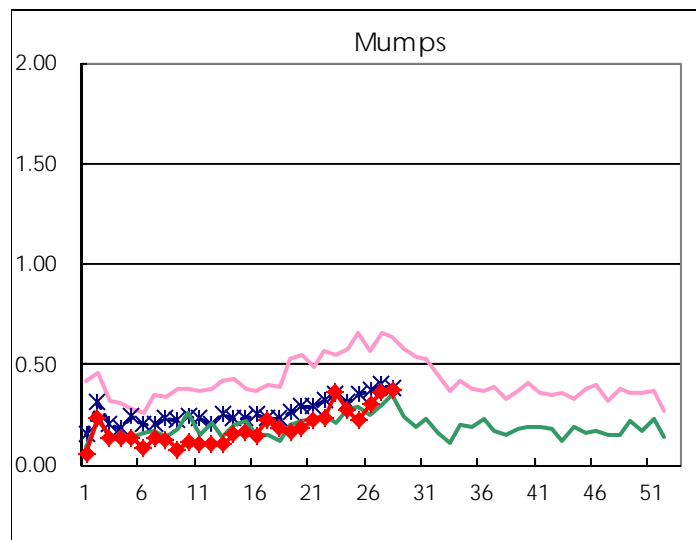
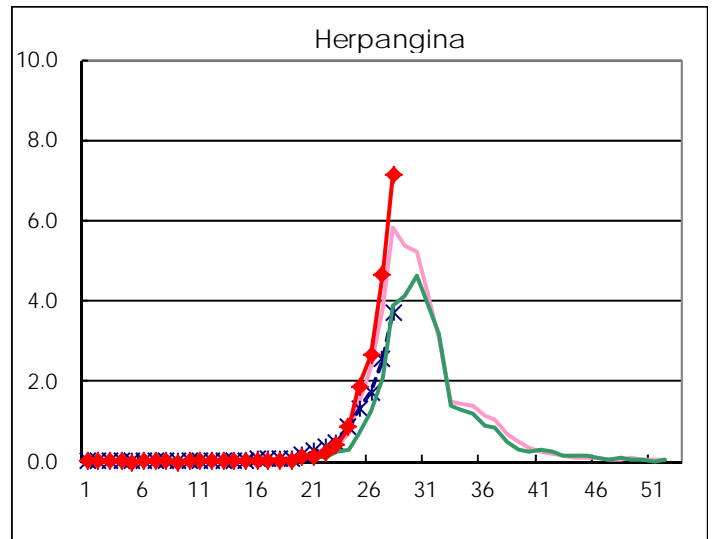
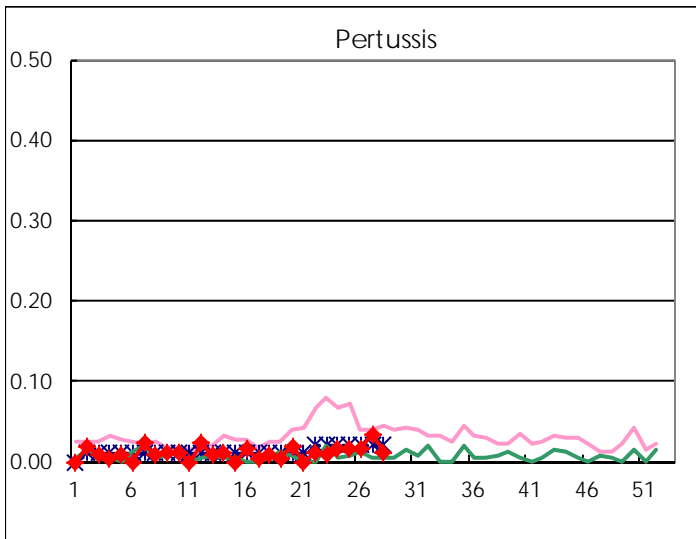
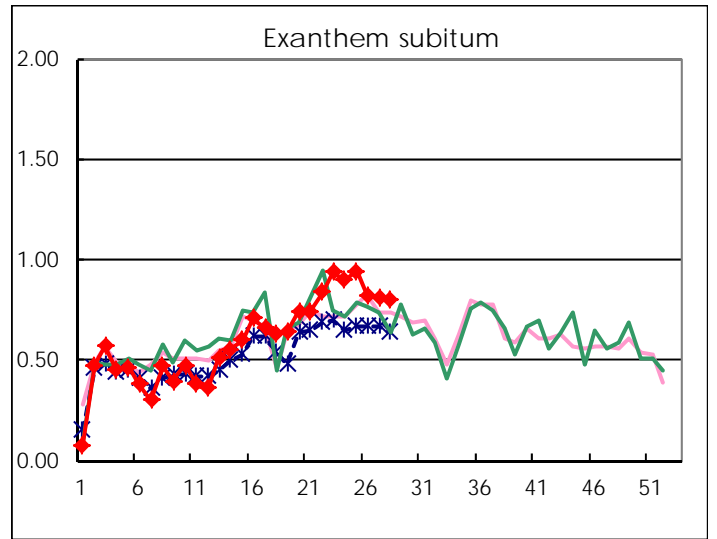
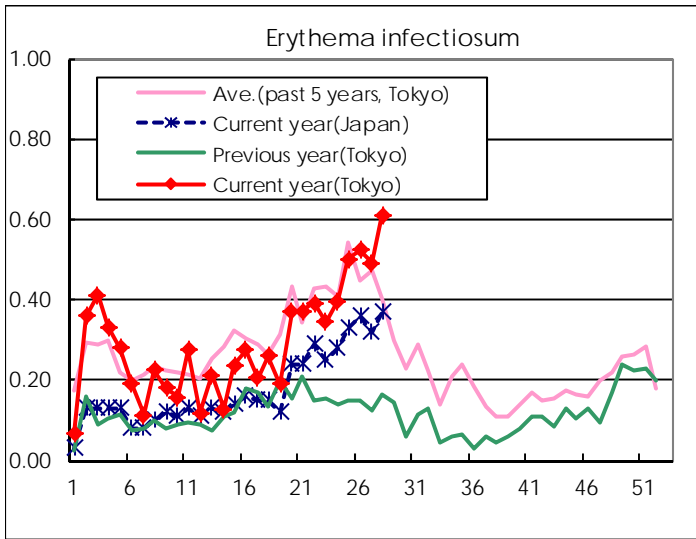
Number of patients with the diseases to be reported  
by the designated clinics and hospitals

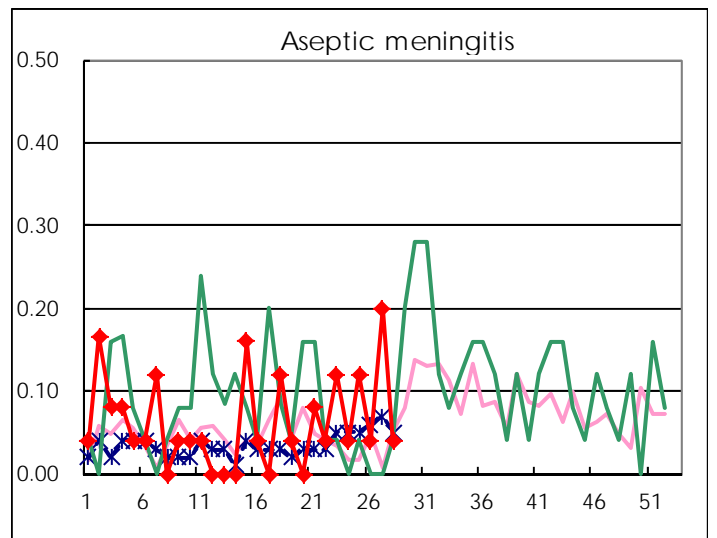
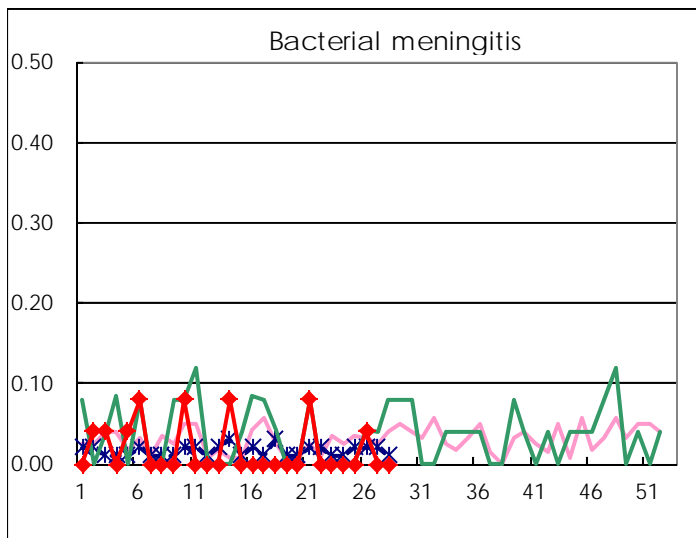
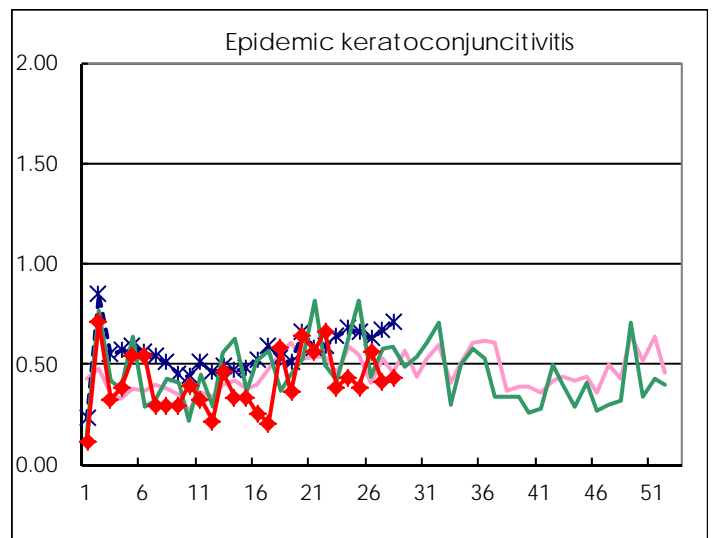
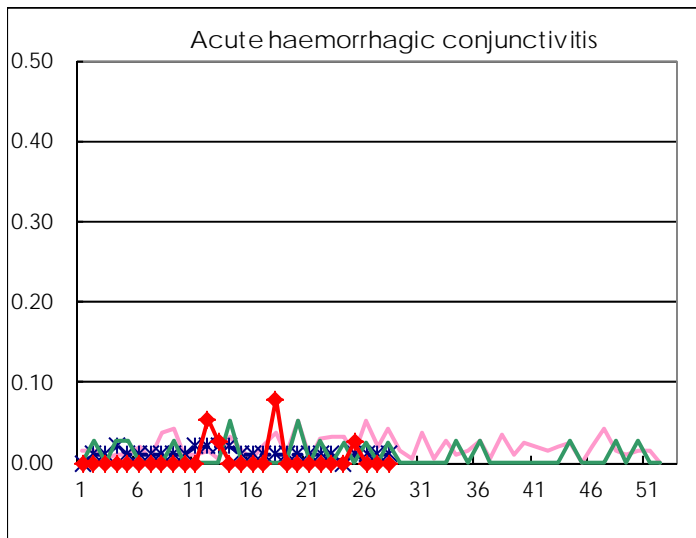
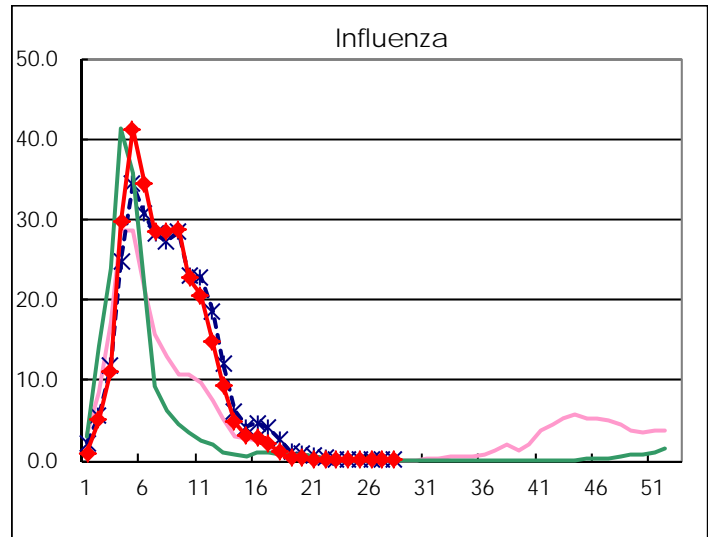
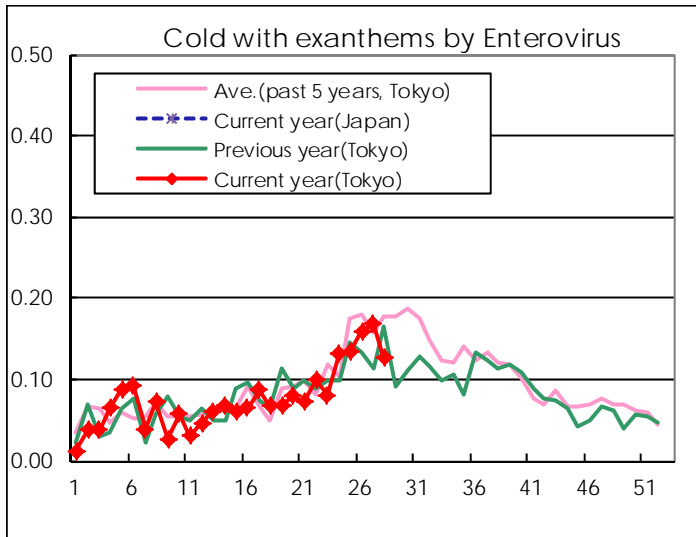
Diseases	Tokyo				
	25th	26th	27th	28th	/sentinel
Respiratory syncytial virus infection	34	30	9	32	0.12
Pharyngoconjunctival fever	229	243	191	160	0.61
Group A streptococcal pharyngitis	741	760	669	645	2.46
Infectious gastroenteritis	1,644	1,524	1,474	1,348	5.15
Chickenpox	270	247	193	187	0.71
Hand, foot, and mouth disease	119	154	188	285	1.09
Erythema infectiosum	131	138	129	160	0.61
Exanthem subitum	246	217	212	209	0.80
Pertussis	4	4	9	3	0.01
Herpangina	491	702	1,219	1,867	7.13
Mumps	58	79	96	99	0.38
Kawasaki disease	3	4	4	3	0.01
Cold with exanthems by Enterovirus	35	42	44	33	0.13
Influenza	5	7	4	1	0.00
Acute hemorrhagic conjunctivitis	1				
Epidemic keratoconjunctivitis	15	22	16	17	0.44
Bacterial meningitis		1			
Aseptic meningitis	3	1	5	1	0.04
Mycoplasma pneumonia	2	2	4	2	0.08
Chlamydial pneumonia (excluding psittacosis)	1		1		
Infectious gastroenteritis (only by Rotavirus)	1	2			
Influenza-Associated Hospitalizations	2	2	1	1	0.04

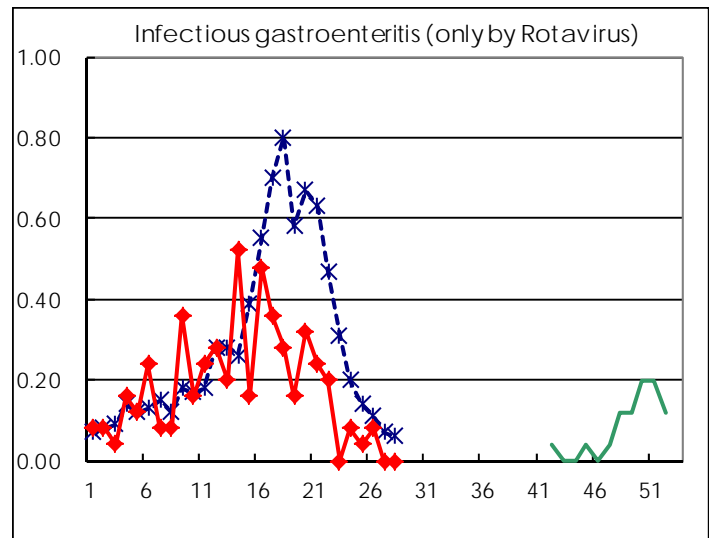
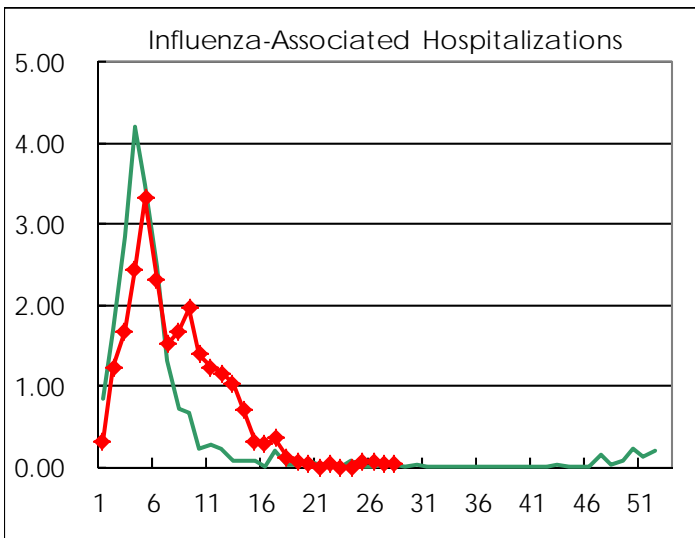
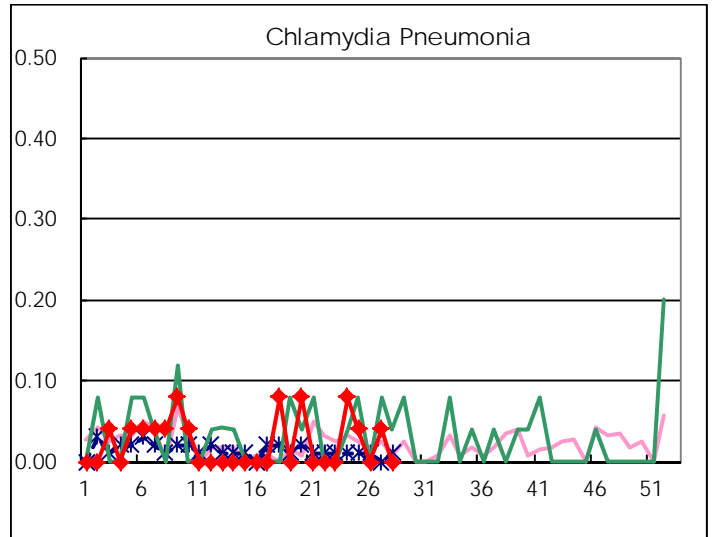
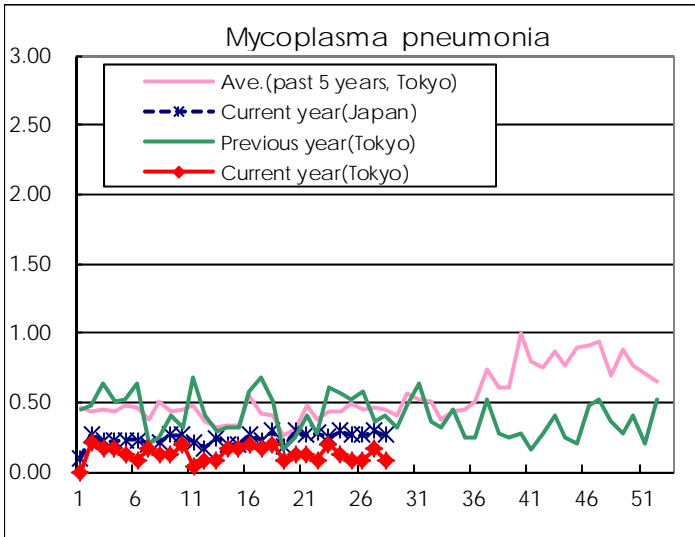
( Blank means 0. )

# Disease Trend Graph (weekly reported cases per sentinel in comparison)









Number of sentinel facilities for weekly reporting		
Types of sentinels	Number of sentinels	Sentinels having reported
Pediatric	264	262
Influenza	419	413
Ophthalmic	39	39
Specially-designated	25	25

Tokyo Metropolitan Government  
**Infectious Disease Surveillance Center**